

# District Pre-Investment Study - 2012

---

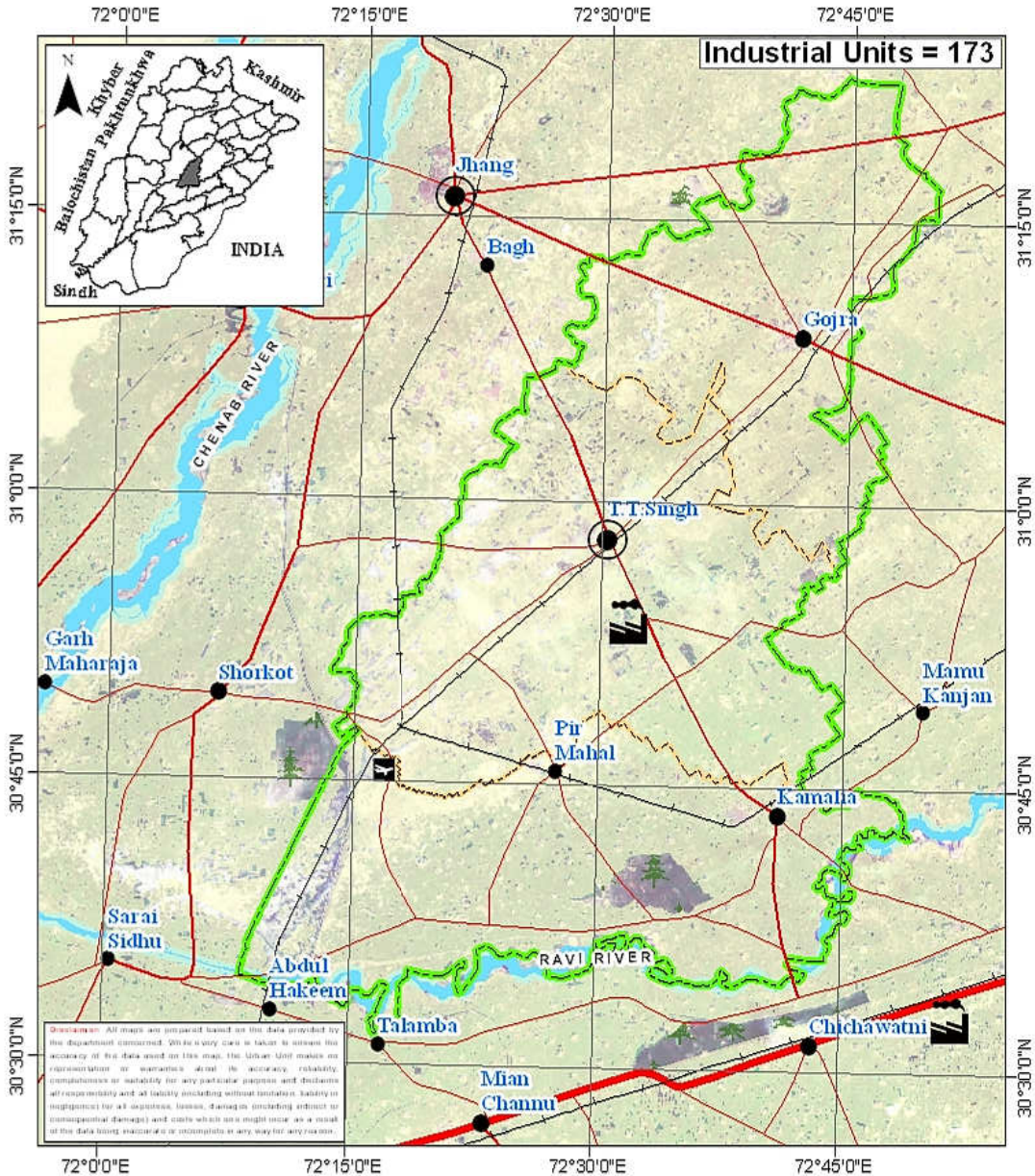
Toba Tek Singh



---

Directorate of Industries, Punjab  
Poonch House, Multan Road, Lahore.

# District Toba Tek Singh



Map No.: TTS-01    Date: 21-01-2013

Scale: 1:1,000,000

0    12.5    25

Kilometers

## Legend

### Administrative:

Provincial Boundary

District Boundary

Tehsil Boundary

Divisional Headquarter

District Headquarter

Tehsil Headquarter

### Transportation:

Motorway

Provincial Highway

Primary Road

Intercity Road

Pakistan Railway

Airport

### Landuse:

River

Agricultural Land

Forest

Industrial Estate

## Director's Message

After spending past two years in Directorate of Industries, Punjab, I feel very privileged to be writing this message as Director Industries, Punjab.



This is the time we publish the 7<sup>th</sup> edition of the District Pre-Investment Studies of 36 Districts of Punjab, which has now become synonymous with our commitment to helping Industrialists, new entrepreneurs as well as Researchers. As Director Industries Punjab, I have seen much change, like:

- Relocation plan for the industrial units located within residential areas to industrial estates / positive areas declared by the District Governments.
- Adaptation of Boilers & Pressure Vessels Ordinance 2002.
- Conduct of Census of Manufacturing Industries.
- A scheme "Improvement and Up-gradation of Boilers Inspection Wing" has been approved by the Planning & Development Department, Government of the Punjab with the cost of Rs.10 Million.
- A Scheme "Sports Goods and Material Testing Laboratory" is under process in Planning & Development Department, Government of the Punjab. The estimated cost of the scheme is Rs.450 Million.
- The proposal for Capacity Building of Directorate of Industries Punjab is under process in Industries, Commerce & Investment Department, Government of the Punjab with the estimated cost of Rs.109.75 Million.
- We launch our website [www.doi.pitb.gov.pk](http://www.doi.pitb.gov.pk).

Looking ahead, we are focused on accelerating the execution of growth and promote industrial investment in the province. I am incredibly excited about this and truly believe the best of time for industrial investment is yet to come, Insha Allah.

**(Muhammad Siddique Sheikh)**  
Director Industries, Punjab

## Preface

Pre-investment studies for the districts in the Punjab were first published by the Directorate of Industries and Mineral Development, Punjab in the year 1979, with the prime objective of providing data which might interest private entrepreneurs and the framers of the Provincial and National Strategies in the industrial sector.

The second, third, fourth, fifth and sixth series of Pre-investment Studies for all districts of Punjab were published in 1983, 1992, 2002, 2006 and 2009 respectively. The present edition is seventh in the series.

This study basically updates the information contained in fifth series of district pre-investment studies. Efforts have been made to provide latest information collected through published sources, offices of the respective Government Departments/Agencies and District Offices of Industries Department. Quality addition of Industrial Policy Framework, recently promulgated Special Economic Zone Act 2012, Strategic Trade Policy Framework (2012-15) and Digital Maps by Urban Unit has improved these studies significantly.

The information has been updated in respect of population, manpower, production of agriculture crops, fruits, vegetables, livestock, forest resources, ores/minerals, infrastructural facilities such as technical/vocational training facilities, communication net-work, sub-soil water quality/effluent disposal

facilities, power/gas supply, tele-communication facilities, industrial estates, dry ports, industrial financing facilities, loaning scheme of PSIC, industrial policy, investment policy, fiscal incentives, Special Economic Zone Act 2012 and Strategic Trade Policy Framework (2012-15) etc. New policy measures regarding declaration of negative and specified positive areas have also been incorporated.

The study also includes information regarding existing industrial pattern, industry wise installed capacities and details regarding existing major industrial units in each district.

Effort has been made to identify various industries considering the availability of raw materials, skilled labour, linkage between industrial units and local/national/international demand. The suggested industries are, however, merely of indicative nature and it is advisable that prospective investors should conduct detailed feasibility report before making final decision for investment.

It is worthwhile to mention that industrial sector in Punjab has grown gradually from 6,223 industrial units in 1975 to 17,857 industrial undertakings in 2010. Sectoral growth has also been registered, resulting in substantial value addition. Value addition chain can be maximized by processing the agricultural industrial waste like rice husk, cotton stock, maize and corn cob. Herbal products is another untapped area. Live Stock, Dairy Development and poultry are fast growing sectors. Processing of food products can fetch handsome dividends. Currently information technology sector is growing by 39% annually in Pakistan. Fashion

industry is also developing rapidly. Similarly, chemical sector has lot to offer by utilizing the available mineral resources as raw material.

Issue of energy shortage can be addressed by dealing with power generation as an industry. Local as well as foreign investors have golden opportunity to set up power generation stations based on coal and other alternate fuels, under the captive power plants policy allowed in the newly promulgated SEZ Act, 2012. Punjab offers very good opportunity to the local as well as foreign investors to set up small, medium and heavy industries in variety of sectors. It has a growing market of over 90 million consumers, abundant manpower / labour force and cheap raw material with reasonably controlled law & order.

The Industries, Commerce & Investment Department has sufficient institutional frame work of attached and autonomous bodies to look after the industrial issues. Directorate of Industries, Small Industries Corporation (PSIC), Board of Investment (PBIT), Punjab Industrial Estates Development and Management Company (PIEDMC), Faisalabad Industrial Estates Development and Management Company (FIEDMC) have blend of professionals from the public as well as private sector. These legal entities are working in close coordination with the Chambers of Commerce and Industries systematically to promote industrialization and trade.

Development schemes regarding establishment of Industrial Resource Centre at the Directorate of Industries, setting up Sports & Material Testing Lab at EPZ, Sambrial and Industrial Safety Institute are under consideration with the Planning and Development

Department. Completion of these schemes will definitely help in promotion of industrialization process with enhanced industrial safety.

I must record my appreciation to Mr. Muhammad Akram Awan, Senior Economist, who effectively planned, coordinated and provided the guidance to his team members for completion of this study. Credit also goes to Mr. Muhammad Jamil Chishty, Staff Economist for his dedicated support rendered in the completion process of this study and Mr. Waseem Haider, Stenographer, for his tireless typing and composition work on computer.

I am grateful to all the District Officers, Enterprise & Investment Promotion who provided the relevant information of their respective districts for incorporating in pre-investment studies. I am also thankful to various Provincial Departments for supplying the required data to the Directorate of Industries. My special thanks are due to Dr. Nasir Javed, Project Director, Urban Unit for the provision of digital maps and the Punjab Printing Press.

Any suggestion for the improvement of the study will be welcomed.

Dec. 31, 2012

**(Muhammad Siddique Sheikh)**  
Director Industries, Punjab

# Contents

---

Section	Page
<b>District at a Glance</b>	<b>1</b>
<b>1. Geographical Conditions</b>	<b>3</b>
1.1 Brief Description of the District	3
1.2 Climate and General Soil Conditions	3
<b>2. Man-Power</b>	<b>5</b>
2.1 Total Population of the District	5
2.2 Man-Power Availability	6
2.3 Traditional Crafts	9
2.4 Geographical Indications	9
<b>3. Natural Resources</b>	<b>11</b>
3.1 Agriculture	11
a) Main Crops	11
b) Main Fruits	12
c) Main Vegetables	12
3.2 Forests	13
a) Location of Forests and Area under Afforestation	13
b) Production of Timber and Fire-wood	14
3.3 Livestock Population	14
a) Animal Population	14
b) Poultry Population	15
c) Availability of Hides/Skins & Slaughter House Wastes	15
d) Production of Wool	15
3.4 Ores and Minerals	16



<b>4. Infrastructural Facilities</b>	<b>17</b>
4.1 Communication Network	17
a) Road Links	17
b) Rail Links	17
4.2 General Quality and Availability of Sub Soil Water	17
4.3 Effluent Disposal Facilities	17
4.4 Power Supply	18
4.5 Natural Gas Availability	18
4.6 Telecommunication Facilities	18
4.7 Social Infrastructural Facilities	18
4.8 Industrial Estates	19
4.9 Dry Port	19
4.10 Industrial Policy	19
4.11 Declaration of Negative Areas	24
4.12 Declaration of Positive Areas	25
4.13 Incentives for Investors to set a unit in EPZs	26
4.14 Pakistan's Investment Policy – Key Features	29
4.15 Industrial Financing Facilities	31
4.16 Salient Features of Loaning Scheme of PSIC	34
4.17 Salient Features of the SEZ Bill 2012	36
4.18 Strategic Trade Policy Frame Work (2012-2015)	37
<b>5. Existing Pattern of Industrial Development</b>	<b>43</b>
5.1 Description of Existing Industry	43
<b>6. Future Industrial Potential</b>	<b>45</b>
6.1 Agriculture	45
6.2 Livestock	46
6.3 Industry	47
6.4 Demand Based Industries	47
6.5 List of Identified Projects	47
<hr/>	
<b>Annex</b>	<b>Page</b>
<b>Directory of Industrial Establishment</b>	<b>49</b>
<b>List of Contact Nos.</b>	<b>67</b>
<b>Bibliography</b>	<b>69</b>

**DISTRICT AT A GLANCE**

1	Population (000 Numbers)	:	1,993
2	Area (Square Kilometres)	:	3,252
3	Population Density (per sq. km.)	:	613
4	Tehsils / Towns	:	Toba Tek Singh, Gojra and Kamalia.
5	Main Crops	:	Sugarcane, Wheat, Cotton, Maize, Rice, Moong, Masoor and Mash.
6	Main Fruits	:	Citrus, Guava and Mango.
7	Main Vegetables	:	Potato, Onion, Cauliflower and Ladyfinger.
8	Forest Resources (Area in Acres)	:	11,581
9	Mineral Resources	:	Nil
10	Total Metalled Roads (KM)	:	1,947.48
11	No. of Grid Stations	:	12
12	No. of Telephone Exchanges	:	35
13	Number of Industrial Units (Large Medium and Some Small Selected Sectors)	:	173

- 14 Type of Industrial Units : Agricultural Implements, Bicycle Parts, Cement Products, Chip/Straw Board, Cold Storage, Cotton Ginning & Pressing, Confectionery, Drugs & Pharmaceutical, Flour Mills, Leather Footwear, Marble, Poultry Feed, Power Generation, Rice Mills, Sizing of Yarn, Soap / Detergent, Sugar, Textile Spinning and Vermicelli's

## **CHAPTER - I**

### **GEOGRAPHICAL CONDITIONS**

#### **1.1 BRIEF DESCRIPTION OF THE DISTRICT**

District Toba Tek Singh adjoins the district Faisalabad on the East. On the West and North, its boundary touches Jhang district. Its South and South-Eastern side is bounded by river Ravi across which lies districts of Khanewal and Sahiwal.

District Toba Tek Singh is spread over an area of 3252 square kilometres comprising of following three tehsils.

- i) Toba Tek Singh
- ii) Gojra
- iii) Kamalia

#### **1.2 CLIMATE AND GENERAL SOIL CONDITIONS**

District Toba Tek Singh has extreme hot and cold climate. The land mainly comprises plains with river Ravi flowing on South Eastern side of the district. Most of the area of tehsil Kamalia is low lying and gets flooded during rainy season. The soil is fertile.



## CHAPTER - II

### MAN POWER

#### 2.1 TOTAL POPULATION OF THE DISTRICT

According to Punjab Development Statistics 2011, total population of Toba Tek Singh district is 1,993 thousand persons out of which 1016 thousand are males and 977 thousand are females. Density of population in the district is 613 persons per square kilometre.

Tehsil wise distribution of Urban and Rural population is given in Table-1

**TABLE-1**

#### Town-Wise Distribution of Urban & Rural Population

Town	Population (Thousand Nos.)		
	Urban	Rural	Total
Toba Tek Singh	74	682	756
Gojra	145	454	599
Kamalia	157	481	638
<b>Total</b>	<b>376</b>	<b>1617</b>	<b>1993</b>

Source: Punjab Development Statistics, 2011

## 2.2 MAN POWER AVAILABILITY

As regards availability of skilled labour, there are 11 technical / commercial / vocational institutions (8 for men and for 3 women) imparting training in various trades e.g. mechanical, electrical, auto-engineering, welding, wood working and commerce. Vocational institutions for women impart training in hand/machine embroidery, stitching and knitting. In all about 3363 technicians/artisans/workers are trained every year. The details are given in Table-2.

**TABLE - 2**

### Commercial and Technical Institutions

Sr #	Name & Description of Commercial / Technical Training Institutions	Types of Training Courses Offered	Duration of Course	Average No of Students Enrolled / Session
<b>For Men</b>				
1	Govt. Institute of Commerce, Near Chak No.711/JB, Kamalia	D.Com, B.Com (Degree)	24 Months	521
2	Govt. College of Commerce, Gufar Park, Painsara Road, Gojra	D.Com, B.Com (Degree),	24 Months	456

3	Govt. College of Commerce, Rajana Road, TT Singh	B.Com (Degree), D.Com	24 Months	560
4	Govt. Technical Training Institute, Kamalia	G-II (Ref. & AC, Auto & Farm, Electrician, Machinist), HV & AC, Electrical Wiring Technician	6 to 24 Months	394
5	Govt. Technical Training Centre (DMTC), Opposite Tehsil Office, Gojra	Electrician, Welder, Wood Work, Auto Mechanic, Turner, Wireman	6 Months	87
6	Govt. Technical Training Centre, (DMTC) Ghausia Chowk, Pir Mahal	Auto Mechanic, Electrician, Welder, Turner, Wireman	6 Months	75
7	Govt. Technical Training Institute, T.T.Singh	Auto Mechanic, Electrician, Industrial Electronics, Mechanist, HV & AC, Electrical wiring technician	6 to 24 Months	394



8	Govt. College of Technology, Kamalia.	Sugar Technology, DAE, Computer Information, Microsoft IT Academy, Technology, Textile Weaving Tech.	3 to 36 Months	352
<b>For Women</b>				
9	Govt. Vocational Training Institute, Akalwal Road, TT Singh	Beautician, Domestic Tailoring, Certificate in Computer Application, Vocational Certificate, Vocational Diploma	3 to 24 Months	197
10	Govt. Vocational Training Institute, Near City Police Station, Kamalia	Vocational Certificate, Vocational Diploma, Beautician, Domestic Tailoring, Certificate in Computer Applications	3 to 24 Months	103

11	Govt. Vocational Training Institute, Ghafar Park, Painsara Road, Gojra.	Vocational Certificate / Diploma, Beautician, Domestic Tailoring, Certificate in Computer Applications	3 to 24 Months	224
----	---	--	----------------	-----

Source: TEVTA

### 2.3 TRADITIONAL CRAFTS

Khaddar weaving is traditional craft of the district. It is popular due to its finish and feel.

### 2.4 GEOGRAPHICAL INDICATIONS

The Project Director (Geographical Indications), Industries, Commerce & Investment Department, Government of the Punjab has identified the following Important Geographical Indications in the district:

- Kamaliya Lungi
- Peer Mehal (Chappals)
- Kamaliya Khadar (Cloth)
- Captain Box
- Dari (Rug)
- Potato
- Sugarcane
- Maize
- Kinnow (Orange)



## CHAPTER - III

### NATURAL RESOURCES

#### 3.1 AGRICULTURE

##### a) Main Crops

Sugarcane, Wheat, Cotton Maize, Rice, Moong, Masoor and Mash are the main crops grown in the district. Production of these crops during the period 2008-09 to 2010-11 is given in Table - 3.

**TABLE-3**

**Production of Main Crops  
(2008-09 to 2010-11)**

Crop	Production (Th. M.Tons)		
	2008-09	2009-10	2010-11
Sugarcane	1881.38	1826.20	2421.99
Wheat	490.36	460.22	538.78
Cotton (000 Bales)	165.19	143.11	112.13
Maize	97.8	101	115.5
Rice	59.49	66.11	62.18
Moong	320	345	381
Masoor	60	73	50
Mash	20	20	11

Source: Directorate of Agriculture, Crop Reporting Service, Punjab

Besides, Jawar, Bajra, Gram, Oil Seed such as Rape / Mustard and Sunflower are also grown in minor quantities in the district.

b) Main Fruits

Citrus, Guava and Mango are main fruits grown in the district. Production of these fruits during the period 2008-09 to 2010-11 is given in Table - 4

**TABLE-4**

**Production of Main Fruits  
(2008-09 to 2010-11)**

Fruit	Production (M.Tons)		
	2008-09	2009-10	2010-11
Citrus	158960	122114	167633
Guava	19631	20360	33730
Mango	5701	5128	7693

Source: Directorate of Agriculture, Crop Reporting Service, Punjab

Besides, Pomegranate is also grown in minor quantity in the district.

c) Main Vegetables

Potato, Onion, Cauliflower and Ladyfinger are main vegetables grown in the district. Production of these vegetables during the period 2008-09 to 2010-11 is given in Table - 5

**TABLE-5**

**Production of Main Vegetables  
(2008-09 to 2010-11)**

Vegetable	Production (M.Tons)		
	2008-09	2009-10	2010-11
Potato	61715	76052	75356
Onion	5830	5008	6931
Cauliflower	7558	7637	7894
Ladyfinger	5076	5204	5016

Source: Directorate of Agriculture, Crop Reporting Service, Punjab

Besides, Turnip, Carrot, Peas, Chillies, Tomato and Garlic are also grown in the district in minor quantities.

### 3.2 FORESTS

#### a) Location of Forests and Area under Afforestation

An area of 11,581 Acres is under forest, which is about 1.44% of the total area of the district. There is also linear plantation of 629 Km alongside the roads/rails/canals in the district. Trees grown in the area are Kau, Phalai, Kikar and Shisham.

## b) Production of Timber and Firewood

The production of Timber and Fire-Wood in the district during the period 2008-09 to 2010-11 is given in Table 6.

**TABLE-6**

**Production of Timber & Firewood  
(2008-09 to 2010-11)**

Year	Production (Cubic Meter)	
	Timber	Firewood
2008-09	3939	756
2009-10	501	304
2010-11	1745	864

Source: Forestry, Wildlife and Fisheries Department

## 3.3 LIVESTOCK POPULATION

### a) Animal Population

The animal population of the district is given in Table - 7.

**TABLE - 7**

**ANIMAL POPULATION**

Animals	Population (Th Heads)
Goats	578
Buffaloes	510
Cattle	331
Sheep	50

Source: Livestock & Dairy Development Department.

## b) Poultry Population

As per Punjab Development Statistics 2011, there are 852 broiler and 499 layer poultry farms in the district having rearing capacity of 20,793 and 4,736 thousand birds respectively. There are 12 breeding farms having rearing capacity of 175 thousand birds.

## c) Availability of Hides / Skins and Slaughter House Wastes

As per Punjab Development Statistics 2011, 1,23,300 animals were slaughtered in recognized / un-recognized slaughter houses in the district during the year 2009-10, which is a fair estimate of the availability of hides and skins in the district.

The availability of slaughter house by - products is estimated as under:-

Blood	45.37 M.Tons
Bones	214.04 M.Tons
Tallow	40.81 M.Tons

## d) Production of Wool

The sheep population of 50 thousand heads in the district is expected to yield about 50 M.Tons of coarse wool annually.



### **3.4 ORES AND MINERALS**

There is no major mineral in the district.

## **CHAPTER - IV**

### **INFRASTRUCTURAL FACILITIES**

#### **4.1 COMMUNICATION NETWORK**

##### **a) Road Links**

The district has metalled road-length of 1947.48 Kilometres. The district is linked with Faisalabad, Jhang and Khanewal districts through metalled roads.

##### **b) Rail Links**

The district is linked with Faisalabad and Khanewal through railway network.

#### **4.2 GENERAL QUALITY AND AVAILABILITY OF SUB-SOIL WATER**

The sub soil water in the district is generally brackish. Good quality sweet water is, however, available along the banks of rivers and canals.

#### **4.3 EFFLUENT DISPOSAL FACILITIES**

The location of existing nullah in the district is suitable for effluent disposal. However, permission

from Irrigation and Power Department, Government of the Punjab, is necessary for discharge of effluent in the nullah.

#### **4.4 POWER SUPPLY**

There are 12 grid stations in the district (ranging in capacity from 66 KV to 132 KV).

#### **4.5 NATURAL GAS AVAILABILITY**

Natural gas is available in Toba Tek Singh, Kamalia and Gojra Tehsils.

#### **4.6 TELE-COMMUNICATION FACILITIES**

There are 35 telephone exchanges operating in the district (ranging in capacity from 50 lines to 4,500 lines). Cellular phone services are available in the district.

#### **4.7 SOCIAL INFRA-STRUCTURAL FACILITIES**

Social infra-structural facilities available in the district are given in Table - 8.

**TABLE - 8****SOCIAL INFRA-STRUCTURAL FACILITIES**

Tehsil	Primary / Middle / high / higher secondary School	College	Hospital	Police station	Railway stations	Post office	Banks
TT Singh	316	4	1	4	4	112	17
Gojra	222	3	1	3	3	75	10
Kamalia	254	3	1	4	5	72	9
Total	792	10	3	11	12	259	36

Source: Punjab Development Statistics 2011 / Respective District Offices.

**4.8 INDUSTRIAL ESTATE**

At present, there is no industrial estate in the district.

**4.9 DRY PORT**

There is no dry port in the district.

**4.10 INDUSTRIAL POLICY**

- Foreign investors are permitted to hold 100% of the equity of industrial projects without any permission of the Government.
- No prior Government sanction is required for establishment of an industry outside Ex-Municipal Territorial Limits of Town

Committees / Municipal Corporation irrespective of its cost and size except the following covered under schedule 'C':-

- a. Arms & Ammunition.
  - b. Security Printing Currency & Mint.
  - c. High Explosives.
  - d. Radio Active Substances.
  - e. Alcoholic Beverages or Liquors.
1. No industrial unit mentioned in Schedule-A of the notification No. AEA-III-4-3-9/91, dated 30.09.2002 or industrial unit exceeding a total cost of Rs. 100.00 million shall be set up within 10 miles (16 Kms) of international border:

**List of Manufacturing Industries**

- a) Basic Metal Industry.
- b) Petro-Chemical Industries (Excluding Products Industries).
- c) Large size Machine Tool Factories (Limit of Investment to be determined).
- d) Heavy Foundry Works.
- e) Heavy Electric Complexes.
- f) Heavy Mechanical Complexes.
- g) Electronics Industries.
- h) Major Vehicle Assembly Plants.
- i) Ordnance Factories.
- j) Explosives, Nitric acid and Sulphuric acid plants.
- k) Vehicular Tires and Tubes Industries.

- l) Locomotives and Railway Carriage manufacturing plants.
  - m) Government Mint.
  - n) Security Printing Press involved in whole time printing of sensitive documents / currency notes.
  - o) Manufacture of optical glass and optics.
  - p) Nickle cadmium battery industries.
  - q) Nuclear / Separation Plants.
  - r) Large Power Generating Stations.
  - s) Large oil Storage units.
  - t) Oil refineries.
2. No industrial unit shall be set up in areas affected by flood flowing transversely in the strip of one mile of either side across the Grand Trunk Road from Shahdara Town to Muridke Town, without prior permission of the Provincial Government.
3. According to the notification No. AEA-III-3-5/2003 (Vol-III), dated 06.12.2006, “no new sugar mill shall be setup and no enlargement in capacity of the existing sugar mills is allowed in the Province”.
4. Each district Government may declare “negative area” for industry. Such “negative area” be determined by a District Committee after consultation with all stake-holders in light of general policy guidelines issued by the Industries, Commerce & Investment

Department and exemptions allowed under Schedule 'B' of this Notification as under:

**List of Service Industries**

- a) Furniture (excluding Band Saw) and also excluding storing Timber / Wood.
- b) Tailoring/ Readymade garments.
- c) Laundry / Dry Cleaning.
- d) Bakery (excluding confectionery).
- e) Syrups ( excluding squashes)
- f) Cosmetics.
- g) Service workshop.
- h) Cereal Products like vermicilles.
- i) Candles making.
- j) Printing and Packaging.
- k) Hand loom carpet weaving.
- l) Hotels.
- m) Bidi manufacturing.
- n) Hand made shoes / shoe repairing workshop.
- o) Spooling and thread balls.
- p) Small Hosiery units employing not more than 10 workers.
- q) Atta Chakkies.
- r) Installation of Chaff cutters.
- s) Cotton Grading.
- t) Other small industrial undertakings which do not fall under the Sixth schedule of the Punjab Local Government Ordinance, 2001.

“Other small industrial undertakings” would mean an industrial undertaking in which the

total fixed assets (including the cost of land) do not exceed Rs.1.0 million (Rupees one million).

5. No industrial unit mentioned in Schedule 'C' of this Notification shall be set up anywhere in the Punjab without prior approval of the Government.
6. The Government reserves the right to refuse establishment / enhancement of any industrial undertaking which is in contravention of the public interest, ecology or any other law / rules for the time being in force.
7. The Government may relax any of the provisions of this notification in case of a particular unit or industry or class of units or industries.
8. NOC from Environment Protection Department, Govt. of the Punjab is required for setting up new Industries.
  - Tourism has been given the status of industry in accordance with Ministry of Industries & Production Circular No. 1-129/99-INV-IV dated 2<sup>nd</sup> August 1999.
  - The Housing and Construction Sector has also been declared as industry (Finance



Division Notification No. 10(10)/IF-11/98, dated 07.04.1999 and 04.06.1999.

- In accordance with Government notification No. 3(2)/97-INV-IV dated 05.05.1997, Computer Software and Information Technology (IT) have been declared as Industry.

#### **4.11 DECLARATION OF NEGATIVE AREAS**

In pursuance of the Clause 4 of the Location Policy notified on 30-09-2002, by the Industries, Commerce & Investment Department, Government of the Punjab, the District Govt. Toba Tek Singh has declared the following negative areas:

- a) No industrial unit mentioned in schedule 'A' & 'B' shall be set up within urban areas.
- b) No industrial unit shall be set up within the villages: if the proposed site of the industrial unit is located as such at unreasonable distance as may cause nuisance to the nearby residential localities.
- c) No industrial unit shall be established in the radius of five kilometre of flood area located in Tehsil Kamalia.
- d) No industrial unit shall be established where proper effluent disposal arrangements are not available at the site

to the satisfaction of the District Government.

#### **4.12 DECLARATION OF SPECIFIED POSITIVE AREAS**

Vide the Finance Act, 2008, the Government of Pakistan has enacted a new section “23A” in the Income Tax Ordinance 2001. The Section “23A” is reproduced below:-

“First year allowance.- (1) Plant, Machinery and equipment installed by any industrial undertaking setup in specified rural and under developed areas, and owned and managed by a company shall be allowed first year allowance in lieu of initial allowance under Section 23 at the rate specified in Part II of the third schedule against the cost of the “eligible depreciable assets” put to use after July 1<sup>st</sup>, 2008.

(2) The provision of Section 23 except sub-sections (1) and (2), thereof, shall mutatis mutandis apply.

The Federal Government may notify “Specified areas” for the purpose of sub-section(1)”

In pursuance of the above mentioned notification District Government TT Singh has identified and approved the following specified positive areas for setting up industrial undertakings:-

Tehsil	Specified positive Areas
TT Singh	<ul style="list-style-type: none"> <li>• Toba Jhang Road both sides form 5-km to onward.</li> <li>• Rajana Sumandari Road form 10-KM.</li> <li>• Toba Shorkot Road from 6<sup>th</sup> Km to onward.</li> </ul>
Gojra	<ul style="list-style-type: none"> <li>• Gojra Toba Road Bye Pass.</li> <li>• Gojra Mongi Road (State land available).</li> <li>• Gojra Dijkot Road.</li> <li>• Gojra Pensara Road.</li> <li>• Gojra Summandri Road.</li> </ul>
Kamalia	<ul style="list-style-type: none"> <li>• Kamalia Pirmahal Road both sides (state land available).</li> <li>• Pir Mahal Sindhilianwali Road form 3-KM.</li> <li>• Rajana Pir Mahal Road.</li> </ul>

#### 4.13 INCENTIVES FOR INVESTORS TO SETUP A UNIT IN EPZs

- a) According to EPZs Authorities, following incentives are available in the Export Processing Zones

1. 100% ownership rights.
2. 100% repatriation of capital & profits.
3. No minimum or maximum limit for investment.
4. Duty free imports of machinery, equipment & material.
5. No sales tax on input goods including electricity & gas bills.
6. Obsolete/old machinery can be sold in domestic market of Pakistan after payment of applicable duties & taxes.
7. Freedom from National import restrictions.
8. Foreign exchange control regulation of Pakistan not applicable.
9. Defective goods/waste can be sold in domestic market after payment of applicable duties, maximum upto 3% of total value of export.
10. Duty free vehicle allowed under certain conditions. After 5 years of use, vehicles can be disposed off in domestic market on payment of duty on depreciated value.
11. Domestic market of Pakistan available on same conditions as for imports from other countries.
12. Units operating in EPZs can undertake sub-contracting for units of tariff area subject to payment of duty and taxes on value addition only.

13. Only EPZA is authorized to collect Presumptive tax at the time of export of goods which would be final tax liability.
  14. EPZ units allowed to supply goods to Custom manufacturing bonds.
  15. Production oriented labour laws to be solely regulated by the Authority.
  16. EPZ manufacturer will be treated at par with bonded manufacturers in tariff area for any future incentives to be announced for exporters.
  17. Relief from double taxation subject to bilateral agreement.
- b) Facilities to Investors for setting up a unit in EPZs of Pakistan.
1. One window service and simplified procedure.
  2. All infrastructural facilities like water, electricity, gas, telex, fax and telecommunication system are made available by EPZA.
  3. Skilled & un-skilled labour available in abundance.
  4. Sub-contracting without limit on variety and quantity is allowed outside the zone as well as within the zone.
  5. The garment manufacturing units located in Export Processing Zones are eligible to participate in auction of quotas.

6. GSP concessions given by various countries to imports from Pakistan are available to the manufacturers in the zone.
7. Peaceful, secure and environmentally protected / pollution free work area.
8. Inter-unit transfer of finished goods among exporting units allowed.

#### **4.14 PAKISTAN'S INVESTMENT POLICY - KEY FEATURES**

##### ***General***

- The investment policy is liberal and business friendly as it has been designed in consultation with businessmen, investors and representative forums as well as the Multinational Companies (MNCs).
- It provides equal investment opportunities for both domestic and foreign investors.
- All economic sectors open for FDI (Foreign Direct Investment).
- 100% foreign equity allowed.
- No government sanction required.
- Foreign investment on repatriable basis is allowed in all economic sector including manufacturing, agriculture, services, infrastructure and social sectors.
- Foreign investment in Agriculture projects allowed on joint-venture basis by associating minimum local equity of 40%.
- Remittance of Royalty, Technical & Franchise Fee, Capital, Profits, Dividends allowed.

- Minimum foreign equity for non-manufacturing including services sector has been reduced from \$ 0.3 to \$ 0.15 million. In Agriculture, infrastructure and social sectors, it is \$ 0.3 million.

### ***Tariff and Tax Incentives***

- To keep Pakistan competitive in international tariff 5% customs duty has been allowed on import of plant and machinery which is not manufactured locally.
- Sales tax 0% across the board.
- 0% duty on import of raw material for export industry.
- 0% duty on import of agriculture machinery.
- Tax relief in shape of Initial Depreciation Allowance (IDA) has been provided as 50% of machinery cost across the board.
- Tax relief has also been provided for expansion and Balancing, Modernization & Replacement (BMR) in existing industries.

### ***Policy Package of Pakistan***

Policy Parameters	Mfg. Sector	Non-Manufacturing Sectors		
		Agriculture	Infrastructure & Social	Services including IT & Telecom Services
Govt. Permission	Not required except for specified industries*	Not required except specific licences from concerned agencies.		

Remittance of capital, profits, dividends, etc.	Allowed	Allowed		
Upper Limit of foreign equity allowed	100%	100%	100%	100%
Minimum Investment Amount (M \$)	No	0.3	0.3	0.15
Customs duty on import of PME**	5%	0%	5%	0-5%
Tax relief (IDA***, % of PME cost)	50%	50%		
Royalty & Technical Fee	No restriction for payment of royalty & technical fee.	Initial lump-sum up to \$100,000 Max Rate 5% of net sales - Initial period 5 years		

\* Specified Industries:

- i) Arms and ammunitions
- ii) High Explosives
- iii) Radioactive substances
- iv) Security Printing
- v) Currency and mint

\*\* PME = Plant, Machinery and Equipment

\*\*\* IDA = Initial Depreciation Allowance

#### 4.15 INDUSTRIAL FINANCING FACILITIES

Following Financial Institutions in the country are providing various types of fixed investment industrial financing in the foreign and local currency to the industrial sector for establishment



of new industrial units as well as for Expansion, Balancing, Modernization and Replacement (BMR) of existing industrial units within the frame-work of industrial/financial policies of the Government of Pakistan.

- 1 AlBaraka Bank (Pakistan) Limited.
- 2 Allied Bank Limited.
- 3 Askari Bank Limited.
- 4 Bank Alfalah Limited.
- 5 Bank Al-Habib Limited.
- 6 Bank Islami Pakistan Limited.
- 7 Barclays Bank PLC.
- 8 Burj Bank Limited.
- 9 Citi Bank N.A.
- 10 Deutsche Bank A.G.
- 11 Dubai Islamic Bank Pakistan Limited.
- 12 Faysal Bank Limited.
- 13 First Women Bank Limited.
- 14 Habib Bank Limited.
- 15 Habib Metropolitan Bank Limited.
- 16 HSBC Bank Middle East Limited.
- 17 Industrial and Commercial Bank of China
- 18 Industrial Development Bank of Pakistan.
- 19 JS Bank Limited.
- 20 KASB Bank Limited.
- 21 MCB Bank Limited.

- 22 Meezan Bank Limited.
- 23 National Bank of Pakistan.
- 24 NIB Bank Limited.
- 25 Oman International Bank S.A.O.G.
- 26 S.M.E. Bank Limited.
- 27 Samba Bank Limited
- 28 Silk Bank Limited.
- 29 Sindh Bank Limited.
- 30 Soneri Bank Limited.
- 31 Standard Chartered Bank (Pakistan) Limited.
- 32 Summit Bank Limited
- 33 The Bank of Khyber
- 34 The Bank of Punjab
- 35 The Bank of Tokyo-Mitsubishi Limited.
- 36 The Punjab Provincial Cooperative Bank Limited.
- 37 United Bank Limited.
- 38 Zarai Taraqiati Bank Limited.

---

Source: State Bank of Pakistan

***List of Development Financial Institutions (DFIs)***

- 1 Bankers Equity Limited.
- 2 House Building Finance Company Limited.
- 3 Pak Brunei Investment Company Limited
- 4 Pak-China Investment Company Limited.

- 5 Pak Oman Investment Company Limited.
- 6 PAIR Investment Company Limited.
- 7 Pakistan Kuwait Investment Co. Ltd.
- 8 Pak-Libya Holding Company Limited.
- 9 Saudi Pak Industrial & Agricultural Investment Company Limited.

---

Source: State Bank of Pakistan

Besides the financial institutions mentioned above a number of Leasing Companies, Modaraba Companies, Investment Banks are also providing financing facilities to the industrial sector. Punjab Small Industries Corporation also extends financial assistance to the small/cottage industrial units.

#### **4.16 SALIENT FEATURES OF LOANING SCHEME OF PSIC**

Punjab Small Industries Corporation (PSIC) is a body corporate enacted in 1973. One of core functions of PSIC is financial assistance programme for prospective entrepreneurs, skilled youth, artisans and craftsmen all over the Punjab. The priority sectors are as under:

- Service Industries.
- Agro / Agro Support Industries.
- Food Processing Industries.
- Export Oriented Industries.
- Import Substitution Industries.

- Information Technology (IT) Project.
- Handicraft Industry.
- Women Enterprises.

PSIC started credit assistance programme during 1984 and completed 13 schemes up till now. An amount of Rs. 4079 Million has been disbursed to 19,580 entrepreneurs in 36 Districts of Punjab with the recovery rate of 88% that indicates proper utilization of loans.

The maximum loan limit is Rs.3 Million with debit equity ratio of 60:40. The credit assistance facility available for new projects, BMR and Working Capital. The markup rate varies from 0% to 12%. The repayment period of loan is from 3 years to 6 years with grace period of 3 months to 6 months.

Recently, Government of Punjab has provided an amount of Rs. 2000 Million for disbursement through Service Provider Organization i.e. M/s Akhuwat to un-employed and skilled persons of PVTC, TEVTA, SANATZAR's of Social Welfare Department or other unemployed youth having good business plan.

Up till now, M/s Akhuwat has disbursed an amount of Rs. 1650.00 Million to 94,960 poor household in 33 vocations with average loan size of Rs. 17,382 in Punjab through its 142 offices in 30 districts of the Punjab.

To promote the traditional handicrafts in Punjab, PSIC has also launched dedicated credit assistance schemes for the craftsmen at subsidized markup rates. These craftsmen have also been provided marketing facilities through Pakistan Handicrafts Shops.

#### **4.17 SALIENT FEATURES OF THE SEZ BILL 2012**

The Law of SEZ has been made to meet the global challenges of competitiveness to attract FDI. The Law/bill will allow to create industrial clusters with liberal incentives, infrastructure, investor facilitation services to enhance productivity and reduce cost of doing business for economic development and poverty reduction. The Law further envisages to reduce processes through SEZ in Pakistan. The establishment of SEZs will attract both domestic as well as international investors. The SEZ would play a pivotal role in the economic development of Pakistan as has been witnessed in case of China, Malaysia, Thailand and other states.

It extends to the whole of Pakistan and overrides other laws (anything contrary);

- All SEZ whether Public, Public-Private or Private-Private to be governed under this Act;
- The Board of Approval (BOA) headed by the Prime Minister of Pakistan with the Minister for Finance as the Vice Chairman shall meet as

frequently as required but not less than twice a year and decisions shall be taken by a majority of the total membership present and voting;

- SEZs will have exemption from customs duties & taxes for all Capital Goods imported into Pakistan for the development , operations and maintenance of a SEZ;
- Exemption from all taxes on income accruable in relation to the development and operations of the SEZ for a period of ten years, starting from the date of signing of the Development Agreement.
- Zone Enterprises have exemption from custom duties etc. on imports of Capital Goods;
- Exemption from taxes on income for a period of 10 years starting from the date the Development certifies that the Zone Enterprise has commenced commercial operations in the relevant SEZ;

There is no limit to the economic potential of Pakistan. The challenge is to create the enabling environment in which this can be realized. Special Economic zones bill is a step towards the economic stability in the country.

#### **4.18 STRATEGIC TRADE POLICY FRAME WORK (2012-2015)**

The government unveiled on 29 January, 2013 a medium term (2012-2015) Strategic Trade Policy Framework, setting a cumulative export target of \$95 billion for three years. The framework, the second announced by the federal government will be implemented with a funding of Rs. 26.14 billion. In the first year, Rs.5 billion will be spent on providing subsidies and support to identified sectors.

The focus of the policy is on promoting regional trade and regulatory efficiency, promoting agro-processed exports, increasing exports from less developed regions, revamping export promotion agencies, increasing green exports, enhancing role of women in exports and pursuing product and market development and diversification.

The salient features of the policy include institutional interventions, export development initiatives and regulatory amendments. The policy, offers cash assistance to 14 sectors along with 19 regulatory frameworks, including ban on products as a protective measure against environmental and health hazards. The new framework is designed to provide assistance only to the non-textile sectors.

***Institutional Measures:*** The government will setup institutions like an Export-Import (Exim) Bank, Pakistan Land Port Authority; Leather

Export Promotion Council and a Services Trade Development Council.

**Export Development:** Major initiatives in the Policy included allowing mark-up rate support of two per cent on prevailing LTFF for future import and purchase of machinery. An allocation of Rs.500 million has been proposed for schemes to be implemented this year. The total amount to be spent in three years is projected at Rs.3 billion. A mark-up support of 1.5% will be provided on export finance scheme (EFS) to selected sectors at a cost of Rs. 1.25 billion, including Rs. 200 million in 2012-2013.

The sectors for EFS support are fish and fish preparations, fruit and vegetables, spices, meat and meat preparations, carpets and rugs, sports goods, footwear, leather products, surgical goods, cutlery, onyx products, pharmaceuticals, electric fans, transport equipment, electrical machinery, specialized machinery, furniture, handicrafts and computer-related services.

An amount of Rs.14 billion will be given as adhoc relief at three per cent of FoB to offset the impact of higher cost of utilities for exporters in selected sectors. The measure will cost Rs.3bn this year. An amount of Rs.2 billion-Rs125 million will be allocated for marketing development assistance for regional countries.



A Rs 25 million allocation has been proposed for export promotion campaigns for agro-processed products; Rs. 400 million for encouraging opening of retail outlets; and Rs.400m for subsidizing 50% cost of plant and machinery for establishing processing plants for meat, fruits, vegetables, dates and olives in Azad Jammu and Kashmir, Baluchistan, Gilgit - Baltistan and Khyber Pakhtunkhwa.

An amount of Rs.30 million will be allocated for upgrading rice inspection laboratories, Rs. 20 million for subsidy at 100% of the prevailing mark-up rate for establishing mining and processing units in Khyber Pakhtunkhwa and Baluchistan.

Another Rs.20 million has been allocated for strengthening women's chamber of commerce and industry, Rs.32 million for setting up a resource management cell at the ministry of commerce, Rs.28 million for establishing leather export promotion council and Rs.70 million for services export development council.

### ***Regulatory Measures***

Unrestricted import of used motorized wheelchairs and five-year-old used or second-hand ambulances has been allowed. Two per cent of export proceeds will be allowed to manufacturers-cum-exporters for duty-free import of accessories for value-addition for leather garments and made-ups.

Import of non-hazardous plastic scrap has been allowed for industrial consumers for use as raw material. A ban has been imposed on import of plastic waste, hospital waste, used sewerage pipes and chemical containers.

Import of non-sterilized surgical needles and syringes will be restricted to industrial units, condition of Euro-II may be made applicable on import of all types of specialized vehicles, such as crane-mounted lorries, dump trucks and mixtures lorries. The import of used sprinkle lorries will be restricted to a maximum of five year old. All goods from banned list imported in commercial quality shall be allowed to re-export at importer/shipping lines cost. The imported substandard goods from the restricted list should be destroyed within a period of six months without offering any release.

Import of waste and scrape of tyres in completely shredded/ cut form will only be allowed to industrial consumers; domestic standards will equally apply to imported goods as well.

Construction engineering and electrical companies will be allowed to retain abroad the exported machinery to carry out work on export-cum-import basis with the condition that they will import the same on the conclusion of the contract against indemnity bond.

All exporters of edible products are to be registered and export of vegetable ghee and cooking oil will be allowed in packaging of up to 25kg to encourage value-addition.

### ***Steps to contain Environmental & Health Hazards***

- Ban on import of plastic waste/scrap-hospital waste, used sewerage pipes and chemical containers.
- Restricting import of non-sterilized surgical needles and syringes to industrial units.
- Only the more fuel efficient Euro-II category crane-mounted lorries, dump trucks, mixture lorries, etc, will be imported.
- Imported used tyres will only be allowed for industrial use.

### ***Institutions to be Setup***

- Export-Import Bank.
- Pakistan Land Port Authority.
- Leather Export Promotion Council.
- Service Trade Development Council.

## CHAPTER - V

### EXISTING PATTERN OF INDUSTRIAL DEVELOPMENT

#### 5.1 DESCRIPTION OF EXISTING INDUSTRIES

There are about 173 large, medium and some small industrial units in the district. Industry-wise installed capacity of major industrial units is given in Table-9.

**TABLE-9**

#### Industry-wise Installed Capacity

Sr. #	Industry	No. of units	Annual Installed Capacity
1	Agricultural Implements	22	9560 Nos.
2	Bicycle Parts	2	75 Lac.
3	Cement Products	7	9300 M. Tons
4	Chip/Straw Board	1	7500 Lac Sq.Ft.
5	Cold Storage	19	294500 Bags
6	Cotton Ginning & Pressing	31	150 Sawgins, 31 Press
7	Confectionery	1	18 M.Tons
8	Drugs & Pharmaceutical	2	96000 Kg., 187000 Litres
9	Flour Mills	13	2000 M. Tons /Day
10	Leather Footwear	13	46050 Pairs
11	Marble Industry	9	33300 M. Tons
12	Poultry Feed	13	130000 M.Tons
13	Power Generation	1	2.360 MW
14	Rice Mills	17	14 Sheller, 7 Hullers
15	Sizing of Yarn	11	6000 M.Tons

---

16	Soap / Detergent	1	100 M.Tons
17	Sugar	2	20000 TCD
18	Textile Spinning	5	65896 Spindles, 680 Rotors
19	Vermicelli's	3	1850 M.Tons

**Source:** District Officer (E&IP), Vehari.

**Note:** For further details visit: [www.doi.pitb.gov.pk](http://www.doi.pitb.gov.pk)

## CHAPTER - VI

### FUTURE INDUSTRIAL POTENTIAL

Keeping in view the availability of raw-material, skilled labour, industrial units, local / national / international demand, future industrial potential of district Toba Tek Singh is discussed hereunder:-

It would, however, be kept in mind that though the above mentioned factors facilitate the success of any industrial unit, yet the entire success depends upon the investors / entrepreneurs and the capabilities of the personnel having the managerial control. Therefore, it is advisable that detailed feasibility of industrial project must be carried out before making final decision for investment.

#### 6.1 AGRICULTURE

Main Crops of district TT Singh are Wheat, Sugarcane, Cotton, Maize, Rice, Moong, Masoor and Mash. The average annual production of Wheat, Sugarcane, Maize, Cotton, Rice, Moongh and Mash during the period 2008-09 to 2010-11 was 496.45, 2043.19, 104.77, 62.59, 348.67, 61 & 17 thousand M. Tons respectively and of cotton was 140.14 thousand bales.

Among fruit, citrus, Guava and Mango are abundantly grown in the district. The annual

average production was 149.569, 24.574 and 6.174 thousand M. Tons over the period 2008-09 to 2010-11. A variety of vegetables are also grown (Chapter-3, Section 3.1).

At present, in district TT Singh, there are 2 Sugar Mills, 5 Textile Spinning, 13 Flour Mills, 11 Yarn Sizing Units and 31 Cotton Ginning/Pressing factories (Chapter-5, Section 5.1).

In view of the availability of raw-materials and existing industries, there exists good scope for textile spinning mills, fruit juice/citrus concentrate, vegetable dehydration, solvent oil extraction and rice husk briquettes, etc.

## **6.2 LIVESTOCK**

As per Punjab Development Statistics 2011, the population of Cattle, Buffaloes, Sheep and Goat was 331, 510, 50 and 578 thousand heads respectively. The availability of hides and skins is estimated at 123300 pieces annually. As regards poultry, there are 852 Broilers farms, 449 Layer farms and 12 Breeding farms having rearing capacity of 20793, 4736 and 175 thousand birds respectively (Chapter-3, Section 3.3).

In view of the above, there exist scope for Dairy Farms, Cattle / Goat / Sheep Fattening Farms, Poultry Processing Unit, Egg Yolk Powder and a Tannery.

### **6.3 INDUSTRY**

The major industrial units of district are 2 Sugar Mills and 5 Textile Spinning Mills. However, a careful study based on bagasse, forest resources, wheat straw, waste paper and imported wood pulp may reflect a feasible prospect for a paper and board mills.

Besides, sugar mills, there are a number of power looms units, in the district, which reflect very good prospect for textile processing unit, hosiery, bed wear and durries, etc.

### **6.4 DEMAND BASED INDUSTRIES**

In view of general localized requirements of district TT Singh and existing industrial pattern, there exists good prospects for Straw Board, RCC Pipes / Girders / Slabs, Electrical Accessories, Wire Gauze Weaving, PVC Foot Wear, Poultry Farm Equipment, Plastic Flush Tanks, Steel Doors and Windows, etc.

### **6.5 LIST OF IDENTIFIED PROJECTS**

As per discussion given in Section 6.1 to 6.4, the following projects are identified for investment in District Toba Tek Singh:



- Agriculture waste, by products raw material based industries for maximization of value addition chain
- Bed-Wear
- Cattle/Sheep/Goat Fattening Farm
- Durries
- Dairy Farms
- Egg Yolk Powder
- Electrical Accessories
- Energy conservation / efficiency
- Fruit Juice/Citrus Concentrate
- Hosiery
- Poultry Processing Unit
- Paper and Board Mill
- Poultry Farm Equipment
- Plastic Flush Tanks
- Power generation through coal and other alternate fuels
- Power generation through bagasse
- Rice Husk Briquettes
- RCC Pipes/Girders/Slabs
- Straw Board
- Solvent Oil Extraction
- Steel Doors / Windows
- Tannery
- Textile Spinning Mills
- Vegetable Dehydration
- Waste heat recovery system
- Wire-Gauze Weaving

**Directory of Industrial Establishments, Toba Tek Singh**

Sr. No.	Name / Address of unit	Phone No. / Website	Industry	Estb. Year	Investment (Th.Rs.)	Emp	Product	Annual Installed Capacity
1	Akbar Iftikhar Zari Industries Moongi Road Near GB.Stand Gojra	3515045	Agricultural Implements	1977	1800	12	Agricultural Implements	300 Nos.
2	Barkat Wheat Thresher Sammundri Road Gojra	2515395	Agricultural Implements	1985	2063	2	Agricultural Implements	210 Nos.
3	Fahid Engg Works Shorkot Road Pir Mahal Kamalia	3360191	Agricultural Implements	1999	2000	2	Agricultural Implements	100 Nos.
4	Hakeem Wheat Thresher Sammundri Road Gojra	3516088	Agricultural Implements	1990	670	2	Agricultural Implements	280 Nos.
5	Ilyas Agricultural Implements, Summandri Road, Gojra		Agricultural Implements	2005	1000	4	Agricultural Implements	200 Nos.
6	Jaja Industries Waryam Road Zila Colony	2512163	Agricultural Implements	1995	1260	2	Agricultural Implements	200 Nos.
7	Kisan Wheat Thresher Jhang Road Gojra	3516369	Agricultural Implements	1990	3660	2	Agricultural Implements	250 Nos.
8	Madina Zari Industry Sammundri Road Gojra	3510526	Agricultural Implements	1978	6940	15	Agricultural Implements	300 Nos.
9	Mirza Anwar Hull Maker O/S Sabzi Mandi	0301-7288384	Agricultural Implements	1986	400	300	Agricultural Implements	300 Nos.
10	Mirza Bashir Agricultural Implements, Shorkot Road, Toba		Agricultural Implements	1972	900	4	Agricultural Implements	250 Nos.

Sr. No.	Name / Address of unit	Phone No. / Website	Industry	Estb. Year	Investment (Th.Rs.)	Emp	Product	Annual Installed Capacity
11	Mirza Imdad Agricultural Implements, Sabzi Mandi Road, Toba	0334-6265374	Agricultural Implements	1996	400	3	Agricultural Implements	100 Nos.
12	Mirza Shukat Engineering Works, Summandri Road, Gojra		Agricultural Implements	2005	900	4	Agricultural Implements	250 Nos.
13	Mukhtar Ahmed Karah Makers Shorkot Road	2512935	Agricultural Implements	1991	400	3	Agricultural Implements	100 Nos.
14	New Sultania Engineering Works Samundri Road Gojra	3511471	Agricultural Implements	1970	6360	18	Agricultural Implements	170 Nos.
15	Pakistan Wheat Threshers Samundri Road Gojra	3510500	Agricultural Implements	1980	1200	10	Agricultural Implements	100 Nos.
16	Prince Agricultural Implements, Summandri Road, Gojra		Agricultural Implements	2006	1100	4	Agricultural Implements	200 Nos.
17	Qasim Engineering Works Chak No.323/Jb Trandi Gojra Road	2515714	Agricultural Implements	1980	5270	14	Agricultural Implements	2500 Nos.
18	Riaz Pervaiz Engineering Gojra Mochi Wala Road Gojra	3511155	Agricultural Implements	1982	2690	13	Agricultural Implements	110 Nos.
19	Saleem Bashir Engineering Works Rajana Road	2511995	Agricultural Implements	1988	1100	5	Agricultural Implements	250 Nos.

Sr. No.	Name / Address of unit	Phone No. / Website	Industry	Estb. Year	Investment (Th.Rs.)	Emp	Product	Annual Installed Capacity
20	Yadgar Engg. Works Samundri Road Gojra	3511187	Agricultural Implements	1987	4530	13	Agricultural Implements	190 Nos.
21	Zafar Javed Wheat Thresher, Mungi Road, Bus Stand, Gojra	3515045	Agricultural Implements	1977	1800	12	Agricultural Implements	300 Nos.
22	Zafar Javed Zari Industry Chowk Jamia Charighia Gojra	3510377	Agricultural Implements	1977	2500	11	Agricultural Implements	300 Nos.
23	Punjab Stand Carrier Makers, Near General Bus Stand, Gojra	3512942	Bicycle Parts	1995	560	5	Cycle Parts	45 Lac
24	Super Star Stand Carrier Makers, Near General Bus Stand, Gojra	3510334	Bicycle Parts	1999	450	3	Cycle Parts	30 Lac
25	Azam Cement Products, Pansara Road, Gojra	0301-7238465	Cement Products	2009	300	6	Cement Products	1200 M. Tons
26	Javed R.C.C. Pipe Factory, Rajana Road		Cement Products	1980	560	4	Cement Products	1200 M. Tons
27	Junaid R.C.C. Pipe Factory, Rajana Road	2515540	Cement Products	1996	500	6	Cement Products	1500 M. Tons
28	Khalid Pipe Cement Factory, Jhang Road, Nia Lahore, Gojra	0301-7232335	Cement Products	2001	782	6	Cement Products	1200 M. Tons
29	Rana Cement Factory, Pansara Road, Gojra	0300-8658277	Cement Products	2010	300	7	Cement Products	1200 M. Tons

Sr. No.	Name / Address of unit	Phone No. / Website	Industry	Estb. Year	Investment (Th.Rs.)	Emp	Product	Annual Installed Capacity
30	Sakhawat Cement Products, Faisalabad Road, Rajana		Cement Products	1994	1500	7	Cement Products	1500 M. Tons
31	Yasin R.C.C. Pipe Factory, Chak No.318/Jb, Gojra Road		Cement Products	1995	300	10	Cement Products	1500 M. Tons
32	Hamza Board (Pvt) Ltd. Pensara Road Gojra	3548119	Chip / Straw Board	1992	15680	70	Chip Board	7500 Lac Sq.Ft.
33	Agro Cold Storage Factory Mendiabad Road Gojra	3511893	Cold Storage	1980	1500	5	Vegetable/ Fruits	12000 Bags
34	Akrama Industries (Pvt) Ltd. Gojra	3511336	Cold Storage	1978	2820	6	Vegetable/ Fruits	17000 Bags
35	Al-Hermain Cold Storage, Pansara Road, Gojra	3510862	Cold Storage	2010	2000	13	Vegetable/ Fruits	20000 Bags
36	Altaf Industries (Pvt) Ltd. Jhang Road, Gojra	3511840	Cold Storage	2005	2980	6	Vegetable/ Fruits	12000 Bags
37	Awami Cold Storage Samundri Road, Gojra	3512040	Cold Storage	1980	2624	8	Vegetable/ Fruits	5000 Bags
38	Azhar Cold Storage, Samundri Road, Gojra	3510266	Cold Storage	1990	4000	5	Vegetable/ Fruits	17000 Bags
39	Aziz Cold Storage, Mehdiabad, Gojra	3510323	Cold Storage	1989	3600	7	Vegetable/ Fruits	15000 Bags

Sr. No.	Name / Address of unit	Phone No. / Website	Industry	Estb. Year	Investment (Th.Rs.)	Emp	Product	Annual Installed Capacity
40	B.R. Cold Storage, Rajana Road, Kamalia	3416027	Cold Storage	2004	6200	7	Vegetable/ Fruits	8000 Bags
41	Hassan Cold Storage, Rajana Road, Kamalia	0300-7233972	Cold Storage	2010	7000	3	Vegetable/ Fruits	20000 Bags
42	Hussainia Cold Storage, Dijkot Road, Near Gbs, Gojra	3512247	Cold Storage	1988	1500	4	Vegetable/ Fruits	10000 Bags
43	Kamalia Cold Storage, Rajana Road, Kamalia	3412449	Cold Storage	1978	1500	3	Vegetable/ Fruits	15000 Bags
44	Lasani Cold Storage, Jhakkar Road, Kamalia	0300-7971573	Cold Storage	2010		4	Vegetable/ Fruits	32000 Bags
45	Mehroze Cold Storage, Pensara Road, Gojra	3511834	Cold Storage	1995	8000	7	Vegetable/ Fruits	7500 Bags
46	Muzaffar Cold Storage, Mehdiabad Road, Gojra	3515231	Cold Storage	1990	1150	6	Vegetable/ Fruits	12000 Bags
47	Pakistan Cold Storage, Shorkopt Pirmahal Road, T.T.Singh	0332-8526471	Cold Storage	2010	250	3	Vegetable/ Fruits	15000 Bags
48	Sanwar Cold Storage, Mehdiabad Road, Gojra	3512430	Cold Storage	1992	5000	6	Vegetable/ Fruits	8000 Bags
49	Tariq Ice & Cold Storage, Pensara Road, Gojra	3516064	Cold Storage	1994	2000	4	Vegetable/ Fruits	15000 Bags

Sr. No.	Name / Address of unit	Phone No. / Website	Industry	Estb. Year	Investment (Th.Rs.)	Emp	Product	Annual Installed Capacity
50	Umar Cold Storage, Jhang Road, Gojra	3516056	Cold Storage	1978	2000	6	Vegetable/ Fruits	7000 Bags
51	Zahid Cold Storage Pansara Road, Gojra	3510311	Cold Storage	2007	2000	25	Vegetable/ Fruits	47000 Bags
52	Vilal Food Industries, 249/Gb	341362149	Confectionery	1993	210	2	Sweets	18 M.Ton
53	Adeel Cotton Ginning & Pressing Mills Chak No.244/Gb Mongi Bunglow, Gojra	3415541, 3445344	Cotton Ginning And Pressing	1992	18083	28	Cotton Lint /Seed	4 Sawgins, 1 Press
54	Al-Rehmat Cotton Ginning (Pvt) Ltd., Adda Mongi Bunglow Killianwala Road Gojra	3445156	Cotton Ginning And Pressing	1992	4550	17	Cotton Lint /Seed	4 Sawgins, 1 Press
55	Ch.Cotton Ginning & Pressing Factory Sindlianwali Road, Pirmahal	3311311	Cotton Ginning And Pressing	1987	3500	30	Cotton Lint /Seed	4 Sawgins , 1 Press
56	Chenab Cotton Ginnign Factory Chak No.299/Gb	2512372 - 73	Cotton Ginning And Pressing	1997	5960	30	Cotton Lint/ Cotton Seed	5 Sawgins , 1 Press
57	Chenab Industries Khuman Wala Road	2512372	Cotton Ginning And Pressing	1974	12500	60	Cotton Lint /Seed	8 Sawgins , 1 Press

Sr. No.	Name / Address of unit	Phone No. / Website	Industry	Estb. Year	Investment (Th.Rs.)	Emp	Product	Annual Installed Capacity
58	Dada Cotton Ginning & Pressing Mills Sindhlianwala Road, Pirmahal	3360586, 3360379	Cotton Ginning And Pressing	1980	8000	18	Cotton Lint /Seed	5 Sawgins , 1 Press
59	Farooq Murtaza Cotton Mills (Pvt) Ltd 6.K. Mochiwala Road,	2511957-58	Cotton Ginning And Pressing	1992	5560	16	Cotton Lint /Seed	8 Sawgins , 1 Press
60	Gojra Cotton Ginning Factory Jhang Road,Gojra	3510330	Cotton Ginning And Pressing	1987	4650	C	Cotton Lint /Seed	4 Sawgins , 1 Press
61	Gulshan Cotton Ginning & Pressing Factory Sindhlianwali Road, Pirmahal	3360660, 3361166	Cotton Ginning And Pressing	1992	4800	20	Cotton Lint /Seed	4 Sawgins , 1 Press
62	Haidar Cotton & Oil Factory Industries, Rajana Road, Phloor	2540054-55	Cotton Ginning And Pressing	1991	4000	28	Cotton Lint /Seed	5 Sawgins , 1 Press
63	Ikrama Cotton Factory Jhang Road Gojra	3511332-33, 3511337	Cotton Ginning And Pressing	1978	5540	26	Cotton Lint /Seed	5 Sawgins , 1 Press
64	Inayat Cotton Ginning & Pressing Factory Sindhlianwali		Cotton Ginning And Pressing	1987	3400	14	Cotton Lint /Seed	4 Sawgins , 1 Press
65	Ittefaque Cotton Ginning & Oil Mills, Chak 253/Gb, Soondh Samundri Rd	2540486	Cotton Ginning And Pressing	1990	3640	30	Cotton Lint /Seed	4 Sawgins , 1 Press



Sr. No.	Name / Address of unit	Phone No. / Website	Industry	Estb. Year	Investment (Th.Rs.)	Emp	Product	Annual Installed Capacity
66	M.N.A. Cotton Factory (Pvt) Ltd., Sindhlianwali Road Pir Mahal	3361771-72	Cotton Ginning And Pressing	1994	17500	24	Cotton Lint/ Cotton Seed	6 Sawgins , 1 Press
67	Madina Cotton Industries Pensara Road Gojra	3548294	Cotton Ginning And Pressing	1979	8200	29	Cotton Lint /Seed	4 Sawgins , 1 Press
68	Mahmood Cotton Ginners, Pansara Road, Gojra	3510431-2, 3415156	Cotton Ginning And Pressing	1975	18175	36	Cotton Lint /Seed	5 Sawgins , 1 Press
69	Mashallah Cotton Ginning Mills (Pvt) Ltd. Chak # 100 Gb, Monghi Road, Gojra	3445160	Cotton Ginning And Pressing	1980	14000	30	Cotton Lint /Seed	5 Sawgins , 1 Press
70	Mongi Cotton Ginning Mills (Pvt) Ltd; Chak No.160 Gb Monghi Gojra	3445156, 3445157	Cotton Ginning And Pressing	1992	9500	22	Cotton Lint /Seed	6 Sawgins , 1 Press
71	Muhammad Mustafa C/G & Oil Mills (Pvt) Ltd. Chak No.352 Mouchiwala Road, Gojra	3511382	Cotton Ginning And Pressing	1992	6520	17	Cotton Lint /Seed	4 Sawgins , 1 Press
72	Muqadas Cotton Ginning & Oil Mills, Shorkot Road, Kamalia	3413995	Cotton Ginning And Pressing	1986	11232	17	Cotton Lint /Seed	5 Sawgins , 1 Press
73	Nayab Cotton Ginning (Pvt) Ltd. Chak 242 Gb Gojra	3524662	Cotton Ginning And Pressing	1993	12201	15	Cotton Lint /Seed	5 Sawgins , 1 Press

Sr. No.	Name / Address of unit	Phone No. / Website	Industry	Estb. Year	Investment (Th.Rs.)	Emp	Product	Annual Installed Capacity
74	Noor Iqbal Factory, Chak No.321, Shorkot		Cotton Ginning And Pressing	1982	3100	26	Cotton Lint /Seed	4 Sawgins , 1 Press
75	Phalour Cotton Ginning Factory (Pvt) Ltd. Phalore Chak 256/Gb	2540474-5	Cotton Ginning And Pressing	1994	16190	13	Cotton Lint /Seed	4 Sawgins , 1 Press
76	Punjab Cotton Ginning Factory (Pvt) Ltd; Adda Phloor Rajana Summandri Road	2540059-60	Cotton Ginning And Pressing	1991	15205	46	Cotton Lint /Seed	4 Sawgins , 1 Press
77	Rahbar Cotton Ginning & Pressing Fctory Jhang Road Gojra	514872	Cotton Ginning And Pressing	1990	8255	26	Cotton Lint /Seed	4 Sawgins , 1 Press
78	Rajana Cotton Factory (Pvt) Ltd Sammundi Road,	264211	Cotton Ginning And Pressing	1991	3500	27	Cotton Lint /Seed	4 Sawgins , 1 Press
79	Rehan Cotton Ginning Factory (Pvt) Ltd. Rajana Road, Pir Mahal	3366424, 3361140	Cotton Ginning And Pressing	1991	6800	40	Cotton Lint /Seed	8 Sawgins , 1 Press
80	Shorkot Cotton Ginning & General Mills Chak No.327-Shorkot Road	5500745	Cotton Ginning And Pressing	1952	5000	30	Cotton Lint /Seed	5 Sawgins , 1 Press
81	Top Cotton Ginning (Pvt) Ltd. Chak 251/Gb		Cotton Ginning And Pressing	1992	4000	C	Cotton Lint /Seed	4 Sawgins , 1 Press

Sr. No.	Name / Address of unit	Phone No. / Website	Industry	Estb. Year	Investment (Th.Rs.)	Emp	Product	Annual Installed Capacity
82	Umar Bilal Industries (Pvt) Ltd Jhang Road Gojra	3511140	Cotton Ginning And Pressing	1991	4500	C	Cotton Lint/ Cotton Seed	4 Sawgins , 1 Press
83	Zain Cotton (Pvt) Ltd. Sindlianwala Road Pir Mahal	3360888	Cotton Ginning And Pressing	1992	2584	25	Cotton Lint /Seed	5 Sawgins , 1 Press
84	Saleemi Pharmacy Unani Medicines, Chak No.296/Gb, Gojra		Drugs & Pharmaceu ticals	1991	600	6	Medicines Liquid	6000 Kg 12000 Litre
85	Vital Mark Laboratories (Pvt) Ltd. Chak No. 249/Gb, Gojra Muridwala Road	2528353	Drugs & Pharmaceu ticals	1993	5000	12	Tablets, Syrup	90000 Kgs., 175000 Litres
86	Al-Fateh Flour Mills, Fazal Dewan, Kamalia	3412406	Flour Mills	1990	5000	9	Flour	40 M.Tons /Day
87	Babar Flour Industry (Pvt) Ltd. Samundri Road Rajana	263542	Flour Mills	1988	17500	20	Flour	160 M.Tons /Day
88	Cheema Flour Mills, Mochiwala Road, Gojra	3512900, 3512430	Flour Mills	1998	16000	31	Flour	160 M.Tons /Day
89	Gohar Flour & General Mills (Pvt) Ltd; Mongi Road Gojra	3510391, 3510491	Flour Mills	1992	9010	17	Flour	200 M.Tons /Day
90	Gojra Flour & General Mills Pansara Road Gojra	3510842	Flour Mills	1981	12550	20	Flour	160 M.Tons /Day

Sr. No.	Name / Address of unit	Phone No. / Website	Industry	Estb. Year	Investment (Th.Rs.)	Emp	Product	Annual Installed Capacity
91	Golden Flour & General Mills Toba Road Gojra	3512345	Flour Mills	1998	10782	19	Flour	240 M.Tons / Day
92	Khokhar Flour Mills Akal Wala Road	2510991	Flour Mills	1991	17301	19	Flour	160 M.Tons /Day
93	Madina Flour Mills Jhang Road	2511967	Flour Mills	1984	13945	20	Flour	160 M.Tons /Day
94	Malik Flour Mills, Jhakkar Road, Kamalia	3414408	Flour Mills	1996	8000	25	Flour	160 M.Tons /Day
95	Pirmahal Flour Mills (Pvt) Ltd; Pir Mahal Sindhilianwali Road Pir Mahal	3360776	Flour Mills	1997	188000	19	Flour	160 M.Tons /Day
96	Prime Flour Mills, Pansara Road, Gojra	3548131	Flour Mills	2008	10200	19	Flour	160 M.Tons /Day
97	Tufail Flour Mills (Pvt) Ltd. Summandri Road, Gojra	3510738	Flour Mills	2008	8050	17	Flour	240 M.Tons /Day
98	Wheat Millers Ghalla Mandi Road Kamalia	3415577	Flour Mills	1995	2450	13	Flour	160 M.Tons /Day
99	Asama Enterprises, Sammundri Road, New Gulzar Cinema, Gojra	2510749	Leather Footwears	2002	850	40	Leather Footwears	15000 Pairs
100	Butt Shoes Factory Sammundri Road Gojra	3513401	Leather Footwears	1995	6600	33	Leather Footwears	70000 Pairs
101	Butt Shoes Factory, Waryam Road Toba Tek Singh	0321-7534310	Leather Footwears	2010	210	5	Leather Footwears	10000 Pairs

Sr. No.	Name / Address of unit	Phone No. / Website	Industry	Estb. Year	Investment (Th.Rs.)	Emp	Product	Annual Installed Capacity
102	Hanif Shoes Factory Mundar Block Pir Mahal		Leather Footwears	1991	200	10	Leather Footwears	10000 Pairs
103	Ittehad Shoes Factory Waryam Road		Leather Footwears	1993	210	9	Leather Footwears	7500 Pairs
104	Minthar Shoes Factory Awami Basti	0301-7293721	Leather Footwears	2001	1550	18	Leather Footwears	8000 Pairs
105	Muhammad Akram Mohallah Goshala		Leather Footwears	1994	290	8	Leather Footwears	30000 Pairs
106	O.K. Shoes Company Mamukanjan Road, Kamalia		Leather Footwears	1990	210	5	Leather Footwears	10000 Pairs
107	Sunny Shoes Bakshi Park Waryam Road	0300-8796705	Leather Footwears	1997	1350	12	Leather Footwears	45000 Pairs
108	Taj Din Shoes Co. Mochiwala Road Gojra		Leather Footwears	1985	1130	22	Leather Footwears	15000 Pairs
109	Usama Enterprises Sammundri Road Gojra	3510749	Leather Footwears	2003	12500	40	Leather Footwears	120000 Pairs
110	V.I.P Shoes Factory, Zia Colony Toba Tek Singh	0333-6871189	Leather Footwears	2008	280	8	Leather Footwears	30000 Pairs
111	Yawar Saleem Mandar Block Gali No.1 Pir Mahal		Leather Footwears	1986	360	20	Leather Footwears	90000 Pairs
112	Al-Madina Marble Factory, Jhona Shah Road, Kamalia	-	Marble Industry	2009	700	3	Marble Products	3500 M.Tons
113	Bismillah Marble Factory	0321-9151802	Marble Industry	2007	800	2	Marble Products	3500 M.Tons

Sr. No.	Name / Address of unit	Phone No. / Website	Industry	Estb. Year	Investment (Th.Rs.)	Emp	Product	Annual Installed Capacity
114	Danish Marble Factory, Ghousia Chowk, Pirmahal	0300-6569550	Marble Industry	2004	710	3	Marble Products	4000 M.Tons
115	Hafiz Marble Factory, Pensare Road, Katcha, Gojra	517355	Marble Industry	2002	720	3	Marble Products	4000 M.Tons
116	Itefaq Marbel Factory, Jhang Road, Gojra	0334-7968466	Marble Industry	2004	720	3	Marble Products	4000 M.Tons
117	Javed Marble Factory, Chak No. 319 Toba Tek Singh	0300-6567956	Marble Industry	1996	700	3	Marble Products	3500 M.Tons
118	Kashmir Marble Factory, Chak No. 319 Toba Tek Singh	0300-6566748	Marble Industry	2008	725	3	Marble Products	3800 M.Tons
119	Muhammad Amin Marble Factory, Chak No. 319	3366244	Marble Industry	2005	800	2	Marble Products	3500 M.Tons
120	Shah Marble Factory, Rajana Road, Kamalia	0333-6887463	Marble Industry	2010	800	2	Marble Products	3500 M.Tons
121	Cornation Feed Industries (Pvt) Ltd. Samundri Road Gojra	510451	Poultry Feed	1989	1500	C	Poultry Feed	12000 M.Tons
122	Data Feed Industries Near Octori Post Rajana Road Kamalia	3411817	Poultry Feed	1987	7600	10	Poultry Feed	7000 M.Tons
123	Gojra Feed Industries Mungi Road Gojra	3511901-2	Poultry Feed	1992	1800	4	Poultry Feed	12000 M.Tons

Sr. No.	Name / Address of unit	Phone No. / Website	Industry	Estb. Year	Investment (Th.Rs.)	Emp	Product	Annual Installed Capacity
124	Insaf Feed Mills, Near Mian Hospital, GBS, Rajana Road, Kamalia	3411289	Poultry Feed	1983	3500	5	Poultry Feed	2000 M.Tons
125	Ittifaq Feeds Industries Rajana Road, Kamalia	3412451	Poultry Feed	1989	1250	5	Poultry Feed	12500 M.Tons
126	J.B.Complex Poultry Feed Mills Al-Rai Medicos 88 More Pir Mahal Kamalia	3411887	Poultry Feed	1975	1200	14	Poultry Feed	12000 M.Tons
127	Kamalia Feed Industries Rajana Road Kamalia	3412484	Poultry Feed	1986	2510	4	Poultry Feed	12000 M.Tons
128	Milat Feed, Kamalia Road, Rajana	3411681	Poultry Feed	2008	10000	10	Poultry Feed	5000 M.Tons
129	Muhammad Ashraf Poultry Feed Mongi Road Gojra		Poultry Feed	1994	575	3	Poultry Feed	2000 M.Tons
130	New Kamalia Feed Mills Rajana Road Kamalia	3413189, 3412441	Poultry Feed	1999	8000	15	Poultry Feed	20000 M.Tons
131	Rustam Feed Industries Mamukanjan Road Kamalia	3414377, 3415270	Poultry Feed	1999	12050	15	Poultry Feed	15000 M.Tons
132	Sardar Feed Industries Rajana Road Kamalia	3411940, 3411362	Poultry Feed	1979	2300	5	Poultry Feed	12500 M.Tons
133	Super Feed Industries Rajana Road Kamalia	3416348, 3414148	Poultry Feed	2004	10060	10	Poultry Feed	6000 M.Tons
134	Faisal Energy Plant Nia Lahore Gojra	560324, 560326	Power Generation	1997	12500	20	Electricity	2.300 Mw

Sr. No.	Name / Address of unit	Phone No. / Website	Industry	Estb. Year	Investment (Th.Rs.)	Emp	Product	Annual Installed Capacity
135	Ahmad Rice Mills, Chichawatni Road, Kamalia	3412327	Rice Mills	1988	5110	22	Rice	2 Shellers
136	Ali Rice Factory, By-Pass Pirmahal	3367351	Rice Mills	2009	20	6	Rice	1 Sheller
137	Al-Karim Fazal Rice Mills, By-Pass Opposite Mehrban Town, Pirmahal	0345-7550668	Rice Mills	2009	120	3	Rice	1 Sheller
138	Amman Rice Mills Near P.S. Arooti Kamalia	3523268	Rice Mills	2003	2500	15	Rice	1 Sheller
139	Bismillah Rice Mills Sindhlianwali Road, Pirmahal	0302-7283375	Rice Mills	2009	120	3	Rice	1 Sheller
140	Faisal Abbas Rice Mills Pir Mahal Road Kamalia	2000696	Rice Mills	2005	5500	20	Rice	1 Sheller
141	Hafiz Rice Mills Sandhlianwali Road Kamalia	3412088	Rice Mills	1980	5000	23	Rice	1 Sheller
142	Imran Rice Mills, Chak No.708/Jgb, Sindhlianwali Road, Kamalia	3415082	Rice Mills	1986	8750	20	Rice	1 Sheller
143	Madina Rice Mills Rajana Road Kamalia	3411183	Rice Mills	1980	1860	21	Rice	1 Sheller
144	Mah-Noor Rice Mills, Rajana Road, Pirmahal	0300-6572484	Rice Mills	2009	150	3	Rice	1 Sheller



Sr. No.	Name / Address of unit	Phone No. / Website	Industry	Estb. Year	Investment (Th.Rs.)	Emp	Product	Annual Installed Capacity
145	Muhammad Iqbal Rice Mills Chak No.720/Gb Kamalia Road Sindhlianwali		Rice Mills	1990	20	5	Rice	1 Huller
146	Muhammad Rafique Rice Mills Chak No.671/12 Bhushi Road Pirmahal		Rice Mills	1990	120	3	Rice	1 Huller
147	Mushtaq Ahmad Rice Mills Kamalia Road Sindhlianwali		Rice Mills	1990	20	1	Rice	1 Huller
148	Saleem Rice Mills, Rajana Road, Kamalia	3411937	Rice Mills	1980	6400	23	Rice	4 Huller
149	Taj Rice Mills, Chak 713/Gb	0300-7289453	Rice Mills	2009	120	3	Rice	1 Sheller
150	Yaqoob Rice Mills Chichawatni Road Kamalia	3415800	Rice Mills	1985	12200	18	Rice	1 Sheller
151	Zain Rice Factory Maal Mandi Road, Kamalia	3411835	Rice Mills	1994	1500	12	Rice	1 Sheller
152	Ali Sizing Industry Jhang Road	2414891	Sizing Of Yarn	2002	4250	18	Sizing Of Yarn	600 M.Tons
153	Amir Sizing Industries Sammundri Road Gojra	3511866	Sizing Of Yarn	1994	1150	15	Sizing Of Yarn	450 M.Tons
154	Frass Sizing Industries Mongi Rd Gojra	3512946	Sizing Of Yarn	2000	1600	12	Sizing Of Yarn	500 M.Tons
155	Gohar Sizing Industries, Moongi Road, Gojra	3510391, 3510491	Sizing Of Yarn	2004	4500	15	Sizing Of Yarn	500 M.Tons

Sr. No.	Name / Address of unit	Phone No. / Website	Industry	Estb. Year	Investment (Th.Rs.)	Emp	Product	Annual Installed Capacity
156	Kamalia Sizing Industries Moh. Paghlanwala Kamalia	3411220	Sizing Of Yam	1977	1200	16	Sizing Of Yam	500 M.Tons
157	Lasani Sizing Industries Samundri Road Gojra	3511348	Sizing Of Yam	1994	1550	10	Sizing Of Yam	500 M.Tons
158	Macca Sizing Industries Jhona Shah Road Kamalia	3413844, 3012544	Sizing Of Yam	2000	3500	12	Sizing Of Yam	450 M.Tons.
159	Madina Sizing Industries Shorkot Road	2510489	Sizing Of Yam	1987	1160	14	Sizing Of Yam	600 M.Tons
160	Mashallah Sizing Industries Toba Road Kamalia	0301-7283936	Sizing Of Yam	2005	5400	16	Sizing Of Yam	500 M.Tons
161	Pakistan Sizing Inds Jhang Road Gojra	3512021	Sizing Of Yam	1996	1800	23	Sizing Of Yam	900 M.Tons
162	Punjab Sizing Industries Samundri Road Gojra	3515142, 3512441	Sizing Of Yam	1987	1200	14	Sizing Of Yam	500 M.Tons
163	Irshad Soap Factory, Shorkot Road		Soap & Detergent	1995	950	4	Soap	100 Tons
164	Chaudhary Sugar Mills Ltd. 11 Km. Pensara Road Gojra	3548233-5	Sugar	1991	1023937	1000	Sugar	8000 Tcd
165	Kamalia Sugar Mills Ltd. Adda Kot Khatran, Kamalia	046-2510884, 2511784	Sugar	1976	954244	649	Sugar	12000 Tcd
166	Accord Textiles Ltd. Rajana Pir Mahal Road Kamalia	3411777	Textile Spinning	1992	395100	497	Cotton Yam	18816 Spindles

Sr. No.	Name / Address of unit	Phone No. / Website	Industry	Estb. Year	Investment (Th.Rs.)	Emp	Product	Annual Installed Capacity
167	Chenab Ltd., (Spinning Unit) 5 Km Shorkot Road	2511374, Wwww.Chenabgroup.Com	Textile Spinning	1989	364670	588	Cotton Yarn	19200 Spindles
168	Mukhtar Spinning Mills Ltd. Nia Lahore Gojra	560329-30, Wwww.Mukhartextile.Com	Textile Spinning	1992	184097	290	Cotton Yarn	14200 Spindles
169	Nomi Spinning Mills Jhang Road Nia Lahore Gojra	560388	Textile Spinning	1990	48100	44	Cotton Yarn	680 Rotors
170	Sahrish Textile Mills Ltd. Nia Lahore, Gojra	560763	Textile Spinning	1992	192000	270	Cotton Yarn	13680 Spindles
171	Naveed Vermicillies, Gojra Road Toba Tek Singh	0307-8417566	Vermicillies	1992	860	10	Vermicillies	450 M.Tons.
172	Waqas (Madina) Vermicillies Factory, Jhang Road	511967	Vermicillies	2001	1500	12	Vermicillies	900 M.Tons
173	Younis Vermicillies Factory, Waryam Road Toba Tek Singh	0342-5490700	Vermicillies	2005	1500	5	Vermicillies	500 M.Tons

Source: Directorate of Industries, Punjab

## LIST OF CONTACT NUMBERS

### *Directorate of Industries Punjab*

Director Industries, Punjab	Tel: +92 (42)-99211520-1 Fax: +92 (42)-99211522 dipunjab@gmail.com
Additional Director Industries	Tel: +92 (42)-99211531 +92 (42)-99212752 Fax: +92 (42)-99212753
Joint Director (Development)	Tel: +92 (42)-99211526
Senior Economist	Tel: +92 (42)-99211533
Staff Economist	Tel: +92 (42)-99211534
Deputy Director (Admin)	Tel: +92 (42)-99211528
Deputy Director (Development)	Tel: +92 (42)-99211528
Deputy Director (Planning)	Tel: +92 (42)-99211530
Assistant Director (Admin)	Tel: +92 (42)-99211529
Assistant Director (Planning)	Tel: +92 (42)-99211530
Assistant Director (Statistics)	Tel: +92 (42)-99211524
Assistant Registrar	Tel: +92 (42)-99211523
Librarian	Tel: +92 (42)-99213010
District Officer (E&IP), TT Singh	Tel: +92 (462)-516461

### *Other Relevant Departments*

Department	Contact
Secretary, Industries, Commerce & Investment Department, Govt. of the Punjab	Tel: +92 (42) 99210534-5 Fax: +92 (42) 99210536
Punjab Board of Investment & Trade (PBIT)	Tel: +92 (42) 99205201 info@pbit.gop.pk
Small & Medium Enterprises Development Authority (SMEDA)	Tel: +92(42)-111-111-456 Fax: +92 (42) 36304926-7 info@smeda.org.pk
Punjab Industrial Estates Development and Management Company (PIEDMC)	Tel: +92 (42) 35297203-6 Fax: +92 (42) 35297207 info@pie.com.pk
Punjab Small Industries Corporation (PSIC)	Tel: +92 (42) 99200453



## BIBLIOGRAPHY

- Punjab Development Statistics 2011, Bureau of Statistics, Government of the Punjab
- The Urban Unit, Planning & Development Department, Government of the Punjab.
- Technical Education and Vocational Training Authority
- Chief Inspector of Boilers, Directorate of Industries, Punjab
- Directorate of Agriculture, Crop Reporting Service, Punjab
- Chief Conservator of Forest Planning, Monitoring and Evaluation, Punjab
- Directorate General (Ext), Livestock & Dairy Development Punjab
- Directorate General Mines & Minerals, Punjab
- Punjab Small Industries Corporation
- Punjab Industrial Estates Development and Management Company
- Faisalabad Industrial Estates Development and Management Company
- Industries, Commerce & Investment Department, Government of the Punjab
- District Officers (Enterprise & Investment Promotion) as well as District Administration
- Export Processing Zones Authority
- Board of Investment, Government of Pakistan
- Website of Stat Bank of Pakistan
- Ministry of Commerce, Govt. of Pakistan.
- Directory of Industrial Establishments Punjab, Directorate of Industries, Punjab

