

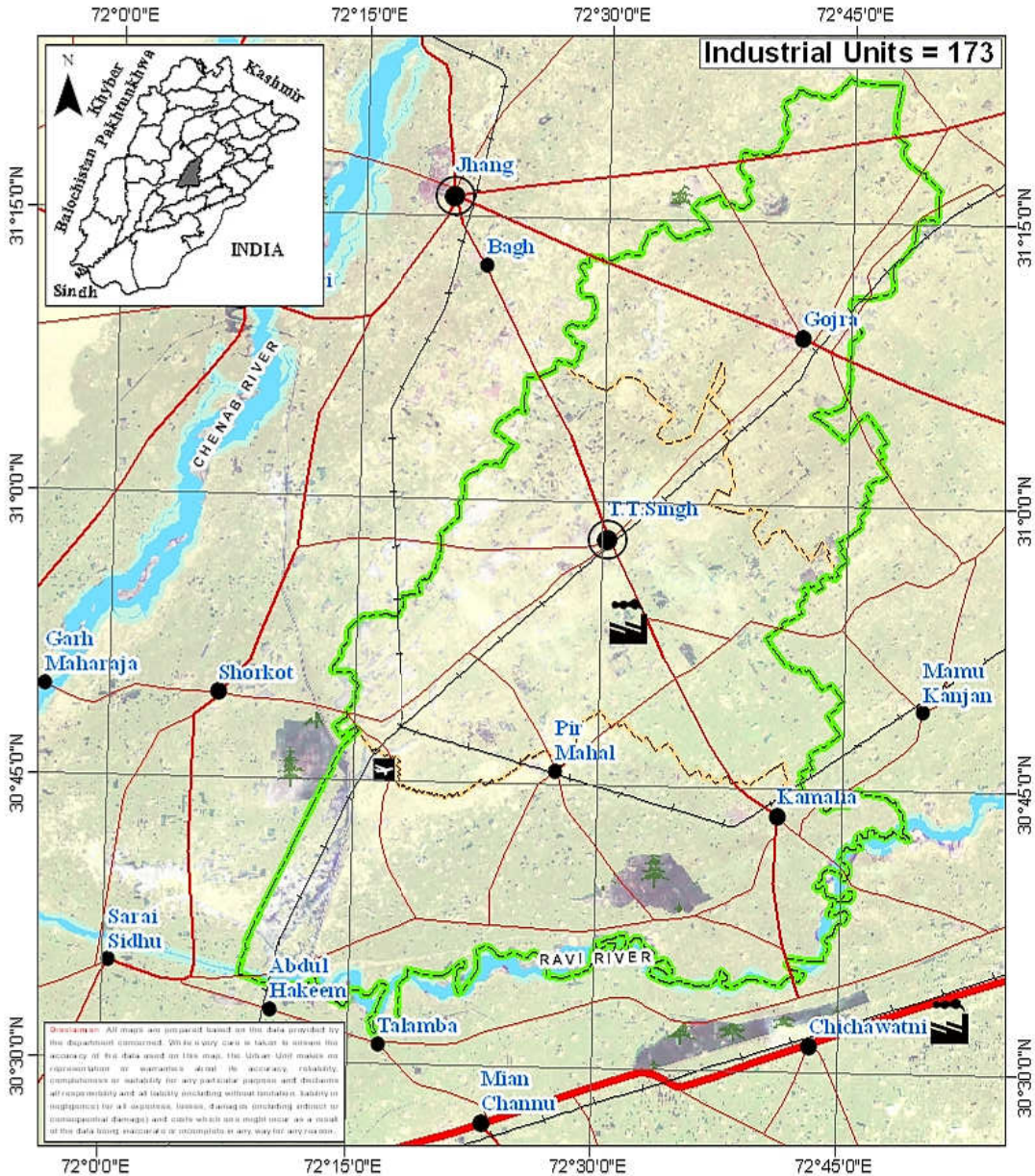
District Pre-Investment Study - 2012

Toba Tek Singh



Directorate of Industries, Punjab
Poonch House, Multan Road, Lahore.

District Toba Tek Singh



Map No.: TTS-01 Date: 21-01-2013

Scale: 1:1,000,000

0 12.5 25

Kilometers



THE URBAN UNIT

Urban Unit, Punjab & Rajasthan, India



Legend

Administrative:

- Provincial Boundary
- District Boundary
- Tehsil Boundary
- Divisional Headquarter
- District Headquarter
- Tehsil Headquarter

Transportation:

- Motorway
- Provincial Highway
- Primary Road
- Intercity Road
- Pakistan Railway
- Airport

Landuse:

- River
- Agricultural Land
- Forest
- Industrial Estate

Director's Message

After spending past two years in Directorate of Industries, Punjab, I feel very privileged to be writing this message as Director Industries, Punjab.



This is the time we publish the 7th edition of the District Pre-Investment Studies of 36 Districts of Punjab, which has now become synonymous with our commitment to helping Industrialists, new entrepreneurs as well as Researchers. As Director Industries Punjab, I have seen much change, like:

- Relocation plan for the industrial units located within residential areas to industrial estates / positive areas declared by the District Governments.
- Adaptation of Boilers & Pressure Vessels Ordinance 2002.
- Conduct of Census of Manufacturing Industries.
- A scheme "Improvement and Up-gradation of Boilers Inspection Wing" has been approved by the Planning & Development Department, Government of the Punjab with the cost of Rs.10 Million.
- A Scheme "Sports Goods and Material Testing Laboratory" is under process in Planning & Development Department, Government of the Punjab. The estimated cost of the scheme is Rs.450 Million.
- The proposal for Capacity Building of Directorate of Industries Punjab is under process in Industries, Commerce & Investment Department, Government of the Punjab with the estimated cost of Rs.109.75 Million.
- We launch our website www.doi.pitb.gov.pk.

Looking ahead, we are focused on accelerating the execution of growth and promote industrial investment in the province. I am incredibly excited about this and truly believe the best of time for industrial investment is yet to come, Insha Allah.

(Muhammad Siddique Sheikh)
Director Industries, Punjab

Preface

Pre-investment studies for the districts in the Punjab were first published by the Directorate of Industries and Mineral Development, Punjab in the year 1979, with the prime objective of providing data which might interest private entrepreneurs and the framers of the Provincial and National Strategies in the industrial sector.

The second, third, fourth, fifth and sixth series of Pre-investment Studies for all districts of Punjab were published in 1983, 1992, 2002, 2006 and 2009 respectively. The present edition is seventh in the series.

This study basically updates the information contained in sixth series of district pre-investment studies. Efforts have been made to provide latest information collected through published sources, offices of the respective Government Departments/Agencies and District Offices of Industries Department. Quality addition of Industrial Policy Framework, recently promulgated Special Economic Zone Act 2012, Strategic Trade Policy Framework (2012-15) and Digital Maps by Urban Unit has improved these studies significantly.

The information has been updated in respect of population, manpower, production of agriculture crops, fruits, vegetables, livestock, forest resources, ores/minerals, infrastructural facilities such as technical/vocational training facilities, communication net-work, sub-soil water quality/effluent disposal

facilities, power/gas supply, tele-communication facilities, industrial estates, dry ports, industrial financing facilities, loaning scheme of PSIC, industrial policy, investment policy, fiscal incentives, Special Economic Zone Act 2012 and Strategic Trade Policy Framework (2012-15) etc. New policy measures regarding declaration of negative and specified positive areas have also been incorporated.

The study also includes information regarding existing industrial pattern, industry wise installed capacities and details regarding existing major industrial units in each district.

Effort has been made to identify various industries considering the availability of raw materials, skilled labour, linkage between industrial units and local/national/international demand. The suggested industries are, however, merely of indicative nature and it is advisable that prospective investors should conduct detailed feasibility report before making final decision for investment.

It is worthwhile to mention that industrial sector in Punjab has grown gradually from 6,223 industrial units in 1975 to 17,857 industrial undertakings in 2010. Sectoral growth has also been registered, resulting in substantial value addition. Value addition chain can be maximized by processing the agricultural industrial waste like rice husk, cotton stock, maize and corn cob. Herbal products is another untapped area. Live Stock, Dairy Development and poultry are fast growing sectors. Processing of food products can fetch handsome dividends. Currently information technology sector is growing by 39% annually in Pakistan. Fashion

industry is also developing rapidly. Similarly, chemical sector has lot to offer by utilizing the available mineral resources as raw material.

Issue of energy shortage can be addressed by dealing with power generation as an industry. Local as well as foreign investors have golden opportunity to set up power generation stations based on coal and other alternate fuels, under the captive power plants policy allowed in the newly promulgated SEZ Act, 2012. Punjab offers very good opportunity to the local as well as foreign investors to set up small, medium and heavy industries in variety of sectors. It has a growing market of over 90 million consumers, abundant manpower / labour force and cheap raw material with reasonably controlled law & order.

The Industries, Commerce & Investment Department has sufficient institutional frame work of attached and autonomous bodies to look after the industrial issues. Directorate of Industries, Small Industries Corporation (PSIC), Board of Investment (PBIT), Punjab Industrial Estates Development and Management Company (PIEDMC), Faisalabad Industrial Estates Development and Management Company (FIEDMC) have blend of professionals from the public as well as private sector. These legal entities are working in close coordination with the Chambers of Commerce and Industries systematically to promote industrialization and trade.

Development schemes regarding establishment of Industrial Resource Centre at the Directorate of Industries, setting up Sports & Material Testing Lab at EPZ, Sambrial and Industrial Safety Institute are under consideration with the Planning and Development

Department. Completion of these schemes will definitely help in promotion of industrialization process with enhanced industrial safety.

I must record my appreciation to Mr. Muhammad Akram Awan, Senior Economist, who effectively planned, coordinated and provided the guidance to his team members for completion of this study. Credit also goes to Mr. Muhammad Jamil Chishty, Staff Economist for his dedicated support rendered in the completion process of this study and Mr. Waseem Haider, Stenographer, for his tireless typing and composition work on computer.

I am grateful to all the District Officers, Enterprise & Investment Promotion who provided the relevant information of their respective districts for incorporating in pre-investment studies. I am also thankful to various Provincial Departments for supplying the required data to the Directorate of Industries. My special thanks are due to Dr. Nasir Javed, Project Director, Urban Unit for the provision of digital maps and the Punjab Printing Press.

Any suggestion for the improvement of the study will be welcomed.

Dec. 31, 2012

(Muhammad Siddique Sheikh)
Director Industries, Punjab

Contents

| Section | Page |
|---|-----------|
| District at a Glance | 1 |
| 1. Geographical Conditions | 3 |
| 1.1 Brief Description of the District | 3 |
| 1.2 Climate and General Soil Conditions | 3 |
| 2. Man-Power | 5 |
| 2.1 Total Population of the District | 5 |
| 2.2 Man-Power Availability | 6 |
| 2.3 Traditional Crafts | 9 |
| 2.4 Geographical Indications | 9 |
| 3. Natural Resources | 11 |
| 3.1 Agriculture | 11 |
| a) Main Crops | 11 |
| b) Main Fruits | 12 |
| c) Main Vegetables | 12 |
| 3.2 Forests | 13 |
| a) Location of Forests and Area under Afforestation | 13 |
| b) Production of Timber and Fire-wood | 14 |
| 3.3 Livestock Population | 14 |
| a) Animal Population | 14 |
| b) Poultry Population | 15 |
| c) Availability of Hides/Skins & Slaughter House Wastes | 15 |
| d) Production of Wool | 15 |
| 3.4 Ores and Minerals | 16 |

| | |
|--|-----------|
| 4. Infrastructural Facilities | 17 |
| 4.1 Communication Network | 17 |
| a) Road Links | 17 |
| b) Rail Links | 17 |
| 4.2 General Quality and Availability of Sub Soil Water | 17 |
| 4.3 Effluent Disposal Facilities | 17 |
| 4.4 Power Supply | 18 |
| 4.5 Natural Gas Availability | 18 |
| 4.6 Telecommunication Facilities | 18 |
| 4.7 Social Infrastructural Facilities | 18 |
| 4.8 Industrial Estates | 19 |
| 4.9 Dry Port | 19 |
| 4.10 Industrial Policy | 19 |
| 4.11 Declaration of Negative Areas | 24 |
| 4.12 Declaration of Positive Areas | 25 |
| 4.13 Incentives for Investors to set a unit in EPZs | 26 |
| 4.14 Pakistan's Investment Policy – Key Features | 29 |
| 4.15 Industrial Financing Facilities | 31 |
| 4.16 Salient Features of Loaning Scheme of PSIC | 34 |
| 4.17 Salient Features of the SEZ Bill 2012 | 36 |
| 4.18 Strategic Trade Policy Frame Work (2012-2015) | 37 |
| 5. Existing Pattern of Industrial Development | 43 |
| 5.1 Description of Existing Industry | 43 |
| 6. Future Industrial Potential | 45 |
| 6.1 Agriculture | 45 |
| 6.2 Livestock | 46 |
| 6.3 Industry | 47 |
| 6.4 Demand Based Industries | 47 |
| 6.5 List of Identified Projects | 47 |

| Annex | Page |
|--|-------------|
| Directory of Industrial Establishment | 49 |
| List of Contact Nos. | 67 |
| Bibliography | 69 |

DISTRICT AT A GLANCE

| | | |
|----|--|--|
| 1 | Population (000 Numbers) | : 1,993 |
| 2 | Area (Square Kilometres) | : 3,252 |
| 3 | Population Density (per sq. km.) | : 613 |
| 4 | Tehsils / Towns | : Toba Tek Singh, Gojra and Kamalia. |
| 5 | Main Crops | : Sugarcane, Wheat, Cotton, Maize, Rice, Moong, Masoor and Mash. |
| 6 | Main Fruits | : Citrus, Guava and Mango. |
| 7 | Main Vegetables | : Potato, Onion, Cauliflower and Ladyfinger. |
| 8 | Forest Resources (Area in Acres) | : 11,581 |
| 9 | Mineral Resources | : Nil |
| 10 | Total Metalled Roads (KM) | : 1,947.48 |
| 11 | No. of Grid Stations | : 12 |
| 12 | No. of Telephone Exchanges | : 35 |
| 13 | Number of Industrial Units (Large Medium and Some Small Selected Sectors) | : 173 |

- 14 Type of Industrial Units : Agricultural Implements, Bicycle Parts, Cement Products, Chip/Straw Board, Cold Storage, Cotton Ginning & Pressing, Confectionery, Drugs & Pharmaceutical, Flour Mills, Leather Footwear, Marble, Poultry Feed, Power Generation, Rice Mills, Sizing of Yarn, Soap / Detergent, Sugar, Textile Spinning and Vermicelli's

CHAPTER - I

GEOGRAPHICAL CONDITIONS

1.1 BRIEF DESCRIPTION OF THE DISTRICT

District Toba Tek Singh adjoins the district Faisalabad on the East. On the West and North, its boundary touches Jhang district. Its South and South-Eastern side is bounded by river Ravi across which lies districts of Khanewal and Sahiwal.

District Toba Tek Singh is spread over an area of 3252 square kilometres comprising of following three tehsils.

- i) Toba Tek Singh
- ii) Gojra
- iii) Kamalia

1.2 CLIMATE AND GENERAL SOIL CONDITIONS

District Toba Tek Singh has extreme hot and cold climate. The land mainly comprises plains with river Ravi flowing on South Eastern side of the district. Most of the area of tehsil Kamalia is low lying and gets flooded during rainy season. The soil is fertile.

CHAPTER - II

MAN POWER

2.1 TOTAL POPULATION OF THE DISTRICT

According to Punjab Development Statistics 2011, total population of Toba Tek Singh district is 1,993 thousand persons out of which 1016 thousand are males and 977 thousand are females. Density of population in the district is 613 persons per square kilometre.

Tehsil wise distribution of Urban and Rural population is given in Table-1

TABLE-1

Town-Wise Distribution of Urban & Rural Population

| Town | Population (Thousand Nos.) | | |
|----------------|----------------------------|-------------|-------------|
| | Urban | Rural | Total |
| Toba Tek Singh | 74 | 682 | 756 |
| Gojra | 145 | 454 | 599 |
| Kamalia | 157 | 481 | 638 |
| Total | 376 | 1617 | 1993 |

Source: Punjab Development Statistics, 2011

2.2 MAN POWER AVAILABILITY

As regards availability of skilled labour, there are 11 technical / commercial / vocational institutions (8 for men and for 3 women) imparting training in various trades e.g. mechanical, electrical, auto-engineering, welding, wood working and commerce. Vocational institutions for women impart training in hand/machine embroidery, stitching and knitting. In all about 3363 technicians/artisans/workers are trained every year. The details are given in Table-2.

TABLE - 2

Commercial and Technical Institutions

| Sr # | Name & Description of Commercial / Technical Training Institutions | Types of Training Courses Offered | Duration of Course | Average No of Students Enrolled / Session |
|----------------|--|-----------------------------------|--------------------|---|
| For Men | | | | |
| 1 | Govt. Institute of Commerce, Near Chak No.711/JB, Kamalia | D.Com, B.Com (Degree) | 24 Months | 521 |
| 2 | Govt. College of Commerce, Gufar Park, Painsara Road, Gojra | D.Com, B.Com (Degree), | 24 Months | 456 |

| | | | | |
|---|--|--|----------------|-----|
| 3 | Govt. College of Commerce, Rajana Road, TT Singh | B.Com (Degree), D.Com | 24 Months | 560 |
| 4 | Govt. Technical Training Institute, Kamalia | G-II (Ref. & AC, Auto & Farm, Electrician, Machinist), HV & AC, Electrical Wiring Technician | 6 to 24 Months | 394 |
| 5 | Govt. Technical Training Centre (DMTC), Opposite Tehsil Office, Gojra | Electrician, Welder, Wood Work, Auto Mechanic, Turner, Wireman | 6 Months | 87 |
| 6 | Govt. Technical Training Centre, (DMTC) Ghausia Chowk, Pir Mahal | Auto Mechanic, Electrician, Welder, Turner, Wireman | 6 Months | 75 |
| 7 | Govt. Technical Training Institute, T.T.Singh | Auto Mechanic, Electrician, Industrial Electronics, Mechanist, HV & AC, Electrical wiring technician | 6 to 24 Months | 394 |

| | | | | |
|------------------|--|--|----------------|-----|
| 8 | Govt. College of Technology, Kamalia. | Sugar Technology, DAE, Computer Information, Microsoft IT Academy, Technology, Textile Weaving Tech. | 3 to 36 Months | 352 |
| For Women | | | | |
| 9 | Govt. Vocational Training Institute, Akalwal Road, TT Singh | Beautician, Domestic Tailoring, Certificate in Computer Application, Vocational Certificate, Vocational Diploma | 3 to 24 Months | 197 |
| 10 | Govt. Vocational Training Institute, Near City Police Station, Kamalia | Vocational Certificate, Vocational Diploma, Beautician, Domestic Tailoring, Certificate in Computer Applications | 3 to 24 Months | 103 |

| | | | | |
|----|---|--|----------------|-----|
| 11 | Govt. Vocational Training Institute, Ghafar Park, Painsara Road, Gojra. | Vocational Certificate / Diploma, Beautician, Domestic Tailoring, Certificate in Computer Applications | 3 to 24 Months | 224 |
|----|---|--|----------------|-----|

Source: TEVTA

2.3 TRADITIONAL CRAFTS

Khaddar weaving is traditional craft of the district. It is popular due to its finish and feel.

2.4 GEOGRAPHICAL INDICATIONS

The Project Director (Geographical Indications), Industries, Commerce & Investment Department, Government of the Punjab has identified the following Important Geographical Indications in the district:

- Kamaliya Lungi
- Peer Mehal (Chappals)
- Kamaliya Khadar (Cloth)
- Captain Box
- Dari (Rug)
- Potato
- Sugarcane
- Maize
- Kinnow (Orange)

CHAPTER - III

NATURAL RESOURCES

3.1 AGRICULTURE

a) Main Crops

Sugarcane, Wheat, Cotton Maize, Rice, Moong, Masoor and Mash are the main crops grown in the district. Production of these crops during the period 2008-09 to 2010-11 is given in Table - 3.

TABLE-3

**Production of Main Crops
(2008-09 to 2010-11)**

| Crop | Production (Th. M.Tons) | | |
|-----------------------|-------------------------|---------|---------|
| | 2008-09 | 2009-10 | 2010-11 |
| Sugarcane | 1881.38 | 1826.20 | 2421.99 |
| Wheat | 490.36 | 460.22 | 538.78 |
| Cotton (000 Bales) | 165.19 | 143.11 | 112.13 |
| Maize | 97.8 | 101 | 115.5 |
| Rice | 59.49 | 66.11 | 62.18 |
| Moong | 320 | 345 | 381 |
| Masoor | 60 | 73 | 50 |
| Mash | 20 | 20 | 11 |

Source: Directorate of Agriculture, Crop Reporting Service,
Punjab

Besides, Jawar, Bajra, Gram, Oil Seed such as Rape / Mustard and Sunflower are also grown in minor quantities in the district.

b) Main Fruits

Citrus, Guava and Mango are main fruits grown in the district. Production of these fruits during the period 2008-09 to 2010-11 is given in Table - 4

TABLE-4

**Production of Main Fruits
(2008-09 to 2010-11)**

| Fruit | Production (M.Tons) | | |
|--------|---------------------|---------|---------|
| | 2008-09 | 2009-10 | 2010-11 |
| Citrus | 158960 | 122114 | 167633 |
| Guava | 19631 | 20360 | 33730 |
| Mango | 5701 | 5128 | 7693 |

Source: Directorate of Agriculture, Crop Reporting Service, Punjab

Besides, Pomegranate is also grown in minor quantity in the district.

c) Main Vegetables

Potato, Onion, Cauliflower and Ladyfinger are main vegetables grown in the district. Production of these vegetables during the period 2008-09 to 2010-11 is given in Table - 5

TABLE-5

**Production of Main Vegetables
(2008-09 to 2010-11)**

| Vegetable | Production (M.Tons) | | |
|-------------|---------------------|---------|---------|
| | 2008-09 | 2009-10 | 2010-11 |
| Potato | 61715 | 76052 | 75356 |
| Onion | 5830 | 5008 | 6931 |
| Cauliflower | 7558 | 7637 | 7894 |
| Ladyfinger | 5076 | 5204 | 5016 |

Source: Directorate of Agriculture, Crop Reporting Service, Punjab

Besides, Turnip, Carrot, Peas, Chillies, Tomato and Garlic are also grown in the district in minor quantities.

3.2 FORESTS

a) Location of Forests and Area under Afforestation

An area of 11,581 Acres is under forest, which is about 1.44% of the total area of the district. There is also linear plantation of 629 Km alongside the roads/rails/canals in the district. Trees grown in the area are Kau, Phalai, Kikar and Shisham.

b) Production of Timber and Firewood

The production of Timber and Fire-Wood in the district during the period 2008-09 to 2010-11 is given in Table 6.

TABLE-6

**Production of Timber & Firewood
(2008-09 to 2010-11)**

| Year | Production (Cubic Meter) | |
|---------|--------------------------|----------|
| | Timber | Firewood |
| 2008-09 | 3939 | 756 |
| 2009-10 | 501 | 304 |
| 2010-11 | 1745 | 864 |

Source: Forestry, Wildlife and Fisheries Department

3.3 LIVESTOCK POPULATION

a) Animal Population

The animal population of the district is given in Table - 7.

TABLE - 7

ANIMAL POPULATION

| Animals | Population (Th Heads) |
|-----------|-----------------------|
| Goats | 578 |
| Buffaloes | 510 |
| Cattle | 331 |
| Sheep | 50 |

Source: Livestock & Dairy Development Department.

b) Poultry Population

As per Punjab Development Statistics 2011, there are 852 broiler and 499 layer poultry farms in the district having rearing capacity of 20,793 and 4,736 thousand birds respectively. There are 12 breeding farms having rearing capacity of 175 thousand birds.

c) Availability of Hides / Skins and Slaughter House Wastes

As per Punjab Development Statistics 2011, 1,23,300 animals were slaughtered in recognized / un-recognized slaughter houses in the district during the year 2009-10, which is a fair estimate of the availability of hides and skins in the district.

The availability of slaughter house by - products is estimated as under:-

| | |
|--------|---------------|
| Blood | 45.37 M.Tons |
| Bones | 214.04 M.Tons |
| Tallow | 40.81 M.Tons |

d) Production of Wool

The sheep population of 50 thousand heads in the district is expected to yield about 50 M.Tons of coarse wool annually.

3.4 ORES AND MINERALS

There is no major mineral in the district.

CHAPTER - IV

INFRASTRUCTURAL FACILITIES

4.1 COMMUNICATION NETWORK

a) Road Links

The district has metalled road-length of 1947.48 Kilometres. The district is linked with Faisalabad, Jhang and Khanewal districts through metalled roads.

b) Rail Links

The district is linked with Faisalabad and Khanewal through railway network.

4.2 GENERAL QUALITY AND AVAILABILITY OF SUB-SOIL WATER

The sub soil water in the district is generally brackish. Good quality sweet water is, however, available along the banks of rivers and canals.

4.3 EFFLUENT DISPOSAL FACILITIES

The location of existing nullah in the district is suitable for effluent disposal. However, permission

from Irrigation and Power Department, Government of the Punjab, is necessary for discharge of effluent in the nullah.

4.4 POWER SUPPLY

There are 12 grid stations in the district (ranging in capacity from 66 KV to 132 KV).

4.5 NATURAL GAS AVAILABILITY

Natural gas is available in Toba Tek Singh, Kamalia and Gojra Tehsils.

4.6 TELE-COMMUNICATION FACILITIES

There are 35 telephone exchanges operating in the district (ranging in capacity from 50 lines to 4,500 lines). Cellular phone services are available in the district.

4.7 SOCIAL INFRA-STRUCTURAL FACILITIES

Social infra-structural facilities available in the district are given in Table - 8.

TABLE - 8**SOCIAL INFRA-STRUCTURAL FACILITIES**

| Tehsil | Primary / Middle / high / higher secondary School | College | Hospital | Police station | Railway stations | Post office | Banks |
|----------|---|---------|----------|----------------|------------------|-------------|-------|
| TT Singh | 316 | 4 | 1 | 4 | 4 | 112 | 17 |
| Gojra | 222 | 3 | 1 | 3 | 3 | 75 | 10 |
| Kamalia | 254 | 3 | 1 | 4 | 5 | 72 | 9 |
| Total | 792 | 10 | 3 | 11 | 12 | 259 | 36 |

Source: Punjab Development Statistics 2011 / Respective District Offices.

4.8 INDUSTRIAL ESTATE

At present, there is no industrial estate in the district.

4.9 DRY PORT

There is no dry port in the district.

4.10 INDUSTRIAL POLICY

- Foreign investors are permitted to hold 100% of the equity of industrial projects without any permission of the Government.
- No prior Government sanction is required for establishment of an industry outside Ex-Municipal Territorial Limits of Town

Committees / Municipal Corporation irrespective of its cost and size except the following covered under schedule 'C':-

- a. Arms & Ammunition.
 - b. Security Printing Currency & Mint.
 - c. High Explosives.
 - d. Radio Active Substances.
 - e. Alcoholic Beverages or Liquors.
1. No industrial unit mentioned in Schedule-A of the notification No. AEA-III-4-3-9/91, dated 30.09.2002 or industrial unit exceeding a total cost of Rs. 100.00 million shall be set up within 10 miles (16 Kms) of international border:

List of Manufacturing Industries

- a) Basic Metal Industry.
- b) Petro-Chemical Industries (Excluding Products Industries).
- c) Large size Machine Tool Factories (Limit of Investment to be determined).
- d) Heavy Foundry Works.
- e) Heavy Electric Complexes.
- f) Heavy Mechanical Complexes.
- g) Electronics Industries.
- h) Major Vehicle Assembly Plants.
- i) Ordnance Factories.
- j) Explosives, Nitric acid and Sulphuric acid plants.
- k) Vehicular Tires and Tubes Industries.

- l) Locomotives and Railway Carriage manufacturing plants.
 - m) Government Mint.
 - n) Security Printing Press involved in whole time printing of sensitive documents / currency notes.
 - o) Manufacture of optical glass and optics.
 - p) Nickle cadmium battery industries.
 - q) Nuclear / Separation Plants.
 - r) Large Power Generating Stations.
 - s) Large oil Storage units.
 - t) Oil refineries.
2. No industrial unit shall be set up in areas affected by flood flowing transversely in the strip of one mile of either side across the Grand Trunk Road from Shahdara Town to Muridke Town, without prior permission of the Provincial Government.
3. According to the notification No. AEA-III-3-5/2003 (Vol-III), dated 06.12.2006, “no new sugar mill shall be setup and no enlargement in capacity of the existing sugar mills is allowed in the Province”.
4. Each district Government may declare “negative area” for industry. Such “negative area” be determined by a District Committee after consultation with all stake-holders in light of general policy guidelines issued by the Industries, Commerce & Investment

Department and exemptions allowed under Schedule 'B' of this Notification as under:

List of Service Industries

- a) Furniture (excluding Band Saw) and also excluding storing Timber / Wood.
- b) Tailoring/ Readymade garments.
- c) Laundry / Dry Cleaning.
- d) Bakery (excluding confectionery).
- e) Syrups (excluding squashes)
- f) Cosmetics.
- g) Service workshop.
- h) Cereal Products like vermicilles.
- i) Candles making.
- j) Printing and Packaging.
- k) Hand loom carpet weaving.
- l) Hotels.
- m) Bidi manufacturing.
- n) Hand made shoes / shoe repairing workshop.
- o) Spooling and thread balls.
- p) Small Hosiery units employing not more than 10 workers.
- q) Atta Chakkies.
- r) Installation of Chaff cutters.
- s) Cotton Grading.
- t) Other small industrial undertakings which do not fall under the Sixth schedule of the Punjab Local Government Ordinance, 2001.

“Other small industrial undertakings” would mean an industrial undertaking in which the

total fixed assets (including the cost of land) do not exceed Rs.1.0 million (Rupees one million).

5. No industrial unit mentioned in Schedule 'C' of this Notification shall be set up anywhere in the Punjab without prior approval of the Government.
6. The Government reserves the right to refuse establishment / enhancement of any industrial undertaking which is in contravention of the public interest, ecology or any other law / rules for the time being in force.
7. The Government may relax any of the provisions of this notification in case of a particular unit or industry or class of units or industries.
8. NOC from Environment Protection Department, Govt. of the Punjab is required for setting up new Industries.
 - Tourism has been given the status of industry in accordance with Ministry of Industries & Production Circular No. 1-129/99-INV-IV dated 2nd August 1999.
 - The Housing and Construction Sector has also been declared as industry (Finance

Division Notification No. 10(10)/IF-11/98, dated 07.04.1999 and 04.06.1999.

- In accordance with Government notification No. 3(2)/97-INV-IV dated 05.05.1997, Computer Software and Information Technology (IT) have been declared as Industry.

4.11 DECLARATION OF NEGATIVE AREAS

In pursuance of the Clause 4 of the Location Policy notified on 30-09-2002, by the Industries, Commerce & Investment Department, Government of the Punjab, the District Govt. Toba Tek Singh has declared the following negative areas:

- a) No industrial unit mentioned in schedule 'A' & 'B' shall be set up within urban areas.
- b) No industrial unit shall be set up within the villages: if the proposed site of the industrial unit is located as such at unreasonable distance as may cause nuisance to the nearby residential localities.
- c) No industrial unit shall be established in the radius of five kilometre of flood area located in Tehsil Kamalia.
- d) No industrial unit shall be established where proper effluent disposal arrangements are not available at the site

to the satisfaction of the District Government.

4.12 DECLARATION OF SPECIFIED POSITIVE AREAS

Vide the Finance Act, 2008, the Government of Pakistan has enacted a new section “23A” in the Income Tax Ordinance 2001. The Section “23A” is reproduced below:-

“First year allowance.- (1) Plant, Machinery and equipment installed by any industrial undertaking setup in specified rural and under developed areas, and owned and managed by a company shall be allowed first year allowance in lieu of initial allowance under Section 23 at the rate specified in Part II of the third schedule against the cost of the “eligible depreciable assets” put to use after July 1st, 2008.

(2) The provision of Section 23 except sub-sections (1) and (2), thereof, shall mutatis mutandis apply.

The Federal Government may notify “Specified areas” for the purpose of sub-section(1)”

In pursuance of the above mentioned notification District Government TT Singh has identified and approved the following specified positive areas for setting up industrial undertakings:-

| Tehsil | Specified positive Areas |
|----------|---|
| TT Singh | <ul style="list-style-type: none"> • Toba Jhang Road both sides form 5-km to onward. • Rajana Sumandari Road form 10-KM. • Toba Shorkot Road from 6th Km to onward. |
| Gojra | <ul style="list-style-type: none"> • Gojra Toba Road Bye Pass. • Gojra Mongi Road (State land available). • Gojra Dijkot Road. • Gojra Pensara Road. • Gojra Summandri Road. |
| Kamalia | <ul style="list-style-type: none"> • Kamalia Pirmahal Road both sides (state land available). • Pir Mahal Sindhilianwali Road form 3-KM. • Rajana Pir Mahal Road. |

4.13 INCENTIVES FOR INVESTORS TO SETUP A UNIT IN EPZs

- a) According to EPZs Authorities, following incentives are available in the Export Processing Zones

1. 100% ownership rights.
2. 100% repatriation of capital & profits.
3. No minimum or maximum limit for investment.
4. Duty free imports of machinery, equipment & material.
5. No sales tax on input goods including electricity & gas bills.
6. Obsolete/old machinery can be sold in domestic market of Pakistan after payment of applicable duties & taxes.
7. Freedom from National import restrictions.
8. Foreign exchange control regulation of Pakistan not applicable.
9. Defective goods/waste can be sold in domestic market after payment of applicable duties, maximum upto 3% of total value of export.
10. Duty free vehicle allowed under certain conditions. After 5 years of use, vehicles can be disposed off in domestic market on payment of duty on depreciated value.
11. Domestic market of Pakistan available on same conditions as for imports from other countries.
12. Units operating in EPZs can undertake sub-contracting for units of tariff area subject to payment of duty and taxes on value addition only.

13. Only EPZA is authorized to collect Presumptive tax at the time of export of goods which would be final tax liability.
 14. EPZ units allowed to supply goods to Custom manufacturing bonds.
 15. Production oriented labour laws to be solely regulated by the Authority.
 16. EPZ manufacturer will be treated at par with bonded manufacturers in tariff area for any future incentives to be announced for exporters.
 17. Relief from double taxation subject to bilateral agreement.
- b) Facilities to Investors for setting up a unit in EPZs of Pakistan.
1. One window service and simplified procedure.
 2. All infrastructural facilities like water, electricity, gas, telex, fax and telecommunication system are made available by EPZA.
 3. Skilled & un-skilled labour available in abundance.
 4. Sub-contracting without limit on variety and quantity is allowed outside the zone as well as within the zone.
 5. The garment manufacturing units located in Export Processing Zones are eligible to participate in auction of quotas.

6. GSP concessions given by various countries to imports from Pakistan are available to the manufacturers in the zone.
7. Peaceful, secure and environmentally protected / pollution free work area.
8. Inter-unit transfer of finished goods among exporting units allowed.

4.14 PAKISTAN'S INVESTMENT POLICY - KEY FEATURES

General

- The investment policy is liberal and business friendly as it has been designed in consultation with businessmen, investors and representative forums as well as the Multinational Companies (MNCs).
- It provides equal investment opportunities for both domestic and foreign investors.
- All economic sectors open for FDI (Foreign Direct Investment).
- 100% foreign equity allowed.
- No government sanction required.
- Foreign investment on repatriable basis is allowed in all economic sector including manufacturing, agriculture, services, infrastructure and social sectors.
- Foreign investment in Agriculture projects allowed on joint-venture basis by associating minimum local equity of 40%.
- Remittance of Royalty, Technical & Franchise Fee, Capital, Profits, Dividends allowed.

- Minimum foreign equity for non-manufacturing including services sector has been reduced from \$ 0.3 to \$ 0.15 million. In Agriculture, infrastructure and social sectors, it is \$ 0.3 million.

Tariff and Tax Incentives

- To keep Pakistan competitive in international tariff 5% customs duty has been allowed on import of plant and machinery which is not manufactured locally.
- Sales tax 0% across the board.
- 0% duty on import of raw material for export industry.
- 0% duty on import of agriculture machinery.
- Tax relief in shape of Initial Depreciation Allowance (IDA) has been provided as 50% of machinery cost across the board.
- Tax relief has also been provided for expansion and Balancing, Modernization & Replacement (BMR) in existing industries.

Policy Package of Pakistan

| Policy Parameters | Mfg. Sector | Non-Manufacturing Sectors | | |
|-------------------|---|--|-------------------------|--|
| | | Agriculture | Infrastructure & Social | Services including IT & Telecom Services |
| Govt. Permission | Not required except for specified industries* | Not required except specific licences from concerned agencies. | | |

| | | | | |
|---|--|---|------|------|
| Remittance of capital, profits, dividends, etc. | Allowed | Allowed | | |
| Upper Limit of foreign equity allowed | 100% | 100% | 100% | 100% |
| Minimum Investment Amount (M \$) | No | 0.3 | 0.3 | 0.15 |
| Customs duty on import of PME** | 5% | 0% | 5% | 0-5% |
| Tax relief (IDA***, % of PME cost) | 50% | 50% | | |
| Royalty & Technical Fee | No restriction for payment of royalty & technical fee. | Initial lump-sum up to \$100,000 Max Rate 5% of net sales - Initial period 5 years | | |

* Specified Industries:

- i) Arms and ammunitions
- ii) High Explosives
- iii) Radioactive substances
- iv) Security Printing
- v) Currency and mint

** PME = Plant, Machinery and Equipment

*** IDA = Initial Depreciation Allowance

4.15 INDUSTRIAL FINANCING FACILITIES

Following Financial Institutions in the country are providing various types of fixed investment industrial financing in the foreign and local currency to the industrial sector for establishment

of new industrial units as well as for Expansion, Balancing, Modernization and Replacement (BMR) of existing industrial units within the frame-work of industrial/financial policies of the Government of Pakistan.

- 1 AlBaraka Bank (Pakistan) Limited.
- 2 Allied Bank Limited.
- 3 Askari Bank Limited.
- 4 Bank Alfalah Limited.
- 5 Bank Al-Habib Limited.
- 6 Bank Islami Pakistan Limited.
- 7 Barclays Bank PLC.
- 8 Burj Bank Limited.
- 9 Citi Bank N.A.
- 10 Deutsche Bank A.G.
- 11 Dubai Islamic Bank Pakistan Limited.
- 12 Faysal Bank Limited.
- 13 First Women Bank Limited.
- 14 Habib Bank Limited.
- 15 Habib Metropolitan Bank Limited.
- 16 HSBC Bank Middle East Limited.
- 17 Industrial and Commercial Bank of China
- 18 Industrial Development Bank of Pakistan.
- 19 JS Bank Limited.
- 20 KASB Bank Limited.
- 21 MCB Bank Limited.

- 22 Meezan Bank Limited.
- 23 National Bank of Pakistan.
- 24 NIB Bank Limited.
- 25 Oman International Bank S.A.O.G.
- 26 S.M.E. Bank Limited.
- 27 Samba Bank Limited
- 28 Silk Bank Limited.
- 29 Sindh Bank Limited.
- 30 Soneri Bank Limited.
- 31 Standard Chartered Bank (Pakistan) Limited.
- 32 Summit Bank Limited
- 33 The Bank of Khyber
- 34 The Bank of Punjab
- 35 The Bank of Tokyo-Mitsubishi Limited.
- 36 The Punjab Provincial Cooperative Bank Limited.
- 37 United Bank Limited.
- 38 Zarai Taraqiati Bank Limited.

Source: State Bank of Pakistan

List of Development Financial Institutions (DFIs)

- 1 Bankers Equity Limited.
- 2 House Building Finance Company Limited.
- 3 Pak Brunei Investment Company Limited
- 4 Pak-China Investment Company Limited.

- 5 Pak Oman Investment Company Limited.
- 6 PAIR Investment Company Limited.
- 7 Pakistan Kuwait Investment Co. Ltd.
- 8 Pak-Libya Holding Company Limited.
- 9 Saudi Pak Industrial & Agricultural Investment Company Limited.

Source: State Bank of Pakistan

Besides the financial institutions mentioned above a number of Leasing Companies, Modaraba Companies, Investment Banks are also providing financing facilities to the industrial sector. Punjab Small Industries Corporation also extends financial assistance to the small/cottage industrial units.

4.16 SALIENT FEATURES OF LOANING SCHEME OF PSIC

Punjab Small Industries Corporation (PSIC) is a body corporate enacted in 1973. One of core functions of PSIC is financial assistance programme for prospective entrepreneurs, skilled youth, artisans and craftsmen all over the Punjab. The priority sectors are as under:

- Service Industries.
- Agro / Agro Support Industries.
- Food Processing Industries.
- Export Oriented Industries.
- Import Substitution Industries.

- Information Technology (IT) Project.
- Handicraft Industry.
- Women Enterprises.

PSIC started credit assistance programme during 1984 and completed 13 schemes up till now. An amount of Rs. 4079 Million has been disbursed to 19,580 entrepreneurs in 36 Districts of Punjab with the recovery rate of 88% that indicates proper utilization of loans.

The maximum loan limit is Rs.3 Million with debit equity ratio of 60:40. The credit assistance facility available for new projects, BMR and Working Capital. The markup rate varies from 0% to 12%. The repayment period of loan is from 3 years to 6 years with grace period of 3 months to 6 months.

Recently, Government of Punjab has provided an amount of Rs. 2000 Million for disbursement through Service Provider Organization i.e. M/s Akhuwat to un-employed and skilled persons of PVTC, TEVTA, SANATZAR's of Social Welfare Department or other unemployed youth having good business plan.

Up till now, M/s Akhuwat has disbursed an amount of Rs. 1650.00 Million to 94,960 poor household in 33 vocations with average loan size of Rs. 17,382 in Punjab through its 142 offices in 30 districts of the Punjab.

To promote the traditional handicrafts in Punjab, PSIC has also launched dedicated credit assistance schemes for the craftsmen at subsidized markup rates. These craftsmen have also been provided marketing facilities through Pakistan Handicrafts Shops.

4.17 SALIENT FEATURES OF THE SEZ BILL 2012

The Law of SEZ has been made to meet the global challenges of competitiveness to attract FDI. The Law/bill will allow to create industrial clusters with liberal incentives, infrastructure, investor facilitation services to enhance productivity and reduce cost of doing business for economic development and poverty reduction. The Law further envisages to reduce processes through SEZ in Pakistan. The establishment of SEZs will attract both domestic as well as international investors. The SEZ would play a pivotal role in the economic development of Pakistan as has been witnessed in case of China, Malaysia, Thailand and other states.

It extends to the whole of Pakistan and overrides other laws (anything contrary);

- All SEZ whether Public, Public-Private or Private-Private to be governed under this Act;
- The Board of Approval (BOA) headed by the Prime Minister of Pakistan with the Minister for Finance as the Vice Chairman shall meet as

frequently as required but not less than twice a year and decisions shall be taken by a majority of the total membership present and voting;

- SEZs will have exemption from customs duties & taxes for all Capital Goods imported into Pakistan for the development , operations and maintenance of a SEZ;
- Exemption from all taxes on income accruable in relation to the development and operations of the SEZ for a period of ten years, starting from the date of signing of the Development Agreement.
- Zone Enterprises have exemption from custom duties etc. on imports of Capital Goods;
- Exemption from taxes on income for a period of 10 years starting from the date the Development certifies that the Zone Enterprise has commenced commercial operations in the relevant SEZ;

There is no limit to the economic potential of Pakistan. The challenge is to create the enabling environment in which this can be realized. Special Economic zones bill is a step towards the economic stability in the country.

4.18 STRATEGIC TRADE POLICY FRAME WORK (2012-2015)

The government unveiled on 29 January, 2013 a medium term (2012-2015) Strategic Trade Policy Framework, setting a cumulative export target of \$95 billion for three years. The framework, the second announced by the federal government will be implemented with a funding of Rs. 26.14 billion. In the first year, Rs.5 billion will be spent on providing subsidies and support to identified sectors.

The focus of the policy is on promoting regional trade and regulatory efficiency, promoting agro-processed exports, increasing exports from less developed regions, revamping export promotion agencies, increasing green exports, enhancing role of women in exports and pursuing product and market development and diversification.

The salient features of the policy include institutional interventions, export development initiatives and regulatory amendments. The policy, offers cash assistance to 14 sectors along with 19 regulatory frameworks, including ban on products as a protective measure against environmental and health hazards. The new framework is designed to provide assistance only to the non-textile sectors.

Institutional Measures: The government will setup institutions like an Export-Import (Exim) Bank, Pakistan Land Port Authority; Leather

Export Promotion Council and a Services Trade Development Council.

Export Development: Major initiatives in the Policy included allowing mark-up rate support of two per cent on prevailing LTFF for future import and purchase of machinery. An allocation of Rs.500 million has been proposed for schemes to be implemented this year. The total amount to be spent in three years is projected at Rs.3 billion. A mark-up support of 1.5% will be provided on export finance scheme (EFS) to selected sectors at a cost of Rs. 1.25 billion, including Rs. 200 million in 2012-2013.

The sectors for EFS support are fish and fish preparations, fruit and vegetables, spices, meat and meat preparations, carpets and rugs, sports goods, footwear, leather products, surgical goods, cutlery, onyx products, pharmaceuticals, electric fans, transport equipment, electrical machinery, specialized machinery, furniture, handicrafts and computer-related services.

An amount of Rs.14 billion will be given as adhoc relief at three per cent of FoB to offset the impact of higher cost of utilities for exporters in selected sectors. The measure will cost Rs.3bn this year. An amount of Rs.2 billion-Rs125 million will be allocated for marketing development assistance for regional countries.

A Rs 25 million allocation has been proposed for export promotion campaigns for agro-processed products; Rs. 400 million for encouraging opening of retail outlets; and Rs.400m for subsidizing 50% cost of plant and machinery for establishing processing plants for meat, fruits, vegetables, dates and olives in Azad Jammu and Kashmir, Baluchistan, Gilgit - Baltistan and Khyber Pakhtunkhwa.

An amount of Rs.30 million will be allocated for upgrading rice inspection laboratories, Rs. 20 million for subsidy at 100% of the prevailing mark-up rate for establishing mining and processing units in Khyber Pakhtunkhwa and Baluchistan.

Another Rs.20 million has been allocated for strengthening women's chamber of commerce and industry, Rs.32 million for setting up a resource management cell at the ministry of commerce, Rs.28 million for establishing leather export promotion council and Rs.70 million for services export development council.

Regulatory Measures

Unrestricted import of used motorized wheelchairs and five-year-old used or second-hand ambulances has been allowed. Two per cent of export proceeds will be allowed to manufacturers-cum-exporters for duty-free import of accessories for value-addition for leather garments and made-ups.

Import of non-hazardous plastic scrap has been allowed for industrial consumers for use as raw material. A ban has been imposed on import of plastic waste, hospital waste, used sewerage pipes and chemical containers.

Import of non-sterilized surgical needles and syringes will be restricted to industrial units, condition of Euro-II may be made applicable on import of all types of specialized vehicles, such as crane-mounted lorries, dump trucks and mixtures lorries. The import of used sprinkle lorries will be restricted to a maximum of five year old. All goods from banned list imported in commercial quality shall be allowed to re-export at importer/shipping lines cost. The imported substandard goods from the restricted list should be destroyed within a period of six months without offering any release.

Import of waste and scrape of tyres in completely shredded/ cut form will only be allowed to industrial consumers; domestic standards will equally apply to imported goods as well.

Construction engineering and electrical companies will be allowed to retain abroad the exported machinery to carry out work on export-cum-import basis with the condition that they will import the same on the conclusion of the contract against indemnity bond.

All exporters of edible products are to be registered and export of vegetable ghee and cooking oil will be allowed in packaging of up to 25kg to encourage value-addition.

Steps to contain Environmental & Health Hazards

- Ban on import of plastic waste/scrap-hospital waste, used sewerage pipes and chemical containers.
- Restricting import of non-sterilized surgical needles and syringes to industrial units.
- Only the more fuel efficient Euro-II category crane-mounted lorries, dump trucks, mixture lorries, etc, will be imported.
- Imported used tyres will only be allowed for industrial use.

Institutions to be Setup

- Export-Import Bank.
- Pakistan Land Port Authority.
- Leather Export Promotion Council.
- Service Trade Development Council.

CHAPTER - V

EXISTING PATTERN OF INDUSTRIAL DEVELOPMENT

5.1 DESCRIPTION OF EXISTING INDUSTRIES

There are about 173 large, medium and some small industrial units in the district. Industry-wise installed capacity of major industrial units is given in Table-9.

TABLE-9

Industry-wise Installed Capacity

| Sr. # | Industry | No. of units | Annual Installed Capacity |
|-------|---------------------------|--------------|-----------------------------|
| 1 | Agricultural Implements | 22 | 9560 Nos. |
| 2 | Bicycle Parts | 2 | 75 Lac. |
| 3 | Cement Products | 7 | 9300 M. Tons |
| 4 | Chip/Straw Board | 1 | 7500 Lac Sq.Ft. |
| 5 | Cold Storage | 19 | 294500 Bags |
| 6 | Cotton Ginning & Pressing | 31 | 150 Sawgins, 31 Press |
| 7 | Confectionery | 1 | 18 M.Tons |
| 8 | Drugs & Pharmaceutical | 2 | 96000 Kg., 187000 Litres |
| 9 | Flour Mills | 13 | 2000 M. Tons /Day |
| 10 | Leather Footwear | 13 | 46050 Pairs |
| 11 | Marble Industry | 9 | 33300 M. Tons |
| 12 | Poultry Feed | 13 | 130000 M.Tons |
| 13 | Power Generation | 1 | 2.360 MW |
| 14 | Rice Mills | 17 | 14 Sheller, 7 Hullers |
| 15 | Sizing of Yarn | 11 | 6000 M.Tons |

| | | | |
|----|------------------|---|-------------------------------|
| 16 | Soap / Detergent | 1 | 100 M.Tons |
| 17 | Sugar | 2 | 20000 TCD |
| 18 | Textile Spinning | 5 | 65896 Spindles, 680 Rotors |
| 19 | Vermicelli's | 3 | 1850 M.Tons |

Source: District Officer (E&IP), Vehari.

Note: For further details visit: www.doi.pitb.gov.pk

CHAPTER - VI

FUTURE INDUSTRIAL POTENTIAL

Keeping in view the availability of raw-material, skilled labour, industrial units, local / national / international demand, future industrial potential of district Toba Tek Singh is discussed hereunder:-

It would, however, be kept in mind that though the above mentioned factors facilitate the success of any industrial unit, yet the entire success depends upon the investors / entrepreneurs and the capabilities of the personnel having the managerial control. Therefore, it is advisable that detailed feasibility of industrial project must be carried out before making final decision for investment.

6.1 AGRICULTURE

Main Crops of district TT Singh are Wheat, Sugarcane, Cotton, Maize, Rice, Moong, Masoor and Mash. The average annual production of Wheat, Sugarcane, Maize, Cotton, Rice, Moongh and Mash during the period 2008-09 to 2010-11 was 496.45, 2043.19, 104.77, 62.59, 348.67, 61 & 17 thousand M. Tons respectively and of cotton was 140.14 thousand bales.

Among fruit, citrus, Guava and Mango are abundantly grown in the district. The annual

average production was 149.569, 24.574 and 6.174 thousand M. Tons over the period 2008-09 to 2010-11. A variety of vegetables are also grown (Chapter-3, Section 3.1).

At present, in district TT Singh, there are 2 Sugar Mills, 5 Textile Spinning, 13 Flour Mills, 11 Yarn Sizing Units and 31 Cotton Ginning/Pressing factories (Chapter-5, Section 5.1).

In view of the availability of raw-materials and existing industries, there exists good scope for textile spinning mills, fruit juice/citrus concentrate, vegetable dehydration, solvent oil extraction and rice husk briquettes, etc.

6.2 LIVESTOCK

As per Punjab Development Statistics 2011, the population of Cattle, Buffaloes, Sheep and Goat was 331, 510, 50 and 578 thousand heads respectively. The availability of hides and skins is estimated at 123300 pieces annually. As regards poultry, there are 852 Broilers farms, 449 Layer farms and 12 Breeding farms having rearing capacity of 20793, 4736 and 175 thousand birds respectively (Chapter-3, Section 3.3).

In view of the above, there exist scope for Dairy Farms, Cattle / Goat / Sheep Fattening Farms, Poultry Processing Unit, Egg Yolk Powder and a Tannery.

6.3 INDUSTRY

The major industrial units of district are 2 Sugar Mills and 5 Textile Spinning Mills. However, a careful study based on bagasse, forest resources, wheat straw, waste paper and imported wood pulp may reflect a feasible prospect for a paper and board mills.

Besides, sugar mills, there are a number of power looms units, in the district, which reflect very good prospect for textile processing unit, hosiery, bed wear and durries, etc.

6.4 DEMAND BASED INDUSTRIES

In view of general localized requirements of district TT Singh and existing industrial pattern, there exists good prospects for Straw Board, RCC Pipes / Girders / Slabs, Electrical Accessories, Wire Gauze Weaving, PVC Foot Wear, Poultry Farm Equipment, Plastic Flush Tanks, Steel Doors and Windows, etc.

6.5 LIST OF IDENTIFIED PROJECTS

As per discussion given in Section 6.1 to 6.4, the following projects are identified for investment in District Toba Tek Singh:

- Agriculture waste, by products raw material based industries for maximization of value addition chain
- Bed-Wear
- Cattle/Sheep/Goat Fattening Farm
- Durries
- Dairy Farms
- Egg Yolk Powder
- Electrical Accessories
- Energy conservation / efficiency
- Fruit Juice/Citrus Concentrate
- Hosiery
- Poultry Processing Unit
- Paper and Board Mill
- Poultry Farm Equipment
- Plastic Flush Tanks
- Power generation through coal and other alternate fuels
- Power generation through bagasse
- Rice Husk Briquettes
- RCC Pipes/Girders/Slabs
- Straw Board
- Solvent Oil Extraction
- Steel Doors / Windows
- Tannery
- Textile Spinning Mills
- Vegetable Dehydration
- Waste heat recovery system
- Wire-Gauze Weaving

Directory of Industrial Establishments, Toba Tek Singh

| Sr. No. | Name / Address of unit | Phone No. / Website | Industry | Estb. Year | Investment (Th.Rs.) | Emp | Product | Annual Installed Capacity |
|---------|--|---------------------|-------------------------|------------|---------------------|-----|-------------------------|---------------------------|
| 1 | Akbar Iftikhar Zari Industries Moongi Road Near GB.Stand Gojra | 3515045 | Agricultural Implements | 1977 | 1800 | 12 | Agricultural Implements | 300 Nos. |
| 2 | Barkat Wheat Thresher Sammundri Road Gojra | 2515395 | Agricultural Implements | 1985 | 2063 | 2 | Agricultural Implements | 210 Nos. |
| 3 | Fahid Engg Works Shorkot Road Pir Mahal Kamalia | 3360191 | Agricultural Implements | 1999 | 2000 | 2 | Agricultural Implements | 100 Nos. |
| 4 | Hakeem Wheat Thresher Sammundri Road Gojra | 3516088 | Agricultural Implements | 1990 | 670 | 2 | Agricultural Implements | 280 Nos. |
| 5 | Ilyas Agricultural Implements, Summandri Road, Gojra | | Agricultural Implements | 2005 | 1000 | 4 | Agricultural Implements | 200 Nos. |
| 6 | Jaja Industries Waryam Road Zila Colony | 2512163 | Agricultural Implements | 1995 | 1260 | 2 | Agricultural Implements | 200 Nos. |
| 7 | Kisan Wheat Thresher Jhang Road Gojra | 3516369 | Agricultural Implements | 1990 | 3660 | 2 | Agricultural Implements | 250 Nos. |
| 8 | Madina Zari Industry Sammundri Road Gojra | 3510526 | Agricultural Implements | 1978 | 6940 | 15 | Agricultural Implements | 300 Nos. |
| 9 | Mirza Anwar Hull Maker O/S Sabzi Mandi | 0301-7288384 | Agricultural Implements | 1986 | 400 | 300 | Agricultural Implements | 300 Nos. |
| 10 | Mirza Bashir Agricultural Implements, Shorkot Road, Toba | | Agricultural Implements | 1972 | 900 | 4 | Agricultural Implements | 250 Nos. |

| Sr. No. | Name / Address of unit | Phone No. / Website | Industry | Estb. Year | Investment (Th.Rs.) | Emp | Product | Annual Installed Capacity |
|---------|---|---------------------|-------------------------|------------|---------------------|-----|-------------------------|---------------------------|
| 11 | Mirza Imdad Agricultural Implements, Sabzi Mandi Road, Toba | 0334-6265374 | Agricultural Implements | 1996 | 400 | 3 | Agricultural Implements | 100 Nos. |
| 12 | Mirza Shukat Engineering Works, Summandri Road, Gojra | | Agricultural Implements | 2005 | 900 | 4 | Agricultural Implements | 250 Nos. |
| 13 | Mukhtar Ahmed Karah Makers Shorkot Road | 2512935 | Agricultural Implements | 1991 | 400 | 3 | Agricultural Implements | 100 Nos. |
| 14 | New Sultania Engineering Works Samundri Road Gojra | 3511471 | Agricultural Implements | 1970 | 6360 | 18 | Agricultural Implements | 170 Nos. |
| 15 | Pakistan Wheat Threshers Samundri Road Gojra | 3510500 | Agricultural Implements | 1980 | 1200 | 10 | Agricultural Implements | 100 Nos. |
| 16 | Prince Agricultural Implements, Summandri Road, Gojra | | Agricultural Implements | 2006 | 1100 | 4 | Agricultural Implements | 200 Nos. |
| 17 | Qasim Engineering Works Chak No.323/Jb Trandi Gojra Road | 2515714 | Agricultural Implements | 1980 | 5270 | 14 | Agricultural Implements | 2500 Nos. |
| 18 | Riaz Pervaiz Engineering Gojra Mochi Wala Road Gojra | 3511155 | Agricultural Implements | 1982 | 2690 | 13 | Agricultural Implements | 110 Nos. |
| 19 | Saleem Bashir Engineering Works Rajana Road | 2511995 | Agricultural Implements | 1988 | 1100 | 5 | Agricultural Implements | 250 Nos. |

| Sr. No. | Name / Address of unit | Phone No. / Website | Industry | Estb. Year | Investment (Th.Rs.) | Emp | Product | Annual Installed Capacity |
|---------|--|---------------------|-------------------------|------------|---------------------|-----|-------------------------|---------------------------|
| 20 | Yadgar Engg. Works Samundri Road Gojra | 3511187 | Agricultural Implements | 1987 | 4530 | 13 | Agricultural Implements | 190 Nos. |
| 21 | Zafar Javed Wheat Thresher, Mungi Road, Bus Stand, Gojra | 3515045 | Agricultural Implements | 1977 | 1800 | 12 | Agricultural Implements | 300 Nos. |
| 22 | Zafar Javed Zari Industry Chowk Jamia Charighia Gojra | 3510377 | Agricultural Implements | 1977 | 2500 | 11 | Agricultural Implements | 300 Nos. |
| 23 | Punjab Stand Carrier Makers, Near General Bus Stand, Gojra | 3512942 | Bicycle Parts | 1995 | 560 | 5 | Cycle Parts | 45 Lac |
| 24 | Super Star Stand Carrier Makers, Near General Bus Stand, Gojra | 3510334 | Bicycle Parts | 1999 | 450 | 3 | Cycle Parts | 30 Lac |
| 25 | Azam Cement Products, Pansara Road, Gojra | 0301-7238465 | Cement Products | 2009 | 300 | 6 | Cement Products | 1200 M. Tons |
| 26 | Javed R.C.C. Pipe Factory, Rajana Road | | Cement Products | 1980 | 560 | 4 | Cement Products | 1200 M. Tons |
| 27 | Junaid R.C.C. Pipe Factory, Rajana Road | 2515540 | Cement Products | 1996 | 500 | 6 | Cement Products | 1500 M. Tons |
| 28 | Khalid Pipe Cement Factory, Jhang Road, Nia Lahore, Gojra | 0301-7232335 | Cement Products | 2001 | 782 | 6 | Cement Products | 1200 M. Tons |
| 29 | Rana Cement Factory, Pansara Road, Gojra | 0300-8658277 | Cement Products | 2010 | 300 | 7 | Cement Products | 1200 M. Tons |

| Sr. No. | Name / Address of unit | Phone No. / Website | Industry | Estb. Year | Investment (Th.Rs.) | Emp | Product | Annual Installed Capacity |
|---------|---|---------------------|--------------------|------------|---------------------|-----|-------------------|---------------------------|
| 30 | Sakhawat Cement Products, Faisalabad Road, Rajana | | Cement Products | 1994 | 1500 | 7 | Cement Products | 1500 M. Tons |
| 31 | Yasin R.C.C. Pipe Factory, Chak No.318/Jb, Gojra Road | | Cement Products | 1995 | 300 | 10 | Cement Products | 1500 M. Tons |
| 32 | Hamza Board (Pvt) Ltd. Pensara Road Gojra | 3548119 | Chip / Straw Board | 1992 | 15680 | 70 | Chip Board | 7500 Lac Sq.Ft. |
| 33 | Agro Cold Storage Factory Mendiabad Road Gojra | 3511893 | Cold Storage | 1980 | 1500 | 5 | Vegetable/ Fruits | 12000 Bags |
| 34 | Akrama Industries (Pvt) Ltd. Gojra | 3511336 | Cold Storage | 1978 | 2820 | 6 | Vegetable/ Fruits | 17000 Bags |
| 35 | Al-Hermain Cold Storage, Pansara Road, Gojra | 3510862 | Cold Storage | 2010 | 2000 | 13 | Vegetable/ Fruits | 20000 Bags |
| 36 | Altaf Industries (Pvt) Ltd. Jhang Road, Gojra | 3511840 | Cold Storage | 2005 | 2980 | 6 | Vegetable/ Fruits | 12000 Bags |
| 37 | Awami Cold Storage Samundri Road, Gojra | 3512040 | Cold Storage | 1980 | 2624 | 8 | Vegetable/ Fruits | 5000 Bags |
| 38 | Azhar Cold Storage, Samundri Road, Gojra | 3510266 | Cold Storage | 1990 | 4000 | 5 | Vegetable/ Fruits | 17000 Bags |
| 39 | Aziz Cold Storage, Mehdiabad, Gojra | 3510323 | Cold Storage | 1989 | 3600 | 7 | Vegetable/ Fruits | 15000 Bags |

| Sr. No. | Name / Address of unit | Phone No. / Website | Industry | Estb. Year | Investment (Th.Rs.) | Emp | Product | Annual Installed Capacity |
|---------|--|---------------------|--------------|------------|---------------------|-----|-------------------|---------------------------|
| 40 | B.R. Cold Storage, Rajana Road, Kamalia | 3416027 | Cold Storage | 2004 | 6200 | 7 | Vegetable/ Fruits | 8000 Bags |
| 41 | Hassan Cold Storage, Rajana Road, Kamalia | 0300-7233972 | Cold Storage | 2010 | 7000 | 3 | Vegetable/ Fruits | 20000 Bags |
| 42 | Hussainia Cold Storage, Dijkot Road, Near Gbs, Gojra | 3512247 | Cold Storage | 1988 | 1500 | 4 | Vegetable/ Fruits | 10000 Bags |
| 43 | Kamalia Cold Storage, Rajana Road, Kamalia | 3412449 | Cold Storage | 1978 | 1500 | 3 | Vegetable/ Fruits | 15000 Bags |
| 44 | Lasani Cold Storage, Jhakkar Road, Kamalia | 0300-7971573 | Cold Storage | 2010 | | 4 | Vegetable/ Fruits | 32000 Bags |
| 45 | Mehroze Cold Storage, Pensara Road, Gojra | 3511834 | Cold Storage | 1995 | 8000 | 7 | Vegetable/ Fruits | 7500 Bags |
| 46 | Muzaffar Cold Storage, Mehdiabad Road, Gojra | 3515231 | Cold Storage | 1990 | 1150 | 6 | Vegetable/ Fruits | 12000 Bags |
| 47 | Pakistan Cold Storage, Shorkopt Pirmahal Road, T.T.Singh | 0332-8526471 | Cold Storage | 2010 | 250 | 3 | Vegetable/ Fruits | 15000 Bags |
| 48 | Sarwar Cold Storage, Mehdiabad Road, Gojra | 3512430 | Cold Storage | 1992 | 5000 | 6 | Vegetable/ Fruits | 8000 Bags |
| 49 | Tariq Ice & Cold Storage, Pensara Road, Gojra | 3516064 | Cold Storage | 1994 | 2000 | 4 | Vegetable/ Fruits | 15000 Bags |

| Sr. No. | Name / Address of unit | Phone No. / Website | Industry | Estb. Year | Investment (Th.Rs.) | Emp | Product | Annual Installed Capacity |
|---------|--|---------------------|-----------------------------|------------|---------------------|-----|--------------------------|---------------------------|
| 50 | Umar Cold Storage, Jhang Road, Gojra | 3516056 | Cold Storage | 1978 | 2000 | 6 | Vegetable/ Fruits | 7000 Bags |
| 51 | Zahid Cold Storage Pansara Road, Gojra | 3510311 | Cold Storage | 2007 | 2000 | 25 | Vegetable/ Fruits | 47000 Bags |
| 52 | Vilal Food Industries, 249/Gb | 341362149 | Confectionery | 1993 | 210 | 2 | Sweets | 18 M.Ton |
| 53 | Adeel Cotton Ginning & Pressing Mills Chak No.244/Gb Mongi Bunglow, Gojra | 3415541, 3445344 | Cotton Ginning And Pressing | 1992 | 18083 | 28 | Cotton Lint /Seed | 4 Sawgins, 1 Press |
| 54 | Al-Rehmat Cotton Ginning (Pvt) Ltd., Adda Mongi Bunglow Killianwala Road Gojra | 3445156 | Cotton Ginning And Pressing | 1992 | 4550 | 17 | Cotton Lint /Seed | 4 Sawgins, 1 Press |
| 55 | Ch.Cotton Ginning & Pressing Factory Sindlianwali Road, Pirmahal | 3311311 | Cotton Ginning And Pressing | 1987 | 3500 | 30 | Cotton Lint /Seed | 4 Sawgins , 1 Press |
| 56 | Chenab Cotton Ginnign Factory Chak No.299/Gb | 2512372 - 73 | Cotton Ginning And Pressing | 1997 | 5960 | 30 | Cotton Lint/ Cotton Seed | 5 Sawgins , 1 Press |
| 57 | Chenab Industries Khuman Wala Road | 2512372 | Cotton Ginning And Pressing | 1974 | 12500 | 60 | Cotton Lint /Seed | 8 Sawgins , 1 Press |

| Sr. No. | Name / Address of unit | Phone No. / Website | Industry | Estb. Year | Investment (Th.Rs.) | Emp | Product | Annual Installed Capacity |
|---------|--|---------------------|-----------------------------|------------|---------------------|-----|-------------------|---------------------------|
| 58 | Dada Cotton Ginning & Pressing Mills Sindhlianwala Road, Pirmahal | 3360586, 3360379 | Cotton Ginning And Pressing | 1980 | 8000 | 18 | Cotton Lint /Seed | 5 Sawgins , 1 Press |
| 59 | Farooq Murtaza Cotton Mills (Pvt) Ltd 6.K. Mochiwala Road, | 2511957-58 | Cotton Ginning And Pressing | 1992 | 5560 | 16 | Cotton Lint /Seed | 8 Sawgins , 1 Press |
| 60 | Gojra Cotton Ginning Factory Jhang Road,Gojra | 3510330 | Cotton Ginning And Pressing | 1987 | 4650 | C | Cotton Lint /Seed | 4 Sawgins , 1 Press |
| 61 | Gulshan Cotton Ginning & Pressing Factory Sindhlianwali Road, Pirmahal | 3360660, 3361166 | Cotton Ginning And Pressing | 1992 | 4800 | 20 | Cotton Lint /Seed | 4 Sawgins , 1 Press |
| 62 | Haidar Cotton & Oil Factory Industries, Rajana Road, Phloor | 2540054-55 | Cotton Ginning And Pressing | 1991 | 4000 | 28 | Cotton Lint /Seed | 5 Sawgins , 1 Press |
| 63 | Ikrama Cotton Factory Jhang Road Gojra | 3511332-33, 3511337 | Cotton Ginning And Pressing | 1978 | 5540 | 26 | Cotton Lint /Seed | 5 Sawgins , 1 Press |
| 64 | Inayat Cotton Ginning & Pressing Factory Sindhlianwali | | Cotton Ginning And Pressing | 1987 | 3400 | 14 | Cotton Lint /Seed | 4 Sawgins , 1 Press |
| 65 | Ittefaque Cotton Ginning & Oil Mills, Chak 253/Gb, Soondh Samundri Rd | 2540486 | Cotton Ginning And Pressing | 1990 | 3640 | 30 | Cotton Lint /Seed | 4 Sawgins , 1 Press |

| Sr. No. | Name / Address of unit | Phone No. / Website | Industry | Estb. Year | Investment (Th.Rs.) | Emp | Product | Annual Installed Capacity |
|---------|--|---------------------|-----------------------------|------------|---------------------|-----|--------------------------|---------------------------|
| 66 | M.N.A. Cotton Factory (Pvt) Ltd., Sindhlianwali Road Pir Mahal | 3361771-72 | Cotton Ginning And Pressing | 1994 | 17500 | 24 | Cotton Lint/ Cotton Seed | 6 Sawgins , 1 Press |
| 67 | Madina Cotton Industries Pensara Road Gojra | 3548294 | Cotton Ginning And Pressing | 1979 | 8200 | 29 | Cotton Lint /Seed | 4 Sawgins , 1 Press |
| 68 | Mahmood Cotton Ginners, Pansara Road, Gojra | 3510431-2, 3415156 | Cotton Ginning And Pressing | 1975 | 18175 | 36 | Cotton Lint /Seed | 5 Sawgins , 1 Press |
| 69 | Mashallah Cotton Ginning Mills (Pvt) Ltd. Chak # 100 Gb, Monghi Road, Gojra | 3445160 | Cotton Ginning And Pressing | 1980 | 14000 | 30 | Cotton Lint /Seed | 5 Sawgins , 1 Press |
| 70 | Mongi Cotton Ginning Mills (Pvt) Ltd; Chak No.160 Gb Monghi Gojra | 3445156, 3445157 | Cotton Ginning And Pressing | 1992 | 9500 | 22 | Cotton Lint /Seed | 6 Sawgins , 1 Press |
| 71 | Muhammad Mustafa C/G & Oil Mills (Pvt) Ltd. Chak No.352 Mouchiwala Road, Gojra | 3511382 | Cotton Ginning And Pressing | 1992 | 6520 | 17 | Cotton Lint /Seed | 4 Sawgins , 1 Press |
| 72 | Muqadas Cotton Ginning & Oil Mills, Shorkot Road, Kamalia | 3413995 | Cotton Ginning And Pressing | 1986 | 11232 | 17 | Cotton Lint /Seed | 5 Sawgins , 1 Press |
| 73 | Nayab Cotton Ginning (Pvt) Ltd. Chak 242 Gb Gojra | 3524662 | Cotton Ginning And Pressing | 1993 | 12201 | 15 | Cotton Lint /Seed | 5 Sawgins , 1 Press |

| Sr. No. | Name / Address of unit | Phone No. / Website | Industry | Estb. Year | Investment (Th.Rs.) | Emp | Product | Annual Installed Capacity |
|---------|--|---------------------|-----------------------------|------------|---------------------|-----|-------------------|---------------------------|
| 74 | Noor Iqbal Factory, Chak No.321, Shorkot | | Cotton Ginning And Pressing | 1982 | 3100 | 26 | Cotton Lint /Seed | 4 Sawgins , 1 Press |
| 75 | Phalour Cotton Ginning Factory (Pvt) Ltd. Phalore Chak 256/Gb | 2540474-5 | Cotton Ginning And Pressing | 1994 | 16190 | 13 | Cotton Lint /Seed | 4 Sawgins , 1 Press |
| 76 | Punjab Cotton Ginning Factory (Pvt) Ltd; Adda Phloor Rajana Summandri Road | 2540059-60 | Cotton Ginning And Pressing | 1991 | 15205 | 46 | Cotton Lint /Seed | 4 Sawgins , 1 Press |
| 77 | Rahbar Cotton Ginning & Pressing Fctory Jhang Road Gojra | 514872 | Cotton Ginning And Pressing | 1990 | 8255 | 26 | Cotton Lint /Seed | 4 Sawgins , 1 Press |
| 78 | Rajana Cotton Factory (Pvt) Ltd Sammundi Road, | 264211 | Cotton Ginning And Pressing | 1991 | 3500 | 27 | Cotton Lint /Seed | 4 Sawgins , 1 Press |
| 79 | Rehan Cotton Ginning Factory (Pvt) Ltd. Rajana Road, Pir Mahal | 3366424, 3361140 | Cotton Ginning And Pressing | 1991 | 6800 | 40 | Cotton Lint /Seed | 8 Sawgins , 1 Press |
| 80 | Shorkot Cotton Ginning & General Mills Chak No.327-Shorkot Road | 5500745 | Cotton Ginning And Pressing | 1952 | 5000 | 30 | Cotton Lint /Seed | 5 Sawgins , 1 Press |
| 81 | Top Cotton Ginning (Pvt) Ltd. Chak 251/Gb | | Cotton Ginning And Pressing | 1992 | 4000 | C | Cotton Lint /Seed | 4 Sawgins , 1 Press |

| Sr. No. | Name / Address of unit | Phone No. / Website | Industry | Estb. Year | Investment (Th.Rs.) | Emp | Product | Annual Installed Capacity |
|---------|--|---------------------|-----------------------------|------------|---------------------|-----|--------------------------|------------------------------|
| 82 | Umar Bilal Industries (Pvt) Ltd Jhang Road Gojra | 3511140 | Cotton Ginning And Pressing | 1991 | 4500 | C | Cotton Lint/ Cotton Seed | 4 Sawgins , 1 Press |
| 83 | Zain Cotton (Pvt) Ltd. Sindlianwala Road Pir Mahal | 3360888 | Cotton Ginning And Pressing | 1992 | 2584 | 25 | Cotton Lint /Seed | 5 Sawgins , 1 Press |
| 84 | Saleemi Pharmacy Unani Medicines, Chak No.296/Gb, Gojra | | Drugs & Pharmaceu ticals | 1991 | 600 | 6 | Medicines Liquid | 6000 Kg 12000 Litre |
| 85 | Vital Mark Laboratories (Pvt) Ltd. Chak No. 249/Gb, Gojra Muridwala Road | 2528353 | Drugs & Pharmaceu ticals | 1993 | 5000 | 12 | Tablets, Syrup | 90000 Kgs., 175000 Litres |
| 86 | Al-Fateh Flour Mills, Fazal Dewan, Kamalia | 3412406 | Flour Mills | 1990 | 5000 | 9 | Flour | 40 M.Tons /Day |
| 87 | Babar Flour Industry (Pvt) Ltd. Samundri Road Rajana | 263542 | Flour Mills | 1988 | 17500 | 20 | Flour | 160 M.Tons /Day |
| 88 | Cheema Flour Mills, Mochiwala Road, Gojra | 3512900, 3512430 | Flour Mills | 1998 | 16000 | 31 | Flour | 160 M.Tons /Day |
| 89 | Gohar Flour & General Mills (Pvt) Ltd; Mongi Road Gojra | 3510391, 3510491 | Flour Mills | 1992 | 9010 | 17 | Flour | 200 M.Tons /Day |
| 90 | Gojra Flour & General Mills Pansara Road Gojra | 3510842 | Flour Mills | 1981 | 12550 | 20 | Flour | 160 M.Tons /Day |

| Sr. No. | Name / Address of unit | Phone No. / Website | Industry | Estb. Year | Investment (Th.Rs.) | Emp | Product | Annual Installed Capacity |
|---------|---|---------------------|-------------------|------------|---------------------|-----|-------------------|---------------------------|
| 91 | Golden Flour & General Mills Toba Road Gojra | 3512345 | Flour Mills | 1998 | 10782 | 19 | Flour | 240 M.Tons / Day |
| 92 | Khokhar Flour Mills Akal Wala Road | 2510991 | Flour Mills | 1991 | 17301 | 19 | Flour | 160 M.Tons /Day |
| 93 | Madina Flour Mills Jhang Road | 2511967 | Flour Mills | 1984 | 13945 | 20 | Flour | 160 M.Tons /Day |
| 94 | Malik Flour Mills, Jhakkar Road, Kamalia | 3414408 | Flour Mills | 1996 | 8000 | 25 | Flour | 160 M.Tons /Day |
| 95 | Pirmahal Flour Mills (Pvt) Ltd; Pir Mahal Sindhilianwali Road Pir Mahal | 3360776 | Flour Mills | 1997 | 188000 | 19 | Flour | 160 M.Tons /Day |
| 96 | Prime Flour Mills, Pansara Road, Gojra | 3548131 | Flour Mills | 2008 | 10200 | 19 | Flour | 160 M.Tons /Day |
| 97 | Tufail Flour Mills (Pvt) Ltd. Summandri Road, Gojra | 3510738 | Flour Mills | 2008 | 8050 | 17 | Flour | 240 M.Tons /Day |
| 98 | Wheat Millers Ghalla Mandi Road Kamalia | 3415577 | Flour Mills | 1995 | 2450 | 13 | Flour | 160 M.Tons /Day |
| 99 | Asama Enterprises, Sammundri Road, New Gulzar Cinema, Gojra | 2510749 | Leather Footwears | 2002 | 850 | 40 | Leather Footwears | 15000 Pairs |
| 100 | Butt Shoes Factory Sammundri Road Gojra | 3513401 | Leather Footwears | 1995 | 6600 | 33 | Leather Footwears | 70000 Pairs |
| 101 | Butt Shoes Factory, Waryam Road Toba Tek Singh | 0321-7534310 | Leather Footwears | 2010 | 210 | 5 | Leather Footwears | 10000 Pairs |

| Sr. No. | Name / Address of unit | Phone No. / Website | Industry | Estb. Year | Investment (Th.Rs.) | Emp | Product | Annual Installed Capacity |
|---------|--|---------------------|-------------------|------------|---------------------|-----|-------------------|---------------------------|
| 102 | Hanif Shoes Factory Mundar Block Pir Mahal | | Leather Footwears | 1991 | 200 | 10 | Leather Footwears | 10000 Pairs |
| 103 | Ittehad Shoes Factory Waryam Road | | Leather Footwears | 1993 | 210 | 9 | Leather Footwears | 7500 Pairs |
| 104 | Minthar Shoes Factory Awami Basti | 0301-7293721 | Leather Footwears | 2001 | 1550 | 18 | Leather Footwears | 8000 Pairs |
| 105 | Muhammad Akram Mohallah Goshala | | Leather Footwears | 1994 | 290 | 8 | Leather Footwears | 30000 Pairs |
| 106 | O.K. Shoes Company Mamukanjan Road, Kamalia | | Leather Footwears | 1990 | 210 | 5 | Leather Footwears | 10000 Pairs |
| 107 | Sunny Shoes Bakshi Park Waryam Road | 0300-8796705 | Leather Footwears | 1997 | 1350 | 12 | Leather Footwears | 45000 Pairs |
| 108 | Taj Din Shoes Co. Mochiwala Road Gojra | | Leather Footwears | 1985 | 1130 | 22 | Leather Footwears | 15000 Pairs |
| 109 | Usama Enterprises Sammundri Road Gojra | 3510749 | Leather Footwears | 2003 | 12500 | 40 | Leather Footwears | 120000 Pairs |
| 110 | V.I.P Shoes Factory, Zia Colony Toba Tek Singh | 0333-6871189 | Leather Footwears | 2008 | 280 | 8 | Leather Footwears | 30000 Pairs |
| 111 | Yawar Saleem Mandar Block Gali No.1 Pir Mahal | | Leather Footwears | 1986 | 360 | 20 | Leather Footwears | 90000 Pairs |
| 112 | Al-Madina Marble Factory, Jhona Shah Road, Kamalia | - | Marble Industry | 2009 | 700 | 3 | Marble Products | 3500 M.Tons |
| 113 | Bismillah Marble Factory | 0321-9151802 | Marble Industry | 2007 | 800 | 2 | Marble Products | 3500 M.Tons |

| Sr. No. | Name / Address of unit | Phone No. / Website | Industry | Estb. Year | Investment (Th.Rs.) | Emp | Product | Annual Installed Capacity |
|---------|---|---------------------|-----------------|------------|---------------------|-----|-----------------|---------------------------|
| 114 | Danish Marble Factory, Ghousia Chowk, Pirmahal | 0300-6569550 | Marble Industry | 2004 | 710 | 3 | Marble Products | 4000 M.Tons |
| 115 | Hafiz Marble Factory, Pensare Road, Katcha, Gojra | 517355 | Marble Industry | 2002 | 720 | 3 | Marble Products | 4000 M.Tons |
| 116 | Itefaq Marbel Factory, Jhang Road, Gojra | 0334-7968466 | Marble Industry | 2004 | 720 | 3 | Marble Products | 4000 M.Tons |
| 117 | Javed Marble Factory, Chak No. 319 Toba Tek Singh | 0300-6567956 | Marble Industry | 1996 | 700 | 3 | Marble Products | 3500 M.Tons |
| 118 | Kashmir Marble Factory, Chak No. 319 Toba Tek Singh | 0300-6566748 | Marble Industry | 2008 | 725 | 3 | Marble Products | 3800 M.Tons |
| 119 | Muhammad Amin Marble Factory, Chak No. 319 | 3366244 | Marble Industry | 2005 | 800 | 2 | Marble Products | 3500 M.Tons |
| 120 | Shah Marble Factory, Rajana Road, Kamalia | 0333-6887463 | Marble Industry | 2010 | 800 | 2 | Marble Products | 3500 M.Tons |
| 121 | Cornation Feed Industries (Pvt) Ltd. Samundri Road Gojra | 510451 | Poultry Feed | 1989 | 1500 | C | Poultry Feed | 12000 M.Tons |
| 122 | Data Feed Industries Near Octori Post Rajana Road Kamalia | 3411817 | Poultry Feed | 1987 | 7600 | 10 | Poultry Feed | 7000 M.Tons |
| 123 | Gojra Feed Industries Mungi Road Gojra | 3511901-2 | Poultry Feed | 1992 | 1800 | 4 | Poultry Feed | 12000 M.Tons |

| Sr. No. | Name / Address of unit | Phone No. / Website | Industry | Estb. Year | Investment (Th.Rs.) | Emp | Product | Annual Installed Capacity |
|---------|---|---------------------|------------------|------------|---------------------|-----|--------------|---------------------------|
| 124 | Insaf Feed Mills, Near Mian Hospital, GBS, Rajana Road, Kamalia | 3411289 | Poultry Feed | 1983 | 3500 | 5 | Poultry Feed | 2000 M.Tons |
| 125 | Ittifaq Feeds Industries Rajana Road, Kamalia | 3412451 | Poultry Feed | 1989 | 1250 | 5 | Poultry Feed | 12500 M.Tons |
| 126 | J.B.Complex Poultry Feed Mills Al-Rai Medicos 88 More Pir Mahal Kamalia | 3411887 | Poultry Feed | 1975 | 1200 | 14 | Poultry Feed | 12000 M.Tons |
| 127 | Kamalia Feed Industries Rajana Road Kamalia | 3412484 | Poultry Feed | 1986 | 2510 | 4 | Poultry Feed | 12000 M.Tons |
| 128 | Milat Feed, Kamalia Road, Rajana | 3411681 | Poultry Feed | 2008 | 10000 | 10 | Poultry Feed | 5000 M.Tons |
| 129 | Muhammad Ashraf Poultry Feed Mongi Road Gojra | | Poultry Feed | 1994 | 575 | 3 | Poultry Feed | 2000 M.Tons |
| 130 | New Kamalia Feed Mills Rajana Road Kamalia | 3413189, 3412441 | Poultry Feed | 1999 | 8000 | 15 | Poultry Feed | 20000 M.Tons |
| 131 | Rustam Feed Industries Mamukanjan Road Kamalia | 3414377, 3415270 | Poultry Feed | 1999 | 12050 | 15 | Poultry Feed | 15000 M.Tons |
| 132 | Sardar Feed Industries Rajana Road Kamalia | 3411940, 3411362 | Poultry Feed | 1979 | 2300 | 5 | Poultry Feed | 12500 M.Tons |
| 133 | Super Feed Industries Rajana Road Kamalia | 3416348, 3414148 | Poultry Feed | 2004 | 10060 | 10 | Poultry Feed | 6000 M.Tons |
| 134 | Faisal Energy Plant Nia Lahore Gojra | 560324, 560326 | Power Generation | 1997 | 12500 | 20 | Electricity | 2.300 Mw |

| Sr. No. | Name / Address of unit | Phone No. / Website | Industry | Estb. Year | Investment (Th.Rs.) | Emp | Product | Annual Installed Capacity |
|---------|--|---------------------|------------|------------|---------------------|-----|---------|---------------------------|
| 135 | Ahmad Rice Mills, Chichawatni Road, Kamalia | 3412327 | Rice Mills | 1988 | 5110 | 22 | Rice | 2 Shellers |
| 136 | Ali Rice Factory, By-Pass Pirmahal | 3367351 | Rice Mills | 2009 | 20 | 6 | Rice | 1 Sheller |
| 137 | Al-Karim Fazal Rice Mills, By-Pass Opposite Mehrban Town, Pirmahal | 0345-7550668 | Rice Mills | 2009 | 120 | 3 | Rice | 1 Sheller |
| 138 | Amman Rice Mills Near P.S. Arooti Kamalia | 3523268 | Rice Mills | 2003 | 2500 | 15 | Rice | 1 Sheller |
| 139 | Bismillah Rice Mills Sindhlianwali Road, Pirmahal | 0302-7283375 | Rice Mills | 2009 | 120 | 3 | Rice | 1 Sheller |
| 140 | Faisal Abbas Rice Mills Pir Mahal Road Kamalia | 2000696 | Rice Mills | 2005 | 5500 | 20 | Rice | 1 Sheller |
| 141 | Hafiz Rice Mills Sandhlianwali Road Kamalia | 3412088 | Rice Mills | 1980 | 5000 | 23 | Rice | 1 Sheller |
| 142 | Imran Rice Mills, Chak No.708/Jgb, Sindhlianwali Road, Kamalia | 3415082 | Rice Mills | 1986 | 8750 | 20 | Rice | 1 Sheller |
| 143 | Madina Rice Mills Rajana Road Kamalia | 3411183 | Rice Mills | 1980 | 1860 | 21 | Rice | 1 Sheller |
| 144 | Mah-Noor Rice Mills, Rajana Road, Pirmahal | 0300-6572484 | Rice Mills | 2009 | 150 | 3 | Rice | 1 Sheller |

| Sr. No. | Name / Address of unit | Phone No. / Website | Industry | Estb. Year | Investment (Th.Rs.) | Emp | Product | Annual Installed Capacity |
|---------|---|---------------------|----------------|------------|---------------------|-----|----------------|---------------------------|
| 145 | Muhammad Iqbal Rice Mills Chak No.720/Gb Kamalia Road Sindhlianwali | | Rice Mills | 1990 | 20 | 5 | Rice | 1 Huller |
| 146 | Muhammad Rafique Rice Mills Chak No.671/12 Bhusi Road Pirmahal | | Rice Mills | 1990 | 120 | 3 | Rice | 1 Huller |
| 147 | Mushtaq Ahmad Rice Mills Kamalia Road Sindhlianwali | | Rice Mills | 1990 | 20 | 1 | Rice | 1 Huller |
| 148 | Saleem Rice Mills, Rajana Road, Kamalia | 3411937 | Rice Mills | 1980 | 6400 | 23 | Rice | 4 Huller |
| 149 | Taj Rice Mills, Chak 713/Gb | 0300-7289453 | Rice Mills | 2009 | 120 | 3 | Rice | 1 Sheller |
| 150 | Yaqoob Rice Mills Chichawatni Road Kamalia | 3415800 | Rice Mills | 1985 | 12200 | 18 | Rice | 1 Sheller |
| 151 | Zain Rice Factory Maal Mandi Road, Kamalia | 3411835 | Rice Mills | 1994 | 1500 | 12 | Rice | 1 Sheller |
| 152 | Ali Sizing Industry Jhang Road | 2414891 | Sizing Of Yarn | 2002 | 4250 | 18 | Sizing Of Yarn | 600 M.Tons |
| 153 | Amir Sizing Industries Sammundri Road Gojra | 3511866 | Sizing Of Yarn | 1994 | 1150 | 15 | Sizing Of Yarn | 450 M.Tons |
| 154 | Frass Sizing Industries Mongi Rd Gojra | 3512946 | Sizing Of Yarn | 2000 | 1600 | 12 | Sizing Of Yarn | 500 M.Tons |
| 155 | Gohar Sizing Industries, Moongi Road, Gojra | 3510391, 3510491 | Sizing Of Yarn | 2004 | 4500 | 15 | Sizing Of Yarn | 500 M.Tons |

| Sr. No. | Name / Address of unit | Phone No. / Website | Industry | Estb. Year | Investment (Th.Rs.) | Emp | Product | Annual Installed Capacity |
|---------|---|-------------------------|------------------|------------|---------------------|------|---------------|---------------------------|
| 156 | Kamalia Sizing Industries Moh. Paghlanwala Kamalia | 3411220 | Sizing Of Yam | 1977 | 1200 | 16 | Sizing Of Yam | 500 M.Tons |
| 157 | Lasani Sizing Industries Samundri Road Gojra | 3511348 | Sizing Of Yam | 1994 | 1550 | 10 | Sizing Of Yam | 500 M.Tons |
| 158 | Macca Sizing Industries Jhona Shah Road Kamalia | 3413844, 3012544 | Sizing Of Yam | 2000 | 3500 | 12 | Sizing Of Yam | 450 M.Tons. |
| 159 | Madina Sizing Industries Shorkot Road | 2510489 | Sizing Of Yam | 1987 | 1160 | 14 | Sizing Of Yam | 600 M.Tons |
| 160 | Mashallah Sizing Industries Toba Road Kamalia | 0301-7283936 | Sizing Of Yam | 2005 | 5400 | 16 | Sizing Of Yam | 500 M.Tons |
| 161 | Pakistan Sizing Inds Jhang Road Gojra | 3512021 | Sizing Of Yam | 1996 | 1800 | 23 | Sizing Of Yam | 900 M.Tons |
| 162 | Punjab Sizing Industries Samundri Road Gojra | 3515142, 3512441 | Sizing Of Yam | 1987 | 1200 | 14 | Sizing Of Yam | 500 M.Tons |
| 163 | Irshad Soap Factory, Shorkot Road | | Soap & Detergent | 1995 | 950 | 4 | Soap | 100 Tons |
| 164 | Chaudhary Sugar Mills Ltd. 11 Km. Pensara Road Gojra | 3548233-5 | Sugar | 1991 | 1023937 | 1000 | Sugar | 8000 Tcd |
| 165 | Kamalia Sugar Mills Ltd. Adda Kot Khatran, Kamalia | 046-2510884, 2511784 | Sugar | 1976 | 954244 | 649 | Sugar | 12000 Tcd |
| 166 | Accord Textiles Ltd. Rajana Pir Mahal Road Kamalia | 3411777 | Textile Spinning | 1992 | 395100 | 497 | Cotton Yam | 18816 Spindles |

| Sr. No. | Name / Address of unit | Phone No. / Website | Industry | Estb. Year | Investment (Th.Rs.) | Emp | Product | Annual Installed Capacity |
|---------|---|-----------------------------------|------------------|------------|---------------------|-----|--------------|---------------------------|
| 167 | Chenab Ltd., (Spinning Unit) 5 Km Shorkot Road | 2511374, Wwww.Chenabgroup.Com | Textile Spinning | 1989 | 364670 | 588 | Cotton Yarn | 19200 Spindles |
| 168 | Mukhtar Spinning Mills Ltd. Nia Lahore Gojra | 560329-30, Wwww.Mukhartextile.Com | Textile Spinning | 1992 | 184097 | 290 | Cotton Yarn | 14200 Spindles |
| 169 | Nomi Spinning Mills Jhang Road Nia Lahore Gojra | 560388 | Textile Spinning | 1990 | 48100 | 44 | Cotton Yarn | 680 Rotors |
| 170 | Sahrish Textile Mills Ltd. Nia Lahore, Gojra | 560763 | Textile Spinning | 1992 | 192000 | 270 | Cotton Yarn | 13680 Spindles |
| 171 | Naveed Vermicillies, Gojra Road Toba Tek Singh | 0307-8417566 | Vermicillies | 1992 | 860 | 10 | Vermicillies | 450 M.Tons. |
| 172 | Waqas (Madina) Vermicillies Factory, Jhang Road | 511967 | Vermicillies | 2001 | 1500 | 12 | Vermicillies | 900 M.Tons |
| 173 | Younis Vermicillies Factory, Waryam Road Toba Tek Singh | 0342-5490700 | Vermicillies | 2005 | 1500 | 5 | Vermicillies | 500 M.Tons |

Source: Directorate of Industries, Punjab

LIST OF CONTACT NUMBERS

Directorate of Industries Punjab

| | |
|-----------------------------------|--|
| Director Industries, Punjab | Tel: +92 (42)-99211520-1 Fax: +92 (42)-99211522 dipunjab@gmail.com |
| Additional Director Industries | Tel: +92 (42)-99211531 +92 (42)-99212752 Fax: +92 (42)-99212753 |
| Joint Director (Development) | Tel: +92 (42)-99211526 |
| Senior Economist | Tel: +92 (42)-99211533 |
| Staff Economist | Tel: +92 (42)-99211534 |
| Deputy Director (Admin) | Tel: +92 (42)-99211528 |
| Deputy Director (Development) | Tel: +92 (42)-99211528 |
| Deputy Director (Planning) | Tel: +92 (42)-99211530 |
| Assistant Director (Admin) | Tel: +92 (42)-99211529 |
| Assistant Director (Planning) | Tel: +92 (42)-99211530 |
| Assistant Director (Statistics) | Tel: +92 (42)-99211524 |
| Assistant Registrar | Tel: +92 (42)-99211523 |
| Librarian | Tel: +92 (42)-99213010 |
| District Officer (E&IP), TT Singh | Tel: +92 (462)-516461 |

Other Relevant Departments

| Department | Contact |
|--|---|
| Secretary, Industries, Commerce & Investment Department, Govt. of the Punjab | Tel: +92 (42) 99210534-5 Fax: +92 (42) 99210536 |
| Punjab Board of Investment & Trade (PBIT) | Tel: +92 (42) 99205201 info@pbit.gop.pk |
| Small & Medium Enterprises Development Authority (SMEDA) | Tel: +92(42)-111-111-456 Fax: +92 (42) 36304926-7 info@smeda.org.pk |
| Punjab Industrial Estates Development and Management Company (PIEDMC) | Tel: +92 (42) 35297203-6 Fax: +92 (42) 35297207 info@pie.com.pk |
| Punjab Small Industries Corporation (PSIC) | Tel: +92 (42) 99200453 |

BIBLIOGRAPHY

- Punjab Development Statistics 2011, Bureau of Statistics, Government of the Punjab
- The Urban Unit, Planning & Development Department, Government of the Punjab.
- Technical Education and Vocational Training Authority
- Chief Inspector of Boilers, Directorate of Industries, Punjab
- Directorate of Agriculture, Crop Reporting Service, Punjab
- Chief Conservator of Forest Planning, Monitoring and Evaluation, Punjab
- Directorate General (Ext), Livestock & Dairy Development Punjab
- Directorate General Mines & Minerals, Punjab
- Punjab Small Industries Corporation
- Punjab Industrial Estates Development and Management Company
- Faisalabad Industrial Estates Development and Management Company
- Industries, Commerce & Investment Department, Government of the Punjab
- District Officers (Enterprise & Investment Promotion) as well as District Administration
- Export Processing Zones Authority
- Board of Investment, Government of Pakistan
- Website of Stat Bank of Pakistan
- Ministry of Commerce, Govt. of Pakistan.
- Directory of Industrial Establishments Punjab, Directorate of Industries, Punjab

