

# District Pre-Investment Study - 2012

---

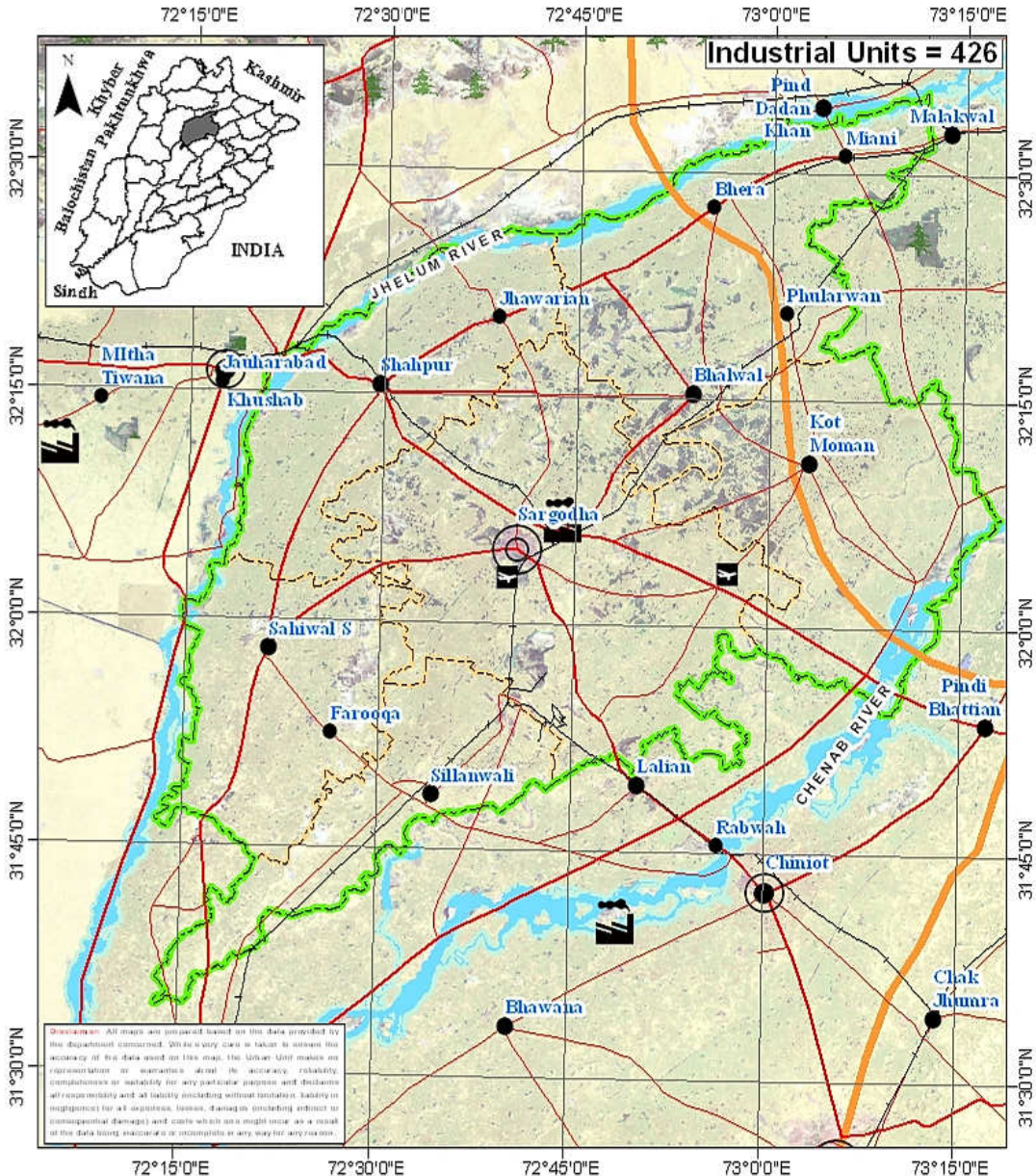
Sargodha



---

Directorate of Industries, Punjab  
Poonch House, Multan Road, Lahore.

# District Sargodha



## Director's Message

After spending past two years in Directorate of Industries, Punjab, I feel very privileged to be writing this message as Director Industries, Punjab.



This is the time we publish the 7<sup>th</sup> edition of the District Pre-Investment Studies of 36 Districts of Punjab, which has now become synonymous with our commitment to helping Industrialists, new entrepreneurs as well as Researchers. As Director Industries Punjab, I have seen much change, like:

- Relocation plan for the industrial units located within residential areas to industrial estates / positive areas declared by the District Governments.
- Adaptation of Boilers & Pressure Vessels Ordinance 2002.
- Conduct of Census of Manufacturing Industries.
- A scheme "Improvement and Up-gradation of Boilers Inspection Wing" has been approved by the Planning & Development Department, Government of the Punjab with the cost of Rs.10 Million.
- A Scheme "Sports Goods and Material Testing Laboratory" is under process in Planning & Development Department, Government of the Punjab. The estimated cost of the scheme is Rs.450 Million.
- The proposal for Capacity Building of Directorate of Industries Punjab is under process in Industries, Commerce & Investment Department, Government of the Punjab with the estimated cost of Rs.109.75 Million.
- We launch our website [www.doi.pitb.gov.pk](http://www.doi.pitb.gov.pk).

Looking ahead, we are focused on accelerating the execution of growth and promote industrial investment in the province. I am incredibly excited about this and truly believe the best of time for industrial investment is yet to come, Insha Allah.

**(Muhammad Siddique Sheikh)**  
Director Industries, Punjab

# Preface

Pre-investment studies for the districts in the Punjab were first published by the Directorate of Industries and Mineral Development, Punjab in the year 1979, with the prime objective of providing data which might interest private entrepreneurs and the framers of the Provincial and National Strategies in the industrial sector.

The second, third, fourth, fifth and sixth series of Pre-investment Studies for all districts of Punjab were published in 1983, 1992, 2002, 2006 and 2009 respectively. The present edition is seventh in the series.

This study basically updates the information contained in sixth series of district pre-investment studies. Efforts have been made to provide latest information collected through published sources, offices of the respective Government Departments/Agencies and District Offices of Industries Department. Quality addition of Industrial Policy Framework, recently promulgated Special Economic Zone Act 2012, Strategic Trade Policy Framework (2012-15) and Digital Maps by Urban Unit has improved these studies significantly.

The information has been updated in respect of population, manpower, production of agriculture crops, fruits, vegetables, livestock, forest resources, ores/minerals, infrastructural facilities such as technical/vocational training facilities, communication net-work, sub-soil water quality/effluent disposal

facilities, power/gas supply, tele-communication facilities, industrial estates, dry ports, industrial financing facilities, loaning scheme of PSIC, industrial policy, investment policy, fiscal incentives, Special Economic Zone Act 2012 and Strategic Trade Policy Framework (2012-15) etc. New policy measures regarding declaration of negative and specified positive areas have also been incorporated.

The study also includes information regarding existing industrial pattern, industry wise installed capacities and details regarding existing major industrial units in each district.

Effort has been made to identify various industries considering the availability of raw materials, skilled labour, linkage between industrial units and local/national/international demand. The suggested industries are, however, merely of indicative nature and it is advisable that prospective investors should conduct detailed feasibility report before making final decision for investment.

It is worthwhile to mention that industrial sector in Punjab has grown gradually from 6,223 industrial units in 1975 to 17,857 industrial undertakings in 2010. Sectoral growth has also been registered, resulting in substantial value addition. Value addition chain can be maximized by processing the agricultural industrial waste like rice husk, cotton stock, maize and corn cob. Herbal products is another untapped area. Live Stock, Dairy Development and poultry are fast growing sectors. Processing of food products can fetch handsome dividends. Currently information technology sector is growing by 39% annually in Pakistan. Fashion

industry is also developing rapidly. Similarly, chemical sector has lot to offer by utilizing the available mineral resources as raw material.

Issue of energy shortage can be addressed by dealing with power generation as an industry. Local as well as foreign investors have golden opportunity to set up power generation stations based on coal and other alternate fuels, under the captive power plants policy allowed in the newly promulgated SEZ Act, 2012. Punjab offers very good opportunity to the local as well as foreign investors to set up small, medium and heavy industries in variety of sectors. It has a growing market of over 90 million consumers, abundant manpower / labour force and cheap raw material with reasonably controlled law & order.

The Industries, Commerce & Investment Department has sufficient institutional frame work of attached and autonomous bodies to look after the industrial issues. Directorate of Industries, Small Industries Corporation (PSIC), Board of Investment (PBIT), Punjab Industrial Estates Development and Management Company (PIEDMC), Faisalabad Industrial Estates Development and Management Company (FIEDMC) have blend of professionals from the public as well as private sector. These legal entities are working in close coordination with the Chambers of Commerce and Industries systematically to promote industrialization and trade.

Development schemes regarding establishment of Industrial Resource Centre at the Directorate of Industries, setting up Sports & Material Testing Lab at EPZ, Sambrial and Industrial Safety Institute are under consideration with the Planning and Development

Department. Completion of these schemes will definitely help in promotion of industrialization process with enhanced industrial safety.

I must record my appreciation to Mr. Muhammad Akram Awan, Senior Economist, who effectively planned, coordinated and provided the guidance to his team members for completion of this study. Credit also goes to Mr. Muhammad Jamil Chishty, Staff Economist for his dedicated support rendered in the completion process of this study and Mr. Waseem Haider, Stenographer, for his tireless typing and composition work on computer.

I am grateful to all the District Officers, Enterprise & Investment Promotion who provided the relevant information of their respective districts for incorporating in pre-investment studies. I am also thankful to various Provincial Departments for supplying the required data to the Directorate of Industries. My special thanks are due to Dr. Nasir Javed, Project Director, Urban Unit for the provision of digital maps and the Punjab Printing Press.

Any suggestion for the improvement of the study will be welcomed.

Dec. 31, 2012

**(Muhammad Siddique Sheikh)**  
Director Industries, Punjab

# Contents

---

Section	Page
<b>District at a Glance</b>	<b>1</b>
<b>1. Geographical Conditions</b>	<b>3</b>
1.1 Brief Description of the District	3
1.2 Climate and General Soil Conditions	3
<b>2. Man-Power</b>	<b>5</b>
2.1 Total Population of the District	5
2.2 Man-Power Availability	6
2.3 Traditional Crafts	10
2.4 Geographical Indicators	10
<b>3. Natural Resources</b>	<b>11</b>
3.1 Agriculture	11
a) Main Crops	11
b) Main Fruits	12
c) Main Vegetables	12
3.2 Forests	13
a) Location of Forests and Area under Afforestation	13
b) Production of Timber and Fire-wood	14
3.3 Livestock Population	14
a) Animal Population	14
b) Poultry Population	15
c) Availability of Hides/Skins & Slaughter House Wastes	15
d) Production of Wool	15
3.4 Ores and Minerals	16

<b>4. Infrastructural Facilities</b>	<b>17</b>
4.1 Communication Network	17
a) Road Links	17
b) Rail Links	17
4.2 General Quality and Availability of Sub Soil Water	17
4.3 Effluent Disposal Facilities	17
4.4 Power Supply	18
4.5 Natural Gas Availability	18
4.6 Telecommunication Facilities	18
4.7 Social Infrastructural Facilities	18
4.8 Industrial Estates	19
4.9 Dry Port	20
4.10 Industrial Policy	20
4.11 Declaration of Negative Areas	25
4.12 Declaration of Positive Areas	30
4.13 Incentives for Investors to set a unit in EPZs	32
4.14 Pakistan's Investment Policy – Key Features	34
4.15 Industrial Financing Facilities	37
4.16 Salient Features of Loaning Scheme of PSIC	40
4.17 Salient Features of the SEZ Bill 2012	41
4.18 Strategic Trade Policy Frame Work (2012-2015)	43
<b>5. Existing Pattern of Industrial Development</b>	<b>49</b>
5.1 Description of Existing Industry	49
<b>6. Future Industrial Potential</b>	<b>51</b>
6.1 Agriculture	51
6.2 Livestock	52
6.3 Industry	53
6.4 Demand Based Industries	53
6.5 List of Identified Projects	53

<b>Annex</b>	<b>Page</b>
<b>Directory of Industrial Establishment</b>	<b>55</b>
<b>List of Contact Nos.</b>	<b>95</b>
<b>Bibliography</b>	<b>97</b>

## DISTRICT AT A GLANCE

1	Population (000 Numbers)	:	3,227
2	Area (Square Kilometres)	:	5,854
3	Population Density (per sq. km.)	:	551
4	Tehsils / Towns	:	Sargodha, Bhalwal, Sahiwal, Shahpur, Sillanwali and Kot Momin.
5	Main Crops	:	Sugarcane, Wheat, Rice, Maize, Cotton and Moong.
6	Main Fruits	:	Citrus, Guava and Mango.
7	Main Vegetables	:	Turnip, Onion, Cauliflower, Potato and Tomato.
8	Forest Resources (Area in Acres)	:	1,263
9	Mineral Resources	:	Nil
10	Total Metalled Roads (KM)	:	2,918.53
11	No. of Grid Stations	:	22
12	No. of Telephone Exchanges	:	80
13	Number of Industrial Units (Large Medium and Some Small Selected Sectors)	:	426
14	Type of Industrial Units	:	Agricultural Implements, Beverage, Biscuit, Ceramics Products, Chip/Straw Board,

Citrus Grading, Cold Storage, Confectionery, Cosmetics, Cotton Waste, Dairy Products, Domestic Hardware, Drugs & Pharmaceutical, Electric Goods, Fans/ Coolers, Flour Mills, Foundry Products, Glass & Glass Products, Hatchery, Leather Footwear, Packages, Paints & Varnishes, Paper & Paper Board, Pesticides & Insecticides, Plastic Products, Poultry Feed, PVC Pipe, Rice Mills, Soap & Detergents, Sodium Silicate, Sugar, Tannery, Textile Composite, Textile Spinning and Vegetable Ghee / Cooking Oil

## CHAPTER - I

### GEOGRAPHICAL CONDITIONS

#### 1.1 BRIEF DESCRIPTION OF THE DISTRICT

The district is bounded on the north by Jhelum district on the east by Chenab river beyond which lies the districts of Mandi Bahauddin and Hafizabad on the south by Jhang districts and on the west by Khushab district, separating the two districts by Jhelum river.

District Sargodha has an area of 5,854 Square Kilometres and comprises the tehsils of:

- a) Sargodha
- b) Bhalwal
- c) Sahiwal
- d) Shahpur
- e) Sillanwali
- f) Kot Momin

#### 1.2 CLIMATE AND GENERAL SOIL CONDITIONS

District Sargodha mainly comprises plains. There are a few small hills on Sargodha Faisalabad Road. River Jhelum flows on the Western and Northern sides and river Chenab on the eastern side of the district. The district has extreme hot and cold climate. The maximum temperature touches the

50°C in summer while the minimum temperature recorded is as low as freezing point in the winter.

## CHAPTER - II

### MAN POWER

#### 2.1 TOTAL POPULATION OF THE DISTRICT

According to Punjab Development Statistics 2011, total population of Sargodha district is 3,227 thousand persons out of which 1,678 thousand are males and 1,549 thousand are females. Density of population in the district is 551 persons per square kilometre.

Tehsil wise distribution of Urban and Rural population is given in Table-1

**TABLE-1**

#### Town-Wise Distribution of Urban & Rural Population

Town	Population (Thousand Nos.)		
	Urban	Rural	Total
Sargodha	555	796	1351
Bhalwal	148	408	556
Sahiwal	61	222	283
Shahpur	62	262	324
Sillanwali	28	284	312
Kot Momin	54	347	401
<b>Total</b>	<b>908</b>	<b>2319</b>	<b>3227</b>

Source: Punjab Development Statistics, 2011

## 2.2 MAN POWER AVAILABILITY

As regards availability of skilled labour, there are 22 technical / commercial / vocational institutions (15 for men, 7 for women) imparting training in various trades e.g. mechanical, electrical, auto-engineering, welding, wood working and commerce. Vocational institutions for women impart training in hand/machine embroidery, stitching and knitting, Elementary Food Preservation etc. In all about 6,701 technicians/artisans/workers are trained every year. The details are given in Table-2.

**TABLE - 2**

### Commercial and Technical Institutions

Sr #	Name & Description of Commercial / Technical Training Institutions	Types of Training Courses Offered	Duration of Course	Average No of Students Enrolled / Session
<b>For Men</b>				
1	Govt. Institute of Commerce, Kot Moman Road, Bhalwal.	Certificate in Computer Application, B.Com D.Com.	6 to 24 Months	505
2	Govt. Institute of Commerce, Shahpur Sadar, Riaz-ul-Khatab Colony, Sargodha.	B.Com Degree D.Com.	24 Months	393

3	Govt. College of Technology, PAF Road, Sargodha	DAE (Civil, Mechanical, Electrical, Electronics), Microsoft IT Academy Tele-Comm.	3 to 36 Months	2428
4	Govt. Technical Training Institute, 47 NB, Sargodha.	Ref. & AC, Electrical, Draftsman (Civil, Mech), Electrician, Radio / TV, Civil Surveyor, Auto Cad, HV & AC	3 to 24 Months	497
5	Govt. Technical Training Institute, Sillanwali Road, Near Hilal-e-Ahmar Hospital, Sargodha	Auto Mach, Draftsman (Mech), Electrician, Auto Cad, Fitter, Machinist, Radio / TV, Welder, Plumber	3 to 24 Months	550
6	Agricultural Machinery Training School, Chak No.38/NB, Sargodha	Tractor & Auto Mech., Tractor Operator	6 to 12 Months	67
7	Govt. Technical Training Centre (DMTC) Sillanwali Sultanabad, Near Agriculture Bank, Sargodha.	Welder, Turner, Wireman,	6 Months	67

8	Govt. Technical Training Centre (VTC) (PSIC), Shahpur	Auto & Farm, Wireman	6 Months	51
9	Govt. Technical Training Centre, Mishal Town, Near Govt. Special Education Centre, Bhagtian Wala Road, Kot Momin, Sargodha.	Electrician, Welder, Motor Winding.	6 Months	90
10	Govt. Technical Training Centre, Mutafaabad, St. No.3, Farooq Road, Sahiwal.	Electrician, Plumber, Heating Ventilation & AC.	6 Months	90
11	Govt. Technical Training Institute, Chak No.6/NB, Bhalwal.	Ref. & Air Cond. Electrician, Auto Mechanic, Radio & TV Certificate in Computer Application.	6 to 24 Months	70
12	Govt. Technical Training Institute, Bhera Near Gunj Mandi Gate, Bhera.	Electrician, Radio & TV Welder, HVACR, Certificate in Computer Application.	6 to 24 Months	126
13	Govt. Institute of Commerce, Gulberg Colony, Sillanwali.	D.Com.	24 Months	70

14	Govt. Institute of Commerce, Jhang Road, Sahiwal.	D.Com.	24 Months	60
15	Govt. College of Commerce, Faisalabad Road.	D.Com. B.Com. Degree. M.Com	24 Months	863
<b>For Women</b>				
16	Govt. Institute of Commerce, 82-C, Satellite Town, Sargodha	D.Com	24 Months	158
17	Govt. Vocational Training Institute, Mohallah Chup Shah, TMO Shahpur Sadar, Sargodha	Vocational Diploma, Tailoring, Beautician.	6 to 24 Months	70
18	Govt. Vocational Training Institute, Zahoor Hayat Colony, Hayat Pur Road, Bhalwal.	Vocational Certificate & Diploma, Tailoring, Beautician, Certificate in Computer Application.	6 to 24 Months	101
19	Govt. Vocational Training Institute, Block No.13, Sargodha.	Vocational Diploma, Beautician, Tailoring, Metric Tech, Certificate in Computer Application.	6 to 24 Months	198

20	Govt. Vocational Training Institute (RMGTC), 38-D Block, Satellite Town, Sargodha	Dress Designing & Making, Beautician.	6 to 12 Months	37
21	Govt. Technical Training Centre, Mohallah Shahi Masjid, Kot Momin.	Tailoring, Machine Embroidery, Certificate in Computer Application.	6 Months	120
22	Govt. Technical Training Centre, Near Boys Higher Secondary School, Sahiwal.	Tailoring, Machine Embroidery, Elementry Food Preservation	6 Months	90

Source: TEVTA

## 2.3 TRADITIONAL CRAFTS

There is no mentionable traditional craft in the district.

## 2.4 GEOGRAPHICAL INDICATIONS

The Project Director (Geographical Indications), Industries, Commerce & Investment Department, Government of the Punjab has identified the following Important Geographical Indications in the district:

- Khes & Darri
- Salarah (Shawal)
- Bakelite Products

## CHAPTER - III

### NATURAL RESOURCES

#### 3.1 AGRICULTURE

##### a) Main Crops

Sugarcane, Wheat, Rice, Maize, Moong and Cotton are the main crops grown in the district. Production of these crops during the period 2008-09 to 2010-11 is given in Table - 3.

**TABLE-3**

**Production of Main Crops  
(2008-09 to 2010-11)**

Crop	Production (Th. M.Tons)		
	2008-09	2009-10	2010-11
Sugarcane	2816.51	2601.2	3356.82
Wheat	595.85	504.95	565.39
Rice (cleaned)	83.15	80.97	63.9
Maize	81.7	90.3	70.9
Cotton (000 Bales)	14.93	21.74	21.32
Moong	1266	1249	913

Source: Directorate of Agriculture, Crop Reporting Service, Punjab

Besides, Ground Nut, Jawar, Bajra, Guar Seed, Sunflower, Mash, Masoor, Gram and Oil Seed such

as Rape / Mustard are also grown in minor quantities in the district.

**b) Main Fruits**

Citrus, Guava and Mango are main fruits grown in the district. Production of these fruits during the period 2008-09 to 2010-11 is given in Table - 4

**TABLE-4**

**Production of Main Fruits  
(2008-09 to 2010-11)**

Fruit	Production (M.Tons)		
	2008-09	2009-10	2010-11
Citrus	985094	1031051	865796
Guava	15480	16941	16027
Mango	1347	1202	1079

Source: Directorate of Agriculture, Crop Reporting Service, Punjab

Besides, Jaman, Pear, Date, Pomegranate, Phalsa and Almond are also grown in minor quantity in the district.

**c) Main Vegetables**

Turnip, Onion, Cauliflower, Potato and Tomato are main vegetables grown in the district. Production of these vegetables during the period 2008-09 to 2010-11 is given in Table - 5

**TABLE-5**

**Production of Main Vegetables  
(2008-09 to 2010-11)**

Vegetable	Production (M.Tons)		
	2008-09	2009-10	2010-11
Turnip	17173	18065	16796
Onion	7577	7375	8734
Cauliflower	5795	6009	7017
Potatoes	1587	2501	7573
Tomato	3252	3494	5095

Source: Directorate of Agriculture, Crop Reporting Service, Punjab

Besides, Ladyfinger, Carrot, Bottle Gourd, Bitter Gourd, Chillies, Peas and Garlic are also grown in the district in minor quantities.

### 3.2 FORESTS

#### a) Location of Forests and Area under Afforestation

An area of 1,263 Acres is under forests, which is about 0.09 % of the total area of the district. There is also linear plantation of 2,595 Km alongside the roads/rails/canals in the district. Trees grown in the area are kikar and shisham.

### b) Production of Timber and Firewood

The production of Timber and Fire-Wood in the district during the period 2008-09 to 2010-11 is given in Table 6.

**TABLE-6**

**Production of Timber & Firewood  
(2008-09 to 2010-11)**

Year	Production (Cubic Meter)	
	Timber	Firewood
2008-09	3541.94	-
2009-10	5664.00	950.00
2010-11	5764.00	-

Source: Forestry, Wildlife and Fisheries Department

### 3.3 LIVESTOCK POPULATION

#### a) Animal Population

The animal population of the district is given in Table - 7.

**TABLE - 7**

**ANIMAL POPULATION**

Animals	Population (Th Heads)
Goats	675
Cattle	696
Sheep	143
Buffaloes	799

Source: Livestock & Dairy Development Department.

**b) Poultry Population**

As per Punjab Development Statistics 2011, there are 1137 broiler and 102 layer poultry farms in the district having rearing capacity of 36512 and 536 thousand birds respectively. There are also 2 breeding farms having rearing capacity of 485 thousand birds.

**c) Availability of Hides / Skins and Slaughter House Wastes**

As per Punjab Development Statistics 2011, 605300 animals were slaughtered in recognized / un-recognized slaughter houses in the district during the year 2009-10, which is a reasonable estimate of the availability of hides and skins in the district.

The availability of slaughter house by - products is estimated as under:-

Blood	219.11 M.Tons
Bones	1042.93 M.Tons
Tallow	204.59 M.Tons

**d) Production of Wool**

The sheep population of 143 thousand heads in the district is expected to yield about 143 M.Tons of coarse wool annually.

### **3.4 ORES AND MINERALS**

There is no major mineral in the district.

## **CHAPTER - IV**

### **INFRASTRUCTURAL FACILITIES**

#### **4.1 COMMUNICATION NETWORK**

##### **a) Road Links**

The district has a total metalled road-length of 2918.53 Kilometres. The District is linked with Mianwali, Faisalabad, Bhakkar, Jhang and Mandi Bahauddin districts through metalled road.

##### **b) Rail Links**

The district Sargodha is linked with Khushab, Mandi Baha-ud-Din and Chiniot Districts through railway net-work.

#### **4.2 GENERAL QUALITY AND AVAILABILITY OF SUB-SOIL WATER**

The sub soil water of the district, except in the areas along the banks of rivers Jhelum & Chenab and major part of Bhalwal tehsil, is brackish and is unfit for human consumption and industrial use.

#### **4.3 EFFLUENT DISPOSAL FACILITIES**

The locations of existing nullahs and drain in the district is suitable for effluent disposal. However,

prior written permission from Irrigation and Power Department, Government of the Punjab is necessary for discharge of effluent in these nullahs/drains.

#### **4.4 POWER SUPPLY**

There are 22 grid stations in the district ranging in capacity from 66 KV to 132 KV and one grid station of 220 KV capacity is under installation in the district.

#### **4.5 NATURAL GAS AVAILABILITY**

Natural gas is available at almost major cities of the District Sargodha.

#### **4.6 TELE-COMMUNICATION FACILITIES**

There are 80 telephone exchanges operating in the district, ranging in capacities from 200 lines to 14215 lines. Cellular phone services are available in the district.

#### **4.7 SOCIAL INFRA-STRUCTURAL FACILITIES**

Social infra-structural facilities available in the district are given in Table - 8.

TABLE - 8

## SOCIAL INFRA-STRUCTURAL FACILITIES

Tehsil	Primary / Middle / high / higher secondary School	College	Hospital	Police station	Railway stations	Post office	Banks
Bhalwal	790	6	2	5	14	13	32
Sargodha	728	11	10	11	18	39	59
Shahpur	269	3	2	3	2	6	11
Sillanwali	236	2	1	2	4	3	9
Sahiwal	306	3	1	2	-	7	14
Kot Momin	-	2	-	4	-	6	12
Total	2329	27	16	27	38	74	137

Source: Punjab Development Statistics 2011 / Respective District Offices.

According to Higher Education Commission there is University of Sargodha in the public sector

#### 4.8 INDUSTRIAL ESTATE

Punjab Small Industries Corporation has established an industrial estate in the district at Bhagtanwala in the year 1980-81. Details regarding plots, their sizes and availability are given in Table-9.

**TABLE - 9****SIZES AND AVAILABILITY OF PLOTS IN THE INDUSTRIAL ESTATE**

Name of Industrial Estate	Size of Plots (Acres)	Total No. of Plots	Allotted Plots	Vacant Plots
Small Industrial Estate Sargodha	4 Kanal	29	29	Nil
	2 Kanal	36	36	Nil
	1 Kanal	67	67	Nil
	10 Marla	72	72	Nil
	5 Marla	50	50	Nil

Source: Punjab Industrial Estates Development and Management Company

At present one industrial estate is being setup by Punjab Industrial Estates Development and Management Company over an area of 400 Acres in Tehsil Bhalwal.

**4.9 DRY PORT**

There is no dry port in the district.

**4.10 INDUSTRIAL POLICY**

- Foreign investors are permitted to hold 100% of the equity of industrial projects without any permission of the Government.
- No prior Government sanction is required for establishment of an industry outside Ex-

Municipal Territorial Limits of Town Committees / Municipal Corporation irrespective of its cost and size except the following covered under schedule 'C':-

- a. Arms & Ammunition.
  - b. Security Printing Currency & Mint.
  - c. High Explosives.
  - d. Radio Active Substances.
  - e. Alcoholic Beverages or Liquors.
1. No industrial unit mentioned in Schedule-A of the notification No. AEA-III-4-3-9/91, dated 30.09.2002 or industrial unit exceeding a total cost of Rs. 100.00 million shall be set up within 10 miles (16 Kms) of international border:

**List of Manufacturing Industries**

- a) Basic Metal Industry.
- b) Petro-Chemical Industries (Excluding Products Industries).
- c) Large size Machine Tool Factories (Limit of Investment to be determined).
- d) Heavy Foundry Works.
- e) Heavy Electric Complexes.
- f) Heavy Mechanical Complexes.
- g) Electronics Industries.
- h) Major Vehicle Assembly Plants.
- i) Ordnance Factories.
- j) Explosives, Nitric acid and Sulphuric acid plants.
- k) Vehicular Tires and Tubes Industries.

- l) Locomotives and Railway Carriage manufacturing plants.
  - m) Government Mint.
  - n) Security Printing Press involved in whole time printing of sensitive documents / currency notes.
  - o) Manufacture of optical glass and optics.
  - p) Nickle cadmium battery industries.
  - q) Nuclear / Separation Plants.
  - r) Large Power Generating Stations.
  - s) Large oil Storage units.
  - t) Oil refineries.
2. No industrial unit shall be set up in areas affected by flood flowing transversely in the strip of one mile of either side across the Grand Trunk Road from Shahdara Town to Muridke Town, without prior permission of the Provincial Government.
3. According to the notification No. AEA-III-3-5/2003 (Vol-III), dated 06.12.2006, “no new sugar mill shall be setup and no enlargement in capacity of the existing sugar mills is allowed in the Province”.
4. Each district Government may declare “negative area” for industry. Such “negative area” be determined by a District Committee after consultation with all stake-holders in light of general policy guidelines issued by the Industries, Commerce & Investment

Department and exemptions allowed under Schedule 'B' of this Notification as under:

**List of Service Industries**

- a) Furniture (excluding Band Saw) and also excluding storing Timber / Wood.
- b) Tailoring/ Readymade garments.
- c) Laundry / Dry Cleaning.
- d) Bakery (excluding confectionery).
- e) Syrups ( excluding squashes)
- f) Cosmetics.
- g) Service workshop.
- h) Cereal Products like vermicilles.
- i) Candles making.
- j) Printing and Packaging.
- k) Hand loom carpet weaving.
- l) Hotels.
- m) Bidi manufacturing.
- n) Handmade shoes / shoe repairing workshop.
- o) Spooling and thread balls.
- p) Small Hosiery units employing not more than 10 workers.
- q) Atta Chakkies.
- r) Installation of Chaff cutters.
- s) Cotton Grading.
- t) Other small industrial undertakings which do not fall under the Sixth schedule of the Punjab Local Government Ordinance, 2001.

“Other small industrial undertakings” would mean an industrial undertaking in which the total fixed assets (including the cost of land)

do not exceed Rs.1.0 million (Rupees one million).

5. No industrial unit mentioned in Schedule 'C' of this Notification shall be set up anywhere in the Punjab without prior approval of the Government.
6. The Government reserves the right to refuse establishment / enhancement of any industrial undertaking which is in contravention of the public interest, ecology or any other law / rules for the time being in force.
7. The Government may relax any of the provisions of this notification in case of a particular unit or industry or class of units or industries.
8. NOC from Environment Protection Department, Govt. of the Punjab is required for setting up new Industries.
  - Tourism has been given the status of industry in accordance with Ministry of Industries & Production Circular No. 1-129/99-INV-IV dated 2<sup>nd</sup> August 1999.
  - The Housing and Construction Sector has also been declared as industry (Finance Division Notification No. 10(10)/IF-11/98, dated 07.04.1999 and 04.06.1999.

- In accordance with Government notification No. 3(2)/97-INV-IV dated 05.05.1997, Computer Software and Information Technology (IT) have been declared as Industry.

#### 4.11 DECLARATION OF NEGATIVE AREAS

In pursuance of the Clause 4 of the Location Policy notified on 30-09-2002, by the Industries Commerce & Investment Department, Government of the Punjab, the District Govt. Sargodha has declared the following negative areas:-

##### *Tehsil Sargodha*

i) 10 km Radius from bypass on the Roads as under:-

- (a) Sargodha - Faisalabad Road.
- (b) Sargodha - Lahore Road.
- (c) Sargodha - Bhalwal Road.

ii) 05- Km radius from New octori post of M.C. Limits on the following roads:-

- (d) Sargodha - Gujrat Road
- (e) Sargodha - Khushab Road.

iii) 05- Km Radius from Old octori Post of M.C. Limits on the following roads:-

- (f) Sargodha - Jhang Road.
- (g) Sargodha - Silanwali Road.
- (h) Sargodha - Shaheenabad Road.

### ***Thehsil Bhalwal***

#### **i) Bhalwal City**

For (defunct Municipal Committee) Bhalwal City within the radius of 7-KMs from the Committee Chowk Bhalwal.

#### **ii) Bhera**

For (Defunct Municipal Committee) C.O. Unit Bhera within the radius of 05 Km from the “Chak Wala Gate” Bhera.

#### **iii) Miani**

For (Defunct Town Committee) C.O Unit Phularwan within the 4-Kms from the centre of the Ghala Mandi Phularwan.

#### **iv) Phularwan**

For (Defunct Town Committee) C.O Unit Phularwan within the 4-kms from the centre of the Ghala Mandi Phularwan.

***Tehsil Sillanwali***

Five km from the office of the Defunct Town Committee towards each side.

***Tehsil Sahiwal***

i) Sahiwal Town.

1.0 Km Radius from Katchery/T.M.A Office of Sahiwal Town.

ii) Farooka Town.

5.0 Km Radius from Boys High School Farooka Town.

***Tehsil Kotmomin***

- a) Mateela - Bhaghtanwala Road, 4.6 km.
- b) Moazzamabad Road, 5.7 Km.
- c) Bhalwal road. 5.0 Km.
- d) Salam Road 9.0 Km.
- e) Midh Road 7.0 Km.
- f) Bhabra Road, 9.0 Km.

***Tehsil Shahpur***

i) Shahpur Saddar

For the defunct town committee Shahpur Saddar the parameters of line for establishment

of new Industries may be from the radius of 5 Kms at Sargodha Khushab Road, Shahpur Saddar to Luck More road and Shahpur to Bhera road from the Office of TMA Shahpur.

ii) Shahpur City

For the defunct town committee Shahpur city the parameters of line for establishment of new industries should from the radius of 10 Kms from the office of Co unit Shahpur city at Sargodha Khushab road.

iii) Jhawarian

For the defunct Town Committee Jhawarian/ Co unit Jhawarian new Industries should be established from the parameters of radius 5 Kilometers from the chowk Shahpur and Jhawarian at Shahpur Bhera Road.

In addition to above, it is further ordered as under:-

- a) The laws of local Government and Rural Development Department and Environmental Protection Department shall remain applicable. Both the departments shall ensure compliance of their respective laws.
- b) The Rules of highway department will also be observed strictly and it will be 220 ft.

from the road on highway whereas it will be 60ft. for other roads. Moreover no Industry shall be established in flood affected areas.

- c) No Industrial unit will be established at a distance of 6.1 meter of line & life part of electricity system and within 50 ft. on either sides of high pressure gas lines. Moreover the areas around the strategic areas/installation will also be prohibited for industries.
- d) The existing Industrial estates will be treated as exempted from the above mentioned Negative area for the establishment of Industrial undertakings.
- e) The Industrial units already functioning/under installation within the proposed “Negative Area” should be considered as exempted. However the regularization of the unit shall be made by the Government.
- f) The prior permission/clearance of the District Government for the establishment of new Industrial undertaking will be mandatory.
- g) All other clauses of the industrial policy notified by the Industries, Commerce & Investment Department vide Notification

NO.A:A-III-3-9/91 dated 17.09.2002, shall remain applicable and the D.O(E&IP)will monitor its implementation in letter and spirit.

- h) No tannery unit/Industrial unit causing pollution/Public nuisance will be established in the whole District without prior approval from the appropriate authority of the District Government.
- i) The above mentioned “Negative Area” will be reviewed after five (5) years or on receipt of general Industrial Policy / instruction from the Provincial Government from time to time.

#### **4.12 DECLARATION OF SPECIFIED POSITIVE AREAS**

Vide the Finance Act, 2008, the Government of Pakistan has enacted a new section “23A” in the Income Tax Ordinance 2001. The Section “23A” is reproduced below:-

“First year allowance.- (1) Plant, Machinery and equipment installed by any industrial undertaking setup in specified rural and under developed areas, and owned and managed by a company shall be allowed first year allowance in lieu of

initial allowance under Section 23 at the rate specified in Part II of the third schedule against the cost of the “eligible depreciable assets” put to use after July 1<sup>st</sup>, 2008.

(2) The provision of Section 23 except sub-sections (1) and (2), thereof, shall mutatis mutandis apply.

The Federal Government may notify “Specified areas” for the purpose of sub-section(1)”

In pursuance of the above mentioned notification District Government Sargodha has identified and approved the following specified positive areas for setting up industrial undertakings:

- a) Khichiwala to Yateem Wala road.
- b) Minchinabad to Meclod Gunj & Mandi Sadiq Ganj road.
- c) Dahranwala to Fortabbas road.
- d) Chak Madrissa to Jandwala road.
- e) Faqirwali to Dahranwala road.
- f) Bahawalnagar to Head Jalwala road.
- g) Burgee to Minchinabad Tehsil along with Fordwah Canal for fish processing.

#### **4.13 INCENTIVES FOR INVESTORS TO SETUP A UNIT IN EPZs**

- a) According to EPZs Authorities, following incentives are available in the Export Processing Zones
1. 100% ownership rights.
  2. 100% repatriation of capital & profits.
  3. No minimum or maximum limit for investment.
  4. Duty free imports of machinery, equipment & material.
  5. No sales tax on input goods including electricity & gas bills.
  6. Obsolete/old machinery can be sold in domestic market of Pakistan after payment of applicable duties & taxes.
  7. Freedom from National import restrictions.
  8. Foreign exchange control regulation of Pakistan not applicable.
  9. Defective goods/waste can be sold in domestic market after payment of applicable duties, maximum upto 3% of total value of export.
  10. Duty free vehicle allowed under certain conditions. After 5 years of use, vehicles can be disposed off in domestic market on payment of duty on depreciated value.

11. Domestic market of Pakistan available on same conditions as for imports from other countries.
  12. Units operating in EPZs can undertake sub-contracting for units of tariff area subject to payment of duty and taxes on value addition only.
  13. Only EPZA is authorized to collect Presumptive tax at the time of export of goods which would be final tax liability.
  14. EPZ units allowed to supply goods to Custom manufacturing bonds.
  15. Production oriented labour laws to be solely regulated by the Authority.
  16. EPZ manufacturer will be treated at par with bonded manufacturers in tariff area for any future incentives to be announced for exporters.
  17. Relief from double taxation subject to bilateral agreement.
- b) Facilities to Investors for setting up a unit in EPZs of Pakistan.
1. One window service and simplified procedure.
  2. All infrastructural facilities like water, electricity, gas, telex, fax and telecommunication system are made available by EPZA.
  3. Skilled & un-skilled labour available in abundance.

4. Sub-contracting without limit on variety and quantity is allowed outside the zone as well as within the zone.
5. The garment manufacturing units located in Export Processing Zones are eligible to participate in auction of quotas.
6. GSP concessions given by various countries to imports from Pakistan are available to the manufacturers in the zone.
7. Peaceful, secure and environmentally protected / pollution free work area.
8. Inter-unit transfer of finished goods among exporting units allowed.

#### **4.14 PAKISTAN'S INVESTMENT POLICY - KEY FEATURES**

##### ***General***

- The investment policy is liberal and business friendly as it has been designed in consultation with businessmen, investors and representative forums as well as the Multinational Companies (MNCs).
- It provides equal investment opportunities for both domestic and foreign investors.
- All economic sectors open for FDI (Foreign Direct Investment).
- 100% foreign equity allowed.
- No government sanction required.
- Foreign investment on repatriable basis is allowed in all economic sector including

manufacturing, agriculture, services, infrastructure and social sectors.

- Foreign investment in Agriculture projects allowed on joint-venture basis by associating minimum local equity of 40%.
- Remittance of Royalty, Technical & Franchise Fee, Capital, Profits, Dividends allowed.
- Minimum foreign equity for non-manufacturing including service sectors has been reduced from \$ 0.3 to \$ 0.15 million. In Agriculture, infrastructure and social sectors, it is \$ 0.3 million.

### ***Tariff and Tax Incentives***

- To keep Pakistan competitive in international tariff 5% customs duty has been allowed on import of plant and machinery which is not manufactured locally.
- Sales tax 0% across the board.
- 0% duty on import of raw material for export industry.
- 0% duty on import of agriculture machinery.
- Tax relief in shape of Initial Depreciation Allowance (IDA) has been provided as 50% of machinery cost across the board.
- Tax relief has also been provided for expansion and Balancing, Modernization & Replacement (BMR) in existing industries.

**Policy Package of Pakistan**

Policy Parameters	Mfg. Sector	Non-Manufacturing Sectors		
		Agriculture	Infrastructure & Social	Services including IT & Telecom Services
Govt. Permission	Not required except for specified industries*	Not required except specific licences from concerned agencies.		
Remittance of capital, profits, dividends, etc.	Allowed	Allowed		
Upper Limit of foreign equity allowed	100%	100%	100%	100%
Minimum Investment Amount (M \$)	No	0.3	0.3	0.15
Customs duty on import of PME**	5%	0%	5%	0-5%
Tax relief (IDA***, % of PME cost)	50%	50%		
Royalty & Technical Fee	No restriction for payment of royalty & technical fee.	Initial lump-sum up to \$100,000 Max Rate 5% of net sales - Initial period 5 years		

\* Specified Industries:

- i) Arms and ammunitions
- ii) High Explosives
- iii) Radioactive substances

- iv) Security Printing
- v) Currency and mint

\*\* PME = Plant, Machinery and Equipment

\*\*\* IDA = Initial Depreciation Allowance

#### **4.15 INDUSTRIAL FINANCING FACILITIES**

Following Financial Institutions in the country are providing various types of fixed investment industrial financing in the foreign and local currency to the industrial sector for establishment of new industrial units as well as for Expansion, Balancing, Modernization and Replacement (BMR) of existing industrial units within the frame-work of industrial/financial policies of the Government of Pakistan.

- 1 AlBaraka Bank (Pakistan) Limited.
- 2 Allied Bank Limited.
- 3 Askari Bank Limited.
- 4 Bank Alfalah Limited.
- 5 Bank Al-Habib Limited.
- 6 Bank Islami Pakistan Limited.
- 7 Barclays Bank PLC.
- 8 Burj Bank Limited.
- 9 Citi Bank N.A.
- 10 Deutsche Bank A.G.
- 11 Dubai Islamic Bank Pakistan Limited.
- 12 Faysal Bank Limited.

- 13 First Women Bank Limited.
- 14 Habib Bank Limited.
- 15 Habib Metropolitan Bank Limited.
- 16 HSBC Bank Middle East Limited.
- 17 Industrial and Commercial Bank of China
- 18 Industrial Development Bank of Pakistan.
- 19 JS Bank Limited.
- 20 KASB Bank Limited.
- 21 MCB Bank Limited.
- 22 Meezan Bank Limited.
- 23 National Bank of Pakistan.
- 24 NIB Bank Limited.
- 25 Oman International Bank S.A.O.G.
- 26 S.M.E. Bank Limited.
- 27 Samba Bank Limited
- 28 Silk Bank Limited.
- 29 Sindh Bank Limited.
- 30 Soneri Bank Limited.
- 31 Standard Chartered Bank (Pakistan)  
Limited.
- 32 Summit Bank Limited
- 33 The Bank of Khyber
- 34 The Bank of Punjab
- 35 The Bank of Tokyo-Mitsubishi Limited.
- 36 The Punjab Provincial Cooperative Bank  
Limited.

- 37 United Bank Limited.
- 38 Zarai Taraqati Bank Limited.

---

Source: State Bank of Pakistan

***List of Development Financial Institutions (DFIs)***

- 1 Bankers Equity Limited.
- 2 House Building Finance Company Limited.
- 3 Pak Brunei Investment Company Limited
- 4 Pak-China Investment Company Limited.
- 5 Pak Oman Investment Company Limited.
- 6 PAIR Investment Company Limited.
- 7 Pakistan Kuwait Investment Company Limited.
- 8 Pak-Libya Holding Company Limited.
- 9 Saudi Pak Industrial & Agricultural Investment Company Limited.

---

Source: State Bank of Pakistan

Besides the financial institutions mentioned above a number of Leasing Companies, Modaraba Companies, Investment Banks are also providing financing facilities to the industrial sector. Punjab Small Industries Corporation also extends financial assistance to the small/cottage industrial units.

#### **4.16 SALIENT FEATURES OF LOANING SCHEME OF PSIC**

Punjab Small Industries Corporation (PSIC) is a body corporate enacted in 1973. One of core functions of PSIC is financial assistance programme for prospective entrepreneurs, skilled youth, artisans and craftsmen all over the Punjab. The priority sectors are as under:

- Service Industries.
- Agro / Agro Support Industries.
- Food Processing Industries.
- Export Oriented Industries.
- Import Substitution Industries.
- Information Technology (IT) Project.
- Handicraft Industry.
- Women Enterprises.

PSIC started credit assistance programme during 1984 and completed 13 schemes up till now. An amount of Rs. 4079 Million has been disbursed to 19,580 entrepreneurs in 36 Districts of Punjab with the recovery rate of 88% that indicates proper utilization of loans.

The maximum loan limit is Rs.3 Million with debit equity ratio of 60:40. The credit assistance facility available for new projects, BMR and Working Capital. The markup rate varies from 0% to 12%.

The repayment period of loan is from 3 years to 6 years with grace period of 3 months to 6 months.

Recently, Government of Punjab has provided an amount of Rs. 2000 Million for disbursement through Service Provider Organization i.e. M/s Akhuwat to un-employed and skilled persons of PVTC, TEVTA, SANATZAR's of Social Welfare Department or other unemployed youth having good business plan.

Up till now, M/s Akhuwat has disbursed an amount of Rs. 1650.00 Million to 94,960 poor household in 33 vocations with average loan size of Rs. 17,382 in Punjab through its 142 offices in 30 districts of the Punjab.

To promote the traditional handicrafts in Punjab, PSIC has also launched dedicated credit assistance schemes for the craftsmen at subsidized markup rates. These craftsmen have also been provided marketing facilities through Pakistan Handicrafts Shops.

#### **4.17 SALIENT FEATURES OF THE SEZ BILL 2012**

The Law of SEZ has been made to meet the global challenges of competitiveness to attract FDI. The Law/bill will allow to create industrial clusters with liberal incentives, infrastructure, investor facilitation services to enhance productivity and reduce cost of doing business for economic

development and poverty reduction. The Law further envisages to reduce processes through SEZ in Pakistan. The establishment of SEZs will attract both domestic as well as international investors. The SEZ would play a pivotal role in the economic development of Pakistan as has been witnessed in case of China, Malaysia, Thailand and other states.

It extends to the whole of Pakistan and overrides other laws (anything contrary);

- All SEZ whether Public, Public-Private or Private-Private to be governed under this Act;
- The Board of Approval (BOA) headed by the Prime Minister of Pakistan with the Minister for Finance as the Vice Chairman shall meet as frequently as required but not less than twice a year and decisions shall be taken by a majority of the total membership present and voting;
- SEZs will have exemption from customs duties & taxes for all Capital Goods imported into Pakistan for the development , operations and maintenance of a SEZ;
- Exemption from all taxes on income accruable in relation to the development and operations of the SEZ for a period of ten years, starting from the date of signing of the Development Agreement.
- Zone Enterprises have exemption from custom duties etc. on imports of Capital Goods;

- Exemption from taxes on income for a period of 10 years starting from the date the Development certifies that the Zone Enterprise has commenced commercial operations in the relevant SEZ;

There is no limit to the economic potential of Pakistan. The challenge is to create the enabling environment in which this can be realized. Special Economic zones bill is a step towards the economic stability in the country.

#### **4.18 STRATEGIC TRADE POLICY FRAME WORK (2012-2015)**

The government unveiled on 29 January, 2013 a medium term (2012-2015) Strategic Trade Policy Framework, setting a cumulative export target of \$95 billion for three years. The framework, the second announced by the federal government will be implemented with a funding of Rs. 26.14 billion. In the first year, Rs.5 billion will be spent on providing subsidies and support to identified sectors.

The focus of the policy is on promoting regional trade and regulatory efficiency, promoting agro-processed exports, increasing exports from less developed regions, revamping export promotion agencies, increasing green exports, enhancing role of women in exports and pursuing product and market development and diversification.

The salient features of the policy include institutional interventions, export development initiatives and regulatory amendments. The policy, offers cash assistance to 14 sectors along with 19 regulatory frameworks, including ban on products as a protective measure against environmental and health hazards. The new framework is designed to provide assistance only to the non-textile sectors.

***Institutional Measures:*** The government will setup institutions like an Export-Import (Exim) Bank, Pakistan Land Port Authority; Leather Export Promotion Council and a Services Trade Development Council.

***Export Development:*** Major initiatives in the Policy included allowing mark-up rate support of two per cent on prevailing LTFF for future import and purchase of machinery. An allocation of Rs.500 million has been proposed for schemes to be implemented this year. The total amount to be spent in three years is projected at Rs.3 billion. A mark-up support of 1.5% will be provided on export finance scheme (EFS) to selected sectors at a cost of Rs. 1.25 billion, including Rs. 200 million in 2012-2013.

The sectors for EFS support are fish and fish preparations, fruit and vegetables, spices, meat and meat preparations, carpets and rugs, sports

goods, footwear, leather products, surgical goods, cutlery, onyx products, pharmaceuticals, electric fans, transport equipment, electrical machinery, specialized machinery, furniture, handicrafts and computer-related services.

An amount of Rs.14 billion will be given as adhoc relief at three per cent of FoB to offset the impact of higher cost of utilities for exporters in selected sectors. The measure will cost Rs.3bn this year. An amount of Rs.2 billion-Rs125 million will be allocated for marketing development assistance for regional countries.

A Rs. 25 million allocation has been proposed for export promotion campaigns for agro-processed products; Rs. 400 million for encouraging opening of retail outlets; and Rs.400m for subsidizing 50% cost of plant and machinery for establishing processing plants for meat, fruits, vegetables, dates and olives in Azad Jammu and Kashmir, Baluchistan, Gilgit - Baltistan and Khyber Pakhtunkhwa.

An amount of Rs.30 million will be allocated for upgrading rice inspection laboratories, Rs. 20 million for subsidy at 100% of the prevailing mark-up rate for establishing mining and processing units in Khyber Pakhtunkhwa and Baluchistan.

Another Rs.20 million has been allocated for strengthening women's chamber of commerce and

industry, Rs.32 million for setting up a resource management cell at the ministry of commerce, Rs.28 million for establishing leather export promotion council and Rs.70 million for services export development council.

### ***Regulatory Measures***

Unrestricted import of used motorized wheelchairs and five-year-old used or second-hand ambulances has been allowed. Two per cent of export proceeds will be allowed to manufacturers-cum-exporters for duty-free import of accessories for value-addition for leather garments and made-ups. Import of non-hazardous plastic scrap has been allowed for industrial consumers for use as raw material. A ban has been imposed on import of plastic waste, hospital waste, used sewerage pipes and chemical containers.

Import of non-sterilized surgical needles and syringes will be restricted to industrial units, condition of Euro-II may be made applicable on import of all types of specialized vehicles, such as crane-mounted lorries, dump trucks and mixtures lorries. The import of used sprinkle lorries will be restricted to a maximum of five year old. All goods from banned list imported in commercial quality shall be allowed to re-export at importer/shipping lines cost. The imported substandard goods from the restricted list should be destroyed within a period of six months without offering any release.

Import of waste and scrape of tyres in completely shredded/ cut form will only be allowed to industrial consumers; domestic standards will equally apply to imported goods as well.

Construction engineering and electrical companies will be allowed to retain abroad the exported machinery to carry out work on export-cum-import basis with the condition that they will import the same on the conclusion of the contract against indemnity bond.

All exporters of edible products are to be registered and export of vegetable ghee and cooking oil will be allowed in packaging of up to 25kg to encourage value-addition.

### ***Steps to contain Environmental & Health Hazards***

- Ban on import of plastic waste/scrap-hospital waste, used sewerage pipes and chemical containers.
- Restricting import of non-sterilized surgical needles and syringes to industrial units.
- Only the more fuel efficient Euro-II category crane-mounted lorries, dump trucks, mixture lorries, etc, will be imported.
- Imported used tyres will only be allowed for industrial use.

***Institutions to be Setup***

- Export-Import Bank.
- Pakistan Land Port Authority.
- Leather Export Promotion Council.
- Service Trade Development Council.

## CHAPTER - V

### EXISTING PATTERN OF INDUSTRIAL DEVELOPMENT

#### 5.1 DESCRIPTION OF EXISTING INDUSTRIES

There are about 426 large, medium and some small industrial units in the district. Industry-wise installed capacity of major industrial units is given in Table-10.

**TABLE-10**

#### Industry-wise Installed Capacity

Sr. #	Industry	No. of units	Annual Installed Capacity
1	Agricultural Implements	12	1245 Nos.
2	Beverage	1	250 Th. Crates
3	Biscuit	1	150 M.Tons
4	Ceramics Products	1	80000 Dozen
5	Chip/Straw Board	2	1600 Th. Sq. Ft.
6	Citrus Grading	41	30000 M.Tons
7	Cold Storage	24	1099800 Bags/ Crates
8	Confectionery	5	137 M.Tons
9	Cosmetics	1	6000 Th. Dozen
10	Cotton Waste	1	2 Machines
11	Dairy Products	1	26127 M.Tons, 2000 M.Tons, 4200 Litres, 58400 Litres
12	Domestic Hardware	4	411333 Dozen
13	Drugs & Pharmaceutical	2	3900 Th. Nos.

14	Electric Goods	141	58470 Th. Rs.
15	Fans/ Coolers	12	10400 Nos.
16	Flour Mills	12	1680 M.Tons /Day
17	Foundry Products	7	305 M.Tons
18	Glass & Glass Products	1	1500 M.Tons
19	Hatchery	1	500000 Nos.
20	Leather Footwear	19	509600 Pairs
21	Packages	3	1700 Th. Nos.
22	Paints And Varnishes	8	327 Th. Litres
23	Paper & Paper Board	1	3250 M.Tons
24	Pesticides & Insecticides	1	2000 M.Tons
25	Plastic Products	14	1265 M.Tons, 250 Th. Pair Shoes
26	Poultry Feed	2	1000 M.Tons
27	PVC Pipe	1	12000 M.Tons
28	Rice Mills	24	24 Shellers,
29	Soap & Detergents	41	6220 M.Tons
30	Sodium Silicate	1	2000 M.Tons
31	Sugar	4	24000 TCD
32	Tannery	8	1400 Th. Sq.Ft
33	Textile Composite	1	43024 Spindles, 224 Looms
34	Textile Spinning	6	35500 Spindles
35	Vegetable Ghee / Cooking Oil	2	44000 M.Tons

Source: District Officer (E&IP), Sargodha.

**Note:** For further details visit: [www.doi.pitb.gov.pk](http://www.doi.pitb.gov.pk)

## CHAPTER - VI

### FUTURE INDUSTRIAL POTENTIAL

Keeping in view the availability of raw material, skilled labour, linkage between the industrial units, local / national / international demand, future industrial potential of district Sargodha is discussed hereunder:

It would, however, be kept in mind that though the above mentioned factors facilitate the success of any industrial unit, yet the entire success depends upon the investors / entrepreneurs and the capabilities of the personnel having the managerial control because any of these factors, if lacking is manageable. Therefore, it is advisable that detailed feasibility of industrial projects must be carried out before making final decision for investment.

#### 6.1 AGRICULTURE

Main crops of district Sargodha are wheat, rice, maize, cotton, sugarcane, and Moong. The annual average production of wheat, rice, maize, sugarcane and Moong over the period 2008-11 was 555.40, 77.57, 80.97, 2924.84 and 1142.67 thousand M.Tons respectively and of cotton was 19.33 thousand bales.

Among fruits, citrus are abundantly grown in district Sargodha. The average production of citrus over the period 2008-11 was 960647 M.Tons. A variety of vegetables are also grown in the district (Chapter-3, Section 3.1).

At present, seven textile mills, four sugar mills, 12 flour mills, 24 rice husking units are operating in the district.

In view of availability of various types of raw-material and related existing industries, there exists potential for corn oil / starch / glucose, rice bran oil, furfural from corn cobs, rice husk briquettes, fruit concentrate and fruit juice units. Vegetable dehydration has also a good prospect.

## **6.2 LIVESTOCK**

As per Punjab Development Statistics 2011, the population of cattle, buffaloes, sheep and goats in the district was 696, 799, 143 and 675 thousand heads respectively. The annual availability of hides / skins is estimated at 6,05,300 pieces. As regards poultry, there are 1137 broiler, 102 layer and 2 breeding poultry farms in the district.

In view of the existing milk processing unit, poultry farms, availability of hides & skins and urban population of Sargodha city, there exists good scope for dairy farms, cattle / goats / sheep

fattening farms, tannery, leather footwear, leather products and cattle / poultry feed mill.

### **6.3 INDUSTRY**

Besides milk processing unit, other important industries already operating in the district are four sugar mills and seven textile mills which reflects very good potential for paper and paper board, chip board / particle board, polypropylene woven bags, fructose / liquid sugar from molasses, hosiery, sports-wear, etc.

### **6.4 DEMAND BASED INDUSTRIES**

In view of general localized requirements of Sargodha district, particularly Sargodha city, there exists good scope for biscuit, detergent powder, ready-made garments, wooden furniture, electrical accessories, PVC pipes, hoses, steel furniture, fibre glass water tanks, melamine table-ware, etc.

### **6.5 LIST OF IDENTIFIED PROJECTS**

As per discussion given in Section 6.1 to 6.4, the following projects have been identified for investment in district Sargodha:

- Agriculture waste, by products raw material based industries for maximization of value addition chain
- Biscuits

- Corn Oil / Starch / Glucose
- Cattle / Sheep / Goats Fattening Farms
- Cattle / Poultry Feed Mill
- Chip Board / Particle Board
- Dairy Farms
- Detergent Powder
- Electrical Accessories
- Energy conservation / efficiency
- Furfural from corn Cobs
- Fruit Concentrate / Fruit Juice
- Fructose / Liquid Sugar from Molasses
- Fibre Glass Water Tanks
- Hosiery
- Leather Footwear
- Leather Products
- Melamine Table-Ware
- Paper and Paper Board
- Polypropylene Woven Bags (for Sugar Packing)
- PVC Pipes
- Plastic Hose Pipes
- Power generation through coal and other alternate fuels
- Power generation through bagasse
- Rice Husk Briquettes
- Rice Bran Oil
- Readymade Garments
- Sports-wear
- Steel Furniture
- Tannery
- Vegetable Dehydration
- Waste heat recovery system
- Wooden Furniture

**Directory of Industrial Establishments, Sargodha**

Sr. No.	Name / Address of unit	Phone No. / Website	Industry	Estb. Year	Investment (Th.Rs.)	Emp	Product	Annual Installed Capacity
1	Al-Hussani Wheat Thresher Railway Phatic College Road		Agricultural Implements	1989	1100	6	Wheat Thrashers	50 Nos.
2	Aslam Engineer Works Railway Phatic College Road	3721296	Agricultural Implements	1987	1200	8	Wheat Thrashers	75 Nos.
3	Diamond Wheat Thresher Railway Phatic College Road	3213795	Agricultural Implements	1986	1100	7	Wheat Thrashers	60 Nos.
4	Kashir Industries B-8 Sie	3212276	Agricultural Implements	1992	3000	10	Ploughs	200 Nos.
5	Khurshid Enterprises B-17 Sie	3212366	Agricultural Implements	1993	1468	31	Wheat Thrashers	225 Nos.
6	Kohinoor Wheat Thresher Fatima Jinnah Road	741006	Agricultural Implements	1993	1500	7	Wheat Thrashers	50 Nos.
7	Muhammad Shafeeq Foji Workshop Chak No.126/Sb		Agricultural Implements	1990	1000	9	Trolley	125 Nos.
8	New Bukhsh Wheat Thresher College Road		Agricultural Implements	1990	1200	7	Wheat Thrashers	60 Nos.
9	New Sialkot Wheat Thresher College Road	3213593	Agricultural Implements	1985	1300	7	Wheat Thrashers	70 Nos.
10	Noor Wheat Thresher Fatima Jinnah Road	741013	Agricultural Implements	1987	1500	8	Wheat Thrashers	80 Nos.

Sr. No.	Name / Address of unit	Phone No. / Website	Industry	Estb. Year	Investment (Th.Rs.)	Emp	Product	Annual Installed Capacity
11	Pakel Agro Industry C-9-10 Small Industry Estate		Agricultural Implements	1995	1200	8	Wheat Thrashers	150 Nos.
12	Saleem Wheat Thresher Fatima Jinnah Road	3718234	Agricultural Implements	1991	2000	8	Wheat Thrashers	100 Nos.
13	Shaheen Beverage (Pvt) Ltd. Lahore Road	881080	Beverage	1995	20000	39	Beverages	250 Th. Crates
14	Sadat Food Industries Factory Area Mohni Road,	3722043	Biscuits	1996	3400	25	Biscuites	150 M.Tons
15	Amjad Javid Ceramics Industries. Mohallah Sadeeq Abad Kot Fareed		Ceramics Products	1994	1100	20	Ceramics	80000 Dozen
16	Ali Wood Works SIE	3223572	Chip / Straw Board	2000	50000	20	Plywood	1500 Th. Sq. Ft.
17	Good World Plywood Industry Bhalwal Road Salam Interchange		Chip / Straw Board	2004	40000	23	Chip Board	100 Th. Sq. Ft.
18	Al Habib Kinno Factory & Cold Storage Ajnala Road Tehsil Bhalwal	793344	Citrus Grading	2000	5000	30	Citrus Grading / Waxing	15000 M.Tons
19	Al Rehman Kinno Factory & Cold Storage Chak No.6 Sb Tehsil Bhalwal	44011	Citrus Grading	2000	4500	30	Citrus Grading / Waxing	12000 M.Tons

Sr. No.	Name / Address of unit	Phone No. / Website	Industry	Estb. Year	Investment (Th.Rs.)	Emp	Product	Annual Installed Capacity
20	Ali International Salam Road Kot Momin Bhalwal	81822	Citrus Grading	2001	1900	20	Citrus Grading / Waxing	10000 M.Tons
21	Al-Mahmood Waxing & Grading Units Sakeesar Town	3751	Citrus Grading	1992	1000	20	Citrus Grading	10000 M.Tons
22	Amir Kinno Factory Kot Momin Road Bhalwal	45144	Citrus Grading	2001	3000	23	Citrus Grading / Waxing	10000 M.Tons
23	Anwar Khan Kinno Factory Chak 121 Sb Tehsil Sillanwali	784099	Citrus Grading	2002	3500	20	Citrus Grading / Waxing	10000 M.Tons
24	Arif Kinno Factory 17 Km Lahore Road		Citrus Grading	1995	5000	17	Citrus Grading	15000 M.Tons
25	Arooma Kinno Factory Lahore Road	780540	Citrus Grading	2001	3000	22	Citrus Grading / Waxing	10000 M.Tons
26	Ashfaq Afzal & Co. Kinno Factory & Cold Storage Sargodha Road Tehsil Bhalwal	43806	Citrus Grading	2000	4000	25	Citrus Grading / Waxing	10000 M.Tons
27	Aslam Kinno Factory Sargodha Bhalwal Road	871224	Citrus Grading	2002	3500	25	Citrus Grading / Waxing	10000 M.Tons
28	Azam Kinno Factory Mouza Ottan Sargodha Road Tehsil Bhalwal	6752377	Citrus Grading	2000	2800	25	Citrus Grading / Waxing	12000 M.Tons
29	Bhalwal Kinno Factory Ajnala Road Bhalwal	793083	Citrus Grading	2002	3500	25	Citrus Grading / Waxing	12000 M.Tons

Sr. No.	Name / Address of unit	Phone No. / Website	Industry	Estb. Year	Investment (Th.Rs.)	Emp	Product	Annual Installed Capacity
30	Ch Akram Anjuman Chak 84 Sillanwali Road	741542	Citrus Grading	2002	3000	20	Citrus Grading / Waxing	10000 M.Tons
31	Chaudhry Arish Kinno Factory Tehsil Bhalwal	43847-8	Citrus Grading	2003	4000	25	Citrus Grading / Waxing	12000 M.Tons
32	Gondal Kinno Factory Gujrat Road Bhalwal	42267	Citrus Grading	2001	3000	20	Citrus Grading / Waxing	10000 M.Tons
33	Hameed Kinno Factory Mozamabad Tehsil Bhalwal	322	Citrus Grading	2000	3500	20	Citrus Grading / Waxing	10000 M.Tons
34	Hasin Traders Api Ravana Tehsil Kot Momin	890036	Citrus Grading	2000	2500	20	Citrus Grading / Waxing	12000 M.Tons
35	Iftikhar & Co Kinno Factory & Cold Storage Ajnala Road	793041	Citrus Grading	2001	4500	30	Citrus Grading / Waxing	15000 M.Tons
36	Lalazar Kinno Factory & Cold Storage Hojin Tehsil Kot Momin	890110	Citrus Grading	1999	3200	18	Citrus Grading / Waxing	18000 M.Tons
37	Madina Kinno Factory & Cold Storage Butcha Kalan Tehsil Kot Momin	45191-2	Citrus Grading	2003	500	30	Citrus Grading / Waxing	15000 M.Tons
38	Mashallah Kinno Factory Kot Momin Road Bhalwal	43116	Citrus Grading	2002	3000	20	Citrus Grading / Waxing	10000 M.Tons
39	Mateel Kinno Factory Tehsil Kot Momin Baghtanwala Road Mateela	780038	Citrus Grading	2003	4000	20	Citrus Grading / Waxing	10000 M.Tons

Sr. No.	Name / Address of unit	Phone No. / Website	Industry	Estb. Year	Investment (Th.Rs.)	Emp	Product	Annual Installed Capacity
40	Meeran Traders Tehsil Kot Momin	81697	Citrus Grading	2000	2000	20	Citrus Grading / Waxing	10000 M.Tons
41	National Kinno Factory Chak 10 Tehsil Bhalwal	43310	Citrus Grading	2003	3500	25	Citrus Grading / Waxing	10000 M.Tons
42	Pak Fresh Fruit Factory Amir Colony, Bhalwal		Citrus Grading	1980	5000	10	Citrus Grading	15000 M.Tons
43	Pak Kinno Factory Ajnala Road Tehsil Bhalwal	793083	Citrus Grading	2002	3500	25	Citrus Grading / Waxing	12000 M.Tons
44	Qureshi Kinno Factory Sultanpur Road Tehsil Kot Momin	72119	Citrus Grading	1999	2300	22	Citrus Grading / Waxing	10000 M.Tons
45	Rana Kinno Factory Chak 85/N.B Sillanwali Road	3722733	Citrus Grading	1997	1000	24	Citrus Grading	15000 M.Tons
46	Rao Manzoor Kinno Factory Old Bhalwal Road Tehsil Bhalwal	43156	Citrus Grading	1999	2500	20	Citrus Grading / Waxing	10000 M.Tons
47	Roshan Enterprises & Cold Storage Kot Momin Road Bhalwal	42425	Citrus Grading	2000	3500	22	Citrus Grading / Waxing	12000 M.Tons
48	Saleem Kinno Factory Farooqa Tehsil Sahiwal	788044	Citrus Grading	2002	3000	15	Citrus Grading / Waxing	10000 M.Tons
49	Saleem Kinno Factory Kot Momin (Laliani) Tehsil Bhalwal	892312	Citrus Grading	2001	2500	20	Citrus Grading / Waxing	10000 M.Tons

Sr. No.	Name / Address of unit	Phone No. / Website	Industry	Estb. Year	Investment (Th.Rs.)	Emp	Product	Annual Installed Capacity
50	Sarfraz Kinno Factory Mozamabad Tehsil Bhalwal	322	Citrus Grading	2000	3000	20	Citrus Grading / Waxing	12000 M.Tons
51	Sargodha Kinno Factory Lahore Road	216698, 210672	Citrus Grading	2002	3500	25	Citrus Grading / Waxing	10000 M.Tons
52	Shahzad & Co Kinno Factory Kot Momin Road Bhalwal	81889	Citrus Grading	2001	2800	22	Citrus Grading / Waxing	10000 M.Tons
53	Shahzad Kinno Factory Chak No.6 Sb Tehsil Bhalwal	44001	Citrus Grading	2001	3500	25	Citrus Grading / Waxing	10000 M.Tons
54	Sheikh Javaid Kinno Factory & Cold Storage Lalian Faisalabad Road	610400	Citrus Grading	2001	4800	30	Citrus Grading / Waxing	15000 M.Tons
55	Sindho Kinno Factory Chak 19 Sb Kot Momin	890225	Citrus Grading	2002	3000	25	Citrus Grading / Waxing	10000 M.Tons
56	Union Fruit Co & Cold Storage Kot Momin Bhalwal	43520	Citrus Grading	2001	4000	25	Citrus Grading / Waxing	15000 M.Tons
57	Warraich Kinno Factory Chak 15 Nb Tehsil Bhalwal	415	Citrus Grading	1999	2500	18	Citrus Grading / Waxing	10000 M.Tons
58	Zahid Kinno Factory & Cold Storage 4 Km Kot Momin Road Tehsil Bhalwal	892245	Citrus Grading	1999	3000	20	Citrus Grading / Waxing	15000 M.Tons
59	Akram Cold Storage Wan Miani Teh.Bhalwal	522496	Cold Storage	1992	1800	6	Vegetables / Fruits	10000 Bags

Sr. No.	Name / Address of unit	Phone No. / Website	Industry	Estb. Year	Investment (Th.Rs.)	Emp	Product	Annual Installed Capacity
60	Al-Habib Cold Storage Ajnala Road Bhalwal	3793344	Cold Storage	2000	4000	10	Vegetables / Fruits	6000 Crates /Bags
61	Al-Mahmood Cold Storage Sakesar Bhalwal, Sargodha Rd	6642599	Cold Storage	1995	5000	13	Vegetables / Fruits	8000 Crates /Bags
62	Al-Rehman Cold Storage Chak 6 Sb Bhalwal	6644011	Cold Storage	2000	3500	9	Vegetables / Fruits	4500 Crates /Bags
63	Bashir Cold Storage 6-Km Lahore Road	5348	Cold Storage	1978	1100	5	Vegetables / Fruits	7000 Bags
64	Bismillah Cold Storage Bye Pass Road Chak 52 Nb	3717781	Cold Storage	2003	3500	10	Vegetables / Fruits	70000 Crates, 10000 Bags
65	Iftikhar And Co., Ajnala Road Bhalwal	3793041	Cold Storage	2001	4000	9	Vegetables / Fruits	2500 Crates /Bags
66	Ishfaq Afzal & Co. Cold Storage Sargodha Rd Bhalwal	6643806	Cold Storage	2000	3200	10	Vegetables / Fruits	4000 Crates /Bags
67	Ittefaq Cold Storage, Factory Area	3721675	Cold Storage	1997	3200	14	Vegetables / Fruits	80000 Crates /Bags
68	Lalazar Cold Storage Hojin Kot Momin	6890110	Cold Storage	1999	4200	8	Vegetables / Fruits	35000 Crates /Bags
69	Lalian Cold Storage Faisalabad Road	66610400	Cold Storage	2001	3200	9	Vegetables / Fruits	4800 Crates /Bags
70	Madina Cold Storage Bucha Killah Kot Momin	6645191	Cold Storage	2003	4200	8	Vegetables / Fruits	5000 Crates /Bags
71	Madina Cold Storage Sillanwali Rd	3724590	Cold Storage	1989	4800	14	Vegetables / Fruits	150000 Crates, 25000 Bags

Sr. No.	Name / Address of unit	Phone No. / Website	Industry	Estb. Year	Investment (Th.Rs.)	Emp	Product	Annual Installed Capacity
72	Mian Cold Storage 10-K.M. Lahore Road		Cold Storage	1990	2500	5	Vegetables / Fruits	40000 Crates
73	National Cooperative Supplies Corporation Talibwala Rd	3210672	Cold Storage	1998	18931	7	Vegetables / Fruits	34000 Crates, 24000 Bags
74	Roshan Cold Storage Kot Momin Road Bhalwal	6892241-2	Cold Storage	2000	3800	8	Vegetables / Fruits	10000 Crates /Bags
75	Shaheen Cold Storage Muhafiz Town, Faisalabad Road	3750520	Cold Storage	1990	4500	10	Vegetables / Fruits	100000 Crates, 10000 Bags
76	Sultan Cold Storage Jhal Chaakkian Chak 66 Nb	3795066	Cold Storage	1992	2800	10	Vegetables / Fruits	50000 Crates, 5000 Bags
77	Tariq Cold Storage, E Factory Area	728241	Cold Storage	1974	3800	13	Vegetables / Fruits	100000 Crates, 20000 Bags
78	Union Fruit Co. Kot Momin Bhalwal	6643520	Cold Storage	2001	3800	7	Vegetables / Fruits	20000 Crates /Bags
79	Warraich Cold Storage Ajnala Road Bhalwal	642568	Cold Storage	1990	4200	12	Vegetables /Fruits	100000 Crates /Bags
80	Zahid Cold Storage 4 Km., Kot Momin Road Towards Bhalwal	66892245	Cold Storage	1999	4000	10	Vegetables / Fruits	50000 Crates /Bags
81	Zam Zam Cold Storage Ajnala Bhalwal Road, Bhalwal	642025	Cold Storage	1991	4000	11	Vegetables /Fruits	70000 Crates, 30000 Bags
82	Zemindara Cold Storage Sillanwali Rd		Cold Storage	1977	1000	6	Vegetables / Fruits	15000 Crates

Sr. No.	Name / Address of unit	Phone No. / Website	Industry	Estb. Year	Investment (Th.Rs.)	Emp	Product	Annual Installed Capacity
83	Fresco International P-1175 Iqbal Park (Gujjar Chowk)	741112	Confectionery	1996	200	6	Confectionery	10 M.Tons
84	Muhammad Zahoor Sweet Factory St. No.2 Block No.22		Confectionery	1994	1000	6	Confectionery	50 M.Tons
85	Tayyab Industries D-71 PSK, Industrial Estate		Confectionery	1996	500	6	Confectionery	10 M.Tons
86	United Traders Rehmanpura No.2		Confectionery	1993	1100	8	Confectionery	60 M.Tons
87	Modern Perfumry Company 407/D Satellite Town	3211766	Cosmetics	1990	195	5	Cosmetics	7 M.Tons
88	Prince Cosmetics 190-Islampura	3717248	Cosmetics	1996	800	8	Perfumes	6000 Th. Dozen
89	Muhammad Ismail Cotton Waste Factory, Factory Area	3723349	Cotton Waste	1988	5000	11	Cotton Waste	2 Machines
90	Noon Pakistan Ltd. Sargodha Gujrat Road Bhalwal	645013	Dairy Products	1971	231778	453	Milk Powder/ Butter, Cheese, Pasteurized Milk, Uht Milk	26127 M.Tons, 2000 M.Tons, 4200 Litres, 58400 Litres
91	M.S.Mukhtar Industries Rehman Pura No.2	3713633	Domestic Hardware	1969	4000	60	Hardware	8333 Dozen

Sr. No.	Name / Address of unit	Phone No. / Website	Industry	Estb. Year	Investment (Th.Rs.)	Emp	Product	Annual Installed Capacity
92	Mukhtar Industries (I) Rehmanpura	3712075	Domestic Hardware	1972	4000	15	Hardware	200000 Dozen
93	Mukhtar Industries (ii) Akram Colony	3710115	Domestic Hardware	1975	3500	12	Hardware	200000 Dozen
94	Sana Trader C-41 Sie		Domestic Hardware	1995	1400	8	Hardware	3000 Dozen
95	Qintar Pharmaceutic als 14-A Sie	3216343	Drugs & Pharmaceu ticals	2003	3000	12	Tablets	2400 Th. Nos.
96	Well Care Pharmaceutic als 7-A Psic	3220176	Drugs & Pharmaceu ticals	2000	32000	12	Syrups	1500 Th. Nos.
97	(R.C.I) Bajwa Bakelite Industry New Abadi Kot Fareed	3712619	Electric Goods	1992	1400	16	Switches	500 Th. Rs.
98	(Shanah) Muhammad Sharif Bakelite Industry Block No.29		Electric Goods	1994	1200	12	Switches	500 Th. Rs.
99	(Z.B.I) Zulfiqar Bakelite Industry Rehmanpura		Electric Goods	1993	1000	10	Switches	500 Th. Rs.
100	Aafaq Khan Bakelite Industry Block No.27		Electric Goods	1994	1300	18	Switches	300 Th. Rs.
101	Abdid Hussain Beckilite Industry Kot Fareed		Electric Goods	1994	1000	9	Switches	450 Th. Rs.
102	Abdul Lateef Bakelite Industry Kot Fareed		Electric Goods	1993	1000	12	Switches	500 Th. Rs.
103	Abdul Manan Brass Screw Maker Azam Market		Electric Goods	1994	600	8	Switches	300 Th. Rs.

Sr. No.	Name / Address of unit	Phone No. / Website	Industry	Estb. Year	Investment (Th.Rs.)	Emp	Product	Annual Installed Capacity
104	Abdul Waheed Matle Brass Industries Azam Market		Electric Goods	1990	600	20	Switches	200 Th. Rs.
105	Abdullah Becklikte Industry Block No.27		Electric Goods	1994	600	10	Switches	500 Th. Rs.
106	Abid Bakelite Industry Factory Area		Electric Goods	1994	600	12	Switches	400 Th. Rs.
107	Aero Rohman Bakelite Industries Street No.2 Millatabad	3212761	Electric Goods	1992	500	15	Switches	500 Th. Rs.
108	Ahmed Bakelite Industries Water Supply Road		Electric Goods	1993	700	6	Switches	120 Th. Rs.
109	Ahmed Industries C-49, Industrial Estate		Electric Goods	1996	500	6	Switches	150 Th. Rs.
110	Akbar Bakelite Industry Azam Market		Electric Goods	1994	500	10	Switches	300 Th. Rs.
111	Akhtar Bakelite Industry Block No. 25		Electric Goods	1992	5000	10	Switches	500 Th. Rs.
112	Amin Bakelite Industry Kot Fareed		Electric Goods	1994	1100	10	Switches	500 Th. Rs.
113	Amjad Javid Creamics Industries Mohallah Sadiqabad		Electric Goods	1994	1100	20	Switches	800 Th. Rs.
114	Arshad Plastic Shoue Industries St. No.5 Kot Fareed		Electric Goods	1992	1300	10	Switches	450 Th. Rs.

Sr. No.	Name / Address of unit	Phone No. / Website	Industry	Estb. Year	Investment (Th.Rs.)	Emp	Product	Annual Installed Capacity
115	Ashraf Bakelite Industries St. No.2 Kot Fareed		Electric Goods	1994	1000	8	Switches	300 Th. Rs.
116	Ashraf Bakelite Industry Kot Fareed		Electric Goods	1994	1300	12	Switches	550 Th. Rs.
117	Asia Bakelite Industry Block No.25		Electric Goods	1993	1000	10	Switches	500 Th. Rs.
118	Aslam Bakelite Industries Factory Area		Electric Goods	1993	600	9	Switches	500 Th. Rs.
119	Aslam Bakelite Industry Millatabad		Electric Goods	1992	500	10	Switches	500 Th. Rs.
120	Bashir Ahmed Bakelite Industries Block No.22		Electric Goods	1993	600	12	Switches	500 Th. Rs.
121	Bright Trader Main Road Block No.23		Electric Goods	1992	600	13	Switches	500 Th. Rs.
122	Ch. Naseem And Company Zafar Colony		Electric Goods	1993	1400	5	Switches	300 Th. Rs.
123	China Bakelite Industry Block No.22	3712912	Electric Goods	1990	1500	13	Switches	500 Th. Rs.
124	Creseent Electronic Company Block No.6	3720980	Electric Goods	1985	1175	13	Switches	500 Th. Rs.
125	Cristal Bakelite Industry Block No. 35	712025	Electric Goods	1994	1000	10	Switches	300 Th. Rs.
126	Crown Bakelite Industries Block No.27		Electric Goods	1990	1200	15	Switches	500 Th. Rs.

Sr. No.	Name / Address of unit	Phone No. / Website	Industry	Estb. Year	Investment (Th.Rs.)	Emp	Product	Annual Installed Capacity
127	Dawn Bakelite Industry Rehmanpura No.2	3713749	Electric Goods	1990	1000	11	Switches	300 Th. Rs.
128	Denco Backelite Industry Water Supply Road		Electric Goods	1994	1200	15	Switches	450 Th. Rs.
129	Diamond Bakelite Industry Kot Fareed		Electric Goods	1990	1300	12	Switches	300 Th. Rs.
130	Diamond Electronic Industry Millatabad Colony	3217996	Electric Goods	1985	1300	12	Switches	500 Th. Rs.
131	Double A.B. Bakelite Industries Mohallah Sadeeqabad	3715478	Electric Goods	1992	1500	20	Switches	500 Th. Rs.
132	Emco Bakelite Industry St. Ghalab Shah Kot Fareed		Electric Goods	1994	1200	18	Switches	500 Th. Rs.
133	English Bakelite Industries Block No.33		Electric Goods	1990	1200	10	Switches	500 Th. Rs.
134	Faisal Bakelite Industry Block No.29		Electric Goods	1994	500	6	Switches	800 Th. Rs.
135	Fashan Bakelite Industry Iqbal Colony	3715060	Electric Goods	1994	1300	10	Switches	500 Th. Rs.
136	Fine Bakelite Industry Block No.25		Electric Goods	1993	1000	8	Switches	500 Th. Rs.
137	Fine Bakelite Industry Noor Pur		Electric Goods	1993	1100	15	Switches	600 Th. Rs.

Sr. No.	Name / Address of unit	Phone No. / Website	Industry	Estb. Year	Investment (Th.Rs.)	Emp	Product	Annual Installed Capacity
138	FirSCO Bakelite Industry Mokam-E-Hayat		Electric Goods	1994	1000	10	Switches	600 Th. Rs.
139	General Bakelite Industry St. No.3 Millatabad	214486	Electric Goods	1994	1000	6	Switches	300 Th. Rs.
140	Gentry Bakelite Industry, Block A Satellite Town		Electric Goods	1993	6000	8	Switches	400 Th. Rs.
141	Ghulam Rasool Bakelite Industry Block No.29		Electric Goods	1994	6000	8	Switches	450 Th. Rs.
142	Gift Bakelite Industry Itehad Colony Block No.29		Electric Goods	1994	5000	13	Switches	300 Th. Rs.
143	Golden Bakelite Industry Rehmanpura	3713544	Electric Goods	1994	6000	10	Switches	500 Th. Rs.
144	Hamid Bakelite Industry, St. No.2 Rehmanpura		Electric Goods	1990	800	15	Switches	250 Th. Rs.
145	Hero Pak Electrical (Pvt) Ltd. Military Farm Road	3711715	Electric Goods	1994	2400	68	Sockets	600 Th. Rs.
146	I.S. Bakelite Industry Block No.18		Electric Goods	1994	1100	13	Switches	300 Th. Rs.
147	Ibraheem Bakelite Industry Zafar Colony		Electric Goods	1994	1200	8	Switches	400 Th. Rs.

Sr. No.	Name / Address of unit	Phone No. / Website	Industry	Estb. Year	Investment (Th.Rs.)	Emp	Product	Annual Installed Capacity
148	Ijaz Hussain Scrown Industry Block No.7		Electric Goods	1986	1200	7	Switches	400 Th. Rs.
149	Intizar Hussain Bakelite Industry Shaukat Hayat Colony	3711076	Electric Goods	1994	1200	8	Switches	400 Th. Rs.
150	Iqbal Bakelite Industry St. No.6 Sadiqabad	3714396	Electric Goods	1994	1500	20	Switches	800 Th. Rs.
151	Irfan Bakelite Industry Block No. 25		Electric Goods	1982	1000	7	Switches	500 Th. Rs.
152	Islam Bakelite Industry Block No.27		Electric Goods	1993	1000	8	Switches	500 Th. Rs.
153	Islam Bakelite Industry St. No.7 Kot Fareed	3716512	Electric Goods	1994	1100	8	Switches	500 Th. Rs.
154	Ittefaq Electrical Industry Shoukat Hayat Colony		Electric Goods	1993	1100	15	Switches	300 Th. Rs.
155	J. E. K. O. Bakelite Industry 25-D, Sattlite Town	3210651	Electric Goods	1990	1200	9	Switches	500 Th. Rs.
156	Jameel Bakelite Industries St. No. 2 Kot Fareed		Electric Goods	1993	1200	20	Switches	350 Th. Rs.
157	Javaid Bakelite Industry Block No.8, Satellite Town	3211016	Electric Goods	1994	1300	20	Switches	500 Th. Rs.
158	Khalid Plastic Industry Block No.31		Electric Goods	1994	1000	8	Switches	500 Th. Rs.

Sr. No.	Name / Address of unit	Phone No. / Website	Industry	Estb. Year	Investment (Th.Rs.)	Emp	Product	Annual Installed Capacity
159	L.B.I.(Captain) Bakelite Industry Block No.12	3710332	Electric Goods	1985	1000	15	Switches	300 Th. Rs.
160	Laeeq Ahmed Bakelite Industry Water Supply Road		Electric Goods	1993	1000	8	Switches	500 Th. Rs.
161	Lark Bakelite Industry Burhan Colony		Electric Goods	1989	1300	8	Switches	600 Th. Rs.
162	Leader Bakelite Industries Block No. 34		Electric Goods	1994	1200	20	Switches	500 Th. Rs.
163	Long Life Bakelite Industries St.No.6 Muhammadi Colony		Electric Goods	1994	1000	8	Switches	300 Th. Rs.
164	M.K.Bakelite Industry Rehmanpura No.2		Electric Goods	1994	1000	17	Switches	300 Th. Rs.
165	Mansoor Elahi Bakelite Industry St. No.6 Millatabad		Electric Goods	1994	1000	10	Switches	500 Th. Rs.
166	Manzoor Bakelite Industries Rehmanpura	3713923	Electric Goods	1994	1500	15	Switches	400 Th. Rs.
167	Masco Screw Industry Urban Area	3716807	Electric Goods	1992	1200	10	Switches	250 Th. Rs.
168	Masshal Bakelite Industry Nazir Park	3714058	Electric Goods	1990	1200	15	Switches	500 Th. Rs.
169	Mehboob Bakelite D-68 SIE		Electric Goods	1996	1000	5	Switches	300 Th. Rs.

Sr. No.	Name / Address of unit	Phone No. / Website	Industry	Estb. Year	Investment (Th.Rs.)	Emp	Product	Annual Installed Capacity
170	Mehmood Bakelite Industry Block No.25		Electric Goods	1994	1200	10	Switches	400 Th. Rs.
171	Mehran Room Cooler Block No. 22	3713062	Electric Goods	1992	1500	13	Switches	500 Th. Rs.
172	Mehtab Ahmed Bakelite Industry St. No. 6 Rehmanpura		Electric Goods	1994	1100	10	Switches	400 Th. Rs.
173	Mobeen Ahmed Bakelite Industry Rehmanpura		Electric Goods	1992	1000	10	Switches	500 Th. Rs.
174	Moon Star Bakelite Industry Kamboh Colony		Electric Goods	1992	1200	10	Switches	500 Th. Rs.
175	Mughal Star Room Cooler, Nazeer Colony	3710672	Electric Goods	1994	1200	13	Switches	450 Th. Rs.
176	Muhammad Afzal Bakelite Industry Block No.29		Electric Goods	1994	500	5	Switches	800 Th. Rs.
177	Muhammad Afzal Metal Casting St. 5 Rehmanpura		Electric Goods	1994	800	10	Switches	450 Th. Rs.
178	Muhammad Akram Bakelite Industry Kot Fareed		Electric Goods	1994	1000	10	Switches	450 Th. Rs.
179	Muhammad Anwar Bakelite Industry Rehmanpura No.2		Electric Goods	1992	1420	18	Switches	500 Th. Rs.

Sr. No.	Name / Address of unit	Phone No. / Website	Industry	Estb. Year	Investment (Th.Rs.)	Emp	Product	Annual Installed Capacity
180	Muhammad Arif Bakelite Industry Mujahid Colony		Electric Goods	1994	1100	10	Switches	400 Th. Rs.
181	Muhammad Ashraf Bakelite Industry Zafar Colony		Electric Goods	1994	1000	8	Switches	300 Th. Rs.
182	Muhammad Aslam Bakelite Industry St. 3 Millatabad		Electric Goods	1994	1000	8	Switches	400 Th. Rs.
183	Muhammad Din (Khayber) Bakelite Industry Water Supply Rd Block 29		Electric Goods	1994	1200	10	Switches	500 Th. Rs.
184	Muhammad Hafiz Screw Maker Block No.29		Electric Goods	1994	1300	5	Switches	500 Th. Rs.
185	Muhammad Idrees Bakelite Industry Azam Market		Electric Goods	1993	1000	10	Switches	500 Th. Rs.
186	Muhammad Ikhlaq Bakelite Industry Sidiqabad		Electric Goods	1990	1000	8	Switches	500 Th. Rs.
187	Muhammad Ishfaq Bakelite Industry Sadiqabad		Electric Goods	1993	1200	8	Switches	400 Th. Rs.
188	Muhammad Khalid Screw Maker Rehmanpura		Electric Goods	1985	1200	8	Switches	300 Th. Rs.
189	Muhammad Munior Screw Maker St. No.12 Makam-E-Hayat		Electric Goods	1992	1000	8	Switches	500 Th. Rs.

Sr. No.	Name / Address of unit	Phone No. / Website	Industry	Estb. Year	Investment (Th.Rs.)	Emp	Product	Annual Installed Capacity
190	Muhammad Naeem Bakelite Industry Sadeeq Abad		Electric Goods	1990	1000	8	Switches	250 Th. Rs.
191	Muhammad Sadiq Metal Bross Bakelite Zafar Colony		Electric Goods	1990	900	10	Switches	350 Th. Rs.
192	Muhammad Saleem Screw Industry, Chowk Muhammadia Colony	3715748	Electric Goods	1994	1200	10	Switches	300 Th. Rs.
193	Muhammad Sarwar Bakelite Industry Block No.25		Electric Goods	1993	1100	15	Switches	500 Th. Rs.
194	Muhammad Shahid Bakelite Industry St. No.6 Bloc No.25	3712566	Electric Goods	1994	1450	8	Switches	400 Th. Rs.
195	Muhammad Sharif Brass Works St. No.4 Kot Fareed		Electric Goods	1994	1250	6	Switches	200 Th. Rs.
196	Muhammad Yasin Bakelite Industry Block No.18		Electric Goods	1994	1400	8	Switches	300 Th. Rs.
197	N.P.Bakelite Industry Main Road Muhammadi Colony		Electric Goods	1994	1000	7	Switches	350 Th. Rs.
198	Nadeem Bakelite Industry Block No.23		Electric Goods	1992	1000	8	Switches	400 Th. Rs.

Sr. No.	Name / Address of unit	Phone No. / Website	Industry	Estb. Year	Investment (Th.Rs.)	Emp	Product	Annual Installed Capacity
199	Naeem Bakelite Industry Street No.1 Makam-E-Hayat		Electric Goods	1994	1000	10	Switches	500 Th. Rs.
200	National Bakelite Industry Block No.25, Yateem Khana Road	3713803	Electric Goods	1987	1400	10	Switches	800 Th. Rs.
201	Naveed Bakelite Industry Iqbal Colony		Electric Goods	1993	1100	8	Switches	400 Th. Rs.
202	Naz Bakelite Industry Main Road Block No.29		Electric Goods	1993	1400	10	Switches	800 Th. Rs.
203	Nazir Bakelite Industry Near Govt. Women College Block No.22	3711227	Electric Goods	1992	600	10	Switches	600 Th. Rs.
204	Nazir Brass Screw Maker Rehmanpura		Electric Goods	1993	500	8	Switches	300 Th. Rs.
205	Nice Bakelite Industry Block No.22		Electric Goods	1992	900	10	Switches	350 Th. Rs.
206	Olympic Bakelite Industry Block No.25	3714698	Electric Goods	1994	1200	10	Switches	500 Th. Rs.
207	Pakistan National Industry Millatabad Colony	3210930	Electric Goods	1978	700	12	Switches	400 Th. Rs.
208	Paradise Bakelite Industry Millatabad		Electric Goods	1994	1000	8	Switches	400 Th. Rs.

Sr. No.	Name / Address of unit	Phone No. / Website	Industry	Estb. Year	Investment (Th.Rs.)	Emp	Product	Annual Installed Capacity
209	Power Electronic Co. Block No.25		Electric Goods	1994	1000	8	Switches	500 Th. Rs.
210	R.E.C. Bakelite Industry St. No.1 Kamboh Colony	3717986	Electric Goods	1994	1200	8	Switches	500 Th. Rs.
211	Rafiq Bakelite Industry Water Supply Road		Electric Goods	1994	1000	10	Switches	400 Th. Rs.
212	Rana Khurshid Bakelite Industry St. No.1 Makam-E-Hayat		Electric Goods	1994	1000	8	Switches	550 Th. Rs.
213	Rashid Bakelite Industry Block No.30		Electric Goods	1994	1000	8	Switches	300 Th. Rs.
214	Reco Bakelite Industry Block No.29		Electric Goods	1992	1100	10	Switches	300 Th. Rs.
215	Remco Bakelite Industry Block No.25		Electric Goods	1993	1000	8	Switches	300 Th. Rs.
216	Reno Bakelite Industry St. No. 3 Millatabad		Electric Goods	1992	1000	8	Switches	400 Th. Rs.
217	Riaz Bakelite Industry Sharazi Park Rehmanpura		Electric Goods	1994	1200	10	Switches	100 Th. Rs.
218	S.K.N Bakelite Industry Block-A Sattelite Town		Electric Goods	1994	1000	8	Switches	400 Th. Rs.
219	Sageer Ahmed Bakelite Industry St. No.5 Kot Fareed		Electric Goods	1994	1000	8	Switches	500 Th. Rs.

Sr. No.	Name / Address of unit	Phone No. / Website	Industry	Estb. Year	Investment (Th.Rs.)	Emp	Product	Annual Installed Capacity
220	Sarwar Bakelite Industry Azam Market	3715270	Electric Goods	1994	1000	10	Switches	400 Th. Rs.
221	Shahid Bakelite Industry Block No.21		Electric Goods	1994	1000	10	Switches	300 Th. Rs.
222	Shakia Industry B-15 Sie		Electric Goods	1990	1000	10	Switches	100 Th. Rs.
223	Shanghai China Bakelite Industry Block No.23 Main Road	3714740	Electric Goods	1994	1200	15	Switches	500 Th. Rs.
224	Sharja Bakelite Industries Faisal Town		Electric Goods	1994	800	9	Switches	100 Th. Rs.
225	Sohail Screw Industry St. No.4 Kot Fareed		Electric Goods	1994	200	5	Switches	150 Th. Rs.
226	Stylesh Bakelite Industry Water Supply Road		Electric Goods	1980	1000	8	Switches	400 Th. Rs.
227	Super Emco Bakelite Industry Ghosia St. Makam-E-Hayat	3714505	Electric Goods	1983	1200	10	Switches	300 Th. Rs.
228	Supreem Bakelite Industry Block No.29	3716392	Electric Goods	1995	1000	8	Switches	300 Th. Rs.
229	Tanveer Ahmed Electronic Goods Factory Muhammadia Colony	3715967	Electric Goods	1992	1000	10	Switches	400 Th. Rs.

Sr. No.	Name / Address of unit	Phone No. / Website	Industry	Estb. Year	Investment (Th.Rs.)	Emp	Product	Annual Installed Capacity
230	Tip Top Bakelite Industry Muhammadia Colony		Electric Goods	1994	1100	10	Switches	400 Th. Rs.
231	Waheed Bakelite Industry Iqbal Colony		Electric Goods	1994	1000	6	Switches	400 Th. Rs.
232	Waris Butt Screw Industry Thana Urban Area		Electric Goods	1985	450	6	Switches	500 Th. Rs.
233	Welco Electrical Accesories St.No. 2 Azam Park		Electric Goods	1994	1000	5	Switches	500 Th. Rs.
234	Welcome Bakelite Industry St. No.7 Kot Fareed		Electric Goods	1990	1000	8	Switches	500 Th. Rs.
235	Zahid Electric Company St. No.10 Block No.29	3712015	Electric Goods	1994	1000	8	Switches	400 Th. Rs.
236	Zulfiqar Ahmed Bakelite Industry Millatabad		Electric Goods	1994	1000	8	Switches	300 Th. Rs.
237	Zulfiqar Bakelite Industry St. No.4 Kot Fareed	3711156	Electric Goods	1994	1000	10	Switches	500 Th. Rs.
238	Allied Industries Millatabad	3210393	Fans/Coolers	1982	2500	10	Air Coolers / Electric Gysers	1000 Nos.
239	Ashraf Electronic Industry Opp:Bus Stand		Fans/Coolers	1990	1500	16	Air Coolers	1000 Nos.

Sr. No.	Name / Address of unit	Phone No. / Website	Industry	Estb. Year	Investment (Th.Rs.)	Emp	Product	Annual Installed Capacity
240	Diamond Room Cooler Millatabad	3217996	Fans/Coolers	2001	900	6	Air Coolers / Electric Gysers	500 Nos.
241	Hafiz Cooler & Water Gysar College Road	3222884	Fans/Coolers	2001	2200	9	Air Coolers / Electric Gysers	1000 Nos.
242	Haroon Brothers D-566 Sie		Fans/Coolers	1995	525	6	Air Coolers	500 Nos.
243	Ideal Room Cooler Millatabad	3215181	Fans/Coolers	1999	1100	8	Air Coolers / Electric Gysers	1000 Nos.
244	Mehran Room Cooler And Electric Gysar Eid-Gah Road	3713187	Fans/Coolers	1999	2800	10	Air Coolers / Electric Gysers	1000 Nos.
245	Mughal Star Room Cooler & Gysar Eid Gah Road	3713187	Fans/Coolers	1998	1000	7	Air Coolers / Gysers	500 Nos.
246	New Lord Room Cooler Bus Stand Road	3214470	Fans/Coolers	2002	2500	10	Air Coolers / Electric Gysers	1200 Nos.
247	Pak National Industries Millatabad, Satellite Town Road	3210930	Fans/Coolers	2000	2000	9	Air Coolers / Electric Gysers	700 Nos.
248	Samawar Industry Millatabad	3210930	Fans/Coolers	1990	2300	8	Air Coolers / Electric Gysers	1000 Nos.
249	Super Asli Lahore Room Cooler And Gysar College Road	0300-4414110	Fans/Coolers	2002	13000	9	Air Coolers	1000 Nos.
250	Awami Flour Mills Chak 8, Bhalwal	644664	Flour Mills	1971	8000	C	Flour	80 M.Tons /Day
251	Fazal Flour Mills (Pvt) Ltd. Sargodha Road, Bhalwal	6642639	Flour Mills	1993	15000	24	Flour	160 M.Tons /Day

Sr. No.	Name / Address of unit	Phone No. / Website	Industry	Estb. Year	Investment (Th.Rs.)	Emp	Product	Annual Installed Capacity
252	Hayat Flour Mills Factory Area Colony	3721067	Flour Mills	1929	15000	27	Flour	160 M.Tons /Day
253	Kissan Flour Mills Khushab Sargodha Rd	3728806	Flour Mills	1990	15000	21	Flour	120 M.Tons /Day
254	Makhdoom Flour Mills 33-Km Lahore Road	3714382, 3714385	Flour Mills	1994	14000	C	Flour	120 M.Tons /Day
255	National Food & Dal Mills Rehmanpura	3710966	Flour Mills	1970	16000	26	Flour	120 M.Tons /Day
256	New Pak Food Products Kot Fareed	3714163	Flour Mills	1962	18000	30	Flour	220 M.Tons /Day
257	Rehman Flour Mills Sargodha Khushab Road Shahpur	3711922	Flour Mills	1995	10000	18	Flour	100 M.Tons /Day
258	Sardar Flour Mills Kabari Bazar	3713386	Flour Mills	1980	15000	26	Flour	160 M.Tons /Day
259	Sargodha Food Products Kabar Khana Road New Civil Lines	3710805	Flour Mills	1964	13000	23	Flour	80 M.Tons /Day
260	Sargodha Oil And Flour Mills Baghtanwala Road Near Sie	3213527	Flour Mills	1982	18000	28	Flour	220 M.Tons /Day
261	Shama Food Products Sillianwali Road Factory Area	3724072	Flour Mills	1985	15000	19	Flour	140 M.Tons /Day
262	Asgar Matel Casting Factory Iqbal Colony		Foundry Products	1993	350	8	Casting Material	25 M.Tons
263	Ibraheem Foundry Casting New Factory Area	3723708	Foundry Products	1985	500	8	Casting Material	40 M.Tons

Sr. No.	Name / Address of unit	Phone No. / Website	Industry	Estb. Year	Investment (Th.Rs.)	Emp	Product	Annual Installed Capacity
264	Ramzan Matle Casting Water Supply Road		Foundry Products	1992	300	6	Casting Material	30 M.Tons
265	Rana Muhammad Ashraf Brass Costing, Gulshan Jamal Colony	3714257	Foundry Products	1994	650	12	Casting Material	80 M.Tons
266	Rana Muhammad Ashraf Metal Casting St. Ghalab Shah Rehmanpur No.2		Foundry Products	1996	600	8	Metal Products	40 M.Tons
267	Rehmat Ullah Foundry Casting New Factory Area	632498	Foundry Products	1985	550	9	Casting Material	50 M.Tons
268	Riaz Metal Casting, Water Supply Road		Foundry Products	1993	300	6	Casting Material	40 M.Tons
269	Ittefaq Glass Factory, C-31-32 SIE		Glass & Glass Products	1995	1900	10	Glass And Glass Products	1500 M.Tons
270	Soon Valley Poultry Breeder. B-21 SIE		Hatchery	1991	2000	8	Chicks	500000 Nos.
271	Ahsan Shoes Industries Urban Area		Leather Footwears	1989	1200	14	I.M. Shoes	50000 Pairs
272	Araien Shoes Factory Nazir Colony	3717012	Leather Footwears	1994	1000	C	I.M. Shoes	20000 Pairs
273	Arshid Shoes Factory Nazir Colony		Leather Footwears	1993	1000	20	I.M. Shoes	40000 Pairs
274	City Shoes Factory Behind Kabari Bazar	3713327	Leather Footwears	1991	1365	28	I.M. Shoes	20000 Pairs

Sr. No.	Name / Address of unit	Phone No. / Website	Industry	Estb. Year	Investment (Th.Rs.)	Emp	Product	Annual Installed Capacity
275	Climax Shoes Factory Rehmanpur	3710778	Leather Footwears	1994	1100	25	I.M. Shoes	25000 Pairs
276	Hameed Sindhi Shoes Factory Maqum-A-Hayat		Leather Footwears	1992	1000	16	I.M. Shoes	25000 Pairs
277	Kashmir Foot Wears Factory Block No.27	3717938	Leather Footwears	1994	1400	C	I.M. Shoes	40000 Pairs
278	Khan Shoes Factory Block No.29	3712314	Leather Footwears	1995	1200	C	I.M. Shoes	30000 Pairs
279	Liaqat Shoes Factory Rehmanpura		Leather Footwears	1994	1000	C	I.M. Shoes	20000 Pairs
280	Maqbool Ahmad Shoes Factory Rehmanpura		Leather Footwears	1994	1200	C	I.M. Shoes	12000 Pairs
281	Maqbool And Co; (Foom Shoes) Block No.33	3713067	Leather Footwears	1993	1500	C	I.M. Shoes	30000 Pairs
282	Munir Shoes Factory Kamboh Colony		Leather Footwears	1994	400	8	I.M. Shoes	5000 Pairs
283	New Shalimar Shoes Factory Sulman Colony	3714243	Leather Footwears	1993	1300	18	I.M. Shoes	10000 Pairs
284	Orion Shoes Factory Rehmanpura		Leather Footwears	1993	1000	C	I.M. Shoes	25600 Pairs
285	Prince Shoes Factory Kabari Bazar	33713553	Leather Footwears	1987	1200	12	I.M. Shoes	25000 Pairs
286	Raja Shoes Factory Iqbal Colony	3715104	Leather Footwears	1994	15000	C	I.M. Shoes	50000 Pairs
287	Rana Khalid & Ikram Shoes Factory Area	3722013	Leather Footwears	1994	600	C	I.M. Shoes	22000 Pairs

Sr. No.	Name / Address of unit	Phone No. / Website	Industry	Estb. Year	Investment (Th.Rs.)	Emp	Product	Annual Installed Capacity
288	Sarwan Shoes Factory Kamboh Colony	3716959	Leather Footwears	1990	1000	C	I.M. Shoes	40000 Pairs
289	Shabeer Shoes Factory Shaheenabad Road Istaklabad		Leather Footwears	1994	900	8	I.M. Shoes	20000 Pairs
290	Ak Auto Engineering Works Chak No.46 Lahore Road	3213846	Light Engineering	1994	400	8	Crank Shafts	6000 Nos.
291	Al-Ghazi Agricultural Works, Kabbari Bazar	3714721	Light Engineering	1990	1200	10	Crank Shafts	1000 Nos.
292	Almonium Steel Point Near Khayam Cinema	3215765	Light Engineering	1993	1800	10	Steel Furniture	2000 Th. Rs.
293	Aluminum Steel Style 2 Lalazar Colony College Road	3723807	Light Engineering	1991	1500	12	Steel Furniture	1400 Th. Rs.
294	Falcon Engineering Works Kenchi More	3212700	Light Engineering	1994	1200	8	Crank Shafts	1000 Nos.
295	Khurshid Enterprises Punjab Small Industries Corp.	3212366	Light Engineering	2001	3000	10	Crank Shafts	1500 Nos.
296	Millat Engineering B-14 Sie		Light Engineering	1993	2000	8	Crank Shafts	5000 Nos.
297	Millat Engineering Works B-14 Sie	3212993	Light Engineering	1994	2000	9	Crank Shafts	1200 Nos.

Sr. No.	Name / Address of unit	Phone No. / Website	Industry	Estb. Year	Investment (Th.Rs.)	Emp	Product	Annual Installed Capacity
298	Moon Agricultural Industry Kabbari Bazar	3716534	Light Engineering	2001	1200	10	Crank Shafts	1000 Nos.
299	Nusrat Industries C-11 Sie		Light Engineering	1995	1406	14	Crank Shafts	4000 Nos.
300	Pak-Shaheen Agricultural Implement 5-K.M.Lahore Road	3212501	Light Engineering	1994	1800	10	Crank Shafts	1000 Nos.
301	Royal Pak Industries Chak 46 Lahore Road	3213846	Light Engineering	1994	1500	21	Crank Shafts	1500 Nos.
302	Sun Steel Industries Lahore Road	3514683	Light Engineering	2000	6000	15	Crank Shafts	3000 Nos.
303	Super Shaheen Engineers General Bus Stand	3214927	Light Engineering	1993	1800	8	Crank Shafts	1000 Nos.
304	Tahir Engg Works Liaquat Colony		Light Engineering	1985	180	8	Crank Shafts	4000 Nos.
305	Tariq Steel Point College Road	3216480	Light Engineering	1991	1200	8	Steel Furniture	1150 Th. Rs.
306	Ahmed Package Corrugated Boxes Factory Area	3723913	Packages	1993	500	9	Corrugated Box	500000 Nos.
307	Khawaja Packages Inside Sargodha Cotton Mills		Packages	1994	600	10	Corrugated Box	700000 Nos.
308	Sargodha Packages Corrugated Boxes Factory Area		Packages	1993	480	7	Corrugated Box	500000 Nos.

Sr. No.	Name / Address of unit	Phone No. / Website	Industry	Estb. Year	Investment (Th.Rs.)	Emp	Product	Annual Installed Capacity
309	Asif Paints Industries New Civil Line	3727363	Paints And Varnishes	1994	800	6	Paints	35000 Litres
310	Imran Paint Industry Gillwala Road Zafar Colony	3713867	Paints And Varnishes	2002	1600	10	Paints	30000 Litres
311	Kamal Paints Industries Street 5 Muhammadi Colony	3714586	Paints And Varnishes	1998	2000	10	Paints, Varnish	50000 Litres, 10000 Litres
312	Kashif Paint Industry Factory Area	3721840	Paints And Varnishes	2001	1700	8	Paints	30000 Litres
313	Mobeen Paints Industry Ikram Colony	3710739	Paints And Varnishes	2002	2200	10	Paints	30000 Litres
314	Shan Paints And Varnishes, Fatima Jinnah Road	3715257	Paints And Varnishes	1991	1500	8	Paints	40000 Litres
315	Sohail Paints Industry Block F, Zafar Colony	3718327	Paints And Varnishes	2001	1800	9	Paints, Varnish	40000 Litres, 12000 Litres
316	Yasir Paints Ikram Colony	3713922	Paints And Varnishes	1985	1100	10	Paints	50000 Litres
317	Diamond Paper And Board Mills (Pvt) Ltd. 8-Km Faisalabad Road	6750258, 6750803	Paper And Paper Board	1994	10000	40	Fluting Paper	3250 M.Tons
318	Amgill (Pvt) Ltd. 10 Km. Faisalabad Road	3213621	Pesticides / Insecticides	1980	5000	C	Pesticides /Insecticides	2000 M.Tons
319	Arshad Plastic Insutries Rehmanpura Road	3713920	Plastic Products	1992	500	8	Plastic Products	200 M.Tons

Sr. No.	Name / Address of unit	Phone No. / Website	Industry	Estb. Year	Investment (Th.Rs.)	Emp	Product	Annual Installed Capacity
320	Delux Battery Cover Maker Muhammadia Colony		Plastic Products	1994	300	5	Plastic Products	500 M.Tons
321	Faran P.V.C.Limited. B-26 Sie,		Plastic Products	1995	400	6	Plastic Products	35 M.Tons
322	Farooq Battery Cover, B551 Madni Masjid Factory Area		Plastic Products	1994	300	8	Plastic Products	40 M.Tons
323	Farooq Industries Millatabad	3217131	Plastic Products	1991	400	8	Bakelite Sheet /Powder	30 M.Tons
324	Hamad Enterprises C-6 Sie		Plastic Products	1996	500	8	Plastic Products	35 M.Tons
325	Hameed P.V.C.Factory, Kamboh Colony		Plastic Products	1990	500	8	Plastic Products	40 M.Tons
326	Hamid P.V.C. Factory Kamboh Colony		Plastic Products	1993	400	6	Plastic Products	80 M.Tons
327	Ittefaq Bakelite Powder Industries, Factory Area	3741865	Plastic Products	1988	500	12	Bakelite Sheet /Powder	40 M.Tons
328	Javaid Battery Cover Factory, Near Madni Masjid Factory Area		Plastic Products	1994	350	8	Plastic Products	60 M.Tons
329	Javaid Plastic Factory Opposite DHQ. Hospital		Plastic Products	1993	200	9	Plastic Shoes	100000 Pairs
330	N.S.Plastic Industries New Factory Area	3723376	Plastic Products	1994	1180	13	Plastic Shoes	150000 Pairs
331	Sargodha Plastic C-23 Sie		Plastic Products	1995	440	8	Plastic Products	55 M.Tons

Sr. No.	Name / Address of unit	Phone No. / Website	Industry	Estb. Year	Investment (Th.Rs.)	Emp	Product	Annual Installed Capacity
332	Raja Feeds Industry Bhalwal Ajnala Road	3214580	Poultry Feed	1992	1500	7	Poultry Feed	500 M.Tons
333	Sargodha Feed Mills Bhalwal Ajnala Road	3216426	Poultry Feed	1993	8000	11	Poultry Feed	500 M.Tons
334	Sunflo Cit-Russ Ltd. Chak No. 54 Nb, Bhalwal Road	3712201	Preservation Of Fruit /Vegetable	1988	460000	C	Preservation Of Fruit /Vegetable	5000 M.Tons
335	Al-Ammar Light Engineering. C-57, Sie,		Pvc Pipe	1993	1800	6	Pvc Pipes	12000 M.Tons
336	Idrees Garments, A-9 Sie		Readymade Garments	1998	500	10	Readymade Garments	7 Machines
337	Awan Rice Mills Factory Area	3723391	Rice Mills	1970	4000	26	Rice	1 Sheller
338	Baba Rice Mills Ckak No.79/Sb		Rice Mills	1988	2000	15	Rice	1 Sheller
339	Babar Corporation Rice Mills Lahore Road		Rice Mills	1980	3550	8	Rice	1 Sheller
340	Bashir Ali Rice Mills Zafar Colony		Rice Mills	1991	850	15	Rice	1 Sheller
341	Ch. Rice Mills Shah Nikdar		Rice Mills	1989	2000	15	Rice	1 Sheller
342	Friends Rice Mills 14-K.M.Faisalabad Road	3791281	Rice Mills	1984	2800	15	Rice	1 Sheller
343	Guraya Rice Mills Zafar Colony		Rice Mills	1980	2000	15	Rice	1 Sheller
344	M.Iqbal Rice Mills Zafar Colony		Rice Mills	1979	2000	15	Rice	1 Sheller

Sr. No.	Name / Address of unit	Phone No. / Website	Industry	Estb. Year	Investment (Th.Rs.)	Emp	Product	Annual Installed Capacity
345	M.Manzoor Rice Mills Factory Area		Rice Mills	1970	3000	30	Rice	1 Sheller
346	M.Nasir Rice Mills Factory Area		Rice Mills	1974	3000	35	Rice	1 Sheller
347	Malik Rice Sheller Near Farooqa		Rice Mills	1988	1000	10	Rice	1 Sheller
348	Maqbool Shah Rice Mill Farooqa Road		Rice Mills	1974	1500	10	Rice	1 Sheller
349	Mehar Din Rice Mills Bajwa Colony		Rice Mills	1989	2000	15	Rice	1 Sheller
350	Mian Zia-U-Din Rice Mills Chak 40/NB		Rice Mills	1977	1500	30	Rice	1 Sheller
351	New Hamdard Rice Mills Chak 40 Zafar Colony	3212780	Rice Mills	1994	3500	14	Rice	1 Sheller
352	Omni Rice Mills, Gujrat Bhalwal Road, Mouza Salam	0303-7757363	Rice Mills	2002	90000	31	Rice	1 Sheller
353	Qasir Rice Mills, Baghtanwala Road		Rice Mills	1976	400	4	Rice	1 Sheller
354	Rahoof Shah Rice Mills Zafar Colony	3721820	Rice Mills	2000	3500	10	Rice	1 Sheller
355	Rajput Rice Mills Chak Baghtanwala		Rice Mills	1978	355	6	Rice	1 Sheller
356	Rana Rice Mills Factory Area	3727633	Rice Mills	1974	3500	21	Rice	1 Sheller
357	Shahid Iqbal Rice Mills Zafar Colony	3712366	Rice Mills	1979	3000	13	Rice	1 Sheller
358	Sheikh Ishaq Rice Mills Rehmanpura		Rice Mills	1978	1900	15	Rice	1 Sheller

Sr. No.	Name / Address of unit	Phone No. / Website	Industry	Estb. Year	Investment (Th.Rs.)	Emp	Product	Annual Installed Capacity
359	Subtain Khan Baloch Rice Mills Jhang Road Sahiwal		Rice Mills	1982	1800	10	Rice	1 Sheller
360	Taj Rice Mills Zafar Colony	3713866	Rice Mills	1992	2500	26	Rice	1 Sheller
361	Akhtar Soap Factory Block No.24	3717582	Soap & Detergent	1975	2000	11	Washing Soap	100 M.Tons
362	Akram Soap Factory Burhan Colony	3713145	Soap & Detergent	1988	1000	C	Washing Soap	50 M.Tons
363	Al-Khawar Soap Factory, Factory Area	3723789	Soap & Detergent	1993	1200	6	Washing Soap	100 M.Tons
364	Al-Mujahid Soap Factory Sherazi Park Rehmanpura	3713663	Soap & Detergent	1994	2100	10	Washing Soap	80 M.Tons
365	Amer Soap Factory, Factory Area	366201	Soap & Detergent	1990	1800	9	Washing Soap	100 M.Tons
366	Amin Soap Factory, Factory Area	3723647	Soap & Detergent	1948	3500	13	Washing Soap	200 M.Tons
367	Army Soap Sillanwali Road Factory Area	3718724	Soap & Detergent	1999	3200	12	Washing Soap	300 M.Tons
368	Azad Kashmir Soap Factory Block No.27	3713745	Soap & Detergent	1980	1200	5	Washing Soap	60 M.Tons
369	Azad Kashmir Soap Factory Sillanwali Rd	3723359	Soap & Detergent	1992	1100	C	Washing Soap	200 M.Tons
370	Azad Wattan Soap Factory, Factory Area	662172	Soap & Detergent	1965	3000	C	Washing Soap	200 M.Tons
371	China Soap Factory, Factory Area	3722361	Soap & Detergent	1981	7500	27	Washing Soap	400 M.Tons
372	Farooq Soap Factory Muhammadi Colony	3741982	Soap & Detergent	1993	1100	C	Washing Soap	80 M.Tons

Sr. No.	Name / Address of unit	Phone No. / Website	Industry	Estb. Year	Investment (Th.Rs.)	Emp	Product	Annual Installed Capacity
373	Ghosia Soap Factory Ghosia Chowk	3716220	Soap & Detergent	1994	2500	7	Washing Soap	150 M.Tons
374	Hadi Ameen Soap Sillanwali Rd Factory Area	3723647	Soap & Detergent	1994	4500	13	Washing Soap	200 M.Tons
375	Hamdard Soap Factory Block No.1	662852	Soap & Detergent	1984	1200	5	Washing Soap	60 M.Tons
376	Haram Soap Factory Mehboob Cotton Factory Factory Area	3728553	Soap & Detergent	2003	4000	13	Washing Soap	200 M.Tons
377	Imran Soap Factory, Factory Area	3723489	Soap & Detergent	1994	1500	10	Washing Soap	150 M.Tons
378	Insaf Soap Factory, Factory Area	3740717	Soap & Detergent	1968	4000	6	Washing Soap	200 M.Tons
379	Kareem Soap Sillanwali Road Factory Area	3724239	Soap & Detergent	1980	8000	23	Washing Soap	400 M.Tons
380	Khizar Soap Factory, Muhammadi Colony	3726492	Soap & Detergent	1999	1500	10	Washing Soap	150 M.Tons
381	Khuram Soap Factory, Factory Area	3740360	Soap & Detergent	1992	1000	7	Washing Soap	100 M.Tons
382	Mahboob Soap Factory, Factory Area	3728725	Soap & Detergent	1965	1000	8	Washing Soap	100 M.Tons
383	Naseem Soap Factory Chak 79 Sillanwali Road	3726894	Soap & Detergent	2001	8500	19	Washing Soap	400 M.Tons
384	Naveed Soap Factory Block No.25	3723056	Soap & Detergent	1992	1000	6	Washing Soap	60 M.Tons
385	Nazeer Soap Factory, Factory Area	3724017	Soap & Detergent	1993	1500	C	Washing Soap	150 M.Tons

Sr. No.	Name / Address of unit	Phone No. / Website	Industry	Estb. Year	Investment (Th.Rs.)	Emp	Product	Annual Installed Capacity
386	New Akstar Soap Factory Muhammadi Colony	3717582	Soap & Detergent	2000	800	8	Washing Soap	100 M.Tons
387	New Faisal Soap Factory Muhammadi Colony	3715636	Soap & Detergent	1993	1000	6	Washing Soap	100 M.Tons
388	New Intakhab Soap Factory Area	371004	Soap & Detergent	1994	1200	7	Washing Soap	100 M.Tons
389	New Light Soap Factory, Factory Area	3723056	Soap & Detergent	1976	1500	7	Washing Soap	150 M.Tons
390	New Punjab Soap Factory, Factory Area, Sillanwali Road	3724152	Soap & Detergent	1948	3000	8	Washing Soap	200 M.Tons
391	New Qazi Soap Factory Block No.2	663743	Soap & Detergent	1985	1200	5	Washing Soap	60 M.Tons
392	New Shahdab Soap Factory, Chowk Muhammadi Colony	3712939	Soap & Detergent	1994	2000	13	Washing Soap	150 M.Tons
393	New Shaheen Soap Factory Water Supply Road	3717192	Soap & Detergent	1978	2000	5	Washing Soap	100 M.Tons
394	Popular Soap Factory Factory Area	0300-9606114	Soap & Detergent	1967	2000	8	Washing Soap	150 M.Tons
395	Prince Soap Factory Factory Area	665889	Soap & Detergent	1980	4500	14	Washing Soap	200 M.Tons
396	Qasim Soap Factory Chak 79 Sillanwali Road	3727314	Soap & Detergent	1990	2500	20	Washing Soap	150 M.Tons
397	Sadiq Soap Factory Block No.7	3722794	Soap & Detergent	1992	1200	7	Washing Soap	100 M.Tons

Sr. No.	Name / Address of unit	Phone No. / Website	Industry	Estb. Year	Investment (Th.Rs.)	Emp	Product	Annual Installed Capacity
398	Shan Industriels Factory Area	662935	Soap & Detergent	1996	1100	6	Washing Soap	85 M.Tons
399	Tanveer Soap Factory Area	3723344	Soap & Detergent	1989	5000	16	Washing Soap	200 M.Tons
400	Yousaf Soap Factory Muhammadi Colony	3711259	Soap & Detergent	1998	1100	9	Washing Soap	125 M.Tons
401	Zia Soap Factory C-I Psic Estate	3712212	Soap & Detergent	1996	500	5	Washing Soap	60 M.Tons
402	China Chemical Silanwali Road	3721139	Sodium Silicate	1993	1500	5	Sodium Silicate	2000 M.Tons
403	Al Habib Sons New Factory Area	3724808	Spices Factory	1992	1100	9	Spices	100 M.Tons
404	Najam Spices Factory Mohni Road Shaheenabad Road	3721103	Spices Factory	1993	1200	11	Spices	150 M.Tons
405	Abdullah Sugar Mills Ltd., Meharajabad, Shahpur	048-6310601-4	Sugar	1995	750000	620	Sugar	8000 Tcd
406	Chishtia Sugar Mills Ltd., Farooqa, Silanwali	6788392-3	Sugar	1990	507144	213	Sugar	7000 Tcd
407	National Sugar Mills Ltd., Sial More, Mouza Jan Muhammad Wala, Bhalwal	6886281-3	Sugar	1989	778850	817	Sugar	6000 Tcd
408	Noon Sugar Mills Ltd., Bhalwal	6642411-2	Sugar	1964	467003	1112	Sugar, Siprit	3000 Tcd, 60 Th. Litres /Day

Sr. No.	Name / Address of unit	Phone No. / Website	Industry	Estb. Year	Investment (Th.Rs.)	Emp	Product	Annual Installed Capacity
409	Arif Tannery Bhalwal / Ajnala Sargodha Road		Tannery	1983	1200	5	Leather	100000 Sq.Ft
410	Ashraf Tannery, Ajnala / Bhalwal, Sargodha Road		Tannery	1986	1100	5	Leather	100000 Sq.Ft
411	Kaf Leather (Pvt) Ltd. 14- Km Faisalabad Road	3791201-2	Tannery	1994	1500	C	Leather	700000 Sq.Ft
412	Maqbool Tannery, Ajnala Road		Tannery	1992	2500	6	Leather	120000 Sq.Ft
413	Ramzan Tannery Bhalwal/Ajnala Sargodha Road		Tannery	1988	1000	7	Leather	100000 Sq.Ft
414	Shaheen Tannery Church Road Near Noori Gate	3720927	Tannery	1988	6000	8	Leather	100000 Sq.Ft
415	Sheikh Tannery Bhalwal Ajnala Road		Tannery	1989	1100	5	Leather	80000 Sq.Ft
416	Waqar Tannery Ajnala Bhalwal Road		Tannery	1988	1200	7	Leather	100000 Sq.Ft
417	Sargodha Textiel Mills Ltd, Faisalabad Road Sargodha	3720084- 85	Textile Composite	1951	563148	1035	Yarn , Cloth	43024 Spindles , 224 Looms

Sr. No.	Name / Address of unit	Phone No. / Website	Industry	Estb. Year	Investment (Th.Rs.)	Emp	Product	Annual Installed Capacity
418	Awais Qurni Spinning Mills (Pvt) Ltd, 27-Km Fasilabad Road	6610661	Textile Spinning	1992	150000	2360	Cotton Yarn	1800 Rotors
419	Azam Raza Textile Mills Ltd 12-Km Sargodha Road	3215001	Textile Spinning	1997	100000	150	Cotton Yarn	5000 Spindles
420	Noon Textile Mills Ltd. Gujrat Road Bhalwal	44411-12	Textile Spinning	1968	20000	278	Cotton Yarn	16100 Spindles
421	Piracha Cotton Factory, Faisalabad Rd	3750356	Textile Spinning	2000	4500	41	Cotton Yarn	400 Rotors
422	Shaheen Cotton Factory 7Km Faisalabad Rd	3750417	Textile Spinning	1988	8500	62	Cotton Yarn	1000 Rotors
423	Taymur Spinning Mills (Pvt) Ltd 28 Km. Lahore Rd Baghtanawal	3780156-7	Textile Spinning	1992	177193	333	Cotton Yarn	14400 Spindles
424	Tayab Laboratory St.3 Manzoor Hayat Colony Bhalwal		Unani Medicines	1993	1010	C	Unani Medicines	40 Lac. Rs.
425	Khiaban Ghee Mills (Pvt) Ltd Lahore Faisalabad Road By Pass Road	042-5839634	Vegetable Ghee And Cooking Oil	1992	36200	C	Vegetable Ghee	18000 M.Tons
426	National Ghee Mills Sargodha Bhalwal Road Ganula Bhalwal	3722505	Vegetable Ghee And Cooking Oil	1995	30000	C	Vegetable Ghee/ Cooking Oil	36000 M.Tons

Source: Directorate of Industries, Punjab



## LIST OF CONTACT NUMBERS

### *Directorate of Industries Punjab*

Director Industries, Punjab	Tel: +92 (42)-99211520-1 Fax: +92 (42)-99211522 dipunjab@gmail.com
Additional Director Industries	Tel: +92 (42)-99211531 +92 (42)-99212752 Fax: +92 (42)-99212753
Joint Director (Development)	Tel: +92 (42)-99211526
Senior Economist	Tel: +92 (42)-99211533
Staff Economist	Tel: +92 (42)-99211534
Deputy Director (Admin)	Tel: +92 (42)-99211528
Deputy Director (Development)	Tel: +92 (42)-99211528
Deputy Director (Planning)	Tel: +92 (42)-99211530
Assistant Director (Admin)	Tel: +92 (42)-99211529
Assistant Director (Planning)	Tel: +92 (42)-99211530
Assistant Director (Statistics)	Tel: +92 (42)-99211524
Assistant Registrar	Tel: +92 (42)-99211523
Librarian	Tel: +92 (42)-99213010
District Officer (E&IP), Sargodha	Tel: +92 (48)-9230503

### *Other Relevant Departments*

Department	Contact
Secretary, Industries, Commerce & Investment Department, Govt. of the Punjab	Tel: +92 (42) 99210534-5 Fax: +92 (42) 99210536
Chamber of Commerce & Industry Sargodha	Tel: +92 (48) 9230833-4 Fax: +92 (48) 9230835 info@scci.pk
Punjab Board of Investment & Trade (PBIT)	Tel: +92 (42) 99205201 info@pbit.gop.pk
Small & Medium Enterprises Development Authority (SMEDA)	Tel: +92(42)-111-111-456 Fax: +92 (42) 36304926-7 info@smeda.org.pk

---

Punjab Industrial Estates Development and Management Company (PIEDMC)	Tel: +92 (42) 35297203-6 Fax: +92 (42) 35297207 info@pie.com.pk
Punjab Small Industries Corporation (PSIC)	Tel: +92 (42) 99200453

## BIBLIOGRAPHY

- Punjab Development Statistics 2011, Bureau of Statistics, Government of the Punjab
- The Urban Unit, Planning & Development Department, Government of the Punjab.
- Technical Education and Vocational Training Authority
- Chief Inspector of Boilers, Directorate of Industries, Punjab
- Directorate of Agriculture, Crop Reporting Service, Punjab
- Chief Conservator of Forest Planning, Monitoring and Evaluation, Punjab
- Directorate General (Ext), Livestock & Dairy Development Punjab
- Directorate General Mines & Minerals, Punjab
- Punjab Small Industries Corporation
- Punjab Industrial Estates Development and Management Company
- Faisalabad Industrial Estates Development and Management Company
- Industries, Commerce & Investment Department, Government of the Punjab
- District Officers (Enterprise & Investment Promotion) as well as District Administration
- Export Processing Zones Authority
- Board of Investment, Government of Pakistan
- Website of Stat Bank of Pakistan
- Ministry of Commerce, Govt. of Pakistan
- Directory of Industrial Establishments Punjab, Directorate of Industries, Punjab

