

# District Pre-Investment Study - 2012

---

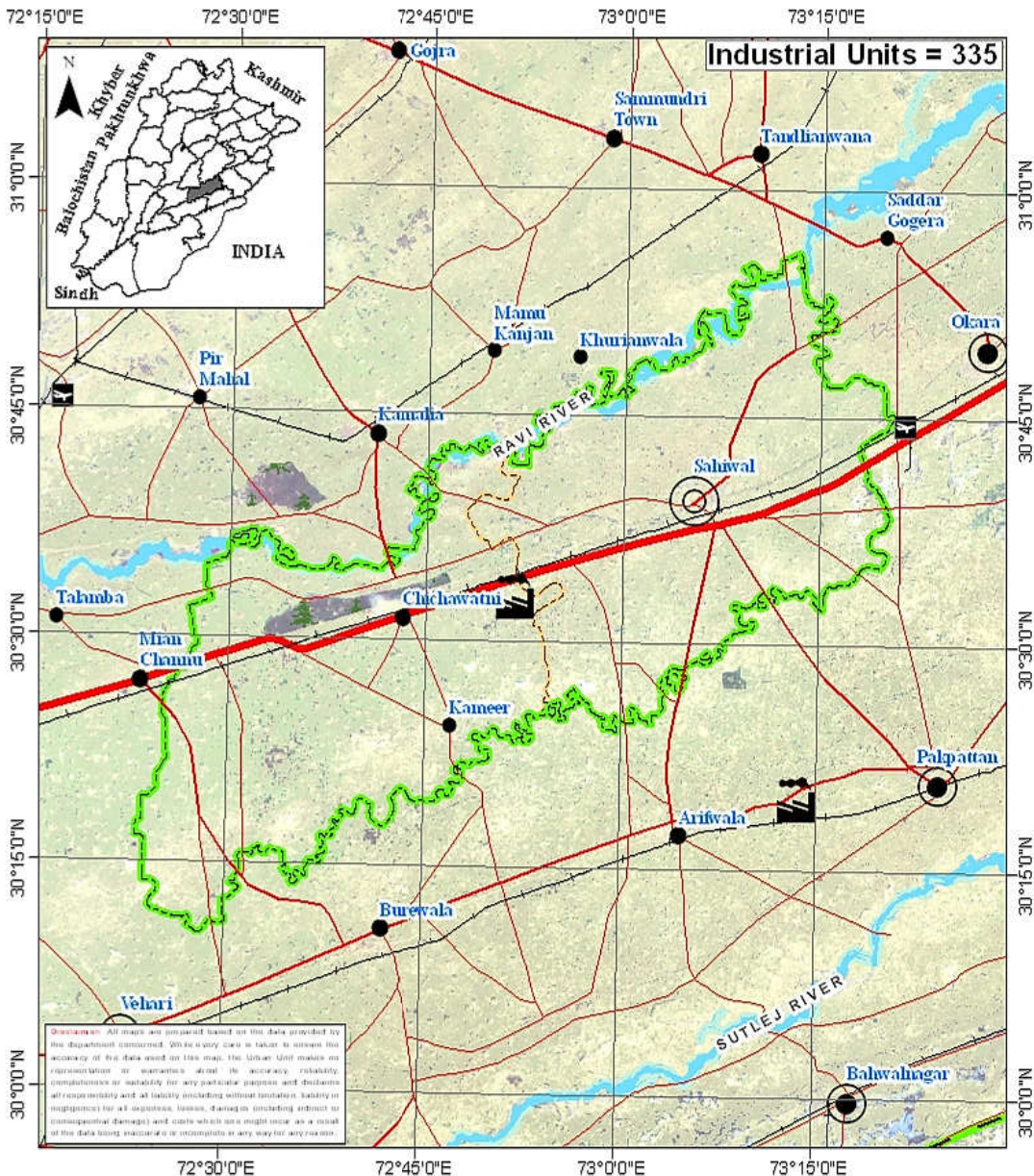
Sahiwal



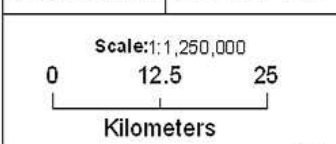
---

Directorate of Industries, Punjab  
Poonch House, Multan Road, Lahore.

# District Sahiwal



Map No.: SHW-01      Date: 21-01-2013



Legend		Transportation:	Landuse:
Provincial Boundary	District Boundary	Motorway	River
Tehsil Boundary	Divisional Headquarter	Provincial Highway	Agricultural Land
District Headquarter	Tehsil Headquarter	Primary Road	Forest
Tehsil Headquarter		Intercity Road	Industrial Estate
		Pakistan Railway	
		Airport	

## Director's Message

After spending past two years in Directorate of Industries, Punjab, I feel very privileged to be writing this message as Director Industries, Punjab.



This is the time we publish the 7<sup>th</sup> edition of the District Pre-Investment Studies of 36 Districts of Punjab, which has now become synonymous with our commitment to helping Industrialists, new entrepreneurs as well as Researchers. As Director Industries Punjab, I have seen much change, like:

- Relocation plan for the industrial units located within residential areas to industrial estates / positive areas declared by the District Governments.
- Adaptation of Boilers & Pressure Vessels Ordinance 2002.
- Conduct of Census of Manufacturing Industries.
- A scheme "Improvement and Up-gradation of Boilers Inspection Wing" has been approved by the Planning & Development Department, Government of the Punjab with the cost of Rs.10 Million.
- A Scheme "Sports Goods and Material Testing Laboratory" is under process in Planning & Development Department, Government of the Punjab. The estimated cost of the scheme is Rs.450 Million.
- The proposal for Capacity Building of Directorate of Industries Punjab is under process in Industries, Commerce & Investment Department, Government of the Punjab with the estimated cost of Rs.109.75 Million.
- We launch our website [www.doi.pitb.gov.pk](http://www.doi.pitb.gov.pk).

Looking ahead, we are focused on accelerating the execution of growth and promote industrial investment in the province. I am incredibly excited about this and truly believe the best of time for industrial investment is yet to come, Insha Allah.

**(Muhammad Siddique Sheikh)**  
Director Industries, Punjab

## Preface

Pre-investment studies for the districts in the Punjab were first published by the Directorate of Industries and Mineral Development, Punjab in the year 1979, with the prime objective of providing data which might interest private entrepreneurs and the framers of the Provincial and National Strategies in the industrial sector.

The second, third, fourth, fifth and sixth series of Pre-investment Studies for all districts of Punjab were published in 1983, 1992, 2002, 2006 and 2009 respectively. The present edition is seventh in the series.

This study basically updates the information contained in sixth series of district pre-investment studies. Efforts have been made to provide latest information collected through published sources, offices of the respective Government Departments/Agencies and District Offices of Industries Department. Quality addition of Industrial Policy Framework, recently promulgated Special Economic Zone Act 2012, Strategic Trade Policy Framework (2012-15) and Digital Maps by Urban Unit has improved these studies significantly.

The information has been updated in respect of population, manpower, production of agriculture crops, fruits, vegetables, livestock, forest resources, ores/minerals, infrastructural facilities such as technical/vocational training facilities, communication net-work, sub-soil water quality/effluent disposal

facilities, power/gas supply, tele-communication facilities, industrial estates, dry ports, industrial financing facilities, loaning scheme of PSIC, industrial policy, investment policy, fiscal incentives, Special Economic Zone Act 2012 and Strategic Trade Policy Framework (2012-15) etc. New policy measures regarding declaration of negative and specified positive areas have also been incorporated.

The study also includes information regarding existing industrial pattern, industry wise installed capacities and details regarding existing major industrial units in each district.

Effort has been made to identify various industries considering the availability of raw materials, skilled labour, linkage between industrial units and local/national/international demand. The suggested industries are, however, merely of indicative nature and it is advisable that prospective investors should conduct detailed feasibility report before making final decision for investment.

It is worthwhile to mention that industrial sector in Punjab has grown gradually from 6,223 industrial units in 1975 to 17,857 industrial undertakings in 2010. Sectoral growth has also been registered, resulting in substantial value addition. Value addition chain can be maximized by processing the agricultural industrial waste like rice husk, cotton stock, maize and corn cob. Herbal products is another untapped area. Live Stock, Dairy Development and poultry are fast growing sectors. Processing of food products can fetch handsome dividends. Currently information technology sector is growing by 39% annually in Pakistan. Fashion

industry is also developing rapidly. Similarly, chemical sector has lot to offer by utilizing the available mineral resources as raw material.

Issue of energy shortage can be addressed by dealing with power generation as an industry. Local as well as foreign investors have golden opportunity to set up power generation stations based on coal and other alternate fuels, under the captive power plants policy allowed in the newly promulgated SEZ Act, 2012. Punjab offers very good opportunity to the local as well as foreign investors to set up small, medium and heavy industries in variety of sectors. It has a growing market of over 90 million consumers, abundant manpower / labour force and cheap raw material with reasonably controlled law & order.

The Industries, Commerce & Investment Department has sufficient institutional frame work of attached and autonomous bodies to look after the industrial issues. Directorate of Industries, Small Industries Corporation (PSIC), Board of Investment (PBIT), Punjab Industrial Estates Development and Management Company (PIEDMC), Faisalabad Industrial Estates Development and Management Company (FIEDMC) have blend of professionals from the public as well as private sector. These legal entities are working in close coordination with the Chambers of Commerce and Industries systematically to promote industrialization and trade.

Development schemes regarding establishment of Industrial Resource Centre at the Directorate of Industries, setting up Sports & Material Testing Lab at EPZ, Sambrial and Industrial Safety Institute are under consideration with the Planning and Development

Department. Completion of these schemes will definitely help in promotion of industrialization process with enhanced industrial safety.

I must record my appreciation to Mr. Muhammad Akram Awan, Senior Economist, who effectively planned, coordinated and provided the guidance to his team members for completion of this study. Credit also goes to Mr. Muhammad Jamil Chishty, Staff Economist for his dedicated support rendered in the completion process of this study and Mr. Waseem Haider, Stenographer, for his tireless typing and composition work on computer.

I am grateful to all the District Officers, Enterprise & Investment Promotion who provided the relevant information of their respective districts for incorporating in pre-investment studies. I am also thankful to various Provincial Departments for supplying the required data to the Directorate of Industries. My special thanks are due to Dr. Nasir Javed, Project Director, Urban Unit for the provision of digital maps and the Punjab Printing Press.

Any suggestion for the improvement of the study will be welcomed.

Dec. 31, 2012

**(Muhammad Siddique Sheikh)**  
Director Industries, Punjab

# Contents

---

Section	Page
<b>District at a Glance</b>	<b>1</b>
<b>1. Geographical Conditions</b>	<b>3</b>
1.1 Brief Description of the District	3
1.2 Climate and General Soil Conditions	3
<b>2. Man-Power</b>	<b>5</b>
2.1 Total Population of the District	5
2.2 Man-Power Availability	5
2.3 Traditional Crafts	9
2.4 Geographical Indicators	9
<b>3. Natural Resources</b>	<b>11</b>
3.1 Agriculture	11
a) Main Crops	11
b) Main Fruits	12
c) Main Vegetables	12
3.2 Forests	13
a) Location of Forests and Area under Afforestation	13
b) Production of Timber and Fire-wood	14
3.3 Livestock Population	14
a) Animal Population	14
b) Poultry Population	15
c) Availability of Hides/Skins & Slaughter House Wastes	15
d) Production of Wool	15
3.4 Ores and Minerals	16

<b>4. Infrastructural Facilities</b>	<b>17</b>
4.1 Communication Network	17
a) Road Links	17
b) Rail Links	17
4.2 General Quality and Availability of Sub Soil Water	17
4.3 Effluent Disposal Facilities	18
4.4 Power Supply	18
4.5 Natural Gas Availability	18
4.6 Telecommunication Facilities	18
4.7 Social Infrastructural Facilities	18
4.8 Industrial Estates	19
4.9 Dry Port	20
4.10 Industrial Policy	20
4.11 Declaration of Negative Areas	24
4.12 Declaration of Positive Areas	25
4.13 Incentives for Investors to set a unit in EPZs	26
4.14 Pakistan’s Investment Policy – Key Features	28
4.15 Industrial Financing Facilities	31
4.16 Salient Features of Loaning Scheme of PSIC	34
4.17 Salient Features of the SEZ Bill 2012	35
4.18 Strategic Trade Policy Framework (2012-2015)	37
<b>5. Existing Pattern of Industrial Development</b>	<b>43</b>
5.1 Description of Existing Industry	43
<b>6. Future Industrial Potential</b>	<b>45</b>
6.1 Agriculture	45
6.2 Livestock	46
6.3 Forest	47
6.4 Industry	48
6.5 Demand Based Industries	48
6.6 List of Identified Projects	49

---

<b>Annex</b>	<b>Page</b>
<b>Directory of Industrial Establishments</b>	<b>51</b>
<b>List of Contact Nos.</b>	<b>85</b>
<b>Bibliography</b>	<b>87</b>

**DISTRICT AT A GLANCE**

1	Population (000 Numbers)	:	2,272
2	Area (Square Kilometres)	:	3,201
3	Population Density (per sq. km.)	:	710
4	Tehsils / Towns	:	Sahiwal and Chichawatni.
5	Main Crops	:	Sugarcane, Wheat, Cotton, Maize and Rice.
6	Main Fruits	:	Citrus, Guava Mango and Pomegranate
7	Main Vegetables	:	Potato, Onion, Cauliflower, Tomato and Turnip.
8	Forest Resources (Area in Acres)	:	11521.7
9	Mineral Resources	:	Nil
10	Total Metalled Roads (KM)	:	1808.36
11	No. of Grid Stations	:	06
12	No. of Telephone Exchanges	:	25
13	Number of Industrial Units (Large Medium and Some Small Selected Sectors)	:	335
14	Type of Industrial Units	:	Agricultural Implements, Aluminum Products, Auto Parts, Biscuit, Chip/Straw Board, Cold Storage,

Confectionery, Cotton Ginning & Pressing, Dairy Products, Drugs & Pharmaceutical, Flour Mills, Foundry Products, Leather Garments, Rice Mills, Tannery, Textile Spinning, Textile Weaving, Tobacco, Vegetable Ghee / Cooking Oil and Woollen Textile Spinning /Weaving

## **CHAPTER - I**

### **GEOGRAPHICAL CONDITIONS**

#### **1.1 BRIEF DESCRIPTION OF THE DISTRICT**

District Sahiwal is bounded by district Khanewal on the West, by district Okara on the East, by district Vehari on the South-West, by district Pakpattan on the South-East and district Bahawalnagar on the south.

District Sahiwal is spread over an area of 3201 Square Kilometres and comprises two tehsils namely:

- i) Sahiwal
- ii) Chichawatni

#### **1.2 CLIMATE AND GENERAL SOIL CONDITIONS**

The climate of Sahiwal district is extreme hot to the extent of 47°C in summer and cold in Winter up to 2°C. Topographically, the district is homogeneous semiarid plain with the exception of a few belts of ravines and uneven land formed by fully erosion along the lower Bari Doab and its distributaries. The river Ravi flows on its North-West and the river Satluj on its South. The soil of the district is very fertile. The average rainfall is about 177 mm.



## CHAPTER - II

### MAN POWER

#### 2.1 TOTAL POPULATION OF THE DISTRICT

According to Punjab Development Statistics 2011, total population of Sahiwal district is 2272 thousand persons out of which 1,181 thousand are males and 1,091 thousand are females. Density of population in the district is 710 persons per square kilometre.

Tehsil wise distribution of Urban and Rural population is given in Table-1

**TABLE-1**

#### Town-Wise Distribution of Urban & Rural Population

Town	Population (Thousand Nos.)		
	Urban	Rural	Total
Sahiwal	282	1028	1310
Chichawatni	90	872	962
<b>Total</b>	<b>372</b>	<b>1900</b>	<b>2272</b>

Source: Punjab Development Statistics, 2011

#### 2.2 MAN POWER AVAILABILITY

As regards availability of skilled labour, there are 09 technical / commercial / vocational institutions

(06 for men and 03 for women) imparting training in various trades e.g. mechanical, electrical, auto-engineering, welding, Food Technology and commerce. Vocational institutions for women impart training in hand/machine embroidery, stitching, knitting, computer etc. In all about 6264 trained technicians/artisans/workers are turning out every year. The details are given in Table-2.

**TABLE - 2**

**Commercial and Technical Institutions**

Sr #	Name & Description of Commercial / Technical Training Institutions	Types of Training Courses Offered	Duration of Course	Average No of Students Enrolled / Session
<b>For Men</b>				
1	Govt. College of Commerce, 1-Liaqat Shaheed Road, Sahiwal 2-New Campus Imamia Colony	D.Com, B.Com, M.Com	24 Months	1182
2	Govt. College of Commerce, Multan Road, Chichawatni	Certificate in Computer Application, D.Com B.Com (Degree)	6 to 24 Months	429

3	Govt. College of Technology, P.A. F. Road, Sahiwal	DAE (Civil, Mechanical, Auto & Farm, Electrical, Food Tech.), B.Tech (Mech), Microsoft IT Academy, Civil Surveyor	3 to 6 Months	3411
4	Govt. Technical Training Institute, Harapa Road, Sahiwal	Auto & Farm Machinery, Draftsman Mech., Electrician, Fitter General, Machinist, Radio & TV, Welder	18 to 24 Months	317
5	Govt. Technical Training Institute, Ahmad Murad Road, Sahiwal	Auto Mechanic, Draftsman (Civil), Electrician, Machinist, Radio & TV. Heating Ventilation & Air Conditioning (HVACR)	12 to 24 Months	404

6	Govt. Technical Training Institute, Okhan Wala Chichawatni	Ref. & AC, Auto Mechanic, Electrician, Radio & TV, Heating Vitalization & AC Certificate in computer Application	6 to 24 Months	143
<b>For Women</b>				
7	Govt. Institute of Commerce, Near Main Gate Faridia Park Tariq Bin Ziad Colony, Sahiwal	D.Com	24 Months	171
8	Govt. Vocational Training Institute, Thal Road Near Urban Area Sahiwal	Tailoring, Beautician, Certificate in Computer Application, Vocational Diploma	6 to 24 Months	131
9	Govt. Vocational Training Institute, Railway Road New NBP, Chichawatni	Tailoring, Vocational Certificate, Vocational Diploma	6 to 24 Months	76

Source: TEVTA

## **2.3 TRADITIONAL CRAFTS**

The traditional crafts of district Sahiwal include baskets and mats. The baskets are made from sticks of Mulberry trees, which are found in abundance in the forest located at Chichawatni. The baskets are used for packing of fruit and vegetables. The mats are made from naturally grown grass. These crafts are mainly concentrated in Chichawatni and its suburbs. Approximately, 400 artisans are engaged in these crafts. Apart from baskets and mats, there are a number of handlooms installed in Sahiwal for the manufacturing of school mats from jute and about 500 persons are engaged in this trade.

## **2.4 GEOGRAPHICAL INDICATIONS**

The Project Director (Geographical Indications), Industries, Commerce & Investment Department, Government of the Punjab has identified that the “Neeli Ravi Bhans (buffalo)” is important Geographical Indication in the district.



## CHAPTER - III

### NATURAL RESOURCES

#### 3.1 AGRICULTURE

##### a) Main Crops

Sugarcane, Wheat, Cotton, Maize and Rice (cleaned) are the main crops grown in the district. Production of these crops during the period 2008-09 to 2010-11 is given in Table - 3.

**TABLE-3**

**Production of Main Crops  
(2008-09 to 2010-11)**

Crop	Production (Th. M.Tons)		
	2008-09	2009-10	2010-11
Sugarcane	432.82	320.99	352.72
Wheat	460.13	455.85	453.14
Cotton (000 Bales)	309.86	233.57	309.51
Maize	307.46	356.6	438.8
Rice (cleaned)	52.34	53.61	55.13

Source: Directorate of Agriculture, Crop Reporting Service, Punjab

Besides, Guar Seed, Bajra, Moong, Mash, Masoor, Jawar and Oil Seed such as Rape / Mustard and Sunflower are also grown in minor quantities in the district.

## b) Main Fruits

Citrus, Guava, Mango and Pomegranate are main fruits grown in the district. Production of these fruits during the period 2008-09 to 2010-11 is given in Table - 4

**TABLE-4**

**Production of Main Fruits  
(2008-09 to 2010-11)**

Fruit	Production (M.Tons)		
	2008-09	2009-10	2010-11
Citrus	81670	94616	87055
Guava	38015	45107	43760
Mango	19913	18102	16292
Pomegranate	-	2939	1829

Source: Directorate of Agriculture, Crop Reporting Service, Punjab

Besides, Litchi, Phalsa and Banana are also grown in minor quantity in the district.

## c) Main Vegetables

Potato, Onion, Cauliflower, Tomato and Turnip are main vegetables grown in the district. Production of these vegetables during the period 2008-09 to 2010-11 is given in Table - 5

**TABLE-5**

**Production of Main Vegetables  
(2008-09 to 2010-11)**

Vegetable	Production (M.Tons)		
	2008-09	2009-10	2010-11
Potato	373921	441387	487534
Onion	5132	4289	9248
Cauliflower	5411	5416	4661
Tomato	3270	3133	3292
Turnip	2239	2057	2183

Source: Directorate of Agriculture, Crop Reporting Service, Punjab

Besides, Peas, Carrot, Garlic, Chillies and Ladyfinger are also grown in the district in minor quantities.

### 3.2 FORESTS

#### a) Location of Forests and Area under Afforestation

An area of 11521.7 Acre is under forests, which is about 1.46% of the total area of the district. There is also linear plantation of 1032.98 Km alongside the roads/rails/canals in the district. Trees grown in the area include Kikar, Shisham, Simbal and Mulberry, etc.

### b) Production of Timber and Firewood

The production of Timber and Fire-Wood in the district during the period 2008-09 to 2010-11 is given in Table 6.

**TABLE-6**

**Production of Timber & Firewood  
(2008-09 to 2010-11)**

Year	Production (Cubic Meter)	
	Timber	Firewood
2008-09	1603.59	1194.8
2009-10	3674.82	1381.93
2010-11	13900.44	5629.01

Source: Forestry, Wildlife and Fisheries Department

### 3.3 LIVESTOCK POPULATION

#### a) Animal Population

The animal population of the district is given in Table - 7.

**TABLE - 7  
ANIMAL POPULATION**

Animals	Population (Th Heads)
Cattle	288
Buffaloes	779
Sheep	54
Goats	549

Source: Livestock & Dairy Development Department.

**b) Poultry Population**

As per Punjab Development Statistics 2011 there are 279 broiler and 78 layer poultry farms in the district Sahiwal having rearing capacity of 12625 and 591 thousand birds respectively.

**c) Availability of Hides / Skins and Slaughter House Wastes**

As per Punjab Development Statistics 2011, 93,900 animals were slaughtered in recognized / un-recognized slaughter houses in the district during the year 2009-10 which is a reasonable estimate of the availability of hides and skins in the district.

The availability of slaughter house by - products is estimated as under:-

Blood	34.37 M.Tons
Bones	162.73 M.Tons
Tallow	31.27 M.Tons

**d) Production of Wool**

The sheep population of 54 thousand heads in the district is expected to yield about 54 M. Tons of coarse wool annually.

### **3.4 ORES AND MINERALS**

There is no major mineral in the district.

## **CHAPTER - IV**

### **INFRASTRUCTURAL FACILITIES**

#### **4.1 COMMUNICATION NETWORK**

##### **a) Road Links**

The district has a total metalled road-length of 1808.36 Kilometres. The district is linked with Multan, Okara, Pakpattan, Khanewal, Vehari and Bahawalnagar Districts through metalled roads.

##### **b) Rail Links**

The main Peshawar - Karachi railway line passes through Sahiwal District. Sahiwal, Qadirabad, Harappa, Chichavatni, Kassowal and Iqbal Nagar are the major Rail heads in the district. The district is linked with Multan and Okara through railway network.

#### **4.2 GENERAL QUALITY AND AVAILABILITY OF SUB-SOIL WATER**

Under ground water resources are adequate throughout the district. The quality of sub soil water is good and suitable for industrial purposes.

### **4.3 EFFLUENT DISPOSAL FACILITIES**

There is no significant nullah in the district. However Sukh Bias passes through the district lengthwise from East towards West. This river can be utilized for effluent disposal after pre-treatment to remove harmful ingredients and with prior written permission from Irrigation and Power Department, Government of the Punjab.

### **4.4 POWER SUPPLY**

There are 6 grid stations in the district, ranging in capacity from 66 KV to 132 KV.

### **4.5 NATURAL GAS AVAILABILITY**

At present natural gas is available in the district.

### **4.6 TELE-COMMUNICATION FACILITIES**

There are 25 telephone exchanges operating in the district, ranging in capacities from 50 lines to 10,762 lines. Cellular phone services are available in the district.

### **4.7 SOCIAL INFRA-STRUCTURAL FACILITIES**

Social infra-structural facilities available in the district are given in Table - 8.

TABLE - 8

**SOCIAL INFRA-STRUCTURAL FACILITIES**

Tehsil	Primary / Middle / high / higher secondary School	College	Hospital	Police station	Railway stations	Post office	Banks
Sahiwal	636	4	2	10	7	17	61
Chichawatni	598	2	1	5	6	9	21
Total	1234	6	3	15	13	26	82

Source: Punjab Development Statistics 2011 / Respective District Offices.

**4.8 INDUSTRIAL ESTATE**

An industrial estate was established in the district in 1985. The estate comprises 188 plots of different sizes as detailed in Table-9.

TABLE - 9

**SIZES AND AVAILABILITY OF PLOTS IN THE INDUSTRIAL ESTATE**

Name of Industrial Estate	Size of Plots (Acres)	Total No. of Plots	Allotted Plots	Vacant Plots
Industrial Estate, Sahiwal	4 kanals	27	27	Nil
	2 kanals	58	58	Nil
	1 kanal	69	69	Nil
	7 marlas	34	34	Nil

Source: Punjab Industrial Estates Development and Management Company

## 4.9 DRY PORT

There is no dry port in the district.

## 4.10 INDUSTRIAL POLICY

- Foreign investors are permitted to hold 100% of the equity of industrial projects without any permission of the Government.
- No prior Government sanction is required for establishment of an industry outside Ex-Municipal Territorial Limits of Town Committees / Municipal Corporation irrespective of its cost and size except the following covered under schedule 'C':-
  - a. Arms & Ammunition.
  - b. Security Printing Currency & Mint.
  - c. High Explosives.
  - d. Radio Active Substances.
  - e. Alcoholic Beverages or Liquors.
- 1. No industrial unit mentioned in Schedule-A of the notification No. AEA-III-4-3-9/91, dated 30.09.2002 or industrial unit exceeding a total cost of Rs. 100.00 million shall be set up within 10 miles (16 Kms) of international border:

**List of Manufacturing Industries**

- a) Basic Metal Industry.
  - b) Petro-Chemical Industries (Excluding Products Industries).
  - c) Large size Machine Tool Factories (Limit of Investment to be determined).
  - d) Heavy Foundry Works.
  - e) Heavy Electric Complexes.
  - f) Heavy Mechanical Complexes.
  - g) Electronics Industries.
  - h) Major Vehicle Assembly Plants.
  - i) Ordnance Factories.
  - j) Explosives, Nitric acid and Sulphuric acid plants.
  - k) Vehicular Tires and Tubes Industries.
  - l) Locomotives and Railway Carriage manufacturing plants.
  - m) Government Mint.
  - n) Security Printing Press involved in whole time printing of sensitive documents / currency notes.
  - o) Manufacture of optical glass and optics.
  - p) Nickle cadmium battery industries.
  - q) Nuclear / Separation Plants.
  - r) Large Power Generating Stations.
  - s) Large oil Storage units.
  - t) Oil refineries.
2. No industrial unit shall be set up in areas affected by flood flowing transversely in the strip of one mile of either side across the Grand Trunk Road from Shahdara Town to

Muridke Town, without prior permission of the Provincial Government.

3. According to the notification No. AEA-III-3-5/2003 (Vol-III), dated 06.12.2006, “no new sugar mill shall be setup and no enlargement in capacity of the existing sugar mills is allowed in the Province”.
4. Each district Government may declare “negative area” for industry. Such “negative area” be determined by a District Committee after consultation with all stake-holders in light of general policy guidelines issued by the Industries, Commerce & Investment Department and exemptions allowed under Schedule ‘B’ of this Notification as under:

#### **List of Service Industries**

- a) Furniture (excluding Band Saw) and also excluding storing Timber / Wood.
- b) Tailoring/ Readymade garments.
- c) Laundry / Dry Cleaning.
- d) Bakery (excluding confectionery).
- e) Syrups ( excluding squashes)
- f) Cosmetics.
- g) Service workshop.
- h) Cereal Products like vermicilles.
- i) Candles making.
- j) Printing and Packaging.
- k) Hand loom carpet weaving.
- l) Hotels.

- m) Bidi manufacturing.
- n) Handmade shoes / shoe repairing workshop.
- o) Spooling and thread balls.
- p) Small Hosiery units employing not more than 10 workers.
- q) Atta Chakkies.
- r) Installation of Chaff cutters.
- s) Cotton Grading.
- t) Other small industrial undertakings which do not fall under the Sixth schedule of the Punjab Local Government Ordinance, 2001.

“Other small industrial undertakings” would mean an industrial undertaking in which the total fixed assets (including the cost of land) do not exceed Rs.1.0 million (Rupees one million).

5. No industrial unit mentioned in Schedule ‘C’ of this Notification shall be set up anywhere in the Punjab without prior approval of the Government.
6. The Government reserves the right to refuse establishment / enhancement of any industrial undertaking which is in contravention of the public interest, ecology or any other law / rules for the time being in force.
7. The Government may relax any of the provisions of this notification in case of a

particular unit or industry or class of units or industries.

8. NOC from Environment Protection Department, Govt. of the Punjab is required for setting up new Industries.
  - Tourism has been given the status of industry in accordance with Ministry of Industries & Production Circular No. 1-129/99-INV-IV dated 2<sup>nd</sup> August 1999.
  - The Housing and Construction Sector has also been declared as industry (Finance Division Notification No. 10(10)/IF-11/98, dated 07.04.1999 and 04.06.1999.
  - In accordance with Government notification No. 3(2)/97-INV-IV dated 05.05.1997, Computer Software and Information Technology (IT) have been declared as Industry.

#### **4.11 DECLARATION OF NEGATIVE AREAS**

In pursuance of the Clause 4 of the Location Policy notified on 30-09-2002, by the Industries Commerce & Investment Department, Government of the Punjab, the District Govt. Sahiwal has declared the following negative areas:-

- a. All Ex-Municipal/Town Committee Limit Areas.

- b. Inside any built up area for residential purpose.
- c. A distance of 50 M on either side from the center of National Highways/G.T. Road.
- d. Flood effected areas transversely one mile either side of river.

#### **4.12 DECLARATION OF SPECIFIED POSITIVE AREAS**

Vide the Finance Act, 2008, the Government of Pakistan has enacted a new section “23A” in the Income Tax Ordinance 2001. The Section “23A” is reproduced below:-

“First year allowance.- (1) Plant, Machinery and equipment installed by any industrial undertaking setup in specified rural and under developed areas, and owned and managed by a company shall be allowed first year allowance in lieu of initial allowance under Section 23 at the rate specified in Part II of the third schedule against the cost of the “eligible depreciable assets” put to use after July 1<sup>st</sup>, 2008.

(2) The provision of Section 23 except sub-sections (1) and (2), thereof, shall mutatis mutandis apply.

The Federal Government may notify “Specified areas” for the purpose of sub-section(1)”

In pursuance of the above mentioned notification District Government Sahiwal has identified and approved the following specified positive areas for setting up industrial undertakings:-

- a) Katchi Pakki Harappa Road.
- b) Yousaf wala to Noor Shah Road.
- c) Bonga Hayat Road.
- d) Chichawatni to Okanawala Road.
- e) Iqbal Nagar to 90 More.

#### **4.13 INCENTIVES FOR INVESTORS TO SETUP A UNIT IN EPZs**

- a) According to EPZs Authorities, following incentives are available in the Export Processing Zones
  - 1. 100% ownership rights.
  - 2. 100% repatriation of capital & profits.
  - 3. No minimum or maximum limit for investment.
  - 4. Duty free imports of machinery, equipment & material.
  - 5. No sales tax on input goods including electricity & gas bills.

6. Obsolete/old machinery can be sold in domestic market of Pakistan after payment of applicable duties & taxes.
7. Freedom from national import restrictions.
8. Foreign exchange control regulation of Pakistan not applicable.
9. Defective goods/waste can be sold in domestic market after payment of applicable duties, maximum upto 3% of total value of export.
10. Duty free vehicle allowed under certain conditions. After 5 years of use, vehicles can be disposed off in domestic market on payment of duty on depreciated value.
11. Domestic market of Pakistan available on same conditions as for imports from other countries.
12. Units operating in EPZs can undertake sub-contracting for units of tariff area subject to payment of duty and taxes on value addition only.
13. Only EPZA is authorized to collect Presumptive tax at the time of export of goods which would be final tax liability.
14. EPZ units allowed to supply goods to Custom manufacturing bonds.
15. Production oriented labour laws to be solely regulated by the Authority.
16. EPZ manufacturer will be treated at par with bonded manufacturers in tariff area

for any future incentives to be announced for exporters.

17. Relief from double taxation subject to bilateral agreement.

b) Facilities to Investors for setting up a unit in EPZs of Pakistan.

1. One window service and simplified procedure.
2. All infrastructural facilities like water, electricity, gas, telex, fax and telecommunication system are made available by EPZA.
3. Skilled & un-skilled labour available in abundance.
4. Sub-contracting without limit on variety and quantity is allowed outside the zone as well as within the zone.
5. The garment manufacturing units located in Export Processing Zones are eligible to participate in auction of quotas.
6. GSP concessions given by various countries to imports from Pakistan are available to the manufacturers in the zone.
7. Peaceful, secure and environmentally protected / pollution free work area.
8. Inter-unit transfer of finished goods among exporting units allowed.

#### **4.14 PAKISTAN'S INVESTMENT POLICY - KEY FEATURES**

##### ***General***

- The investment policy is liberal and business friendly as it has been designed in consultation with businessmen, investors and representative forums as well as the Multinational Companies (MNCs).
- It provides equal investment opportunities for both domestic and foreign investors.
- All economic sectors open for FDI (Foreign Direct Investment).
- 100% foreign equity allowed.
- No government sanction required.
- Foreign investment on repatriable basis is allowed in all economic sector including manufacturing, agriculture, services, infrastructure and social sectors.
- Foreign investment in Agriculture projects allowed on joint-venture basis by associating minimum local equity of 40%.
- Remittance of Royalty, Technical & Franchise Fee, Capital, Profits, Dividends allowed.
- Minimum foreign equity for non-manufacturing including service sectors has been reduced from \$ 0.3 to \$ 0.15 million. In Agriculture, infrastructure and social sectors, it is \$ 0.3 million.

### ***Tariff and Tax Incentives***

- To keep Pakistan competitive in international tariff 5% customs duty has been allowed on import of plant and machinery which is not manufactured locally.
- Sales Tax 0% across the board.

- 0% duty on import of raw material for export industry.
- 0% duty on import of agriculture machinery.
- Tax relief in shape of Initial Depreciation Allowance (IDA) has been provided as 50% of machinery cost across the board.
- Tax relief has also been provided for expansion and Balancing, Modernization & Replacement (BMR) in existing industries.

### ***Policy Package of Pakistan***

Policy Parameters	Mfg. Sector	Non-Manufacturing Sectors		
		Agriculture	Infrastructure & Social	Services including IT & Telecom Services
Govt. Permission	Not required except for specified industries*	Not required except specific licences from concerned agencies.		
Remittance of capital, profits, dividends, etc.	Allowed	Allowed		
Upper Limit of foreign equity allowed	100%	100%	100%	100%
Minimum Investment Amount (M \$)	No	0.3	0.3	0.15
Customs duty on import of PME**	5%	0%	5%	0-5%
Tax relief (IDA***, % of PME cost)	50%	50%		

Royalty & Technical Fee	No restriction for payment of royalty & technical fee.	Initial lump-sum up to \$100,000 Max Rate 5% of net sales - Initial period 5 years
-------------------------	--	---

\* Specified Industries:

- i) Arms and ammunitions
- ii) High Explosives
- iii) Radioactive substances
- iv) Security Printing
- v) Currency and mint

\*\* PME = Plant, Machinery and Equipment

\*\*\* IDA = Initial Depreciation Allowance

#### 4.15 INDUSTRIAL FINANCING FACILITIES

Following Financial Institutions in the country are providing various types of fixed investment industrial financing in the foreign and local currency to the industrial sector for establishment of new industrial units as well as for Expansion, Balancing, Modernization and Replacement (BMR) of existing industrial units within the frame-work of industrial/financial policies of the Government of Pakistan.

- 1 AlBaraka Bank (Pakistan) Limited.
- 2 Allied Bank Limited.
- 3 Askari Bank Limited.

- 4 Bank Alfalah Limited.
- 5 Bank Al-Habib Limited.
- 6 Bank Islami Pakistan Limited.
- 7 Barclays Bank PLC.
- 8 Burj Bank Limited.
- 9 Citi Bank N.A.
- 10 Deutsche Bank A.G.
- 11 Dubai Islamic Bank Pakistan Limited.
- 12 Faysal Bank Limited.
- 13 First Women Bank Limited.
- 14 Habib Bank Limited.
- 15 Habib Metropolitan Bank Limited.
- 16 HSBC Bank Middle East Limited.
- 17 Industrial and Commercial Bank of China
- 18 Industrial Development Bank of Pakistan.
- 19 JS Bank Limited.
- 20 KASB Bank Limited.
- 21 MCB Bank Limited.
- 22 Meezan Bank Limited.
- 23 National Bank of Pakistan.
- 24 NIB Bank Limited.
- 25 Oman International Bank S.A.O.G.
- 26 S.M.E. Bank Limited.
- 27 Samba Bank Limited
- 28 Silk Bank Limited.
- 29 Sindh Bank Limited.

- 30 Soneri Bank Limited.
- 31 Standard Chartered Bank (Pakistan) Limited.
- 32 Summit Bank Limited
- 33 The Bank of Khyber
- 34 The Bank of Punjab
- 35 The Bank of Tokyo-Mitsubishi Limited.
- 36 The Punjab Provincial Cooperative Bank Limited.
- 37 United Bank Limited.
- 38 Zarai Taraqati Bank Limited.

---

Source: State Bank of Pakistan

***List of Development Financial Institutions (DFIs)***

- 1 Bankers Equity Limited.
- 2 House Building Finance Company Limited.
- 3 Pak Brunei Investment Company Limited
- 4 Pak-China Investment Company Limited.
- 5 Pak Oman Investment Company Limited.
- 6 PAIR Investment Company Limited.
- 7 Pakistan Kuwait Investment Company Limited.
- 8 Pak-Libya Holding Company Limited.
- 9 Saudi Pak Industrial & Agricultural Investment Company Limited.

---

Source: State Bank of Pakistan

Besides the financial institutions mentioned above a number of Leasing Companies, Modaraba Companies, Investment Banks are also providing financing facilities to the industrial sector. Punjab Small Industries Corporation also extends financial assistance to the small/cottage industrial units.

#### **4.16 SALIENT FEATURES OF LOANING SCHEME OF PSIC**

Punjab Small Industries Corporation (PSIC) is a body corporate enacted in 1973. One of core functions of PSIC is financial assistance programme for prospective entrepreneurs, skilled youth, artisans and craftsmen all over the Punjab. The priority sectors are as under:

- Service Industries.
- Agro / Agro Support Industries.
- Food Processing Industries.
- Export Oriented Industries.
- Import Substitution Industries.
- Information Technology (IT) Project.
- Handicraft Industry.
- Women Enterprises.

PSIC started credit assistance programme during 1984 and completed 13 schemes up till now. An amount of Rs. 4079 Million has been disbursed to 19,580 entrepreneurs in 36 Districts of Punjab with

the recovery rate of 88% that indicates proper utilization of loans.

The maximum loan limit is Rs.3 Million with debit equity ratio of 60:40. The credit assistance facility available for new projects, BMR and Working Capital. The markup rate varies from 0% to 12%. The repayment period of loan is from 3 years to 6 years with grace period of 3 months to 6 months.

Recently, Government of Punjab has provided an amount of Rs. 2000 Million for disbursement through Service Provider Organization i.e. M/s Akhuwat to un-employed and skilled persons of PVTC, TEVTA, SANATZAR's of Social Welfare Department or other unemployed youth having good business plan.

Up till now, M/s Akhuwat has disbursed an amount of Rs. 1650.00 Million to 94,960 poor household in 33 vocations with average loan size of Rs. 17,382 in Punjab through its 142 offices in 30 districts of the Punjab.

To promote the traditional handicrafts in Punjab, PSIC has also launched dedicated credit assistance schemes for the craftsmen at subsidized markup rates. These craftsmen have also been provided marketing facilities through Pakistan Handicrafts Shops.

#### **4.17 SALIENT FEATURES OF THE SEZ BILL 2012**

The Law of SEZ has been made to meet the global challenges of competitiveness to attract FDI. The Law/bill will allow to create industrial clusters with liberal incentives, infrastructure, investor facilitation services to enhance productivity and reduce cost of doing business for economic development and poverty reduction. The Law further envisages to reduce processes through SEZ in Pakistan. The establishment of SEZs will attract both domestic as well as international investors. The SEZ would play a pivotal role in the economic development of Pakistan as has been witnessed in case of China, Malaysia, Thailand and other states.

It extends to the whole of Pakistan and overrides other laws (anything contrary);

- All SEZ whether Public, Public-Private or Private-Private to be governed under this Act;
- The Board of Approval (BOA) headed by the Prime Minister of Pakistan with the Minister for Finance as the Vice Chairman shall meet as frequently as required but not less than twice a year and decisions shall be taken by a majority of the total membership present and voting;
- SEZs will have exemption from customs duties & taxes for all Capital Goods imported into Pakistan for the development , operations and maintenance of a SEZ;

- Exemption from all taxes on income accruable in relation to the development and operations of the SEZ for a period of ten years, starting from the date of signing of the Development Agreement.
- Zone Enterprises have exemption from custom duties etc. on imports of Capital Goods;
- Exemption from taxes on income for a period of 10 years starting from the date the Development certifies that the Zone Enterprise has commenced commercial operations in the relevant SEZ;

There is no limit to the economic potential of Pakistan. The challenge is to create the enabling environment in which this can be realized. Special Economic zones bill is a step towards the economic stability in the country.

#### **4.18 STRATEGIC TRADE POLICY FRAME WORK (2012-2015)**

The government unveiled on 29 January, 2013 a medium term (2012-2015) Strategic Trade Policy Framework, setting a cumulative export target of \$95 billion for three years. The framework, the second announced by the federal government will be implemented with a funding of Rs. 26.14 billion. In the first year, Rs.5 billion will be spent on providing subsidies and support to identified sectors.

The focus of the policy is on promoting regional trade and regulatory efficiency, promoting agro-processed exports, increasing exports from less developed regions, revamping export promotion agencies, increasing green exports, enhancing role of women in exports and pursuing product and market development and diversification.

The salient features of the policy include institutional interventions, export development initiatives and regulatory amendments. The policy, offers cash assistance to 14 sectors along with 19 regulatory frameworks, including ban on products as a protective measure against environmental and health hazards. The new framework is designed to provide assistance only to the non-textile sectors.

***Institutional Measures:*** The government will setup institutions like an Export-Import (Exim) Bank, Pakistan Land Port Authority; Leather Export Promotion Council and a Services Trade Development Council.

***Export Development:*** Major initiatives in the Policy included allowing mark-up rate support of two per cent on prevailing LTFF for future import and purchase of machinery. An allocation of Rs.500 million has been proposed for schemes to be implemented this year. The total amount to be spent in three years is projected at Rs.3 billion. A mark-up support of 1.5% will be provided on

export finance scheme (EFS) to selected sectors at a cost of Rs. 1.25 billion, including Rs. 200 million in 2012-2013.

The sectors for EFS support are fish and fish preparations, fruit and vegetables, spices, meat and meat preparations, carpets and rugs, sports goods, footwear, leather products, surgical goods, cutlery, onyx products, pharmaceuticals, electric fans, transport equipment, electrical machinery, specialized machinery, furniture, handicrafts and computer-related services.

An amount of Rs.14 billion will be given as adhoc relief at three per cent of FoB to offset the impact of higher cost of utilities for exporters in selected sectors. The measure will cost Rs.3bn this year. An amount of Rs.2 billion-Rs125 million will be allocated for marketing development assistance for regional countries.

A Rs. 25 million allocation has been proposed for export promotion campaigns for agro-processed products; Rs. 400 million for encouraging opening of retail outlets; and Rs.400m for subsidizing 50% cost of plant and machinery for establishing processing plants for meat, fruits, vegetables, dates and olives in Azad Jammu and Kashmir, Baluchistan, Gilgit - Baltistan and Khyber Pakhtunkhwa.

An amount of Rs.30 million will be allocated for upgrading rice inspection laboratories, Rs. 20 million for subsidy at 100% of the prevailing mark-up rate for establishing mining and processing units in Khyber Pakhtunkhwa and Baluchistan.

Another Rs.20 million has been allocated for strengthening women's chamber of commerce and industry, Rs.32 million for setting up a resource management cell at the ministry of commerce, Rs.28 million for establishing leather export promotion council and Rs.70 million for services export development council.

### ***Regulatory Measures***

Unrestricted import of used motorized wheelchairs and five-year-old used or second-hand ambulances has been allowed. Two per cent of export proceeds will be allowed to manufacturers-cum-exporters for duty-free import of accessories for value-addition for leather garments and made-ups. Import of non-hazardous plastic scrap has been allowed for industrial consumers for use as raw material. A ban has been imposed on import of plastic waste, hospital waste, used sewerage pipes and chemical containers.

Import of non-sterilized surgical needles and syringes will be restricted to industrial units, condition of Euro-II may be made applicable on import of all types of specialized vehicles, such as crane-mounted lorries, dump trucks and mixtures

lorries. The import of used sprinkle lorries will be restricted to a maximum of five year old. All goods from banned list imported in commercial quality shall be allowed to re-export at importer/shipping lines cost. The imported substandard goods from the restricted list should be destroyed within a period of six months without offering any release.

Import of waste and scrape of tyres in completely shredded/ cut form will only be allowed to industrial consumers; domestic standards will equally apply to imported goods as well.

Construction engineering and electrical companies will be allowed to retain abroad the exported machinery to carry out work on export-cum-import basis with the condition that they will import the same on the conclusion of the contract against indemnity bond.

All exporters of edible products are to be registered and export of vegetable ghee and cooking oil will be allowed in packaging of up to 25kg to encourage value-addition.

### ***Steps to contain Environmental & Health Hazards***

- Ban on import of plastic waste/scrap-hospital waste, used sewerage pipes and chemical containers.

- Restricting import of non-sterilized surgical needles and syringes to industrial units.
- Only the more fuel efficient Euro-II category crane-mounted lorries, dump trucks, mixture lorries, etc, will be imported.
- Imported used tyres will only be allowed for industrial use.

### ***Institutions to be Setup***

- Export-Import Bank.
- Pakistan Land Port Authority.
- Leather Export Promotion Council.
- Service Trade Development Council.

## CHAPTER - V

### EXISTING PATTERN OF INDUSTRIAL DEVELOPMENT

#### 5.1 DESCRIPTION OF EXISTING INDUSTRIES

There are about 335 large, medium and some small industrial units in the district. Industry-wise installed capacity of major industrial units is given in Table-10.

**TABLE-10**

#### Industry-wise Installed Capacity

Sr. #	Industry	No. of units	Annual Installed Capacity
1	Agricultural Implements	12	66500 Nos.
2	Aluminum Products	9	1084 M.Tons
3	Auto Parts	9	24250 Th. Rs.
4	Biscuit	6	5520 M.Tons
5	Chip/Straw Board	3	60000 Sheets Chip Board, 5990000 Sq.Ft. Veneer board / Plywood
6	Cold Storage	78	1293000 Bags
7	Confectionery	35	6985 M.Tons
8	Cotton Ginning & Pressing	58	232 Sawgins, 57 Press, 11 Expellers
9	Dairy Products	5	530 M.Tons Cheese, 29 M.Ton Desi Ghee, 120015 Million Litres Milk
10	Drugs & Pharmaceutical	2	
11	Flour Mills	8	1280 M.Tons/ Day

12	Foundry Products	4	14800 M.Tons
13	Leather Garments	2	220000 Leather Jackets, 1000 Waist Coat
14	Rice Mills	43	74 Hullers, 9 Shellers, 53 Polishers
15	Tannery	13	10940 M.Tons
16	Textile Spinning	5	4972 Rotors, 96 Looms, 18480 Spindles
17	Textile Weaving	1	50 Looms
18	Tobacco	1	13950 Million Nos.
19	Vegetable Ghee / Cooking Oil	6	224000 M.Tons
20	Woollen Textile Spinning /Weaving	2	832 Spindles

**Source:** District Officer (E&IP), Sahiwal.

**Note:** For further details visit: [www.doi.pitb.gov.pk](http://www.doi.pitb.gov.pk)

## CHAPTER - VI

### FUTURE INDUSTRIAL POTENTIAL

Keeping in view the availability of raw material, skilled labour, linkage between the industrial units, local/national/international demand, future industrial potential of district Sahiwal is discussed hereunder:

It would, however, be kept in mind that though the above mentioned factors facilitate the success of any industrial unit, yet the entire success depends upon the investors/entrepreneurs and the capabilities of the personnel having the managerial control because any of these factors, if lacking is manageable. Therefore, it is advisable that detailed feasibility of industrial projects must be carried out before making final decision for investment.

#### 6.1 AGRICULTURE

Main crops of district Sahiwal are wheat, cotton and sugarcane. Other important crops are rice and maize. The average annual production of wheat, sugarcane, rice and maize during the period 2008-11 was about 456.37, 368.84, 53.69 and 367.62 thousand M.Tons respectively and of cotton about 284.31 thousand bales.

District Sahiwal is also rich in fruit production. The annual average production of citrus, guava and mango during the period 2008-11 were about 87.78, 42.29 and 18.10 thousand M.Tons respectively (Chapter-3, Section 3.1).

There are five textile spinning, one textile weaving, eight flour mills, 43 rice mills, a number of cotton ginning/processing factories and oil expelling units in district Sahiwal. Whereas, in view of production of various crops and fruits, there exists large potential for textile spinning, weaving and processing mills, textile made-ups i.e. hosiery, terry towel, surgical bandages, etc, starch, glucose from maize, furfural from corn (maize) cobs, rice bran oil, fruit juice, jams/jellies/pickles. A fruit concentrate plant can also be established for export market and rice husk briquettes as coal substitute for brick kilns.

## **6.2 LIVESTOCK**

As per Live Stock & Dairy Development Punjab, the population of cattle, buffaloes, sheep and goats was 288, 779, 54 and 549 thousand heads respectively. Sahiwal is famous for its milk producing cows and buffaloes. Though there is already five dairy product unit in the district, but with the proper milk collection arrangement, there exists good scope for milk products e.g. ice cream, yoghurt, cheese, butter, etc.

As regards poultry, there are 279 broilers and 38 layers poultry farms having rearing capacity of 12625 and 591 thousand birds respectively which reflect potential for a hatchery / breeding poultry farms and poultry / animal feed mill.

The annual availability of hides and skins is estimated at 93900 pieces. But there are already 13 tannery units in the districts, therefore, additional tannery is not suggested. However, there exists good scope for modern shoes factory, leather garments especially jackets and leather products.

### **6.3 FOREST**

District Sahiwal is also quite rich in forest resources. The annual production of timber during the period 2008-11 was about 6392.95 cubic meters, which reflect very good potential for modern wood processing/seasoning unit and furniture unit.

A careful study of wood resources coupled with availability of bagasse from sugar mills located in adjoining districts of Pakpattan, Okara and Toba Tek Singh and wheat-straw may reflect good potential for paper and board mill having indigenous wood-pulp facilities.

## **6.4 INDUSTRY**

Besides, 6 biscuits and 35 confectionery units, a number of engineering units are operating in the district, such as Agricultural Implements, Auto Parts, Biscuit Plant, Pumps, Saw Mills Machinery, etc. are manufactured in the district which reflect base for metal based engineering units.

As per the requirement of existing biscuits/confectionery units there exists good scope for aluminium packing foils and paper board boxes manufacturing units also having printing facilities.

As regards engineering goods industries, there seems to be a good scope for Die Casting, Machine Tools, Wrenches/Spanners, Sewing Machines, Stainless Steel Utensils, Cast Iron Pipes, Sanitary Ware Steel Products, Nuts/Bolts, Concrete Mixers, etc., manufacturing units.

## **6.5 DEMAND BASED INDUSTRIES**

In view of the local requirements and nature of existing industries, there exists good potential for automobile silencers, fibre glass water tanks, capacitors, insulators, gas appliances, geometry boxes for school children, detergent powder, plastic flush tanks, high density shopping bags, PVC Pipes, etc.

## 6.6 LIST OF IDENTIFIED PROJECTS

In view of discussion given in Sections 6.1 to 6.5, the following projects have been identified for investment in district Sahiwal:

- Agriculture waste, by products raw material based industries for maximization of value addition chain
- Animal/Poultry Feed
- Automobile Silencers
- Cast Iron Pipes
- Concrete Mixers
- Capacitors/Insulators
- Die Casting
- Detergent Powder
- Energy conservation / efficiency
- Furniture
- Fruit Juice
- Furfural from Corn Cobs
- Fibre Glass Water Tanks
- Fruit Juice Concentrate Plant
- Gas Appliances
- Geometry Boxes for School Children
- Hosiery
- High Density Shopping Bags
- Hatchery/Breeding Poultry Farms
- Ice Cream/Dairy Products
- Jams/Jellies/Squashes/Pickles
- Leather Garments
- Machine Tools

- Nuts/Bolts
- Oil Extraction from Rice Bran
- PVC Pipes
- Plastic Flush Tanks
- Paper and Paper Board
- Power generation through coal and other alternate fuels
- Power generation through bagasse
- Starch/Glucose
- Sewing Machines
- Surgical Bandages
- Stainless Steel Utensils
- Steel Sanitary ware Products
- Terry Towel
- Textile Spinning, Weaving, Processing
- Waste heat recovery system
- Wrenches/Spanners
- Wood Seasoning/Processing

**Directory of Industrial Establishments, Sahiwal**

Sr. No.	Name / Address of unit	Phone No. / Website	Industry	Estb. Year	Investment (Th.Rs.)	Emp	Product	Annual Installed Capacity
1	Al Khaliq Industry 134/C Sie	4954546	Agricultural Implements	2004	1100	11	Agricultural Implements	600 Nos.
2	Aslam Engineering Works Burewala Road Chichawatni		Agricultural Implements	1988	150	5	Agricultural Implements	200 Nos.
3	Chowhan Trolley Maker Chak 109/12-L Okanwala Road Chichawatni		Agricultural Implements	1993	100	5	Agricultural Implements	500 Nos.
4	Gulzar Industry Key Zarai Alat Burewala Road Chichawatni		Agricultural Implements	1990	100	5	Agricultural Implements	200 Nos.
5	Iqbal Industry (Pvt) Ltd Lahore Road	4221752	Agricultural Implements	1980	5000	13	Agricultural Implements	3000 Nos.
6	Lucky Steel Casting (Pvt) Ltd Lahore Road	4460137	Agricultural Implements	1988	10000	31	Agricultural Implements	50000 Nos.
7	Mechno & Auto Industry 102/D Sie	4954219	Agricultural Implements	1994	600	7	Agricultural Implements	500 Nos.
8	Mujahid Industries Engg Works 108/D SIE	4953265	Agricultural Implements	1998	1600	10	Agricultural Implements	2000 Nos.
9	New Iqbal Agro Industry Gt Road	4223369	Agricultural Implements	1995	2000	23	Agricultural Implements	1000 Nos.
10	Opal Steel Mechanical (Pvt) Ltd Lahore Road Near Chowk Pakpattan	4225162	Agricultural Implements	1964	8000	C	Agricultural Implements	500 Nos.

Sr. No.	Name / Address of unit	Phone No. / Website	Industry	Estb. Year	Investment (Th.Rs.)	Emp	Product	Annual Installed Capacity
11	Sardar Engineering Works 111/D Sie	4554387	Agricultural Implements	1996	500	7	Agricultural Implements	15000 Nos.
12	Sohail Brothers Farm Industry 54/C S.I.E.	4007033	Agricultural Implements	1995	700	5	Agricultural Implements	1000 Nos.
13	Al Haider Industry Chowk Pakpattan Lahor Road	4460493	Aluminium Products	1988	10000	12	Aluminium Products	70 M.Tons
14	Mujahid Industry Pakpattan Road	4221756	Aluminium Products	1962	10000	16	Aluminium	150 M.Tons
15	N.A. Shafi Engineering Works, 43/B-1, Sie	4221752-3	Aluminium Products	1993	1400	18	Aluminium Products	50 M.Tons
16	New Dawood Engineering Tufail Shaheed Road	78063	Aluminium Products	1993	500	7	Aluminium Products	134 M.Tons
17	New Mujahid Aluminium Industries Pakpattan Chowk	4463260	Aluminium Products	1970	25000	40	Aluminium Products	100 M.Tons
18	Rafiq Engineering Tufail Shaheed Road	76082	Aluminium Products	1964	200	6	Aluminium Products	140 M.Tons
19	Sahiwal Aluminium Industry 88A/6R		Aluminium Products	1996	5000	5	Aluminium Products	100 M.Tons
20	Sahiwal Industries Foundry Lakkar Mandi G.T. Road	4465103	Aluminium Products	1993	350	7	Aluminium Products	240 M.Tons

Sr. No.	Name / Address of unit	Phone No. / Website	Industry	Estb. Year	Investment (Th.Rs.)	Emp	Product	Annual Installed Capacity
21	Zulfiqar Foundry 139/C S.I.E	4460514	Aluminium Products	1993	250	5	Aluminium Products	100 M.Tons
22	Ashraf Light Engineering Works 121/C, S.I.E	4554835	Auto Parts	1996	400	10	Auto Parts	1000 Th. Rs.
23	M.S. Industries 124/C, S.I.E.	4554083	Auto Parts	1992	200	6	Auto Parts	3600 Th. Rs.
24	M.S. Industry, 1/A, Sie	4554083	Auto Parts	2003	3602000	31	Auto Parts	3600 Th. Rs.
25	Mirza Altaf Hussain Workshop G.T. Road		Auto Parts	1996	700	6	Auto Parts	1000 Th. Rs.
26	Sardar Engg. Works 111/D-1 S.I.E.	4554387	Auto Parts	1996	300	10	Auto Parts	300 Th. Rs.
27	Sharif Agri Industry, 59/C, Sie	4555103	Auto Parts	1998	655098	14	Auto Parts	1000 Th. Rs.
28	Swallow Industries 119/C S.I.E.	4554284	Auto Parts	1995	400	5	Auto Parts	2250 Th. Rs.
29	Tariq Brothers Industries, 41/B, S.I.E.	4228541	Auto Parts	1995	300	5	Auto Parts	7500 Th. Rs.
30	United Industries 117/C, S.I.E.	4460285	Auto Parts	1992	500	6	Auto Parts	4000 Th. Rs.
31	Usman Engineering Works Arifwala Road	4223700, 4223800	Auto Parts	2001	15000	70	Boiler Recondition	15 Nos
32	Babu Biscuits Pir Bukhari Rd		Biscuits	1987	1200	C	Biscuits	600 M.Tons
33	Madina Biscuits (Pvt) Ltd. P.O. Box 51 Arifwala Rd	4460236	Biscuits	1995	8000	C	Biscuits	1200 M.Tons
34	Malik Ghulam Rasool Biscuits Arifwala Road		Biscuits	1990	1200	C	Biscuits	500 M.Tons

Sr. No.	Name / Address of unit	Phone No. / Website	Industry	Estb. Year	Investment (Th.Rs.)	Emp	Product	Annual Installed Capacity
35	Malik Muhammad Saeed Biscuits Near Montgomery Biscuits Factory G.T. Road		Biscuits	1991	2000	24	Biscuits	800 M.Tons
36	Mehtab Industries Ltd 5 Km Arifwala Road	4463652-4	Biscuits	1984	105470	120	Biscuits	2220 M.Tons
37	New Pioneer Industries 131-132/C, Small Indl. Estate	4554168	Biscuits	1989	375	C	Biscuits	200 M.Tons
38	Mughal Rcc Pipe Industry Gt Road	4465657	Cement Products	1970	3000	20	Rcc Pipe	40 Th.Nos
39	Rafiq Rcc Pipes Chak 135-A/9-L Multan Rd		Cement Products	1987	100	8	Cement Products	50 Th.Nos
40	Asia Compak (Pvt) Ltd Chak No.113/12-L Chichawatni	5757192	Chip / Straw Board	1997	50439	C	Chipboard	50000 Sheets
41	Haris Paper Mills, Chak No.9/14-L, Chichawatni		Chip / Straw Board	2004	300	13	Chip Board	10000 Sheets
42	Mughal Ply Wood & Flush Door Industries (Pvt) Ltd 13 Km Arifwala Road	4220655	Chip / Straw Board	1992	5283	27	Ven Board, Plywood	3500000 Sqft, 2490000 Sqft
43	Adil Cold Storage Kacha Noor Shah Road	400453	Cold Storage	1989	1500	C	Vegetable/ Fruits	8000 Bags

Sr. No.	Name / Address of unit	Phone No. / Website	Industry	Estb. Year	Investment (Th.Rs.)	Emp	Product	Annual Installed Capacity
44	Afzal Cold Storage 5 Km., Noor Shah Rd	400062	Cold Storage	2004	12500	27	Vegetable/ Fruits	10000 Bags
45	Aidal Cold Storage Burewala Road Ghaziabad Chichawatni	440090	Cold Storage	1999	6000	22	Vegetable/ Fruits	12000 Bags
46	Al Harrum Cold Storage Kucha Noor Shah Road 7 Km	4344200	Cold Storage	1999	5500	18	Vegetable/ Fruits	16000 Bags
47	Al-Abbas Industries Cold Storage 5 Km. Pakpattan Road	4305667	Cold Storage	1992	3500	33	Vegetable/ Fruits	12000 Bags
48	Al-Aziz Cold Storage 87/A/6R Noor Shah Road	4461829	Cold Storage	1990	2000	5	Vegetable/ Fruits	10000 Bags
49	Al-Fetha Cold Storage 96/6-R Kuchi Pakki Road	453800	Cold Storage	2003	11000	30	Vegetable/ Fruits	15000 Bags
50	Alhamdulillah Cold Storage 90/6-R	456506	Cold Storage	2001	3000	17	Vegetable/ Fruits	10000 Bags
51	Ali Asghar Cold Storage 89/6R Muhammad Pur Road	4551283	Cold Storage	1995	3000	5	Vegetable/ Fruits	8000 Bags
52	Ali Brothers Cold Storage 95/6R Kachi Pakki Road	451295	Cold Storage	1983	9000	22	Vegetable/ Fruits	25000 Bags
53	Ali Shan Cold Storage Qutib Shahana Road	451078	Cold Storage	2000	9000	15	Vegetable/ Fruits	10000 Bags

Sr. No.	Name / Address of unit	Phone No. / Website	Industry	Estb. Year	Investment (Th.Rs.)	Emp	Product	Annual Installed Capacity
54	Al-Madina Cold Storage Naianwala Road	4310140	Cold Storage	2003	8000	27	Vegetable/ Fruits	12000 Bags
55	Al-Makka Cold Storage 1/10-L Harappa Road	4330155	Cold Storage	1998	4000	17	Vegetable/ Fruits	16000 Bags
56	Al-Saeed Shah Cold Storage Adda Shreen Wala More Arifwala Road	4006661	Cold Storage	1998	5000	17	Vegetable/ Fruits	16000 Bags
57	Amin Cold Storage Gt Road Chichawatni	5482792	Cold Storage	1999	9000	26	Vegetable/ Fruits	30000 Bags
58	Asif Hafeez Cold Storage 187/9-L Multan Road Harrapa	5685801	Cold Storage	1990	4000	15	Vegetable/ Fruits	10000 Bags
59	Asim & Hameed Cold Storage Kicha Noor Shah Road	0303-7121655	Cold Storage	2000	10000	32	Vegetable/ Fruits	18000 Bags
60	Asim Brothers Cold Storage 97/6-R Kachi Pakki Road		Cold Storage	1989	2000	5	Vegetable/ Fruits	15000 Bags
61	Bismillah Cold Storage 95/6R Kachi Pakki Road	451660	Cold Storage	1980	12500	17	Vegetable/ Fruits	18000 Bags
62	But Cold Storage 84/5L Near Yousafwala		Cold Storage	1982	14000	15	Vegetable/ Fruits	12000 Bags
63	Ch. Brothers Cold Storage 96/6R Kachi Pakki Road	455596	Cold Storage	1979	11000	16	Vegetable/ Fruits	15000 Bags

Sr. No.	Name / Address of unit	Phone No. / Website	Industry	Estb. Year	Investment (Th.Rs.)	Emp	Product	Annual Installed Capacity
64	Ch.Ahsan Cold Storage 90/6-R	0303-53722	Cold Storage	1998	7000	21	Vegetable/ Fruits	8000 Bags
65	Ch.Cold Storage 187/9-L Multan Road	4006191	Cold Storage	1999	5000	19	Vegetable/ Fruits	24000 Bags
66	Circle Nine Cold Storage Adda Faqir Wala Noor Shah Road	4466772	Cold Storage	1997	2200	5	Vegetable/ Fruits	25000 Bags
67	Data Cold Storage Mandiali Road	452178	Cold Storage	1992	4500	22	Vegetable/ Fruits	12000 Bags
68	Data Hajwari Cold Storage Mandiali Road		Cold Storage	2001	8000	15	Vegetable/ Fruits	10000 Bags
69	Dilawar Cold Storage Gt Road Sahiwal	4310543	Cold Storage	1996	12000	15	Vegetable/ Fruits	10000 Bags
70	Faran Cold Storage 8/6-R	462059	Cold Storage	1999	10000	21	Vegetable/ Fruits	8000 Bags
71	Faridia Cold Storage 56/G-R Qutab Subhan Road	4951972	Cold Storage	1997	8500	12	Vegetable/ Fruits	9000 Bags
72	Fazal Cold Storage 87A/6R Qutab Shahana Road	4551600, 4551700	Cold Storage	1986	8000	15	Vegetable/ Fruits	16000 Bags
73	G.N. Cold Storage 90/6-R	454849	Cold Storage	2001	8000	32	Vegetable/ Fruits	18000 Bags
74	Galaxy Cold Storage 96/6R Kachi Pakki Road	451852	Cold Storage	1978	15000	16	Vegetable/ Fruits	24000 Bags
75	Ghazanfar Aslam Cold Storage Muhammad pur Road	453837	Cold Storage	2000	5000	37	Vegetable/ Fruits	50000 Bags

Sr. No.	Name / Address of unit	Phone No. / Website	Industry	Estb. Year	Investment (Th.Rs.)	Emp	Product	Annual Installed Capacity
76	Ghousia Cold Storage Chak 99/6-R Kachi Paki Road	4314292	Cold Storage	1996	8500	18	Vegetable/ Fruits	10000 Bags
77	Ghulam Jillani Cold Storage Madhali Road	4556787	Cold Storage	1992	4000	13	Vegetable/ Fruits	10000 Bags
78	Golden Cold Storage 6/14-L Gt Road		Cold Storage	1987	5500	20	Vegetable/ Fruits	10000 Bags
79	Green Cold Storage Mandhali Road	4420087-8	Cold Storage	2001	9000	17	Vegetable/ Fruits	10000 Bags
80	Gunj Shakar Cold Storage 70-4R Noorshah Road	9692007	Cold Storage	2000	6800	17	Vegetable/ Fruits	10000 Bags
81	Hafeez Sons Cold Storage 187/9-L Harappa	3035419	Cold Storage	1998	4500	21	Vegetable/ Fruits	12000 Bags
82	Haji Brothers Cold Storage 98/6-R	4314394	Cold Storage	1996	2200	22	Vegetable/ Fruits	25000 Bags
83	Hammad Cold Storage Kacha Noor Shah Road	455232	Cold Storage	2003	6000	15	Vegetable/ Fruits	16000 Bags
84	Iqbal Cold Storage 7 Km Pakpattan Road	73305350	Cold Storage	1996	8000	5	Vegetable/ Fruits	10000 Bags
85	Iris Cold Storage 70/4R Noor Shah Road	4344050	Cold Storage	1995	2000	21	Vegetable/ Fruits	25000 Bags
86	Ittefaq Cold Storage 135-A/9L Multan Road	4463359	Cold Storage	1984	5700	15	Vegetable/ Fruits	10000 Bags
87	Jalal Cold Storage 90/6-R	454490	Cold Storage	1992	2000	19	Vegetable/ Fruits	15000 Bags

Sr. No.	Name / Address of unit	Phone No. / Website	Industry	Estb. Year	Investment (Th.Rs.)	Emp	Product	Annual Installed Capacity
88	Jamal Cold Storage 82/6-R	4221982	Cold Storage	1998	10000	16	Vegetable/ Fruits	30000 Bags
89	Karam Cold Storage 82/6R Kacha Noor Shah Rd.	4465421	Cold Storage	1982	2000	6	Vegetable/ Fruits	20000 Bags
90	Khan Naeem Cold Storage 56/5L Lahore Road	4446542	Cold Storage	1987	5800	17	Vegetable/ Fruits	20000 Bags
91	Madina Cold Storage Madhali Road	453638	Cold Storage	1989	1700	22	Vegetable/ Fruits	20000 Bags
92	Mark One Cold Storage Kachi Pakki Road	4536531	Cold Storage	1990	2000	22	Vegetable/ Fruits	30000 Bags
93	Mian Ommer Cold Storage Adda Shabeel Noor Shah Road	4344240	Cold Storage	1999	5000	24	Vegetable/ Fruits	10000 Bags
94	Modern Cold Storage G.T. Road	4466054	Cold Storage	2000	8000	17	Vegetable/ Fruits	10000 Bags
95	Mughal Cold Storage Yousaf Wala Noor Shah Road	4301424	Cold Storage	2000	5000	16	Vegetable/ Fruits	8000 Bags
96	Muhammad Shafi Cold Storage Adda Booti Pall Harrapa Road	4301425	Cold Storage	1998	5800	17	Vegetable/ Fruits	16000 Bags
97	New Punjab Cold Storage 88/6R Qutab Shahan Road	451068	Cold Storage	1979	10500	22	Vegetable/ Fruits	25000 Bags
98	Noor-O-Barkat Cold Storage, 82/6-R		Cold Storage	1997	15000	16	Vegetable/ Fruits	15000 Bags

Sr. No.	Name / Address of unit	Phone No. / Website	Industry	Estb. Year	Investment (Th.Rs.)	Emp	Product	Annual Installed Capacity
99	Patwal Cold Storage Bye Pass Pakpattan Road	4305588	Cold Storage	2001	8000	21	Vegetable/ Fruits	12000 Bags
100	Pir Abdullah Shah Cold Storage Medhali Road	452587	Cold Storage	1995	11000	17	Vegetable/ Fruits	25000 Bags
101	Punjab Seed Corporation Pakpattan Road		Cold Storage	1976	61202	5	Vegetable/ Fruits	60000 Bags
102	Qadria And Co. Cold Storage 112/7R, Old Chichawatni	4611767	Cold Storage	1980	1000	8	Vegetable/ Fruits	5000 Bags
103	Rafique Cold Storage Muhammad Pur Road	450457	Cold Storage	1982	1200	27	Vegetable/ Fruits	48000 Bags
104	Rai Iqbal Niaz Cold Storage Multan Road Chichawatni	4611576	Cold Storage	1976	4300	17	Vegetable/ Fruits	10000 Bags
105	Rana Cold Storage 46/6-R	452509	Cold Storage	1999	2500	23	Vegetable/ Fruits	18000 Bags
106	Ravi Cold Storage Burewala Road Chichawatni	4612281	Cold Storage	1985	3500	13	Vegetable/ Fruits	8000 Bags
107	Rehmat Ullah Cold Storage 134/9-L G.T.Road	4464634	Cold Storage	1978	7500	17	Vegetable/ Fruits	15000 Bags
108	Saeed & Fazi Cold Storage G.T. Road Chichawatni	4480851	Cold Storage	1995	8000	25	Vegetable/ Fruits	18000 Bags

Sr. No.	Name / Address of unit	Phone No. / Website	Industry	Estb. Year	Investment (Th.Rs.)	Emp	Product	Annual Installed Capacity
109	Saeed Bashir Cold Storage 99/6-R Addha Butipal Kachi Pakki Road	4431423	Cold Storage	2000	4000	17	Vegetable/ Fruits	12000 Bags
110	Sahiwal Cold Storage Chak 90/6-R	453191	Cold Storage	2003	7100	42	Vegetable/ Fruits	20000 Bags
111	Shahid Rafique Cold Storage Nayan Wala Road	4310538	Cold Storage	1998	8000	29	Vegetable/ Fruits	25000 Bags
112	Shami Cold Storage 52/Gd Noor Shah Road	0320-5594665	Cold Storage	1985	1300	17	Vegetable/ Fruits	16000 Bags
113	Taj Cold Storage 87/6R Mahdhali Road	4552387	Cold Storage	1987	4500	22	Vegetable/ Fruits	18000 Bags
114	United Cold Storage 90/6-R	4553172	Cold Storage	1999	2500	6	Vegetable/ Fruits	24000 Bags
115	Waqas Cold Storage Bye Pass Arifwala Chowk	0303-7399181	Cold Storage	1998	18500	22	Vegetable/ Fruits	25000 Bags
116	Waraich & Awan Cold Storage No. 1 Lahore Road Yousafwala	4301023	Cold Storage	2001	8000	25	Vegetable/ Fruits	12000 Bags
117	Waraich Cold Storage And Ice Factory Lahore Road Yousafwala	4301243	Cold Storage	2000	8000	20	Vegetable/ Fruits	12000 Bags
118	Zafar Cold Storage & Ice Factory Harappa Bye Pass Road	4330210	Cold Storage	1999	5500	17	Vegetable/ Fruits	12000 Bags

Sr. No.	Name / Address of unit	Phone No. / Website	Industry	Estb. Year	Investment (Th.Rs.)	Emp	Product	Annual Installed Capacity
119	Zaidar Cold Storage 89/6-R Muhammadpur Road	452341	Cold Storage	1992	2400	20	Vegetable/ Fruits	10000 Bags
120	Zam Zam Cold Storage Chak 37/12L Gt Road Chichawatni	4611541	Cold Storage	1992	9500	17	Vegetable/ Fruits	10000 Bags
121	Abdul Jabbar Confectionery Pir Bukhari Road		Confectionery	1980	800	20	Confectionery	200 M.Tons
122	Abu Bakar Confectionery Pir Bukhari Road		Confectionery	1978	300	5	Confectionery	300 M.Tons
123	Al-Farid Sweets Haidery Mohallah		Confectionery	1990	400	10	Confectionery	200 M.Tons
124	Babu Confectionery Grain Market	0300-9698915	Confectionery	1986	400	12	Confectionery	100 M.Tons
125	Badar Din Confectionery Pir Bukhari Road		Confectionery	1989	300	10	Confectionery	200 M.Tons
126	Bunty Sweet Industry Lahore Road	4464596 0300-9694331	Confectionery	1992	1300	24	Confectionery	40 M.Tons
127	Bunty Sweets 128/B Near By Pass Lahore Road	4220418 0300-6907816	Confectionery	1992	1300	24	Sweets	150 M.Tons
128	Diamond Sweets Grain Market Sahiwal		Confectionery	1978	500	15	Confectionery	100 M.Tons
129	Din Muhammad Pehlwan Confectionery Grain Market		Confectionery	1982	400	10	Confectionery	100 M.Tons

Sr. No.	Name / Address of unit	Phone No. / Website	Industry	Estb. Year	Investment (Th.Rs.)	Emp	Product	Annual Installed Capacity
130	Faranco Foods 6/A, S.I.E.	4222022	Confectionery	1996	100	4	Confectionery	45 M.Tons
131	Furqan Enterprises Rasulpur Colony 90/9-L	4222235-60300-6990969	Confectionery	1980	2000	47	Confectionery	100 M.Tons
132	Haji Suleman Saleem Sweet Confectionery Mohallah Tailianwala Grain Market		Confectionery	1982	400	12	Confectionery	100 M.Tons
133	Hallas International Food Products 6 Km Arifwala Road	4461802	Confectionery	1988	5000	24	Confectionery	50 M.Tons
134	Hasan Agro Food Industries 173/A, S.I.E.	4554249	Confectionery	1990	1500	5	Confectionery	100 M.Tons
135	M. Iqbal Billa Confectionery Behind Cemetery Pir Bukhari Road		Confectionery	1982	400	10	Confectionery	100 M.Tons
136	Malik Abdul Hameed Confectionery Model Town		Confectionery	1985	200	6	Confectionery	200 M.Tons
137	Malik Abdul Rasheed Confectionery Model Town		Confectionery	1984	200	8	Confectionery	100 M.Tons
138	Malik Abdul Rehman Confectionery Ward # 6, Grain Market		Confectionery	1982	400	14	Confectionery	100 M.Tons
139	Malik Bilal Confectionery Ward # 6, Grain Market		Confectionery	1986	300	12	Confectionery	100 M.Tons

Sr. No.	Name / Address of unit	Phone No. / Website	Industry	Estb. Year	Investment (Th.Rs.)	Emp	Product	Annual Installed Capacity
140	Malik Fajar Din Confectionery Ward # 6, Grain Market		Confectionery	1989	400	12	Confectionery	100 M.Tons
141	Malik M. Munshi Confectionery Ward # 6, Grain Market		Confectionery	1983	400	15	Confectionery	200 M.Tons
142	Malik M. Tariq Confectionery Chowk G.A. Azam, Grain Market		Confectionery	1987	400	8	Confectionery	50 M.Tons
143	Malik M. Umar Confectionery (No.2) Street # 1, Model Town		Confectionery	1991	200	6	Confectionery	300 M.Tons
144	Malik M. Yasin Confectionery Ward # 6, Grain Market		Confectionery	1985	300	14	Confectionery	100 M.Tons
145	Malik Muhammad Umar Confectionery Street # 1, Model Town		Confectionery	1990	300	10	Confectionery	50 M.Tons
146	Malik Noor Muhammad Confectionery Grain Market		Confectionery	1986	450	5	Confectionery	200 M.Tons
147	Malik Orang Zeb Confectionery Ward # 6, Grain Market		Confectionery	1980	400	10	Confectionery	100 M.Tons
148	Malik Sharaf- Ud-Din Confectionery Ward # 6, Grain Market		Confectionery	1980	300	8	Confectionery	100 M.Tons

Sr. No.	Name / Address of unit	Phone No. / Website	Industry	Estb. Year	Investment (Th.Rs.)	Emp	Product	Annual Installed Capacity
149	Malik Zahid Confectionery Grain Market		Confectionery	1983	300	8	Confectionery	100 M.Tons
150	Metro Sweet Confectionery Near Montgomery Biscuits Factory		Confectionery	1990	400	12	Confectionery	100 M.Tons
151	Montgomery Flour & General Mills Lhr-Mln Road	74408-10	Confectionery	1965	47018	C	Confectionery / Biscuits	2500 M.Tons
152	Rehman Industries Super Candy, 8-Km, Arifwala Road	74928	Confectionery	1995	800	8	Confectionery	100 M.Tons
153	Sh. Abdul Qadir Confectionery Grain Market		Confectionery	1980	300	5	Confectionery	300 M.Tons
154	Shan Sweets Model Town		Confectionery	1985	1000	20	Confectionery	200 M.Tons
155	Syed Arif Hassan Confectionery Lala Zar Cly		Confectionery	1984	500	16	Confectionery	100 M.Tons
156	Trend International, 30/B, SIE	4557220	Cosmetics	1999	1177006	17	Cosmetics	2800 Th. Nos.
157	Ali Cotton Ginning & Pressing Factory Ghaziabad Burewala Rd Chichawatni	5440078	Cotton Ginning And Pressing	1986	10000	C	Cotton Lint/ Seed	4 Sawgins , 1 Press
158	Ali Muhammad Cotton Ginners Chak 31/11-L, Ghaziabad Chichawatni		Cotton Ginning And Pressing	1991	4000	25	Cotton Lint/ Seed	4 Sawgins , 1 Press

Sr. No.	Name / Address of unit	Phone No. / Website	Industry	Estb. Year	Investment (Th.Rs.)	Emp	Product	Annual Installed Capacity
159	Amir Masood Cotton Industries Pakpattan Road	4550435	Cotton Ginning And Pressing	1984	7000	C	Cotton Lint/ Seed	3 Sawgins , 1 Press
160	Ansary Cotton Factory Burewala Road Chichawatni	5440199	Cotton Ginning And Pressing	1990	7000	35	Cotton Lint/ Seed	4 Sawgins , 1 Press
161	Bagh-O-Bahar Cotton Factory Pakpattan Road	6368018	Cotton Ginning And Pressing	1999	11000	36	Cotton Lint/ Seed	4 Sawgins , 1 Press
162	Bahu Cotton Factory Chak 103/12-L Okanwala Rd, Kassowal	5410535	Cotton Ginning And Pressing	1991	6000	19	Cotton Lint/ Seed	4 Sawgins , 1 Press
163	Bismillah Cotton Factory 3 Km Gt Road Sahiwal Road Chichawatni	5485448	Cotton Ginning And Pressing	1998	5000	29	Cotton Lint/ Seed	4 Sawgins , 1 Press
164	Bismillah Cotton Factory Chak 8/14-L, Kassowal		Cotton Ginning And Pressing	1992	3000	20	Cotton Lint/ Seed	4 Sawgins , 1 Press
165	Blue Star Cotton G/P/ Factory Chak 41/12-L, Burewala Rd, Chichawatni	5411544	Cotton Ginning And Pressing	1993	4200	25	Cotton Lint/ Seed	4 Sawgins , 1 Press
166	Ch Tufail & Co Cotton Factory Okanwala Rd Kassowal Chichawatni	5481731	Cotton Ginning And Pressing	1992	5500	25	Cotton Lint/ Seed	4 Sawgins , 1 Press
167	Ch. Ismaeel Cotton G/P/ Factory Chak 37/12-L Gt Road Chichawatni	2312007	Cotton Ginning And Pressing	1992	12500	46	Cotton Lint/ Seed	4 Sawgins , 1 Press

Sr. No.	Name / Address of unit	Phone No. / Website	Industry	Estb. Year	Investment (Th.Rs.)	Emp	Product	Annual Installed Capacity
168	Ch. Shah Muhammad & Company Okanwala Road Chichawatni	5481894	Cotton Ginning And Pressing	1978	5500	22	Cotton Lint/ Seed	4 Sawgins , 1 Press
169	Ch. Muhammad Tufail & Co 111/12-L, Link Okanwala Road, Kassowal		Cotton Ginning And Pressing	1992	35000	25	Cotton Lint/ Seed	4 Sawgins , 1 Press
170	Charagh Din & Co Cotton Ginners 8-14/L Kassowal	5410442, 5410542	Cotton Ginning And Pressing	1994	50000	58	Cotton Lint/ Seed	4 Sawgins , 1 Press
171	Chaudhary Model Cotton G/P Factory (Pvt) Ltd Chak No.39-12/L Chichawatni	4453245, 4453245	Cotton Ginning And Pressing	1991	3100	33	Cotton Lint/ Seed	4 Sawgins , 1 Press
172	Chaudhry Cotton Factory And Oil Mills Gt Road Iqbal Nagar	5420022-28	Cotton Ginning And Pressing	1997	7200	18	Cotton Lint/ Seed	4 Sawgins , 1 Press
173	Chohan Industries Arifwala Road	4463750	Cotton Ginning And Pressing	1995	16000	20	Cotton Lint/ Seed	4 Sawgins , 1 Press
174	Chohan Industries Yousafwala	78289-74829	Cotton Ginning And Pressing	1985	7000	C	Cotton Lint/ Seed	5 Sawgins , 1 Press
175	Data Cotton Factory G.T. Road Kassowal		Cotton Ginning And Pressing	1987	3000	C	Cotton Lint/ Seed	4 Sawgins , 1 Press
176	Data Cotton Factory Okanwala Rd Kassowal		Cotton Ginning And Pressing	1988	3200	C	Cotton Lint/ Seed	4 Sawgins , 1 Press

Sr. No.	Name / Address of unit	Phone No. / Website	Industry	Estb. Year	Investment (Th.Rs.)	Emp	Product	Annual Installed Capacity
177	De-Becra Cotton Factory Burewala Road Ghaziabad Chichawatni	5440390-5440090	Cotton Ginning And Pressing	1988	10000	28	Cotton Lint/ Seed	4 Sawgins , 1 Press
178	Fateh Industries 12-Km, Arifwala Road		Cotton Ginning And Pressing	1986	6000	C	Cotton Lint/ Seed	4 Sawgins , 1 Press
179	Ghousia And Co Cotton Ginners Kassawal Chichawatni	5410400	Cotton Ginning And Pressing	1998	6200	33	Cotton Lint/ Seed	4 Sawgins , 1 Press
180	Gill Cotton Factory Chak 6/11-L Gt Road Chichawatni	4315355	Cotton Ginning And Pressing	1992	9500	C	Cotton Lint/ Seed	4 Sawgins , 1 Press
181	Gulistan Cotton Factory Pakpattan Road	4305315	Cotton Ginning And Pressing	1994	10000	19	Cotton Lint/ Seed	4 Sawgins , 1 Press
182	H.M.Sharif Cotton Ginning Factory Chichawatni	613436-613310	Cotton Ginning And Pressing	1988	3500	C	Cotton Lint/ Seed	4 Sawgin 1 Press
183	Haji Dossa Ltd.Cotton Ginning & Pressing Factory Harappa	4228032	Cotton Ginning And Pressing	1968	8500	55	Cotton Lint/ Seed	4 Sawgin 1 Press
184	Haji M. Sharif Gill & Co Okanwala Road Chichawatni		Cotton Ginning And Pressing	1986	3500	C	Cotton Lint/ Seed	4 Sawgins , 1 Press

Sr. No.	Name / Address of unit	Phone No. / Website	Industry	Estb. Year	Investment (Th.Rs.)	Emp	Product	Annual Installed Capacity
185	Haji Mehr Din Cotton Ginning & Pressing Factory Chak No.117/12-L Kassowal Chichawatni Gt Road	5410804	Cotton Ginning And Pressing	1992	7000	29	Cotton Lint/ Seed	4 Sawgins , 1 Press
186	Ittehad Kathoo Cotton Factory Chak 15/11-L, Burewala Road, Chichawatni		Cotton Ginning And Pressing	1996	4200	C	Cotton Lint/ Seed	4 Sawgins , 1 Press
187	Kassowal Cotton Factory Kassowal Chichawatni	5410500	Cotton Ginning And Pressing	1984	7000	19	Cotton Lint/ Seed	4 Sawgins , 1 Press
188	Kiran Cotton Factory 7-Km, Arifwala Road	76125	Cotton Ginning And Pressing	1992	7000	C	Cotton Lint/ Seed	4 Sawgins , 1 Press
189	Lalazar Cotton Industries (Pvt) Ltd Pakpattan Road	4305482	Cotton Ginning And Pressing	1988	5000	24	Cotton Lint/ Seed	4 Sawgins , 1 Press
190	Madina Cotton Factory Chak No.4/14-L Kassowal Chichawatni	5410339	Cotton Ginning And Pressing	1999	7000	19	Cotton Lint/ Seed	4 Sawgins , 1 Press
191	Makkah Model Industries Chak No.110/12-L Chichawatni	5483882	Cotton Ginning And Pressing	1989	5000	25	Cotton Lint/ Seed	4 Sawgins , 1 Press
192	Malik Cotton Factory, Pakpattan Road		Cotton Ginning And Pressing	1984	5000	C	Cotton Lint/ Seed	4 Sawgins , 1 Press

Sr. No.	Name / Address of unit	Phone No. / Website	Industry	Estb. Year	Investment (Th.Rs.)	Emp	Product	Annual Installed Capacity
193	Mehria Cotton Ginning & Pressing Factory Kamalia Road Chichawatni	5485300	Cotton Ginning And Pressing	1995	6500	35	Cotton Lint/ Seed	4 Sawgins , 1 Press
194	Mian Ghulam Nabi Nazir Ahmad Cotton Factory And Oil Mills (Pvt) Ltd Lahore Multan Road	4462649	Cotton Ginning And Pressing	1967	2142	21	Cotton Lint/ Seed	4 Sawgins , 1 Press, 3 Expeller
195	Modern Cotton Ginning & Pressing Factory G.T.Road	0441-62649	Cotton Ginning And Pressing	1968	7000	20	Cotton Lint/ Seed	8 Sawgins , 1 Press
196	Muslim Cotton Factory 14/11-L, Burewala Road Chichawatni	4611108	Cotton Ginning And Pressing	1986	4000	C	Cotton Lint/ Seed	4 Sawgins , 1 Press
197	Nadeem Akram Industries Cotton Ginner & Oil Mills G.T. Road Yousafwala	4301049	Cotton Ginning And Pressing	1999	7500	C	Cotton Lint/ Seed	4 Sawgins , 1 Press, 2 Expeller
198	Noor Cotton Industries Chak Pakpattan Road Wakeel Wala	4460126	Cotton Ginning And Pressing	1987	5000	C	Cotton Lint/ Seed	4 Sawgins , 1 Press
199	Pearl Cotton Factory 111/7-R Parani Chichawatni	5480303	Cotton Ginning And Pressing	1985	7000	12	Cotton Lint/ Seed	4 Sawgins , 1 Press
200	Poswal Cotton Factory Chak No.37/12-L Gt Road Chichawatni	5480479	Cotton Ginning And Pressing	1985	13500	50	Cotton Lint/ Seed	4 Sawgins , 1 Press

Sr. No.	Name / Address of unit	Phone No. / Website	Industry	Estb. Year	Investment (Th.Rs.)	Emp	Product	Annual Installed Capacity
201	Rai Cotton Factory Adda Kassowal Chichawatni		Cotton Ginning And Pressing	1990	2800	24	Cotton Lint/ Seed	4 Sawgins , 1 Press
202	Raja Cotton Factory Chak No.5/11-L Chichawatni	4315322	Cotton Ginning And Pressing	1988	11500	31	Cotton Lint/ Seed	4 Sawgins , 1 Press
203	Rana Brothers Cotton & Oil Industries Arifwala Road	4465590, 4466182	Cotton Ginning And Pressing	2000	4000	25	Cotton Lint/ Seed	4 Sawgins , 4 Expellers
204	Riaz Saeed Cotton Industries 8-Km, Multan Road	4463574, 4475645	Cotton Ginning And Pressing	1990	8000	30	Cotton Lint/ Seed	4 Sawgins , 1 Press
205	Shabir Chowhan Cotton Mills 6 Km Multan Road	4474236	Cotton Ginning And Pressing	1992	8000	30	Cotton Lint/ Seed	4 Sawgins , 1 Press
206	Shaheen Cotton Factory Chak 92/12-L, Burewala Rd Chichawatni		Cotton Ginning And Pressing	1986	3100	30	Cotton Lint/ Seed	4 Sawgins , 1 Press
207	Shan Cotton Ginning & Oil Mills Pakpattan Road	4466613	Cotton Ginning And Pressing	1992	12000	18	Cotton Lint/ Seed	4 Sawgins , 1 Press, 2 Expeller
208	Silver Fiber Cotton Industry Burewala Road Chichawatni	5434178	Cotton Ginning And Pressing	2001	4100	20	Cotton Lint/ Seed	4 Sawgins , 1 Press
209	Sky Cotton Ginning Industries 6-Km Pakpattan Road	4478324	Cotton Ginning And Pressing	1991	8000	24	Cotton Lint/ Seed	4 Sawgins , 1 Press

Sr. No.	Name / Address of unit	Phone No. / Website	Industry	Estb. Year	Investment (Th.Rs.)	Emp	Product	Annual Installed Capacity
210	Umar Usman Cotton Industries Ghaziabad, Chichawatni		Cotton Ginning And Pressing	1991	4000	36	Cotton Lint/ Seed	4 Sawgins , 1 Press
211	Union Cotton Ginning And Pressing Factory 97/9-L Pakpattan Road	4305201	Cotton Ginning And Pressing	1986	5000	42	Cotton Lint/ Seed	4 Sawgins , 1 Press
212	Usmani Cotton Ginning & Pressing Factory Chak No.110/12-L Chichawatni	0445-610602	Cotton Ginning And Pressing	1988	2800	24	Cotton Lint/ Seed	4 Sawgins , 1 Press
213	Yousaf Rahmat Industries (Pvt) Ltd Cotton Factory Pakpattan Road	4305849	Cotton Ginning And Pressing	1990	6200	11	Cotton Lint/ Seed	4 Sawgins , 1 Press
214	Zohaib Model Industries (Cotton Ginning & Pressing), Chak No.22/12-L, Ghaziabad, Chichawatni	5440100, 5440108	Cotton Ginning And Pressing	1986	8500	16	Cotton Lint/ Seed	4 Sawgins , 1 Press
215	Adams Milk Foods (Pvt) Ltd Tufail Shaheed Road	4461287, 4467523	Dairy Products	1994	8000	36	Cheese , Desi Ghee	400 M.Tons, 20 M.Tons
216	Batala Kassar Industries (Pvt) Ltd. Lahore Multan Gt Road	4467436-7	Dairy Products	1983	23000	16	Cheese , Desi Ghee	90 M.Tons, 9 M.Tons

Sr. No.	Name / Address of unit	Phone No. / Website	Industry	Estb. Year	Investment (Th.Rs.)	Emp	Product	Annual Installed Capacity
217	Eden'S Milk Products Multan Road Arif Chowk	4223864-5	Dairy Products	2002	5720	10	Cheese	40 M.Tons
218	Engro Foods, 10-Km Pakpattan Road	4305775	Dairy Products	2008	500000	200	Milk Processing	120000 Million Litres
219	Green Dairies Tufail Shaheed Road		Dairy Products	1975	674	C	Milk Processing	15 Million Litres
220	Dr.Sethi (Pharma) Industries 3- Burewala Road Chichawatni	5484914	Drugs & Pharmaceuticals	1990	10000	28	Zinc Oxide	1440 Th. Nos.
221	Sailor Laboratories 126-133/C Small Industrial Estate	4462561	Drugs & Pharmaceuticals	1993	1778	14	Syrups	180 Th.Litres
222	Abdullah Engineering, 7/A, Sie	4555420	Electric Goods	1994	2765400	10	Electric Goods	8100000 Nos.
223	Ch. Muhammad Din And Sons 165/B S.I.E.	4555594	Electric Goods	1980	1000	13	Water Cooler , Air Coolers	200 Nos. , 600 Nos.
224	Cherry Electrical Industries Arifwala Road		Electric Goods	1990	3750	46	Water Cooler , Air Coolers , Fans	200 Nos. , 3100 Nos. , 4000 Nos.
225	Colux Electrical Industries 146/B Sie	4554080	Electric Goods	1991	5000	7	Electrical Appliances	2000 Nos.
226	Cool Breez, 92/D, S.I.E.	4555524	Electric Goods	1990	1000	5	Geyser , Air Coolers	2000 Nos. , 2000 Nos.
227	Ghazi Cables 125/C, S.I.E.	4554125	Electric Goods	1992	300	5	Electric Tube	250 M.Tons

Sr. No.	Name / Address of unit	Phone No. / Website	Industry	Estb. Year	Investment (Th.Rs.)	Emp	Product	Annual Installed Capacity
228	Ksc Electrical Industries Police Lines Road	4462420	Electric Goods	1989	9000	13	Electric Fan, Geysers, Room Coolers	700 Nos, 1000 Nos, 500 Nos
229	Qamar Industries Yousafwala	76950	Electric Goods	1996	2000	8	Geysers, Air Coolers	200 Nos., 400 Nos.
230	Abdullah Industries 176/B.7 Police Line Road	4462420	Fans/Coolers	1992	1250	8	Electric Fan	4000 Nos.
231	Adil Flour Mills, Chichawatni	5440090	Flour Mills	2006	40000	22	Flour	160 M.Tons/Day
232	Baba Farid Flour Mills Pakpattan Road	4462340	Flour Mills	1983	19800	18	Flour	240 M.Tons/Day
233	Baba Muhammad Hussain Roller Flour Mills Pakpattan Road	4305100	Flour Mills	1993	3500	17	Flour	160 M.Tons/Day
234	Chaudhry Flour Mills, Chichawatni	5480642	Flour Mills	2006	40000	20	Flour	200 M.Tons/Day
235	Lalazar Flour Mills Kacha Noor Shah Road	4344174	Flour Mills	1998	3400	18	Flour	100 M.Tons/Day
236	M. Ramzan Flour Mills G.T. Road, Chichawatni	5448644	Flour Mills	1973	3000	14	Flour	100 M.Tons/Day
237	Mehtab Flour Mills Arifwala Road	4220277	Flour Mills	1991	10000	23	Flour	160 M.Tons/Day
238	Montgomery Modern Flour & Rice Mills Gt Road	4462848	Flour Mills	1965	3120	20	Flour	160 M.Tons/Day

Sr. No.	Name / Address of unit	Phone No. / Website	Industry	Estb. Year	Investment (Th.Rs.)	Emp	Product	Annual Installed Capacity
239	Halls International Food Products Sahiwal Arifwala Road	4461802	Food Products	1989	8000	24	Food Items	125 M.Tons
240	Hassan Agro Food Industry 173/A Sie	4554249	Food Products	1990	2000	10	Food Items	60 M.Tons
241	Delta Foundry 147/B Sie	4554219	Foundry Products	2000	2000	10	Foundry Products	1000 M.Tons
242	Mughal Steel Casting Noor Shah Road Yousafwala	4301424	Foundry Products	1987	2000	18	Foundry Products	5000 M.Tons
243	Mujahid Foundry And Workshop Chowk Pakpattan		Foundry Products	1952	3500	8	Foundry Products	4800 M.Tons
244	Opal Steel Casting (Pvt) Ltd. Lahore Road	76162	Foundry Products	1964	1500	5	Foundry Products	4000 M.Tons
245	K.Z. Industries, 3/A, Sie	4554058	Industrial Machinery	1998	2794802	10	Biscuit Plant	5500 Th. Rs.
246	New Dawood Engineering Tufail Shaheed Road	78063	Industrial Machinery	1993	500	7	Biscuit Plant	5000 Th. Rs.
247	Barkat Jute Textile Chak No.87/6-R		Jute Tat	1978	200	6	Jute Tat	4 Looms
248	M. Ashraf Jute Tat Jahaz Ground	4552941	Jute Tat	1975	1000	15	Jute Tat	50 Looms
249	Aziz Leather Craft 150/A Sie	455940-43, 0321-6925386	Leather Garments	1997	20000	210	Leather Jacket	100000 Pcs
250	Leather Coordinator Tufail Shaheed Road	4220292, www.leetcodeinators.com	Leather Garments	1992	47210	229	Leather Jacket, Waist Coat	120000 Pcs, 1000 Pcs

Sr. No.	Name / Address of unit	Phone No. / Website	Industry	Estb. Year	Investment (Th.Rs.)	Emp	Product	Annual Installed Capacity
251	Pak Taiba Pure Water 157-B Sie	4554209	Mineral Water	2000	1100	14	Mineral Water	50 Th.Litres
252	Al-Madina Packages 130/C Sie Sahiwal	4462531	Packages	1993	250	5	Packing Material	20 Lac. Rs.
253	Hanoon Chemicals Industries 87/C Sie	4461266	Paints And Varnishes	1989	500	15	Paints	100000 Litres
254	Karry Club, 8-Km Pakpattan Road	4305415-16	Parachute Bags	1999	3000	30	Parachute Bags	520000 Nos.
255	Afzal Industries 43-B, Sie 66786	4466786	Plastic Products	1995	300	5	Plastic Products	10 M.Tons
256	Arroj Industries, Pvc Pipe Mfg. 126,133/Ci Sie.	4557755	Plastic Products	1992	1600	12	Plastic Products	600 M.Tons
257	Rahmat Enterprises 55/C, Small Indl. Estate	4465295	Plastic Products	1993	400	6	Plastic Products	415 M.Tons
258	Stalwart Seeds & Chemical, 10-Km Multan Road	0321-6901365	Poultry Feed	2008	20000	10	Hibreed Maize Seeds	3000 M.Tons
259	Supreme Feeds, 5-Km Arifwala Road Bye Pass	0300-4887921	Poultry Feed	2007	15000	50	Poultry Feed	19500 M.Tons
260	Ahmed Rice Mills Grain Market	4464307, 4464316	Rice Mills	1985	7000	7	Rice	4 Hullers
261	Al Madina Rice Mills Chak No.99/9-L Pakpattan Road	4305248	Rice Mills	2000	9000	17	Rice	2 Hullers

Sr. No.	Name / Address of unit	Phone No. / Website	Industry	Estb. Year	Investment (Th.Rs.)	Emp	Product	Annual Installed Capacity
262	Ali Rice Mills Multan Road Near Chak 136/9-L	4006285	Rice Mills	1999	8500	14	Rice	4 Hullers
263	Al-Rehmat Rice Mills, 18- Km Arifwala Road	0346- 7443891	Rice Mills	2006	40000	25	Rice	4 Polishers
264	Baba Farid Rice Mills, 5- Km Pakpattan Road		Rice Mills	2008	20000	25	Rice	4 Polishers
265	Bismillah Rice Mills 8 Km Arifwala Road	4462983	Rice Mills	2003	6000	29	Rice	5 Shellers
266	Bismillah Rice Mills Pakpattan Road	4305037	Rice Mills	1994	7000	22	Rice	3 Hullers
267	Chohan Rice (Yousaf Rehmat Cotton Factory) Pakpattan Road		Rice Mills	1998	1400	12	Rice	5 Hullers
268	Faridia Oil Rice Mills Ne.Rai Masod Cotton Pakpattan Road		Rice Mills	1920	1800	15	Rice	5 Hullers
269	Faridia Rice Mills 9 Km Pakpattan Road	4305214	Rice Mills	1980	1400	10	Rice	4 Hullers
270	Fatima Industries Rice Mills, Pakpattan Road	0321- 6925404	Rice Mills	2007	60000	20	Rice	4 Polishers
271	Ghulam Nabi Rice Mills Grain Market		Rice Mills	1995	1000	5	Rice	3 Hullers

Sr. No.	Name / Address of unit	Phone No. / Website	Industry	Estb. Year	Investment (Th.Rs.)	Emp	Product	Annual Installed Capacity
272	Good Luck Rice Mills (Unit No.1), Near Post Office Grain Market	4227574, 0321-8690210	Rice Mills	2008	10000	21	Rice	4 Polishers
273	Haji Allah Rakha Rice Plan & General Industries, 10-Km Pakpattan Road	0321-8691450	Rice Mills	2007	30000	19	Rice	4 Polishers
274	Haji Atta Muhiud Din Rice Mills And General Industry Pakpattan Road	4305209	Rice Mills	1999	10200	8	Rice	4 Hullers
275	Haji Ghulam Nabi Rice Mills Wakilwala Pakpattan Road		Rice Mills	1995	1200	12	Rice	4 Hullers
276	Imran Rice Mills Chak # 99/9L, Pakpattan Road,		Rice Mills	1991	3000	18	Rice	4 Hullers
277	Ittefaq Rice Mills Jinnah Town Bye Pass Road Harrapa	4320516-7, 4227069	Rice Mills	2002	8000	20	Rice	3 Hullers
278	Ittefaq Rice Mills, Arifwala Road	4222498	Rice Mills	1994	20000	16	Rice	4 Polishers
279	Khalid Javid Rice Mills Grain Market	71327	Rice Mills	1997	2200	7	Rice	3 Hullers
280	M Hanif Rice Mills 14 Km Arifwala Road	4462119	Rice Mills	1996	5000	13	Rice	3 Hullers

Sr. No.	Name / Address of unit	Phone No. / Website	Industry	Estb. Year	Investment (Th.Rs.)	Emp	Product	Annual Installed Capacity
281	Makkah Rice Mills, Arifwala Road		Rice Mills	2006	15000	22	Rice	4 Polishers
282	Maqsood Rice Mills Arifwala Road		Rice Mills	1980	1500	13	Rice	3 Hullers
283	Mehtab Rice Mills, Arifwala Road	0300-8696227	Rice Mills	2005	15000	18	Rice	4 Polishers
284	Mohal Brothers Rice Mills Rasoolpur Road, Manzoor Colony		Rice Mills	1982	800	5	Rice	4 Hullers
285	Muhammad Din Rice Mills Arifwala Road	4227563	Rice Mills	1983	2000	14	Rice	3 Shellers
286	Muhammad Iqbal Rice Mills Sirki Bazar		Rice Mills	1972	1000	8	Rice	4 Hullers
287	Munir & Sons Rice Mills Arifwala Road		Rice Mills	1990	1800	8	Rice	4 Hullers
288	Nabeel Rice Mills 6 Km Arifwala Road	4227625	Rice Mills	2002	1500	25	Rice	2 Hullers, 3 Polishers
289	Naz Rice Mills, Arifwala Road		Rice Mills	1960	1000	7	Rice	4 Hullers
290	Punjab Rice Mills 7 Km Pakpattan Road	4305809	Rice Mills	2001	800	17	Rice	4 Hullers
291	Rahman Rice Mills Near Baba Mohd Hussain Flour Mills Pakpatta Road	74707	Rice Mills	1995	1000	6	Rice	4 Hullers
292	S.M. Rice Factory, 18-Km Arifwala Road		Rice Mills	2007	50000	25	Rice	4 Polishers

Sr. No.	Name / Address of unit	Phone No. / Website	Industry	Estb. Year	Investment (Th.Rs.)	Emp	Product	Annual Installed Capacity
293	Safia Rice Mills Pakpattan Road	4305300	Rice Mills	1980	5744	22	Rice	1 Sheller
294	Saqlain Rice Mills, Arifwala Road	0300-9692521	Rice Mills	2006	20000	21	Rice	4 Polishers
295	Sardar Rice Mills, Gain Market	0322-8652250	Rice Mills	1998	15000	19	Rice	3 Polishers
296	Shafi Ishaq Rice Factory Noor Shah Road		Rice Mills	1980	600	5	Rice	4 Hullers
297	Sheikh Nadeem Rice Mills, Arifwala Road	0300-8696227	Rice Mills	2008	25000	17	Rice	4 Polishers
298	Star Rice Mills Pakpattana Road	4305600	Rice Mills	2003	5000	22	Rice	5 Hullers
299	Taj Rice Mills Pakpattan Road	4305136	Rice Mills	1999	1500	20	Rice	1 Huller
300	Taj Sons Rice Mills 136/9-L Multan Road	4006464	Rice Mills	2000	1300	14	Rice	3 Hullers
301	Usman Rice Mills, Arifwala Road	4227400	Rice Mills	2004	4500	17	Rice	4 Hullers
302	Yousaf Brothers Rice Mills Pakpattan Road	4305849	Rice Mills	2001	4000	26	Rice	4 Hullers
303	Shahid & Zulfiqar Soap Factory, Chak No.44/12-L, Chichawatni		Soap & Detergent	2000	270	5	Washing Soap	100 M.Tons
304	Mian Industries 129/C, Sie		Spray Machine	1995	250	5	Spray Machine	1000 Nos.

Sr. No.	Name / Address of unit	Phone No. / Website	Industry	Estb. Year	Investment (Th.Rs.)	Emp	Product	Annual Installed Capacity
305	Abdullah Cotton Factory, 38/B, Sie	4557251	Surgical Cotton / Bandages	1996	1423546	17	Surgical Cotton	1200 M.Tons
306	Kohinoor Industries 160/B Sie	4554103	Surgical Cotton / Bandages	1980	2500	30	Surgical Bandages	120 M.Tons
307	Aziz Tanneries (Pvt) Ltd Gt Road Harappa Sahiwal	4468341-3	Tannery	1952	98560	340	Leather Board	10000 M.Tons
308	Hanif Tannery Arifwala Road	4222497	Tannery	2000	7000	15	Leather	120 M.Tons
309	Jamil Latif Industries 157/B, S.I.E.	4460209	Tannery	1995	500	6	Leather Board	100 M.Tons
310	Kishwar Tanneries Pakpattan Road	77160	Tannery	2000	3000	19	Leather	100 M.Tons
311	Latif Akbar Tannery 4 Km Arifwala Road	4466298	Tannery	1998	3200	8	Leather	40 M.Tons
312	Latif Tanneries (Pvt) Ltd Kacha Noor Shah Road	4221012	Tannery	1952	2529	20	Leather	180 M.Tons
313	Maqbool Tanneries Chak 135/9-L Multan Road, Sahiwal	76976	Tannery	1975	1800	14	Leather	50 Th.Kgs.
314	Muhammad Saleem Tannery Arifwala Road	4224841	Tannery	2000	2700	9	Leather	30 M.Tons
315	Muhammad Sharif Tannery Arifwala Road	4222496	Tannery	2000	2100	8	Leather	40 M.Tons
316	Qamar Tanning Co Arifwala Road	4467205	Tannery	1991	18362	22	Leather	30 M.Tons
317	Rafique Tannery Arifwala Road	4466565	Tannery	2000	3200	7	Leather	30 M.Tons

Sr. No.	Name / Address of unit	Phone No. / Website	Industry	Estb. Year	Investment (Th.Rs.)	Emp	Product	Annual Installed Capacity
318	Sadaqat Tannery Company Sahiwal Kacha Noor Shah Road, Sahiwal	74031	Tannery	1972	3300	30	Leather	1200000 Kgs.
319	Yousaf Tannery Tufail Shaheed Road	4220647, 4220294	Tannery	1952	12753	18	Vegetable Tanned Leather	100 M.Tons
320	Harappa Textile Mills Ltd Harappa	4468295, 4468895	Textile Spinning	1977	275430	1122	Cotton Yarn	18480 Spindles, 96 Looms
321	Imtiaz Textile Mills Burewala Road Chichawatni	434435	Textile Spinning	1999	4000	193	Waste Yarn	200 Rotors
322	Lalazar Spinning Mills	0303-7520410, 220966	Textile Spinning	2000	14280	73	Cotton Yarn	1500 Rotors
323	Nargis Textile Mills 16 Km Lahore Road Qadarabad	4301454-5	Textile Spinning	2000	5262	135	Cotton Yarn	1672 Rotors
324	Shoab Salman Textiles Mills 187/9-L Multan Road	4553176	Textile Spinning	1992	40000	192	Cotton Yarn	1600 Rotors
325	Qazi Weaving Mills (Pvt) Ltd. 112-7R- Chichawatni Kamalia Road Chichawatni	485584	Textile Weaving	1994	8600	14	Grey Cloth	50 Looms
326	Lakson Tobacco Co Ltd. Gt Road Qadirabad	4225356	Tobacco	1981	273116	530	Cigarettes	13950 Million Nos.
327	Ammer Labs (Pvt) Ltd., 60-61/C, Sie	4270270	Unani Medicines	2003	1532985	26	Herbal Medicines	1526498 Nos.
328	Crescent Ghee Chichawatni	4610224, 610223	Vegetable Ghee And Cooking Oil	1957	65700	72	Vegetable Ghee And Cooking Oil	44000 M.Tons

Sr. No.	Name / Address of unit	Phone No. / Website	Industry	Estb. Year	Investment (Th.Rs.)	Emp	Product	Annual Installed Capacity
329	Hi-Tech Edible Oil Ltd., 17-Km Arifwala Road		Vegetable Ghee And Cooking Oil	1990	299278	73	Edible Oil	66000 M.Tons
330	Montgomery Flour And General Mills Ltd (Ghee Section) G.T. Road	74408-9	Vegetable Ghee And Cooking Oil	1994	10000	C	Vegetable Ghee/ Cooking Oil	20000 M.Tons
331	Muslim Ghee Mills Qadirabad		Vegetable Ghee And Cooking Oil	1988	10000	C	Vegetable Ghee/ Cooking Oil	20000 M.Tons
332	S. J. Industries (Vegetable Ghee & Cooking Oil/Soap Mills) Chichawatni	485223	Vegetable Ghee And Cooking Oil	1993	63000	38	Vegetable Ghee/ Cooking Oil	50000 M.Tons
333	Sahiwal Ghee Mills (Pvt) Ltd 96/6-R Kuchi Pakki Road	4554462	Vegetable Ghee And Cooking Oil	1992	17000	80	Vegetable Ghee/ Cooking Oil	24000 M.Tons
334	Ghulam Hussain & Co. Pakpattan Road		Woollen Textile Spinning /Weaving	1985	2200	14	Woollen Yarn	100 Spindles
335	Sultan Wool Industry Pakpattan Road	4305401	Woollen Textile Spinning /Weaving	1980	28000	8	Woollen Yarn	732 Spindles

Source: Directorate of Industries, Punjab



## LIST OF CONTACT NUMBERS

### *Directorate of Industries Punjab*

Director Industries, Punjab	Tel: +92 (42)-99211520-1 Fax: +92 (42)-99211522 dipunjab@gmail.com
Additional Director Industries	Tel: +92 (42)-99211531 +92 (42)-99212752 Fax: +92 (42)-99212753
Joint Director (Development)	Tel: +92 (42)-99211526
Senior Economist	Tel: +92 (42)-99211533
Staff Economist	Tel: +92 (42)-99211534
Deputy Director (Admin)	Tel: +92 (42)-99211528
Deputy Director (Development)	Tel: +92 (42)-99211528
Deputy Director (Planning)	Tel: +92 (42)-99211530
Assistant Director (Admin)	Tel: +92 (42)-99211529
Assistant Director (Planning)	Tel: +92 (42)-99211530
Assistant Director (Statistics)	Tel: +92 (42)-99211524
Assistant Registrar	Tel: +92 (42)-99211523
Librarian	Tel: +92 (42)-99213010
District Officer (E&IP), Sahiwal	Tel: +92 (40)-9200139

### *Other Relevant Departments*

Department	Contact
Secretary, Industries, Commerce & Investment Department, Govt. of the Punjab	Tel: +92 (42) 99210534-5 Fax: +92 (42) 99210536
Chamber of Commerce & Industry Sahiwal	Tel: +92 (40) 4221429 Fax: +92 (40) 4221039 scciswl@brain.net.pk
Punjab Board of Investment & Trade (PBIT)	Tel: +92 (42) 99205201 info@pbit.gop.pk
Small & Medium Enterprises Development Authority (SMEDA)	Tel: +92(42)-111-111-456 Fax: +92 (42) 36304926-7 info@smeda.org.pk

---

Punjab Industrial Estates Development and Management Company (PIEDMC)	Tel: +92 (42) 35297203-6 Fax: +92 (42) 35297207 info@pie.com.pk
Punjab Small Industries Corporation (PSIC)	Tel: +92 (42) 99200453

## BIBLIOGRAPHY

- Punjab Development Statistics 2011, Bureau of Statistics, Government of the Punjab
- The Urban Unit, Planning & Development Department, Government of the Punjab.
- Technical Education and Vocational Training Authority
- Chief Inspector of Boilers, Directorate of Industries, Punjab
- Directorate of Agriculture, Crop Reporting Service, Punjab
- Chief Conservator of Forest Planning, Monitoring and Evaluation, Punjab
- Directorate General (Ext), Livestock & Dairy Development Punjab
- Directorate General Mines & Minerals, Punjab
- Punjab Small Industries Corporation
- Punjab Industrial Estates Development and Management Company
- Faisalabad Industrial Estates Development and Management Company
- Industries, Commerce & Investment Department, Government of the Punjab
- District Officers (Enterprise & Investment Promotion) as well as District Administration
- Export Processing Zones Authority
- Board of Investment, Government of Pakistan
- Website of Stat Bank of Pakistan
- Ministry of Commerce, Govt. of Pakistan
- Directory of Industrial Establishments Punjab, Directorate of Industries, Punjab

