

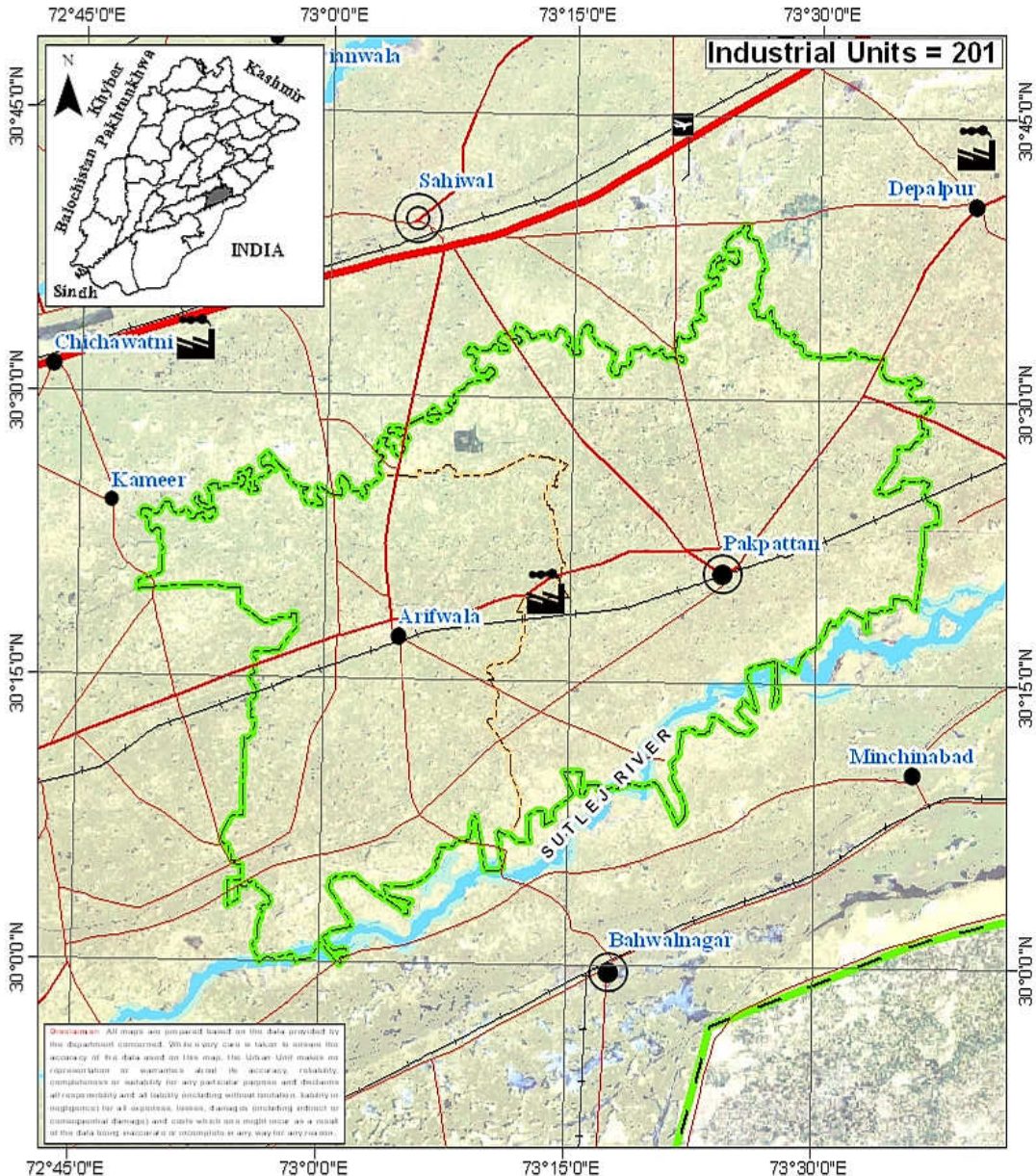
District Pre-Investment Study - 2012

Pakpattan



Directorate of Industries, Punjab
Poonch House, Multan Road, Lahore.

District Pakpattan



Map No.: PKP-01 Date: 21-01-2013

Scale: 1:1,000,000

0 12.5 25

Kilometers



THE URBAN UNIT

Urban Unit, Lahore & Islamabad



Director's Message

After spending past two years in Directorate of Industries, Punjab, I feel very privileged to be writing this message as Director Industries, Punjab.



This is the time we publish the 7th edition of the District Pre-Investment Studies of 36 Districts of Punjab, which has now become synonymous with our commitment to helping Industrialists, new entrepreneurs as well as Researchers. As Director Industries Punjab, I have seen much change, like:

- Relocation plan for the industrial units located within residential areas to industrial estates / positive areas declared by the District Governments.
- Adaptation of Boilers & Pressure Vessels Ordinance 2002.
- Conduct of Census of Manufacturing Industries.
- A scheme "Improvement and Up-gradation of Boilers Inspection Wing" has been approved by the Planning & Development Department, Government of the Punjab with the cost of Rs.10 Million.
- A Scheme "Sports Goods and Material Testing Laboratory" is under process in Planning & Development Department, Government of the Punjab. The estimated cost of the scheme is Rs.450 Million.
- The proposal for Capacity Building of Directorate of Industries Punjab is under process in Industries, Commerce & Investment Department, Government of the Punjab with the estimated cost of Rs.109.75 Million.
- We launch our website www.doi.pitb.gov.pk.

Looking ahead, we are focused on accelerating the execution of growth and promote industrial investment in the province. I am incredibly excited about this and truly believe the best of time for industrial investment is yet to come, Insha Allah.

(Muhammad Siddique Sheikh)
Director Industries, Punjab

Preface

Pre-investment studies for the districts in the Punjab were first published by the Directorate of Industries and Mineral Development, Punjab in the year 1979, with the prime objective of providing data which might interest private entrepreneurs and the framers of the Provincial and National Strategies in the industrial sector.

The second, third, fourth, fifth and sixth series of Pre-investment Studies for all districts of Punjab were published in 1983, 1992, 2002, 2006 and 2009 respectively. The present edition is seventh in the series.

This study basically updates the information contained in sixth series of district pre-investment studies. Efforts have been made to provide latest information collected through published sources, offices of the respective Government Departments/Agencies and District Offices of Industries Department. Quality addition of Industrial Policy Framework, recently promulgated Special Economic Zone Act 2012, Strategic Trade Policy Framework (2012-15) and Digital Maps by Urban Unit has improved these studies significantly.

The information has been updated in respect of population, manpower, production of agriculture crops, fruits, vegetables, livestock, forest resources, ores/minerals, infrastructural facilities such as technical/vocational training facilities, communication net-work, sub-soil water quality/effluent disposal

facilities, power/gas supply, tele-communication facilities, industrial estates, dry ports, industrial financing facilities, loaning scheme of PSIC, industrial policy, investment policy, fiscal incentives, Special Economic Zone Act 2012 and Strategic Trade Policy Framework (2012-15) etc. New policy measures regarding declaration of negative and specified positive areas have also been incorporated.

The study also includes information regarding existing industrial pattern, industry wise installed capacities and details regarding existing major industrial units in each district.

Effort has been made to identify various industries considering the availability of raw materials, skilled labour, linkage between industrial units and local/national/international demand. The suggested industries are, however, merely of indicative nature and it is advisable that prospective investors should conduct detailed feasibility report before making final decision for investment.

It is worthwhile to mention that industrial sector in Punjab has grown gradually from 6,223 industrial units in 1975 to 17,857 industrial undertakings in 2010. Sectoral growth has also been registered, resulting in substantial value addition. Value addition chain can be maximized by processing the agricultural industrial waste like rice husk, cotton stock, maize and corn cob. Herbal products is another untapped area. Live Stock, Dairy Development and poultry are fast growing sectors. Processing of food products can fetch handsome dividends. Currently information technology sector is growing by 39% annually in Pakistan. Fashion

industry is also developing rapidly. Similarly, chemical sector has lot to offer by utilizing the available mineral resources as raw material.

Issue of energy shortage can be addressed by dealing with power generation as an industry. Local as well as foreign investors have golden opportunity to set up power generation stations based on coal and other alternate fuels, under the captive power plants policy allowed in the newly promulgated SEZ Act, 2012. Punjab offers very good opportunity to the local as well as foreign investors to set up small, medium and heavy industries in variety of sectors. It has a growing market of over 90 million consumers, abundant manpower / labour force and cheap raw material with reasonably controlled law & order.

The Industries, Commerce & Investment Department has sufficient institutional frame work of attached and autonomous bodies to look after the industrial issues. Directorate of Industries, Small Industries Corporation (PSIC), Board of Investment (PBIT), Punjab Industrial Estates Development and Management Company (PIEDMC), Faisalabad Industrial Estates Development and Management Company (FIEDMC) have blend of professionals from the public as well as private sector. These legal entities are working in close coordination with the Chambers of Commerce and Industries systematically to promote industrialization and trade.

Development schemes regarding establishment of Industrial Resource Centre at the Directorate of Industries, setting up Sports & Material Testing Lab at EPZ, Sambrial and Industrial Safety Institute are under consideration with the Planning and Development

Department. Completion of these schemes will definitely help in promotion of industrialization process with enhanced industrial safety.

I must record my appreciation to Mr. Muhammad Akram Awan, Senior Economist, who effectively planned, coordinated and provided the guidance to his team members for completion of this study. Credit also goes to Mr. Muhammad Jamil Chishty, Staff Economist for his dedicated support rendered in the completion process of this study and Mr. Waseem Haider, Stenographer, for his tireless typing and composition work on computer.

I am grateful to all the District Officers, Enterprise & Investment Promotion who provided the relevant information of their respective districts for incorporating in pre-investment studies. I am also thankful to various Provincial Departments for supplying the required data to the Directorate of Industries. My special thanks are due to Dr. Nasir Javed, Project Director, Urban Unit for the provision of digital maps and the Punjab Printing Press.

Any suggestion for the improvement of the study will be welcomed.

Dec. 31, 2012

(Muhammad Siddique Sheikh)
Director Industries, Punjab

Contents

| Section | Page |
|---|----------|
| District at a Glance | 1 |
| 1. Geographical Conditions | 3 |
| 1.1 Brief Description of the District | 3 |
| 1.2 Climate and General Soil Conditions | 3 |
| 2. Man-Power | 5 |
| 2.1 Total Population of the District | 5 |
| 2.2 Man-Power Availability | 5 |
| 2.3 Traditional Crafts | 7 |
| 2.4 Geographical Indicators | 7 |
| 3. Natural Resources | 9 |
| 3.1 Agriculture | 9 |
| a) Main Crops | 9 |
| b) Main Fruits | 10 |
| c) Main Vegetables | 10 |
| 3.2 Forests | 11 |
| a) Location of Forests and Area under Afforestation | 11 |
| b) Production of Timber and Fire-wood | 11 |
| 3.3 Livestock Population | 12 |
| a) Animal Population | 12 |
| b) Poultry Population | 13 |
| c) Availability of Hides/Skins & Slaughter House Wastes | 13 |
| d) Production of Wool | 13 |
| 3.4 Ores and Minerals | 13 |

| | |
|--|-----------|
| 4. Infrastructural Facilities | 15 |
| 4.1 Communication Network | 15 |
| a) Road Links | 15 |
| b) Rail Links | 15 |
| 4.2 General Quality and Availability of Sub Soil Water | 15 |
| 4.3 Effluent Disposal Facilities | 16 |
| 4.4 Power Supply | 16 |
| 4.5 Natural Gas Availability | 16 |
| 4.6 Telecommunication Facilities | 16 |
| 4.7 Social Infrastructural Facilities | 16 |
| 4.8 Industrial Estates | 17 |
| 4.9 Dry Port | 17 |
| 4.10 Industrial Policy | 17 |
| 4.11 Declaration of Negative Areas | 22 |
| 4.12 Declaration of Positive Areas | 22 |
| 4.13 Incentives for Investors to set a unit in EPZs | 24 |
| 4.14 Pakistan's Investment Policy – Key Features | 26 |
| 4.15 Industrial Financing Facilities | 29 |
| 4.16 Salient Features of Loaning Scheme of PSIC | 32 |
| 4.17 Salient Features of the SEZ Bill 2012 | 33 |
| 4.18 Strategic Trade Policy Framework (2012-2015) | 35 |
| 5. Existing Pattern of Industrial Development | 41 |
| 5.1 Description of Existing Industry | 41 |
| 6. Future Industrial Potential | 43 |
| 6.1 Agriculture | 43 |
| 6.2 Livestock | 44 |
| 6.3 Industry | 44 |
| 6.4 Demand Based Industries | 45 |
| 6.5 List of Identified Projects | 45 |

| Annex | Page |
|---|-------------|
| Directory of Industrial Establishments | 47 |
| List of Contact Nos. | 67 |
| Bibliography | 69 |

DISTRICT AT A GLANCE

| | | | |
|----|--|---|--|
| 1 | Population (000 Numbers) | : | 1,641 |
| 2 | Area (Square Kilometres) | : | 2,724 |
| 3 | Population Density (per sq. km.) | : | 603 |
| 4 | Tehsils / Towns | : | Pakpattan and Arifwala. |
| 5 | Main Crops | : | Sugarcane, Wheat, Maize, Rice (cleaned) and Cotton. |
| 6 | Main Fruits | : | Citrus, Guava and Banana. |
| 7 | Main Vegetables | : | Potato, Cauliflower and Onion. |
| 8 | Forest Resources (Area in Acres) | : | NA |
| 9 | Mineral Resources | : | Nil |
| 10 | Total Metalled Roads (KM) | : | 1,755.87 |
| 11 | No. of Grid Stations | : | 06 |
| 12 | No. of Telephone Exchanges | : | 09 |
| 13 | Number of Industrial Units (Large Medium and Some Small Selected Sectors) | : | 201 |
| 14 | Type of Industrial Units | : | Agricultural Implements, Chip/Straw Board, Cold Storage, Cotton Ginning & Pressing, Dairy Products, Fertilizer, Flour Mills, Oil |

Extraction Plant. Poly
Propylene Bags, Poultry Feed,
Rice Mills, Seed Processing,
Soap & Detergents, Sugar and
Textile Weaving

CHAPTER - I

GEOGRAPHICAL CONDITIONS

1.1 BRIEF DESCRIPTION OF THE DISTRICT

District Pakpattan is bounded on the North - East by district Okara. On South - East by Bahawalnagar district separating the two districts by Satluj River. On the South - West by Vehari district and on the North - West by Sahiwal District.

District Pakpattan is spread over an area of 2,724 Square kilometres and it comprises two tehsils of:

- i) Pakpattan
- ii) Arifwala.

1.2 CLIMATE AND GENERAL SOIL CONDITIONS

The climate of Pakpattan district is extreme hot to the extent of 47°C in summer and cold in winter up to 2°C. Topographically, the district is homogeneous semi-arid plain. The river Sutlej flows from East to West on its Southern side.

The average annual rainfall in the district is about 175 mm.

CHAPTER - II

MAN POWER

2.1 TOTAL POPULATION OF THE DISTRICT

According to Punjab Development Statistics 2011, total population of Pakpattan district is 1,641 thousand persons out of which 853 thousand are males and 788 thousand are females. Density of population in the district is 603 persons per square kilometre.

Tehsil wise distribution of Urban and Rural population is given in Table-1

TABLE-1

Town-Wise Distribution of Urban & Rural Population

| Town | Population (Thousand Nos.) | | |
|--------------|----------------------------|-------------|-------------|
| | Urban | Rural | Total |
| Arifwala | 95 | 665 | 760 |
| Pakpattan | 139 | 742 | 881 |
| Total | 234 | 1407 | 1641 |

Source: Punjab Development Statistics, 2011

2.2 MAN POWER AVAILABILITY

As regards availability of skilled labour, there are 04 technical / commercial / vocational institutions for men imparting training in various trades e.g. mechanical, electrical, auto-engineering, welding,

wood working and commerce. Vocational institutions for women impart training in hand/machine embroidery, stitching and knitting. In all about 758 trained technicians/ artisans/ workers are turning out every year. The details are given in Table-2.

TABLE - 2**Commercial and Technical Institutions**

| Sr # | Name & Description of Commercial / Technical Training Institutions | Types of Training Courses Offered | Duration of Course | Average No of Students Enrolled / Session |
|-------------|---|---|---------------------------|--|
| 1 | Govt. Institute of Commerce, Chak No. 2 KB Hota Road, Pakpattan | D.Com, B. Com | 24 Months | 402 |
| 2 | Govt. Institute of Commerce, M. Block, Kalama Chowk, Arifwala | D.Com, | 24 Months | 186 |
| 3 | Govt. Technical Training Centre (DMTC), Ghalli Bassi Sharif Wali, Pakpattan | Welder, Turner, Wireman, Motor Cycle Mechanic | 6 Months | 103 |
| 4 | Govt. Technical Training Centre (DMTC), Qaboola Road, Opposite Arifwala Public School, Arifwala | Turner, Wireman | 6 Months | 67 |

Source: TEVTA

2.3 TRADITIONAL CRAFTS

The traditional crafts of the district include making of tinted cots and mats from naturally grown grass called 'Dhib'. The crafts are mainly concentrated in Pakpattan and its suburbs and are practiced by a number of families in the villages.

2.4 GEOGRAPHICAL INDICATIONS

The Project Director (Geographical Indications), Industries, Commerce & Investment Department, Government of the Punjab has identified that the "RCC Filter Pipe" is important Geographical Indication in the district.

CHAPTER - III

NATURAL RESOURCES

3.1 AGRICULTURE

a) Main Crops

Sugarcane, Wheat, Maize, Rice (cleaned) and Cotton are the main crops grown in the district. Production of these crops during the period 2008-09 to 2010-11 is given in Table - 3.

TABLE-3

**Production of Main Crops
(2008-09 to 2010-11)**

| Crop | Production (Th. M.Tons) | | |
|--------------------|-------------------------|---------|---------|
| | 2008-09 | 2009-10 | 2010-11 |
| Sugarcane | 232.91 | 201.93 | 229.92 |
| Wheat | 516.37 | 573.98 | 555.27 |
| Maize | 548.65 | 431.7 | 611.9 |
| Rice (cleaned) | 112.86 | 121.46 | 115.52 |
| Cotton (000 Bales) | 212.48 | 159.99 | 203.05 |

Source: Directorate of Agriculture, Crop Reporting Service, Punjab

Besides, Bajra, Moong, Mash, Masoor, Gram, Jawar, Oil Seed such as Rape / Mustard and Sun Flower are also grown in minor quantities in the district.

b) Main Fruits

Citrus, Guava and Banana are main fruits grown in the district. Production of these fruits during the period 2008-09 to 2010-11 is given in Table - 4

TABLE-4

**Production of Main Fruits
(2008-09 to 2010-11)**

| Fruit | Production (M.Tons) | | |
|--------|---------------------|---------|---------|
| | 2008-09 | 2009-10 | 2010-11 |
| Citrus | 8514 | 11639 | 10509 |
| Guava | 5378 | 5061 | 4199 |
| Banana | 268 | 183 | 80 |

Source: Directorate of Agriculture, Crop Reporting Service, Punjab

Besides, Mango is also grown in minor quantity in the district.

c) Main Vegetables

Potato, Cauliflower and Onion are main vegetables grown in the district. Production of these vegetables during the period 2008-09 to 2010-11 is given in Table - 5

TABLE-5

**Production of Main Vegetables
(2008-09 to 2010-11)**

| Vegetable | Production (M.Tons) | | |
|-------------|---------------------|---------|---------|
| | 2008-09 | 2009-10 | 2010-11 |
| Potato | 392601 | 436216 | 391073 |
| Cauliflower | 4471 | 4551 | 5020 |
| Onion | 5571 | 6807 | 13161 |

Source: Directorate of Agriculture, Crop Reporting Service, Punjab

Besides, Garlic, Bottle Gourd, Brinjal, Chillies, Turnip, Peas, Ladyfinger and Tomato are also grown in the district in minor quantities.

3.2 FORESTS

a) Location of Forests and Area under Afforestation

The area under forest is not available in the District. There is linear plantation of 819 Km alongside the roads/rails/canals in the district. Trees grown in the area are Kikar, Shisham and Mulberry, etc.

b) Production of Timber and Firewood

The production of Timber and Fire-Wood in the district during the period 2008-09 to 2010-11 is given in Table 6.

TABLE-6

**Production of Timber & Firewood
(2008-09 to 2010-11)**

| Year | Production (Cubic Meter) | |
|---------|--------------------------|----------|
| | Timber | Firewood |
| 2008-09 | 24795 | 9356 |
| 2009-10 | 9584 | 3498 |
| 2010-11 | 24379 | 9508 |

Source: Forestry, Wildlife and Fisheries Department

3.3 LIVESTOCK POPULATION

a) Animal Population

The animal population of the district is given in Table - 7.

TABLE - 7

ANIMAL POPULATION

| Animals | Population (Th Heads) |
|-----------|-----------------------|
| Buffaloes | 675 |
| Goats | 364 |
| Cattle | 232 |
| Sheep | 62 |

Source: Livestock & Dairy Development Department.

b) Poultry Population

As per Punjab Development Statistics 2011 there are 123 broiler and 201 layer poultry farms in the district Pakpattan having rearing capacity of 2,331 and 1,642 thousand birds respectively.

c) Availability of Hides / Skins and Slaughter House Wastes

As per Punjab Development Statistics 2011, 46200 animals were slaughtered in recognized / unrecognized slaughter houses in the district during the year 2009-10 which is a reasonable estimate of the availability of hides and skins in the district.

The availability of slaughter house by - products is estimated as under:-

| | |
|--------|--------------|
| Blood | 16.35 M.Tons |
| Bones | 78.90 M.Tons |
| Tallow | 14.74 M.Tons |

d) Production of Wool

The sheep population of 62 thousand heads in the district is expected to yield about 62 M.Tons of coarse wool annually.

3.4 ORES AND MINERALS

There is no major mineral in the district.

CHAPTER - IV

INFRASTRUCTURAL FACILITIES

4.1 COMMUNICATION NETWORK

a) Road Links

The district has a total metalled road-length of 1755.87 Kilometres. The District is linked with Okara, Sahiwal and Bahawalnagar districts through metalled road.

b) Rail Links

Pakpattan is the major Rail head in the district. The district is linked with Kasur and Vehari districts through railway net-work.

4.2 GENERAL QUALITY AND AVAILABILITY OF SUB-SOIL WATER

The underground water resources are adequate and the quality of sub soil water throughout the district is good and suitable for industrial purposes.

4.3 EFFLUENT DISPOSAL FACILITIES

There is no significant nullah in the district. However, river Sutlej passes through the district and it can be utilized for disposal of effluent after pre-treatment to remove harmful ingredients and with prior written permission from Irrigation and Power Department, Government of the Punjab.

4.4 POWER SUPPLY

There are 6 grid stations of 132 KV capacities in the district.

4.5 NATURAL GAS AVAILABILITY

At present natural gas is being supplied to the District. Almost 70% area is covered regarding supply of gas connection.

4.6 TELE-COMMUNICATION FACILITIES

There are 9 telephone exchanges operating in the district, ranging in capacities from 300 lines to 5000 lines. Cellular phone services are available in the district.

4.7 SOCIAL INFRA-STRUCTURAL FACILITIES

Social infra-structural facilities available in the district are given in Table - 8.

TABLE - 8**SOCIAL INFRA-STRUCTURAL FACILITIES**

| Tehsil | Primary / Middle / high / higher secondary School | College | Hospital | Police station | Railway stations | Post office | Banks |
|-----------|---|---------|----------|----------------|------------------|-------------|-------|
| Pakpattan | 436 | 2 | 3 | 7 | 3 | 7 | 26 |
| Arifwala | 435 | 2 | 2 | 5 | 4 | 6 | 22 |
| Total | 871 | 4 | 5 | 12 | 7 | 13 | 48 |

Source: Punjab Development Statistics 2011 / Respective District Offices.

4.8 INDUSTRIAL ESTATE

At present, there is no industrial estate in the district.

4.9 DRY PORT

There is no dry port in the district.

4.10 INDUSTRIAL POLICY

- Foreign investors are permitted to hold 100% of the equity of industrial projects without any permission of the Government.
- No prior Government sanction is required for establishment of an industry outside Ex-Municipal Territorial Limits of Town Committees / Municipal Corporation

irrespective of its cost and size except the following covered under schedule 'C':-

- a. Arms & Ammunition.
 - b. Security Printing Currency & Mint.
 - c. High Explosives.
 - d. Radio Active Substances.
 - e. Alcoholic Beverages or Liquors.
1. No industrial unit mentioned in Schedule-A of the notification No. AEA-III-4-3-9/91, dated 30.09.2002 or industrial unit exceeding a total cost of Rs. 100.00 million shall be set up within 10 miles (16 Kms) of international border:

List of Manufacturing Industries

- a) Basic Metal Industry.
- b) Petro-Chemical Industries (Excluding Products Industries).
- c) Large size Machine Tool Factories (Limit of Investment to be determined).
- d) Heavy Foundry Works.
- e) Heavy Electric Complexes.
- f) Heavy Mechanical Complexes.
- g) Electronics Industries.
- h) Major Vehicle Assembly Plants.
- i) Ordnance Factories.
- j) Explosives, Nitric acid and Sulphuric acid plants.
- k) Vehicular Tires and Tubes Industries.
- l) Locomotives and Railway Carriage manufacturing plants.

- m) Government Mint.
 - n) Security Printing Press involved in whole time printing of sensitive documents / currency notes.
 - o) Manufacture of optical glass and optics.
 - p) Nickle cadmium battery industries.
 - q) Nuclear / Separation Plants.
 - r) Large Power Generating Stations.
 - s) Large oil Storage units.
 - t) Oil refineries.
2. No industrial unit shall be set up in areas affected by flood flowing transversely in the strip of one mile of either side across the Grand Trunk Road from Shahdara Town to Muridke Town, without prior permission of the Provincial Government.
3. According to the notification No. AEA-III-3-5/2003 (Vol-III), dated 06.12.2006, “no new sugar mill shall be setup and no enlargement in capacity of the existing sugar mills is allowed in the Province”.
4. Each district Government may declare “negative area” for industry. Such “negative area” be determined by a District Committee after consultation with all stake-holders in light of general policy guidelines issued by the Industries, Commerce & Investment Department and exemptions allowed under Schedule ‘B’ of this Notification as under:

List of Service Industries

- a) Furniture (excluding Band Saw) and also excluding storing Timber / Wood.
- b) Tailoring/ Readymade garments.
- c) Laundry / Dry Cleaning.
- d) Bakery (excluding confectionery).
- e) Syrups (excluding squashes)
- f) Cosmetics.
- g) Service workshop.
- h) Cereal Products like vermicilles.
- i) Candles making.
- j) Printing and Packaging.
- k) Hand loom carpet weaving.
- l) Hotels.
- m) Bidi manufacturing.
- n) Handmade shoes / shoe repairing workshop.
- o) Spooling and thread balls.
- p) Small Hosiery units employing not more than 10 workers.
- q) Atta Chakkies.
- r) Installation of Chaff cutters.
- s) Cotton Grading.
- t) Other small industrial undertakings which do not fall under the Sixth schedule of the Punjab Local Government Ordinance, 2001.

“Other small industrial undertakings” would mean an industrial undertaking in which the total fixed assets (including the cost of land) do not exceed Rs.1.0 million (Rupees one million).

5. No industrial unit mentioned in Schedule 'C' of this Notification shall be set up anywhere in the Punjab without prior approval of the Government.
6. The Government reserves the right to refuse establishment / enhancement of any industrial undertaking which is in contravention of the public interest, ecology or any other law / rules for the time being in force.
7. The Government may relax any of the provisions of this notification in case of a particular unit or industry or class of units or industries.
8. NOC from Environment Protection Department, Govt. of the Punjab is required for setting up new Industries.
 - Tourism has been given the status of industry in accordance with Ministry of Industries & Production Circular No. 1-129/99-INV-IV dated 2nd August 1999.
 - The Housing and Construction Sector has also been declared as industry (Finance Division Notification No. 10(10)/IF-11/98, dated 07.04.1999 and 04.06.1999.

- In accordance with Government notification No. 3(2)/97-INV-IV dated 05.05.1997, Computer Software and Information Technology (IT) have been declared as Industry.

4.11 DECLARATION OF NEGATIVE AREAS

In pursuance of the Clause 4 of the Location Policy notified on 30-09-2002, by the Industries, Commerce & Investment Department, Government of the Punjab, the District Govt. Pakpattan has declared the following negative areas:-

- a) All Ex-Municipal/Town Committee Limits
- b) A periphery of 50 meters around a residential locality,
- c) Area along the National Highways and other roads as per Highways Rules.

A residential Locality in this context would mean a declared/notified Dehi Abadi, a Qasba, Town Committee or a cluster of houses which has assumed the shape of a regular residential locality. A duly notified residential colony/area though not yet developed shall be deemed to be a residential locality.

4.12 DECLARATION OF SPECIFIED POSITIVE AREAS

Vide the Finance Act, 2008, the Government of Pakistan has enacted a new section “23A” in the Income Tax Ordinance 2001. The Section “23A” is reproduced below:-

“First year allowance.- (1) Plant, Machinery and equipment installed by any industrial undertaking setup in specified rural and under developed areas, and owned and managed by a company shall be allowed first year allowance in lieu of initial allowance under Section 23 at the rate specified in Part II of the third schedule against the cost of the “eligible depreciable assets” put to use after July 1st, 2008.

(2) The provision of Section 23 except sub-sections (1) and (2), thereof, shall mutatis mutandis apply.

The Federal Government may notify “Specified areas” for the purpose of sub-section(1)”

According to the District Government, Pakpattan there is no suitable state land available in the district, for the purpose.

4.13 INCENTIVES FOR INVESTORS TO SETUP A UNIT IN EPZs

- a) According to EPZs Authorities, following incentives are available in the Export Processing Zones
1. 100% ownership rights.
 2. 100% repatriation of capital & profits.
 3. No minimum or maximum limit for investment.
 4. Duty free imports of machinery, equipment & material.
 5. No sales tax on input goods including electricity & gas bills.
 6. Obsolete/old machinery can be sold in domestic market of Pakistan after payment of applicable duties & taxes.
 7. Freedom from National import restrictions.
 8. Foreign Exchange control regulation of Pakistan not applicable.
 9. Defective goods/waste can be sold in domestic market after payment of applicable duties, maximum upto 3% of total value of export.
 10. Duty free vehicle allowed under certain conditions. After 5 years of use, vehicles can be disposed off in domestic market on payment of duty on depreciated value.

11. Domestic market of Pakistan available on same conditions as for imports from other countries.
 12. Units operating in EPZs can undertake sub-contracting for units of tariff area subject to payment of duty and taxes on value addition only.
 13. Only EPZA is authorized to collect Presumptive tax at the time of export of goods which would be final tax liability.
 14. EPZ units allowed to supply goods to Custom manufacturing bonds.
 15. Production oriented labour laws to be solely regulated by the Authority.
 16. EPZ manufacturer will be treated at par with bonded manufacturers in tariff area for any future incentives to be announced for exporters.
 17. Relief from double taxation subject to bilateral agreement.
- b) Facilities to Investors for setting up a unit in EPZs of Pakistan.
1. One window service and simplified procedure.
 2. All infrastructural facilities like water, electricity, gas, telex, fax and telecommunication system are made available by EPZA.
 3. Skilled & un-skilled labour available in abundance.

4. Sub-contracting without limit on variety and quantity is allowed outside the zone as well as within the zone.
5. The garment manufacturing units located in Export Processing Zones are eligible to participate in auction of quotas.
6. GSP concessions given by various countries to imports from Pakistan are available to the manufacturers in the zone.
7. Peaceful, secure and environmentally protected / pollution free work area.
8. Inter-unit transfer of finished goods among exporting units allowed.

4.14 PAKISTAN'S INVESTMENT POLICY - KEY FEATURES

General

- The investment policy is liberal and business friendly as it has been designed in consultation with businessmen, investors and representative forums as well as the Multinational Companies (MNCs).
- It provides equal investment opportunities for both domestic and foreign investors.
- All economic sectors open for FDI (Foreign Direct Investment).
- 100% foreign equity allowed.
- No government sanction required.
- Foreign investment on repatriable basis is allowed in all economic sector including

manufacturing, agriculture, services, infrastructure and social sectors.

- Foreign investment in Agriculture projects allowed on joint-venture basis by associating minimum local equity of 40%.
- Remittance of Royalty, Technical & Franchise Fee, Capital, Profits, Dividends allowed.
- Minimum foreign equity for non-manufacturing including services sector has been reduced from \$ 0.3 to \$ 0.15 million. In Agriculture, infrastructure and social sectors, it is \$ 0.3 million.

Tariff and Tax Incentives

- To keep Pakistan competitive in international tariff 5% customs duty has been allowed on import of plant and machinery which is not manufactured locally.
- Sales tax 0% across the board.
- 0% duty on import of raw material for export industry.
- 0% duty on import of agriculture machinery.
- Tax relief in shape of Initial Depreciation Allowance (IDA) has been provided as 50% of machinery cost across the board.
- Tax relief has also been provided for expansion and Balancing, Modernization & Replacement (BMR) in existing industries.

Policy Package of Pakistan

| Policy Parameters | Mfg. Sector | Non-Manufacturing Sectors | | |
|---|--|---|-------------------------|--|
| | | Agriculture | Infrastructure & Social | Services including IT & Telecom Services |
| Govt. Permission | Not required except for specified industries* | Not required except specific licences from concerned agencies. | | |
| Remittance of capital, profits, dividends, etc. | Allowed | Allowed | | |
| Upper Limit of foreign equity allowed | 100% | 100% | 100% | 100% |
| Minimum Investment Amount (M \$) | No | 0.3 | 0.3 | 0.15 |
| Customs duty on import of PME** | 5% | 0% | 5% | 0-5% |
| Tax relief (IDA***, % of PME cost) | 50% | 50% | | |
| Royalty & Technical Fee | No restriction for payment of royalty & technical fee. | Initial lump-sum up to \$100,000 Max Rate 5% of net sales - Initial period 5 years | | |

* Specified Industries:

- i) Arms and ammunitions
- ii) High Explosives

- iii) Radioactive substances
- iv) Security Printing
- v) Currency and mint

** PME = Plant, Machinery and Equipment

*** IDA = Initial Depreciation Allowance

4.15 INDUSTRIAL FINANCING FACILITIES

Following Financial Institutions in the country are providing various types of fixed investment industrial financing in the foreign and local currency to the industrial sector for establishment of new industrial units as well as for Expansion, Balancing, Modernization and Replacement (BMR) of existing industrial units within the frame-work of industrial/financial policies of the Government of Pakistan.

- 1 AlBaraka Bank (Pakistan) Limited.
- 2 Allied Bank Limited.
- 3 Askari Bank Limited.
- 4 Bank Alfalah Limited.
- 5 Bank Al-Habib Limited.
- 6 Bank Islami Pakistan Limited.
- 7 Barclays Bank PLC.
- 8 Burj Bank Limited.
- 9 Citi Bank N.A.
- 10 Deutsche Bank A.G.

- 11 Dubai Islamic Bank Pakistan Limited.
- 12 Faysal Bank Limited.
- 13 First Women Bank Limited.
- 14 Habib Bank Limited.
- 15 Habib Metropolitan Bank Limited.
- 16 HSBC Bank Middle East Limited.
- 17 Industrial and Commercial Bank of China
- 18 Industrial Development Bank of Pakistan.
- 19 JS Bank Limited.
- 20 KASB Bank Limited.
- 21 MCB Bank Limited.
- 22 Meezan Bank Limited.
- 23 National Bank of Pakistan.
- 24 NIB Bank Limited.
- 25 Oman International Bank S.A.O.G.
- 26 S.M.E. Bank Limited.
- 27 Samba Bank Limited
- 28 Silk Bank Limited.
- 29 Sindh Bank Limited.
- 30 Soneri Bank Limited.
- 31 Standard Chartered Bank (Pakistan)
Limited.
- 32 Summit Bank Limited
- 33 The Bank of Khyber
- 34 The Bank of Punjab
- 35 The Bank of Tokyo-Mitsubishi Limited.

- 36 The Punjab Provincial Cooperative Bank Limited.
- 37 United Bank Limited.
- 38 Zarai Taraqiati Bank Limited.

Source: State Bank of Pakistan

List of Development Financial Institutions (DFIs)

- 1 Bankers Equity Limited.
- 2 House Building Finance Company Limited.
- 3 Pak Brunei Investment Company Limited
- 4 Pak-China Investment Company Limited.
- 5 Pak Oman Investment Company Limited.
- 6 PAIR Investment Company Limited.
- 7 Pakistan Kuwait Investment Company Limited.
- 8 Pak-Libya Holding Company Limited.
- 9 Saudi Pak Industrial & Agricultural Investment Company Limited.

Source: State Bank of Pakistan

Besides the financial institutions mentioned above a number of Leasing Companies, Modaraba Companies, Investment Banks are also providing financing facilities to the industrial sector. Punjab Small Industries Corporation also extends financial assistance to the small/cottage industrial units.

4.16 SALIENT FEATURES OF LOANING SCHEME OF PSIC

Punjab Small Industries Corporation (PSIC) is a body corporate enacted in 1973. One of core functions of PSIC is financial assistance programme for prospective entrepreneurs, skilled youth, artisans and craftsmen all over the Punjab. The priority sectors are as under:

- Service Industries.
- Agro / Agro Support Industries.
- Food Processing Industries.
- Export Oriented Industries.
- Import Substitution Industries.
- Information Technology (IT) Project.
- Handicraft Industry.
- Women Enterprises.

PSIC started credit assistance programme during 1984 and completed 13 schemes up till now. An amount of Rs. 4079 Million has been disbursed to 19,580 entrepreneurs in 36 Districts of Punjab with the recovery rate of 88% that indicates proper utilization of loans.

The maximum loan limit is Rs.3 Million with debit equity ratio of 60:40. The credit assistance facility available for new projects, BMR and Working Capital. The markup rate varies from 0% to 12%.

The repayment period of loan is from 3 years to 6 years with grace period of 3 months to 6 months.

Recently, Government of Punjab has provided an amount of Rs. 2000 Million for disbursement through Service Provider Organization i.e. M/s Akhuwat to un-employed and skilled persons of PVTC, TEVTA, SANATZAR's of Social Welfare Department or other unemployed youth having good business plan.

Up till now, M/s Akhuwat has disbursed an amount of Rs. 1650.00 Million to 94,960 poor household in 33 vocations with average loan size of Rs. 17,382 in Punjab through its 142 offices in 30 districts of the Punjab.

To promote the traditional handicrafts in Punjab, PSIC has also launched dedicated credit assistance schemes for the craftsmen at subsidized markup rates. These craftsmen have also been provided marketing facilities through Pakistan Handicrafts Shops.

4.17 SALIENT FEATURES OF THE SEZ BILL 2012

The Law of SEZ has been made to meet the global challenges of competitiveness to attract FDI. The Law/bill will allow to create industrial clusters with liberal incentives, infrastructure, investor facilitation services to enhance productivity and reduce cost of doing business for economic

development and poverty reduction. The Law further envisages to reduce processes through SEZ in Pakistan. The establishment of SEZs will attract both domestic as well as international investors. The SEZ would play a pivotal role in the economic development of Pakistan as has been witnessed in case of China, Malaysia, Thailand and other states.

It extends to the whole of Pakistan and overrides other laws (anything contrary);

- All SEZ whether Public, Public-Private or Private-Private to be governed under this Act;
- The Board of Approval (BOA) headed by the Prime Minister of Pakistan with the Minister for Finance as the Vice Chairman shall meet as frequently as required but not less than twice a year and decisions shall be taken by a majority of the total membership present and voting;
- SEZs will have exemption from customs duties & taxes for all Capital Goods imported into Pakistan for the development , operations and maintenance of a SEZ;
- Exemption from all taxes on income accruable in relation to the development and operations of the SEZ for a period of ten years, starting from the date of signing of the Development Agreement.
- Zone Enterprises have exemption from custom duties etc. on imports of Capital Goods;

- Exemption from taxes on income for a period of 10 years starting from the date the Development certifies that the Zone Enterprise has commenced commercial operations in the relevant SEZ;

There is no limit to the economic potential of Pakistan. The challenge is to create the enabling environment in which this can be realized. Special Economic zones bill is a step towards the economic stability in the country.

4.18 STRATEGIC TRADE POLICY FRAME WORK (2012-2015)

The government unveiled on 29 January, 2013 a medium term (2012-2015) Strategic Trade Policy Framework, setting a cumulative export target of \$95 billion for three years. The framework, the second announced by the federal government will be implemented with a funding of Rs. 26.14 billion. In the first year, Rs.5 billion will be spent on providing subsidies and support to identified sectors.

The focus of the policy is on promoting regional trade and regulatory efficiency, promoting agro-processed exports, increasing exports from less developed regions, revamping export promotion agencies, increasing green exports, enhancing role of women in exports and pursuing product and market development and diversification.

The salient features of the policy include institutional interventions, export development initiatives and regulatory amendments. The policy, offers cash assistance to 14 sectors along with 19 regulatory frameworks, including ban on products as a protective measure against environmental and health hazards. The new framework is designed to provide assistance only to the non-textile sectors.

Institutional Measures: The government will setup institutions like an Export-Import (Exim) Bank, Pakistan Land Port Authority; Leather Export Promotion Council and a Services Trade Development Council.

Export Development: Major initiatives in the Policy included allowing mark-up rate support of two per cent on prevailing LTFF for future import and purchase of machinery. An allocation of Rs.500 million has been proposed for schemes to be implemented this year. The total amount to be spent in three years is projected at Rs.3 billion. A mark-up support of 1.5% will be provided on export finance scheme (EFS) to selected sectors at a cost of Rs. 1.25 billion, including Rs. 200 million in 2012-2013.

The sectors for EFS support are fish and fish preparations, fruit and vegetables, spices, meat and meat preparations, carpets and rugs, sports

goods, footwear, leather products, surgical goods, cutlery, onyx products, pharmaceuticals, electric fans, transport equipment, electrical machinery, specialized machinery, furniture, handicrafts and computer-related services.

An amount of Rs.14 billion will be given as adhoc relief at three per cent of FoB to offset the impact of higher cost of utilities for exporters in selected sectors. The measure will cost Rs.3bn this year. An amount of Rs.2 billion-Rs125 million will be allocated for marketing development assistance for regional countries.

A Rs. 25 million allocation has been proposed for export promotion campaigns for agro-processed products; Rs. 400 million for encouraging opening of retail outlets; and Rs.400m for subsidizing 50% cost of plant and machinery for establishing processing plants for meat, fruits, vegetables, dates and olives in Azad Jammu and Kashmir, Baluchistan, Gilgit - Baltistan and Khyber Pakhtunkhwa.

An amount of Rs.30 million will be allocated for upgrading rice inspection laboratories, Rs. 20 million for subsidy at 100% of the prevailing mark-up rate for establishing mining and processing units in Khyber Pakhtunkhwa and Baluchistan.

Another Rs.20 million has been allocated for strengthening women's chamber of commerce and

industry, Rs.32 million for setting up a resource management cell at the ministry of commerce, Rs.28 million for establishing leather export promotion council and Rs.70 million for services export development council.

Regulatory Measures

Unrestricted import of used motorized wheelchairs and five-year-old used or second-hand ambulances has been allowed. Two per cent of export proceeds will be allowed to manufacturers-cum-exporters for duty-free import of accessories for value-addition for leather garments and made-ups. Import of non-hazardous plastic scrap has been allowed for industrial consumers for use as raw material. A ban has been imposed on import of plastic waste, hospital waste, used sewerage pipes and chemical containers.

Import of non-sterilized surgical needles and syringes will be restricted to industrial units, condition of Euro-II may be made applicable on import of all types of specialized vehicles, such as crane-mounted lorries, dump trucks and mixtures lorries. The import of used sprinkle lorries will be restricted to a maximum of five year old. All goods from banned list imported in commercial quality shall be allowed to re-export at importer/shipping lines cost. The imported substandard goods from the restricted list should be destroyed within a period of six months without offering any release.

Import of waste and scrape of tyres in completely shredded/ cut form will only be allowed to industrial consumers; domestic standards will equally apply to imported goods as well.

Construction engineering and electrical companies will be allowed to retain abroad the exported machinery to carry out work on export-cum-import basis with the condition that they will import the same on the conclusion of the contract against indemnity bond.

All exporters of edible products are to be registered and export of vegetable ghee and cooking oil will be allowed in packaging of up to 25kg to encourage value-addition.

Steps to contain Environmental & Health Hazards

- Ban on import of plastic waste/scrap-hospital waste, used sewerage pipes and chemical containers.
- Restricting import of non-sterilized surgical needles and syringes to industrial units.
- Only the more fuel efficient Euro-II category crane-mounted lorries, dump trucks, mixture lorries, etc, will be imported.
- Imported used tyres will only be allowed for industrial use.

Institutions to be Setup

- Export-Import Bank.
- Pakistan Land Port Authority.
- Leather Export Promotion Council.
- Service Trade Development Council.

CHAPTER - V

EXISTING PATTERN OF INDUSTRIAL DEVELOPMENT

5.1 DESCRIPTION OF EXISTING INDUSTRIES

There are about 201 large, medium and some small industrial units in the district. Industry-wise installed capacity of major industrial units is given in Table-9.

TABLE-9

Industry-wise Installed Capacity

| Sr. # | Industry | No. of units | Annual Installed Capacity |
|-------|---------------------------|--------------|-----------------------------|
| 1 | Agricultural Implements | 1 | 2000 Nos. |
| 2 | Chip/Straw Board | 8 | 10700 Th. Sq.Ft. |
| 3 | Cold Storage | 46 | 1910 Th. Bags |
| 4 | Cotton Ginning & Pressing | 36 | 166 Sawgins, 36 Press |
| 5 | Dairy Products | 1 | 14400 Th. Litres |
| 6 | Fertilizer | 1 | 7200 M.Tons |
| 7 | Flour Mills | 5 | 340 M.Tons/ Day |
| 8 | Poly Propylene Bags | 1 | 115 M.Tons |
| 9 | Poultry Feed | 4 | 61500 M.Tons |
| 10 | Rice Mills | 77 | 166 Hullers, 22 Shellers |
| 11 | Seed Processing | 10 | 213.5 M.Ton |
| 12 | Soap & Detergents | 8 | 1625 M.Tons |
| 13 | Sugar | 1 | 5500 TCD |
| 14 | Textile Weaving | 1 | 64 Looms |

Source: District Officer (E&IP), Pakpattan.

Note: For further details visit: www.doi.pitb.gov.pk

CHAPTER - VI

FUTURE INDUSTRIAL POTENTIAL

Keeping in view the availability of raw material, skilled labour, linkage between the industrial units, local/national/international demand, future industrial potential of district Pakpattan is discussed hereunder:

It would, however, be kept in mind that though the above mentioned factors facilitate the success of any industrial unit, yet the entire success depends upon the investors / entrepreneurs and the capabilities of the personnel having the managerial control because any of these factors, if lacking is manageable. Therefore, it is advisable that detailed feasibility of industrial projects must be carried out before making final decision for investment.

6.1 AGRICULTURE

Main crops of the district are wheat, sugarcane maize, rice and cotton. The annual average production of wheat, sugarcane maize and rice during the period 2008-11 was about 548.54, 221.58, 530.75 and 116.61 thousand M.Tons and of cotton was 191.84 thousand bales.

There are already one sugar mills, 5 flour mills, 77 rice mills and 36 cotton ginning/pressing factories operating in the district.

The production of sugarcane does not reflect any potential for another sugar mills but there exists good prospects for textile spinning, weaving, processing and solvent oil extraction.

6.2 LIVESTOCK

According to Live Stock and Dairy Development Punjab, the population of cattle, buffaloes, sheep and goats was 232, 675, 62 and 364 thousand heads.

Pakpattan is mainly agrarian district. It is traditionally milk producing area. The district possesses very good prospects for establishment of milk processing units and dairy farms.

6.3 INDUSTRY

Sugar mills is the only major industrial unit in the district. Its crushing capacity is 5,500 M.Tons per day.

By making arrangements with the sugar mills, there exists good scope for paper and board mill based on bagasse. Liquid Sugar and industrial alcohol unit based on molasses. A polypropylene

woven bags unit is already operating to meet the sugar packing requirement of the sugar mill.

6.4 DEMAND BASED INDUSTRIES

In view of small size and agrarian nature of the district there exists good scope for agricultural implements, cold storage, poultry farms, vermicellies, bakery, laundry soap, steel doors and windows, tube well strainers (filters), RCC pipes/girders/slabs, etc.

6.5 LIST OF IDENTIFIED PROJECTS

As per discussion given in sections 6.1 to 6.4, the following units have been identified for investment. It is, however, advised that detailed feasibility must be carried out before making final decision for investment:

- Agriculture waste, by products raw material based industries for maximization of value addition chain
- Agricultural Implements
- Bakery
- Dairy Farms
- Energy conservation / efficiency
- Industrial Alcohol
- Liquid Sugar
- Laundry Soap
- Milk Processing
- Paper and Board

- Power generation through coal and other alternate fuels
- Power generation through bagasse
- RCC Pipes/Girders/Slabs
- Solvent Oil Extraction
- Steel Doors and Windows
- Textile Spinning/Weaving
- Tube well Strainers (Filters)
- Vermicellies
- Waste heat recovery system

Directory of Industrial Establishments, Pakpattan

| Sr. No. | Name / Address of unit | Phone No. / Website | Industry | Estb. Year | Investment (Th.Rs.) | Emp | Product | Annual Installed Capacity |
|---------|---|---------------------|-------------------------|------------|---------------------|-----|-------------------------|---------------------------|
| 1 | Punjab Zari Industries Arifwala | | Agricultural Implements | 1979 | 600 | 8 | Agricultural Implements | 2000 Nos. |
| 2 | Abdullah Straw Board Factory 15/Sp, Pakpatton Sharif | | Chip / Straw Board | 1991 | 800 | C | Straw Board | 1500000 Sq.Ft. |
| 3 | Ahmad Straw Board Factory Chak 15/Sp | | Chip / Straw Board | 1992 | 800 | C | Straw Board | 1500000 Sq. Ft. |
| 4 | Al-Fareed Straw Boards Chak Rakh | | Chip / Straw Board | 1993 | 800 | 8 | Straw Board | 1500000 Sq. Ft. |
| 5 | Chaudhry & Co. Gatta Factory Chak Rakh | | Chip / Straw Board | 1993 | 800 | 8 | Straw Board | 2000000 Sq. Ft. |
| 6 | Nasir Gatta Factory Chak 15/Sp | | Chip / Straw Board | 1992 | 400 | 8 | Straw Board | 1500000 Sq. Ft. |
| 7 | Panjtan Gatta Factory Near Shamlat Bridge | | Chip / Straw Board | 1992 | 800 | 6 | Straw Board | 1500000 Sq. Ft. |
| 8 | Rana Brohers Gatta Factory Chak 26/Sp | | Chip / Straw Board | 1990 | 800 | 9 | Straw Board | 1500000 Sq. Ft. |
| 9 | Salim Kot Straw Board Factory Saleem Kot, Kameer Road | | Chip / Straw Board | 1993 | 400 | 8 | Straw Board | 1200000 Sq.Ft. |
| 10 | Aamir Shahzad Cold Storage Depalpur Road, Bridge Rakh | 371415 | Cold Storage | 1991 | 5849 | 6 | Vegetable/ Fruits | 20000 Bags |
| 11 | Al-Farid Cold Storage Depalpur Road | 831049-401870 | Cold Storage | 1984 | 5000 | 5 | Vegetable/ Fruits | 12000 Bags |

| Sr. No. | Name / Address of unit | Phone No. / Website | Industry | Estb. Year | Investment (Th.Rs.) | Emp | Product | Annual Installed Capacity |
|---------|--|----------------------------|--------------|------------|---------------------|-----|-------------------|---------------------------|
| 12 | Allah Abad Cold Storage, 7-Km Qaboola Road, Arifwala | 0300-6949154 | Cold Storage | 2008 | 12000 | 6 | Vegetable/ Fruits | 50000 Bags |
| 13 | Allahabad Cold Storage Sahiwal Road Arifwala | 831049, 833454 | Cold Storage | 2004 | 2000 | 8 | Vegetable/ Fruits | 15000 Bags |
| 14 | Al-Madina Cold Storage Katchery Road | 376260 | Cold Storage | 1995 | 9000 | 6 | Vegetable/ Fruits | 12000 Bags |
| 15 | Al-Rashid Cold Storage, Pakpattan Road, Arifwala | 0321-5000312 | Cold Storage | 2008 | 20000 | 6 | Vegetable/ Fruits | 40000 Bags |
| 16 | Alsufi Cold Storage, 5Km Burewala Road Arifwala | 0457-832459, 03017273889 | Cold Storage | 2010 | 14000 | 4 | Vegetable/ Fruits | 20000Bags |
| 17 | Alyas Saleem Cold Storage, 4 Km Qaboola Road, Arifwala | 0300-8502435, 0300-6949065 | Cold Storage | 2008 | 12000 | 6 | Vegetable/ Fruits | 50000 Bags |
| 18 | Al-Yousaf Cold Storage, Kot Dewan | 0300-6942988 | Cold Storage | 2008 | 10000 | 5 | Vegetable/ Fruits | 15000 Bags |
| 19 | Alyousaf Cold Storage, Hota Road | | Cold Storage | 2009 | 7000 | 5 | Vegetable/ Fruits | 15000Bags |
| 20 | Baba Farid Cold Storage Pull Rakh | 372129 | Cold Storage | 2004 | 7000 | 5 | Vegetable/ Fruits | 50000 Bags |
| 21 | Bodla Cold Storage Bodla Farm Sahiwal Road | 372306 371977 | Cold Storage | 1996 | 7000 | 9 | Vegetable/ Fruits | 18000 Bags |
| 22 | Choudhary Cold Storage Near Stop 84/D sahiwal Road | | Cold Storage | 2008 | 8000 | 7 | Vegetable/ Fruits | 20000Bags |

| Sr. No. | Name / Address of unit | Phone No. / Website | Industry | Estb. Year | Investment (Th.Rs.) | Emp | Product | Annual Installed Capacity |
|---------|---|---------------------|--------------|------------|---------------------|-----|----------------------|---------------------------|
| 23 | Fazal Cold Storage Abdullah Pur Near Bunga Hayat | | Cold Storage | 1994 | 4000 | 5 | Vegetable/ Fruits | 4000 Bags |
| 24 | Habib Cold Storage, 3-Km Pakpattan Road Arifwala | 834457 | Cold Storage | 2000 | 8000 | 16 | Vegetable/ Fruits | 15000 Bags |
| 25 | Haji Umar Draz Cold Storage, Sahiwal Road, Noor Pur | 0300- 9691307 | Cold Storage | 2000 | 12000 | 12 | Vegetable/ Fruits | 50000 Bags |
| 26 | Haryana Cold Storage 1 Km., Burewala Road, Arifwala | 31176 | Cold Storage | 2002 | 10000 | 13 | Vegetable/ Fruits | 20000 Bags |
| 27 | Hayder Abbas Cold Storage Chak 67/D Rakkian | 35393 | Cold Storage | 1992 | 4000 | 5 | Vegetable/ Fruits | 6000 Bags |
| 28 | Iqbal Cold Storage, Adda Haripur Sahiwal Road | 4464782 | Cold Storage | 1987 | 5000 | 8 | Vegetable/ Fruits | 10000 Bags |
| 29 | Ittefaq Cold Storage | 372178 | Cold Storage | 2003 | 10000 | 13 | Vegetable/ Fruits | 40000 Bags |
| 30 | Ittefaq Cold Storage 6 Km., Qaboola Road 75 Eb Arifwala | 833375 | Cold Storage | 1997 | 10000 | 5 | Vegetable/ Fruits | 50000 Bags |
| 31 | Jahangir Cold Storage 1 Km Burewala Rd | 834634 | Cold Storage | 2002 | 10000 | 13 | Vegetable/ Fruits | 20000 Bags |
| 32 | Jahangir Cold Storage Burewala Road Arifwala | | Cold Storage | 1998 | 8600 | 6 | Vegetable/ Fruits | 24000 Bags |
| 33 | Jahangir Cold Storage Bye Pass Road Qaboola Near Chowk Fateh | 852452 | Cold Storage | 2003 | 9000 | 6 | Vegetable/ Fruits | 50000 Bags |

| Sr. No. | Name / Address of unit | Phone No. / Website | Industry | Estb. Year | Investment (Th.Rs.) | Emp | Product | Annual Installed Capacity |
|---------|---|---------------------|--------------|------------|---------------------|-----|-------------------|---------------------------|
| 34 | Jahangir Cold Store Sahiwal Road | 373981 | Cold Storage | 2004 | 10000 | 5 | Vegetable/ Fruits | 80000 Bags |
| 35 | Jewan Cold Storage Arifwala Road Arifwala | 377214 | Cold Storage | 2002 | 10000 | 17 | Vegetable/ Fruits | 30000 Bags |
| 36 | Lucky Cold Storage Depalpur Road Bonga Hayat | 520175 | Cold Storage | 1996 | 10000 | 6 | Vegetable/ Fruits | 17000 Bags |
| 37 | Lucky Cold Storage Kashmir Chowk Arifwala | 32724 | Cold Storage | 1990 | 20000 | 10 | Vegetable/ Fruits | 40000 Bags |
| 38 | M/S Siddique Cold Storage Near Fruit Vegetable Market Depalpur Road Pakpattan | | Cold Storage | 2008 | 9000 | 8 | Vegetable/ Fruits | 20000 Bags |
| 39 | Madina Cold Storage 18 Km., Bahawalnagar Road Qabula Arifwala Road | 852390 | Cold Storage | 2000 | 9000 | 5 | Vegetable/ Fruits | 27000 Bags |
| 40 | Mashallah Cold Storage 17Wali Pulli Pakpattan Road Arifwala | 834613 | Cold Storage | 2004 | 6000 | 5 | Vegetable/ Fruits | 15000 Bags |
| 41 | Muhammad Ka Cold Storage Hota Road | 0300-8188700 | Cold Storage | 2004 | 8000 | 5 | Vegetable/ Fruits | 50000 Bags |
| 42 | Muzammal Cold Storage 17 Sp Deparipur Road | 403024-352663 | Cold Storage | 1999 | 10000 | 12 | Vegetable/ Fruits | 60000 Bags |

| Sr. No. | Name / Address of unit | Phone No. / Website | Industry | Estb. Year | Investment (Th.Rs.) | Emp | Product | Annual Installed Capacity |
|---------|---|---------------------|--------------|------------|---------------------|-----|-------------------|---------------------------|
| 43 | Noor-E-Ka Cold Storage Sahiwal Road | | Cold Storage | 2009 | 10000 | 8 | Vegetable/ Fruits | 24000Bags |
| 44 | Noor-E-Ka Cold Storage, Sahiwal Road | | Cold Storage | 2008 | 10000 | 5 | Vegetable/ Fruits | 24000 Bags |
| 45 | Punjab Cold Storage 3 Km., Arifwala Borewala Road | 831467 | Cold Storage | 2002 | 8000 | 5 | Vegetable/ Fruits | 25000 Bags |
| 46 | Rao Naeem Hasham'S Cold Storage Adda Bonga Hayat | 372919 | Cold Storage | 1995 | 4000 | 5 | Vegetable/ Fruits | 25000 Bags |
| 47 | Rehan Cold Storage Fazal Fruit Farm Bonga Hayat | 0300-6967589 | Cold Storage | 2001 | 9000 | 5 | Vegetable/ Fruits | 10000 Bags |
| 48 | Sammar Cold Storage 2 Km., Pakpattan Road Arifwala | 832083 | Cold Storage | 1984 | 5000 | 13 | Vegetable/ Fruits | 17000 Bags |
| 49 | Shan Cold Storage Fazal Food Farm Bonga Hayat | 520195 | Cold Storage | 1986 | 10000 | 5 | Vegetable/ Fruits | 14000 Bags |
| 50 | Sharif Cold Storage 17 Km Arifwala Bye Pass Qaboola | 851100 | Cold Storage | 2003 | 10000 | 5 | Vegetable/ Fruits | 650000 Bags |
| 51 | Siddique Cold Storage, Near Fruit & Vegetable Market, Depalpur Rd | 0300-6941003 | Cold Storage | 2008 | 9000 | 6 | Vegetable/ Fruits | 20000 Bags |
| 52 | Uwais Cold Storage 126/G, Pakpattan Road, Arifwala | 832433 | Cold Storage | 1994 | 2000 | 7 | Vegetable/ Fruits | 20000 Bags |

| Sr. No. | Name / Address of unit | Phone No. / Website | Industry | Estb. Year | Investment (Th.Rs.) | Emp | Product | Annual Installed Capacity |
|---------|--|-----------------------|--------------------------|------------|---------------------|-----|-------------------|---------------------------|
| 53 | Zam Zam Cold Storage Chak 17 Sp | 404440 | Cold Storage | 2002 | 4400 | 13 | Vegetable/ Fruits | 25000 Bags |
| 54 | Zulfiqar & Sons Cold Storage, Qaboola Road, Arifwala | 7830968, 0300-6619900 | Cold Storage | 2008 | 15000 | 7 | Vegetable/ Fruits | 60000 Bags |
| 55 | Zulfiqar Cold Storage 7Km Qaboola Road Arifwala | | Cold Storage | 2009 | 8000 | 6 | Vegetable/ Fruits | 20000Bags |
| 56 | Afzal Cotton Factory Depalpur Rd | 72134 Pp | Cotton Ginning/ Pressing | 1991 | 1500 | C | Cotton Lint/ Seed | 4 Sawgins , 1 Press |
| 57 | Ali Arshad Industries Pir Ghani Road | 2360 | Cotton Ginning/ Pressing | 1994 | 3500 | C | Cotton Lint/ Seed | 4 Sawgins , 1 Press |
| 58 | Ali Haider Cotton Factory, Chak Nizam Din, Arifwala Road | 7404532, 0300-6999970 | Cotton Ginning/ Pressing | 2008 | 13000 | 5 | Cotton Lint/ Seed | 4 Sawgins , 1 Press |
| 59 | Al-Madni Cotton Industries 4-Km Pakpattan Road Arifwala | 833424 | Cotton Ginning/ Pressing | 1986 | 5000 | 32 | Cotton Lint/ Seed | 4 Sawgins , 1 Press |
| 60 | Al-Qadar Cotton G. & Pressing Industries Thana Road Qabula | 851090 | Cotton Ginning/ Pressing | 1981 | 5000 | 24 | Cotton Lint/ Seed | 4 Sawgins , 1 Press |
| 61 | Anmol Cotton Factory Pir Ghani Road | 371947 | Cotton Ginning/ Pressing | 1991 | 5000 | 28 | Cotton Lint/ Seed | 4 Sawgins , 1 Press |
| 62 | Atemad Cotton Factory Razbah Farid Nagar | 71752 | Cotton Ginning/ Pressing | 1991 | 13000 | C | Cotton Lint/ Seed | 4 Sawgins , 1 Press |
| 63 | Azam Raza Cotton Factory Jhuggian Kundan Lal | 372211-2 | Cotton Ginning/ Pressing | 1992 | 2500 | 42 | Cotton Lint/ Seed | 6 Sawgins , 1 Press |

| Sr. No. | Name / Address of unit | Phone No. / Website | Industry | Estb. Year | Investment (Th.Rs.) | Emp | Product | Annual Installed Capacity |
|---------|---|---------------------|--------------------------|------------|---------------------|-----|-------------------|---------------------------|
| 64 | Bajwah Cotton Ginning & Pressing Factory Village Chanwat Sahiwal Road | 372390 | Cotton Ginning/ Pressing | 1995 | 5000 | C | Cotton Lint/ Seed | 4 Sawgins , 1 Press |
| 65 | Bodla Corporation Sahiwal Road Adda Chanwat | 3615, 71977 3977 | Cotton Ginning/ Pressing | 1976 | 3000 | C | Cotton Lint/ Seed | 4 Sawgins , 1 Press |
| 66 | Chohan Cotton Factory 6-Km. Burewala Road Arifwala | 540322-832202 | Cotton Ginning/ Pressing | 1990 | 8000 | 47 | Cotton Lint/ Seed | 4 Sawgins , 1 Press |
| 67 | Faiz Javaid Cotton Factory Chan Pir Road | 72172 | Cotton Ginning/ Pressing | 1991 | 1600 | C | Cotton Lint/ Seed | 4 Sawgins , 1 Press |
| 68 | Gujjar Cotton Factory Chak Shafi | | Cotton Ginning/ Pressing | 1987 | 4500 | C | Cotton Lint/ Seed | 3 Sawgins , 1 Press |
| 69 | Haji Rahmat Ullah & Sons Bahawal Nagar Rd Arifwala | 832401 | Cotton Ginning/ Pressing | 1986 | 7000 | 22 | Cotton Lint/ Seed | 4 Sawgins , 1 Press |
| 70 | Hanif Anwar Cotton Industries Chak 16/S.P. Depalpur Rd | 72396 | Cotton Ginning/ Pressing | 1980 | 5000 | C | Cotton Lint/ Seed | 4 Sawgins , 1 Press |
| 71 | Hashmi Cotton Mills Sahiwal Road | 76452 | Cotton Ginning/ Pressing | 1980 | 4000 | C | Cotton Lint/ Seed | 4 Sawgins , 1 Press |
| 72 | Hussain Cotton Ginning & Pressing Factory Arifwala Road | 3340 | Cotton Ginning/ Pressing | 1987 | 5000 | C | Cotton Lint/ Seed | 6 Sawgins , 1 Press |
| 73 | Ishfaq Cotton Factory 7 Km Sahiwal Road Chak 149 Eb Arifwala | 550161 | Cotton Ginning/ Pressing | 1992 | 7000 | C | Cotton Lint/ Seed | 4 Sawgins , 1 Press |

| Sr. No. | Name / Address of unit | Phone No. / Website | Industry | Estb. Year | Investment (Th.Rs.) | Emp | Product | Annual Installed Capacity |
|---------|--|---------------------|--------------------------|------------|---------------------|-----|-------------------|---------------------------|
| 74 | Ismæel Ittefaq Cotton Factory Qabula Road, Arifwala | 32590 | Cotton Ginning/ Pressing | 1991 | 4500 | C | Cotton Lint/ Seed | 4 Sawgins , 1 Press |
| 75 | Ittefaq Cotton Ginning & Pressing Fty Sahiwal Road Sahiwal Road Chowk Baba Farid | 372178 | Cotton Ginning/ Pressing | 1971 | 40000 | 25 | Cotton Lint/ Seed | 6 Sawgins , 1 Press |
| 76 | Ittehad Cotton Factory Sahiwal Road Arifwala | 32732 | Cotton Ginning/ Pressing | 1995 | 10000 | C | Cotton Lint/ Seed | 9 Sawgins , 1 Press |
| 77 | Jullundar Private Ltd. Qabula Road Arifwala | 832394 | Cotton Ginning/ Pressing | 1986 | 8000 | 26 | Cotton Lint/ Seed | 4 Sawgins , 1 Press |
| 78 | Madni Cotton G&P Factory Sahiwal Road | 371809 | Cotton Ginning/ Pressing | 1985 | 6000 | C | Cotton Lint/ Seed | 4 Sawgins , 1 Press |
| 79 | Maki Cotton Factory Sahiwal Road | 372783 | Cotton Ginning/ Pressing | 1991 | 3000 | C | Cotton Lint/ Seed | 4 Sawgins , 1 Press |
| 80 | Mian Brothers Cotton Factory Sahiwal Road | 403114 | Cotton Ginning/ Pressing | 1987 | 5000 | C | Cotton Lint/ Seed | 4 Sawgins , 1 Press |
| 81 | Mouj Bahar Cotton Factory Depalpur Rd | 752330 | Cotton Ginning/ Pressing | 1994 | 22000 | C | Cotton Lint/ Seed | 4 Sawgins , 1 Press |
| 82 | Muslim Cotton Factory Bahawalnagar Road Qabula | 51025 | Cotton Ginning/ Pressing | 1971 | 20000 | 31 | Cotton Lint/ Seed | 7 Sawgins , 1 Press |
| 83 | National Industries Cotton Factory Thana Ahmad Yar Arifwala | 832724 | Cotton Ginning/ Pressing | 1986 | 5500 | C | Cotton Lint/ Seed | 4 Sawgins , 1 Press |
| 84 | New Lucky Cotton Factory Near Jamal Chowk Pakpattan | 376387 | Cotton Ginning/ Pressing | 1985 | 30000 | 8 | Cotton Lint/ Seed | 3 Sawgins , 1 Press |

| Sr. No. | Name / Address of unit | Phone No. / Website | Industry | Estb. Year | Investment (Th.Rs.) | Emp | Product | Annual Installed Capacity |
|---------|--|------------------------|--------------------------|------------|---------------------|-----|-------------------|---------------------------|
| 85 | Qabula Cotton Factory Chowk Marlay Arifwala | 51453 | Cotton Ginning/ Pressing | 1986 | 5000 | C | Cotton Lint/ Seed | 4 Sawgins , 1 Press |
| 86 | Sada Bahar Cotton Factory 8-Km, Arifwala Road | 871612-13 | Cotton Ginning/ Pressing | 1993 | 5000 | 22 | Cotton Lint/ Seed | 4 Sawgins , 1 Press |
| 87 | Sardar Cotton G. Pressing Factory 8Th K.M. Qabula Road Arifwala | 832777 | Cotton Ginning/ Pressing | 1985 | 4500 | C | Cotton Lint/ Seed | 4 Sawgins , 1 Press |
| 88 | Shahid Cotton Factory 6 Km., Burewala Road Arifwala | 540269-834298 | Cotton Ginning/ Pressing | 2004 | 5000 | 45 | Cotton Lint/ Seed | 4 Sawgins , 1 Press |
| 89 | Siddique Ikram Industries Kameer Road | 71493 | Cotton Ginning/ Pressing | 1993 | 4000 | C | Cotton Lint/ Seed | 4 Sawgins , 1 Press |
| 90 | Walika Cotton Factory Arifwala | 832601 | Cotton Ginning/ Pressing | 1989 | 9000 | 22 | Cotton Lint/ Seed | 4 Sawgins , 1 Press |
| 91 | Yousaf Ayub Industries Pir Ghani Road | 371512 | Cotton Ginning/ Pressing | 1993 | 150000 | 33 | Cotton Lint/ Seed | 4 Sawgins , 1 Press |
| 92 | Pakpattan Dairies Ltd. Pir Ghani | 042-5864734 5833210 | Dairy Products | 1986 | 30000 | C | Pasteurized Milk | 14400 Th. Litre |
| 93 | Acto Fertilizer (Pvt) Ltd Pakpattan | 021-2577930-3 | Fertilizer | 1993 | 2618 | C | Bio-Fertilizer | 7200 M.Tons |
| 94 | Ijaz Flour Mills Arifwala Road Arifwala | 832390-93 | Flour Mills | 1956 | 12000 | 10 | Flour | 80 M.Tons/ Day |
| 95 | Ittefaq Flour Mills, Jamal Chowk | 372178 | Flour Mills | 2005 | 30000 | 16 | | |
| 96 | Sajid Flour Mills Arifwala | 832907 | Flour Mills | 1980 | 15000 | 9 | Flour | 120 M.Tons/ Day |

| Sr. No. | Name / Address of unit | Phone No. / Website | Industry | Estb. Year | Investment (Th.Rs.) | Emp | Product | Annual Installed Capacity |
|---------|--|---------------------|---------------------|------------|---------------------|-----|---------------------|---------------------------|
| 97 | Shalimar Flour Mills Chak # 20/S0. Sahiwal Rd | 373279 | Flour Mills | 1985 | 2399 | 12 | Flour | 100 M.Tons/Day |
| 98 | Taj Flour Mills Arifwala | 832558 | Flour Mills | 1990 | 5000 | 12 | Flour | 40 M.Tons/Day |
| 99 | Waqas Plastic Industry Sahiwal Road | | Poly Propylene Bags | 1996 | 400 | C | Poly Propylene Bags | 115 M.Tons |
| 100 | Golden Feed Mills Qabula Road Arifwala | 832128 | Poultry Feed | 1985 | 5000 | 10 | Poultry Feed | 30000 M.Tons |
| 101 | Marhaba Poultry Feed Qabula Road Arifwala | | Poultry Feed | 1985 | 1000 | 8 | Poultry Feed | 15000 M.Tons |
| 102 | Rajput Brothers (Pvt) Ltd Chak # 75/E.B. Bnr Road Arifwala | 832289-832489 | Poultry Feed | 1988 | 1800 | 8 | Poultry Feed | 15000 M.Tons |
| 103 | Sona Feed Qabula Road Arifwala | 832289 | Poultry Feed | 1997 | 15000 | 8 | Poultry Feed | 1500 M.Tons |
| 104 | Aamar Rice Mills 3 Km. Qaboola Road Arifwala | 833069 | Rice Mills | 2001 | 11000 | 14 | Rice | 1 Sheller |
| 105 | Afzal Rice Mills Sahiwal Road | 373566 | Rice Mills | 1984 | 10000 | 60 | Rice | 4 Hullers |
| 106 | Ahmed Rice Mills 25 SP Road | 376103 | Rice Mills | 1990 | 3000 | 7 | Rice | 4 Hullers |
| 107 | Ahmed Tayyab Rice Mill 3 Km Burewala Road Ariwala | 3006941225 | Rice Mills | 2010 | 11300 | 9 | Rice | 3 Sheller |
| 108 | Ajmair Rice Mills Pakpattan Road, Arifwala | 833424 | Rice Mills | 1980 | 6000 | 8 | Rice | 4 Hullers |

| Sr. No. | Name / Address of unit | Phone No. / Website | Industry | Estb. Year | Investment (Th.Rs.) | Emp | Product | Annual Installed Capacity |
|---------|---|---------------------|------------|------------|---------------------|-----|---------|---------------------------|
| 109 | Al Amin Rice Plant Burewala Road Arifwala | 300694901 1 | Rice Mills | 2010 | 11000 | 30 | Rice | 3 Sheller |
| 110 | Al-Farid Rice Mills Depalpur Road Rakh | 374478 | Rice Mills | 1988 | 5000 | 56 | Rice | 4 Hullers |
| 111 | Al-Fazal Rice Mills 5-K.M. Qabula Road Arifwala | 831427 | Rice Mills | 1991 | 2000 | 5 | Rice | 3 Hullers |
| 112 | Al-Hameed Rice Factory 25-Sp Road | 373881 | Rice Mills | 1998 | 4500 | 7 | Rice | 4 Hullers |
| 113 | Ali Shaheenshah Rice Mills Arifwala | 831088 | Rice Mills | 1980 | 10000 | 48 | Rice | 3 Hullers |
| 114 | Allah Waris Rice Mills Depalpur Road | 3752136 | Rice Mills | 2001 | 3500 | 21 | Rice | 4 Hullers |
| 115 | Allama Rice Mills Sahiwal Road | 371324 | Rice Mills | 1989 | 1300 | 5 | Rice | 3 Hullers |
| 116 | Almahboob Rice Mill Burewala Road Arifwala | 345694956 7 | Rice Mills | 2010 | 12300 | 5 | Rice | 4 Sheller |
| 117 | Al-Qadir Rice Mills 15 Km., Arifwala Qabula | 851090 | Rice Mills | 1975 | 1200 | 5 | Rice | 2 Hullers |
| 118 | Bismillah Rice Mills Bye Pass Road Qaboola Chowk Fateh | 852152 | Rice Mills | 1995 | 500 | 18 | Rice | 5 Hullers |
| 119 | Blauch Rice Mills Bridge Rakh | 372564 | Rice Mills | 1995 | 500 | 5 | Rice | 3 Hullers |
| 120 | Chishti Rice Mills Sahiwal Road | | Rice Mills | 2008 | 100000 | 10 | Rice | 3 Hullers |

| Sr. No. | Name / Address of unit | Phone No. / Website | Industry | Estb. Year | Investment (Th.Rs.) | Emp | Product | Annual Installed Capacity |
|---------|---|---------------------|------------|------------|---------------------|-----|---------|---------------------------|
| 121 | Choudhary Brothers Rice Mills 5 Km. Arifwala Qaboola Road | 830516 | Rice Mills | 2002 | 8000 | 31 | Rice | 1 Sheller |
| 122 | Choudhary Rice Mills Sahiwal Road Arifwala | 832732 | Rice Mills | 2002 | 10000 | 29 | Rice | 1 Sheller |
| 123 | Data Industry Rice Mill 3Km Burewala Road Arifwala | 3008752985 | Rice Mills | 2010 | 11000 | 35 | Rice | 4 Sheller |
| 124 | Faridia Rice Mills Depalpur Road | 3560 | Rice Mills | 1997 | 1200 | C | Rice | 3 Hullers |
| 125 | Fasil Industries 19/Sp | | Rice Mills | 1995 | 5000 | 5 | Rice | 2 Hullers |
| 126 | Fatima Industries 5 Km., Burewala Road Arifwala | 831460 | Rice Mills | 1980 | 2000 | 22 | Rice | 2 Sheller |
| 127 | Fazal Industries Rice Mills 19 Sp Dhabae Road | 374319 | Rice Mills | 1995 | 8000 | 31 | Rice | 5 Hullers |
| 128 | Fida Rice Mills Depalpur Road | 353071 | Rice Mills | 1980 | 3000 | 5 | Rice | 3 Hullers |
| 129 | Friends Rice Factory Mohallah Farid Pakpattan | 371474 Pp | Rice Mills | 1991 | 2000 | 5 | Rice | 4 Hullers |
| 130 | Ghousia Food Industries Depalpur Road | 3752241 | Rice Mills | 1985 | 5000 | 14 | Rice | 1 Sheller |
| 131 | Haji Ghulam Rasool Muhammad Pur Road Tibba Sher Kot | | Rice Mills | 1997 | 1400 | 5 | Rice | 3 Hullers |

| Sr. No. | Name / Address of unit | Phone No. / Website | Industry | Estb. Year | Investment (Th.Rs.) | Emp | Product | Annual Installed Capacity |
|---------|---|---------------------|------------|------------|---------------------|-----|---------|---------------------------|
| 132 | Haji Rehman Ullah And Sons 3 Km., Qaboola Road Arifwala | 831135 | Rice Mills | 2003 | 8000 | 24 | Rice | 1 Sheller |
| 133 | Hanif Rice Mills Arifwala Road | | Rice Mills | 1998 | 1200 | 5 | Rice | 3 Hullers |
| 134 | Hashmi Rice Mills Sahiwal Road | 376452 | Rice Mills | 1993 | 9000 | 34 | Rice | 3 Hullers |
| 135 | Ijaz Rice Mills Mouza Bhaiday Hawaily Road Bonga Hayat | 810183 | Rice Mills | 1982 | 9000 | 28 | Rice | 1 Sheller |
| 136 | Insaf Rice Mills Sahiwal Road Arifwala | 833558 | Rice Mills | 2003 | 1150 | 50 | Rice | 1 Sheller |
| 137 | Ittefaq Rice Mills Karkhana Road | | Rice Mills | 1976 | 1000 | 5 | Rice | 3 Hullers |
| 138 | Javaid Rice Mills Jhuggian Kundan Lal | 372211-12 | Rice Mills | 1980 | 1000 | 5 | Rice | 3 Hullers |
| 139 | Jullandhar Rice Mills 2-K.M. Depalpur Road | | Rice Mills | 1992 | 2000 | 5 | Rice | 3 Hullers |
| 140 | Karmanwala Rice Mills Hawaily Road Bonga Hayat | 520019 | Rice Mills | 1999 | 8000 | 39 | Rice | 1 Sheller |
| 141 | Kashif Rice Mills Qabula Arifwala | 51949 | Rice Mills | 2000 | 10000 | 45 | Rice | 1 Sheller |
| 142 | Khadar Rice Mills Chowk Fateh Qabula | 851390 | Rice Mills | 1992 | 1000 | 5 | Rice | 2 Hullers |
| 143 | Khagga Rice Mills Sahiwal Road | 374122 | Rice Mills | 1975 | 1500 | 6 | Rice | 3 Hullers |
| 144 | Khalid Rice Mills By Pass Road Qabula | | Rice Mills | 1997 | 1000 | 5 | Rice | 3 Hullers |

| Sr. No. | Name / Address of unit | Phone No. / Website | Industry | Estb. Year | Investment (Th.Rs.) | Emp | Product | Annual Installed Capacity |
|---------|---|---------------------|------------|------------|---------------------|-----|---------|---------------------------|
| 145 | Khokhar Rice Corporation Kameer Road | | Rice Mills | 1997 | 1400 | C | Rice | 3 Hullers |
| 146 | Latif Rice Mills Chak # 20/S.P., Sahiwal Road | | Rice Mills | 1996 | 400 | 5 | Rice | 2 Hullers |
| 147 | Lucky Gunj Shakar Rice Mills Depalpur Rd. | 372221 372891-2 | Rice Mills | 1985 | 1500 | 8 | Rice | 3 Hullers |
| 148 | Lucky Gunj Shakar Pakpattan | 403114 | Rice Mills | 1985 | 2000 | 5 | Rice | 3 Hullers |
| 149 | Lucky Rice Mills 6 Km. Sahiwal Road Arifwala | 834149 | Rice Mills | 2003 | 9000 | 17 | Rice | 1 Sheller |
| 150 | M. Anwar M. Sarwar Rice Mills 12 Km., Arifwala Qaboola Road | 851998 | Rice Mills | 2002 | 900 | 35 | Rice | 1 Sheller |
| 151 | Madina Industries Qabula | 851019 | Rice Mills | 1990 | 1200 | C | Rice | 3 Hullers |
| 152 | Madina Rice Mills 15 Km., Arifwala Bahawalnagar Road | 851019 | Rice Mills | 1985 | 6000 | 15 | Rice | 3 Hullers |
| 153 | Madni Rice Factory Sahiwal Road | 372536 | Rice Mills | 1997 | 1300 | 5 | Rice | 4 Hullers |
| 154 | Majid Rice Mill 4Km Brewala Road Arifwala | 322784420 7 | Rice Mills | 2010 | 15600 | 25 | Rice | 4 Hullers |
| 155 | Makkah Rice Mills Chowk Baba Farid, Depalpur Rd | 372546 | Rice Mills | 1988 | 1200 | 5 | Rice | 3 Hullers |
| 156 | Malik Abid Rice Mills 3Km Burewala Road Arifwala | 300969334 8 | Rice Mills | 2010 | 12000 | 5 | Rice | 5Hullers |

| Sr. No. | Name / Address of unit | Phone No. / Website | Industry | Estb. Year | Investment (Th.Rs.) | Emp | Product | Annual Installed Capacity |
|---------|---|---------------------|------------|------------|---------------------|-----|---------|---------------------------|
| 157 | Malik Niamat Ali Rice Mills Opp: Ahmed Oil, Chak Rakh | | Rice Mills | 1985 | 600 | 5 | Rice | 2 Hullers |
| 158 | Mian Brothers Rice Mills 2 Km., Sahiwal Road Arifwala | 832888 | Rice Mills | 1981 | 3000 | 20 | Rice | 1 Sheller |
| 159 | Moon Rice Mills Chowk Sikander | 510066 | Rice Mills | 1997 | 10000 | 41 | Rice | 1 Sheller |
| 160 | Mujahid Rice Mills Tarikhni Road 3 Km., Arifwala | 0300-6946230 | Rice Mills | 1990 | 6000 | 32 | Rice | 1 Sheller |
| 161 | Muslim Rice Mills Qabula Bahawalnagar Road | 851025 | Rice Mills | 1999 | 200 | 30 | Rice | 4 Hullers |
| 162 | Nicodar Traders 3-K.M. Qabula Road Arifwala | 831731 | Rice Mills | 2002 | 9000 | 47 | Rice | 1 Sheller |
| 163 | Qamar Rice Mills Depalpur Road | | Rice Mills | 1980 | 1500 | 5 | Rice | 3 Hullers |
| 164 | Rana Abdul Jabar Rice Mills Mochi Pura | | Rice Mills | 1997 | 1500 | 5 | Rice | 4 Hullers |
| 165 | Rana Brothers Rice Mills Arifwala Shiwala Road Arifwala | 832999 | Rice Mills | 1999 | 5000 | 28 | Rice | 1 Sheller |
| 166 | Rana Mini Rice Mills Mohallah Muzaffarabad Arifwala | | Rice Mills | 1993 | 700 | 8 | Rice | 5 Hullers |
| 167 | Sardar Rice Factory Arifwala Road Qabula | | Rice Mills | 1996 | 600 | 5 | Rice | 2 Hullers |

| Sr. No. | Name / Address of unit | Phone No. / Website | Industry | Estb. Year | Investment (Th.Rs.) | Emp | Product | Annual Installed Capacity |
|---------|--|---------------------|------------|------------|---------------------|-----|---------|---------------------------|
| 168 | Shahid Rice Mills 4 Km., Qaboola Road Arifwala | 832573 | Rice Mills | 1997 | 10000 | 12 | Rice | 1 Sheller |
| 169 | Sheikh Brothers Rice Mills Faridia Colony Arifwala | 831434 | Rice Mills | 1991 | 6000 | 9 | Rice | 3 Hullers |
| 170 | Shoukat Mustafa Rice Mills Borewala Road Arifwala | 873429 | Rice Mills | 2003 | 700 | 19 | Rice | 7 Hullers |
| 171 | Sona Rice Mills 6 Km., Qabula Road Arifwala | 833989 | Rice Mills | 1996 | 7000 | 19 | Rice | 3 Hullers |
| 172 | Subhan Allah Rice Mills 6 Km Trikhni Road Arifwala | 835155 | Rice Mills | 2005 | 8000 | 54 | Rice | 1 Sheller |
| 173 | Tahir Industries Depalpur Road | 372841 | Rice Mills | 2003 | 3000 | 9 | Rice | 4 Hullers |
| 174 | Taiba Rice Mills | 403077 | Rice Mills | 1995 | 150000 | 7 | Rice | 3 Hullers |
| 175 | Umar Rice Mills Pakpattan Muhammadpur Mehndiwala | 373469 | Rice Mills | 1985 | 500 | 9 | Rice | 4 Hullers |
| 176 | Uncle Rice Mills 5 Km., Bahawalnagar Road Arifwala | 832603 | Rice Mills | 1998 | 12000 | 50 | Rice | 1 Sheller |
| 177 | United Rice And Oil Mills Mohallah Farid Nagar | 372824 | Rice Mills | 1976 | 5000 | 8 | Rice | 3 Hullers |
| 178 | Yasir Rice Mills Sahiwal Road Arifwala | 830491 | Rice Mills | 2003 | 8500 | 27 | Rice | 1 Sheller |
| 179 | Zahoor Rice Mills 16/Sp Pakpattan | 371142 | Rice Mills | 1997 | 1500 | 5 | Rice | 4 Hullers |

| Sr. No. | Name / Address of unit | Phone No. / Website | Industry | Estb. Year | Investment (Th.Rs.) | Emp | Product | Annual Installed Capacity |
|---------|---|--|-----------------|------------|---------------------|-----|---|---|
| 180 | Zaiver Rice Mills Bahawalnagar Road Arifwala | 851702 | Rice Mills | 1992 | 5500 | 9 | Rice | 3 Hullers |
| 181 | Alhamra Seed Corporation Barkat Chowk Qaboola | | Seed Processing | 2008 | 1500 | 12 | Seed Processing | 1 M.Ton |
| 182 | Alharm Seed Corporation Trikhni Road Arifwala | 0300 4942380, 0300 9479823, 045783283 0 | Seed Processing | 2008 | 1000 | 13 | Seed Processing | 2 M.Ton |
| 183 | Alqayum Seed Corporation 7Km Pakpattan Road Arifwala | 0457 836000 | Seed Processing | 2008 | 1000 | 13 | Seed Processing | 7 Ton |
| 184 | Alusman Seed Corporation, Bahawalnagar Road Qaboola | | Seed Processing | 2007 | 1000 | 25 | Seed Corporation | |
| 185 | Basil Seed Corporation 1Km Pakpattan Road Arifwala | 0300 6940973 | Seed Processing | 2008 | 900 | 4 | Seed Processing | 350 Bags (50Kg Bag Each) |
| 186 | Dhoom Seed Corporation Bahawalnagar Road Qaboola | 457851226 | Seed Processing | 2008 | 900 | 12 | Wheat Cotton Paddy Seed Processing | Wheat 160Ton Cotton 7 Ton Paddy 10 Ton |
| 187 | Shama Seed Corporation 18/B Grain Market Arifwala | 0457- 831417 | Seed Processing | 2008 | 800 | 10 | Seed Processing | 5 Ton |
| 188 | Three Brothers Seeds & Agro Chemicals Arifwala | 0300 3631442,0 441 225314 | Seed Processing | 2007 | 1200 | 10 | Seed Processing | 1 M.Ton |

| Sr. No. | Name / Address of unit | Phone No. / Website | Industry | Estb. Year | Investment (Th.Rs.) | Emp | Product | Annual Installed Capacity |
|---------|---|---|------------------|------------|---------------------|-----|-----------------|---------------------------|
| 189 | Turab Seed Corporation Bahwalnagar Road Qaboola | 0300 6942180, 0457 852032, 0457 851423 | Seed Processing | 2007 | 1100 | 8 | Seed Processing | 2 M.Ton |
| 190 | Waqas Qurban Seed Corporation Sahiwal Road | 753134 | Seed Processing | 2002 | 3000 | 14 | Seed Processing | 1 M.Ton |
| 191 | Abdul Haq Soap Factory Gulshan Iqbal Colony Arifwala | 832009 | Soap & Detergent | 1985 | 400 | 6 | Washing Soap | 200 M.Tons |
| 192 | Ahmad Soap Factory Arifwala | 832861 | Soap & Detergent | 1996 | 100 | 6 | Washing Soap | 200 M.Tons |
| 193 | Malik Aziz Soap Factory Pakpattan Road Arifwala | 832850 | Soap & Detergent | 1978 | 500 | 10 | Washing Soap | 200 M.Tons |
| 194 | Malik Sardar M. Iqbal Soap Factory Arifwala | 832615 | Soap & Detergent | 1980 | 500 | 8 | Washing Soap | 200 M.Tons |
| 195 | Muhammad Afzal S/O Khushi Muhammad Soap Fty. Arifwala | 851200 | Soap & Detergent | 1996 | 100 | 8 | Washing Soap | 200 M.Tons |
| 196 | Sajjad Soap Factory, Arifwala | 832884 | Soap & Detergent | 1997 | 600 | 8 | Washing Soap | 200 M.Tons |
| 197 | Shahid Soap Factory Qabula City | 851444 | Soap & Detergent | 1982 | 600 | 8 | Washing Soap | 225 M.Tons |
| 198 | Tahir Soap Factory Arifwala | 832086 | Soap & Detergent | 1997 | 400 | 6 | Washing Soap | 200 M.Tons |

| Sr. No. | Name / Address of unit | Phone No. / Website | Industry | Estb. Year | Investment (Th.Rs.) | Emp | Product | Annual Installed Capacity |
|---------|--|-------------------------|------------------------|------------|---------------------|-----|--|--------------------------------|
| 199 | Rehmat Agro Industries (Pvt)Ltd. Trikhn i Road Arifwala | 457834610 | Solvent Oil Extraction | 2010 | 20000 | 25 | Oil Extraction From Canola Seed, Canola Meal | 1 Compact Unit (150 Ton Daily) |
| 200 | Ittefaq Sugar Mills Ltd., 20 Km., Sahiwal Pakpattan Road | 040-455820, 0457-371588 | Sugar | 1983 | 533792 | 884 | Sugar | 5500 Tcd |
| 201 | Walika Weaving Mills (Pvt) Ltd. Arifwala | 851601 | Textile Weaving | 1991 | 8000 | C | Grey Cloth | 64 Looms |

Source: Directorate of Industries, Punjab

LIST OF CONTACT NUMBERS

Directorate of Industries Punjab

| | |
|------------------------------------|--|
| Director Industries, Punjab | Tel: +92 (42)-99211520-1 Fax: +92 (42)-99211522 dipunjab@gmail.com |
| Additional Director Industries | Tel: +92 (42)-99211531 +92 (42)-99212752 Fax: +92 (42)-99212753 |
| Joint Director (Development) | Tel: +92 (42)-99211526 |
| Senior Economist | Tel: +92 (42)-99211533 |
| Staff Economist | Tel: +92 (42)-99211534 |
| Deputy Director (Admin) | Tel: +92 (42)-99211528 |
| Deputy Director (Development) | Tel: +92 (42)-99211528 |
| Deputy Director (Planning) | Tel: +92 (42)-99211530 |
| Assistant Director (Admin) | Tel: +92 (42)-99211529 |
| Assistant Director (Planning) | Tel: +92 (42)-99211530 |
| Assistant Director (Statistics) | Tel: +92 (42)-99211524 |
| Assistant Registrar | Tel: +92 (42)-99211523 |
| Librarian | Tel: +92 (42)-99213010 |
| District Officer (E&IP), Pakpattan | Tel: +92 (457)-352391 |

Other Relevant Departments

| Department | Contact |
|--|---|
| Secretary, Industries, Commerce & Investment Department, Govt. of the Punjab | Tel: +92 (42) 99210534-5 Fax: +92 (42) 99210536 |
| Punjab Board of Investment & Trade (PBIT) | Tel: +92 (42) 99205201 info@pbit.gop.pk |
| Small & Medium Enterprises Development Authority (SMEDA) | Tel: +92(42)-111-111-456 Fax: +92 (42) 36304926-7 info@smeda.org.pk |
| Punjab Industrial Estates Development and Management Company (PIEDMC) | Tel: +92 (42) 35297203-6 Fax: +92 (42) 35297207 info@pie.com.pk |
| Punjab Small Industries Corporation (PSIC) | Tel: +92 (42) 99200453 |

BIBLIOGRAPHY

- Punjab Development Statistics 2011, Bureau of Statistics, Government of the Punjab
- The Urban Unit, Planning & Development Department, Government of the Punjab.
- Technical Education and Vocational Training Authority
- Chief Inspector of Boilers, Directorate of Industries, Punjab
- Directorate of Agriculture, Crop Reporting Service, Punjab
- Chief Conservator of Forest Planning, Monitoring and Evaluation, Punjab
- Directorate General (Ext), Livestock & Dairy Development Punjab
- Directorate General Mines & Minerals, Punjab
- Punjab Small Industries Corporation
- Punjab Industrial Estates Development and Management Company
- Faisalabad Industrial Estates Development and Management Company
- Industries, Commerce & Investment Department, Government of the Punjab
- District Officers (Enterprise & Investment Promotion) as well as District Administration
- Export Processing Zones Authority
- Board of Investment, Government of Pakistan
- Website of Stat Bank of Pakistan
- Ministry of Commerce, Govt. of Pakistan
- Directory of Industrial Establishments Punjab, Directorate of Industries, Punjab

