

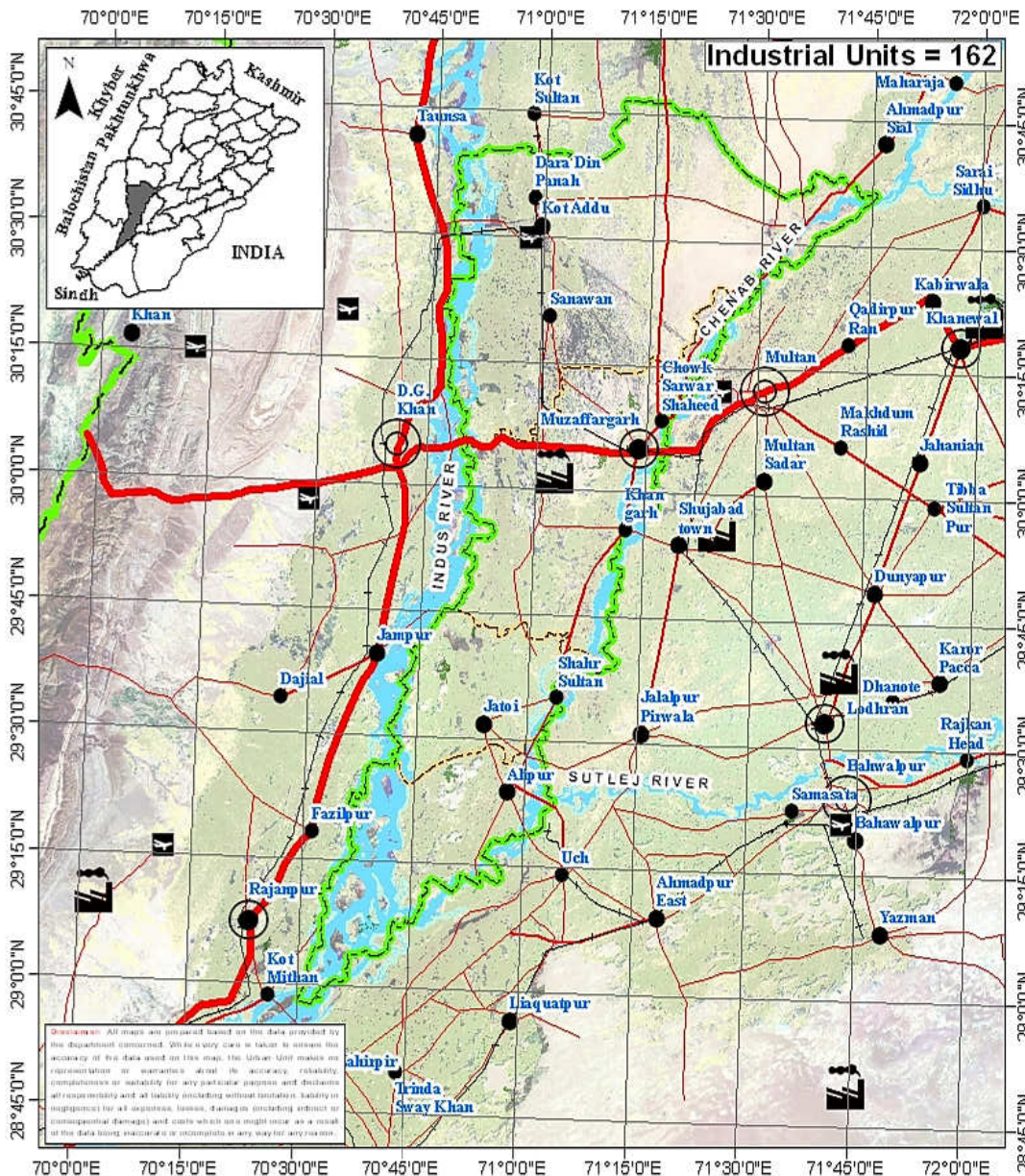
District Pre-Investment Study - 2012

Muzaffargarh



Directorate of Industries, Punjab
Poonch House, Multan Road, Lahore.

District Muzaffargarh



Map No.: MZG-01 Date: 21-01-2013

Scale: 1:2,250,000

0 25 50

Kilometers

Legend

Administrative:

Provincial Boundary

District Boundary

Tehsil Boundary

Divisional Headquarter

District Headquarter

Tehsil Headquarter

Transportation:

Motorway

Provincial Highway

Primary Road

Intercity Road

Pakistan Railway

Airport

Landuse:

River

Agricultural Land

Forest

Industrial Estate



THE URBAN UNIT

Urban Unit, Government of Punjab, Pakistan
15-B, Government, Lahore



Director's Message

After spending past two years in Directorate of Industries, Punjab, I feel very privileged to be writing this message as Director Industries, Punjab.



This is the time we publish the 7th edition of the District Pre-Investment Studies of 36 Districts of Punjab, which has now become synonymous with our commitment to helping Industrialists, new entrepreneurs as well as Researchers. As Director Industries Punjab, I have seen much change, like:

- Relocation plan for the industrial units located within residential areas to industrial estates / positive areas declared by the District Governments.
- Adaptation of Boilers & Pressure Vessels Ordinance 2002.
- Conduct of Census of Manufacturing Industries.
- A scheme "Improvement and Up-gradation of Boilers Inspection Wing" has been approved by the Planning & Development Department, Government of the Punjab with the cost of Rs.10 Million.
- A Scheme "Sports Goods and Material Testing Laboratory" is under process in Planning & Development Department, Government of the Punjab. The estimated cost of the scheme is Rs.450 Million.
- The proposal for Capacity Building of Directorate of Industries Punjab is under process in Industries, Commerce & Investment Department, Government of the Punjab with the estimated cost of Rs.109.75 Million.
- We launch our website www.doi.pitb.gov.pk.

Looking ahead, we are focused on accelerating the execution of growth and promote industrial investment in the province. I am incredibly excited about this and truly believe the best of time for industrial investment is yet to come, Insha Allah.

(Muhammad Siddique Sheikh)
Director Industries, Punjab

Preface

Pre-investment studies for the districts in the Punjab were first published by the Directorate of Industries and Mineral Development, Punjab in the year 1979, with the prime objective of providing data which might interest private entrepreneurs and the framers of the Provincial and National Strategies in the industrial sector.

The second, third, fourth, fifth and sixth series of Pre-investment Studies for all districts of Punjab were published in 1983, 1992, 2002, 2006 and 2009 respectively. The present edition is seventh in the series.

This study basically updates the information contained in sixth series of district pre-investment studies. Efforts have been made to provide latest information collected through published sources, offices of the respective Government Departments/Agencies and District Offices of Industries Department. Quality addition of Industrial Policy Framework, recently promulgated Special Economic Zone Act 2012, Strategic Trade Policy Framework (2012-15) and Digital Maps by Urban Unit has improved these studies significantly.

The information has been updated in respect of population, manpower, production of agriculture crops, fruits, vegetables, livestock, forest resources, ores/minerals, infrastructural facilities such as technical/vocational training facilities, communication net-work, sub-soil water quality/effluent disposal

facilities, power/gas supply, tele-communication facilities, industrial estates, dry ports, industrial financing facilities, loaning scheme of PSIC, industrial policy, investment policy, fiscal incentives, Special Economic Zone Act 2012 and Strategic Trade Policy Framework (2012-15) etc. New policy measures regarding declaration of negative and specified positive areas have also been incorporated.

The study also includes information regarding existing industrial pattern, industry wise installed capacities and details regarding existing major industrial units in each district.

Effort has been made to identify various industries considering the availability of raw materials, skilled labour, linkage between industrial units and local/national/international demand. The suggested industries are, however, merely of indicative nature and it is advisable that prospective investors should conduct detailed feasibility report before making final decision for investment.

It is worthwhile to mention that industrial sector in Punjab has grown gradually from 6,223 industrial units in 1975 to 17,857 industrial undertakings in 2010. Sectoral growth has also been registered, resulting in substantial value addition. Value addition chain can be maximized by processing the agricultural industrial waste like rice husk, cotton stock, maize and corn cob. Herbal products is another untapped area. Live Stock, Dairy Development and poultry are fast growing sectors. Processing of food products can fetch handsome dividends. Currently information technology sector is growing by 39% annually in Pakistan. Fashion

industry is also developing rapidly. Similarly, chemical sector has lot to offer by utilizing the available mineral resources as raw material.

Issue of energy shortage can be addressed by dealing with power generation as an industry. Local as well as foreign investors have golden opportunity to set up power generation stations based on coal and other alternate fuels, under the captive power plants policy allowed in the newly promulgated SEZ Act, 2012. Punjab offers very good opportunity to the local as well as foreign investors to set up small, medium and heavy industries in variety of sectors. It has a growing market of over 90 million consumers, abundant manpower / labour force and cheap raw material with reasonably controlled law & order.

The Industries, Commerce & Investment Department has sufficient institutional frame work of attached and autonomous bodies to look after the industrial issues. Directorate of Industries, Small Industries Corporation (PSIC), Board of Investment (PBIT), Punjab Industrial Estates Development and Management Company (PIEDMC), Faisalabad Industrial Estates Development and Management Company (FIEDMC) have blend of professionals from the public as well as private sector. These legal entities are working in close coordination with the Chambers of Commerce and Industries systematically to promote industrialization and trade.

Development schemes regarding establishment of Industrial Resource Centre at the Directorate of Industries, setting up Sports & Material Testing Lab at EPZ, Sambrial and Industrial Safety Institute are under consideration with the Planning and Development

Department. Completion of these schemes will definitely help in promotion of industrialization process with enhanced industrial safety.

I must record my appreciation to Mr. Muhammad Akram Awan, Senior Economist, who effectively planned, coordinated and provided the guidance to his team members for completion of this study. Credit also goes to Mr. Muhammad Jamil Chishty, Staff Economist for his dedicated support rendered in the completion process of this study and Mr. Waseem Haider, Stenographer, for his tireless typing and composition work on computer.

I am grateful to all the District Officers, Enterprise & Investment Promotion who provided the relevant information of their respective districts for incorporating in pre-investment studies. I am also thankful to various Provincial Departments for supplying the required data to the Directorate of Industries. My special thanks are due to Dr. Nasir Javed, Project Director, Urban Unit for the provision of digital maps and the Punjab Printing Press.

Any suggestion for the improvement of the study will be welcomed.

Dec. 31, 2012

(Muhammad Siddique Sheikh)
Director Industries, Punjab

Contents

Section	Page
District at a Glance	1
1. Geographical Conditions	3
1.1 Brief Description of the District	3
1.2 Climate and General Soil Conditions	4
2. Man-Power	5
2.1 Total Population of the District	5
2.2 Man-Power Availability	6
2.3 Traditional Crafts	9
2.4 Geographical Indications	9
3. Natural Resources	11
3.1 Agriculture	11
a) Main Crops	11
b) Main Fruits	12
c) Main Vegetables	12
3.2 Forests	13
a) Location of Forests and Area under Afforestation	13
b) Production of Timber and Fire-wood	14
3.3 Livestock Population	14
a) Animal Population	14
b) Poultry Population	14
c) Availability of Hides/Skins & Slaughter House Wastes	15
d) Production of Wool	15
3.4 Ores and Minerals	15

4. Infrastructural Facilities	17
4.1 Communication Network	17
a) Road Links	17
b) Rail Links	17
4.2 General Quality and Availability of Sub Soil Water	17
4.3 Effluent Disposal Facilities	18
4.4 Power Supply	18
4.5 Natural Gas Availability	18
4.6 Telecommunication Facilities	18
4.7 Social Infrastructural Facilities	18
4.8 Industrial Estates	19
4.9 Dry Port	19
4.10 Industrial Policy	19
4.11 Declaration of Negative Areas	24
4.12 Declaration of Positive Areas	25
4.13 Incentives for Investors to set a unit in EPZs	26
4.14 Pakistan's Investment Policy – Key Features	28
4.15 Industrial Financing Facilities	31
4.16 Salient Features of Loaning Scheme of PSIC	34
4.17 Salient Features of the SEZ Bill 2012	35
4.18 Strategic Trade Policy Frame Work (2012-2015)	37
5. Existing Pattern of Industrial Development	43
5.1 Description of Existing Industry	43
6. Future Industrial Potential	45
6.1 Agriculture	45
6.2 Livestock	46
6.3 Industry	47
6.4 Demand Based Industries	47
6.5 List of Identified Projects	47

Annex	Page
Directory of Industrial Establishment	49
List of Contact Nos.	69
Bibliography	71

DISTRICT AT A GLANCE

1	Population (000 Numbers)	:	3,652
2	Area (Square Kilometres)	:	8,249
3	Population Density (per sq. km.)	:	443
4	Tehsils / Towns	:	Muzaffargarh, Alipur, Kot Adu and Jatoi.
5	Main Crops	:	Sugarcane, Wheat and Cotton.
6	Main Fruits	:	Mango, Dates, Citrus and Pomegranate.
7	Main Vegetables	:	Onion, Carrot, Cauliflower, Peas and Tomato.
8	Forest Resources (Area in Acres)	:	9,250
9	Mineral Resources	:	Nil
10	Total Metalled Roads (KM)	:	2,863
11	No. of Grid Stations	:	11
12	No. of Telephone Exchanges	:	26
13	Number of Industrial Units (Large Medium and Some Small Selected Sectors)	:	162

-
- 14 Type of Industrial Units : Agricultural Implements, Cold Storage, Cotton Ginning & Pressing, Flour Mills, Jute Textile, Packages, Poly Propylene Bags, Power Generation, Ready Made Garments, Refinery, Rice Mills, Soap & Detergents, Sugar, Sulphuric Acid, Textile Composite, Textile Spinning and Vegetable Ghee / Cooking Oil

CHAPTER - I

GEOGRAPHICAL CONDITIONS

1.1 BRIEF DESCRIPTION OF THE DISTRICT

District Muzaffargarh lies in the form of strip between the river Chenab and Indus, which pass along the Eastern and Western boundaries respectively of the district and form a triangle at Alipur tehsil of the district. The district is bounded on the North by newly created district Layyah, on the South by Bahawalpur and Rahimyar Khan districts across the river Chenab. Districts Multan and Khanewal are on the Eastern side of district Muzaffargarh, across the river Chenab. District Jhang also touches on North-East. While Dera Gahzi Khan and Rajanpur districts lie on the Western side across the river Indus.

District Muzaffargarh is spread over an area of 8,249 square kilometres and comprises four thesils namely:

- i) Muzaffargarh
- ii) Alipur
- iii) Kot Adu
- iv) Jatoi

1.2 CLIMATE AND GENERAL SOIL CONDITIONS

District Muzaffargarh has extreme hot and cold climate throughout its area. A large area of the district consists of sand dunes and barren land. Almost all the area of thesil Alipur and some parts of Muzaffargarh tehsil are flooded each year.

CHAPTER - II

MAN POWER

2.1 TOTAL POPULATION OF THE DISTRICT

According to Punjab Development Statistics 2011, total population of Muzaffargarh district is 3,652 thousand persons out of which 1,899 thousand are males and 1,753 thousand are females. Density of population in the district is 443 persons per square kilometre.

Tehsil wise distribution of Urban and Rural population is given in Table-1

TABLE-1

Town-Wise Distribution of Urban & Rural Population

Town	Population (Thousand Nos.)		
	Urban	Rural	Total
Muzaffargarh	194	1148	1342
Alipur	40	506	546
Kot Addu	166	965	1131
Jatoi	73	560	633
Total	473	3179	3652

Source: Punjab Development Statistics, 2011

2.2 MAN POWER AVAILABILITY

As regards availability of skilled labour, there are 16 technical / commercial / vocational institutions (9 for men and 7 for women) imparting training in various trades e.g. mechanical, electrical, auto-engineering, welding and commerce. Vocational institutions for women impart training in hand/machine embroidery, dress making & designing, etc. In all about 2,073 trained technicians/artisans/workers are turning out every year. The details are given in Table-2.

TABLE - 2

Commercial and Technical Institutions

Sr #	Name & Description of Commercial / Technical Training Institutions	Types of Training Courses Offered	Duration of Course	Average No of Students Enrolled / Session
For Men				
1	Govt. College of Commerce, D.G. Khan Road, Near Jutt Mill, Muzaffargarh	B.Com (Degree), D.Com, Certificate in Computer Application.	6 to 24 Months	388
2	Govt. Institute of Commerce, Kot Addu	B.Com (Degree), D.Com, Certificate in Computer Application.	6 to 24 Months	246

3	Govt. Technical Training Institute, Chowk Sarwar Shaheed, Muzaffargarh	Auto Mechanic, Electrician, Electronics, Certificate in Computer Application, Motor Winding, Microsoft IT Academy.	3 to 12 Months	68
4	Technical Training Centre (DMTC), Ali Pur Road, Shaher Sultan	Auto & Farm, Carpenter, Welder, Turner,	6 Months	25
5	Technical Training Centre (DMTC), Kot Addu	Welder, Turner, Auto & Farm, wiring Technician	6 Months	68
6	Govt. Institute of Commerce, Near PTCL Exchange, Alipur	Certificate in Computer Application, D.Com	6 to 24 Months	262
7	Govt. Technical Training Centre, Miran Multan, Ali Pur Road, Near Wisanday Wali, Tehsil & District Muzaffar Garh	Electrician, Driving, Tailoring, Auto Mechanic (Diesel).	3 Months	40
8	Govt. Technical Training Centre, Jattar, Opp. Forest Office, Sher Sultan Road, Joti.	Welder, Electrical Appliances, Certificate in Computer Application.	6 Months	45

9	Govt. Technical Training Institute, Muzaffar Garh, Jhang Road.	Auto Mechanic, Electrician, Radio & T.V. (HVACR).	12 Months	312
For Women				
10	Govt. Vocational Training Institute, Chowk Sarwar Shaheed, Muzaffargarh	Diploma, Certificate in Computer Application, Beautician, Domestic Tailoring.	6 to 12 Months	77
11	Govt. Vocational Training Institute, Fateh Pur Road, Alipur	Vocational Certificate & Diploma, Tailoring, Beautician.	6 to 24 Months	120
12	Govt. Vocational Training Institute, Ittefaq Colony, Ward No.9, Kot Addu	Vocational Certificate & Diploma, Machine Embroidery, Domestic Tailoring,	6 to 24 Months	118
13	Govt. Vocational Training Institute (RMGTC), Ali Pur, By Pass Road, Taleri, Muzaffargarh	Dress Designing & Making.	12 Months	27
14	Govt. Technical Training Centre, Miran Multan, Ali Pur Road, Wianday Wali, Tehsil & District Muzaffar Garh.	Tailoring, Hand Embroidery.	3 Months	42

15	Govt. Technical Training Centre, Jattoi.	Tailoring, Hand & Machine Embroidery.	3 to 6 Months	45
16	Govt. Vocational Training Institute, Ittefaq Colony, Ward No.9.	Vocational Certificate & Diploma, Domestic Tailoring, Beautician.	6 to 24 Months	190

Source: TEVTA

2.3 TRADITIONAL CRAFTS

Basket weaving, mat, baan making and hand fans from dates leaves are the traditional crafts of the district. Baskets and mats are also prepared from kunder grass, which grows naturally in this area. These crafts are practiced by women in the village and area concentrated in Kot Addu, Muzaffargarh, Alipur and Jattoi. About 2700 persons are engaged in this trade.

2.4 GEOGRAPHICAL INDICATIONS

The Project Director (Geographical Indications), Industries, Commerce & Investment Department, Government of the Punjab has identified the following Important Geographical Indications in the district:

- Nochi Goat
- Khussa (Footwear)

- Kunder
- Pomegranate
- Mango

CHAPTER - III

NATURAL RESOURCES

3.1 AGRICULTURE

a) Main Crops

Sugarcane, Wheat and Cotton are the main crops grown in the district. Production of these crops during the period 2008-09 to 2010-11 is given in Table - 3.

TABLE-3

**Production of Main Crops
(2008-09 to 2010-11)**

Crop	Production (Th. M.Tons)		
	2008-09	2009-10	2010-11
Sugarcane	1721.04	1671.10	1451.78
Wheat	854.70	859.46	891.53
Cotton (000 Bales)	505	488.28	384.89

Source: Directorate of Agriculture, Crop Reporting Service, Punjab

Besides, Rice, Jawar, Bajra, Moong, Mash, Masoor, Ground Nut, Maize, Gram, Guar Seed and Oil Seed such as Rape / Mustard and Sunflower are also grown in minor quantities in the district.

b) Main Fruits

Mango, Dates, Citrus and Pomegranate are main fruits grown in the district. Production of these fruits during the period 2008-09 to 2010-11 is given in Table - 4

TABLE-4

**Production of Main Fruits
(2008-09 to 2010-11)**

Fruit	Production (M.Tons)		
	2008-09	2009-10	2010-11
Mango	195021	243655	236824
Dates	25097	24791	24791
Citrus	8642	9915	9025
Pomegranate	4989	4837	4628

Source: Directorate of Agriculture, Crop Reporting Service, Punjab

Besides, Jaman, Guavas, Phalsa and Banana are also grown in minor quantity in the district.

c) Main Vegetables

Onion, Carrot, Cauliflower, Matter Green and Tomato are main vegetables grown in the district. Production of these vegetables during the period 2008-09 to 2010-11 is given in Table - 5

TABLE-5

**Production of Main Vegetables
(2008-09 to 2010-11)**

Vegetable	Production (M.Tons)		
	2008-09	2009-10	2010-11
Onion	3971	4077	5904
Carrot	2613	2560	2658
Cauliflower	2183	2870	3275
Matter Green	1642	1792	2540
Tomato	7360	9399	13530

Source: Directorate of Agriculture, Crop Reporting Service, Punjab

Besides, Bottle Gourd, Brinjal, Ladyfinger, Turnip, Potato, Garlic and Chillies are also grown in the district in minor quantities.

3.2 FORESTS

a) Location of Forests and Area under Afforestation

An area of 9,250 Acres is under forests, which is about 0.45% of the total area of the district. There is also linear plantation of 2,405 Km alongside the roads/rails/canals in the district. Trees grown in the area are Kikar, Shisham, Millbury, Eucalyptus, Bamboo and Coconut.

b) Production of Timber and Firewood

The production of Timber and Fire-Wood in the district is not mentionable.

3.3 LIVESTOCK POPULATION**a) Animal Population**

The animal population of the district is given in Table - 6.

TABLE - 6**ANIMAL POPULATION**

Animals	Population (Th Heads)
Goats	1215
Cattle	1419
Buffaloes	698
Sheep	368

Source: Livestock & Dairy Development Department.

b) Poultry Population

As per Punjab Development Statistics 2011, there are 1,030 broiler and 90 layer poultry farms in the district having rearing capacity of 18,410 and 220 thousand birds respectively.

c) Availability of Hides / Skins and Slaughter House Wastes

As per Punjab Development Statistics 2011, 1253800 animals were slaughtered in recognized / un-recognized slaughter houses in the district during the year 2009-10, which is a reasonable estimate of the availability of hides and skins in the district:

Blood	451.37 M.Tons
Bones	2157.79 M.Tons
Tallow	425.04 M.Tons

d) Production of Wool

The sheep population of 368 thousand heads in the district is expected to yield about 368 M.Tons of coarse wool annually.

3.4 ORES AND MINERALS

There is no major mineral in the district.

CHAPTER - IV

INFRASTRUCTURAL FACILITIES

4.1 COMMUNICATION NETWORK

a) Road Links

The district has a total metalled road-length of 2863 Kilometres. The District is linked with Multan, Rajanpur, D.G.Khan, R.Y.Khan, Layyah and Mianwali districts through metalled road.

b) Rail Links

Muzaffargarh, Mehmood Kot and Kot Adu are the major Rail heads in the district. The district is linked with Multan, D.G.Khan and Layyah districts through railway network.

4.2 GENERAL QUALITY AND AVAILABILITY OF SUB-SOIL WATER

Under ground water resources are adequate in the district. The sub soil water throughout the district except the Belt in between Chowk Sarwar Shaheed and Rangpur is sweet where the sub soil water is brackish.

4.3 EFFLUENT DISPOSAL FACILITIES

There are two nullahs available in the district. However, prior written permission from Irrigation and Power Department, Government of the Punjab is necessary for disposal of effluent after pre-treatment to remove harmful ingredients.

4.4 POWER SUPPLY

There are 11 grid stations in the district ranging in capacity from 66 KV to 132 KV.

4.5 NATURAL GAS AVAILABILITY

At present natural gas is available in the cities of Kot Adu, Khangarh and Muzafargarh.

4.6 TELE-COMMUNICATION FACILITIES

There are 26 telephone exchanges operating in the district, ranging in capacities from 300 lines to 7000 lines. Cellular phone services are available in the district. Broad Band services are also available at all Exchanges.

4.7 SOCIAL INFRA-STRUCTURAL FACILITIES

Social infra-structural facilities available in the district are given in Table - 7.

TABLE - 7

SOCIAL INFRA-STRUCTURAL FACILITIES

Tehsil	Primary / Middle / high / higher secondary School	College	Hospital	Police station	Railway stations	Post office	Banks
Muzaffar-Garh	758	7	5	8	4	18	28
Kot Adu	892	3	4	5	7	10	24
Alipur	268	3	2	5	-	3	8
Jatoi	330	2	2	3	-	3	9
Total	2248	15	13	21	11	34	69

Source: Punjab Development Statistics 2011 / Respective District Offices.

4.8 INDUSTRIAL ESTATE

At present, there is no industrial estate in the district.

4.9 DRY PORT

There is no dry port in the district.

4.10 INDUSTRIAL POLICY

- Foreign investors are permitted to hold 100% of the equity of industrial projects without any permission of the Government.
- No prior Government sanction is required for establishment of an industry outside Ex-

Municipal Territorial Limits of Town Committees / Municipal Corporation irrespective of its cost and size except the following covered under schedule 'C':-

- a. Arms & Ammunition.
 - b. Security Printing Currency & Mint.
 - c. High Explosives.
 - d. Radio Active Substances.
 - e. Alcoholic Beverages or Liquors.
1. No industrial unit mentioned in Schedule-A of the notification No. AEA-III-4-3-9/91, dated 30.09.2002 or industrial unit exceeding a total cost of Rs. 100.00 million shall be set up within 10 miles (16 Kms) of international border:

List of Manufacturing Industries

- a) Basic Metal Industry.
- b) Petro-Chemical Industries (Excluding Products Industries).
- c) Large size Machine Tool Factories (Limit of Investment to be determined).
- d) Heavy Foundry Works.
- e) Heavy Electric Complexes.
- f) Heavy Mechanical Complexes.
- g) Electronics Industries.
- h) Major Vehicle Assembly Plants.
- i) Ordnance Factories.
- j) Explosives, Nitric acid and Sulphuric acid plants.
- k) Vehicular Tires and Tubes Industries.

- l) Locomotives and Railway Carriage manufacturing plants.
 - m) Government Mint.
 - n) Security Printing Press involved in whole time printing of sensitive documents / currency notes.
 - o) Manufacture of optical glass and optics.
 - p) Nickle cadmium battery industries.
 - q) Nuclear / Separation Plants.
 - r) Large Power Generating Stations.
 - s) Large oil Storage units.
 - t) Oil refineries.
2. No industrial unit shall be set up in areas affected by flood flowing transversely in the strip of one mile of either side across the Grand Trunk Road from Shahdara Town to Muridke Town, without prior permission of the Provincial Government.
 3. According to the notification No. AEA-III-3-5/2003 (Vol-III), dated 06.12.2006, “no new sugar mill shall be setup and no enlargement in capacity of the existing sugar mills is allowed in the Province”.
 4. Each district Government may declare “negative area” for industry. Such “negative area” be determined by a District Committee after consultation with all stake-holders in light of general policy guidelines issued by the Industries, Commerce & Investment

Department and exemptions allowed under Schedule 'B' of this Notification as under:

List of Service Industries

- a) Furniture (excluding Band Saw) and also excluding storing Timber / Wood.
- b) Tailoring/ Readymade garments.
- c) Laundry / Dry Cleaning.
- d) Bakery (excluding confectionery).
- e) Syrups (excluding squashes)
- f) Cosmetics.
- g) Service workshop.
- h) Cereal Products like vermicilles.
- i) Candles making.
- j) Printing and Packaging.
- k) Hand loom carpet weaving.
- l) Hotels.
- m) Bidi manufacturing.
- n) Handmade shoes / shoe repairing workshop.
- o) Spooling and thread balls.
- p) Small Hosiery units employing not more than 10 workers.
- q) Atta Chakkies.
- r) Installation of Chaff cutters.
- s) Cotton Grading.
- t) Other small industrial undertakings which do not fall under the Sixth schedule of the Punjab Local Government Ordinance, 2001.

“Other small industrial undertakings” would mean an industrial undertaking in which the total fixed assets (including the cost of land)

do not exceed Rs.1.0 million (Rupees one million).

5. No industrial unit mentioned in Schedule 'C' of this Notification shall be set up anywhere in the Punjab without prior approval of the Government.
6. The Government reserves the right to refuse establishment / enhancement of any industrial undertaking which is in contravention of the public interest, ecology or any other law / rules for the time being in force.
7. The Government may relax any of the provisions of this notification in case of a particular unit or industry or class of units or industries.
8. NOC from Environment Protection Department, Govt. of the Punjab is required for setting up new Industries.
 - Tourism has been given the status of industry in accordance with Ministry of Industries & Production Circular No. 1-129/99-INV-IV dated 2nd August 1999.
 - The Housing and Construction Sector has also been declared as industry (Finance Division Notification No. 10(10)/IF-11/98, dated 07.04.1999 and 04.06.1999.

- In accordance with Government notification No. 3(2)/97-INV-IV dated 05.05.1997, Computer Software and Information Technology (IT) have been declared as Industry.

4.11 DECLARATION OF NEGATIVE AREAS

In pursuance of the Clause 4 of the Location Policy notified on 30-09-2002, by the Industries, Commerce & Investment Department, Government of the Punjab, the District Govt. Muzaffargarh has declared the following negative areas:-

- a) Industrial units already set up within radius of 1-10 KM affected by the flood flowing from river strip would adopt safety measures to safe guard their installations.
- b) Industrial Units would not be allowed to be established with in the Municipal limit of 1-10 KM.
- c) No Industry or industrial units would be set up in thickly populated area.
- d) The illegal spreading of oil business or oil agencies near PARCO in Qasba Gujrat Tehsil Kot Adu District Muzaffargarh would be banned. Dealer would be directed to shift their oil agencies at least 5 KM away from PARCO in Qasba Gujrat Tehsil Kot Adu District Muzaffargarh.

4.12 DECLARATION OF SPECIFIED POSITIVE AREAS

Vide the Finance Act, 2008, the Government of Pakistan has enacted a new section “23A” in the Income Tax Ordinance 2001. The Section “23A” is reproduced below:-

“First year allowance.- (1) Plant, Machinery and equipment installed by any industrial undertaking setup in specified rural and under developed areas, and owned and managed by a company shall be allowed first year allowance in lieu of initial allowance under Section 23 at the rate specified in Part II of the third schedule against the cost of the “eligible depreciable assets” put to use after July 1st, 2008.

(2) The provision of Section 23 except sub-sections (1) and (2), thereof, shall mutatis mutandis apply.

The Federal Government may notify “Specified areas” for the purpose of sub-section(1)”

In pursuance of the above mentioned notification District Government Muzaffargarh has identified and approved the following specified positive areas for setting up industrial undertakings:-

“All areas other than Negative Area as mentioned above.”

4.13 INCENTIVES FOR INVESTORS TO SETUP A UNIT IN EPZs

- a) According to EPZs Authorities, following incentives are available in the Export Processing Zones
1. 100% ownership rights.
 2. 100% repatriation of capital & profits.
 3. No minimum or maximum limit for investment.
 4. Duty free imports of machinery, equipment & material.
 5. No sales tax on input goods including electricity & gas bills.
 6. Obsolete/old machinery can be sold in domestic market of Pakistan after payment of applicable duties & taxes.
 7. Freedom from National import restrictions.
 8. Foreign exchange control regulation of Pakistan not applicable.
 9. Defective goods/waste can be sold in domestic market after payment of applicable duties, maximum upto 3% of total value of export.
 10. Duty free vehicle allowed under certain conditions. After 5 years of use, vehicles

- can be disposed off in domestic market on payment of duty on depreciated value.
11. Domestic market of Pakistan available on same conditions as for imports from other countries.
 12. Units operating in EPZs can undertake sub-contracting for units of tariff area subject to payment of duty and taxes on value addition only.
 13. Only EPZA is authorized to collect Presumptive tax at the time of export of goods which would be final tax liability.
 14. EPZ units allowed to supply goods to Custom manufacturing bonds.
 15. Production oriented labour laws to be solely regulated by the Authority.
 16. EPZ manufacturer will be treated at par with bonded manufacturers in tariff area for any future incentives to be announced for exporters.
 17. Relief from double taxation subject to bilateral agreement.
- b) Facilities to Investors for setting up a unit in EPZs of Pakistan.
1. One window service and simplified procedure.
 2. All infrastructural facilities like water, electricity, gas, telex, fax and telecommunication system are made available by EPZA.

3. Skilled & un-skilled labour available in abundance.
4. Sub-contracting without limit on variety and quantity is allowed outside the zone as well as within the zone.
5. The garment manufacturing units located in Export Processing Zones are eligible to participate in auction of quotas.
6. GSP concessions given by various countries to imports from Pakistan are available to the manufacturers in the zone.
7. Peaceful, secure and environmentally protected / pollution free work area.
8. Inter-unit transfer of finished goods among exporting units allowed.

4.14 PAKISTAN'S INVESTMENT POLICY - KEY FEATURES

General

- The investment policy is liberal and business friendly as it has been designed in consultation with businessmen, investors and representative forums as well as the Multinational Companies (MNCs).
- It provides equal investment opportunities for both domestic and foreign investors.
- All economic sectors open for FDI (Foreign Direct Investment).
- 100% foreign equity allowed.
- No government sanction required.

- Foreign investment on repatriable basis is allowed in all economic sector including manufacturing, agriculture, services, infrastructure and social sectors.
- Foreign investment in Agriculture projects allowed on joint-venture basis by associating minimum local equity of 40%.
- Remittance of Royalty, Technical & Franchise Fee, Capital, Profits, Dividends allowed.
- Minimum foreign equity for non-manufacturing including services sector has been reduced from \$ 0.3 to \$ 0.15 million. In Agriculture, infrastructure and social sectors, it is \$ 0.3 million.

Tariff and Tax Incentives

- To keep Pakistan competitive in international tariff 5% customs duty has been allowed on import of plant and machinery which is not manufactured locally.
- Sales tax 0% across the board.
- 0% duty on import of raw material for export industry.
- 0% duty on import of agriculture machinery.
- Tax relief in shape of Initial Depreciation Allowance (IDA) has been provided as 50% of machinery cost across the board.
- Tax relief has also been provided for expansion and Balancing, Modernization & Replacement (BMR) in existing industries.

Policy Package of Pakistan

Policy Parameters	Mfg. Sector	Non-Manufacturing Sectors		
		Agriculture	Infrastructure & Social	Services including IT & Telecom Services
Govt. Permission	Not required except for specified industries*	Not required except specific licences from concerned agencies.		
Remittance of capital, profits, dividends, etc.	Allowed	Allowed		
Upper Limit of foreign equity allowed	100%	100%	100%	100%
Minimum Investment Amount (M \$)	No	0.3	0.3	0.15
Customs duty on import of PME**	5%	0%	5%	0-5%
Tax relief (IDA***, % of PME cost)	50%	50%		
Royalty & Technical Fee	No restriction for payment of royalty & technical fee.	Initial lump-sum up to \$100,000 Max Rate 5% of net sales - Initial period 5 years		

* Specified Industries:

- i) Arms and ammunitions
- ii) High Explosives
- iii) Radioactive substances

- iv) Security Printing
- v) Currency and mint

** PME = Plant, Machinery and Equipment

*** IDA = Initial Depreciation Allowance

4.15 INDUSTRIAL FINANCING FACILITIES

Following Financial Institutions in the country are providing various types of fixed investment industrial financing in the foreign and local currency to the industrial sector for establishment of new industrial units as well as for Expansion, Balancing, Modernization and Replacement (BMR) of existing industrial units within the frame-work of industrial/financial policies of the Government of Pakistan.

- 1 AlBaraka Bank (Pakistan) Limited.
- 2 Allied Bank Limited.
- 3 Askari Bank Limited.
- 4 Bank Alfalah Limited.
- 5 Bank Al-Habib Limited.
- 6 Bank Islami Pakistan Limited.
- 7 Barclays Bank PLC.
- 8 Burj Bank Limited.
- 9 Citi Bank N.A.
- 10 Deutsche Bank A.G.
- 11 Dubai Islamic Bank Pakistan Limited.
- 12 Faysal Bank Limited.

- 13 First Women Bank Limited.
- 14 Habib Bank Limited.
- 15 Habib Metropolitan Bank Limited.
- 16 HSBC Bank Middle East Limited.
- 17 Industrial and Commercial Bank of China
- 18 Industrial Development Bank of Pakistan.
- 19 JS Bank Limited.
- 20 KASB Bank Limited.
- 21 MCB Bank Limited.
- 22 Meezan Bank Limited.
- 23 National Bank of Pakistan.
- 24 NIB Bank Limited.
- 25 Oman International Bank S.A.O.G.
- 26 S.M.E. Bank Limited.
- 27 Samba Bank Limited
- 28 Silk Bank Limited.
- 29 Sindh Bank Limited.
- 30 Soneri Bank Limited.
- 31 Standard Chartered Bank (Pakistan)
Limited.
- 32 Summit Bank Limited
- 33 The Bank of Khyber
- 34 The Bank of Punjab
- 35 The Bank of Tokyo-Mitsubishi Limited.
- 36 The Punjab Provincial Cooperative Bank
Limited.

37 United Bank Limited.

38 Zarai Taraqiati Bank Limited.

Source: State Bank of Pakistan

List of Development Financial Institutions (DFIs)

- 1 Bankers Equity Limited.
- 2 House Building Finance Company Limited.
- 3 Pak Brunei Investment Company Limited
- 4 Pak-China Investment Company Limited.
- 5 Pak Oman Investment Company Limited.
- 6 PAIR Investment Company Limited.
- 7 Pakistan Kuwait Investment Company Limited.
- 8 Pak-Libya Holding Company Limited.
- 9 Saudi Pak Industrial & Agricultural Investment Company Limited.

Source: State Bank of Pakistan

Besides the financial institutions mentioned above a number of Leasing Companies, Modaraba Companies, Investment Banks are also providing financing facilities to the industrial sector. Punjab Small Industries Corporation also extends financial assistance to the small/cottage industrial units.

4.16 SALIENT FEATURES OF LOANING SCHEME OF PSIC

Punjab Small Industries Corporation (PSIC) is a body corporate enacted in 1973. One of core functions of PSIC is financial assistance programme for prospective entrepreneurs, skilled youth, artisans and craftsmen all over the Punjab. The priority sectors are as under:

- Service Industries.
- Agro / Agro Support Industries.
- Food Processing Industries.
- Export Oriented Industries.
- Import Substitution Industries.
- Information Technology (IT) Project.
- Handicraft Industry.
- Women Enterprises.

PSIC started credit assistance programme during 1984 and completed 13 schemes up till now. An amount of Rs. 4079 Million has been disbursed to 19,580 entrepreneurs in 36 Districts of Punjab with the recovery rate of 88% that indicates proper utilization of loans.

The maximum loan limit is Rs.3 Million with debit equity ratio of 60:40. The credit assistance facility available for new projects, BMR and Working Capital. The markup rate varies from 0% to 12%.

The repayment period of loan is from 3 years to 6 years with grace period of 3 months to 6 months.

Recently, Government of Punjab has provided an amount of Rs. 2000 Million for disbursement through Service Provider Organization i.e. M/s Akhuwat to un-employed and skilled persons of PVTC, TEVTA, SANATZAR's of Social Welfare Department or other unemployed youth having good business plan.

Up till now, M/s Akhuwat has disbursed an amount of Rs. 1650.00 Million to 94,960 poor household in 33 vocations with average loan size of Rs. 17,382 in Punjab through its 142 offices in 30 districts of the Punjab.

To promote the traditional handicrafts in Punjab, PSIC has also launched dedicated credit assistance schemes for the craftsmen at subsidized markup rates. These craftsmen have also been provided marketing facilities through Pakistan Handicrafts Shops.

4.17 SALIENT FEATURES OF THE SEZ BILL 2012

The Law of SEZ has been made to meet the global challenges of competitiveness to attract FDI. The Law/bill will allow to create industrial clusters with liberal incentives, infrastructure, investor facilitation services to enhance productivity and reduce cost of doing business for economic

development and poverty reduction. The Law further envisages to reduce processes through SEZ in Pakistan. The establishment of SEZs will attract both domestic as well as international investors. The SEZ would play a pivotal role in the economic development of Pakistan as has been witnessed in case of China, Malaysia, Thailand and other states.

It extends to the whole of Pakistan and overrides other laws (anything contrary);

- All SEZ whether Public, Public-Private or Private-Private to be governed under this Act;
- The Board of Approval (BOA) headed by the Prime Minister of Pakistan with the Minister for Finance as the Vice Chairman shall meet as frequently as required but not less than twice a year and decisions shall be taken by a majority of the total membership present and voting;
- SEZs will have exemption from customs duties & taxes for all Capital Goods imported into Pakistan for the development , operations and maintenance of a SEZ;
- Exemption from all taxes on income accruable in relation to the development and operations of the SEZ for a period of ten years, starting from the date of signing of the Development Agreement.
- Zone Enterprises have exemption from custom duties etc. on imports of Capital Goods;

- Exemption from taxes on income for a period of 10 years starting from the date the Development certifies that the Zone Enterprise has commenced commercial operations in the relevant SEZ;

There is no limit to the economic potential of Pakistan. The challenge is to create the enabling environment in which this can be realized. Special Economic zones bill is a step towards the economic stability in the country.

4.18 STRATEGIC TRADE POLICY FRAME WORK (2012-2015)

The government unveiled on 29 January, 2013 a medium term (2012-2015) Strategic Trade Policy Framework, setting a cumulative export target of \$95 billion for three years. The framework, the second announced by the federal government will be implemented with a funding of Rs. 26.14 billion. In the first year, Rs.5 billion will be spent on providing subsidies and support to identified sectors.

The focus of the policy is on promoting regional trade and regulatory efficiency, promoting agro-processed exports, increasing exports from less developed regions, revamping export promotion agencies, increasing green exports, enhancing role of women in exports and pursuing product and market development and diversification.

The salient features of the policy include institutional interventions, export development initiatives and regulatory amendments. The policy, offers cash assistance to 14 sectors along with 19 regulatory frameworks, including ban on products as a protective measure against environmental and health hazards. The new framework is designed to provide assistance only to the non-textile sectors.

Institutional Measures: The government will setup institutions like an Export-Import (Exim) Bank, Pakistan Land Port Authority; Leather Export Promotion Council and a Services Trade Development Council.

Export Development: Major initiatives in the Policy included allowing mark-up rate support of two per cent on prevailing LTFF for future import and purchase of machinery. An allocation of Rs.500 million has been proposed for schemes to be implemented this year. The total amount to be spent in three years is projected at Rs.3 billion. A mark-up support of 1.5% will be provided on export finance scheme (EFS) to selected sectors at a cost of Rs. 1.25 billion, including Rs. 200 million in 2012-2013.

The sectors for EFS support are fish and fish preparations, fruit and vegetables, spices, meat and meat preparations, carpets and rugs, sports

goods, footwear, leather products, surgical goods, cutlery, onyx products, pharmaceuticals, electric fans, transport equipment, electrical machinery, specialized machinery, furniture, handicrafts and computer-related services.

An amount of Rs.14 billion will be given as adhoc relief at three per cent of FoB to offset the impact of higher cost of utilities for exporters in selected sectors. The measure will cost Rs.3bn this year. An amount of Rs.2 billion-Rs125 million will be allocated for marketing development assistance for regional countries.

A Rs. 25 million allocation has been proposed for export promotion campaigns for agro-processed products; Rs. 400 million for encouraging opening of retail outlets; and Rs.400m for subsidizing 50% cost of plant and machinery for establishing processing plants for meat, fruits, vegetables, dates and olives in Azad Jammu and Kashmir, Baluchistan, Gilgit - Baltistan and Khyber Pakhtunkhwa.

An amount of Rs.30 million will be allocated for upgrading rice inspection laboratories, Rs. 20 million for subsidy at 100% of the prevailing mark-up rate for establishing mining and processing units in Khyber Pakhtunkhwa and Baluchistan.

Another Rs.20 million has been allocated for strengthening women's chamber of commerce and

industry, Rs.32 million for setting up a resource management cell at the ministry of commerce, Rs.28 million for establishing leather export promotion council and Rs.70 million for services export development council.

Regulatory Measures

Unrestricted import of used motorized wheelchairs and five-year-old used or second-hand ambulances has been allowed. Two per cent of export proceeds will be allowed to manufacturers-cum-exporters for duty-free import of accessories for value-addition for leather garments and made-ups. Import of non-hazardous plastic scrap has been allowed for industrial consumers for use as raw material. A ban has been imposed on import of plastic waste, hospital waste, used sewerage pipes and chemical containers.

Import of non-sterilized surgical needles and syringes will be restricted to industrial units, condition of Euro-II may be made applicable on import of all types of specialized vehicles, such as crane-mounted lorries, dump trucks and mixtures lorries. The import of used sprinkle lorries will be restricted to a maximum of five year old. All goods from banned list imported in commercial quality shall be allowed to re-export at importer/shipping lines cost. The imported substandard goods from the restricted list should be destroyed within a period of six months without offering any release.

Import of waste and scrape of tyres in completely shredded/ cut form will only be allowed to industrial consumers; domestic standards will equally apply to imported goods as well.

Construction engineering and electrical companies will be allowed to retain abroad the exported machinery to carry out work on export-cum-import basis with the condition that they will import the same on the conclusion of the contract against indemnity bond.

All exporters of edible products are to be registered and export of vegetable ghee and cooking oil will be allowed in packaging of up to 25kg to encourage value-addition.

Steps to contain Environmental & Health Hazards

- Ban on import of plastic waste/scrap-hospital waste, used sewerage pipes and chemical containers.
- Restricting import of non-sterilized surgical needles and syringes to industrial units.
- Only the more fuel efficient Euro-II category crane-mounted lorries, dump trucks, mixture lorries, etc, will be imported.
- Imported used tyres will only be allowed for industrial use.

Institutions to be Setup

- Export-Import Bank.
- Pakistan Land Port Authority.
- Leather Export Promotion Council.
- Service Trade Development Council.

CHAPTER - V

EXISTING PATTERN OF INDUSTRIAL DEVELOPMENT

5.1 DESCRIPTION OF EXISTING INDUSTRIES

There are about 162 large, medium and some small industrial units in the district. Industry-wise installed capacity of major industrial units is given in Table-8.

TABLE-8

Industry-wise Installed Capacity

Sr. #	Industry	No. of units	Annual Installed Capacity
1	Agricultural Implements	18	2285 Nos.
2	Cold Storage	2	62000 Bags
3	Cotton Ginning & Pressing	81	405 Sawgins, 86 Press
4	Flour Mills	11	1440 M.Tons /Day
5	Jute Textile	2	4696 Spindles, 670 Looms
6	Packages	1	5000 Th.Nos.
7	Poly Propylene Bags	2	4880 M.Tons
8	Power Generation	5	3769 MW
9	Ready Made Garments	1	500 Lac Rs.
10	Refinery	1	4.5 Million M.Tons
11	Rice Mills	10	10 Shellers
12	Soap & Detergents	3	7000 M.Tons

13	Sugar	3	26000 TCD
14	Sulphuric Acid	1	15 M.Tons/Day
15	Textile Composite	2	101136 Spindles, 1272 Rotors, 196 Looms, 287 Stitching Machines
16	Textile Spinning	18	574564 Spindles, 1000 Rotors, 206 Looms
17	Vegetable Ghee / Cooking Oil	1	1800 M.Tons

Source: District Officer (E&IP), Muzaffargarh.

Note: For further details visit: www.doi.pitb.gov.pk

CHAPTER - VI

FUTURE INDUSTRIAL POTENTIAL

Keeping in view the availability of raw material, skilled labour, linkage between the industrial units, local / national / international demand, future industrial potential of district Muzaffargarh is discussed hereunder:

It would, however, be kept in mind that though the above mentioned factors facilitate the success of any industrial unit, yet the entire success depends upon the investors / entrepreneurs and the capabilities of the personnel having the managerial control because any of these factors, if lacking is manageable. Therefore, it is advisable that detailed feasibility of industrial projects must be carried out before making final decision for investment.

6.1 AGRICULTURE

Main crops of the district Muzaffargarh are wheat, cotton and Sugarcane. The average annual production of wheat and sugar cane over the period 2008-09 to 2010-11 was about 868.54 and 1614.64 thousand M.Tons and of cotton was 459.33 thousand bales.

Mango Dates, Citrus and Pomegranate are major fruits. Their average annual production over the

period 2008-09 to 2010-11 was 225.167, 24.485, 9.194 and 4.818 thousand M.Tons respectively. (Chapter 3, Section 3.1).

There are 20 textile mills, 2 jute mills, 1 vegetable ghee unit, 3 sugar mills, 11 flour mills and a number of oil expelling units and cotton ginning/pressing factories already operating in the district (chapter-5).

In view of the above, there still exists more scope for textile weaving, processing/printing, textile made-up i.e. Hosiery, Towel, Canvas / Tarpaulin / tents, readymade garments, sports-wear, etc. In addition, there also exists good prospects for fruit-juice, pickles and squashes units, Dates processing / packing and Vinegar from Dates. PCSIR has already developed a process of producing vinegar from dates.

6.2 LIVESTOCK

According to Punjab Development Statistics 2011, the population of cattle buffaloes, sheep and goats was 1419, 698, 368 and 1215 heads respectively. As regards poultry, there are 1030 Broilers and 90 Layers Poultry farms having rearing capacity of 18410 and 220 thousand birds respectively. The annual availability of hides and skins is estimated at 1253800 pieces.

In view of above, there exists good scope for Dairy Farms cattle / Sheep / Goats Fattening Farms, Dairy Products Units, Hatchery / Breeding Poultry Farm, Animal / Poultry Feed and Tannery Unit.

6.3 INDUSTRY

Based on refinery by-product like Benzene, Toluene, Xylene and Molasses from Sugar Mills, various chemical units can be established such as Dyes, Industrial Alcohol, Citric Acid, etc.

6.4 DEMAND BASED INDUSTRIES

Keeping in view general local requirements of the district, there exists good prospects for Steel Doors and Windows, Agricultural Implements and Hand Tools, Straw Board, Shoes Making, Packing Boxes, Plastic Utensils, etc.

6.5 LIST OF IDENTIFIED PROJECTS

As per discussion given in Sections 6.1 to 6.4, the following projects have been identified in the district for investment:-

- Agriculture Waste / by products raw material based industries for maximization of value addition chain.
- Animal / Poultry Feed
- Agricultural Implements and Hand Tools
- Citric Acid

- Canvas Cloth / Tarpaulin / Tents
- Cattle / Sheep / Goats Fattening Farms
- Dyes
- Dairy Farms
- Dairy Products
- Dates Processing / Packing
- Energy conservation / efficiency
- Fruit Juice and Pickles and Squashes
- Flush Door / Window
- Hosiery
- Hatchery / Breeding
- Industrial Alcohol
- Packing Boxes
- Plastic Utensils
- Particle/ Chip / Veneer Doors
- Power generation through coal and other alternate fuels
- Power generation through bagasse
- Readymade Garments
- Straw Board
- Shoe Making
- Sport-wears
- Steel Door / Windows
- Tannery
- Towel Making
- Textile (Weaving, Processing & Printing)
- Vinegar from Dates
- Waste heat recovery systems

Directory of Industrial Establishments, Muzaffargarh

Sr. No.	Name / Address of unit	Phone No. / Website	Industry	Estb. Year	Investment (Th.Rs.)	Emp	Product	Annual Installed Capacity
1	Abdul Ghafoor Mechanical Works, Gt Road, Sinawan, Tehsil Kot Addu	0345-7354955	Agricultural Implements	1994	800	8	Agricultural Implements	100 Nos.
2	Durrani Engineering Industries, Gt Road, Kot Addu	2242546, 2241546	Agricultural Implements	1963	2000	20	Agricultural Implements	200 Nos.
3	Fakhar Alam (Mughal Ka Zari Allat), Gt Road, Kot Addu	2242488	Agricultural Implements	1970	1500	15	Agricultural Implements	170 Nos.
4	Hafeez Mechanical Works, Gt Road, Kot Addu	2241859	Agricultural Implements	2003	700	5	Agricultural Implements	100 Nos.
5	Hanif Bakht (Anwar Ka Zari Allat), Gt Road, Kot Addu	0301-7887098	Agricultural Implements	2003	800	8	Agricultural Implements	110 Nos.
6	Ittefaq Bakht (Anwar Ka Zari Allat), Gt Road, Kot Addu	0300-4222866	Agricultural Implements	1998	800	8	Agricultural Implements	100 Nos.
7	Ittehad Mechanical Works, Gt Road, Kot Addu	0300-6860639	Agricultural Implements	1994	900	10	Agricultural Implements	120 Nos.
8	Jarrar Mechanical Works, Gt Road, Kot Addu	0334-6004671	Agricultural Implements	2005	700	6	Agricultural Implements	100 Nos.

Sr. No.	Name / Address of unit	Phone No. / Website	Industry	Estb. Year	Investment (Th.Rs.)	Emp	Product	Annual Installed Capacity
9	Kisan Engineering Works G.T.Road Kot Adu	0308-6977514	Agricultural Implements	1991	800	5	Agricultural Implements	120 Nos.
10	Majeed Mechanical Works, Gt Road, Sinawan, Tehsil Kot Addu		Agricultural Implements	1995	1000	10	Agricultural Implements	140 Nos.
11	Mehmood Ul Hassan Engineering Works G.T. Road Kot Adu	0300-748047, 0333-6012975	Agricultural Implements	1998	400	5	Agricultural Implements	150 Nos.
12	Mukhtar Hussain Mechanical Works G.T. Road Kot Adu	0345-6005520	Agricultural Implements	1993	300	5	Agricultural Implements	100 Nos.
13	Mushtaq Mechanical Works G.T.Road Kot Adu	0301-6981316	Agricultural Implements	1988	800	6	Agricultural Implements	200 Nos.
14	Noor Wheat Threshar & Trolly Makers, Gt Rodad, Sinawan, Tehsil Kot Addu	0345-7155205	Agricultural Implements	2000	600	4	Agricultural Implements	80 Nos.
15	Pak Mughal Mechanical Works, Gt Road, Kot Addu	03000-7480917	Agricultural Implements	1998	1000	10	Agricultural Implements	150 Nos.
16	Saeed Ahmed Mechanical Works G.T. Road Gujrat Kot Adu	0300-751453	Agricultural Implements	1990	300	5	Agricultural Implements	125 Nos.

Sr. No.	Name / Address of unit	Phone No. / Website	Industry	Estb. Year	Investment (Th.Rs.)	Emp	Product	Annual Installed Capacity
17	Shabbir Mechanical Works, Parco Road, Qasba Gujrat, Tehsil Kot Addu	0301-7871320	Agricultural Implements	2005	700	6	Agricultural Implements	100 Nos.
18	Shah Mechanical Works G.T.Road Kot Adu	0333-6006385	Agricultural Implements	1987	700	6	Agricultural Implements	120 Nos.
19	Al-Ghazi Ice & Cold Storage Gnass Nalla	2424652	Cold Storage	1991	13000	22	Ice, Fruit / Vegetables	30000 Bags
20	Bismillah Cold Storage Khan Nalla Ali Pur	2755672	Cold Storage	1990	5500	7	Vegetable/ Fruits	32000 Bags
21	Ahmed Cotton Industries Chowk Permit Jatoi	2359300	Cotton Ginning And Pressing	1980	12000	67	Cotton Lint /Seed	10 Sawgins 2 Press
22	Al-Aziz Cotton Ginners Medwala Road Chowk Permit Alipur	2359222	Cotton Ginning And Pressing	1989	8000	33	Cotton Lint /Seed	8 Sawgins 2 Press
23	Al-Haider Cotton Factory Sinawan Kot Adu	2450525	Cotton Ginning And Pressing	1996	8800	63	Cotton Lint /Seed	5 Sawgins 1 Press
24	Al-Hamad Cotton Factory Madwala Road Chowk Permit Jatoi	2359279	Cotton Ginning And Pressing	1986	3000	43	Cotton Lint /Seed	6 Sawgins 1 Press
25	Al-Hamd Cotton Industries, Ghazi Ghat	2359279	Cotton Ginning And Pressing	1986	8500	56	Cotton Lint /Seed	4 Sawgins 1 Press
26	Al-Hameed Cotton Ginnings Mudwala Road Chowk Permit Jatoi	2359456	Cotton Ginning And Pressing	1988	7500	C	Cotton Lint /Seed	6 Sawgins 1 Press

Sr. No.	Name / Address of unit	Phone No. / Website	Industry	Estb. Year	Investment (Th.Rs.)	Emp	Product	Annual Installed Capacity
27	Al-Hasnain Cotton Industries Lundi Pitafi Road Jatoi	2591832	Cotton Ginning And Pressing	1997	11000	55	Cotton Lint /Seed	5 Sawgins 1 Press
28	Al-Hassan Cotton Industries Multan Road Ali Pur	255233	Cotton Ginning And Pressing	1991	8000	50	Cotton Lint /Seed	4 Sawgins 1 Press
29	Ali Hassan Cotton Factory & Oil Mills Seetpur Road Alipur	2511555	Cotton Ginning And Pressing	1994	9500	44	Cotton Lint /Seed	5 Sawgins 1 Press
30	Ali Rehan Cotton Industries Shah Jamal Road Head Baluaing	2690013	Cotton Ginning And Pressing	1998	16000	56	Cotton Lint /Seed	5 Sawgins 1 Press
31	Alipur Cotton Inds (Pvt) Ltd. Seetpur Road, Alipur	2591707	Cotton Ginning And Pressing	1994	5000	36	Cotton Lint /Seed	4 Sawgins 1 Press
32	Al-Karam Cotton Industries Bait Mir Hazar Khan Jatoi	2683678	Cotton Ginning And Pressing	1991	9000	55	Cotton Lint /Seed	4 Sawgins 1 Press
33	Al-Karim Cotton Factory Mouza Karimwala Aludaya- Wali	2630100	Cotton Ginning And Pressing	1991	9800	39	Cotton Lint /Seed	6 Sawgins 1 Press
34	Al-Manzoor Cotton Industries Shah Jamal Road Head Bakanim Garh	2690215	Cotton Ginning And Pressing	1986	7500	60	Cotton Lint /Seed	4 Sawgins 1 Press

Sr. No.	Name / Address of unit	Phone No. / Website	Industry	Estb. Year	Investment (Th.Rs.)	Emp	Product	Annual Installed Capacity
35	Al-Qadir Cotton Ginning & Pressing Oil Mills Shah Jamal Road Jatoi	2512473	Cotton Ginning And Pressing	1987	7500	C	Cotton Lint /Seed	4 Sawgins 1 Press
36	Al-Raheem Cotton Industries Jhuggiwala Jattoo	2460085	Cotton Ginning And Pressing	2002	9500	55	Cotton Lint /Seed	4 Sawgins 1 Press
37	Al-Raza Cotton Industries Mouza Harpli Alipur Road Jatoi	2620374	Cotton Ginning And Pressing	1987	7800	58	Cotton Lint /Seed	4 Sawgins 1 Press
38	Al-Shoaib Cotton Factory Mianwala Road Kot Adu	241699	Cotton Ginning And Pressing	1993	3000	C	Cotton Lint /Seed	6 Sawgins 1 Press
39	Amir Azam Cotton Factory Sultan Pur Road Khairpur Alipur	0300-6862850	Cotton Ginning And Pressing	1995	8500	C	Cotton Lint /Seed	5 Sawgins 1 Press
40	Amjad Farood Cotton Factory Ghazi Ghat Kot Adu	2480122	Cotton Ginning And Pressing	2000	9500	45	Cotton Lint /Seed	4 Sawgins 1 Press
41	Amjad Mustafa Cotton Factory, Head Banaini, Gudpur	2680122	Cotton Ginning And Pressing	2006	15000	12	Cotton Lint /Seed	5 Sawgins 1 Press
42	Ashiq & Sons Cotton Factory Alipur Road Khairpur Sadat	2530286	Cotton Ginning And Pressing	1989	8500	C	Cotton Lint /Seed	5 Sawgins 1 Press

Sr. No.	Name / Address of unit	Phone No. / Website	Industry	Estb. Year	Investment (Th.Rs.)	Emp	Product	Annual Installed Capacity
43	Bajwa Model Ginning Factory Khangarh Road Shah Jamal	2470100	Cotton Ginning And Pressing	1989	9100	56	Cotton Lint /Seed	5 Sawgins 1 Press
44	Barat Cotton G/P Factory & Oil Mill Punjnad Road Alipur	0300-6862850	Cotton Ginning And Pressing	2000	8000	47	Cotton Lint /Seed	5 Sawgins 1 Press
45	Bisma Industries Cotton G/P & Oil Mill Ali Pur Road, Jatoi	2591447	Cotton Ginning And Pressing	1986	9000	45	Cotton Lint /Seed	5 Sawgins 1 Press
46	Bismillah Cotton Factory G.T.Road Kot Adu	242835	Cotton Ginning And Pressing	1987	8000	40	Cotton Lint /Seed	5 Sawgins 1 Press
47	Bismillah Cotton Industries Multan Road Shahr Sultan	0301-7476043	Cotton Ginning And Pressing	1997	6000	C	Cotton Lint /Seed	4 Sawgins 1 Press
48	Bukhsh Cotton Factory, Rampur Road, Jatoi		Cotton Ginning And Pressing	1997	8500	C	Cotton Lint /Seed	4 Sawgins 1 Press
49	Daha Cotton Factory Head Bakaini, Jatoi Shah Jamal Road	2023863	Cotton Ginning And Pressing	1994	4500	30	Cotton Lint /Seed	4 Sawgins 1 Press
50	Danial Seed Cotton Traders D.G.Khan Road Ghazi Ghat	2480222	Cotton Ginning And Pressing	2003	9500	63	Cotton Lint /Seed	5 Sawgins 1 Press
51	Ehsan Elahi Cotton Factory Mouza Wains Jatoi Road Jatoi	2706511-2539	Cotton Ginning And Pressing	1988	3300	35	Cotton Lint /Seed	4 Sawgins 1 Press

Sr. No.	Name / Address of unit	Phone No. / Website	Industry	Estb. Year	Investment (Th.Rs.)	Emp	Product	Annual Installed Capacity
52	Faisal Bilal And Co Cotton Industry Shah Jamal Rd Jatoi	2559521	Cotton Ginning And Pressing	1987	7600	C	Cotton Lint /Seed	5 Sawgins 1 Press
53	Faisal Waqas Cotton Industry (Pvt) Ltd Head Bakaini Jatoi	2706906-591735	Cotton Ginning And Pressing	2000	6500	40	Cotton Lint /Seed	4 Sawgins 1 Press
54	Fazal Ejaz & Co Cotton Ginners Punjad Road Alipur	2701076	Cotton Ginning And Pressing	1981	15000	C	Cotton Lint /Seed	6 Sawgins 1 Press
55	Ghafoor Cotton Mills (Pvt) Ltd. Khanghar Road Shah Jamal	2470112	Cotton Ginning And Pressing	1991	9000	56	Cotton Lint /Seed	5 Sawgins 1 Press
56	Gilani Cotton Factory Bait Angra Kot Adu	2249049	Cotton Ginning And Pressing	1980	7500	C	Cotton Lint /Seed	5 Sawgins 1 Press
57	Gilani Cotton Factory Unit 2 Tounsa Road Kot Adu	2243661	Cotton Ginning And Pressing	1980	8000	54	Cotton Lint /Seed	5 Sawgins 1 Press
58	Hasnian Imran Cotton Industries Multan Road Ghazi Ghat Kot Adu	0304-6600600	Cotton Ginning And Pressing	2005	9300	5	Cotton Lint /Seed	5 Sawgins 1 Press
59	Hussain Ginners Ltd Mouza Khulung Janubi Jatoi Road Head Bakaini	2422399	Cotton Ginning And Pressing	1990	7500	60	Cotton Lint /Seed	5 Sawgins 1 Press
60	Imran Khan Cotton Factory Chowk Alouday Wali	2640240	Cotton Ginning And Pressing	1982	9000	C	Cotton Lint /Seed	4 Sawgins 1 Press

Sr. No.	Name / Address of unit	Phone No. / Website	Industry	Estb. Year	Investment (Th.Rs.)	Emp	Product	Annual Installed Capacity
61	Imtiaz Karim Cotton Industries (Pvt) Ltd. Karim Abad Head Bakaini Jatoi Road		Cotton Ginning And Pressing	1990	8500	C	Cotton Lint /Seed	4 Sawgins 1 Press
62	Inam Cotton Factory Gurmani Road Lasory Kharan Kot Adu	2510252-60	Cotton Ginning And Pressing	1996	8500	50	Cotton Lint /Seed	4 Sawgins 1 Press
63	Inamullah Brothers Cotton Industries, Ghazi Ghat, Multan Road	2480274	Cotton Ginning And Pressing	2006	15000	20	Cotton Lint /Seed	5 Sawgins 1 Press
64	Iqbal Brothers Cotton Industries, Multan Road, Alipur	2755311	Cotton Ginning And Pressing	1972	8000	53	Cotton Lint /Seed	5 Sawgins 1 Press
65	Kazmi Brothers Cotton Industries (Pvt) Ltd. Jatoi Road, Alipur	255071	Cotton Ginning And Pressing	1993	8000	13	Cotton Lint /Seed	4 Sawgins 1 Press
66	Khakhi Cotton Industries Umerabad Near Rohillanwali	2640200	Cotton Ginning And Pressing	1988	6500	C	Cotton Lint /Seed	4 Sawgins 1 Press
67	Khan Br. Cotton Ginning & Pressing Factory Multan Road Shaher Sultan	2920199	Cotton Ginning And Pressing	1994	9000	C	Cotton Lint /Seed	4 Sawgins 1 Press

Sr. No.	Name / Address of unit	Phone No. / Website	Industry	Estb. Year	Investment (Th.Rs.)	Emp	Product	Annual Installed Capacity
68	Khan Brothers Cotton Industries Damarwala Shumali Road Makwal Jatoi	2620094	Cotton Ginning And Pressing	1994	7500	C	Cotton Lint /Seed	5 Sawgins 1 Press
69	Leghari Cotton (Pvt) Ltd. Mauza P.O. Mir Hazzar Khan Jatoi	2690255	Cotton Ginning And Pressing	1991	8500	C	Cotton Lint /Seed	4 Sawgins 1 Press
70	Madina Cotton Factory G.T.Road Kot Adu	2222658	Cotton Ginning And Pressing	1978	6500	C	Cotton Lint /Seed	5 Sawgins 1 Press
71	Malik Brothers Cotton Ginning Factoryjatoi Road Shaher Sultan	2863912	Cotton Ginning And Pressing	1986	8500	62	Cotton Lint /Seed	5 Sawgins 1 Press
72	Millat Ginning Industries Alipur Road Wasandaywali Khangarh	2364132	Cotton Ginning And Pressing	1994	5400	C	Cotton Lint /Seed	5 Sawgins 1 Press
73	Mir Hazar Khan Cotton Industries & Oil Mills Bait Mir Hazar Khan Jatoi	2512152	Cotton Ginning And Pressing	1999	9500	47	Cotton Lint /Seed	5 Sawgins 1 Press
74	Nadir Iqbal Cotton Industries Near Chowk Godad Multan Road	2469636	Cotton Ginning And Pressing	2004	9500	5	Cotton Lint /Seed	4 Sawgins 1 Press
75	Naeek Muhammad And Sons Cotton Factory Alipur Road Sher Sultan Jatoi	2591097	Cotton Ginning And Pressing	1989	9500	C	Cotton Lint /Seed	4 Sawgins 1 Press

Sr. No.	Name / Address of unit	Phone No. / Website	Industry	Estb. Year	Investment (Th.Rs.)	Emp	Product	Annual Installed Capacity
76	Najaf Cotton Industries & Oil Mills Mouza Damarwala Shumali Jatoi	2630033	Cotton Ginning And Pressing	1996	9300	72	Cotton Lint /Seed	5 Sawgins 1 Press
77	Nat Cott (Pvt) Ltd. Mouza Shah Jand, Multan Road, Ali Pur	2706511-9518, 9519	Cotton Ginning And Pressing	1989	6000	75	Cotton Lint /Seed	10 Sawgins 2 Press
78	New Khalil Cotton Industries Shah Jamal Road Head Bakaini	2690020	Cotton Ginning And Pressing	2000	9500	44	Cotton Lint /Seed	4 Sawgins 1 Press
79	New Mehran Bilal Cotton Industries D.G. Khan Road Near Qureshi Chowk	2462743, 466830	Cotton Ginning And Pressing	2004	9000	5	Cotton Lint /Seed	5 Sawgins 1 Press
80	Noor Hayat Cotton Industries Marha Gharbi Rohlan Wali		Cotton Ginning And Pressing	1988	8000	65	Cotton Lint /Seed	4 Sawgins 1 Press
81	Pak Punjab Cotton Factory Sher Sultan Road Hamza Wali Alipur	2755477	Cotton Ginning And Pressing	1980	9000	C	Cotton Lint /Seed	4 Sawgins 1 Press
82	Qureshi Cotton Industries Sheikh Umer Road Kot Adu	2241487	Cotton Ginning And Pressing	1976	6500	C	Cotton Lint /Seed	6 Sawgins 1 Press
83	Rabbani Cotton Factory Khar Gharbi Road Sinwan Kot Adu	2450005	Cotton Ginning And Pressing	1978	7500	C	Cotton Lint /Seed	4 Sawgins 1 Press

Sr. No.	Name / Address of unit	Phone No. / Website	Industry	Estb. Year	Investment (Th.Rs.)	Emp	Product	Annual Installed Capacity
84	Rana Cotton Factory G.T Road Shahr Sultan Jatoi	2620037	Cotton Ginning And Pressing	1995	9500	C	Cotton Lint /Seed	5 Sawgins 1 Press
85	Rao Industries Jatoi Road Shahr Sultan	0301-7560295	Cotton Ginning And Pressing	1987	3100	C	Cotton Lint /Seed	4 Sawgins 1 Press
86	Rawal Traders Multan Road Ghazi Ghat	2480040	Cotton Ginning And Pressing	2001	8000	45	Cotton Lint /Seed	4 Sawgins 1 Press
87	Riaz Zaffar Cotton Factory Jhugiwala Jatoi	2460077	Cotton Ginning And Pressing	2001	8500	60	Cotton Lint /Seed	5 Sawgins 1 Press
88	Roomi Cotton Factory Unit 3, Thatha Garmani Sanawan Kot Adu	2202014	Cotton Ginning And Pressing	1970	7000	35	Cotton Lint /Seed	4 Sawgins 1 Press
89	Roomi Cotton Ginning Inds. (Pvt). Ltd. Ali Pur Muzaffar Garh Road, Allaudewali	2690241	Cotton Ginning And Pressing	1990	4000	50	Cotton Lint /Seed	5 Sawgins 1 Press
90	Saddar-Ur-Din Cotton Industries Mouza Uidad Jatoi	2391401	Cotton Ginning And Pressing	2005	7500	C	Cotton Lint /Seed	5 Sawgins 1 Press
91	Sahib Cotton Industries Shah Jamal Road Head Bakinai	2690150	Cotton Ginning And Pressing	2005	11000	6	Cotton Lint /Seed	5 Sawgins 1 Press
92	Shabbir Ginning & Oil Inds. Jatoi Road Sher Sultan	2620503	Cotton Ginning And Pressing	1994	8500	55	Cotton Lint /Seed	5 Sawgins 1 Press

Sr. No.	Name / Address of unit	Phone No. / Website	Industry	Estb. Year	Investment (Th.Rs.)	Emp	Product	Annual Installed Capacity
93	Shah Jamal Cotton Ginning Pressing & Oil Mills Mouza Jahlam Multan Road Alipur	2359363	Cotton Ginning And Pressing	1989	10000	40	Cotton Lint /Seed	10 Sawgins 2 Press
94	Shah Shamas Cotton Ind. (Pvt) Ltd. Mauza Hamza Wali Alipur	2359226	Cotton Ginning And Pressing	1985	11000	50	Cotton Lint /Seed	10 Sawgins 2 Press
95	Shakir Ejaz Enterprises Multan Road Alipur	2755233	Cotton Ginning And Pressing	1990	4200	C	Cotton Lint /Seed	7 Sawgins 1 Press
96	Sher Sultan Cotton Ginners & Pressing Mills Jatoi Road Sher Sultan	2620745	Cotton Ginning And Pressing	1987	8500	5	Cotton Lint /Seed	4 Sawgins 1 Press
97	Silver Fibre Model Ginning Factory Moza Kotla Lal Shah Shahr Sultan	0300-8633500	Cotton Ginning And Pressing	1988	8000	C	Cotton Lint /Seed	6 Sawgins 1 Press
98	Sohaib Model Industries Dare Road Choke Karam Dad Qureshi	2450103	Cotton Ginning And Pressing	1990	13000	41	Cotton Lint /Seed	4 Sawgins 1 Press
99	Wali Cotton Factory Permit Jatoi Road Jatoi	2591135	Cotton Ginning And Pressing	1989	8000	C	Cotton Lint /Seed	6 Sawgins 1 Press
100	Zafar Cotton Ginning & Pressing Factory 8 Km Jallu Sahu Alipur Rd Jatoi	2752315	Cotton Ginning And Pressing	1996	9500	48	Cotton Lint /Seed	5 Sawgins 1 Press

Sr. No.	Name / Address of unit	Phone No. / Website	Industry	Estb. Year	Investment (Th.Rs.)	Emp	Product	Annual Installed Capacity
101	Zeeshan Cotton Industries Punjnad Road, Alipur	2706511	Cotton Ginning And Pressing	1988	3700	35	Cotton Lint /Seed	4 Sawgins 1 Press
102	Abdullah Flour Mills, Layyah Road Kot Adu	22242872	Flour Mills	1986	12000	17	Flour	120 M.Tons /Day
103	Al-Kareem Flour Mills Jhang Road	2422436	Flour Mills	1994	10000	15	Flour	120 M.Tons /Day
104	Arif Afzal Flour Mills Multan Road Kot Adu	2241527	Flour Mills	1990	8500	37	Flour	160 M.Tons /Day
105	Beeno Flour Mills Multan Road	2423203	Flour Mills	1983	9000	30	Flour	200 M.Tons /Day
106	Botta Flour & General Mills, D.G. Khan Road, Ghazi Ghat,	0300-4739330, 0300-8637297	Flour Mills	2008	10000	10	Flour	100 M.Tons /Day
107	Hamza Flour Mills Jatoi Road Sher Sultan	2620503	Flour Mills	2002	9500	12	Flour	120 M.Tons /Day
108	Kamran Flour And General Mills (Pvt) Ltd., Talari By Pass Road	2422663-4	Flour Mills	1979	9800	29	Flour	160 M.Tons /Day
109	Madina Flour Mills Shah Jamal Road Jatoi City	2591244	Flour Mills	1998	8500	18	Flour	80 M.Tons /Day
110	New Rehman Flour Mills Ltd. G. T. Road Kot Adu	2242679	Flour Mills	1992	9500	31	Flour	100 M.Tons /Day
111	Shoaib Qasim Flour & General Mills Kot Adu	2241699	Flour Mills	1994	8200	34	Flour	120 M.Tons /Day

Sr. No.	Name / Address of unit	Phone No. / Website	Industry	Estb. Year	Investment (Th.Rs.)	Emp	Product	Annual Installed Capacity
112	Tanveer Rasool Flour Mills (Pvt) Ltd., 34 Km. Alipur Road Rohilanwali	2640117	Flour Mills	1992	12500	23	Flour	160 M.Tons /Day
113	Madina Jute Mills Ltd., Mm Road Khanpur Begga Sher	2490051, 2490227	Jute Textile	1990	47500	942	Hessain, Sacking	3984 Spindles , 169 Looms
114	Thal Jute Mills Ltd. D.G Khan Road Muzaffargarh	2423164-5, 2422501	Jute Textile	1966	85538	3344	Jute Yarn /Hessian	712 Spindles , 501 Looms
115	Zaib Packages 5 Km., Jhang Road	2423749 www.sgpoly sacks.com	Packages	1991	1700	21	Corrugated Box	5000 Th.Nos.
116	S.G. Polysacks (Pvt) Ltd., 5Th Km, Jhang Road	2423757-49-59	Poly Propylene Bags	1998	127088	55	Poly Propylene Bags, Polythene Bags	3600 M.Tons, 200 M.Tons
117	Taj Poly Products (Pvt) Ltd., 5Th Km., Jhang Road	2490223	Poly Propylene Bags	1999	30000	45	Polythene Bags	1080 M.Tons
118	Aes Lal Pir Ltd., Lalpir Near Mahmoodkot	2422967, www.aes.com	Power Generation	1994	5000000	51	Electricity	365 Mw
119	Aes Pak-Gen. (Pvt) Co. Near Mahmood Kot Kot Adu	2422967-9, www.aes.com	Power Generation	1995	4000000	51	Electricity	362 Mw
120	Kot Addu Power Ltd., Gtps Kot Addu	06622-41336, www.kapco.com.pk	Power Generation	1996	24099960	618	Electricity	1600 Mw
121	Mehmood Power Generation Ltd., 7 Km. Multan Road Mahmood-abad	2424802	Power Generation	1997	277975	139	Electricity	9.2 Mw

Sr. No.	Name / Address of unit	Phone No. / Website	Industry	Estb. Year	Investment (Th.Rs.)	Emp	Product	Annual Installed Capacity
122	Thermal Power Station (Npgcl) Mahmood Kot Road	9200151-2	Power Generation	1987	27208189	1644	Electricity	1350 Mw
123	Hilal Fashion Garments (Pvt) Ltd. Basira, D.G. Khan Road	2440106, 2440142	Readymade Garments	1993	53228	223	Ready Made Garments	500 Lac Rs.
124	Pak Arab Refinery Ltd, Qasba Gujrat, Mahmood Kot	2290990-8	Refinery	1974	38420148	1127	Crude Oil Processing	4.5 Million M.Tons
125	Ali Rice Mills, D.G. Khan Road	2480249	Rice Mills	2008	300	3	Rice	1 Huller
126	Al-Noor Rice Factory Basti Ali Shah Jamal Jatoi Road	2610542	Rice Mills	1981	3800	C	Rice	1 Sheller
127	Arain Rice Mills G.T. Road Sanawan Kot Adu	0300-6788128	Rice Mills	1999	5500	14	Rice	1 Sheller
128	G.H. Rice Mills G.T. Road Kot Adu	2243515	Rice Mills	1999	6500	26	Rice	1 Sheller
129	Khan Rice Factory G.T. Road Kot Adu	2241855	Rice Mills	1977	5000	18	Rice	1 Sheller
130	Kisan Rice Mills, Sinawan, Tehsil Kot Adu	2250395	Rice Mills	2008	4500	30	Rice	1 Sheller
131	Mahr Rice Factory Tibbi Nizam Sinawan Kot Adu	2250068	Rice Mills	1994	4600	22	Rice	1 Sheller

Sr. No.	Name / Address of unit	Phone No. / Website	Industry	Estb. Year	Investment (Th.Rs.)	Emp	Product	Annual Installed Capacity
132	Maryam Rice Mills Alipur Road Khangarh	2910495	Rice Mills	1986	1200	C	Rice	1 Sheller
133	S.K. Rice Mills 5 Km Qureshi Chowk Jatoi Road	2019377	Rice Mills	1996	3800	19	Rice	1 Sheller
134	Yousaf Rice Mills Old Qureshi Multan Road	2450118	Rice Mills	2000	5500	19	Rice	1 Sheller
135	Al-Faiz Soap Factory Multan Road	2422602, 2423058	Soap & Detergent	1998	700	10	Washing Soap	3000 M.Tons
136	Al-Saleem Soap Factory Alipur Road, Near Khangarh		Soap & Detergent	1989	600	5	Washing Soap	2000 M.Tons
137	Mamun Soap Factory Muhallah Qaimwala	2423058	Soap & Detergent	1987	1000	8	Washing Soap	2000 M.Tons
138	Fatima Sugar Mills Ltd., Fazal Garh, Sinawan, Kot Addu	0662250512-4, www.fatima_group.com	Sugar	1988	925120	871	Sugar	8000 Tcd
139	Sheikhoo Sugar Mills Ltd; Anwarabad, Sinawan, Kot Addu	0300-8476670-72	Sugar	1990	450000	960	Sugar	10000 Tcd
140	Tandlianwala Sugar Mills Ltd., Ext-ii, (Rahman Hajra), Mouza Ali Wala, Mondka Road, Shah Jamal	2027661-2	Sugar	2006	1620000	1200	Sugar	8000 Tcd

Sr. No.	Name / Address of unit	Phone No. / Website	Industry	Estb. Year	Investment (Th.Rs.)	Emp	Product	Annual Installed Capacity
141	Riaz Aslam Industries, 13 Km Jhang Road, Muradabad	0303-6663084, 061-580639	Sulphuric Acid	1997	12500	19	Sulphuric Acid	15 M.Tons /Day
142	Azgard Nine Ltd., Alipur Road	0662-422503, 422651, www.azgard.com	Textile Composite	2002	1737308	4513	Cotton Yarn	39024 Spindles, 1272 Rotors, 93 Looms, 287 Stitching Machines
143	Mahmood Textile Mills Ltd. (Unit No. 4) D.G.Khan Road	2516728, www.mahmoodgroup.com	Textile Composite	1970	444186	382	Cotton Yarn	62112 Spindles, 103 Looms
144	Ahmad Hassan Textile Mills Ltd. Chowk Sarwar Shaheed, Mm Road, Kot Adu	2211490, www.ahtml.com.pk	Textile Spinning	1989	947065	261	Cotton Yarn, Grey Fabric	17640 Spindles, 103 Looms
145	Apollo Textile Mills Ltd Jaisal Wahin Jhang Road	066-2424965, www.apollotextile.com	Textile Spinning	1973	14832	1268	Cotton Yarn	52500 Spindles
146	Aziz Spintex (Pvt) Limited. Mm.Rd. Khanpur Shumali Bagga Sher	2490187	Textile Spinning	1991	4134	26	Cotton Yarn	600 Rotors
147	Chaudhery Brother Khanpur Shumali	2490178	Textile Spinning	1999	3330	23	Cotton Yarn	200 Rotors
148	Faisal Asad Textile Mills Ltd Chowk Sarwar Shaheed M.M. Road	2210165, 2210565	Textile Spinning	1991	249887	563	Cotton Yarn	21120 Spindles

Sr. No.	Name / Address of unit	Phone No. / Website	Industry	Estb. Year	Investment (Th.Rs.)	Emp	Product	Annual Installed Capacity
149	Fatima Enterprises Limited (Textile) 4 Km. Mondka Road	066-2424101-3	Textile Spinning	1976	166286	454	Cotton Yarn	16320 Spindles
150	Fazal Cloth Mills Ltd. Fazal Nagar Jhang Road	2422216-8	Textile Spinning	1966	1756017	1295	Cotton Yarn	83076 Spindles
151	Hashir Textile Mills Ltd. (Unit 2) 3 Km., Jhang Road	2483568	Textile Spinning	2000	659403	1073	Cotton Yarn	43200 Spindles
152	Hashir Textile Mills Ltd. (Unit 3) 3 Km., Jhang Road	2422193	Textile Spinning	2000	327996	634	Cotton Yarn	23424 Spindles
153	Hashir Textile Mills Ltd. M.M. Road	2424195, 2423568	Textile Spinning	2002	108000	2550	Cotton Yarn	101240 Spindles
154	Imperial Textile Mills Ltd. M.M.Road	2490181-3	Textile Spinning	1987	64229	481	Pc Yarn	16464 Spindles
155	Indus Dyeing & Mfg. Co. Ltd. Jhang Road	2490201, www.indus_group.com	Textile Spinning	1989	563000	560	Cotton Yarn	18048 Spindles
156	Karachi Pioneer Enterprises M.M. Road Khanpur Bagga Sher	2490232	Textile Spinning	1992	3500	C	Cotton Yarn	200 Rotors
157	Khokhar Textile Mill Ltd. Chak 565 Tda, Dd Panah Road Chowk Sarwar Shaheed	2210805	Textile Spinning	1994	29300	465	Cotton Yarn	20160 Spindles
158	Mahmood Textile Mills Ltd. (Unit No.1, 2 & 3), Multan Road	2424804, www.mahmoodgroup.com	Textile Spinning	1970	701268	1894	Yarn / Cloth	65280 Spindles, 103 Looms

Sr. No.	Name / Address of unit	Phone No. / Website	Industry	Estb. Year	Investment (Th.Rs.)	Emp	Product	Annual Installed Capacity
159	Maqbool Textile Mills Ltd. M.M.Road, Chowk Sarwar Shaheed Kot Adu	0662-210066, www.maqbooltexas.com	Textile Spinning	1989	135828	572	Cotton Yarn	18672 Spindles
160	Sun Rays Textile Mills Ltd. Khan Pur Shumali Mm Road	2490201-5, www.indusgroup.com	Textile Spinning	1991	772000	680	Cotton Yarn	33020 Spindles
161	Tata Textile Mills Ltd 10Th Km M.M. Road	2490192-3, www.tatatex.com	Textile Spinning	1987	150650	1126	Cotton Yarn	44400 Spindles
162	Zakariya Enterprises, 5-Km Jhang Road	2427314-5	Vegetable Ghee And Cooking Oil	1996	25000	C	Vegetable Ghee	1800 M.Tons

Source: Directorate of Industries, Punjab

LIST OF CONTACT NUMBERS

Directorate of Industries Punjab

Director Industries, Punjab	Tel: +92 (42)-99211520-1 Fax: +92 (42)-99211522 dipunjab@gmail.com
Additional Director Industries	Tel: +92 (42)-99211531 +92 (42)-99212752 Fax: +92 (42)-99212753
Joint Director (Development)	Tel: +92 (42)-99211526
Senior Economist	Tel: +92 (42)-99211533
Staff Economist	Tel: +92 (42)-99211534
Deputy Director (Admin)	Tel: +92 (42)-99211528
Deputy Director (Development)	Tel: +92 (42)-99211528
Deputy Director (Planning)	Tel: +92 (42)-99211530
Assistant Director (Admin)	Tel: +92 (42)-99211529
Assistant Director (Planning)	Tel: +92 (42)-99211530
Assistant Director (Statistics)	Tel: +92 (42)-99211524
Assistant Registrar	Tel: +92 (42)-99211523
Librarian	Tel: +92 (42)-99213010
District Officer (E&IP), Muzaffargarh	Tel: +92 (66)-9200370

Other Relevant Departments

Department	Contact
Secretary, Industries, Commerce & Investment Department, Govt. of the Punjab	Tel: +92 (42) 99210534-5 Fax: +92 (42) 99210536
Punjab Board of Investment & Trade (PBIT)	Tel: +92 (42) 99205201 info@pbit.gov.pk
Small & Medium Enterprises Development Authority (SMEDA)	Tel: +92(42)-111-111-456 Fax: +92 (42) 36304926-7 info@smeda.org.pk
Punjab Industrial Estates Development and Management Company (PIEDMC)	Tel: +92 (42) 35297203-6 Fax: +92 (42) 35297207 info@pie.com.pk
Punjab Small Industries Corporation (PSIC)	Tel: +92 (42) 99200453

BIBLIOGRAPHY

- Punjab Development Statistics 2011, Bureau of Statistics, Government of the Punjab
- The Urban Unit, Planning & Development Department, Government of the Punjab.
- Technical Education and Vocational Training Authority
- Chief Inspector of Boilers, Directorate of Industries, Punjab
- Directorate of Agriculture, Crop Reporting Service, Punjab
- Chief Conservator of Forest Planning, Monitoring and Evaluation, Punjab
- Directorate General (Ext), Livestock & Dairy Development Punjab
- Directorate General Mines & Minerals, Punjab
- Punjab Small Industries Corporation
- Punjab Industrial Estates Development and Management Company
- Faisalabad Industrial Estates Development and Management Company
- Industries, Commerce & Investment Department, Government of the Punjab
- District Officers (Enterprise & Investment Promotion) as well as District Administration
- Export Processing Zones Authority
- Board of Investment, Government of Pakistan
- Website of Stat Bank of Pakistan
- Ministry of Commerce, Govt. of Pakistan
- Directory of Industrial Establishments Punjab, Directorate of Industries, Punjab

