

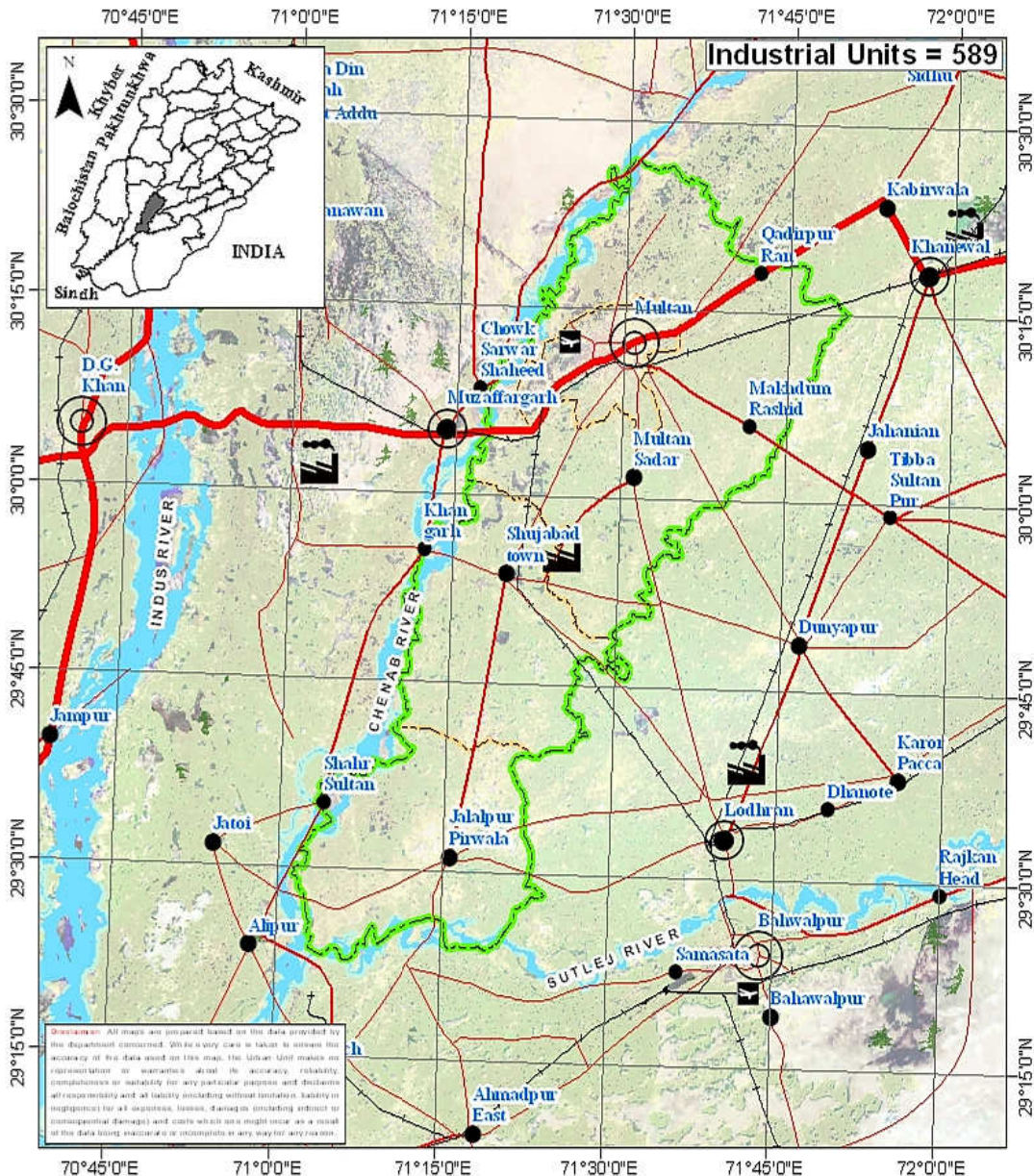
District Pre-Investment Study - 2012

Multan



Directorate of Industries, Punjab
Poonch House, Multan Road, Lahore.

District Multan



Director's Message

After spending past two years in Directorate of Industries, Punjab, I feel very privileged to be writing this message as Director Industries, Punjab.



This is the time we publish the 7th edition of the District Pre-Investment Studies of 36 Districts of Punjab, which has now become synonymous with our commitment to helping Industrialists, new entrepreneurs as well as Researchers. As Director Industries Punjab, I have seen much change, like:

- Relocation plan for the industrial units located within residential areas to industrial estates / positive areas declared by the District Governments.
- Adaptation of Boilers & Pressure Vessels Ordinance 2002.
- Conduct of Census of Manufacturing Industries.
- A scheme "Improvement and Up-gradation of Boilers Inspection Wing" has been approved by the Planning & Development Department, Government of the Punjab with the cost of Rs.10 Million.
- A Scheme "Sports Goods and Material Testing Laboratory" is under process in Planning & Development Department, Government of the Punjab. The estimated cost of the scheme is Rs.450 Million.
- The proposal for Capacity Building of Directorate of Industries Punjab is under process in Industries, Commerce & Investment Department, Government of the Punjab with the estimated cost of Rs.109.75 Million.
- We launch our website www.doi.pitb.gov.pk.

Looking ahead, we are focused on accelerating the execution of growth and promote industrial investment in the province. I am incredibly excited about this and truly believe the best of time for industrial investment is yet to come, Insha Allah.

(Muhammad Siddique Sheikh)
Director Industries, Punjab

Preface

Pre-investment studies for the districts in the Punjab were first published by the Directorate of Industries and Mineral Development, Punjab in the year 1979, with the prime objective of providing data which might interest private entrepreneurs and the framers of the Provincial and National Strategies in the industrial sector.

The second, third, fourth, fifth and sixth series of Pre-investment Studies for all districts of Punjab were published in 1983, 1992, 2002, 2006 and 2009 respectively. The present edition is seventh in the series.

This study basically updates the information contained in sixth series of district pre-investment studies. Efforts have been made to provide latest information collected through published sources, offices of the respective Government Departments/Agencies and District Offices of Industries Department. Quality addition of Industrial Policy Framework, recently promulgated Special Economic Zone Act 2012, Strategic Trade Policy Framework (2012-15) and Digital Maps by Urban Unit has improved these studies significantly.

The information has been updated in respect of population, manpower, production of agriculture crops, fruits, vegetables, livestock, forest resources, ores/minerals, infrastructural facilities such as technical/vocational training facilities, communication net-work, sub-soil water quality/effluent disposal

facilities, power/gas supply, tele-communication facilities, industrial estates, dry ports, industrial financing facilities, loaning scheme of PSIC, industrial policy, investment policy, fiscal incentives, Special Economic Zone Act 2012 and Strategic Trade Policy Framework (2012-15) etc. New policy measures regarding declaration of negative and specified positive areas have also been incorporated.

The study also includes information regarding existing industrial pattern, industry wise installed capacities and details regarding existing major industrial units in each district.

Effort has been made to identify various industries considering the availability of raw materials, skilled labour, linkage between industrial units and local/national/international demand. The suggested industries are, however, merely of indicative nature and it is advisable that prospective investors should conduct detailed feasibility report before making final decision for investment.

It is worthwhile to mention that industrial sector in Punjab has grown gradually from 6,223 industrial units in 1975 to 17,857 industrial undertakings in 2010. Sectoral growth has also been registered, resulting in substantial value addition. Value addition chain can be maximized by processing the agricultural industrial waste like rice husk, cotton stock, maize and corn cob. Herbal products is another untapped area. Live Stock, Dairy Development and poultry are fast growing sectors. Processing of food products can fetch handsome dividends. Currently information technology sector is growing by 39% annually in Pakistan. Fashion

industry is also developing rapidly. Similarly, chemical sector has lot to offer by utilizing the available mineral resources as raw material.

Issue of energy shortage can be addressed by dealing with power generation as an industry. Local as well as foreign investors have golden opportunity to set up power generation stations based on coal and other alternate fuels, under the captive power plants policy allowed in the newly promulgated SEZ Act, 2012. Punjab offers very good opportunity to the local as well as foreign investors to set up small, medium and heavy industries in variety of sectors. It has a growing market of over 90 million consumers, abundant manpower / labour force and cheap raw material with reasonably controlled law & order.

The Industries, Commerce & Investment Department has sufficient institutional frame work of attached and autonomous bodies to look after the industrial issues. Directorate of Industries, Small Industries Corporation (PSIC), Board of Investment (PBIT), Punjab Industrial Estates Development and Management Company (PIEDMC), Faisalabad Industrial Estates Development and Management Company (FIEDMC) have blend of professionals from the public as well as private sector. These legal entities are working in close coordination with the Chambers of Commerce and Industries systematically to promote industrialization and trade.

Development schemes regarding establishment of Industrial Resource Centre at the Directorate of Industries, setting up Sports & Material Testing Lab at EPZ, Sambrial and Industrial Safety Institute are under consideration with the Planning and Development

Department. Completion of these schemes will definitely help in promotion of industrialization process with enhanced industrial safety.

I must record my appreciation to Mr. Muhammad Akram Awan, Senior Economist, who effectively planned, coordinated and provided the guidance to his team members for completion of this study. Credit also goes to Mr. Muhammad Jamil Chishty, Staff Economist for his dedicated support rendered in the completion process of this study and Mr. Waseem Haider, Stenographer, for his tireless typing and composition work on computer.

I am grateful to all the District Officers, Enterprise & Investment Promotion who provided the relevant information of their respective districts for incorporating in pre-investment studies. I am also thankful to various Provincial Departments for supplying the required data to the Directorate of Industries. My special thanks are due to Dr. Nasir Javed, Project Director, Urban Unit for the provision of digital maps and the Punjab Printing Press.

Any suggestion for the improvement of the study will be welcomed.

Dec. 31, 2012

(Muhammad Siddique Sheikh)
Director Industries, Punjab

Contents

Section	Page
District at a Glance	1
1. Geographical Conditions	3
1.1 Brief Description of the District	3
1.2 Climate and General Soil Conditions	3
2. Man-Power	5
2.1 Total Population of the District	5
2.2 Man-Power Availability	6
2.3 Traditional Crafts	10
2.4 Geographical Indications	10
3. Natural Resources	13
3.1 Agriculture	13
a) Main Crops	13
b) Main Fruits	14
c) Main Vegetables	14
3.2 Forests	15
a) Location of Forests and Area under Afforestation	15
b) Production of Timber and Fire-wood	16
3.3 Livestock Population	16
a) Animal Population	16
b) Poultry Population	17
c) Availability of Hides/Skins & Slaughter House Wastes	17
d) Production of Wool	17
3.4 Ores and Minerals	18

4. Infrastructural Facilities	19
4.1 Communication Network	19
a) Road Links	19
b) Rail Links	19
4.2 General Quality and Availability of Sub Soil Water	19
4.3 Effluent Disposal Facilities	19
4.4 Power Supply	20
4.5 Natural Gas Availability	20
4.6 Telecommunication Facilities	20
4.7 Social Infrastructural Facilities	20
4.8 Industrial Estates	21
4.9 Dry Port	22
4.10 Industrial Policy	23
4.11 Declaration of Negative Areas	28
4.12 Declaration of Positive Areas	29
4.13 Incentives for Investors to set a unit in EPZs	30
4.14 Pakistan's Investment Policy – Key Features	33
4.15 Industrial Financing Facilities	35
4.16 Salient Features of Loaning Scheme of PSIC	38
4.17 Salient Features of the SEZ Bill 2012	40
4.18 Strategic Trade Policy Frame Work (2012-2015)	42
5. Existing Pattern of Industrial Development	47
5.1 Description of Existing Industry	47
6. Future Industrial Potential	51
6.1 Agriculture	51
6.2 Livestock	52
6.3 Industry	53
6.4 Demand Based Industries	53
6.5 List of Identified Projects	54

Annex	Page
Directory of Industrial Establishment	57
List of Contact Nos.	121
Bibliography	123

DISTRICT AT A GLANCE

1	Population (000 Numbers)	:	4,060
2	Area (Square Kilometres)	:	3,720
3	Population Density (per sq. km.)	:	1,091
4	Tehsils / Towns	:	Bosan Town, Shah Rukn-e-Alam Town, Mumtazabad Town, Sher Shah Town, Shujabad Town, Jalalpur Pirwala Town and Cantonment
5	Main Crops	:	Wheat, Cotton and Sugarcane.
6	Main Fruits	:	Mango, Citrus and Guava.
7	Main Vegetables	:	Potato, Onion, Carrot and Cauliflower.
8	Forest Resources (Area in Acres)	:	1,071
9	Mineral Resources	:	Nil
10	Total Metalled Roads (KM)	:	1,972.92
11	No. of Grid Stations	:	13
12	No. of Telephone Exchanges	:	32
13	Number of Industrial Units (Large Medium and Some Small Selected Sectors)	:	589

- 14 Type of Industrial Units : Agricultural Implements, Auto Parts, Beverage, Bakery Products, Chemical, Chip/Straw Board, Cold Storage, Cotton Ginning & Pressing, Cotton Waste, Doubling of Yarn, Drugs & Pharmaceutical, Embroidery, Fertilizer, Flour Mills, Fruit Juices, Foundry Products, Glass & Glass Products, Glue, Hatchery, Hosiery Products, Industrial Machinery, Industrial /Burn Gases, Paper & Paper Board, Paper Cone, Pesticides & Insecticides, Packages, Poultry Feed, Rice Mills, Sizing of Yarn, Solvent Oil Extraction, Soap & Detergent, Tannery, Textile Processing, Textile Spinning, Textile Weaving (Mill Sector), Towel Industry, Vegetable Ghee & Cooking Oil, Wool Scouring and Woollen Textile Spinning /Weaving

CHAPTER - I

GEOGRAPHICAL CONDITIONS

1.1 BRIEF DESCRIPTION OF THE DISTRICT

District Multan is surrounded by the district of Khanewal on the North and North East, Vehari district on East and Lodhran district on South. The river Chenab passes on its Western side and across which lies district Muzaffargarh.

District Multan is spread over an area of 3,720 square Kilometres and comprises the towns of:

- i. Bosan Town
- ii. Shah Ruken-e-Alam Town
- iii. Mumtazabad Town
- iv. Sher Shah Town
- v. Shujabad Town
- vi. Jalalpur Pirwala Town

1.2 CLIMATE AND GENERAL SOIL CONDITIONS

District Multan has an extreme climate. The extreme temperature of Multan in summer is 49°C whereas 1°C in winter. The average rainfall is 127 mm. The land of the district is plain and very fertile. However, the portions of tehsils of Multan and Shujabad close to the river Chenab are flooded during monsoons season.

CHAPTER - II

MAN POWER

2.1 TOTAL POPULATION OF THE DISTRICT

According to Punjab Development Statistics 2011, total estimated population of Multan district is 4,060 thousands persons out of which 2111 thousands are males and 1,949 thousands are females. Density of population in the district is 1,091 persons per square Kilometre.

Tehsil wise distribution of Urban and Rural population is given in Table-1

TABLE-1

Town-Wise Distribution of Urban & Rural Population

Town	Population (Thousand Nos.)		
	Urban	Rural	Total
Bosan Town	314	375	689
Shah Ruken-e-Alam Town	428	377	805
Mumtazabad Town	411	343	754
Sher Shah Town	378	351	729
Shujabad Town	64	484	548
Jalalpur Pirwala Town	32	426	458
Cantonment	77	0	77
Total	1704	2356	4060

Source: Punjab Development Statistics, 2011

2.2 MAN POWER AVAILABILITY

As regards availability of skilled labour, there are 18 technical / commercial / vocational institutions (12 for men, 6 for women) imparting training in various trades e.g. commerce, hand / machine embroidery, carpet weaving, carpentry, mechanical, civil, chemical, electrical, welding, refrigeration & Air-Conditioning and engineering. In all about 7485 technicians/artisans/workers are trained every year. The details are given in Table-2.

TABLE - 2

Commercial and Technical Institutions

Sr #	Name & Description of Commercial / Technical Training Institutions	Types of Training Courses Offered	Duration of Course	Average No of Students Enrolled / Session
For Men				
1	Govt. College of Commerce, Qasim Pur Colony, Shahra-e-Rashid, Bahawalpur Road.	M. Com, B.Com, D.Com.	24 Months	1453
2	Govt. College of Commerce, Azmat Wasti Road, Multan Cantt	Certificate in computer application, B.Com, D.Com	24 Months	585

3	Govt. Institute of Commerce, Shujabad	B.Com, D.Com	24 Months	428
4	Govt. College of Technology, Qasim Pur Colony, Multan	B.Tech, B.Tech Hon, DAE chem./ Civil / Elec / Mech., Textile Weaving & Spinning, IT Diploma.	3 to 36 Months	2886
5	Pak German Institute of Cooperative Agriculture, Multan	Tractor and Auto Mechanic, Driving, DAE (Agri)	2 to 36 Months	205
6	Govt. Technical Training Centre (DMTC), Shujabad.	Auto Farm Machinery, Carpenter, Welder, Turner, Wireman	6 months	66
7	Govt. Technical Training Institute, Khanewal Road, Multan	Ref. & AC, Electrical, Auto Elec., Auto Mech., Draftsman Civil & Mech, Fitter, General Indl. Elec., Machinist, Welder, Plumber, IT Diploma.	3 to 24 Months	769

8	Govt. Technical Training Institute, Daulat Gate, Multan.	Draftsman Mech., Elect., Welder, Fitter General.	18 to 36 Months	125
9	Govt. Technical Training Institute, Jalalpur Pir Wala.	Draftsman Mech., Elect. Fitter General, IT, HVACR.	6 to 24 Months	125
10	Govt. Technical Training Centre (AMTS), Old Shujabad Road, Multan	Tractor Operator, Auto & Farm, Mechanic	6 months to 1 Year	45
11	Institute of Blue Pottery Development, Multan	Kashigari	6 Months	3
12	Govt. Technical Training Centre (DMTC), Jalalpur Pirwala	Carpenter, Welder, Auto & Farm, Machinery, Turner, Wireman	6 months	68
For Women				
13	Govt. College of Technology, Qasim Pur Colony, Multan	DAE (Electronics, Dress Designing & Making), Microsoft IT.	3 to 36 Months	215

14	Govt. Technical Training Institute, Shah Rukn-e-Alam, Multan	Computer Operator, Office Management Dress Making, Beautician, Fabric Printing, Domestic Tailoring, Hair & Skin Care, Spoken English.	6 to 12 Months	196
15	Govt. Vocational Training Institute (RMGTC), 19-A Shah Rukan-e-Alam, Multan	Dress Making & Designing	6 to 12 Months	31
16	Govt. Vocational Training Institute, Near Degree College, Shujabad	Vocational Certificate, Vocational Diploma, Domestic Tailoring, Beautician, Fabric Printing.	6 to 24 Months	91
17	Govt. Vocational Training Institute, Farooq Pura Chowk, Old Shujabad Rod, Multan (New)	Beautician, Vocational Certificate, Vocational Diploma	6 to 24 Months	75

18	Govt. Vocational Training Institute, Qasim Pure Colony, Multan (Old)	Beautician, Vocational Certificate, Vocational Diploma, Tailoring, Wood Work, Fabric Printing.	6 to 24 Months	119
----	--	--	----------------	-----

Source: TEVTA

2.3 TRADITIONAL CRAFTS

Multan is famous for its elegant ivory bangles, blue pottery and tiles. Besides, camel skin goods, carpet weaving, block printing and embroidery are also important traditional crafts. These traditional crafts are also a source of foreign exchange earnings. The families engaged in these traditional crafts are mainly concentrated in Multan city, Karor Pacca and Shujabad. Basket and mat making from leaves of date trees is also a flourishing craft and is practiced at Shujabad where date trees are found in abundance. Approximately 4000 artisans are earning their livelihood through these traditional crafts.

2.4 GEOGRAPHICAL INDICATIONS

The Project Director (Geographical Indications), Industries, Commerce & Investment Department, Government of the Punjab has identified the

following Important Geographical Indications in the district:

- Mango (Chonsa, Anwar Ratol & Dosahri)
- Multani Sohan Halwa
- Kashi Gari (Blue Pottery)
- Multani Khussa
- Camel Skin Lamps

CHAPTER - III

NATURAL RESOURCES

3.1 AGRICULTURE

a) Main Crops

Wheat, Cotton and Sugarcane are the main crops grown in the district. Production of these crops during the period 2008-09 to 2010-11 is given in Table - 3.

TABLE-3

**Production of Main Crops
(2008-09 to 2010-11)**

Crop	Production (Th. M.Tons)		
	2008-09	2009-10	2010-11
Wheat	590.27	520.27	520.87
Cotton (000 Bales)	670.77	617.26	611.02
Sugarcane	121.49	112.35	140.56

Source: Directorate of Agriculture, Crop Reporting Service, Punjab

Besides, Rice, Maize, Jawar, Tobacco, Bajra, Moong, Mash, Masoor and Oil Seed such as Rape / Mustard and Sun Flower are also grown in minor quantities in the district.

b) Main Fruits

Mango, Citrus and Guava are main fruits grown in the district. Production of these fruits during the period 2008-09 to 2010-11 is given in Table - 4

TABLE-4

Production of Main Fruits
(2008-09 to 2010-11)

Fruit	Production (M.Tons)		
	2008-09	2009-10	2010-11
Mango	393028	440818	445431
Citrus	50183	55238	55956
Guava	5690	5587	5556

Source: Directorate of Agriculture, Crop Reporting Service, Punjab

Besides, Pomegranate, Dates, Jaman, Pears, Phalsa and Banana are also grown in minor quantity in the district.

c) Main Vegetables

Potato, Onion, Carrot and Cauliflower are main vegetables grown in the district. Production of these vegetables during the period 2008-09 to 2010-11 is given in Table - 5

TABLE-5

**Production of Main Vegetables
(2008-09 to 2010-11)**

Vegetable	Production (M.Tons)		
	2008-09	2009-10	2010-11
Potato	13505	13851	13245
Onion	19366	16740	12636
Carrot	6076	5858	6318
Cauliflower	6162	6231	6282

Source: Directorate of Agriculture, Crop Reporting Service, Punjab

Besides, Bottle Gourd, Peas, Ladyfinger, Turnip, Garlic, Tomato and Chillies are also grown in the district in minor quantities.

3.2 FORESTS

a) Location of Forests and Area under Afforestation

An area of 1,071 Acres is under forests in the district, but there is linear plantation of 1,127.2 Km alongside the roads/rails/canals in the district. Trees grown in the area are Kikar, Shisham, Frash and Millbury, etc.

b) Production of Timber and Firewood

The production of Timber and Fire-Wood in the district during the period 2008-09 to 2010-11 is given in Table 6.

TABLE-6

**Production of Timber & Firewood
(2008-09 to 2010-11)**

Year	Production (Cubic Meter)	
	Timber	Firewood
2008-09	8242.52	-
2009-10	15917.3	-
2010-11	2611.97	-

Source: Forestry, Wildlife and Fisheries Department

3.3 LIVESTOCK POPULATION

a) Animal Population

The animal population of the district is given in Table - 7.

TABLE - 7

ANIMAL POPULATION

Animals	Population (Th Heads)
Cattle	603
Buffaloes	484
Sheep	85
Goats	682

Source: Livestock & Dairy Development Department.

b) Poultry Population

As per Punjab Development Statistics 2011, there are 991 broiler and 107 layer poultry farms in the district Multan having rearing capacity of 28,504 and 922 thousand birds respectively. There are also 4 breeding farms having rearing capacity of 215 thousand birds.

c) Availability of Hides / Skins and Slaughter House Wastes

As per Punjab Development Statistics 2011, 15,69,200 animals were slaughtered in recognized / un-recognized slaughter houses in the district during the year 2009-10, which is a reasonable estimate of the availability of hides and skins in the district.

The availability of slaughter house by - products is estimated as under:-

Blood	583.74 M.Tons
Bones	2736.68 M.Tons
Tallow	513.12 M.Tons

d) Production of Wool

The sheep population of 85 thousand heads in the district is expected to yield about 85 M.Tons of coarse wool annually.

3.4 ORES AND MINERALS

There is no major mineral in the district.

CHAPTER - IV

INFRASTRUCTURAL FACILITIES

4.1 COMMUNICATION NETWORK

a) Road Links

The district has a total metalled road-length of 1972.92 Kilometres. The District is linked with Khanewal, Lodhran and Muzaffargarh districts through metalled road.

b) Rail Links

The main Peshawar - Karachi railway line passes through Multan district. The district is linked with Khanewal, Lodhran and Muzaffargarh Districts through railway network.

4.2 GENERAL QUALITY AND AVAILABILITY OF SUB-SOIL WATER

Under ground water resources are adequate throughout the district. The sub soil water is sweet throughout the district and suitable for industrial purposes.

4.3 EFFLUENT DISPOSAL FACILITIES

There is no mentionable nullah available in the district. However, effluent of the industry can be

disposed off in the two rivers namely Chenab and Sutlej after pre-treatment to remove harmful ingredients and with prior written permission from Irrigation and Power Department, Government of the Punjab.

4.4 POWER SUPPLY

There are 13 grid stations in the district ranging in capacity from 66 KV to 132 KV.

4.5 NATURAL GAS AVAILABILITY

Natural gas is available in the district.

4.6 TELE-COMMUNICATION FACILITIES

There are 32 telephone exchanges operating in the district, ranging in capacities from 50 lines to 32000 lines. Cellular phone services are available in the district.

4.7 SOCIAL INFRA-STRUCTURAL FACILITIES

Social infra-structural facilities available in the district are given in Table - 8.

TABLE - 8

SOCIAL INFRA-STRUCTURAL FACILITIES

Town	Primary / Middle / high / higher secondary School	College	Hospital	Police station	Railway stations	Post office	Banks
Bosan Town	253	5	19	4	0	5	211
Shah Rukn-e-Alam Town	241	5	12	8	1	3	
Mumtazabad Town	252	5	15	8	3	5	
Sher Shah Town	269	0	9	6	3	3	
Shujabad Town	347	2	21	3	5	5	
Jalapur Pirwala Town	293	2	17	2	1	5	
Cantt.	0	3	0	0	0	0	
Total	1655	22	93	31	13	26	

Source: Punjab Development Statistics 2011 / Respective District Offices.

Besides, according to Higher Education Commission Bahauddin Zikriya University and Nishter Medical College are in the public sector.

4.8 INDUSTRIAL ESTATE

There is one Industrial Estate in the district. The detail regarding the size and number of plots

already, allotted and those available for allotment is given in Table-9.

TABLE - 9

SIZES AND AVAILABILITY OF PLOTS IN THE INDUSTRIAL ESTATE

Name of Industrial Estate	Size of Plots (Acres)	Total No. of Plots	Allotted Plots	Vacant Plots
Industrial Estate, Multan. Phase-I	10 Acre	35	35	Nil
	5 Acre	20	20	Nil
	4 Acre	17	17	Nil
	3 Acre	10	10	Nil
	2 Acre	8	8	Nil
	1 Acre	10	10	Nil
Industrial Estate, Multan. Phase-II	8 Acre	8	7	1
	4 Acre	16	7	9
	2 Acre	48	14	34
	1 Acre	126	59	67
	0.5 Acre	151	22	129

Source: Punjab Industrial Estates Development and Management Company

4.9 DRY PORT

Multan Dry Port Trust handles imports and exports of various items. The export items are cotton yarn, grey fabrics, shoes/leather products, textile made ups, garments, bed sheets, etc.

The import items are high speed diesel oil, CKD kits for tractors, RBD palm oil, textile machinery / parts, chemicals, auto spare parts, vehicles, toys etc.

The details of goods handled by Multan Dry Port Trust during the period 2008-09 to 2010-11 is given in Table-10.

TABLE - 10

DETAILS OF GOODS HANDLED BY DRY PORT

(Million Rs.)

YEAR	IMPORT	EXPORT
2008-09	20703.170	10715.597
2009-10	8211.140	13505.423
2010-11	9013.910	13881.024

Source: Multan Dry Port.

4.10 INDUSTRIAL POLICY

- Foreign investors are permitted to hold 100% of the equity of industrial projects without any permission of the Government.
- No prior Government sanction is required for establishment of an industry outside Ex-Municipal Territorial Limits of Town Committees / Municipal Corporation irrespective of its cost and size except the following covered under schedule 'C':-

- a. Arms & Ammunition.
 - b. Security Printing Currency & Mint.
 - c. High Explosives.
 - d. Radio Active Substances.
 - e. Alcoholic Beverages or Liquors.
1. No industrial unit mentioned in Schedule-A of the notification No. AEA-III-4-3-9/91, dated 30.09.2002 or industrial unit exceeding a total cost of Rs. 100.00 million shall be set up within 10 miles (16 Kms) of international border:

List of Manufacturing Industries

- a) Basic Metal Industry.
- b) Petro-Chemical Industries (Excluding Products Industries).
- c) Large size Machine Tool Factories (Limit of Investment to be determined).
- d) Heavy Foundry Works.
- e) Heavy Electric Complexes.
- f) Heavy Mechanical Complexes.
- g) Electronics Industries.
- h) Major Vehicle Assembly Plants.
- i) Ordnance Factories.
- j) Explosives, Nitric acid and Sulphuric acid plants.
- k) Vehicular Tires and Tubes Industries.
- l) Locomotives and Railway Carriage manufacturing plants.
- m) Government Mint.

- n) Security Printing Press involved in whole time printing of sensitive documents / currency notes.
 - o) Manufacture of optical glass and optics.
 - p) Nickel cadmium battery industries.
 - q) Nuclear / Separation Plants.
 - r) Large Power Generating Stations.
 - s) Large oil Storage units.
 - t) Oil refineries.
2. No industrial unit shall be set up in areas affected by flood flowing transversely in the strip of one mile of either side across the Grand Trunk Road from Shahdara Town to Muridke Town, without prior permission of the Provincial Government.
3. According to the notification No. AEA-III-3-5/2003 (Vol-III), dated 06.12.2006, “no new sugar mill shall be setup and no enlargement in capacity of the existing sugar mills is allowed in the Province”.
4. Each district Government may declare “negative area” for industry. Such “negative area” be determined by a District Committee after consultation with all stake-holders in light of general policy guidelines issued by the Industries, Commerce & Investment Department and exemptions allowed under Schedule ‘B’ of this Notification as under:

List of Service Industries

- a) Furniture (excluding Band Saw) and also excluding storing Timber / Wood.
- b) Tailoring/ Readymade garments.
- c) Laundry / Dry Cleaning.
- d) Bakery (excluding confectionery).
- e) Syrups (excluding squashes)
- f) Cosmetics.
- g) Service workshop.
- h) Cereal Products like vermicilles.
- i) Candles making.
- j) Printing and Packaging.
- k) Hand loom carpet weaving.
- l) Hotels.
- m) Bidi manufacturing.
- n) Handmade shoes / shoe repairing workshop.
- o) Spooling and thread balls.
- p) Small Hosiery units employing not more than 10 workers.
- q) Atta Chakkies.
- r) Installation of Chaff cutters.
- s) Cotton Grading.
- t) Other small industrial undertakings which do not fall under the Sixth schedule of the Punjab Local Government Ordinance, 2001.

“Other small industrial undertakings” would mean an industrial undertaking in which the total fixed assets (including the cost of land) do not exceed Rs.1.0 million (Rupees one million).

5. No industrial unit mentioned in Schedule 'C' of this Notification shall be set up anywhere in the Punjab without prior approval of the Government.
6. The Government reserves the right to refuse establishment / enhancement of any industrial undertaking which is in contravention of the public interest, ecology or any other law / rules for the time being in force.
7. The Government may relax any of the provisions of this notification in case of a particular unit or industry or class of units or industries.
8. NOC from Environment Protection Department, Govt. of the Punjab is required for setting up new Industries.
 - Tourism has been given the status of industry in accordance with Ministry of Industries & Production Circular No. 1-129/99-INV-IV dated 2nd August 1999.
 - The Housing and Construction Sector has also been declared as industry (Finance Division Notification No. 10(10)/IF-11/98, dated 07.04.1999 and 04.06.1999.
 - In accordance with Government notification No. 3(2)/97-INV-IV dated 05.05.1997,

Computer Software and Information Technology (IT) have been declared as Industry.

4.11 DECLARATION OF NEGATIVE AREAS

In pursuance of the Clause 4 of the Location Policy notified on 30-09-2002, by the Industries, Commerce & Investment Department, Government of the Punjab, the District Govt. Multan has declared the following negative areas:-

Tehsil Multan

- i) Total Cantonment area.
- ii) Bosan Road till Baha-ud-Din Zakariya University and 2 KM on each side of the road.
- iii) Northern By-pass, Bosan Road, Khanewal Road complete.
- iv) Khanewal Road up to Karpal Minor and 2 KM on each side of the road
- v) Vehari Road 5 KM from Cricket Stadium towards Vehari and 2 KM on each side of the road.
- vi) Bahawalpur Chowk, By-pass road right side towards Sher Shah till Sher Shah Chowk.
- vii) Bahawalpur Road till Larr and 1.5 KM on each side of the road.
- viii) Shujabad Road till Basti Labar More.
- ix) Sher Shah Road till Sher Shah Chowk complete.
- x) Suraj Miani road till River Chenab complete.
- xi) Nawabpur Road till Nawabpur complete

- xii) Dunyapur Road up to Chak 1-MR
- xiii) Budhla Sant Road upto Mouza Kotha wala

Other Tehsils/Town Committees

2 KM across the former Committee Limits and 2 KM deep on either side of road.

4.12 DECLARATION OF SPECIFIED POSITIVE AREAS

Vide the Finance Act, 2008, the Government of Pakistan has enacted a new section “23A” in the Income Tax Ordinance 2001. The Section “23A” is reproduced below:-

“First year allowance.- (1) Plant, Machinery and equipment installed by any industrial undertaking setup in specified rural and under developed areas, and owned and managed by a company shall be allowed first year allowance in lieu of initial allowance under Section 23 at the rate specified in Part II of the third schedule against the cost of the “eligible depreciable assets” put to use after July 1st, 2008.

(2) The provision of Section 23 except sub-sections (1) and (2), thereof, shall mutatis mutandis apply.

The Federal Government may notify “Specified areas” for the purpose of sub-section(1)”

In pursuance of the above mentioned notification District Government Multan has identified and approved the following specified positive areas for setting up industrial undertakings:-

- i) From Baha-ud-Din Zakariya University to onward.
- ii) From Kirpal Pur Minor Khanewal Road to onward.
- iii) From Bahawalpur Chowk Bye-Pass to left side toward Sher shah till Sher Shah Chowk.
- iv) From outside Lar Bahawalpur Road to onward.
- v) From Labar More Shujabad Road to onward.
- vi) From Chak 1-MR Dunyapur Road to onward.
- vii) From Kothay Wala Bodhla Sant Road to onward.
- viii) From 5 KM Cricket Stadium Vehari Road to onward.
- ix) Outside old Municipal limits for Shujabad and Jalalpur Pirwala City.

4.13 INCENTIVES FOR INVESTORS TO SETUP A UNIT IN EPZs

- a) According to EPZs Authorities, following incentives are available in the Export Processing Zones

1. 100% ownership rights.
2. 100% repatriation of capital & profits.
3. No minimum or maximum limit for investment.
4. Duty free imports of machinery, equipment & material.
5. No sales tax on input goods including electricity & gas bills.
6. Obsolete/old machinery can be sold in domestic market of Pakistan after payment of applicable duties & taxes.
7. Freedom from national import restrictions.
8. Foreign exchange control regulation of Pakistan not applicable.
9. Defective goods/waste can be sold in domestic market after payment of applicable duties, maximum upto 3% of total value of export.
10. Duty free vehicle allowed under certain conditions. After 5 years of use, vehicles can be disposed off in domestic market on payment of duty on depreciated value.
11. Domestic market of Pakistan available on same conditions as for imports from other countries.
12. Units operating in EPZs can undertake sub-contracting for units of tariff area subject to payment of duty and taxes on value addition only.

13. Only EPZA is authorized to collect Presumptive tax at the time of export of goods which would be final tax liability.
 14. EPZ units allowed to supply goods to Custom manufacturing bonds.
 15. Production oriented labour laws to be solely regulated by the Authority.
 16. EPZ manufacturer will be treated at par with bonded manufacturers in tariff area for any future incentives to be announced for exporters.
 17. Relief from double taxation subject to bilateral agreement.
- b) Facilities to Investors for setting up a unit in EPZs of Pakistan.
1. One window service and simplified procedure.
 2. All infrastructural facilities like water, electricity, gas, telex, fax and telecommunication system are made available by EPZA.
 3. Skilled & un-skilled labour available in abundance.
 4. Sub-contracting without limit on variety and quantity is allowed outside the zone as well as within the zone.
 5. The garment manufacturing units located in Export Processing Zones are eligible to participate in auction of quotas.

6. GSP concessions given by various countries to imports from Pakistan are available to the manufacturers in the zone.
7. Peaceful, secure and environmentally protected / pollution free work area.
8. Inter-unit transfer of finished goods among exporting units allowed.

4.14 PAKISTAN'S INVESTMENT POLICY - KEY FEATURES

General

- The investment policy is liberal and business friendly as it has been designed in consultation with businessmen, investors and representative forums as well as the Multinational Companies (MNCs).
- It provides equal investment opportunities for both domestic and foreign investors.
- All economic sectors open for FDI (Foreign Direct Investment).
- 100% foreign equity allowed.
- No government sanction required.
- Foreign investment on repatriable basis is allowed in all economic sector including manufacturing, agriculture, services, infrastructure and social sectors.
- Foreign investment in Agriculture projects allowed on joint-venture basis by associating minimum local equity of 40%.
- Remittance of Royalty, Technical & Franchise Fee, Capital, Profits, Dividends allowed.

- Minimum foreign equity for non-manufacturing including services sector has been reduced from \$ 0.3 to \$ 0.15 million. In Agriculture, infrastructure and social sectors, it is \$ 0.3 million.

Tariff and Tax Incentives

- To keep Pakistan competitive in international tariff 5% customs duty has been allowed on import of plant and machinery which is not manufactured locally.
- Sales tax 0% across the board.
- 0% duty on import of raw material for export industry.
- 0% duty on import of agriculture machinery.
- Tax relief in shape of Initial Depreciation Allowance (IDA) has been provided as 50% of machinery cost across the board.
- Tax relief has also been provided for expansion and Balancing, Modernization & Replacement (BMR) in existing industries.

Policy Package of Pakistan

Policy Parameters	Mfg. Sector	Non-Manufacturing Sectors		
		Agriculture	Infrastructure & Social	Services including IT & Telecom Services
Govt. Permission	Not required except for specified industries*	Not required except specific licences from concerned agencies.		

Remittance of capital, profits, dividends, etc.	Allowed	Allowed		
Upper Limit of foreign equity allowed	100%	100%	100%	100%
Minimum Investment Amount (M \$)	No	0.3	0.3	0.15
Customs duty on import of PME**	5%	0%	5%	0-5%
Tax relief (IDA***, % of PME cost)	50%	50%		
Royalty & Technical Fee	No restriction for payment of royalty & technical fee.	Initial lump-sum up to \$100,000 Max Rate 5% of net sales - Initial period 5 years		

* Specified Industries:

- i) Arms and ammunitions
- ii) High Explosives
- iii) Radioactive substances
- iv) Security Printing
- v) Currency and mint

** PME = Plant, Machinery and Equipment

*** IDA = Initial Depreciation Allowance

4.15 INDUSTRIAL FINANCING FACILITIES

Following Financial Institutions in the country are providing various types of fixed investment

industrial financing in the foreign and local currency to the industrial sector for establishment of new industrial units as well as for Expansion, Balancing, Modernization and Replacement (BMR) of existing industrial units within the frame-work of industrial/financial policies of the Government of Pakistan.

- 1 AlBaraka Bank (Pakistan) Limited.
- 2 Allied Bank Limited.
- 3 Askari Bank Limited.
- 4 Bank Alfalah Limited.
- 5 Bank Al-Habib Limited.
- 6 Bank Islami Pakistan Limited.
- 7 Barclays Bank PLC.
- 8 Burj Bank Limited.
- 9 Citi Bank N.A.
- 10 Deutsche Bank A.G.
- 11 Dubai Islamic Bank Pakistan Limited.
- 12 Faysal Bank Limited.
- 13 First Women Bank Limited.
- 14 Habib Bank Limited.
- 15 Habib Metropolitan Bank Limited.
- 16 HSBC Bank Middle East Limited.
- 17 Industrial and Commercial Bank of China
- 18 Industrial Development Bank of Pakistan.
- 19 JS Bank Limited.
- 20 KASB Bank Limited.

- 21 MCB Bank Limited.
- 22 Meezan Bank Limited.
- 23 National Bank of Pakistan.
- 24 NIB Bank Limited.
- 25 Oman International Bank S.A.O.G.
- 26 S.M.E. Bank Limited.
- 27 Samba Bank Limited
- 28 Silk Bank Limited.
- 29 Sindh Bank Limited.
- 30 Soneri Bank Limited.
- 31 Standard Chartered Bank (Pakistan) Limited.
- 32 Summit Bank Limited
- 33 The Bank of Khyber
- 34 The Bank of Punjab
- 35 The Bank of Tokyo-Mitsubishi Limited.
- 36 The Punjab Provincial Cooperative Bank Limited.
- 37 United Bank Limited.
- 38 Zarai Taraqati Bank Limited.

Source: State Bank of Pakistan

List of Development Financial Institutions (DFIs)

- 1 Bankers Equity Limited.
- 2 House Building Finance Company Limited.
- 3 Pak Brunei Investment Company Limited

- 4 Pak-China Investment Company Limited.
- 5 Pak Oman Investment Company Limited.
- 6 PAIR Investment Company Limited.
- 7 Pakistan Kuwait Investment Company Limited.
- 8 Pak-Libya Holding Company Limited.
- 9 Saudi Pak Industrial & Agricultural Investment Company Limited.

Source: State Bank of Pakistan

Besides the financial institutions mentioned above a number of Leasing Companies, Modaraba Companies, Investment Banks are also providing financing facilities to the industrial sector. Punjab Small Industries Corporation also extends financial assistance to the small/cottage industrial units.

4.16 SALIENT FEATURES OF LOANING SCHEME OF PSIC

Punjab Small Industries Corporation (PSIC) is a body corporate enacted in 1973. One of core functions of PSIC is financial assistance programme for prospective entrepreneurs, skilled youth, artisans and craftsmen all over the Punjab. The priority sectors are as under:

- Service Industries.
- Agro / Agro Support Industries.
- Food Processing Industries.

- Export Oriented Industries.
- Import Substitution Industries.
- Information Technology (IT) Project.
- Handicraft Industry.
- Women Enterprises.

PSIC started credit assistance programme during 1984 and completed 13 schemes up till now. An amount of Rs. 4079 Million has been disbursed to 19,580 entrepreneurs in 36 Districts of Punjab with the recovery rate of 88% that indicates proper utilization of loans.

The maximum loan limit is Rs.3 Million with debit equity ratio of 60:40. The credit assistance facility available for new projects, BMR and Working Capital. The markup rate varies from 0% to 12%. The repayment period of loan is from 3 years to 6 years with grace period of 3 months to 6 months.

Recently, Government of Punjab has provided an amount of Rs. 2000 Million for disbursement through Service Provider Organization i.e. M/s Akhuwat to un-employed and skilled persons of PVTC, TEVTA, SANATZAR's of Social Welfare Department or other unemployed youth having good business plan.

Up till now, M/s Akhuwat has disbursed an amount of Rs. 1650.00 Million to 94,960 poor household in 33 vocations with average loan size of Rs. 17,382

in Punjab through its 142 offices in 30 districts of the Punjab.

To promote the traditional handicrafts in Punjab, PSIC has also launched dedicated credit assistance schemes for the craftsmen at subsidized markup rates. These craftsmen have also been provided marketing facilities through Pakistan Handicrafts Shops.

4.17 SALIENT FEATURES OF THE SEZ BILL 2012

The Law of SEZ has been made to meet the global challenges of competitiveness to attract FDI. The Law/bill will allow to create industrial clusters with liberal incentives, infrastructure, investor facilitation services to enhance productivity and reduce cost of doing business for economic development and poverty reduction. The Law further envisages to reduce processes through SEZ in Pakistan. The establishment of SEZs will attract both domestic as well as international investors. The SEZ would play a pivotal role in the economic development of Pakistan as has been witnessed in case of China, Malaysia, Thailand and other states.

It extends to the whole of Pakistan and overrides other laws (anything contrary);

- All SEZ whether Public, Public-Private or Private-Private to be governed under this Act;

- The Board of Approval (BOA) headed by the Prime Minister of Pakistan with the Minister for Finance as the Vice Chairman shall meet as frequently as required but not less than twice a year and decisions shall be taken by a majority of the total membership present and voting;
- SEZs will have exemption from customs duties & taxes for all Capital Goods imported into Pakistan for the development , operations and maintenance of a SEZ;
- Exemption from all taxes on income accruable in relation to the development and operations of the SEZ for a period of ten years, starting from the date of signing of the Development Agreement.
- Zone Enterprises have exemption from custom duties etc. on imports of Capital Goods;
- Exemption from taxes on income for a period of 10 years starting from the date the Development certifies that the Zone Enterprise has commenced commercial operations in the relevant SEZ;

There is no limit to the economic potential of Pakistan. The challenge is to create the enabling environment in which this can be realized. Special Economic zones bill is a step towards the economic stability in the country.

4.18 STRATEGIC TRADE POLICY FRAME WORK (2012-2015)

The government unveiled on 29 January, 2013 a medium term (2012-2015) Strategic Trade Policy Framework, setting a cumulative export target of \$95 billion for three years. The framework, the second announced by the federal government will be implemented with a funding of Rs. 26.14 billion. In the first year, Rs.5 billion will be spent on providing subsidies and support to identified sectors.

The focus of the policy is on promoting regional trade and regulatory efficiency, promoting agro-processed exports, increasing exports from less developed regions, revamping export promotion agencies, increasing green exports, enhancing role of women in exports and pursuing product and market development and diversification.

The salient features of the policy include institutional interventions, export development initiatives and regulatory amendments. The policy, offers cash assistance to 14 sectors along with 19 regulatory frameworks, including ban on products as a protective measure against environmental and health hazards. The new framework is designed to provide assistance only to the non-textile sectors.

Institutional Measures: The government will setup institutions like an Export-Import (Exim) Bank, Pakistan Land Port Authority; Leather Export Promotion Council and a Services Trade Development Council.

Export Development: Major initiatives in the Policy included allowing mark-up rate support of two per cent on prevailing LTFF for future import and purchase of machinery. An allocation of Rs.500 million has been proposed for schemes to be implemented this year. The total amount to be spent in three years is projected at Rs.3 billion. A mark-up support of 1.5% will be provided on export finance scheme (EFS) to selected sectors at a cost of Rs. 1.25 billion, including Rs. 200 million in 2012-2013.

The sectors for EFS support are fish and fish preparations, fruit and vegetables, spices, meat and meat preparations, carpets and rugs, sports goods, footwear, leather products, surgical goods, cutlery, onyx products, pharmaceuticals, electric fans, transport equipment, electrical machinery, specialized machinery, furniture, handicrafts and computer-related services.

An amount of Rs.14 billion will be given as adhoc relief at three per cent of FoB to offset the impact of higher cost of utilities for exporters in selected sectors. The measure will cost Rs.3bn this year. An amount of Rs.2 billion-Rs125 million will be

allocated for marketing development assistance for regional countries.

A Rs. 25 million allocation has been proposed for export promotion campaigns for agro-processed products; Rs. 400 million for encouraging opening of retail outlets; and Rs.400m for subsidizing 50% cost of plant and machinery for establishing processing plants for meat, fruits, vegetables, dates and olives in Azad Jammu and Kashmir, Baluchistan, Gilgit - Baltistan and Khyber Pakhtunkhwa.

An amount of Rs.30 million will be allocated for upgrading rice inspection laboratories, Rs. 20 million for subsidy at 100% of the prevailing mark-up rate for establishing mining and processing units in Khyber Pakhtunkhwa and Baluchistan.

Another Rs.20 million has been allocated for strengthening women's chamber of commerce and industry, Rs.32 million for setting up a resource management cell at the ministry of commerce, Rs.28 million for establishing leather export promotion council and Rs.70 million for services export development council.

Regulatory Measures

Unrestricted import of used motorized wheelchairs and five-year-old used or second-hand ambulances has been allowed. Two per cent of export proceeds will be allowed to manufacturers-cum-

exporters for duty-free import of accessories for value-addition for leather garments and made-ups. Import of non-hazardous plastic scrap has been allowed for industrial consumers for use as raw material. A ban has been imposed on import of plastic waste, hospital waste, used sewerage pipes and chemical containers.

Import of non-sterilized surgical needles and syringes will be restricted to industrial units, condition of Euro-II may be made applicable on import of all types of specialized vehicles, such as crane-mounted lorries, dump trucks and mixtures lorries. The import of used sprinkle lorries will be restricted to a maximum of five year old. All goods from banned list imported in commercial quality shall be allowed to re-export at importer/shipping lines cost. The imported substandard goods from the restricted list should be destroyed within a period of six months without offering any release.

Import of waste and scrape of tyres in completely shredded/ cut form will only be allowed to industrial consumers; domestic standards will equally apply to imported goods as well.

Construction engineering and electrical companies will be allowed to retain abroad the exported machinery to carry out work on export-cum-import basis with the condition that they will import the same on the conclusion of the contract against indemnity bond.

All exporters of edible products are to be registered and export of vegetable ghee and cooking oil will be allowed in packaging of up to 25kg to encourage value-addition.

Steps to contain Environmental & Health Hazards

- Ban on import of plastic waste/scrap-hospital waste, used sewerage pipes and chemical containers.
- Restricting import of non-sterilized surgical needles and syringes to industrial units.
- Only the more fuel efficient Euro-II category crane-mounted lorries, dump trucks, mixture lorries, etc, will be imported.
- Imported used tyres will only be allowed for industrial use.

Institutions to be Setup

- Export-Import Bank.
- Pakistan Land Port Authority.
- Leather Export Promotion Council.
- Service Trade Development Council.

CHAPTER - V

EXISTING PATTERN OF INDUSTRIAL DEVELOPMENT

5.1 DESCRIPTION OF EXISTING INDUSTRIES

There are about 589 large, medium and some small industrial units in the district. Industry-wise installed capacity of major industrial units is given in Table-11.

TABLE - 11

Industry-wise Installed Capacity

Sr. #	Industry	No. of units	Annual Installed Capacity
1	Auto Parts	7	1737 Th. Nos.
2	Agricultural Implements	14	2703 Nos.
3	Beverage	4	22200 Th. Crates
4	Bakery Products	5	1725 M Tons
5	Biscuits	8	3230 M Tons
6	Chemical	1	1800 M.Tons,
7	Chip/Straw Board	3	2300 Th.Sq ft.
8	Cold Storage	20	260 Th. Bags
9	Cotton Ginning & Pressing	127	604 Sawgins , 132 Press, 197 Expellers
10	Cement Products	1	50,000 Sq. Ft.
11	Cotton Waste	4	8 Machines
12	Cosmetics	1	40,000 Th. Tons
13	Drugs & Pharmaceutical	10	1484 Million Nos., 602 Th. Lit. 80 M.Tons
14	Doubling of Yarn	3	138 Machines

15	Embroidery	2	8 Machines
16	Fertilizer	1	92400 M.Tons Urea, 450000 M.Tons Can Urea, 304500 M.Tons NP
17	Flour Mills	52	6180 M.Tons/ Day
18	Fruit Juices	2	270000 Th. Crates, 72000 M. Tons.
19	Foundry Products	1	100 M. Tons
20	Glass & Glass Products	2	5500 Th.Nos.
21	Glue	1	1400 M. Tons.
22	Hosiery Products	6	2525 Th.Dozen
23	Hatchery	5	37650 Th. Nos.
24	Industrial /Burn Gases	8	36230 M.Tons CO ₂ , 60 M. Tons.O ₂
25	Industrial Machinery	7	23 G/P Machinery, 410 Ghee Plants, 10 Flour Mill Machinery, 10,000 Mechanical Eng. Services.
26	Light Engineering	6	1975000 Nos.
27	LPG Gas	1	50,000 Kg.
28	Lubricants	9	18480 Th. Lit.
29	Motor Pumps	2	960 Nos.
30	Paper & Paper Board	8	38300 M.Tons
31	Paper Cone	10	128600 Th. Nos.
32	Pesticides & Insecticides	4	4880 Th. Litres
33	Poultry Feed	7	143230 M.Tons
34	Paint & Varnishes	2	300 Th. Lit.
35	Packages	17	6880 Th. Boxes, 6500 M. Tons. Packing Material.
36	Plastic Products	6	6820 Th. Nos.
37	Rice Mills	84	121 Hullers, 10 Shellers

38	Ready Made Garments	5	580 Machines, 144 Power Looms
39	Sizing of Yarn	11	7460 M.Tons
40	Solvent Oil Extraction	11	342000 M.Tons
41	Soap & Detergent	14	35795 M. Tons.
42	Sodium Silicate	7	10700 M. Tons.
43	Surgical Cotton Bandages	1	595000 KGs.
44	Tannery	9	4589720 Sq. Ft., 1920000 KG.
45	Textile Processing	12	21400 Th. Meters, 500 M. Tons.
46	Textile Spinning	18	423712 Spindles, 3850 Rotors
47	Textile Weaving (Mill Sector)	24	2125 Looms
48	Towel Industries	4	282 Power Looms, 115 Machines
49	Vegetable Ghee & Cooking Oil	10	248900 M.Tons
50	Wool Scouring	4	3850 M.Tons, 25 Looms, 700 Spindles
51	Woollen Textile Spinning /Weaving	8	2636 Spindles, 1500 M.Tons, 5 Machines.

Source: District Officer (E&IP), Multan.

Note: For further details visit: www.doi.pitb.gov.pk

CHAPTER - VI

FUTURE INDUSTRIAL POTENTIAL

Keeping in view the availability of raw material, skilled labour, linkage between the industrial units, local / national / international demand, future industrial potential of district Multan is discussed hereunder:

It would, however, be kept in mind that though the above mentioned factors facilitate the success of any industrial unit, yet the entire success depends upon the investors / entrepreneurs and the capabilities of the personnel having the managerial control because any of these factors, if lacking is manageable. Therefore, it is advisable that detailed feasibility of industrial projects must be carried out before making final decision for investment.

6.1 AGRICULTURE

Main Crops and fruits of district Multan are Wheat, Cotton, Sugarcane, Mango, Guava and citrus. The average annual production of Wheat, Sugarcane, Mango, Citrus and Guava during the period 2008-09 to 2010-11 was 543.80, 124.80, 426.426, and 53.792 thousand M. Tons respectively and of cotton was 633 thousand bales. A variety of vegetables are also grown in the district (Chapter-3 Section 3.1).

There are 18 cotton textile spinning units, 52 flour mills, 2 fruit juice, 11 solvent oil extraction units, 10 vegetable ghee units and 127 cotton ginning/pressing and oil mills already operating in district Multan (Chapter-5).

In view of the availability of raw materials and existing agro-based industries, there still exists scope for additional textile spinning/ weaving/ processing, solvent oil extraction, glucose/starch and fruit concentrates unit.

6.2 LIVESTOCK

As per Punjab Development Statistics 2011, the population of cattle, buffaloes, sheep and goat was 603, 484, 85 and 682 thousand heads respectively. As regards poultry, there are 991 broiler, 107 layer and 4 breeding poultry farms having rearing capacity of 28504, 922 and 215 thousand birds respectively. The annual availability of hides and skins is estimated at 1569200 pieces (Chapter-3, Section 3.3).

There are 9 tanning units of various sizes already operating in the district.

In view of the above, there exists good prospect for milk processing/dairy products units, ice cream, animal/poultry feed, dairy farms, cattle/sheep/goat fattening farms, meat/poultry

processing unit, leather garments, leather footwear, etc.

6.3 INDUSTRY

In district Multan a variety of industrial units are operating including cotton / woollen textile, fruit juice / beverage, fertilizer and chemical, glass, pharmaceutical, vegetable ghee, tannery units and various types of engineering goods industries, etc.

In view of existing industries, there exists good cope for foundry and forging, steel re-rolling mills, galvanised iron pipes, nuts/bolts, machine tools, hand tools, auto parts, tanning chemicals, paints, pharmaceutical, glass ampoule, plastic products, tin making for packing of chemicals and vegetable ghee, lint cleaners for ginning factories.

6.4 DEMAND BASED INDUSTRIES

Multan district is the most industrially developed district among all the districts of southern Punjab. Therefore, in view of the national requirements and in particular of Southern Punjab, there exist very good scope for telephone/electric poles, insecticides/pesticides, motor tyres/tubes, fibre glass products, hospital furniture, collapsible tubes, cosmetics, household appliances, cutlery and utensils, dyes and pigments, ceramics, steel sanitary fittings, electrical accessories/fittings.

6.5 LIST OF IDENTIFIED PROJECTS

As per discussion given in section 6.1 to 6.4, the following industrial projects have been identified for investment in district Multan.

- Agriculture Waste / by products raw material based industries for maximization of value addition chain.
- Auto Parts
- Animal/Poultry Feed
- Ceramics
- Cosmetics
- Collapsible Tubes
- Cutlery and Utensils
- Cattle/Sheep/Goat Fattening Farms
- Dairy Farms
- Dyes and Pigments
- Electrical Accessories/Fittings
- Energy conservation / efficiency
- Fruit Concentrate
- Foundry and Forging
- Fibre Glass Products
- Glass Ampoule
- Glucose/Starch
- Galvanised Iron Pipes Hand Tools
- Hospital Furniture
- Household Appliances
- Ice-Cream
- Insecticides/Pesticides
- Leather Garments

- Leather Footwear
- Lint Cleaners for Ginning Factories
- Machine Tool
- Motor Tyres/Tubes
- Meat/Poultry Processing
- Milk Processing/Dairy Products
- Nuts/Bolts
- Paints
- Pharmaceutical
- Plastics Products
- Power generation through coal and other alternate fuels
- Power generation through bagasse
- Solvent Oil Extraction
- Steel Re-rolling Mills
- Steel Sanitary Fitting
- Tanning Chemicals
- Telephone/Electric Poles
- Textile Spinning/Weaving/Processing
- Tin-making for packing of vegetable ghee and chemicals
- Waste heat recovery systems

Directory of Industrial Establishments, Multan

Sr. No.	Name / Address of unit	Phone No. / Website	Industry	Estb. Year	Investment (Th.Rs.)	Emp	Product	Annual Installed Capacity
1	Agritec Industries (Pvt) Ltd 47 B/1 le	539125	Agricultural Implements	1994	5000	18	Agricultural Implements	500 Nos.
2	Azam Kay Zarai Aallat Jalalpur Road Adda Peer Ghaib Matotli More Shujabad		Agricultural Implements	2002	250	5	Agricultural Implements	50 Nos.
3	Bilal Mechanical Works Guchar Wali Pull Old Multan Road Shujabad		Agricultural Implements	2002	300	5	Agricultural Implements	60 Nos.
4	Data Kay Zarai Aallat Shujabad Road Jalalpur Pirwala		Agricultural Implements	2001	200	5	Agricultural Implements	50 Nos.
5	Faridia Kay Zarai Aallat Shujabad Road Jalalpur		Agricultural Implements	2000	180	5	Agricultural Implements	50 Nos.
6	Haider Agricultural Implements Jalalpur Road Matotli More Shujabad		Agricultural Implements	2003	200	5	Agricultural Implements	30 Nos.
7	Haq Nawaz Kay Zarai Aallat Adda Peer Ghaib Jalalpur Road Shujabad		Agricultural Implements	2000	250	5	Agricultural Implements	50 Nos.
8	Iqbal Kay Zarai Aallat Mouza Ganveen Pakki Pull Shujabad		Agricultural Implements	1996	200	5	Agricultural Implements	1600 Nos.

Sr. No.	Name / Address of unit	Phone No. / Website	Industry	Estb. Year	Investment (Th.Rs.)	Emp	Product	Annual Installed Capacity
9	Iqbal Mechanical Works Pull Guchar Wali Old Multan Road Shujabad		Agricultural Implements	2002	160	5	Agricultural Implements	23 Nos.
10	Jam Kay Zarai Aallat Khan Bela Road Jalalpur Pirwala		Agricultural Implements	1998	280	5	Agricultural Implements	50 Nos.
11	Malik Ashiq Arain Trolley Makers Old Shujabad Road	0333-6101197	Agricultural Implements	2003	350	5	Agricultural Implements	20 Nos.
12	Mallana Brothers Kay Zarai Aallat Mouza Ganaveen Makhdoom Jahanian More Shujabad		Agricultural Implements	2003	100	5	Agricultural Implements	50 Nos.
13	Rajab Sons Engineering Old Shujabad Road	4540864	Agricultural Implements	1986	8000	9	Agricultural Implements	150 Nos.
14	Zulfiqar Ali Trolley Makers Shershah Road Nadirabad Phatak		Agricultural Implements	2001	400	5	Agricultural Implements	20 Nos.
15	Ali Raja Industries, Industrial Estate	6537941	Auto Parts	2002	10000	30	Auto Parts	10 Th.Nos.
16	Chicago Metal Works 8 C/1-B Industrial Estate	6538581	Auto Parts	1996	2000	14	Auto Parts	6 Th.Nos.

Sr. No.	Name / Address of unit	Phone No. / Website	Industry	Estb. Year	Investment (Th.Rs.)	Emp	Product	Annual Installed Capacity
17	M. Shah Muhammad & Sons (Pvt) Ltd 8 C/ii Industrial Estate	6539571-2	Auto Parts	1979	15527	26	Auto Parts	11 Th.Nos.
18	M. Shah Muhammad & Sons (Pvt) Ltd., 14-Km Vehari Road	4554481	Auto Parts	1972	5000	40	Piston Ring	1080 Th.Nos.
19	Multan Spring Factory Bahawalpur Road		Auto Parts	1999	1800	10	Auto Parts	150 Th.Nos.
20	Shafiq Engineering Co (Pvt) Ltd Sharae Rashid Mumtazabad	6525703	Auto Parts	1983	5000	15	Auto Parts	30 Th.Nos.
21	Shahsons Pakistan (Pvt) Ltd. 8-C/1 Industrial Estate	6539574	Auto Parts	1981	20938	36	Auto Parts	450 Th.Nos.
22	Food Festival 125-B Nishtar Chowk	543969, 583969	Bakery Products	1992	2200	26	Bakery Items, Fast Food	25 M.Tons
23	Rohi Bread (Asma Food) Vehari Road	4552103	Bakery Products	1990	5000	17	Bread	500 M.Ton
24	Shani Foods (Sona Bread) Bhalwal Road	6760297/6 526117	Bakery Products	1996	5000	25	Bread	600 M.Ton
25	Standard Biscuits Factory 4 J/ii le	4537661	Bakery Products	1985	7000	11	Bakery Products	100 M.Tons
26	Vita Bread, Suraj Kund Road	4231101	Bakery Products	1996	1000	10	Bread	500 M.Ton
27	Coca Cola (Pvt) Ltd. Vehari Road	6525171	Beverage	1962	58933	105	Coca Cola	9300 Crates / Day

Sr. No.	Name / Address of unit	Phone No. / Website	Industry	Estb. Year	Investment (Th.Rs.)	Emp	Product	Annual Installed Capacity
28	Multan Enterprises Adda Shahpur Bossan Road	4745017,4 745025	Beverage	2005	12500	120	Beverages	1200 Th.Crates
29	Pakistan Fruit Juice Co (Pvt) Ltd Khanewal Road Multan	4554590,4 554593	Beverage	1962	19870	72	Rc Cola, Upper 10, Flora	1200 Th.Crates
30	Shamim & Co. (Pvt) Ltd. District Jail Road	4586637	Beverage	1963	22315	735	Pepsi, 7Up, Mirinda	10500 Th.Crates
31	Amna Food Industries Suraj Kund Road	6527093	Biscuits	1999	2400	12	Biscuits	200 M.Ton
32	International Food Industries Ghalla Mandi	6529229	Biscuits	1993	5000	50	Biscuits	100 M.Ton
33	Multan Food Industry, Suraj Kund Road	4230670	Biscuits	2003	6000	30	Biscuits	600 M. Ton
34	S.M. Food Industries Central Jail Road	6529685	Biscuits	2000	5500	20	Biscuits	170 M.Ton
35	Sherwaini Food Industries, 3-A-iii Industrial Estate	4584959, 0303- 7969051	Biscuits	1991	2000	10	Biscuits	400 M.Ton
36	Super Biscuit Factory Central Jail Road	528059	Biscuits	2000	4000	14	Biscuits	160 M.Ton
37	Universal Food Maker, Vehari Road	6560755	Biscuits	1999	9000	22	Biscuits	1000 M. Ton
38	Yaseen Food Industry, Bahawalpur Road	6529958	Biscuits	2003	4200	22	Biscuits	600 M. Ton

Sr. No.	Name / Address of unit	Phone No. / Website	Industry	Estb. Year	Investment (Th.Rs.)	Emp	Product	Annual Installed Capacity
39	Ahmed Concrete Products 15-Km Khanewal Road	4550714-4554073	Cement Products	1972	5000	12	Cement Products	50000 Sq.Ft.
40	Atta Chemical 5-C Industrial Estate Multan	6514037	Chemical	2006	130000	22	Sulphuric Acid	18000 Tons
41	Mongal Plywood Industries (Pvt) Ltd. Bahawalpur Road	4230840	Chip / Straw Board	1995	4000	25	Plywood	1000 Th.Sqft
42	National Plywood (Pvt) Ltd. Bahawalpur Road	4377491-3	Chip / Straw Board	1991	16000	31	Plywood	1000 Th.Sqft
43	Shaheen Plywood 44 A Industrial Estate	6537776	Chip / Straw Board	1998	4500	22	Plywood	300 Th.Sqft
44	Al Khalil Cold Storage Bahawalpur Road	4233082	Cold Storage	1988	4500	5	Vegetable/ Fruits	10000 Bags
45	Al-Hafiz Cold Storage Vehari Road	6527772	Cold Storage	1988	3200	7	Vegetable/ Fruits	10000 Bags
46	Al-Mehr Cold Storage, Budhla Road	6771339	Cold Storage	1998	5500	7	Vegetable/ Fruits	20000 Bags
47	Aziz Cold Storage Hasan Parwana Colony	6543061	Cold Storage	1990	2000	5	Vegetable/ Fruits	5000 Bags
48	Barkat Ali Cold Storage Skuraj Miani Road	4540974	Cold Storage	1998	3500	7	Vege/Fruits	500 Bags
49	Bilal Cold Storage Sher Shah Bye Pass Road	0300-6326741	Cold Storage	2000	5000	5	Vegetable/ Fruits	25000 Bags

Sr. No.	Name / Address of unit	Phone No. / Website	Industry	Estb. Year	Investment (Th.Rs.)	Emp	Product	Annual Installed Capacity
50	Chohan Brothers Ice & Cold Storage Bahawalpur Bye Pass Chowk	6527368	Cold Storage	2002	2000	5	Vegetable/ Fruits	4000 Bags
51	Kausar Cold Storage Dehli Gate Multan	4541870	Cold Storage	1978	11000	9	Vegetable/ Fruits	20000 Bags
52	Madina Cold Storage Vehari Road	6525886	Cold Storage	1990	2000	10	Vegetable/ Fruits	22000 Bags
53	Mohsin Cold Storage Budhla Road	6774437	Cold Storage	1997	7500	5	Vegetable/ Fruits	20000 Bags
54	Mubarik Cold Storage Azmat Wasti Road	4543756	Cold Storage	1980	1500	5	Vegetable/ Fruits	16000 Bags
55	Multan Cold Storage Chowk Shah Abbas Vehari Road	6243412	Cold Storage	1980	2200	6	Vegetable/ Fruits	5000 Bags
56	Nadir Cold Storage Vehari Road	6526245	Cold Storage	1980	7500	11	Vegetable/ Fruits	15000 Bags
57	Nasir Cold Storage & Ice Factory Nothern Bye Pass Khanewal Road	0300-9638409	Cold Storage	2003	10500	6	Vegetable/ Fruits	5000 Bags
58	New Al Madina Cold Storage Setal Mari Budhla Road	6771540	Cold Storage	2000	67500	6	Vegetable/ Fruits	10000 Bags
59	Raees Cold Storage Bye Pass Sher Shah Road	6529027	Cold Storage	2004	5000	5	Vegetable/ Fruits	15000 Bags
60	Shadab Cold Storage Suraj Miani Road	4540401	Cold Storage	1983	3700	7	Vegetable/ Fruits	4500 Bags

Sr. No.	Name / Address of unit	Phone No. / Website	Industry	Estb. Year	Investment (Th.Rs.)	Emp	Product	Annual Installed Capacity
61	Sultan Cold Storage Muzaffargarh Sher Shah Bye Pass Road	4233070	Cold Storage	2003	3500	8	Vegetable/ Fruits	25000 Bags
62	Usman Cold Storage Bahawalpur Road	6761777	Cold Storage	2002	8500	5	Vegetable/ Fruits	16000 Bags
63	Zia Cold Storage, 1-D Industrial Estate	6539255	Cold Storage	1984	3000	11	Vegetable/ Fruits	12000 Bags
64	Coslab (Pvt) Ltd. 11- Km.Bosan Road	4745201-3	Cosmetics	1998	5000	28	Cosmetics	40000 Th.Nos.
65	Abbas Enterprises Mauza Kothe Wala		Cotton Ginning And Pressing	1992	4000	23	Cotton Lint/ Seed	4 Sawgins , 1Press
66	Abdullah Enterprises (Unit No.1) Tateypur Road Qadirpur Ran	6774494-5	Cotton Ginning And Pressing	1986	12500	30	Cotton Lint/ Seed	5 Sawgins, 1 Press, 7 Expellers
67	Abdullah No.2 Cotton Factory Khanewal Road		Cotton Ginning And Pressing	1987	3500	20	Cotton Lint/ Seed	6 Sawgins , 1Press
68	Al-Faisal Cotton Ginniners Hayat Khan Wala Mouza Basti Mithoo Shujabad	614545995	Cotton Ginning And Pressing	1988	6500	37	Cotton Lint/ Seed	4 Sawgins , 1Press
69	Al-Fareed Cotton Ginning & Pressing Factory Mouza Naseerpur Teh. Shujabad		Cotton Ginning And Pressing	1987	3500	25	Cotton Lint/ Seed	4 Sawgins , 1Press

Sr. No.	Name / Address of unit	Phone No. / Website	Industry	Estb. Year	Investment (Th.Rs.)	Emp	Product	Annual Installed Capacity
70	Al-Hanif Cotton Ginning & Pressing Factory Shujabad		Cotton Ginning And Pressing	1990	5600	25	Cotton Lint/ Seed	4 Sawgins , 1Press
71	Al-Hayat Cotton Factory Jalalpur Road Shujabad		Cotton Ginning And Pressing	1988	2000	22	Cotton Lint/ Seed	4 Sawgins , 1Press
72	Al-Khalid Cotton Ginners Jalalpur Road Mouza Khera Shujabad	6667704	Cotton Ginning And Pressing	1992	5500	C	Cotton Lint/ Seed	3 Sawgins, 1 Press
73	Allah Tawakal Cotton Ginners Mouza Hilal Wajah Jalalpur Rd Shujabad	812218	Cotton Ginning And Pressing	1992	6000	C	Cotton Lint/ Seed	4 Sawgins, 1 Press, 4 Expellers
74	Al-Makhdum Cotton Industries Opp.Police Station Vehari Road	061-4514562	Cotton Ginning And Pressing	1985	5000	26	Cotton Lint/ Seed	4 Sawgins , 1Press
75	Almass Cotton G & P Factory & Oil Mills Mouza Halalwajah Shujabad		Cotton Ginning And Pressing	1993	3000	18	Cotton Lint/ Seed	4 Sawgins , 1Press
76	Al-Noor Cotton Factory Mouza Basti Dad Shujabad	614519307	Cotton Ginning And Pressing	2002	4500	19	Cotton Lint/ Seed	4 Sawgins, 1 Press
77	Al-Razaq Cotton Industries Matootli Road Adda Peer Ghaib Shujabad	812017	Cotton Ginning And Pressing	2003	6000	C	Cotton Lint/ Seed	6 Sawgins , 1Press, 6 Expeller

Sr. No.	Name / Address of unit	Phone No. / Website	Industry	Estb. Year	Investment (Th.Rs.)	Emp	Product	Annual Installed Capacity
78	Al-Rehman Cotton Ginning & Pressing Factory Mouza Khara Jalalpur Road Shujabad	6539762	Cotton Ginning And Pressing	1989	3300	15	Cotton Lint/ Seed	4 Sawgins , 1Press
79	Al-Saudia Cotton Factory Adda Rangala More Jalalpur Road Shujabad	614812141	Cotton Ginning And Pressing	2002	7000	19	Cotton Lint/ Seed	4 Sawgins, 1 Press
80	Al-Sehr Cotton Ginning & Pressing Factory Mouza Jakhar Shujabad		Cotton Ginning And Pressing	1987	3000	10	Cotton Lint/ Seed	3 Sawgins , 1Press
81	Ammon Ginning Cotton & Oil Mills Mouza Haveeli Long Jalalpur	614210093	Cotton Ginning And Pressing	1986	5000	49	Cotton Lint/ Seed	5 Sawgins , 1 Press, 4 Expellers
82	Aqeela Cotton Industries & Oil Mills (Pvt) Ltd. Mouza Bomb More Jalalpur	0303-7963741	Cotton Ginning And Pressing	1993	6000	37	Cotton Lint/ Seed	6 Sawgins , 1Press, 6 Expeller
83	Arain Brothers Cotton Ginners Kotli Najabat Road Shujabad	Wrong No.	Cotton Ginning And Pressing	2000	5000	19	Cotton Lint/ Seed	5 Sawgins, 1 Press
84	Arain Cotton Ginning & Pressing Factory Bahawalpur Road	4231061	Cotton Ginning And Pressing	1987	6000	22	Cotton Lint/ Seed	5 Sawgins , 1Press, 5 Expeller

Sr. No.	Name / Address of unit	Phone No. / Website	Industry	Estb. Year	Investment (Th.Rs.)	Emp	Product	Annual Installed Capacity
85	Arbab Cotton Industries & Oil Mills Mouza Alipur Sadat Jalalpur	614513157	Cotton Ginning And Pressing	2002	8500	C	Cotton Lint/ Seed	5 Sawgins , 1Press, 7 Expeller
86	Atta Industries Cotton Ginning Pressing & Oil Mills Mouza Lutufpur Tehsil Shujabad	4396367	Cotton Ginning And Pressing	1986	7000	C	Cotton Lint/ Seed	4 Sawgins , 1Press
87	Awan Cotton Ginning & Pressing Factory Pull Dawar Bahawalpur Road	6142510070	Cotton Ginning And Pressing	1988	8500	32	Cotton Lint/ Seed	4 Sawgins , 1Press, 4 Expeller
88	Ayyaz Cotton Factory Jhoke Gamun Lar Shujabad Rd	4576233	Cotton Ginning And Pressing	1989	2500	25	Cotton Lint/ Seed	4 Sawgins , 1Press
89	Baba Cotton Factory Shujabad Road Jalalpur		Cotton Ginning And Pressing	1984	3500	13	Cotton Lint/ Seed	4 Sawgins , 1Press
90	Babar Agro Industries Old Shujabad Road Near Chowk Nag Shah	6536355	Cotton Ginning And Pressing	1988	7000	36	Cotton Lint/ Seed	3 Sawgins, 1 Press
91	Baha-Ud-Din Zakaria Inds Bossan Rd	6221043,6224371	Cotton Ginning/ Pressing	1992	7000	C	Cotton Lint/ Seed	3 Sawgins , 1Press
92	Bajwa Brothers Cotton Ginning & Pressing Factory Lodhran Road Jalalpur Pirwala	45202324520332	Cotton Ginning And Pressing	1997	7000	38	Cotton Lint/ Seed	5 Sawgins , 1Press, 10 Expeller

Sr. No.	Name / Address of unit	Phone No. / Website	Industry	Estb. Year	Investment (Th.Rs.)	Emp	Product	Annual Installed Capacity
93	Bajwa Cotton Ginning & Pressing Factory Basti Malook	4510336	Cotton Ginning And Pressing	1980	8500	22	Cotton Lint/ Seed	5 Sawgins, 1 Press
94	Bajwa Model Industries & Oil Mills Mouza Basti Mithoo Jalalpur Road Shujabad	0303-7962949	Cotton Ginning And Pressing	2002	7000	20	Cotton Lint/ Seed	4 Sawgins , 1Press, 4 Expeller
95	Banquit Enterprises Chak No.384 Wb Pull Dawa Basti Malook	4510573	Cotton Ginning And Pressing	2000	8500	25	Cotton Lint/ Seed	4 Sawgins , 1Press, 4 Expeller
96	Bela Industries Mouza Mianpur Belawala Shujabad Road Jalal Pur Pirwala		Cotton Ginning And Pressing	1992	5500	27	Cotton Lint/ Seed	4 Sawgins , 1 Press, 5 Expellers
97	Bismillah Cotton Factory Chak 131/10-R		Cotton Ginning And Pressing	1990	4000	26	Cotton Lint/ Seed	4 Sawgins , 1Press
98	Bismillah Cotton Factory Mouza Matooli Shujabad		Cotton Ginning And Pressing	1992	3800	25	Cotton Lint/ Seed	4 Sawgins , 1Press
99	Bukhari Industries Cotton Ginning & Pressing Mauza Khara Shujabad	4812080	Cotton Ginning And Pressing	1983	7000	C	Cotton Lint/ Seed	5 Sawgins , 1Press, 3 Expellers

Sr. No.	Name / Address of unit	Phone No. / Website	Industry	Estb. Year	Investment (Th.Rs.)	Emp	Product	Annual Installed Capacity
100	Chanab Cotton Ginning & Pressing Factory Jhoke Gamun Lar Shujabad Rd	4576270	Cotton Ginning And Pressing	1987	3000	17	Cotton Lint/ Seed	4 Sawgins , 1Press
101	Channar Cotton Industries Mouza Lutufpur Tehsil Shujabad		Cotton Ginning And Pressing	1992	7500	C	Cotton Lint/ Seed	5 Sawgins , 1Press
102	Data Cotton Factory Lar Multan Road Shujabad		Cotton Ginning And Pressing	1991	5000	24	Cotton Lint/ Seed	4 Sawgins , 1Press
103	Dayane Ghani Cotton Ginning Pressing & Oil Mills Mouza Sikandarabad Shujabad	0300-8634782	Cotton Ginning And Pressing	2003	5000	27	Cotton Lint/ Seed	4 Sawgins , 1Press
104	Ehsan Cotton & Oil Factory Khanewal Road	4553896, 4552459	Cotton Ginning And Pressing	1952	3000	30	Cotton Lint/ Seed	4 Sawgins , 1Press
105	Farooq Model Ginning Factory Old Shujabad Rd	4263426	Cotton Ginning And Pressing	1980	30000	20	Cotton Lint/ Seed	4 Sawgins , 1Press
106	Fatima Enterprise No.2 (Ginning Section) Dera Budha Bahawalpur Road	6527350	Cotton Ginning And Pressing	1973	4070	30	Cotton Lint/ Seed	5 Sawgins , 1 Press, 4 Expellers
107	Fatima Enterprises Ginning Section Bahawalpur Road	4230633-4	Cotton Ginning And Pressing	1962	7956	62	Cotton Lint/ Seed	10 Sawgins, 2 Press, 6 Expellers

Sr. No.	Name / Address of unit	Phone No. / Website	Industry	Estb. Year	Investment (Th.Rs.)	Emp	Product	Annual Installed Capacity
108	Five Star Corporation Cotton Ginning Pressing & Oil Mills Bahawalpur Sukha Lhr Road	4233437, 6525560	Cotton Ginning And Pressing	2002	4500	19	Cotton Lint/ Seed	7 Sawgins , 1Press, 4 Expeller
109	Gallawala Cotton Company R.Station Gallewala		Cotton Ginning And Pressing	1940	4000	40	Cotton Lint/ Seed	9 Sawgins , 1Press
110	Ghalloo Cotton Industries Mauza Sabra Jalalpur Pirwala		Cotton Ginning And Pressing	1987	2800	27	Cotton Lint/ Seed	4 Sawgins , 1Press
111	Ghausia Industries Ltd. (Khawaja Bashir Ahmed & Sons) Kotli Adil Jalalpur	515253	Cotton Ginning And Pressing	1983	4500	32	Cotton Lint/ Seed	6 Sawgins , 1Press
112	Ghazali Industries (Mohd Rashid Enterprises) Mouza Sher Sing Vehari Road	4550417	Cotton Ginning And Pressing	1985	2600	22	Cotton Lint/ Seed	6 Sawgins , 1Press
113	Ghulam Muhammad Small Sawgin Pater Mauza Behadarpur Jalalpur		Cotton Ginning And Pressing	1994	2800	24	Cotton Lint/ Seed	4 Sawgins , 1Press
114	Gui Din Cotton Ginning Fty; Dunyapur Road	6527792	Cotton Ginning And Pressing	1987	4500	9	Cotton Lint/ Seed	4 Sawgins , 1Press

Sr. No.	Name / Address of unit	Phone No. / Website	Industry	Estb. Year	Investment (Th.Rs.)	Emp	Product	Annual Installed Capacity
115	Gulshan Ali Cotton Factory Mouza Basti Mithoo Jalalpur Road Shujabad	0303-6678225	Cotton Ginning And Pressing	2004	7000	18	Cotton Lint/ Seed	4 Sawgins, 1 Press
116	Hafiz Riaz Bros Cotton Ginnersdunia Pur Road Gulzapur	6599121-122	Cotton Ginning And Pressing	1995	6000	27	Cotton Lint/ Seed	4 Sawgins , 1Press, 3 Expellers
117	Haji Maula Bukhsh Cotton Factory Railway Road Shujabad		Cotton Ginning And Pressing	1937	8000	45	Cotton Lint/ Seed	13 Sawgins , 1Press
118	Hassan Industries Cotton Ginning Pressing & Oil Mouza Peer Ghaib Shujabad	4812312	Cotton Ginning And Pressing	2004	5500	22	Cotton Lint/ Seed	6 Sawgins, 1 Press
119	Hilal Ginning & Oil Mills 1-A Industrial Estate	481535-6	Cotton Ginning And Pressing	1971	2000	16	Cotton Lint/ Seed	8 Sawgins , 1Press
120	Hussain Cotton Factory, Pull Chatha, Vehari Road	6592646	Cotton Ginning And Pressing	1990	9500	32	Cotton Lint/ Seed	4 Sawgins, 1 Press
121	Hussain Cotton Industries Vehari Road	6592523	Cotton Ginning And Pressing	1987	5000	24	Cotton Lint/ Seed	4 Sawgins , 1Press
122	Idrees Aziz Ginning & Oil Mills Industrial Estates	6539552	Cotton Ginning And Pressing	1987	4000	26	Cotton Lint/ Seed	4 Sawgins , 1Press

Sr. No.	Name / Address of unit	Phone No. / Website	Industry	Estb. Year	Investment (Th.Rs.)	Emp	Product	Annual Installed Capacity
123	Indus Dyeing And Manufacturing Co Ltd Mototly Road Naseer Pur Shujabad	4812178-3	Cotton Ginning And Pressing	1990	14409	C	Cotton Lint/ Seed	5 Sawgins, 1 Press, 5 Expellers
124	Iqbal Sawgin Machine Nahawalpur Road Jalalpur		Cotton Ginning And Pressing	1995	2800	25	Cotton Lint/ Seed	4 Sawgins , 1Press
125	Ittefaq Cotton Ginning & Pressing Factory Mauza Khara Jalalpur		Cotton Ginning And Pressing	1983	3000	20	Cotton Lint/ Seed	4 Sawgins , 1Press
126	Ittefaq Quality Ginners Sidra Cotton Industries Lodhrana Road Jalalpur Pirwala		Cotton Ginning And Pressing	1987	6500	C	Cotton Lint/ Seed	4 Sawgins, 1 Press
127	Jam Cotton Alipur More Jalalpur Pirwala	4212162	Cotton Ginning And Pressing	2002	10011	24	Cotton Lint/ Seed	5 Sawgins , 1Press, 4 Expeller
128	Joiya Sadat Cotton Industries Mauza Alipur More Jalalpur Pirwala	4210210	Cotton Ginning And Pressing	1987	8000	30	Cotton Lint/ Seed	6 Sawgins , 1Press, 6 Expeller
129	Karim Cotton Ginning & Pressing Dhoreywala Kotti Najabat Road Shujabad	06083-519026-7	Cotton Ginning And Pressing	1990	6500	C	Cotton Lint/ Seed	5 Sawgins , 1Press
130	Kh. Bashir Ahmad & Sons Shujabad Road	6528528	Cotton Ginning And Pressing	1983	5000	15	Cotton Lint/ Seed	2 Sawgins , 1Press

Sr. No.	Name / Address of unit	Phone No. / Website	Industry	Estb. Year	Investment (Th.Rs.)	Emp	Product	Annual Installed Capacity
131	Khawaja Bashir Ahmad & Sons Cotton Ginning Pressing & Oil Mill	0614-812211, Wwww.Kbs.Com.Pk	Cotton Ginning And Pressing	1997	2240	C	Cotton Lint/ Seed	8 Sawgins, 2 Press, 17 Expellers
132	Khera Cotton Factory 18 Km Kassi Vehari Road	6599136	Cotton Ginning And Pressing	1998	8500	5	Cotton Lint/ Seed	4 Sawgins, 1 Press
133	Khokhar Cotton Factory 19-Industrial Estate	6539254, 6536119	Cotton Ginning And Pressing	1995	9500	29	Cotton Lint/ Seed	5 Sawgins , 1Press, 5 Expeller
134	Kissan Cotton Ginning & Pressing Factory Basti Mithoo Shujabad	0614-61110	Cotton Ginning And Pressing	1988	3000	C	Cotton Lint/ Seed	4 Sawgins , 1Press
135	Labar Cotton Factory Mauza Labar Old Shujabad Road	4810108	Cotton Ginning And Pressing	1985	8000	20	Cotton Lint/ Seed	4 Sawgins , 1Press, 3 Expeller
136	Lodhi Cotton Industries Chak Rs Shujabad	0614-379551	Cotton Ginning And Pressing	1986	7000	10	Cotton Lint/ Seed	4 Sawgins, 1 Press
137	M. Shafi Baby Size Sawgin Obawara Teh. Shujabad		Cotton Ginning And Pressing	1995	4000	5	Cotton Lint/ Seed	4 Sawgins , 1Press
138	Manzoor Ahmad Baby Size Sawgin Machine Obawra Teh. Shujabad		Cotton Ginning And Pressing	1995	3500	5	Cotton Lint/ Seed	4 Sawgins , 1 Press
139	Maqbool Cotton Factory Khanewal Road	4551336-7	Cotton Ginning And Pressing	1972	7000	25	Cotton Lint/ Seed	5 Sawgins , 1Press, 6 Expeller

Sr. No.	Name / Address of unit	Phone No. / Website	Industry	Estb. Year	Investment (Th.Rs.)	Emp	Product	Annual Installed Capacity
140	Masha Allah Cotton Ginners Mouza Sabra Adda Chookran Lodhran Road Jalalpur	0300-6305461	Cotton Ginning And Pressing	1988	8000	20	Cotton Lint/ Seed	4 Sawgins, 1 Press
141	Mehmood Cotton Ginning Pressing & Oil Mills (Pvt) Ltd. New Railway Station Talepur	4744211, 4744322	Cotton Ginning And Pressing	1994	13000	33	Cotton Lint/ Seed	16 Sawgins , 2 Press, 31 Expeller
142	Mehr Cotton Factory Lar Road Shujabad	4397282	Cotton Ginning And Pressing	1986	6500	22	Cotton Lint/ Seed	4 Sawgins , 1Press
143	Mehran Ginningfactory Khanewal Road	4554171	Cotton Ginning And Pressing	1990	4500	C	Cotton Lint/ Seed	4 Sawgins , 1Press
144	Mohammad Ishaq Sawgin Machine Mauza Bahaderpur Jalalpur		Cotton Ginning And Pressing	1995	3800	24	Cotton Lint/ Seed	4 Sawgins , 1Press
145	Mohammad Nawaz Sawginmachin e Chah Choorey Wala Mauza Jahanpur		Cotton Ginning And Pressing	1994	3500	23	Cotton Lint/ Seed	4 Sawgins , 1Press
146	Mubarak Cotton Factory Chak No.5 Faiz Bahawalpur Road	4577361	Cotton Ginning And Pressing	1990	9500	5	Cotton Lint/ Seed	4 Sawgins, 1 Press

Sr. No.	Name / Address of unit	Phone No. / Website	Industry	Estb. Year	Investment (Th.Rs.)	Emp	Product	Annual Installed Capacity
147	Mudasar Iqbal Cotton Industries Mouza Bomb More Jalalpur Pirwala	4212134	Cotton Ginning And Pressing	2004	6000	17	Cotton Lint/ Seed	5 Sawgins, 1 Press
148	Muhammad Rashid Enterprises 19-Kassi Vehari Road	4815135	Cotton Ginning And Pressing	2000	8500	18	Cotton Lint/ Seed	6 Sawgins , 1Press, 8 Expeller
149	Nadeem Cotton G & P Factory Chak R.S. Multan Rd Shujabad		Cotton Ginning And Pressing	1988	4000	23	Cotton Lint/ Seed	4 Sawgins , 1Press
150	Nasraminallah Cotton Factory Rajaram Shujabad		Cotton Ginning And Pressing	1991	3500	20	Cotton Lint/ Seed	4 Sawgins , 1Press
151	National Cotton Factory Mouza Bahadarpur Lodhran Road Jalalpur Pirwala	4510552	Cotton Ginning And Pressing	1985	4000	24	Cotton Lint/ Seed	4 Sawgins , 1Press
152	National Cotton Factory Nasirabad Bahawalpur Road	4234932	Cotton Ginning And Pressing	1974	6000	C	Cotton Lint/ Seed	3 Sawgins , 1Press
153	New Karim Cotton Factory Peer Ghaib Jalalpur Road Shujabad	0614-812285	Cotton Ginning And Pressing	1987	8500	C	Cotton Lint/ Seed	5 Sawgins , 1Press, 4 Expeller
154	Nomi Cotton Factory Sikandarabad Shujabad		Cotton Ginning And Pressing	1988	4800	24	Cotton Lint/ Seed	4 Sawgins , 1Press
155	Progressive Cotton Factory Bahawalpur Rd	4230511	Cotton Ginning And Pressing	1984	11000	20	Cotton Lint/ Seed	4 Sawgins , 1Press, 4 Expellers

Sr. No.	Name / Address of unit	Phone No. / Website	Industry	Estb. Year	Investment (Th.Rs.)	Emp	Product	Annual Installed Capacity
156	Qaisar And Co. Cotton Factory Chowk Khokhran		Cotton Ginning And Pressing	1986	6000	14	Cotton Lint/ Seed	3 Sawgins , 1Press
157	Rafi Cotton Factory Khanewala Road	578399	Cotton Ginning And Pressing	1972	7000	27	Cotton Lint/ Seed	5 Sawgins , 1Press, 6 Expeller
158	Rana Abdul Aziz Baby Sawgin Mauza Obara Shujabad		Cotton Ginning And Pressing	1995	3500	23	Cotton Lint/ Seed	4 Sawgins , 1Press
159	Rashid Asghar Cotton G & Pressing Factory Old Shujabad Road		Cotton Ginning And Pressing	1972	3800	C	Cotton Lint/ Seed	6 Sawgins , 1Press
160	Rashid Furqan Cotton Industries Vehari Road	4592523	Cotton Ginning And Pressing	1987	8500	20	Cotton Lint/ Seed	4 Sawgins , 1Press, 4 Expeller
161	Rehmania Cotton Ginning Pressing & Oil Mills Lodhran Road Mouza Kander Adda Chookran Jalalpur Pirwala	4520301	Cotton Ginning And Pressing	2003	6500	37	Cotton Lint/ Seed	5 Sawgins , 1Press, 4 Expeller
162	Rehmania Enterprises (Sidra Cotton Industries) Mouza Bahadarpur Lodhran Road Jalalpur Pirwala	4520321	Cotton Ginning And Pressing	1985	7000	39	Cotton Lint/ Seed	4 Sawgins, 1 Press

Sr. No.	Name / Address of unit	Phone No. / Website	Industry	Estb. Year	Investment (Th.Rs.)	Emp	Product	Annual Installed Capacity
163	Roomi Cotton Factory (Unit No.2) 2/A Ie	6539434	Cotton Ginning And Pressing	1981	20000	55	Cotton Lint/ Seed	10 Sawgins, 2 Press, 4 Expellers
164	Roomi Cotton Factory Khanewal Road	4551111-4551112	Cotton Ginning And Pressing	1990	4000	15	Cotton Lint/ Seed	4 Sawgins , 1Press
165	Roomi Cotton Factory Plot No.2-A Industrial Estate		Cotton Ginning And Pressing	1981	15000	35	Cotton Lint/ Seed	10 Sawgins , 1Press
166	Sadat Ginning Press Vehari Road	6528350	Cotton Ginning And Pressing	1974	1000	25	Cotton Lint/ Seed	4 Sawgins , 1Press
167	Sadiq Cotton Ginning And Pressing Factory Old Shujabad Road Sikandarabad	4582384-4572175	Cotton Ginning And Pressing	1989	4000	21	Cotton Lint/ Seed	4 Sawgins , 1Press
168	Salahuddin Suleman C.F.(Pvt) Ltd. Budhla Sant Chak 9 Terpai Talepur		Cotton Ginning And Pressing	1989	3500	C	Cotton Lint/ Seed	3 Sawgins , 1Press
169	Saleem Rehman Cotton Ginning And Pressing Fty Chak R.S.Shujaabad Old Shujabad Road	6528515-7965089	Cotton Ginning And Pressing	1985	3300	C	Cotton Lint/ Seed	3 Sawgins , 1Press
170	Sani Cotton Ginners (Pvt) Ltd. Vehari Road		Cotton Ginning And Pressing	1986	1394	24	Cotton Lint/ Seed	4 Sawgins , 1Press

Sr. No.	Name / Address of unit	Phone No. / Website	Industry	Estb. Year	Investment (Th.Rs.)	Emp	Product	Annual Installed Capacity
171	Sardar Sawgin Machine Pir Ghaib Shujabad Road Jalalpur		Cotton Ginning And Pressing	1993	110	5	Cotton Lint/ Seed	4 Sawgins , 1Press
172	Sh. Muhammad Latif & Sons C.G.P. & Oil Mills 17- Industrial Estate	6539366	Cotton Ginning And Pressing	1972	2000	31	Cotton Lint/ Seed	4 Sawgins , 1Press
173	Shabbir Cotton Industries Mianpur Belley Wala Shujabad Road Jalalpur	0614-210718	Cotton Ginning And Pressing	1982	1500	55	Cotton Lint/ Seed	6 Sawgins, 1 Press
174	Shabbir Industries (Pvt) Ltd. Mianpur Bellawala Shaujabad Road, Jalalpur		Cotton Ginning And Pressing	1989	5800	20	Cotton Lint/ Seed	4 Sawgins , 1Press
175	Shabnum Cotton Factory Jalal Pur Road Shujabad		Cotton Ginning And Pressing	1993	4500	22	Cotton Lint/ Seed	4 Sawgins , 1Press
176	Shahid Cotton Factory Duniyapur Rd	4599240	Cotton Ginning And Pressing	1985	3500	28	Cotton Lint/ Seed	4 Sawgins, 1 Press
177	Shalimar Cotton Factory(Pvt) Ltd. Shujabad Road Jalalpur Pirwala		Cotton Ginning And Pressing	1993	4892	30	Cotton Lint/ Seed	4 Sawgins , 1Press
178	Shujabad Industries (Pvt) Ltd. Jalal Pur Pirwala Rd Shujabad		Cotton Ginning And Pressing	1987	8000	35	Cotton Lint/ Seed	9 Sawgins , 1Press

Sr. No.	Name / Address of unit	Phone No. / Website	Industry	Estb. Year	Investment (Th.Rs.)	Emp	Product	Annual Installed Capacity
179	Sidra Cotton Ginning & Pressing Factory Mouza Bahadar Pur Lodhran Road Jalalpur	6220201-6220301	Cotton Ginning And Pressing	1991	3000	22	Cotton Lint/ Seed	4 Sawgins , 1Press
180	Silver Seed (Pvt) Ltd Baha Dar Pur Road Jalalpur	6520208	Cotton Ginning And Pressing	1985	6011	19	Cotton Lint/ Seed	11 Sawgins , 2 Press
181	Star Cotton Factory (Pvt) Ltd. New Central Jail Road	6526634-6525634	Cotton Ginning And Pressing	1970	4000	15	Cotton Lint/ Seed	4 Sawgins , 1Press
182	Subhan Allah Cotton Ginning & Pressing Mouza Khara Shujabad		Cotton Ginning And Pressing	1990	2500	12	Cotton Lint/ Seed	4 Sawgins , 1Press
183	Suleman Cotton Factory Jahania Road Budhla		Cotton Ginning And Pressing	1990	4000	C	Cotton Lint/ Seed	4 Sawgins , 1Press
184	Sultan Industries (Pvt) Ltd. Tatapur Station		Cotton Ginning And Pressing	1965	4000	C	Cotton Lint/ Seed	4 Sawgins , 1Press
185	Tareen Cotton Industries Dunyapur Road		Cotton Ginning And Pressing	1986	4000	15	Cotton Lint/ Seed	4 Sawgins , 1Press
186	The Multan Cotton Factory Tatepur	4744027	Cotton Ginning And Pressing	2000	10400	30	Cotton Lint/ Seed	4 Sawgins, 1 Press
187	Usmanabad Cotton Industries Usmanabad Chowk Dunyapur Rd	6539101	Cotton Ginning And Pressing	1986	5000	15	Cotton Lint/ Seed	4 Sawgins , 1Press

Sr. No.	Name / Address of unit	Phone No. / Website	Industry	Estb. Year	Investment (Th.Rs.)	Emp	Product	Annual Installed Capacity
188	Wahab Cotton Factory Mouza Shahppur Lahore Road Shujabad	0614-396961	Cotton Ginning And Pressing	2002	7000	29	Cotton Lint/ Seed	4 Sawgins, 1 Press
189	Wains Cotton Ginners Matital Road		Cotton Ginning And Pressing	1984	5000	C	Cotton Lint/ Seed	4 Sawgins, 1 Press
190	Wali Cotton Fty. Khanewal Road		Cotton Ginning And Pressing	1985	4000	22	Cotton Lint/ Seed	4 Sawgins , 1Press
191	Yousaf Shahzad Cotton Industries Mouza Basti Mithoo Gharbi Shujabad	0614-410030	Cotton Ginning And Pressing	1998	5500	17	Cotton Lint/ Seed	4 Sawgins, 1 Press
192	Chaudhry Khurshid Cotton Factory Central Jail Rd		Cotton Waste	1997	2000	8	Cotton Waste	2 Machines
193	Javid Fazal Cotton Waste Factory Chowk Shah Abbas Vehari Road	6525850	Cotton Waste	1969	800	16	Cotton Waste	2 Machines
194	Naeem Corporation Cotton Pressing Factory, Bahawalpur Road	6528526	Cotton Waste	1999	2000	10	Cotton Waste	2 Machines
195	Rustam Pressing Factory Bahawalpur Road	4230983	Cotton Waste	1999	1500	10	Cotton Waste	2 Machines
196	Aaa Doublers (Pvt) Ltd 86 Ale	6536241	Doubling Of Yarn	2004	17000	35	Doubling Of Yarn	8 Machines

Sr. No.	Name / Address of unit	Phone No. / Website	Industry	Estb. Year	Investment (Th.Rs.)	Emp	Product	Annual Installed Capacity
197	Sher Mohammad Yam Doubling Factory Sher Mohammad, Pak Gate	4512370	Doubling Of Yam	1970	4500	10	Doubling Of Yam	128 Machines
198	Sher Muhammad Doubling Yam Mohallah Khatiana	4587694	Doubling Of Yam	1995	1500	6	Doubling Of Yam	2 Machines
199	Berlex Lab International, Chowk Nagshah, Moza Kayenpur	0321-7770808	Drugs & Pharmaceuticals	2008	4000	16	Tablets, Capsule	8 Million Nos. 10 Th.Litres
200	Bio Fine Pharmaceutical (Pvt) Ltd. 74 Industrial Estate	6539174	Drugs & Pharmaceuticals	1993	7036	11	Syrups, Tablets	180 Th.Litres, 10 Million Nos.
201	Brington Pharma Pvt Ltd., 54-Industrial Estate		Drugs & Pharmaceuticals	1985	2400	C	Distilled Water	6 Million Nos.
202	Hamaz Pharmaceuticals (Pvt)Ltd. 13 Km Lutafabad Bosan Road	4595100-109	Drugs & Pharmaceuticals	1997	14851	30	Tablets , Capsules , Syrups	360 Million Nos, 100 Million Nos, 300 Th.Litres
203	Jamsons Pharmaceutical Lab (Regd) 88-B Industrial Estate	6539357	Drugs & Pharmaceuticals	1994	2000	4	Syrups	100 Th.Litres
204	Jinnah Pharmaceuticals (Pvt) Ltd., Khanewal Road	3008734500	Drugs & Pharmaceuticals	2005	60000	25	Tablets	500 Million Nos.

Sr. No.	Name / Address of unit	Phone No. / Website	Industry	Estb. Year	Investment (Th.Rs.)	Emp	Product	Annual Installed Capacity
205	Life Pharma Ceutical Company 24-iii Industrial Estate	6539227	Drugs & Pharmaceuticals	1980	3000	9	Powder Blend	80 M.Tons
206	Mallard Pharmaceutical (Pvt) Ltd., Qadirpur Rawan	4542731	Drugs & Pharmaceuticals	2006	50000	15	Tablets	300 Million Nos.
207	Sarco Chemical Industries, Qadirpur Rawan Road	4550292	Drugs & Pharmaceuticals	2009	4000	25	Tablets	200 Million Nos.
208	Virgo Manufacturing (Pvt) Ltd., Plot # 50-51-52, Industrial Estate		Drugs & Pharmaceuticals	1988	4300	C	Syrups	12 Th.Litres
209	Al Haram Embroidery Bahawalpur Road	4377415	Embroidery	2000	14500	44	Embroided Cloth	4 Machines
210	Hilal Fabrics (Pvt) Ltd. 1-Industrial Estate	6537125	Embroidery	1968	14269	217	Embroided Cloth	4 Machines
211	Pak Arab Fertilizers (Pvt)Ltd. Khanewal Road	9220022	Fertilizer	1974	2812898	1026	Urea , Can Urea, Np	92400 M.Tons, 450000 M.Tons, 304500 M.Tons
212	Abrar Flour Mills 46-B, Industrial Estate	6539680	Flour Mills	1993	1200	23	Flour	160 M.Tons/ Day
213	Al-Atta Flour Mills Mehmood Kot Bossan Road	6220481	Flour Mills	1994	7500	10	Flour	80 M.Tons/ Day

Sr. No.	Name / Address of unit	Phone No. / Website	Industry	Estb. Year	Investment (Th.Rs.)	Emp	Product	Annual Installed Capacity
214	Al-Hafiz Flour Mills Qadirpur Ran	4578751	Flour Mills	2005	17000	10	Flour	200 M.Tons/Day
215	Al-Jahan Flour Mills Near Industrial Estate Road	6537992	Flour Mills	1993	20000	18	Flour	240 M.Tons/Day
216	Al-Khair Flour Mills Shersah Bye Pass Road	4590558	Flour Mills	2005	20000	14	Flour	200 M.Tons/Day
217	Al-Noor Flour Mill By-Pass Muzaffargarh Road	6539502	Flour Mills	1990	10200	10	Flour	160 M.Tons/Day
218	Anwar Flour Mills Jalilabad	4514492	Flour Mills	1965	2200	16	Flour	40 M.Tons/Day
219	Aslam Flour Mills Fazalabad Vehari Road,	6527400	Flour Mills	1987	1346	11	Flour	100 M.Tons/Day
220	Atta Flour Mills Qasim Bela	4513850	Flour Mills	1990	8000	16	Flour	20 M.Tons/Day
221	Baba Abdul Aziz Flour Mills (Pvt) Ltd Chowk Bye Pass Muzaffargarh Road	4510443	Flour Mills	2005	20000	10	Flour	200 M.Tons/Day
222	Babu Flour Mills Shah Shams Road	4551380	Flour Mills	1982	3000	17	Flour	80 M.Tons/Day
223	Babu Ibrahim Flour Mills Khanewal Road	6774857	Flour Mills	1983	1400	15	Flour	40 M.Tons/Day
224	Bashir Flour Mills Budhla Road, Seetal Mari	4552977, 4560477	Flour Mills	1992	7000	10	Flour	160 M.Tons/Day

Sr. No.	Name / Address of unit	Phone No. / Website	Industry	Estb. Year	Investment (Th.Rs.)	Emp	Product	Annual Installed Capacity
225	Bismillah Flour Mills, Ghanta Ghar, Near Dreamland Cinema	0300-6360968	Flour Mills	1998	3500	C	Flour	40 M.Tons/Day
226	Elegance Flour Mills Chak Rs Shujabad	0614-379255	Flour Mills	1992	7000	14	Flour	80 M.Tons/Day
227	Faiz Flour Mills Makhdum Rashid Road	6776190	Flour Mills	1986	2400	17	Flour	80 M.Tons/Day
228	Faizan Flour Mills Vehari Road	6564267	Flour Mills	1996	7000	11	Flour	160 M.Tons/Day
229	Fida Hussain Flour Mills Nishat Road Near Pull Madina	4546764	Flour Mills	1986	1000	15	Flour	40 M.Tons/Day
230	Gharib Nawaz Flour Mills Jalalpur Pirwala Shujabad	0614-812211	Flour Mills	1997	10331	12	Flour	120 M.Tons/Day
231	Ghousia Flour Mills Surej Kund Road	4232136, 4232259	Flour Mills	1974	4500	C	Flour	160 M.Tons/Day
232	Green Flour Mills, Khanewal Road	6761492	Flour Mills	2007	4000	10	Flour	200 M.Tons/Day
233	Hameed Flour Mills Gujjar Khadda, Multan Cantt.	4543051	Flour Mills	1980	8500	12	Flour	120 M.Tons/Day
234	Hamzai Flour & General Mills Qairpur Ran	4578835	Flour Mills	1999	20000	12	Flour	160 M.Tons/Day
235	Hassan Flour Mills Khuni Burj	4544644	Flour Mills	1956	6500	14	Flour	80 M.Tons/Day

Sr. No.	Name / Address of unit	Phone No. / Website	Industry	Estb. Year	Investment (Th.Rs.)	Emp	Product	Annual Installed Capacity
236	Hilal Flour & General Mills Industrial Estate	6537179	Flour Mills	1969	48616	23	Flour	240 M.Tons/Day
237	Jan Flour Mills Mouza Kotli Aadil Jalalpur Pirwala		Flour Mills	1995	3000	10	Flour	80 M.Tons/Day
238	Javaid Flour Mills Railway Road	4518820, 4511968	Flour Mills	1971	2000	14	Flour	60 M.Tons/Day
239	Karim Sons Flour Mills Northern By Pass Near Main Bosan Road	6223097	Flour Mills	1998	9500	15	Flour	160 M.Tons/Day
240	Laila Irshad Flour Mills Chah Jamuwala Vehari Road	4232054	Flour Mills	1999	4500	12	Flour	120 M.Tons/Day
241	Lucky Flour Mills Railway Road	4547261	Flour Mills	1958	2200	14	Flour	40 M.Tons/Day
242	Maqbool Flour Mills Masoom Shah Road	6562787	Flour Mills	1994	4600	15	Flour	80 M.Tons/Day
243	Miran Flour Mills T.B Hospital Road	4510443	Flour Mills	1987	10000	10	Flour	200 M.Tons/Day
244	Muhammad Ishaq & Bros (Shaheen Flour Mills) Karampura O/S Daulat Gate	4553815	Flour Mills	1991	1000	15	Flour	60 M.Tons/Day
245	National Flour Mills T.B. Hospital Road	4544577, 4544677	Flour Mills	1967	10500	16	Flour	120 M.Tons/Day
246	Nawab Flour Mills Khanewal Road	4553511	Flour Mills	1992	2000	10	Flour	100 M.Tons/Day

Sr. No.	Name / Address of unit	Phone No. / Website	Industry	Estb. Year	Investment (Th.Rs.)	Emp	Product	Annual Installed Capacity
247	Nawaz Flour Mills Iqbal Road O/S Daulat Gate	4514485	Flour Mills	1981	2500	16	Flour	40 M.Tons/Day
248	New Hafiz Flour Mills Bypass Muzaffzgarh Road	6539077	Flour Mills	1991	9000	11	Flour	160 M.Tons/Day
249	New Tariq Flour Mills Karimabad Bahawalpur Road	4234514	Flour Mills	1999	15000	18	Flour	240 M.Tons/Day
250	Pakeeza Flour Mills Bahawalpur Road Basti Malook	4510104	Flour Mills	1994	10000	13	Flour	160 M.Tons/Day
251	Qamar Flour Mills Jalilabad	4516779	Flour Mills	1961	3000	16	Flour	120 M.Tons/Day
252	Rustom Flour Mills Vehari Road Chowk Shah Abbas	6528387	Flour Mills	1990	1800	12	Flour	80 M.Tons/Day
253	Saifal Flour Mills By Pass Sher Shah Road	6539640	Flour Mills	1990	40000	16	Flour	200 M.Tons/Day
254	Salman Flour Mills Khuni Burj	6783672	Flour Mills	1995	6000	17	Flour	80 M.Tons/Day
255	Shamshad Flour Mills Sameejabad 40 Feet Road	6772735	Flour Mills	2000	8500	15	Flour	100 M.Tons/Day
256	Shujabad Flour Mills Basti Chak R.S Multan Road, Shujabad		Flour Mills	1995	1200	14	Flour	60 M.Tons/Day

Sr. No.	Name / Address of unit	Phone No. / Website	Industry	Estb. Year	Investment (Th.Rs.)	Emp	Product	Annual Installed Capacity
257	Sultan Flour & General Mills (Pvt) Ltd. Fazalabad Vehari Road	6529529	Flour Mills	1980	2424	11	Flour	120 M.Tons/Day
258	Tariq Flour Mills Bahawalpur Road	6529514	Flour Mills	1992	6500	15	Flour	140 M.Tons/Day
259	United Flour & General Mills 10/B Industrial Estate	6539235	Flour Mills	1977	10000	45	Flour	200 M.Tons/Day
260	Wahid Flour & General Mills Muzaffargarh Bye Pass Road	6525678	Flour Mills	2000	12900	15	Flour	120 M.Tons/Day
261	Wali Flour Mills City Malgodam Road	4549006	Flour Mills	1969	3000	16	Flour	40 M.Tons/Day
262	Zafar Flour Mills Kotla Toley Khan Chowk Cili Khana	4545182	Flour Mills	1986	5000	17	Flour	60 M.Tons/Day
263	Zaib Flour Mills Suraj Miani Road	4582888	Flour Mills	1998	8000	10	Flour	80 M.Tons/Day
264	Sajid Foundry Stadium Road Vehari Road	6770153	Foundry Products	2000	800	7	Spare Parts	100 M.Tons
265	Agro Food Processing 30-33-li Industrial Estate Multan	9239450	Fruit Juices	2009	321000	20	Fruit Juices	72000 M.Tons
266	Famous Food (Pvt) Ltd. 22/A-li, Industrial Estate	6539012	Fruit Juices	1986	8000	20	Fruit Juices	270000 Crates

Sr. No.	Name / Address of unit	Phone No. / Website	Industry	Estb. Year	Investment (Th.Rs.)	Emp	Product	Annual Installed Capacity
267	Mohammadi Glass Industries Old Shujabad Road	4515170	Glass & Glass Products	1992	4000	7	Glass And Glass Products	2500 Th.Nos.
268	Zakriya Glass Factory Bahawalpur Road	0300-6373698	Glass & Glass Products	2004	6000	9	Glass Products	3000 Th.Nos.
269	M.R.P. Industries (Pvt) Ltd., 20 Km Bahawalpur Road	4377501	Glue	1993	1500	10	Glue	1400 M.Tons
270	Al Noor Chicks 7/A le	6539881-2	Hatchery	1994	5000	10	Chicks	6000 Th.Nos
271	Conimpexs Hatchery & Breeding Form 22/A-iii, 22/B le	6539108	Hatchery	1980	6355	36	Chicks	5250 Th.Nos
272	Hi Tech Hatchery Khanewal Road	4571299	Hatchery	2000	5500	49	Chicks	1600 Th.Nos
273	Islamabad Hatchery Qadirpur Rawan	4578406	Hatchery	1996	2500	24	Chicks	4800 Th.Nos
274	Veterinary Products Organization 3/C le	6539405	Hatchery	1987	7500	70	Chicks	20000 Th.Nos
275	Asia Tex Jahangir Abad Khanewal Road	4556862	Hosiery Products	2005	13500	5	Hosiery Products	400 Th.Dozen
276	Dastgir Enterprises Basti Noorpur Bahawalpur Road	6776650	Hosiery Products	2005	10500	20	Hosiery Products	200 Th.Dozen

Sr. No.	Name / Address of unit	Phone No. / Website	Industry	Estb. Year	Investment (Th.Rs.)	Emp	Product	Annual Installed Capacity
277	Mughees Textiles 2 Hometex Export Zone Ansara Colony	6771500	Hosiery Products	2002	1500	75	Hosiery Products	800 Th.Dozen
278	Raheem Industries 29 Hometex Export Zone	6777520	Hosiery Products	2005	12500	60	Hosiery Products	600 Th.Dozen
279	Rainbow Industries 810-Khanewal Road Multan	4552488	Hosiery Products	1994	5000	200	Hosiery Products	25 Th.Dozen
280	Three Star Hosiery Mills (Pvt) Ltd 10/A le	6539229	Hosiery Products	1984	2858	3141	Hosiery Products	500 Th.Dozen
281	Chaudhry Engineering (Unit No.1) Vehari Road	6529022	Industrial Machinery	1980	2700	7	Ginning/ Pressing Machinery	10 Nos.
282	Mehr Engg: And Gen: Order Suppliers Chowk Shah Abbas	6529438	Industrial Machinery	1980	2000	5	Ghee Plant	400 Nos.
283	Mehroz Engineering Bahawalpur Bye Pass Road	6529619	Industrial Machinery	1994	3700	10	Vegetable Ghee Plant	10 Nos.
284	Munawar Engineering Vehari Road	6760395, 6760957	Industrial Machinery	2003	2400	6	Ginning/ Pressing Machinery	6 Nos.
285	Mushtaq Engineering Works Shershah Bye Pass Road	6537974	Industrial Machinery	1995	2600	8	Flour Mill Machinery	10 Nos.
286	New Pak Argo Engineering Vehari Road		Industrial Machinery	1972	3000	12	Ginning/ Pressing Machinery	7 Nos.

Sr. No.	Name / Address of unit	Phone No. / Website	Industry	Estb. Year	Investment (Th.Rs.)	Emp	Product	Annual Installed Capacity
287	Shahab Industries, Qadirpur Rawan Bye Pass	4545071, 4585036	Industrial Machinery	2008	10000	10	Mechanical Engg. Services	10000 Nos.
288	Boc (Pakistan) Limited.	6562201-02	Industrial/ Burn Gases	2003	27464	5	Co2 Gas	19800 M. Tons
289	K.A. Gases Khanewal Road	6562590	Industrial/ Burn Gases	1978	4500	1	Co2 Gas	30 M. Tons
290	Khair Enterprises Khanewal Road	4554031, 512895	Industrial/ Burn Gases	1980	12000	23	Co2 Gas	2500 M. Tons
291	Khan Industrial & Medical Gases Bahawalpur Chowk	4234614	Industrial/ Burn Gases	1990	1000	5	Oxygen Gas	15 M. Tons
292	Multan Chemical Ltd 4-Cii Industrial Estate	6539259-81206	Industrial/ Burn Gases	1985	20000	89	Oxygen Gas	45 M. Tons
293	Pak Gases (Pvt) Ltd Khanewal Road	4555136-7	Industrial/ Burn Gases	1988	20000	30	Co2 Gas	900 M. Tons
294	Sun Rise Industries (Pvt) Ltd Khanewal Road	4551188	Industrial/ Burn Gases	1999	9500	10	Co2 Gas	40 M. Tons
295	Supreme Gas Industries (Pvt) Ltd Khanewal Road	6773845	Industrial/ Burn Gases	1991	9262	14	Co2 Gas	12960 M. Tons
296	Alliance Packages Tin Factory Bahawalpur Road	4230419	Light Engineering	1987	6339	35	Tin Cans	25000 Nos

Sr. No.	Name / Address of unit	Phone No. / Website	Industry	Estb. Year	Investment (Th.Rs.)	Emp	Product	Annual Installed Capacity
297	G.A. Master Workshop Vehari Road Multan	4528364	Light Engineering	1975	100	5	Tin Cans	20000 Nos
298	Karim Container Gopalpur Bahawalpur Road	4377702	Light Engineering	1999	6700	15	Tin Cans	300000 Nos
299	Malik Mohammad Ramzan & Co (Pvt) Ltd. Bahawalpur Road	6526111	Light Engineering	1982	590	5	Tin Cans	600000 Nos.
300	Nadeem Brothers (Haji Malik Ellahi Bux & Sons Vehari Road	4230639	Light Engineering	1988	210	11	Tin Cans	1000000 Nos.
301	Shahid & Brothers Bahawalpur Road	6529458	Light Engineering	1994	800	11	Tin Cans	30000 Nos
302	Tez Gas (Pvt) Ltd., Adda Muhammad Bahawalpur Road	042-5847791-2	Lpg Gas	2004	9000	11	Lpg Gas	50000 Kgs.
303	Aamir Oil (Lubricants) Stadium Road Multan	4556545	Lubricants	1996	5000	18	Lube Oil	1000 Th.Litres
304	Golden Lubricants Suraj Kund Road	6527092	Lubricants	1999	3500	14	Lube Oil	7500 Th.Litres
305	Hakeem Lubricants (Pvt) Ltd., Plot No9.68 Industrial Estate Multan	4583935	Lubricants	1999	8000	9	Lube Oil	380 M.Tons

Sr. No.	Name / Address of unit	Phone No. / Website	Industry	Estb. Year	Investment (Th.Rs.)	Emp	Product	Annual Installed Capacity
306	Kamran Lubricants (Pvt) Ltd., 16 Kassi Vehari Road	4815026-7	Lubricants	1997	17000	15	Lube Oil	1000 Th.Litres
307	Prime Lubricants (Pvt) Ltd. 21-Km.Old Shujabad Road	4810022	Lubricants	1992	45949	8	Lube Oil	800 Th.Litres
308	Raheem And Sons Oil (Regd) Vehari Road Multan		Lubricants	1999	3500	C	Lube Oil	1000 Th.Litres
309	Roshan Lubricants, Bahawalpur Road		Lubricants	2008	12000	15	Lube Oil	1000 Th.Litres
310	Saif Lubricants, 56-Industrial Estate		Lubricants	2008	12000	C	Lube Oil	800 Th.Litres
311	Sun Lubricants Factory 25-Km Muzaffargarh Road	4590491-2	Lubricants	1996	11219	9	Lube Oil	5000 Th.Litres
312	Muhammad Bakhsh Centrifugal Pmps Chowk Shahiddan		Motors / Pumps	1990	500	5	Centrifugal Pumps	550 Nos.
313	Niazi Eng Work Shop Akbar Road	4511103	Motors / Pumps	1954	700	5	Centrifugal Pumps	400 Nos.
314	Adil Packages 67 le	6538103	Packages	2004	2500	45	Corrugated Boxes	1000 Th.Nos
315	Afshar Packages (Pvt) Ltd. Industrial Estate	6537831	Packages	1988	2000	20	Packing Material	3000 M.Tons

Sr. No.	Name / Address of unit	Phone No. / Website	Industry	Estb. Year	Investment (Th.Rs.)	Emp	Product	Annual Installed Capacity
316	Ahmed Paper Cone & Packages le Road Hamidpur Kanora	6537464	Packages	2002	2000	10	Corrugated Boxes	320 Th.Nos
317	Al Qadir Packages Suraj Kund Road	6529682	Packages	2001	2200	10	Corrugated Boxes	400 Th.Nos
318	Aziz Brothers (Pvt) Ltd., 41-D, Industrial Estate	6539420	Packages	1990	1400	16	Paper Cone, Carruogated Boxes	1800 Lac Nos. , 360000 Nos.
319	Diamond Paper Mill 4/E le	6010324	Packages	1989	2500	7	Corrugated Boxes	200 Th.Nos
320	Ehsan Packages Plot 67 & 69, Industrial Estate	6539103	Packages	1993	1000	15	Packing Material	1000 M.Tons
321	Five Star Packages le Hamidpur Kanora	6538598	Packages	2003	1300	12	Corrugated Boxes	300 Th.Nos
322	Iqra Enter Prises Dera Muhammadi Bahawalpur Bye Pass Road	4233364	Packages	1995	2500	30	Corrugated Boxes	500 Th.Nos
323	Ma International Packages 105 le	6536711	Packages	2001	3000	6	Corrugated Boxes	600 Th.Nos
324	Macci Packages Bahawalpur Road	4230066	Packages	2000	1200	8	Packing Material	2500 M. Ton
325	Multan Packages 4-J Industrial Estate	6539170	Packages	1987	2585	20	Corrugated Boxes	450 Th.Nos

Sr. No.	Name / Address of unit	Phone No. / Website	Industry	Estb. Year	Investment (Th.Rs.)	Emp	Product	Annual Installed Capacity
326	Qureshi Packages Hassanabad Khanewal Road	4522629	Packages	1997	2400	9	Corrugated Boxes	300 Th.Nos
327	Raheem Packages Khanewal Road Hassanabad	4552697	Packages	2002	1500	10	Corrugated Boxes	250 Th.Nos
328	Shahid Packages, Bahawalpur Road	4233128, 64230455	Packages	1996	5700	10	Corrugated Boxes	500 Th.Nos
329	Shani Packages Hassanabad Khanewal Road	6774995	Packages	2001	1400	6	Corrugated Boxes	200 Th.Nos
330	Younis Sons (Pvt) Ltd. Plot 24, I-C, Industrial Estate	6539413, 6536987	Packages	1984	1600	12	Corrugated Boxes	1500 Th.Nos
331	Ali Paint Industries Chowk Bahawalpur Bye Pass Rd	4230325	Paints And Varnishes	2000	2200	7	Paints	200 Th.Litres
332	Khawaja Industries, 34- Industrial Estate	6539391, 6538306	Paints And Varnishes	1978	1000	4	Paints	100 Th.Litres
333	Al Noor Paper Mills Chowk Bahawalpur Road	4234882	Paper And Paper Board	2005	6500	9	Fluting Paper	2000 M.Tons
334	Ali Paper Mills, Chowk Bahawalpur		Paper And Paper Board	2005	6500	9	Fluting Paper	2000 M.Tons
335	Ittehad Packages Bahawalpur Road Ratec Wali Basti	4234604	Paper And Paper Board	2000	5000	9	Fluting Paper	2000 M.Tons

Sr. No.	Name / Address of unit	Phone No. / Website	Industry	Estb. Year	Investment (Th.Rs.)	Emp	Product	Annual Installed Capacity
336	Kashif Brothers Packages Muzaffargarh Bye Pass Road	4233223	Paper And Paper Board	2001	4500	6	Fluting Paper	25000 M.Tons
337	Ma International Paper Tube Products 105 le	6536811	Paper And Paper Board	2003	1000	5	Paper Tube Products	300 M.Tons
338	Pak Packages Bahawalpur Road	4233128	Paper And Paper Board	2000	4500	8	Fluting Paper	2000 M.Tons
339	Shoab Paper Mill 43/B1 le	6536856	Paper And Paper Board	2001	1800	10	Fluting Paper	1000 M.Tons
340	Us Paper & Allied Industries 61/A le	6536631	Paper And Paper Board	2003	6500	22	Fluting Paper	4000 M.Tons
341	Aftab Industries Khanewal Road	4555259	Paper Cone	1990	500	5	Paper Cone	5000 Th.Nos
342	Fine Industries Industrial Estate	6539278	Paper Cone	1993	800	20	Paper Cone	8300 Th.Nos
343	Fine Packages Opp Pak Arab Fertilizer Khanewal Road	6562857	Paper Cone	1997	1374	35	Paper Cone	5000 Th.Nos
344	Ma International (Cone Project) 105 le	6536711	Paper Cone	2000	3000	10	Paper Cone	30000 Th.Nos
345	P.B. Industries, 11-A Industrial Estate	6539231	Paper Cone	1985	1000	20	Paper Cone	6000 Th.Nos
346	Pak Enterprises Vehari Road	4552463	Paper Cone	1990	500	5	Paper Cone	5000 Th.Nos

Sr. No.	Name / Address of unit	Phone No. / Website	Industry	Estb. Year	Investment (Th.Rs.)	Emp	Product	Annual Installed Capacity
347	Qadir Packages, I.E.		Paper Cone	2005	5000	8	Paper Cone	25000 Th.Nos
348	Shoaib Paper Mills, Plot # 43-B-I, Industrial Estate	6536856	Paper Cone	1986	800	20	Paper Cone	8300 Th.Nos
349	Superior Quality Industry 62/E le	6537983, 0300-8734522	Paper Cone	2004	5000	11	Paper Cone	30000 Th.Nos
350	Yasir Board Industries 18 le	6536859	Paper Cone	1996	30000	51	Paper Cone	6000 Th.Nos
351	Agri Farm Services 77, 79, 81 & 83 le	6537720-1	Pesticides / Insecticides	1998	20000	65	Pesticides/ Insecticides	3600 Th.Lites
352	Cs (Pvt) Ltd 41/E le	6536426	Pesticides / Insecticides	2002	2200	4	Pesticides/ Insecticides	240 Th.Litres
353	Lucky Linkers (Pvt) Ltd Hamidpur Kanora Shershah Bye Pass Road	6537292	Pesticides / Insecticides	2002	2000	7	Pesticides/ Insecticides	500 Th.Litres
354	The Expert 14 le	6538091-2	Pesticides / Insecticides	2004	5000	55	Pesticides/ Insecticides	540 Th.Litres
355	Al-Madina Bottles, Near Three Star Textile Mills, Sher Shah Rd		Plastic Products	2008	12000	12	Plastic Products	1000 Th.Nos.
356	Hygien Industries, 21-A Industrial Estate	65140116	Plastic Products	2008	14000	13	Plastic Products	1200 Th.Nos.
357	Ma International Plastic Products 105 le	6536711	Plastic Products	2005	1500	5	Plastic Products	120 M.Tons
358	Mushtaq Sons, Bahawalpur Road		Plastic Products	2008	4000	10	Plastic Products	1000 Th.Nos.

Sr. No.	Name / Address of unit	Phone No. / Website	Industry	Estb. Year	Investment (Th.Rs.)	Emp	Product	Annual Installed Capacity
359	Petco Plast Enterprises Khanewal Road Basti Wains	6775745	Plastic Products	2004	9500	5	Plastic Products	1000 Th.Nos.
360	Three Star Plastic Industries Bahawalpur Road	6243700	Plastic Products	2000	6000	19	Plastic Products	2500 Th.Nos.
361	Asia Feed Fedes (Pvt) Ltd 61-D, Industrial Estate	6539396, 6538287	Poultry Feed	1993	124800	148	Poultry Feed	1680 M.Tons
362	Conipex Integrated Hatchery Complex Feed, 1683 Qaid-E-Azam Mashet Multan Cantt-22-A-Iii, 22-B, 22-A-Iv	4515000-4585724	Poultry Feed	1988	12000	28	Poultry Feed	2500 M.Tons
363	Foods & Feeds 12 le	4543562	Poultry Feed	2002	5000	18	Poultry Feed	24000 M.Tons
364	Khawaja Feeds, Phase-I Industrial Estate	6525151, 0300-8633661	Poultry Feed	2009	10000	20	Poultry Feed	28000 M.Tons
365	Shan Feed Industries Qadirpur Rawan	4578619	Poultry Feed	1999	10000	50	Poultry Feed	86000 M.Tons
366	Super Tech Feed Mill Old Khanewal Road Qadir Pur Rawan	4578618	Poultry Feed	2007	5800	12	Poultry Feed	550 M.Tons
367	United Farmers & Manufacturers Matital Road		Poultry Feed	2001	5000	10	Poultry Meal	500 M.Tons

Sr. No.	Name / Address of unit	Phone No. / Website	Industry	Estb. Year	Investment (Th.Rs.)	Emp	Product	Annual Installed Capacity
368	Dasgiri Enterprises, Basti Noorpur, Bahawalpur Road, S Block Shah Rukne Alam Colony	6776650	Readymade Garments	2005	1050	20	Readymade Garments	20 Nos.
369	Marcotex Plot No.2 St.No.1 Ansar Colony	6772283	Readymade Garments	2000	18000	75	Readymade Garments	Power Looms 144 Nos, Machine 100
370	Modern Textile Industries 24-1-A Industrail Estate	6539200	Readymade Garments	1984	2000	C	Readymade Garments	125 Machines
371	Multan Fabrics (Pvt) Ltd 17 Hometex Export Zone Ansar Colony	6774416-18	Readymade Garments	1998	1700	300	Readymade Garments	175 Machines
372	Sunny Ready Made Garments Industrial Estate		Readymade Garments	1992	2642	30	Readymade Garments	160 Machines
373	Abdul Aziz Rice Husking Mauza Allahabad Shujabad		Rice Mills	1985	45	5	Rice	1 Huller
374	Abdul Aziz Rice Mills Matootli Shujabad		Rice Mills	1993	35	5	Rice	1 Huller
375	Abdul Latif Rice Mills Sher Shah Bye Pass Road		Rice Mills	1999	1100	6	Rice	2 Huller
376	Abdul Rehman Rice Factory Gamu Chowk Muzaffargarh Road Bye Pas		Rice Mills	2002	1000	8	Rice	3 Huller

Sr. No.	Name / Address of unit	Phone No. / Website	Industry	Estb. Year	Investment (Th.Rs.)	Emp	Product	Annual Installed Capacity
377	Abdul Rehman Rice Factory Vehari Road	6538340	Rice Mills	1993	50	5	Rice	1 Huller
378	Abdul Sattar Rice Husking Pull Qaimwala Shujabad		Rice Mills	1995	23	5	Rice	1 Huller
379	Aftab Rice Factory Mouza Kayanpur Sher Shah		Rice Mills	2004	800	11	Rice	4 Huller
380	Al Rahim Rice Factory	4263582	Rice Mills	1995	900	8	Rice	2 Huller
381	Ali Bahadar Rice Husking Pull Gucharwali Tehsil Shujabad		Rice Mills	2004	300	5	Rice	3 Huller
382	Allah Ditta Rice Husking Basti Malook Road Shujabad		Rice Mills	1995	25	5	Rice	1 Huller
383	Arian Rice Mills Bahawalpur Road	4231061	Rice Mills	2004	6000	8	Rice	3 Huller
384	Ashiq Rice Husking Machi Wahna Shujabad		Rice Mills	1994	30	5	Rice	1 Huller
385	Atta Muhammad Balooch Rice Husking Mauza Allahabad Shujabad		Rice Mills	1989	45	5	Rice	1 Huller
386	Ayub Rice Mills Khanewal Road Rajpur	6776528	Rice Mills	2002	2200	5	Rice	2 Huller

Sr. No.	Name / Address of unit	Phone No. / Website	Industry	Estb. Year	Investment (Th.Rs.)	Emp	Product	Annual Installed Capacity
387	Deen Muhammad Rice Husking Mauza Kotla Chakar Jalalpur		Rice Mills	1994	24	5	Rice	1 Huller
388	Faiz Bux Rice Husking Multan Road Shujabad		Rice Mills	1993	100	5	Rice	1 Huller
389	Fayyaz Hussain Rice Rusking Chak Sardarpur Shujabad		Rice Mills	1995	28	5	Rice	1 Huller
390	Hafiz Ghulam Murtaza Rice Husking Sikandarabad Shujabad		Rice Mills	1990	45	5	Rice	1 Huller
391	Haji Abdul Rehman Rice Rusking Shujabad		Rice Mills	1984	22	5	Rice	1 Huller
392	Haji Bashir Ahmad Rice Husking Matootli Shujabad		Rice Mills	1990	15	5	Rice	1 Huller
393	Haji Ghulam Hussain Rice Husking Sikandarabad Shujabad		Rice Mills	1993	55	5	Rice	1 Huller
394	Haji Ghulam Muhammad Rice Husking Mauza Khaja Shujabad		Rice Mills	1995	32	5	Rice	1 Huller
395	Hussain Bakhsh Rice Husking Khairpur Road		Rice Mills	1985	20	5	Rice	1 Huller

Sr. No.	Name / Address of unit	Phone No. / Website	Industry	Estb. Year	Investment (Th.Rs.)	Emp	Product	Annual Installed Capacity
396	Iqbal Butta Rice Mills Mouza Samurana Muzaffargarh Road	4263072	Rice Mills	2000	1000	5	Rice	1 Huller
397	Iqbal Rice Mills (Unit No.1) Sher Shah Bye Pass Road		Rice Mills	2000	550	7	Rice	2 Huller
398	Iqbal Rice Mills (Unit No.2) Sher Shah Bye Pass Road		Rice Mills	2000	900	5	Rice	2 Huller
399	Islam Din Rice Husking Railway Road Tatepur		Rice Mills	1995	40	5	Rice	1 Huller
400	Islami Rice Mills Munirabad Bahawalpur Road	6010495	Rice Mills	2005	9500	5	Rice	2 Sheller
401	Ittefaq Rice Mills Rana Shaukat More Tehsil Shujabad	4396409	Rice Mills	1994	4000	19	Rice	3 Huller
402	Jam Zulfiqar Rice Husking Chak Sardarpur Shujabad		Rice Mills	1994	40	5	Rice	1 Huller
403	Jan Muhammad Rice Mills Sher Shah Bye Pass Road		Rice Mills	2000	1100	7	Rice	1 Sheller
404	Khuda Bakhsh Rice Husking Pull Eisa Wala Shujabad		Rice Mills	2003	350	5	Rice	3 Huller

Sr. No.	Name / Address of unit	Phone No. / Website	Industry	Estb. Year	Investment (Th.Rs.)	Emp	Product	Annual Installed Capacity
405	Madina Rice Factory Rana Shaukat More Tehsil Shujabad	4396248, 4396314	Rice Mills	2000	4200	16	Rice	3 Huller
406	Mahboob Ahmad Rice Husking Mauza Chadhar		Rice Mills	1994	45	5	Rice	1 Huller
407	Mahmood Ali Rice Husking Mauza Rkan Hatti Shujabad		Rice Mills	1988	42	5	Rice	1 Huller
408	Major Iftikhar Rice Husking Peeray Wala Old Shujabad Road		Rice Mills	2005	400	5	Rice	1 Huller
409	Malik Ghulam Abbas Rice Husking Pull Khera Shujabad		Rice Mills	1994	50	5	Rice	1 Huller
410	Malik Habib Rice Husking Mauza Dairpur Shujabad		Rice Mills	1994	48	5	Rice	1 Huller
411	Maryam Rice Factory Suraj Kund Road		Rice Mills	1993	200	5	Rice	2 Hullers
412	Mastri Allah Ditta Rice Husking Mauza Chadhar		Rice Mills	1995	45	5	Rice	1 Huller
413	Mepa Rice Mills (Pvt) Ltd. Adda Biliwala, Bahawalpur Road	0300-9636843	Rice Mills	2009	7000	10	Rice	1 Sheller

Sr. No.	Name / Address of unit	Phone No. / Website	Industry	Estb. Year	Investment (Th.Rs.)	Emp	Product	Annual Installed Capacity
414	Mistri Hussain Bux Rice Rusking Mauza Shahpur Lar Road Shujabad		Rice Mills	1995	38	5	Rice	1 Huller
415	Moon Rice Factory Khanewal Road	4553467	Rice Mills	1990	1800	5	Rice	2 Huller
416	Muhammad Ajmal Rice Husking Railway Station		Rice Mills	1993	40	5	Rice	1 Huller
417	Muhammad Aleem Rice Mills Sher Shah Bye Pass Road		Rice Mills	2000	1100	6	Rice	2 Huller
418	Muhammad Ali Rice Rusking Basti Ghaju Shah Shujabad		Rice Mills	1994	28	5	Rice	1 Huller
419	Muhammad Amin Rice Husking Mauza Dairapur Shujabad		Rice Mills	1990	95	5	Rice	1 Huller
420	Muhammad Aslam Rice Factory Basti Taliwala Sher Shaha Road		Rice Mills	1990	525	6	Rice	2 Huller
421	Muhammad Azam Rice Husking Sikandarabad Shujabad		Rice Mills	1995	42	5	Rice	1 Huller

Sr. No.	Name / Address of unit	Phone No. / Website	Industry	Estb. Year	Investment (Th.Rs.)	Emp	Product	Annual Installed Capacity
422	Muhammad Ilyas Khan & Sons Rice Mills Sher Shah Bye Pass Road		Rice Mills	2002	950	5	Rice	3 Huller
423	Muhammad Nawaz Rice Rusking Basti Malook Road Shujabad		Rice Mills	1989	15	5	Rice	1 Huller
424	Muhammad Rice Husking Mauza Gardepur Shujabad		Rice Mills	1987	44	5	Rice	1 Huller
425	Muhammad Sharif Rice Husking Old Shujabad		Rice Mills	1995	112	5	Rice	1 Huller
426	Muhammad Sharif Siddique Rice Mills Suraj Kund Road		Rice Mills	2000	1900	5	Rice	1 Huller
427	Multan Rice Mills Bahawalpur Road	4514976	Rice Mills	2005	15000	5	Rice	4 Sheller
428	Mushtaq Ahmad Rice Husking Mauza Chadhur		Rice Mills	1995	35	5	Rice	1 Huller
429	Naveed Enterprises Industrial Estate		Rice Mills	1978	1200	8	Rice	2 Hullers
430	Nazir Calro Rice Mills Mouza Samuran Pull Kalroo	0300-9635795	Rice Mills	2004	800	6	Rice	3 Huller

Sr. No.	Name / Address of unit	Phone No. / Website	Industry	Estb. Year	Investment (Th.Rs.)	Emp	Product	Annual Installed Capacity
431	Nazir Rice Mills New Central Jail Road		Rice Mills	2000	880	6	Rice	2 Huller
432	Noor Rice Husking Railway Road Tatepur		Rice Mills	1993	240	5	Rice	1 Huller
433	Pir Khurshid Ul Haq Rice Mills Peer Colony No.3		Rice Mills	1997	800	5	Rice	2 Huller
434	Qadir Rice Factory Vehari Road Multan		Rice Mills	1980	200	5	Rice	2 Hullers
435	Rab Nawaz Rice Husking Sikandarabad Shujabad		Rice Mills	1980	22	5	Rice	1 Huller
436	Rabbani Rice Factory Suraj Kund Road Multan		Rice Mills	1980	1400	8	Rice	1 Sheller
437	Rajput Rice Husking Mauza Jalil Budhla		Rice Mills	1992	45	5	Rice	1 Huller
438	Ramzan Rice Husking Mauza Khaja Shujabad		Rice Mills	1995	38	5	Rice	1 Huller
439	Rana Rice Factory Sher Shah Road		Rice Mills	1998	1000	5	Rice	1 Huller
440	Rana Shafique Rice Husking Matootli Road Shujabad		Rice Mills	1992	20	5	Rice	1 Huller
441	Riasat Ali Rice Husking Multan Road Tatepur		Rice Mills	1995	40	5	Rice	1 Huller

Sr. No.	Name / Address of unit	Phone No. / Website	Industry	Estb. Year	Investment (Th.Rs.)	Emp	Product	Annual Installed Capacity
442	Saeed Rice Factory Suraj Kund Road	6526206	Rice Mills	2001	1600	8	Rice	3 Huller
443	Sajid Rice Mills 18 Kassi Vehari Road	4815031 (Pp)	Rice Mills	1997	1550	7	Rice	2 Huller
444	Shahbaz Khan Rice Husking Basti Ghaju Shah Shujabad		Rice Mills	1985	24	5	Rice	1 Huller
445	Shamim Bagum Rice Husking Old Shujabad Road		Rice Mills	1995	65	5	Rice	1 Huller
446	Sharif Rice Mills Mouza Kayanpur Sher Shah Road		Rice Mills	1999	1000	6	Rice	2 Huller
447	Suleman Rice Factory Mouza Kayanpur Sher Shah Road		Rice Mills	1997	1000	7	Rice	2 Huller
448	Syed Murid Hussain Shah Rice Husking Basti Malook Road Shujabad		Rice Mills	1990	150	5	Rice	1 Huller
449	Tariq Rice Factory Bahawalpur Road	4234714	Rice Mills	2004	3000	6	Rice	3 Huller
450	Tariq Rice Mills, Kahnewal Road	0300-8635047	Rice Mills	2007	10000	10	Rice	2 Sheller
451	Wahid Bux Rice Husking Qasba Maral		Rice Mills	1988	35	5	Rice	1 Huller

Sr. No.	Name / Address of unit	Phone No. / Website	Industry	Estb. Year	Investment (Th.Rs.)	Emp	Product	Annual Installed Capacity
452	Yameen Rice Factory Jamal More Tehsil Shujabad	4397644	Rice Mills	1995	3000	15	Rice	4 Huller
453	Yasin Rice Husking Jahania Road Budhla		Rice Mills	1992	40	5	Rice	1 Huller
454	Zafar Bhatti Rice Mills Sher Shah Bye Pass Road		Rice Mills	2002	1100	6	Rice	1 Huller
455	Zafar Hussain Rice Husking Jalalpur Road Shujabad		Rice Mills	1994	18	5	Rice	1 Huller
456	Zaka-Ullah Khan Rice Husking Basti Chak Rs Shujabad		Rice Mills	1994	500	5	Rice	1 Huller
457	Bilal Sizing Industries Old Bodhla Road Ansar Colony		Sizing Of Yam	1984	3500	9	Sizing Of Yam	300 M.Tons
458	Elahi Sizing Khanewal Road	4553687	Sizing Of Yam	1995	5000	9	Sizing Of Yam	400 M.Tons
459	Faisal Sizing Industries Iqbal Nagar T.B. Hospital	4542880	Sizing Of Yam	1995	1400	7	Sizing Of Yam	350 M.Tons
460	Insaf Sizing Factory Budhla Road	6774585	Sizing Of Yam	1993	500	5	Sizing Of Yam	200 M.Tons
461	Ittefaq Sizing Industries Multan Chungi No.14		Sizing Of Yam	1995	1000	8	Sizing Of Yam	250 M.Tons
462	Mubarak Sizing Industries Bodhla Road Ansar Colony		Sizing Of Yam	1983	2200	10	Sizing Of Yam	260 M.Tons

Sr. No.	Name / Address of unit	Phone No. / Website	Industry	Estb. Year	Investment (Th.Rs.)	Emp	Product	Annual Installed Capacity
463	Muzammil Sizing Chungi No.14	4543290	Sizing Of Yam	1996	1200	6	Sizing Of Yam	300 M.Tons
464	New Siddique Calendering Works, Iqbal Nagar Tb Hospital Road	4547045	Sizing Of Yam	1986	6400	10	Sizing Of Yam	4500 M.Tons
465	Pak Sizing Factory T.B. Hospital Road		Sizing Of Yam	1976	250	14	Sizing Of Yam	200 M.Tons
466	Razzaq Sizing Factory T.B. Hosipital Road		Sizing Of Yam	1995	700	5	Sizing Of Yam	200 M.Tons
467	Shahid Sizing Industries Awanpura Hafiz Jamal Road	4553391	Sizing Of Yam	1995	1400	8	Sizing Of Yam	500 M.Tons
468	Al-Khair Soap Factory Bahawalpur Road	4230666	Soap & Detergent	1993	300	5	Washing Soap	100 M.Tons
469	Ashfaq Soap Factory Vehari Road	6526785	Soap & Detergent	1991	125	10	Washing Soap	120 M.Tons
470	Ayub Soap Factory Bahawalpur Road	4234771-3	Soap & Detergent	1995	9500	165	Washing Soap	6000 M.Tons
471	Aziz Soap Factory Yaqboob Town Vehari Road	6527878	Soap & Detergent	1992	550	5	Washing Soap	2400 M.Tons
472	Haq Bahoo Soap Factory Peer Colony No.3 Suraj Kund Road		Soap & Detergent	2004	1180	7	Washing Soap	1500 M.Tons
473	Ittefaq Soap Factory Suraj Kund Road	6526206	Soap & Detergent	1997	1800	8	Washing Soap	750 M.Tons

Sr. No.	Name / Address of unit	Phone No. / Website	Industry	Estb. Year	Investment (Th.Rs.)	Emp	Product	Annual Installed Capacity
474	Kashif Soap Factory Bahawalpur Road	4233648	Soap & Detergent	1998	2500	5	Washing Soap	6000 M.Tons
475	Murad Soap & Chemicals Suraj Kund Road	6525147	Soap & Detergent	1982	2000	9	Washing Soap	485 M.Ton
476	Muzamil Soap Industry (Pvt) Ltd Bahawalpur Road	4377418, 4377408	Soap & Detergent	1994	9000	30	Washing Soap	4500 M.Tons
477	Saeed Soap Factory Bahawalpur Road	6244245	Soap & Detergent	1998	5950	20	Washing Soap	500 M.Ton
478	Saleem Soap Factory Suraj Kund Road	4232113	Soap & Detergent	1977	1146	20	Washing Soap	1500 M.Tons
479	Shahid Soap Factory Vehari Road	6528573	Soap & Detergent	1986	1450	10	Washing Soap	740 M.Tons
480	Yaqoob Soap Factory (Pvt) Ltd Bahawalpur Road	6529861-2	Soap & Detergent	1980	8500	130	Washing Soap	5000 M.Tons
481	Zahoor Soap Factory Bahawalpur Road	4233648	Soap & Detergent	1994	2500	9	Washing Soap	6200 M.Tons
482	Al-Mumtaz Industries Suraj Kund Road	6526181	Sodium Silicate	1976	1000	18	Sodium Silicate	1500 M.Tons
483	Al-Qadir Chemicals Suraj Kund Road	6529682	Sodium Silicate	1995	2700	5	Sodium Silicate	1000 M.Tons
484	Al-Sattar Soap & Chemical Industries Suraj Kund Road Multan	6527726	Sodium Silicate	1991	4500	14	Sodium Silicate Washing Soap	2400 M.Tons , 300 M.Tons

Sr. No.	Name / Address of unit	Phone No. / Website	Industry	Estb. Year	Investment (Th.Rs.)	Emp	Product	Annual Installed Capacity
485	Hamdard Chemical Industries Chowk Shah Abbas Suraj Kund Road	6526698	Sodium Silicate	1990	200	8	Sodium Silicate Washing Soap	1700 M.Tons , 1500 M.Tons
486	Janbe Chemical Industry Vehari Road	6525384	Sodium Silicate	1985	2500	7	Sodium Silicate	1000 M.Tons
487	Shahid Chemical Industries Multan 14-K.M. Bahawalpur Road Multan	4230455, 4230713	Sodium Silicate	1991	2000	8	Sodium Silicate	700 M.Tons
488	Three Star Chemical Industry Suraj Kund Road	4231533	Sodium Silicate	1999	12000	8	Sodium Silicate	600 M.Tons
489	Arfat Oil Industries (Pvt) Ltd., 19-K.M. Bahawalpur Road	4577219,4 577322	Solvent Oil Extraction	1997	8400	17	Solvent Oil	9000 M.Tons
490	Fatima Enterprises Limited (Solvent) 487-A Mumtazabad Vehari Road	4234574	Solvent Oil Extraction	1976	11119	40	Solvent Oil	50000 M.Tons
491	Hilal Flour & General Mills (Solvent Oil Extraction Unit) 2 le	6537179	Solvent Oil Extraction	1969	48616	21	Solvent Oil	20000 M.Tons
492	Insaf Oil Industries (Oil Extraction) Near 9 Kassi Vehari Road	4592406-8	Solvent Oil Extraction	1998	7000	16	Solvent Oil	2100 M.Tons

Sr. No.	Name / Address of unit	Phone No. / Website	Industry	Estb. Year	Investment (Th.Rs.)	Emp	Product	Annual Installed Capacity
493	Konya Industries (Pvt) Ltd., 62-B, Industrial Estate Multan		Solvent Oil Extraction	1992	2100	35	Solvent Oil	2500 M.Tons
494	Mansoor Oil Products (Pvt)Ltd. 1st Floor 966-B, Mumtazabad	4234574	Solvent Oil Extraction	1993	25790	15	Solvent Oil	30000 M.Tons
495	Maqbool Cotton Products Khanewal Road	6773766	Solvent Oil Extraction	2004	35000	5	Solvent Oil	30000 M.Tons
496	Mohammad Rasheed Enterprises (Solvent Oil) Ghareen Abad 19 Kasi Makhdoom Rasheed Road	4815132-5	Solvent Oil Extraction	2004	10500	10	Solvent Oil	500 M.Tons
497	Qadir Corporation Oil Mills (Solvent Plant) Adda Wazirabad Lar Road	4577450, 4577483	Solvent Oil Extraction	1998	7500	16	Solvent Oil	23400 M.Tons
498	Sharif Solvent Plant Plot No.4-A Industrial Estate	6539453	Solvent Oil Extraction	1988	6000	C	Solvent Oil	2000 M.Tons
499	Uifat Oil Mills 37 Industrial Estate	6536340	Solvent Oil Extraction	2001	20000	10	Solvent Oil	172500 M.Tons
500	Hussain Traders Suraj Kund Road	6529723	Surgical Cotton / Bandages	1983	2000	8	Surgical Cotton	595000 Kgs.
501	Abdul Ghafoor And Co Tannery 98 le	4542091	Tannery	1980	30000	16	Finished Leather	2005000 Sqft.

Sr. No.	Name / Address of unit	Phone No. / Website	Industry	Estb. Year	Investment (Th.Rs.)	Emp	Product	Annual Installed Capacity
502	Abdul Haq Tannery Plot No.101/2 Industrial Estate	4543387	Tannery	1957	190	C	Leather Sole	24720 Sq.Ft.
503	Ahmed Tanneries Factory 108 Industrial Estate	6539774, 81974	Tannery	1990	7000	8	Leather	10000 Sqft.
504	Khawaja Tannery (Pvt) Ltd Nawabpur Road	6523125, 6223125	Tannery	1965	8000	50	Finished Leather	300000 Sq.Ft.
505	Multan Hide Co. (Pvt) Ltd. Humayun Road	4510361-4583191	Tannery	1983	3000	35	Sole Leather	20000 Kgs.
506	Sheikh Abdul Ghafoor & Co. Industrial Estate	6539505	Tannery	1989	2500	12	Chrome Leather	500000 Sq.Ft.
507	Sheikh Mohammad Imran & Co. 101/1 Industrial Estate		Tannery	1982	1500	C	Chrome Leather	1250000 Sqft
508	Sheikh Muhammad Yousaf 106 B le		Tannery	1983	1500	C	Leather	500000 Sq.Ft.
509	Younis Sons (Pvt) Ltd 24-I-C, Industrial Estate	539413	Tannery	1990	5500	13	Leather	1900000 Kgs.
510	Ahmad & Ali Textile Processing Industries Mohallah Iqbal Nagar Tb Hospital Road	4587151	Textile Processing	2002	4560	8	Processed Cloth	3000 Th.Meters

Sr. No.	Name / Address of unit	Phone No. / Website	Industry	Estb. Year	Investment (Th.Rs.)	Emp	Product	Annual Installed Capacity
511	Ahmad Trading International Arifpura Tb Hospital Road	4780484	Textile Processing	2001	7500	18	Dyed Cloth	700 Th.Meters
512	Alpha Textile Chowk Bahawalpur Road	6526637	Textile Processing	1995	8000	15	Dyed Cloth	200 Th.Meters
513	Ghulam Muhyud Din Dyeing 436/30 Block A St.No.5 Ansar Colony	6771486	Textile Processing	2004	800	8	Dyed Cloth	1000 Th.Meters
514	Multan Textile Processing Industries Multan	6528066	Textile Processing	1998	1500	9	Textile Processing	3000 Th. Meters
515	Munir Ahmad & Brothers Iqbal Nagar Tb Hospital Road	4573585	Textile Processing	1993	500	5	Dyeing Of Yarn	500 M.Tons
516	National Dyeing Rasoolpur St.No.4 Near Govt Primary School Ahmedabad	4546592	Textile Processing	2005	400	5	Dyed Cloth	100 Th.Meters
517	Pak Textile Calendering Factory Outside Delhi Gate	4545185	Textile Processing	1978	600	6	Calendering Of Cloth	1000 Th.Meters
518	Premier Textile Mills St.No.5 Block A Ansar Colony	4550893	Textile Processing	2002	600	5	Processed Cloth	2000 Th.Meters
519	Qureshi Millat Calendering & Finishing Mills Aurengzeb Road		Textile Processing	1975	750	C	Calendering Of Cloth	5000 Th.Meters

Sr. No.	Name / Address of unit	Phone No. / Website	Industry	Estb. Year	Investment (Th.Rs.)	Emp	Product	Annual Installed Capacity
520	Siddiquia Calendering Works T.B Hospital Road	4547045	Textile Processing	1984	1000	8	Calendering Of Cloth	4200 Th.Meters
521	Tariq Dyeing Industries Multan	6526637	Textile Processing	1999	1200	8	Dyed Cloth	1200 Th. Meters
522	Ahmed Quality Fabrics (Pvt) Ltd Mouza Arbee Vehari Road	6110580	Textile Spinning	2001	10000	45	Cotton Yarn	3000 Spindles
523	Allah Wassaya Textile & Finishing Mills Ltd Chowk Allah Wasaya Vehari Road	4233624-6	Textile Spinning	1958	255600	680	Cotton Yarn	28192 Spindles
524	Amjad Textile Mills Ltd Basti Malook Bahawalpur Road	4510097	Textile Spinning	1992	400000	6669	Cotton Yarn	33408 Spindles
525	Anees Textile Mills Bahawalpur Road	4377335	Textile Spinning	2002	17917	190	Cotton Yarn	1600 Rotors
526	Colony Textile Mills Ltd. P.O Ismailabad	6539021-3, Wwww.Colonygroup.Com	Textile Spinning	1946	1076069	2205	Grey Cloth	186576 Spindles
527	Ehsan Elahi Industries (Pvt) Ltd Plot No. 61/C Industrial Estate	6539536	Textile Spinning	1989	25000	5	Cotton Yarn	12800 Spindles
528	Fazal Cloth Mills Ltd Khanewal Road	578022	Textile Spinning	2000	26000	576	Cotton Yarn	33120 Spindles
529	H.A. Fabrics Ltd. Khanewal Road	4553911, 4744426	Textile Spinning	1999	183372	555	Cotton Yarn	17280 Spindles

Sr. No.	Name / Address of unit	Phone No. / Website	Industry	Estb. Year	Investment (Th.Rs.)	Emp	Product	Annual Installed Capacity
530	Hussain Mills Ltd Bahawalpur Road	4510577, Wwww.Hussaingroup.Com	Textile Spinning	2001	649500	502	Cotton Yarn	21672 Spindles
531	Hussain Mills Ltd Fazalabad Vehari Road	6529088, Wwww.Hussaingroup.Com	Textile Spinning	1987	800000	1275	Cotton Yarn	28008 Spindles, 2000 Rotors
532	Khurshid Nazir Textile Mills (Pvt) Ltd 3 le	6539779	Textile Spinning	2005	25000	5	Cotton Yarn	1440 Spindles
533	Masood Fabrics Spinning Mills, 22-C Industrial Estate	6539470	Textile Spinning	1992	6200	35	Cotton Yarn	250 Rotors
534	Multan Spinging Mills Ltd. Mehrabad Khanewal Road	6740611-711-811	Textile Spinning	1987	289454	203	Cotton Yarn	12480 Spindles
535	Nauroz Associates (Pvt) Ltd Vehari Road	4231444, 527261	Textile Spinning	1983	91000	180	Cotton Yarn	12400 Spindles
536	Sadiq Textile Mills (Pvt) Ltd 24 Km Vehari Road	4592331-32	Textile Spinning	2002	16500	C	Cotton Yarn	5000 Spindles
537	Safoora Sons, Plot # 41/B, Industrial Estate	0300-9638793	Textile Spinning	1991	3500	C	Cotton Yarn	200 Spindles
538	Sheer Muhammad Ansar Colony, Cantonment Area	4512770	Textile Spinning	1970	800	5	Cotton Yarn	128 Spindles
539	Three Star Hosiery Mills (Pvt) Ltd le / Hamidpur Bye Pass	6536948, Wwww.Threestarspk.Com	Textile Spinning	1984	459794	1940	Cotton Yarn	28008 Spindles

Sr. No.	Name / Address of unit	Phone No. / Website	Industry	Estb. Year	Investment (Th.Rs.)	Emp	Product	Annual Installed Capacity
540	Abdul Aziz Power Looms Javid Nagar Shujabad		Textile Weaving	1990	5250	15	Grey Cloth	50 Looms
541	Adeel Cloth Industry Chah Talabwala Awanpura Hafiz Jamal Road	4553265	Textile Weaving	1975	17000	70	Grey Cloth	48 Looms
542	Ahmad Fine Textile Mills Ltd 40 Km Bahawalpur Road	4510479	Textile Weaving	2000	564723	415	Grey Cloth	96 Looms
543	Ahmed Fine Textile Mills Ltd 25 Km Qadirpur Rawan Bohra Street	4589121	Textile Weaving	2002	554322	409	Grey Cloth	96 Looms
544	Ahmed Weaving Mills Qadirpur Rawan		Textile Weaving	2005	1100	25	Grey Cloth	36 Looms
545	Fazal Rehman Fabrics Ltd., Khanewal Road	4586771-2	Textile Weaving	2007	155153	110	Grey Cloth	100 Looms
546	Gultex (Pvt) Ltd Vehari Road	6527853	Textile Weaving	1967	52000	96	Bed Sheets	75 Looms
547	Haji Abdul Haq Sizing Factory Budhla Road Multan		Textile Weaving	1985	600	5	Grey Cloth	70 Looms
548	Hussain Industries 17 Kassi Vehari Road	4552326	Textile Weaving	1994	18000	235	Grey Cloth	150 Looms
549	Hussain Mills Ltd., Khanewal Road	6528245, 6527238	Textile Weaving	2007	155153	100	Grey Cloth	100 Looms

Sr. No.	Name / Address of unit	Phone No. / Website	Industry	Estb. Year	Investment (Th.Rs.)	Emp	Product	Annual Installed Capacity
550	Lal Industries, Khanewal Road	6774134, 4554234	Textile Weaving	2008	17000	45	Grey Cloth	50 Looms
551	Mehmood Fabrics (Pvt) Ltd. Khanewal Road	0300-6381182	Textile Weaving	1992	11500	11	Gray Cloth	64 Looms
552	Naem Power Looms Chah Talabwala Awanpura Hafiz Jamal Road	6772045	Textile Weaving	1996	7000	42	Grey Cloth	68 Looms
553	Quality Weaving Mills Industrial Estate		Textile Weaving	1987	4000	25	Grey Cloth	150 Looms
554	R.M. Fabrics Khanewal Road	6774821	Textile Weaving	1999	15500	65	Grey Cloth	72 Looms
555	Rehman Weaving Mills (Pvt) Ltd. Khanewal Road	4553118	Textile Weaving	1992	11800	55	Gray Cloth	80 Looms
556	Reliance Textile Mills Near Grid Station Khanewal Road	4580182-3	Textile Weaving	1990	341840	828	Gray Cloth	272 Looms
557	Roomi Faabrics Ltd 15 Km Khanewal Rd	4511262, 4549711	Textile Weaving	2002	612960	300	Grey Cloth	74 Looms
558	Sh. Muhammad Rashid & Co (Pvt) Ltd 61-E, Industrial Estate	0333-6102223	Textile Weaving	1995	8000	C	Grey Cloth	100 Looms
559	Shahab Industry 30 Home Export Zone	6771526	Textile Weaving	1998	8600	48	Grey Cloth	46 Looms

Sr. No.	Name / Address of unit	Phone No. / Website	Industry	Estb. Year	Investment (Th.Rs.)	Emp	Product	Annual Installed Capacity
560	Sharif International Weaving (Pvt) Ltd Khanewal Road		Textile Weaving	1999	8000	40	Grey Cloth	48 Looms
561	Shujabad Industries, Khanewal Road	6243601	Textile Weaving	2007	10000	120	Grey Cloth	100 Looms
562	Siddique Fabrics, Khanewal Road	4550374	Textile Weaving	2008	5300	100	Grey Cloth	72 Looms
563	Waqas Spira Textile Mills Vehari Road	6522813	Textile Weaving	1991	1450	C	Gray Cloth	108 Looms
564	Cotton City St.No.1 Ansar Colony	6772281-2	Towel	2000	10000	85	Towels	Power Looms 150 Nos, Machines 65
565	Hometex Street No.1 Ansar Colony	6777016	Towel	2003	5000	100	Towels	50 Looms
566	Lal Industries 5 Hometex Export Zone	4554234, 6774234	Towel	2000	10000	81	Towels	Power Looms 32 Nos, Machines 50
567	Limk Textile 68-Industrial Estate	6539762	Towel	1996	2500	2	Towels	50 Looms
568	A&B Industrial Gases Bahawalpur Road		Vegetable Ghee And Cooking Oil	1964	20000	C	Vegetable Ghee	21500 M.Tons
569	Al-Hilal Vegetable Ghee Mills (Pvt) Ltd. P.O.Box No.309 Sultan Nagar Vehari Road	4551178	Vegetable Ghee And Cooking Oil	1960	155000	176	Vegetable Ghee/Cooking Oil	54000 M.Tons

Sr. No.	Name / Address of unit	Phone No. / Website	Industry	Estb. Year	Investment (Th.Rs.)	Emp	Product	Annual Installed Capacity
570	Al-Shamas Industries (Pvt) Ltd Bahawalpur Road		Vegetable Ghee And Cooking Oil	1992	20000	C	Vegetable Ghee/Cooking Oil	12600 M.Tons
571	Fatima Enterprises Bahawalpur Road	4234574	Vegetable Ghee And Cooking Oil	1976	8029	5	Vegetable Ghee/Cooking Oil	15000 M.Tons
572	Fazal Vegatable Products Bahawalpur Road	4230478-4234574	Vegetable Ghee And Cooking Oil	1982	17913	28	Vegetable Ghee/ Cooking Oil	15000 M.Tons
573	Hafeez Ghee & General Mills (Pvt) Ltd. Bahawalpur Road	6526513	Vegetable Ghee And Cooking Oil	1994	22000	133	Vegetable Ghee / Cooking Oil	34000 M.Tons
574	Hussain Industries (Pvt) Ltd., New Central Jail Road	6529637	Vegetable Ghee And Cooking Oil	1984	15000	15	Vegetable Ghee	18000 M.Tons
575	Prime Vegetable Ghee Industries, 4-5/J Industrial Estate	6537434	Vegetable Ghee And Cooking Oil	1980	35000	C	Vegetable Ghee / Cooking Oil	20000 M.Tons
576	Sh. Fazal-Ur-Rehman & Sons (Rose Ghee Mills) Ltd. Vehari Road		Vegetable Ghee And Cooking Oil	1959	2062	C	Vegetable Ghee / Cooking Oil	28000 M.Tons
577	Shandar Vegetable Ghee Mills Bahawalpur Road		Vegetable Ghee And Cooking Oil	1998	53500	C	Vegetable Ghee / Cooking Oil	30800 M.Tons

Sr. No.	Name / Address of unit	Phone No. / Website	Industry	Estb. Year	Investment (Th.Rs.)	Emp	Product	Annual Installed Capacity
578	Akhtar Industries (Pvt) Ltd., Plot 39 Industrial Estate	6539583	Wool Scouring	1993	1400	8	Wool Scouring	300 M.Tons
579	Sm Nazir & Co Water Works Road	6537112	Wool Scouring	1977	3748	214	Wool Scouring	1950 M.Tons/450 Spindles, 25 Looms
580	Zafar Ali And Sons 49-B Industrial Estate	6539733	Wool Scouring	1988	1500	9	Wool Scouring	1500 M.Tons
581	Zaffar Industries 35-Industrial Estate	6539157	Wool Scouring	1990	1000	5	Wool Scouring	100 M.Tons / 250 Spindles
582	Excellent Woollen Weaving 24-A Industrial Estate	6539696	Woollen Textile Spinning /Weaving	1992	3000	14	Woollen Yarn	200 Spindles
583	Faisal Wool Co. 38 Industrial Estate	4584349	Woollen Textile Spinning /Weaving	1983	2000	14	Woollen Yarn	100 Spindles
584	Fatima Woollen Mills Bahawal Pur Road	4231837	Woollen Textile Spinning /Weaving	1980	7000	70	Woollen Yarn	624 Spindles
585	Jami Wool Co. 49-A Industrial estate	6539733	Woollen Textile Spinning /Weaving	1988	1500	8	Wool Scouring	1500 M.Tons
586	Manzoor Industries Mehmood abad Colony	4551113	Woollen Textile Spinning /Weaving	1974	11000	35	Woollen Yarn	400 Spindles
587	Multan Woollen Spinnery (Pvt) Ltd. 21-A Industrial Estate	6537592	Woollen Textile Spinning /Weaving	1980	15000	112	Woollen Yarn	912 Spindles

Sr. No.	Name / Address of unit	Phone No. / Website	Industry	Estb. Year	Investment (Th.Rs.)	Emp	Product	Annual Installed Capacity
588	Raheem Woollen Mills Bahawalpur Road	6528639	Woollen Textile Spinning /Weaving	1980	3000	18	Woollen Yam	400 Spindles
589	Zaib Impex, 24/B IE	6539530, 4551113	Woollen Textile Spinning /Weaving	2002	2650	21	Carpet Yam	5 Machines

Source: Directorate of Industries, Punjab

LIST OF CONTACT NUMBERS

Directorate of Industries Punjab

Designation	Contact
Director Industries, Punjab	Tel: +92 (42)-99211520-1 Fax: +92 (42)-99211522 dipunjab@gmail.com
Additional Director Industries	Tel: +92 (42)-99211531 +92 (42)-99212752 Fax: +92 (42)-99212753
Joint Director (Development)	Tel: +92 (42)-99211526
Senior Economist	Tel: +92 (42)-99211533
Staff Economist	Tel: +92 (42)-99211534
Deputy Director (Admin)	Tel: +92 (42)-99211528
Deputy Director (Development)	Tel: +92 (42)-99211528
Deputy Director (Planning)	Tel: +92 (42)-99211530
Assistant Director (Admin)	Tel: +92 (42)-99211529
Assistant Director (Planning)	Tel: +92 (42)-99211530
Assistant Director (Statistics)	Tel: +92 (42)-99211524
Assistant Registrar	Tel: +92 (42)-99211523
Librarian	Tel: +92 (42)-99213010
District Officer (E&IP), Multan	Tel: +92 (61)-4548766

Other Relevant Departments

Department	Contact
Secretary, Industries, Commerce & Investment Department, Govt. of the Punjab	Tel: +92 (42) 99210534-5 Fax: +92 (42) 99210536
Chamber of Commerce & Industry, Multan	+92 (61) 4543530, Fax: +92 (61) 4570463 mccimultan@gamil.com
Punjab Board of Investment & Trade (PBIT)	Tel: +92 (42) 99205201 info@pbit.gop.pk
Small & Medium Enterprises Development Authority (SMEDA)	Tel: +92(42)-111-111-456 Fax: +92 (42) 36304926-7 info@smeda.org.pk

Punjab Industrial Estates Development and Management Company (PIEDMC)	Tel: +92 (42) 35297203-6 Fax: +92 (42) 35297207 info@pie.com.pk
Punjab Small Industries Corporation (PSIC)	Tel: +92 (42) 99200453

BIBLIOGRAPHY

- Punjab Development Statistics 2011, Bureau of Statistics, Government of the Punjab
- The Urban Unit, Planning & Development Department, Government of the Punjab.
- Technical Education and Vocational Training Authority
- Chief Inspector of Boilers, Directorate of Industries, Punjab
- Directorate of Agriculture, Crop Reporting Service, Punjab
- Chief Conservator of Forest Planning, Monitoring and Evaluation, Punjab
- Directorate General (Ext), Livestock & Dairy Development Punjab
- Directorate General Mines & Minerals, Punjab
- Punjab Small Industries Corporation
- Punjab Industrial Estates Development and Management Company
- Faisalabad Industrial Estates Development and Management Company
- Industries, Commerce & Investment Department, Government of the Punjab
- District Officers (Enterprise & Investment Promotion) as well as District Administration
- Export Processing Zones Authority
- Board of Investment, Government of Pakistan
- Website of Stat Bank of Pakistan
- Ministry of Commerce, Govt. of Pakistan
- Directory of Industrial Establishments Punjab, Directorate of Industries, Punjab

