

# District Pre-Investment Study - 2012

---

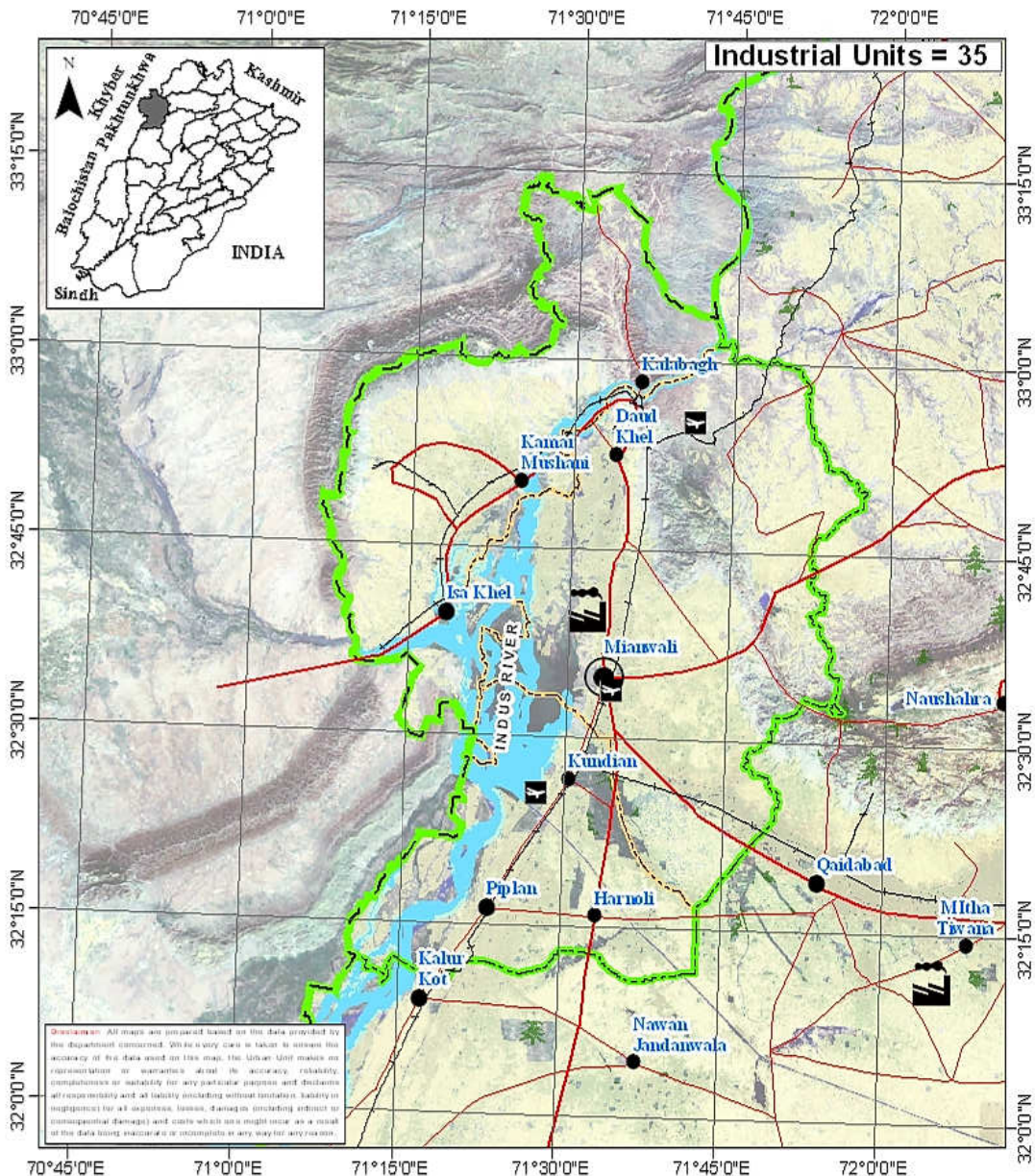
Mianwali



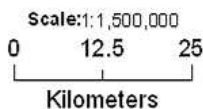
---

Directorate of Industries, Punjab  
Poonch House, Multan Road, Lahore.

# District Mianwali



Map No.: MNW-01 Date: 21-01-2013



## Legend

### Administrative:

- Provincial Boundary
- District Boundary
- Tehsil Boundary
- Divisional Headquarter
- District Headquarter
- Tehsil Headquarter

### Transportation:

- Motorway
- Provincial Highway
- Primary Road
- Intercity Road
- Pakistan Railway
- Airport

### Landuse:

- River
- Agricultural Land
- Forest
- Industrial Estate



**THE URBAN UNIT**

Urban Unit, District & Regional Office, District Mianwali, Pakistan



## Director's Message

After spending past two years in Directorate of Industries, Punjab, I feel very privileged to be writing this message as Director Industries, Punjab.



This is the time we publish the 7<sup>th</sup> edition of the District Pre-Investment Studies of 36 Districts of Punjab, which has now become synonymous with our commitment to helping Industrialists, new entrepreneurs as well as Researchers. As Director Industries Punjab, I have seen much change, like:

- Relocation plan for the industrial units located within residential areas to industrial estates / positive areas declared by the District Governments.
- Adaptation of Boilers & Pressure Vessels Ordinance 2002.
- Conduct of Census of Manufacturing Industries.
- A scheme "Improvement and Up-gradation of Boilers Inspection Wing" has been approved by the Planning & Development Department, Government of the Punjab with the cost of Rs.10 Million.
- A Scheme "Sports Goods and Material Testing Laboratory" is under process in Planning & Development Department, Government of the Punjab. The estimated cost of the scheme is Rs.450 Million.
- The proposal for Capacity Building of Directorate of Industries Punjab is under process in Industries, Commerce & Investment Department, Government of the Punjab with the estimated cost of Rs.109.75 Million.
- We launch our website [www.doi.pitb.gov.pk](http://www.doi.pitb.gov.pk).

Looking ahead, we are focused on accelerating the execution of growth and promote industrial investment in the province. I am incredibly excited about this and truly believe the best of time for industrial investment is yet to come, Insha Allah.

**(Muhammad Siddique Sheikh)**  
Director Industries, Punjab

## Preface

Pre-investment studies for the districts in the Punjab were first published by the Directorate of Industries and Mineral Development, Punjab in the year 1979, with the prime objective of providing data which might interest private entrepreneurs and the framers of the Provincial and National Strategies in the industrial sector.

The second, third, fourth, fifth and sixth series of Pre-investment Studies for all districts of Punjab were published in 1983, 1992, 2002, 2006 and 2009 respectively. The present edition is seventh in the series.

This study basically updates the information contained in sixth series of district pre-investment studies. Efforts have been made to provide latest information collected through published sources, offices of the respective Government Departments/Agencies and District Offices of Industries Department. Quality addition of Industrial Policy Framework, recently promulgated Special Economic Zone Act 2012, Strategic Trade Policy Framework (2012-15) and Digital Maps by Urban Unit has improved these studies significantly.

The information has been updated in respect of population, manpower, production of agriculture crops, fruits, vegetables, livestock, forest resources, ores/minerals, infrastructural facilities such as technical/vocational training facilities, communication net-work, sub-soil water quality/effluent disposal

facilities, power/gas supply, tele-communication facilities, industrial estates, dry ports, industrial financing facilities, loaning scheme of PSIC, industrial policy, investment policy, fiscal incentives, Special Economic Zone Act 2012 and Strategic Trade Policy Framework (2012-15) etc. New policy measures regarding declaration of negative and specified positive areas have also been incorporated.

The study also includes information regarding existing industrial pattern, industry wise installed capacities and details regarding existing major industrial units in each district.

Effort has been made to identify various industries considering the availability of raw materials, skilled labour, linkage between industrial units and local/national/international demand. The suggested industries are, however, merely of indicative nature and it is advisable that prospective investors should conduct detailed feasibility report before making final decision for investment.

It is worthwhile to mention that industrial sector in Punjab has grown gradually from 6,223 industrial units in 1975 to 17,857 industrial undertakings in 2010. Sectoral growth has also been registered, resulting in substantial value addition. Value addition chain can be maximized by processing the agricultural industrial waste like rice husk, cotton stock, maize and corn cob. Herbal products is another untapped area. Live Stock, Dairy Development and poultry are fast growing sectors. Processing of food products can fetch handsome dividends. Currently information technology sector is growing by 39% annually in Pakistan. Fashion

industry is also developing rapidly. Similarly, chemical sector has lot to offer by utilizing the available mineral resources as raw material.

Issue of energy shortage can be addressed by dealing with power generation as an industry. Local as well as foreign investors have golden opportunity to set up power generation stations based on coal and other alternate fuels, under the captive power plants policy allowed in the newly promulgated SEZ Act, 2012. Punjab offers very good opportunity to the local as well as foreign investors to set up small, medium and heavy industries in variety of sectors. It has a growing market of over 90 million consumers, abundant manpower / labour force and cheap raw material with reasonably controlled law & order.

The Industries, Commerce & Investment Department has sufficient institutional frame work of attached and autonomous bodies to look after the industrial issues. Directorate of Industries, Small Industries Corporation (PSIC), Board of Investment (PBIT), Punjab Industrial Estates Development and Management Company (PIEDMC), Faisalabad Industrial Estates Development and Management Company (FIEDMC) have blend of professionals from the public as well as private sector. These legal entities are working in close coordination with the Chambers of Commerce and Industries systematically to promote industrialization and trade.

Development schemes regarding establishment of Industrial Resource Centre at the Directorate of Industries, setting up Sports & Material Testing Lab at EPZ, Sambrial and Industrial Safety Institute are under consideration with the Planning and Development

Department. Completion of these schemes will definitely help in promotion of industrialization process with enhanced industrial safety.

I must record my appreciation to Mr. Muhammad Akram Awan, Senior Economist, who effectively planned, coordinated and provided the guidance to his team members for completion of this study. Credit also goes to Mr. Muhammad Jamil Chishty, Staff Economist for his dedicated support rendered in the completion process of this study and Mr. Waseem Haider, Stenographer, for his tireless typing and composition work on computer.

I am grateful to all the District Officers, Enterprise & Investment Promotion who provided the relevant information of their respective districts for incorporating in pre-investment studies. I am also thankful to various Provincial Departments for supplying the required data to the Directorate of Industries. My special thanks are due to Dr. Nasir Javed, Project Director, Urban Unit for the provision of digital maps and the Punjab Printing Press.

Any suggestion for the improvement of the study will be welcomed.

Dec. 31, 2012

**(Muhammad Siddique Sheikh)**  
Director Industries, Punjab

# Contents

---

Section	Page
<b>District at a Glance</b>	<b>1</b>
<b>1. Geographical Conditions</b>	<b>3</b>
1.1 Brief Description of the District	3
1.2 Climate and General Soil Conditions	3
<b>2. Man-Power</b>	<b>5</b>
2.1 Total Population of the District	5
2.2 Man-Power Availability	6
2.3 Traditional Crafts	10
2.4 Geographical Indications	10
<b>3. Natural Resources</b>	<b>11</b>
3.1 Agriculture	11
a) Main Crops	11
b) Main Fruits	12
c) Main Vegetables	12
3.2 Forests	13
a) Location of Forests and Area under Afforestation	13
b) Production of Timber and Fire-wood	14
3.3 Livestock Population	14
a) Animal Population	14
b) Poultry Population	15
c) Availability of Hides/Skins & Slaughter House Wastes	15
d) Production of Wool	15
3.4 Ores and Minerals	16
a) Reserves	16
b) Major Minerals	16
c) Industrial Uses of Minerals	17

<b>4. Infrastructural Facilities</b>	<b>19</b>
4.1 Communication Network	19
a) Road Links	19
b) Rail Links	19
4.2 General Quality and Availability of Sub Soil Water	19
4.3 Effluent Disposal Facilities	19
4.4 Power Supply	20
4.5 Natural Gas Availability	20
4.6 Telecommunication Facilities	20
4.7 Social Infrastructural Facilities	20
4.8 Industrial Estates	21
4.9 Dry Port	21
4.10 Industrial Policy	21
4.11 Declaration of Negative Areas	26
4.12 Declaration of Positive Areas	28
4.13 Incentives for Investors to set a unit in EPZs	29
4.14 Pakistan's Investment Policy – Key Features	32
4.15 Industrial Financing Facilities	34
4.16 Salient Features of Loaning Scheme of PSIC	37
4.17 Salient Features of the SEZ Bill 2012	39
4.18 Strategic Trade Policy Frame Work (2012-2015)	40
<b>5. Existing Pattern of Industrial Development</b>	<b>47</b>
5.1 Description of Existing Industry	47
<b>6. Future Industrial Potential</b>	<b>49</b>
6.1 Agriculture	49
6.2 Livestock	50
6.3 Forest	50
6.4 Mineral	51
6.5 Industry	51
6.6 Demand Based Industries	52
6.7 List of Identified Projects	52

---

<b>Annex</b>	<b>Page</b>
<b>Directory of Industrial Establishment</b>	<b>55</b>
<b>List of Contact Nos.</b>	<b>59</b>
<b>Bibliography</b>	<b>61</b>

## DISTRICT AT A GLANCE

1	Population (000 Numbers)	:	1,328
2	Area (Square Kilometres)	:	5,840
3	Population Density (per sq. km.)	:	227
4	Tehsils / Towns	:	Mianwali, Isakhel and Piplan.
5	Main Crops	:	Wheat, Sugarcane, Gram, Bajra and Cotton.
6	Main Fruits	:	Citrus, Guava and Mango.
7	Main Vegetables	:	Onion, Turnip and Tomato.
8	Forest Resources (Area in Acres)	:	38,729
9	Mineral Resources	:	Lime Stone, Argillaceous Clay, Fire Clay, Gypsum, Silica Sand, Rock Salt, Iron Ore, Ochers, Latrite, Dolomite, Coal, China, Clay, Calcite, Bauxite, Celestine, Gypsum LS, Lime Stone LS and Marble.
10	Total Metalled Roads (KM)	:	1,680.74
11	No. of Grid Stations	:	12
12	No. of Telephone Exchanges	:	31
13	Number of Industrial Units (Large Medium and Some Small Selected Sectors)	:	35

- 14 Type of Industrial Units : Cement, Cotton Ginning & Pressing, Fertilizer, Flour Mills, Iron & Steel Re-Rolling Mills, Power Generation, Soap & Detergents and Unani Medicines

# **CHAPTER - I**

## **GEOGRAPHICAL CONDITIONS**

### **1.1 BRIEF DESCRIPTION OF THE DISTRICT**

District Mianwali bounded by district Attock on North-East, Chakwal and Khushab districts on East and Bhakkar on South and NWFP on its West and North-West. River Indus flows across the district from North to South. Three branches of the Thal Canal Emerging from Jinnah Barrage on river Indus near Kalabagh irrigate the vast areas. Another canal called Chashma Link Canal connects river Indus with river Jhelum through Chashma Barrage.

District Mianwali is spread over an area of 5,840 square kilometres and comprises the tehsils of:-

- i. Mianwali
- ii. Isakhel
- iii. Piplan

### **1.2 CLIMATE AND GENERAL SOIL CONDITIONS**

The district has extreme hot and cold climate. The maximum temperature during the summer shoots up to 51°C while the minimum temperature recorded in winter is as low as 2°C. The average rainfall in the district is about 250 mm.

District Mianwali mainly comprises hills, plateaus and plains.

## CHAPTER - II

### MAN POWER

#### 2.1 TOTAL POPULATION OF THE DISTRICT

According to Punjab Development Statistics 2011, total population of Mianwali district is 1,328 thousand persons out of which 666 thousand are male and 662 thousand are females. Density of population in the district is 227 persons per square kilometre.

Tehsil wise distribution of Urban and Rural population is given in Table-1:

**TABLE-1**

#### Town-Wise Distribution of Urban & Rural Population

Town	Population (Thousand Nos.)		
	Urban	Rural	Total
Mianwali	129	525	654
Isakhel	55	280	335
Piplan	92	247	339
<b>Total</b>	<b>276</b>	<b>1052</b>	<b>1328</b>

Source: Punjab Development Statistics, 2011

## 2.2 MAN POWER AVAILABILITY

As regards availability of skilled labour, there are 13 technical / commercial / vocational institutions (7 for men, 6 for women) imparting training in various trades e.g. mechanical, electrical, auto-engineering, welding, wood working and commerce. Vocational institutions for women impart training in hand/machine embroidery, stitching and knitting, etc. In all about 2,847 trained technicians/artisans/workers are turning out every year. Details are given in Table-2.

**TABLE - 2**

### Commercial and Technical Institutions

Sr #	Name & Description of Commercial / Technical Training Institutions	Types of Training Courses Offered	Duration of Course	Average No of Students Enrolled / Session
<b>For Men</b>				
1	Govt. College of Commerce, Mianwali	Certificate in Computer Application, M.Com B.Com D.Com	6 to 24 Months	680
2	Govt. Institute of Commerce, Isakhel, Mianwali Banu Road, Kala Bagh Road, Bimranwala.	Certificate in Computer Application, D.Com	6 to 24 Months	143

3	Govt. Technical Training Institute, Talagang Road, Near Govt. Degree College, Wahdhi, Arayanwali, Mianwali	DAE (Electrical, Electronics), G-II (Electrical, Auto Mechanic, Draftsman Civil, Machinist, HVACRG	12 to 36 Months	555
4	Govt. Technical Training Centre (ABAD), Isakhel	G-III (Electrical, Auto & Farm Machinery, Welder, Machine Shop) Wood Work	12 Months	50
5	Govt. Technical Training Centre, (DMTC) Kundian, Mianwali	G-III (Electrician, Auto & Farm Machinery, Machinist, Welder)	12 Months	43
6	Govt. College of Technology, 7-KM Kala Bagh Road	Auto Diesel, Electrical, Civil, Mechanical, DAE, Microsoft IT Academy.	3 to 36 Months	325
7	Govt. Technical Training Centre, Piplan.	Electrician, Welder, Plumber.	6 Months	90

<b>For Women</b>				
8	Govt. Vocational Training Institute, Kamar Mushani, District Mianwali.	Certificate in Computer Application, Machine Embroidery, Beautician, Certificate Vocational Girls, Domestic Tailoring, Microsoft IT Academy.	3 to 12 Months	189
9	Govt. Institute of Commerce, House No.B/43, Khan Zaman Street, Near MCB Bank, Balo Khel Road, Mianwali	Certificate in Computer Application, D.Com, B.Com (Degree), Spoken English	4 to 24 Months	212
10	Govt. Vocational Training Institute, Dr. Azeem Street, Near Inam Ullah Khan House, Mianwali	Certificate in Computer Application, Beautician, Vocational Certificate, Vocational Diploma	6 to 24 Months	103

11	Govt. Vocational Training Institute (VTC, ABAD), Near Railway Crossing, Khundian Road, Sultan Town, Mianwali	Certificate in Computer Application, Dress Designing & Making (Diploma), Beautician, Domestic Tailoring, Diploma in Vocational Girls, Diploma in Vocational Teacher Training.	6 to 24 Months	154
12	Govt. Vocational Training Institute, Mohallah Barmlran Wala, Isakhel	Beautician, Domestic Tailoring, Dress Designing, Diploma in Vocational Girls, Certificate in Computer Applications	6 to 24 months	198
13	Government Vocational Institute, Isa Khel.	Tailoring, Hand / Machine Embroidery	3 to 6 Months	105

Source: TEVTA

## **2.3 TRADITIONAL CRAFTS**

The traditional crafts of district Mianwali are making of leather chappals and Peshawary chappals decorated with tilla.

## **2.4 GEOGRAPHICAL INDICATIONS**

The Project Director (Geographical Indications), Industries, Commerce & Investment Department, Government of the Punjab has identified the following Important Geographical Indications in the district:

- Tobacco
- Salt Tiles / Decoration Pieces

## CHAPTER - III

### NATURAL RESOURCES

#### 3.1 AGRICULTURE

##### a) Main Crops

Wheat, Sugarcane, Gram, Bajra and Cotton are the main crops grown in the district. Production of these crops during the period 2008-09 to 2010-11 is given in Table - 3.

**TABLE-3**

**Production of Main Crops  
(2008-09 to 2010-11)**

Crop	Production (Th. M.Tons)		
	2008-09	2009-10	2010-11
Wheat	332.75	382.25	411.98
Sugarcane	108.43	175.3	185.13
Gram	18.7	17.9	21.0
Bajra	13.0	10.2	9.7
Cotton (000 Bales)	50.07	72.2	54.65

Source: Directorate of Agriculture, Crop Reporting Service, Punjab

Besides, Ground Nut, Rice, Moong, Mash and Masoor are also grown in minor quantities in the district.

b) Main Fruits

Citrus, Guava and Mango are main fruits grown in the district. Production of these fruits during the period 2008-09 to 2010-11 is given in Table - 4

**TABLE-4**

**Production of Main Fruits  
(2008-09 to 2010-11)**

Fruit	Production (M.Tons)		
	2008-09	2009-10	2010-11
Citrus	17178	18767	19860
Guava	1192	1273	1511
Mango	523	437	515

Source: Directorate of Agriculture, Crop Reporting Service, Punjab

Besides, Banana, Pomegranate, Dates and Figs are also grown in minor quantities in the district.

c) Main Vegetables

Onion, Turnip and Tomato are main vegetables grown in the district. Production of these vegetables during the period 2008-09 to 2010-11 is given in Table - 5

**TABLE-5**

**Production of Main Vegetables  
(2008-09 to 2010-11)**

Vegetable	Production (M.Tons)		
	2008-09	2009-10	2010-11
Onion	12536	12007	11801
Turnip	1050	1030	1096
Tomato	1519	1478	1372

Source: Directorate of Agriculture, Crop Reporting Service, Punjab

Besides, Bottle Gourd, Bitter Gourd, Chillies, Carrot, Cauliflower, Peas and Garlic are also grown in the district in minor quantities.

### 3.2 FORESTS

#### a) Location of Forests and Area under Afforestation

An area of 38,729 Acres is under forests, which is about 2.76 % of the total area of the district. There is also linear plantation of 1,080 Km alongside the roads/rails/canals in the district. Trees grown in the area are Mulbury, Bakain, Eucalyptus, Simbal, Popular, Sirin, Acacia, etc.

## b) Production of Timber and Firewood

The production of Timber and Fire-Wood in the district during the period 2008-09 to 2010-11 is given in Table 6.

**TABLE-6**

**Production of Timber & Firewood  
(2008-09 to 2010-11)**

Year	Production (Cubic Meter)	
	Timber	Firewood
2008-09	10953.23	1200.11
2009-10	5268.79	1747.30
2010-11	2188.08	---

Source: Forestry, Wildlife and Fisheries Department

## 3.3 LIVESTOCK POPULATION

### a) Animal Population

The animal population of the district is given in Table - 7.

**TABLE - 7**

**ANIMAL POPULATION**

Animals	Population (Th Heads)
Cattle	553
Buffaloes	254
Sheep	686
Goats	986

Source: Livestock & Dairy Development Department.

## b) Poultry Population

As per Punjab Development Statistics 2011 there are 130 broiler and 70 layer poultry farms in the district having rearing capacity of 1,610 and 156 thousand birds respectively. There is also 1 breeding farms having rearing capacity of 5 thousand birds.

## c) Availability of Hides / Skins and Slaughter House Wastes

As per Punjab Development Statistics 2011, 1,52,400 animals were slaughtered in recognized / un-recognized slaughter houses in the district during the year 2009-10 which is a reasonable estimate of the availability of hides and skins in the district.

The availability of slaughter house by - products is estimated as under:-

Blood	53.79 M.Tons
Bones	259.99 M.Tons
Tallow	52.73 M.Tons

## d) Production of Wool

The sheep population of 686 thousand heads in the district is expected to yield about 686 M.Tons of coarse wool annually.

### 3.4 ORES AND MINERALS

#### a) Reserves

Minerals like Argillaceous Clay, Lime Stone, Gypsum, Coal, Fireclay, Silica Sand, Iron Ore, Dolomite, Rock Salt, Bauxite and Ochres are exploited commercially in the district. Iron Ore was discovered in Kalabagh in early fifties, which is commonly known as Chichali Iron Ore.

#### b) Major Minerals

Production of the major minerals for the period 2008-09 to 2010-11 is given in Table-8.

**TABLE-8**

**Production of Minerals  
(2008-09 to 2010-11)**

Mineral	Production (Th. M.Tons)		
	2008-09	2009-10	2010-11
Lime Stone	3643665	3679944	3093077
Argillaceous Clay	960622	854361	929646
Fire Clay	290776	278751	225319
Gypsum	261245	288456	190940
Silica Sand	214749	209416	106839
Rock Salt	65224	75460	61977
Iron Ore	236136	223260	73535

Ochers	40907	50359	32706
Latrite	4749	8688	1040
Dolomite	39057	11455	1455
Coal	92370	91438	71036
China Clay	9900	9650	3030
Calcite	850	285	-
Bauxite	1075	1190	530
Celestine	470	160	-
Marble	330	2450	218
Gypsum LS	-	-	137446
Lime Stone LS	-	-	34609

Source: Directorate General of Mines & Minerals, Punjab

### c) Industrial uses of Minerals

The industrial uses of major minerals are given hereunder:-

Argillaceous Clay = Cement Industry.

Bentonite = Extracting/Drilling of Oil Wells.

Coal = Brick Kiln and Thermal Power Generation.

Dolomite = Refractories.

Fireclay = Fire Bricks, Refractories, Electric Insulations, Ceramics, etc.

---

Gypsum	= Plaster of paris, cement, chemicals and soil conditioning.
Iron Ore	= Extraction of Iron, etc.
Limestone	= Cement, Sugar, Soda Ash and Lime Plaster.
Rock Salt	= Used as raw material in the manufacturing of:- i) Sodium Hydroxide. ii) Sodium Bicarbonate. iii) Sodium Carbonate.

## **CHAPTER - IV**

### **INFRASTRUCTURAL FACILITIES**

#### **4.1 COMMUNICATION NETWORK**

##### **a) Road Links**

The district has a total metalled road-length of 1680.74 Kilometres. The District is linked with Sargodha, Chakwal, Bhakkar, Khushab and Bannu (KPK) districts through metalled road.

##### **b) Rail Links**

The district is linked with Attock through railway network.

#### **4.2 GENERAL QUALITY AND AVAILABILITY OF SUB-SOIL WATER**

Under ground water resources are not adequate in the district especially in tehsil Isa Khel. The sub soil water in and around the district is suitable for industrial purposes.

#### **4.3 EFFLUENT DISPOSAL FACILITIES**

There are hill nullahs, which carry rain water from the hills to the river Indus. However, prior written

permission from Irrigation and Power Department, Government of the Punjab is necessary for discharge of effluent in these nullahs.

#### **4.4 POWER SUPPLY**

There are 12 grid stations in the district ranging in capacity from 66 KV to 220 KV.

#### **4.5 NATURAL GAS AVAILABILITY**

At present natural gas is available at Mianwali, Daudkhel, Chashma, Iskandarabad and Kundian only.

#### **4.6 TELE-COMMUNICATION FACILITIES**

There are 31 telephone exchanges operating in the district, ranging in capacities from 206 lines to 5,850 lines. Cellular phone services are available in the district.

#### **4.7 SOCIAL INFRA-STRUCTURAL FACILITIES**

Social infra-structural facilities available in the district are given in Table - 9.

TABLE - 9

**SOCIAL INFRA-STRUCTURAL FACILITIES**

Tehsil	Primary / Middle / high / higher secondary School	College	Hospital	Police station	Railway stations	Post office	Banks
Mianwali	691	7	3	9	11	19	28
Isa Khel	415	5	2	5	5	10	14
Piplan	343	4	1	3	1	7	10
Total:	1449	16	6	17	17	36	52

Source: Punjab Development Statistics 2011 / Respective District Offices.

**4.8 INDUSTRIAL ESTATE**

At present there is no industrial estate in the district.

**4.9 DRY PORT**

There is no dry port in the district.

**4.10 INDUSTRIAL POLICY**

- Foreign investors are permitted to hold 100% of the equity of industrial projects without any permission of the Government.
- No prior Government sanction is required for establishment of an industry outside Ex-Municipal Territorial Limits of Town

Committees / Municipal Corporation irrespective of its cost and size except the following covered under schedule 'C':-

- a. Arms & Ammunition.
  - b. Security Printing Currency & Mint.
  - c. High Explosives.
  - d. Radio Active Substances.
  - e. Alcoholic Beverages or Liquors.
1. No industrial unit mentioned in Schedule-A of the notification No. AEA-III-4-3-9/91, dated 30.09.2002 or industrial unit exceeding a total cost of Rs. 100.00 million shall be set up within 10 miles (16 Kms) of international border:

**List of Manufacturing Industries**

- a) Basic Metal Industry.
- b) Petro-Chemical Industries (Excluding Products Industries).
- c) Large size Machine Tool Factories (Limit of Investment to be determined).
- d) Heavy Foundry Works.
- e) Heavy Electric Complexes.
- f) Heavy Mechanical Complexes.
- g) Electronics Industries.
- h) Major Vehicle Assembly Plants.
- i) Ordnance Factories.
- j) Explosives, Nitric acid and Sulphuric acid plants.
- k) Vehicular Tires and Tubes Industries.

- l) Locomotives and Railway Carriage manufacturing plants.
  - m) Government Mint.
  - n) Security Printing Press involved in whole time printing of sensitive documents / currency notes.
  - o) Manufacture of optical glass and optics.
  - p) Nickle cadmium battery industries.
  - q) Nuclear / Separation Plants.
  - r) Large Power Generating Stations.
  - s) Large oil Storage units.
  - t) Oil refineries.
2. No industrial unit shall be set up in areas affected by flood flowing transversely in the strip of one mile of either side across the Grand Trunk Road from Shahdara Town to Muridke Town, without prior permission of the Provincial Government.
3. According to the notification No. AEA-III-3-5/2003 (Vol-III), dated 06.12.2006, “no new sugar mill shall be setup and no enlargement in capacity of the existing sugar mills is allowed in the Province”.
4. Each district Government may declare “negative area” for industry. Such “negative area” be determined by a District Committee after consultation with all stake-holders in light of general policy guidelines issued by the Industries, Commerce & Investment

Department and exemptions allowed under Schedule 'B' of this Notification as under:

**List of Service Industries**

- a) Furniture (excluding Band Saw) and also excluding storing Timber / Wood.
- b) Tailoring/ Readymade garments.
- c) Laundry / Dry Cleaning.
- d) Bakery (excluding confectionery).
- e) Syrups ( excluding squashes)
- f) Cosmetics.
- g) Service workshop.
- h) Cereal Products like vermicilles.
- i) Candles making.
- j) Printing and Packaging.
- k) Hand loom carpet weaving.
- l) Hotels.
- m) Bidi manufacturing.
- n) Handmade shoes / shoe repairing workshop.
- o) Spooling and thread balls.
- p) Small Hosiery units employing not more than 10 workers.
- q) Atta Chakkies.
- r) Installation of Chaff cutters.
- s) Cotton Grading.
- t) Other small industrial undertakings which do not fall under the Sixth schedule of the Punjab Local Government Ordinance, 2001.

“Other small industrial undertakings” would mean an industrial undertaking in which the total fixed assets (including the cost of land)

do not exceed Rs.1.0 million (Rupees one million).

5. No industrial unit mentioned in Schedule 'C' of this Notification shall be set up anywhere in the Punjab without prior approval of the Government.
6. The Government reserves the right to refuse establishment / enhancement of any industrial undertaking which is in contravention of the public interest, ecology or any other law / rules for the time being in force.
7. The Government may relax any of the provisions of this notification in case of a particular unit or industry or class of units or industries.
8. NOC from Environment Protection Department, Govt. of the Punjab is required for setting up new Industries.
  - Tourism has been given the status of industry in accordance with Ministry of Industries & Production Circular No. 1-129/99-INV-IV dated 2<sup>nd</sup> August 1999.
  - The Housing and Construction Sector has also been declared as industry (Finance Division Notification No. 10(10)/IF-11/98, dated 07.04.1999 and 04.06.1999.

- In accordance with Government notification No. 3(2)/97-INV-IV dated 05.05.1997, Computer Software and Information Technology (IT) have been declared as Industry.

#### 4.11 DECLARATION OF NEGATIVE AREAS

In pursuance of the Clause 4 of the Location Policy notified on 30-09-2002, by the Industries, Commerce & Investment Department, Government of the Punjab, the District Govt. Mianwali has declared the following negative areas:-

- a) Limits of Municipal Committee Mianwali.
- b) Jhambra Sharqi and Gharbi, Zalla Shumali (Sensitive Area).
- c) Area up to 1 Km PAF Base Mianwali.
- d) Limits of Revenue state Muhammad Shasrif Wali. Fateh Khanwala, Maddat Wala Gul Haji Shah Wala, Tari Khel Katcha, Nornaga. Muhammad Wala, Chak Muhammadi Wali, Doasari, Rokhari Katcha. Shahbaz Khel Katcha, Dhop Sasri, Bukhasara. Handal Wala, Utra Kallan, Utran Khurd. Malang Shah Wala. NAD Shah Wala. Noor Hasham Shah Wala. Rustam Wala Mochh Katcha (Flood effected area).
- e) Revenue Estate Daud Khel Thathi. Dher Umaid Ali Shah, Pai Khel, Pacca Muhammad Yar Wala. Tari Khel Pacca Khawja Abad Qureshian,

Shahbaz Khel Pacca. Yaroo Khel, Mianwali Zalla Janubi (Water Pollution).

- f) Area falling within half kilometers of Thal Canal.
- g) Mian Khoo, Sohrab Wala Ban Hafiz Jee. Azeem Wala Abba Khel Gulmiri and Shadia.

### ***Tehsil Piplan***

- a) Qanu Goi Kundian Pakka/Khola.
- b) Qanu Goi Piplan Pakka.
- c) Qanu Goi Alluwali.
- d) Qanu Goi Hernoli.

### ***Tehsil Isa Khel***

- a) All the three committee areas i.e.
- b) Municipal Limits of TMA Isa Khel.
- c) Municipal Limits of C.O. Unit Kamar Mushani.
- d) Municipal Limits of C.O. Unit Kalabagh.

Northern belt of River Indus up to Paka Road reason being cause of water pollution.

- a) Kot Chandna
- b) Jalal Pur.
- c) Manda Khel.
- d) China Pora.
- e) Katcha Kas Umar Khan.
- f) Kalu Khel.
- g) Bank Area of River Krum to avoid water pollution.
- h) Kundal.
- i) Attack PAnyala.

- j) Khaglanwala.
- k) Sharifwala.
- l) Kirundi.

### **Roads**

Within 220 Feet from Central along either side of the major road / Highways.

## **4.12 DECLARATION OF SPECIFIED POSITIVE AREAS**

Vide the Finance Act, 2008, the Government of Pakistan has enacted a new section “23A” in the Income Tax Ordinance 2001. The Section “23A” is reproduced below:-

“First year allowance.- (1) Plant, Machinery and equipment installed by any industrial undertaking setup in specified rural and under developed areas, and owned and managed by a company shall be allowed first year allowance in lieu of initial allowance under Section 23 at the rate specified in Part II of the third schedule against the cost of the “eligible depreciable assets” put to use after July 1<sup>st</sup>,2008.

(2) The provision of Section 23 except sub-sections (1) and (2), thereof, shall mutatis mutandis apply.

The Federal Government may notify “Specified areas” for the purpose of sub-section(1)”

In pursuance of the above mentioned notification District Government Mianwali has identified and approved the following specified positive areas for setting up industrial undertakings:-

Name of Tehsil/ Mouza	Location	Area Specified (Acres)
Tehsil Mianwali/ Borikhel	Musa Khel to Borikhel Link road both sides from 2 km to 6 km.	2000
Tehsil Mianwali/ Muzzafarpur Janubi & 22/DB	Wanbachran to Hernoli link road both sides from 2 km to 8 Km.	3000

#### 4.13 INCENTIVES FOR INVESTORS TO SETUP A UNIT IN EPZs

a) According to EPZs Authorities, following incentives are available in the Export Processing Zones

1. 100% ownership rights.
2. 100% repatriation of capital & profits.
3. No minimum or maximum limit for investment.
4. Duty free imports of machinery, equipment & material.

5. No sales tax on input goods including electricity & gas bills.
6. Obsolete/old machinery can be sold in domestic market of Pakistan after payment of applicable duties & taxes.
7. Freedom from National import restrictions.
8. Foreign exchange control regulation of Pakistan not applicable.
9. Defective goods/waste can be sold in domestic market after payment of applicable duties, maximum upto 3% of total value of export.
10. Duty free vehicle allowed under certain conditions. After 5 years of use, vehicles can be disposed off in domestic market on payment of duty on depreciated value.
11. Domestic market of Pakistan available on same conditions as for imports from other countries.
12. Units operating in EPZs can undertake sub-contracting for units of tariff area subject to payment of duty and taxes on value addition only.
13. Only EPZA is authorized to collect Presumptive tax at the time of export of goods which would be final tax liability.
14. EPZ units allowed to supply goods to Custom manufacturing bonds.
15. Production oriented labour laws to be solely regulated by the Authority.

16. EPZ manufacturer will be treated at par with bonded manufacturers in tariff area for any future incentives to be announced for exporters.
  17. Relief from double taxation subject to bilateral agreement.
- b) Facilities to Investors for setting up a unit in EPZs of Pakistan.
1. One window service and simplified procedure.
  2. All infrastructural facilities like water, electricity, gas, telex, fax and telecommunication system are made available by EPZA.
  3. Skilled & un-skilled labour available in abundance.
  4. Sub-contracting without limit on variety and quantity is allowed outside the zone as well as within the zone.
  5. The garment manufacturing units located in Export Processing Zones are eligible to participate in auction of quotas.
  6. GSP concessions given by various countries to imports from Pakistan are available to the manufacturers in the zone.
  7. Peaceful, secure and environmentally protected / pollution free work area.
  8. Inter-unit transfer of finished goods among exporting units allowed.

#### 4.14 PAKISTAN'S INVESTMENT POLICY - KEY FEATURES

##### *General*

- The investment policy is liberal and business friendly as it has been designed in consultation with businessmen, investors and representative forums as well as the Multinational Companies (MNCs).
- It provides equal investment opportunities for both domestic and foreign investors.
- All economic sectors open for FDI (Foreign Direct Investment).
- 100% foreign equity allowed.
- No government sanction required.
- Foreign investment on repatriable basis is allowed in all economic sector including manufacturing, agriculture, services, infrastructure and social sectors.
- Foreign investment in Agriculture projects allowed on joint-venture basis by associating minimum local equity of 40%.
- Remittance of Royalty, Technical & Franchise Fee, Capital, Profits, Dividends allowed.
- Minimum foreign equity for non-manufacturing including services sector has been reduced from \$ 0.3 to \$ 0.15 million. In Agriculture, infrastructure and social sectors, it is \$ 0.3 million.

### ***Tariff and Tax Incentives***

- To keep Pakistan competitive in international tariff 5% customs duty has been allowed on import of plant and machinery which is not manufactured locally.
- Sales tax 0% across the board.
- 0% duty on import of raw material for export industry.
- 0% duty on import of agriculture machinery.
- Tax relief in shape of Initial Depreciation Allowance (IDA) has been provided as 50% of machinery cost across the board.
- Tax relief has also been provided for expansion and Balancing, Modernization & Replacement (BMR) in existing industries.

### ***Policy Package of Pakistan***

Policy Parameters	Mfg. Sector	Non-Manufacturing Sectors		
		Agriculture	Infrastructure & Social	Services including IT & Telecom Services
Govt. Permission	Not required except for specified industries*	Not required except specific licences from concerned agencies.		
Remittance of capital, profits, dividends, etc.	Allowed	Allowed		
Upper Limit of foreign equity allowed	100%	100%	100%	100%

Minimum Investment Amount (M \$)	No	0.3	0.3	0.15
Customs duty on import of PME**	5%	0%	5%	0-5%
Tax relief (IDA***, % of PME cost)	50%	50%		
Royalty & Technical Fee	No restriction for payment of royalty & technical fee.	Initial lump-sum up to \$100,000 Max Rate 5% of net sales - Initial period 5 years		

\* Specified Industries:

- i) Arms and ammunitions
- ii) High Explosives
- iii) Radioactive substances
- iv) Security Printing
- v) Currency and mint

\*\* PME = Plant, Machinery and Equipment

\*\*\* IDA = Initial Depreciation Allowance

#### 4.15 INDUSTRIAL FINANCING FACILITIES

Following Financial Institutions in the country are providing various types of fixed investment industrial financing in the foreign and local currency to the industrial sector for establishment of new industrial units as well as for Expansion, Balancing, Modernization and Replacement (BMR)

of existing industrial units within the frame-work of industrial/financial policies of the Government of Pakistan.

- 1 AlBaraka Bank (Pakistan) Limited.
- 2 Allied Bank Limited.
- 3 Askari Bank Limited.
- 4 Bank Alfalah Limited.
- 5 Bank Al-Habib Limited.
- 6 Bank Islami Pakistan Limited.
- 7 Barclays Bank PLC.
- 8 Burj Bank Limited.
- 9 Citi Bank N.A.
- 10 Deutsche Bank A.G.
- 11 Dubai Islamic Bank Pakistan Limited.
- 12 Faysal Bank Limited.
- 13 First Women Bank Limited.
- 14 Habib Bank Limited.
- 15 Habib Metropolitan Bank Limited.
- 16 HSBC Bank Middle East Limited.
- 17 Industrial and Commercial Bank of China
- 18 Industrial Development Bank of Pakistan.
- 19 JS Bank Limited.
- 20 KASB Bank Limited.
- 21 MCB Bank Limited.
- 22 Meezan Bank Limited.

- 23 National Bank of Pakistan.
- 24 NIB Bank Limited.
- 25 Oman International Bank S.A.O.G.
- 26 S.M.E. Bank Limited.
- 27 Samba Bank Limited
- 28 Silk Bank Limited.
- 29 Sindh Bank Limited.
- 30 Soneri Bank Limited.
- 31 Standard Chartered Bank (Pakistan) Limited.
- 32 Summit Bank Limited
- 33 The Bank of Khyber
- 34 The Bank of Punjab
- 35 The Bank of Tokyo-Mitsubishi Limited.
- 36 The Punjab Provincial Cooperative Bank Limited.
- 37 United Bank Limited.
- 38 Zarai Taraqiati Bank Limited.

---

Source: State Bank of Pakistan

***List of Development Financial Institutions (DFIs)***

- 1 Bankers Equity Limited.
- 2 House Building Finance Company Limited.
- 3 Pak Brunei Investment Company Limited
- 4 Pak-China Investment Company Limited.
- 5 Pak Oman Investment Company Limited.

- 6 PAIR Investment Company Limited.
- 7 Pakistan Kuwait Investment Company Limited.
- 8 Pak-Libya Holding Company Limited.
- 9 Saudi Pak Industrial & Agricultural Investment Company Limited.

---

Source: State Bank of Pakistan

Besides the financial institutions mentioned above a number of Leasing Companies, Modaraba Companies, Investment Banks are also providing financing facilities to the industrial sector. Punjab Small Industries Corporation also extends financial assistance to the small/cottage industrial units.

#### **4.16 SALIENT FEATURES OF LOANING SCHEME OF PSIC**

Punjab Small Industries Corporation (PSIC) is a body corporate enacted in 1973. One of core functions of PSIC is financial assistance programme for prospective entrepreneurs, skilled youth, artisans and craftsmen all over the Punjab. The priority sectors are as under:

- Service Industries.
- Agro / Agro Support Industries.
- Food Processing Industries.
- Export Oriented Industries.
- Import Substitution Industries.
- Information Technology (IT) Project.

- Handicraft Industry.
- Women Enterprises.

PSIC started credit assistance programme during 1984 and completed 13 schemes up till now. An amount of Rs. 4079 Million has been disbursed to 19,580 entrepreneurs in 36 Districts of Punjab with the recovery rate of 88% that indicates proper utilization of loans.

The maximum loan limit is Rs.3 Million with debit equity ratio of 60:40. The credit assistance facility available for new projects, BMR and Working Capital. The markup rate varies from 0% to 12%. The repayment period of loan is from 3 years to 6 years with grace period of 3 months to 6 months.

Recently, Government of Punjab has provided an amount of Rs. 2000 Million for disbursement through Service Provider Organization i.e. M/s Akhuwat to un-employed and skilled persons of PVTCL, TEVTA, SANATZAR's of Social Welfare Department or other unemployed youth having good business plan.

Up till now, M/s Akhuwat has disbursed an amount of Rs. 1650.00 Million to 94,960 poor household in 33 vocations with average loan size of Rs. 17,382 in Punjab through its 142 offices in 30 districts of the Punjab.

To promote the traditional handicrafts in Punjab, PSIC has also launched dedicated credit assistance schemes for the craftsmen at subsidized markup rates. These craftsmen have also been provided marketing facilities through Pakistan Handicrafts Shops.

#### **4.17 SALIENT FEATURES OF THE SEZ BILL 2012**

The Law of SEZ has been made to meet the global challenges of competitiveness to attract FDI. The Law/bill will allow to create industrial clusters with liberal incentives, infrastructure, investor facilitation services to enhance productivity and reduce cost of doing business for economic development and poverty reduction. The Law further envisages to reduce processes through SEZ in Pakistan. The establishment of SEZs will attract both domestic as well as international investors. The SEZ would play a pivotal role in the economic development of Pakistan as has been witnessed in case of China, Malaysia, Thailand and other states.

It extends to the whole of Pakistan and overrides other laws (anything contrary);

- All SEZ whether Public, Public-Private or Private-Private to be governed under this Act;
- The Board of Approval (BOA) headed by the Prime Minister of Pakistan with the Minister for Finance as the Vice Chairman shall meet as

frequently as required but not less than twice a year and decisions shall be taken by a majority of the total membership present and voting;

- SEZs will have exemption from customs duties & taxes for all Capital Goods imported into Pakistan for the development , operations and maintenance of a SEZ;
- Exemption from all taxes on income accruable in relation to the development and operations of the SEZ for a period of ten years, starting from the date of signing of the Development Agreement.
- Zone Enterprises have exemption from custom duties etc. on imports of Capital Goods;
- Exemption from taxes on income for a period of 10 years starting from the date the Development certifies that the Zone Enterprise has commenced commercial operations in the relevant SEZ;

There is no limit to the economic potential of Pakistan. The challenge is to create the enabling environment in which this can be realized. Special Economic zones bill is a step towards the economic stability in the country.

#### **4.18 STRATEGIC TRADE POLICY FRAME WORK (2012-2015)**

The government unveiled on 29 January, 2013 a medium term (2012-2015) Strategic Trade Policy

Framework, setting a cumulative export target of \$95 billion for three years. The framework, the second announced by the federal government will be implemented with a funding of Rs. 26.14 billion. In the first year, Rs.5 billion will be spent on providing subsidies and support to identified sectors.

The focus of the policy is on promoting regional trade and regulatory efficiency, promoting agro-processed exports, increasing exports from less developed regions, revamping export promotion agencies, increasing green exports, enhancing role of women in exports and pursuing product and market development and diversification.

The salient features of the policy include institutional interventions, export development initiatives and regulatory amendments. The policy, offers cash assistance to 14 sectors along with 19 regulatory frameworks, including ban on products as a protective measure against environmental and health hazards. The new framework is designed to provide assistance only to the non-textile sectors.

***Institutional Measures:*** The government will setup institutions like an Export-Import (Exim) Bank, Pakistan Land Port Authority; Leather Export Promotion Council and a Services Trade Development Council.

**Export Development:** Major initiatives in the Policy included allowing mark-up rate support of two per cent on prevailing LTFF for future import and purchase of machinery. An allocation of Rs.500 million has been proposed for schemes to be implemented this year. The total amount to be spent in three years is projected at Rs.3 billion. A mark-up support of 1.5% will be provided on export finance scheme (EFS) to selected sectors at a cost of Rs. 1.25 billion, including Rs. 200 million in 2012-2013.

The sectors for EFS support are fish and fish preparations, fruit and vegetables, spices, meat and meat preparations, carpets and rugs, sports goods, footwear, leather products, surgical goods, cutlery, onyx products, pharmaceuticals, electric fans, transport equipment, electrical machinery, specialized machinery, furniture, handicrafts and computer-related services.

An amount of Rs.14 billion will be given as adhoc relief at three per cent of FoB to offset the impact of higher cost of utilities for exporters in selected sectors. The measure will cost Rs.3bn this year. An amount of Rs.2 billion-Rs125 million will be allocated for marketing development assistance for regional countries.

A Rs. 25 million allocation has been proposed for export promotion campaigns for agro-processed products; Rs. 400 million for encouraging opening

of retail outlets; and Rs.400m for subsidizing 50% cost of plant and machinery for establishing processing plants for meat, fruits, vegetables, dates and olives in Azad Jammu and Kashmir, Baluchistan, Gilgit - Baltistan and Khyber Pakhtunkhwa.

An amount of Rs.30 million will be allocated for upgrading rice inspection laboratories, Rs. 20 million for subsidy at 100% of the prevailing mark-up rate for establishing mining and processing units in Khyber Pakhtunkhwa and Baluchistan.

Another Rs.20 million has been allocated for strengthening women's chamber of commerce and industry, Rs.32 million for setting up a resource management cell at the ministry of commerce, Rs.28 million for establishing leather export promotion council and Rs.70 million for services export development council.

### ***Regulatory Measures***

Unrestricted import of used motorized wheelchairs and five-year-old used or second-hand ambulances has been allowed. Two per cent of export proceeds will be allowed to manufacturers-cum-exporters for duty-free import of accessories for value-addition for leather garments and made-ups. Import of non-hazardous plastic scrap has been allowed for industrial consumers for use as raw material. A ban has been imposed on import of

plastic waste, hospital waste, used sewerage pipes and chemical containers.

Import of non-sterilized surgical needles and syringes will be restricted to industrial units, condition of Euro-II may be made applicable on import of all types of specialized vehicles, such as crane-mounted lorries, dump trucks and mixtures lorries. The import of used sprinkle lorries will be restricted to a maximum of five year old. All goods from banned list imported in commercial quality shall be allowed to re-export at importer/shipping lines cost. The imported substandard goods from the restricted list should be destroyed within a period of six months without offering any release.

Import of waste and scrape of tyres in completely shredded/ cut form will only be allowed to industrial consumers; domestic standards will equally apply to imported goods as well.

Construction engineering and electrical companies will be allowed to retain abroad the exported machinery to carry out work on export-cum-import basis with the condition that they will import the same on the conclusion of the contract against indemnity bond.

All exporters of edible products are to be registered and export of vegetable ghee and cooking oil will be allowed in packaging of up to 25kg to encourage value-addition.

### ***Steps to contain Environmental & Health Hazards***

- Ban on import of plastic waste/scrap-hospital waste, used sewerage pipes and chemical containers.
- Restricting import of non-sterilized surgical needles and syringes to industrial units.
- Only the more fuel efficient Euro-II category crane-mounted lorries, dump trucks, mixture lorries, etc, will be imported.
- Imported used tyres will only be allowed for industrial use.

### ***Institutions to be Setup***

- Export-Import Bank.
- Pakistan Land Port Authority.
- Leather Export Promotion Council.
- Service Trade Development Council.



## CHAPTER - V

### EXISTING PATTERN OF INDUSTRIAL DEVELOPMENT

#### 5.1 DESCRIPTION OF EXISTING INDUSTRIES

There are about 35 large, medium and some small industrial units in the district. Industry-wise installed capacity of major industrial units is given in Table-10.

**TABLE-10**

#### Industry-wise Installed Capacity

Sr. #	Industry	No. of units	Annual Installed Capacity
1	Cement	1	3690000 TPA / Year Clinker
2	Cotton Ginning & Pressing	11	44 Sawgins, 11 Press
3	Fertilizer	1	346500 M.Tons
4	Flour Mills	8	1180 M.Tons /Day
5	Iron & Steel Re-Rolling Mills	1	8400 M.Tons
6	Power Generation	3	183.84 MW
7	Soap & Detergents	9	335 Lac Rs.
8	Unani Medicines	1	Nil

Source: District Officer (E&IP), Mianwali.

**Note:** For further details visit: [www.doi.pitb.gov.pk](http://www.doi.pitb.gov.pk)



## CHAPTER - VI

### FUTURE INDUSTRIAL POTENTIAL

Keeping in view the availability of raw material, skilled labour, linkage between the industrial units, local/national/international demand, future industrial potential of district Mianwali is discussed hereunder:

It would, however, be kept in mind that though the above mentioned factors facilitate the success of any industrial unit, yet the entire success depends upon the investors/entrepreneurs and the capabilities of the personnel having the managerial control because any of these factors, if lacking is manageable. Therefore, it is advisable that detailed feasibility of industrial projects must be carried out before making final decision for investment.

#### 6.1 AGRICULTURE

Main crops are wheat, sugarcane, Bajra and Cotton. Their annual average production over the period 2008-09 to 2010-11 was 375.66, 156.87, 10.97 and 58.97 thousand M.Tons respectively. (Chapter-3, Section 3.1).

In district Mianwali, there are eight flour mills. The production of wheat does not reflect potential for additional flour mills. However, the overall

production of sugarcane is not sufficient to support a sugar mill.

## **6.2 LIVESTOCK**

As per Punjab Development Statistics 2011, the population of cattle, buffaloes, sheep and goats was 553, 254, 686 and 986 thousand heads respectively. The annual availability of hides and skins is estimated at 152400 pieces.

In view of the Kalabagh Livestock and Meat Processing unit, which is exporting its entire processed meat, there exists very good potential for cattle/sheep/goats fattening farms.

As allied exportable products, poultry processing unit and dairy products manufacturing units may also be established which will help to develop integrated complex including poultry farms, dairy farms, poultry/animal feeds. With further exploration of export market of fruit juice, preserved fruit and frozen dehydrated vegetable units may also turn out to be good investment projects. Other allied projects are tannery, leather garments/products.

## **6.3 FOREST**

District Mianwali is quite rich in forest resources. The annual average production of Timber and Firewood from 2008-11 was 6.13 and 0.983 cubic

meters respectively which reflect very good prospects for wood seasoning / processing, furniture / flush doors / windows, particle / venner board (Chapter 3, Section 3.2)

#### **6.4 MINERAL**

District Mianwali is quite rich in minerals. Argillaceous Clay, Coal, Dolomite, Fire Clay, Gypsum, Limestone, Silica Sand, Rock Salt, Iron Ore, Ochers, Latrite, China Clay, Calcite, Bauxite, Celestite, Marble, Gypsum LS and Lime Stone LS are excavated in commercial qualities.

There is one cement factory operating in the district. However, there exists good scope for Dolomite Processing, Fire Bricks/Refractories, Hollow Glass-ware, Insulators/Capacitors and Ceramics Sanitary-ware. A careful study may also reflect a potential for a Coal based power generation unit, a Soda Ash unit based on Rock Salt and a steel mill based on iron-ore.

#### **6.5 INDUSTRY**

Besides cement factories, other important industrial units operating in the district are pharmaceutical (Antibiotics), fertilizer and dyes/chemical manufacturing units. Developing business relation with these units; paper sacks (for cement), polypropylene woven bags (for

fertilizer), glass ampoules (for injection filling) manufacturing units possess very good prospects.

Concrete Railway Sleepers/Electric Poles manufacturing units also have very good prospects provided business arrangements are made with WAPDA and Railway Department.

## **6.6 DEMAND BASED INDUSTRIES**

Though some important industrial units are operating in district Mianwali, but it is among the less developed districts of Punjab. In view of its general requirements, there seems relatively better prospects for Laundry Soap, PVC Footwear, Brush manufacturing, Stone Crushing, Cold Storage, Light Steel Fabrication, Agricultural Implements, etc.

## **6.7 LIST OF IDENTIFIED PROJECTS**

In view of discussion given in Section 6.1 to 6.6, the following projects are identified for investment in district Mianwali:

- Agriculture Waste / by products raw material based industries for maximization of value addition chain.
- Agricultural Implements
- Bone Crushing
- Brush Manufacturing
- Cold Storage
- Ceramic Sanitary-ware/Table-ware

- Cattle/Sheep/Goats Fattening Farm
- Chemical Industry
- Coal Based Power Generation Unit
- Dairy Farms
- Dairy Products
- Dolomite Processing
- Energy conservation / efficiency
- Fruit Juices
- Fruit Preservation
- Fire Bricks/Refractories
- Glass Ampoules for Injection Filling
- Hollow Glass-ware
- Insulators/Capacitors
- Laundry Soap
- Leather Products/Garments
- Light Steel Fabrication
- PVC Footwear
- Poultry Farm (Broiler)
- Poultry Processing Unit
- Poultry/Animal Feed
- Paper Sacks for Cement Packing
- Polypropylene Woven Bags for Fertilizer Packing
- Power generation through coal and other alternate fuels
- Power generation through bagasse
- RCC Railway Sleepers/Electric Poles
- Steel Mill Based on Iron-Ore
- Soda Ash
- Stone Crushing
- Tannery
- Vegetable Dehydration/Freezing
- Waste heat recovery systems



**Directory of Industrial Establishments, Mianwali**

Sr. No.	Name / Address of unit	Phone No. / Website	Industry	Estb. Year	Investment (Th.Rs.)	Emp	Product	Annual Installed Capacity
1	Maple Leaf Cement Factory Limited Iskanderabad	459392237	Cement	1956	26000000	982	Opc Cement Low Alkali Cement Oil Well Cement	3,690,000 TPA / Year Clinker
2	Ahmad Cotton Factory Piplan Raod Hafiz Wala	0300-6059874	Cotton Ginning/Pressing	2008	10000	35	Cotton Lint	5 Sawgins / 1 Press
3	Arif Cotton Factory Kabari	0345-7843921	Cotton Ginning/Pressing	2010	8000	28	Cotton Lint	3 Sawgins / 1 Press
4	Awais Cotton Industry Sargodha Road	0306-6589471	Cotton Ginning/Pressing	2005	9000	20	Cotton Lint	4 Sawgins / 1 Press
5	Bahoo Cotton Factory	0344-5698247	Cotton Ginning/Pressing	2006	8000	15	Cotton Lint	3 Sawgins / 1 Press
6	Bismillah Cotton Factory 5/6 MI Piplan	0302-6589471	Cotton Ginning/Pressing	2010	10000	30	Cotton Lint	5 Sawgins / 1 Press
7	Dabara Jameel Cotton Factory Musa Khel Road	0300-6025894	Cotton Ginning/Pressing	2010	8000	26	Cotton Lint	3 Sawgins / 1 Press
8	Fateh Cotton Factory Sargodha Road	0300-6090250	Cotton Ginning/Pressing	2010	8000	18	Cotton Lint	3 Sawgins / 1 Press
9	Hafiz Cotton Factory Fafiz Wala	0334-6985423	Cotton Ginning/Pressing	2010	10000	29	Cotton Lint	5 Sawgins / 1 Press
10	Haris Cotton Factory Musa Khel Road	0321-5698231	Cotton Ginning/Pressing	2010	10000	27	Cotton Lint	5 Sawgins / 1 Press
11	Mianwali Coton Factory Wanbachran Kabari	0345-6985321	Cotton Ginning/Pressing	2010	10000	27	Cotton Lint	5 Sawgins / 1 Press
12	Murad Cotton Factory Multan Road	0315-5698471	Cotton Ginning/Pressing	2010	8000	28	Cotton Lint	3 Sawgins / 1 Press

Sr. No.	Name / Address of unit	Phone No. / Website	Industry	Estb. Year	Investment (Th.Rs.)	Emp	Product	Annual Installed Capacity
13	Agri Limited (Formerly Pak American Fertilizer Ltd, Iskanderabad)	0459-392346-50	Fertilizer	1998	40930352	875	Urea Fertilizer	346500 M.Tons
14	Azeem Flour Mill Vitha Khel Mohellah	0300-9471247	Flour Mills	1996	8000	6	Flour	120 M. Tons / Day
15	Azeem New Flour Mills Wahan Bhuchran	231927	Flour Mills	1990	5000	20	Flour	160 M. Tons / Day
16	Bachar Flour Mill Wan Bhachran	396422	Flour Mills	2007	4500	12	Flour	120 M. Tons / Day
17	Fine Flour Mills Isakhel	285245	Flour Mills	1990	4500	10	Flour	120 M. Tons / Day
18	Hamza Flour Mills G.T. Road Wahan Bhuchran	300-6090250	Flour Mills	1999	12000	6	Flour	200 M. Tons / Day
19	Mianwali Flour Mills Banno Road	0459-2325165	Flour Mills	1977	6000	18	Flour	160 M. Tons / Day
20	Mustafa Flour Mills Mianwali Kalabagah Roa Dbannu Road	0300-6004699	Flour Mills	1996	11500	12	Flour	160 M. Tons / Day
21	Pai Khel Flour Mills Esa Khel Road	0300-6004699	Flour Mills	1999	10000	8	Flour	140 M. Tons / Day
22	Al Mezaan Steel Mills	233599	Iron & Steel Re-Rolling Mills	2007	10000	C	Gader Tr	8400 M.Tons
23	Chashma Power Plant	920000	Power Generation	2006	5500	250	Electricity	80 Mw
24	Jinah Hydro Power Plant	399303	Power Generation	2009	5500	150	Electricity	80 Mw
25	Maple Leaf Electric Co. Ltd. Iskanderabad	0459-392237-8	Power Generation	1999	2000000	54	Electricity	23.84 Mw

Sr. No.	Name / Address of unit	Phone No. / Website	Industry	Estb. Year	Investment (Th.Rs.)	Emp	Product	Annual Installed Capacity
26	Javaid Unani Laboratories (Regd)	0459-2789-30652	Soap & Detergent	1982	1100	23	Unani Medicines	30 Lac.Rs.
27	Rehmania Dawa Khana Miana Mohallah		Soap & Detergent	1984	1200	7	Unani Medicines	30 Lac Rs.
28	Akram Soap Factory Near Liaquatabad	21292-21192	Soap & Detergent	1991	1500	7	Washing Soap	80 M.Tons
29	Kamran Dawa Khana Miana Mohallah		Soap & Detergent	1993	1000	6	Unani Medicines	25 Lac Rs.
30	Mumtaz Dawa Khana (Regd)Mianwali		Soap & Detergent	1985	1200	7	Unani Medicines	35 Lac Rs.
31	New Pak Herbal Dawa Khana Miana Mohallah		Soap & Detergent	1974	1200	11	Unani Medicines	45 Lac Rs.
32	New Standard Unani Laboratories		Soap & Detergent	1998	900	6	Unani Medicines	25 Lac Rs.
33	Sawan Dawa Khana Miana Mohallah		Soap & Detergent	1994	1000	7	Unani Medicines	25 Lac Rs.
34	Unani Medicnes Miana Mohallah		Soap & Detergent	1988	1300	8	Unani Medicines	40 Lac Rs.
35	Javaid Unani Medicines, Miana		Unani Medicines	1978	2000	17		

Source: Directorate of Industries, Punjab



## LIST OF CONTACT NUMBERS

### *Directorate of Industries Punjab*

<b>Designation</b>	<b>Contact</b>
Director Industries, Punjab	Tel: +92 (42)-99211520-1 Fax: +92 (42)-99211522 dipunjab@gmail.com
Additional Director Industries	Tel: +92 (42)-99211531 +92 (42)-99212752 Fax: +92 (42)-99212753
Joint Director (Development)	Tel: +92 (42)-99211526
Senior Economist	Tel: +92 (42)-99211533
Staff Economist	Tel: +92 (42)-99211534
Deputy Director (Admin)	Tel: +92 (42)-99211528
Deputy Director (Development)	Tel: +92 (42)-99211528
Deputy Director (Planning)	Tel: +92 (42)-99211530
Assistant Director (Admin)	Tel: +92 (42)-99211529
Assistant Director (Planning)	Tel: +92 (42)-99211530
Assistant Director (Statistics)	Tel: +92 (42)-99211524
Assistant Registrar	Tel: +92 (42)-99211523
Librarian	Tel: +92 (42)-99213010
District Officer (E&IP), Mianwali	Tel: +92 (459)-920082

### *Other Relevant Departments*

<b>Department</b>	<b>Contact</b>
Secretary, Industries, Commerce & Investment Department, Govt. of the Punjab	Tel: +92 (42) 99210534-5 Fax: +92 (42) 99210536
Punjab Board of Investment & Trade (PBIT)	Tel: +92 (42) 99205201 info@pbit.gop.pk
Small & Medium Enterprises Development Authority (SMEDA)	Tel: +92(42)-111-111-456 Fax: +92 (42) 36304926-7 info@smeda.org.pk
Punjab Industrial Estates Development and Management Company (PIEDMC)	Tel: +92 (42) 35297203-6 Fax: +92 (42) 35297207 info@pie.com.pk
Punjab Small Industries Corporation (PSIC)	Tel: +92 (42) 99200453



## BIBLIOGRAPHY

- Punjab Development Statistics 2011, Bureau of Statistics, Government of the Punjab
- The Urban Unit, Planning & Development Department, Government of the Punjab.
- Technical Education and Vocational Training Authority
- Chief Inspector of Boilers, Directorate of Industries, Punjab
- Directorate of Agriculture, Crop Reporting Service, Punjab
- Chief Conservator of Forest Planning, Monitoring and Evaluation, Punjab
- Directorate General (Ext), Livestock & Dairy Development Punjab
- Directorate General Mines & Minerals, Punjab
- Punjab Small Industries Corporation
- Punjab Industrial Estates Development and Management Company
- Faisalabad Industrial Estates Development and Management Company
- Industries, Commerce & Investment Department, Government of the Punjab
- District Officers (Enterprise & Investment Promotion) as well as District Administration
- Export Processing Zones Authority
- Board of Investment, Government of Pakistan
- Website of Stat Bank of Pakistan
- Ministry of Commerce, Govt. of Pakistan
- Directory of Industrial Establishments Punjab, Directorate of Industries, Punjab

