

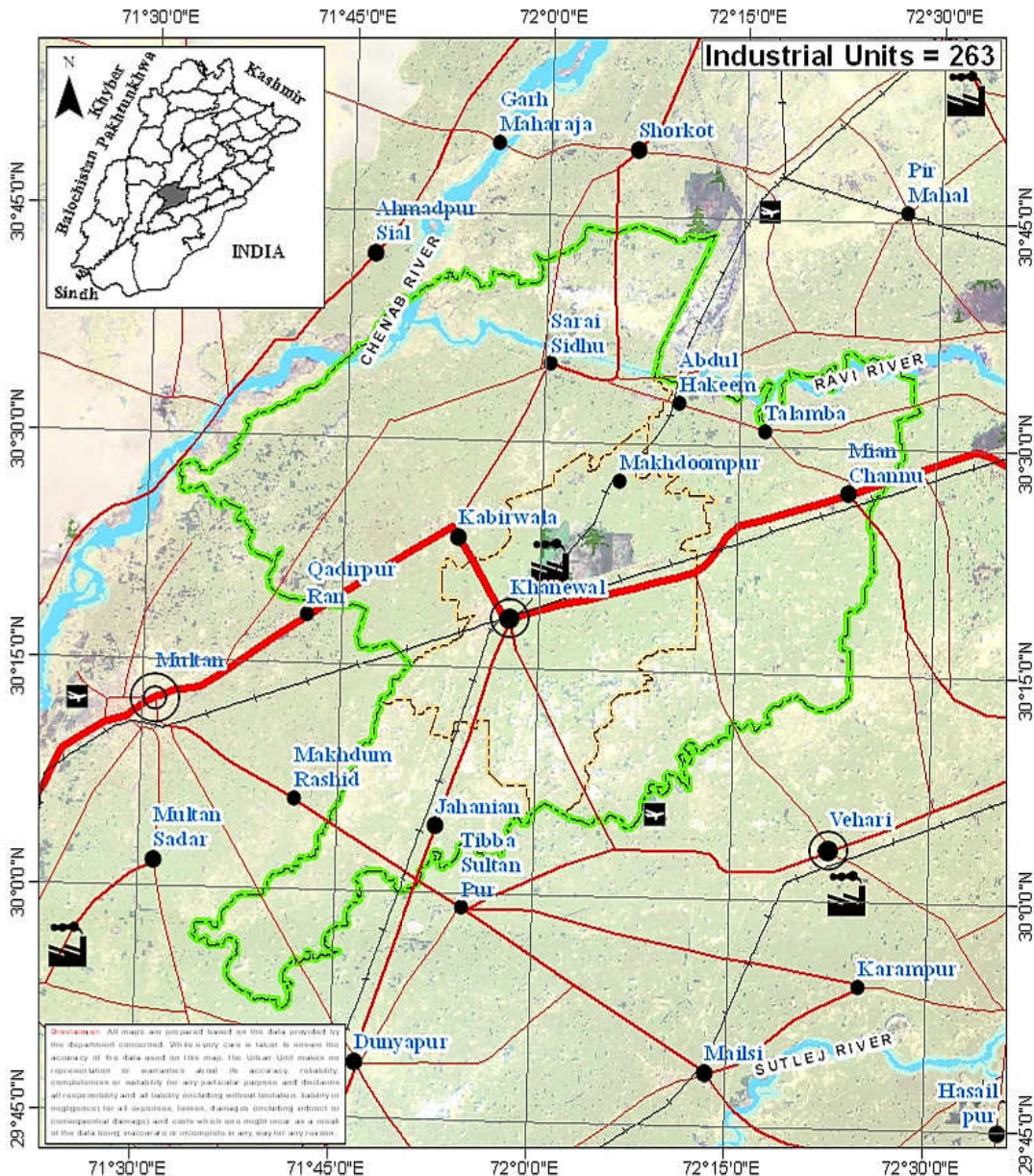
District Pre-Investment Study - 2012

Khanewal

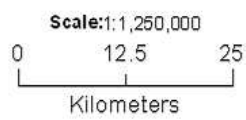


Directorate of Industries, Punjab
Poonch House, Multan Road, Lahore.

District Khanewal



Map No.: KNW-01 | Date: 21-01-2013



Legend		Transportation:	Landuse:
	Provincial Boundary		
	District Boundary		
	Tehsil Boundary		
	Divisional Headquarter		
	District Headquarter		
	Tehsil Headquarter		

Director's Message

After spending past two years in Directorate of Industries, Punjab, I feel very privileged to be writing this message as Director Industries, Punjab.



This is the time we publish the 7th edition of the District Pre-Investment Studies of 36 Districts of Punjab, which has now become synonymous with our commitment to helping Industrialists, new entrepreneurs as well as Researchers. As Director Industries Punjab, I have seen much change, like:

- Relocation plan for the industrial units located within residential areas to industrial estates / positive areas declared by the District Governments.
- Adaptation of Boilers & Pressure Vessels Ordinance 2002.
- Conduct of Census of Manufacturing Industries.
- A scheme "Improvement and Up-gradation of Boilers Inspection Wing" has been approved by the Planning & Development Department, Government of the Punjab with the cost of Rs.10 Million.
- A Scheme "Sports Goods and Material Testing Laboratory" is under process in Planning & Development Department, Government of the Punjab. The estimated cost of the scheme is Rs.450 Million.
- The proposal for Capacity Building of Directorate of Industries Punjab is under process in Industries, Commerce & Investment Department, Government of the Punjab with the estimated cost of Rs.109.75 Million.
- We launch our website www.doi.pitb.gov.pk.

Looking ahead, we are focused on accelerating the execution of growth and promote industrial investment in the province. I am incredibly excited about this and truly believe the best of time for industrial investment is yet to come, Insha Allah.

(Muhammad Siddique Sheikh)
Director Industries, Punjab

Preface

Pre-investment studies for the districts in the Punjab were first published by the Directorate of Industries and Mineral Development, Punjab in the year 1979, with the prime objective of providing data which might interest private entrepreneurs and the framers of the Provincial and National Strategies in the industrial sector.

The second, third, fourth, fifth and sixth series of Pre-investment Studies for all districts of Punjab were published in 1983, 1992, 2002, 2006 and 2009 respectively. The present edition is seventh in the series.

This study basically updates the information contained in sixth series of district pre-investment studies. Efforts have been made to provide latest information collected through published sources, offices of the respective Government Departments/Agencies and District Offices of Industries Department. Quality addition of Industrial Policy Framework, recently promulgated Special Economic Zone Act 2012, Strategic Trade Policy Framework (2012-15) and Digital Maps by Urban Unit has improved these studies significantly.

The information has been updated in respect of population, manpower, production of agriculture crops, fruits, vegetables, livestock, forest resources, ores/minerals, infrastructural facilities such as technical/vocational training facilities, communication net-work, sub-soil water quality/effluent disposal

facilities, power/gas supply, tele-communication facilities, industrial estates, dry ports, industrial financing facilities, loaning scheme of PSIC, industrial policy, investment policy, fiscal incentives, Special Economic Zone Act 2012 and Strategic Trade Policy Framework (2012-15) etc. New policy measures regarding declaration of negative and specified positive areas have also been incorporated.

The study also includes information regarding existing industrial pattern, industry wise installed capacities and details regarding existing major industrial units in each district.

Effort has been made to identify various industries considering the availability of raw materials, skilled labour, linkage between industrial units and local/national/international demand. The suggested industries are, however, merely of indicative nature and it is advisable that prospective investors should conduct detailed feasibility report before making final decision for investment.

It is worthwhile to mention that industrial sector in Punjab has grown gradually from 6,223 industrial units in 1975 to 17,857 industrial undertakings in 2010. Sectoral growth has also been registered, resulting in substantial value addition. Value addition chain can be maximized by processing the agricultural industrial waste like rice husk, cotton stock, maize and corn cob. Herbal products is another untapped area. Live Stock, Dairy Development and poultry are fast growing sectors. Processing of food products can fetch handsome dividends. Currently information technology sector is growing by 39% annually in Pakistan. Fashion

industry is also developing rapidly. Similarly, chemical sector has lot to offer by utilizing the available mineral resources as raw material.

Issue of energy shortage can be addressed by dealing with power generation as an industry. Local as well as foreign investors have golden opportunity to set up power generation stations based on coal and other alternate fuels, under the captive power plants policy allowed in the newly promulgated SEZ Act, 2012. Punjab offers very good opportunity to the local as well as foreign investors to set up small, medium and heavy industries in variety of sectors. It has a growing market of over 90 million consumers, abundant manpower / labour force and cheap raw material with reasonably controlled law & order.

The Industries, Commerce & Investment Department has sufficient institutional frame work of attached and autonomous bodies to look after the industrial issues. Directorate of Industries, Small Industries Corporation (PSIC), Board of Investment (PBIT), Punjab Industrial Estates Development and Management Company (PIEDMC), Faisalabad Industrial Estates Development and Management Company (FIEDMC) have blend of professionals from the public as well as private sector. These legal entities are working in close coordination with the Chambers of Commerce and Industries systematically to promote industrialization and trade.

Development schemes regarding establishment of Industrial Resource Centre at the Directorate of Industries, setting up Sports & Material Testing Lab at EPZ, Sambrial and Industrial Safety Institute are under consideration with the Planning and Development

Department. Completion of these schemes will definitely help in promotion of industrialization process with enhanced industrial safety.

I must record my appreciation to Mr. Muhammad Akram Awan, Senior Economist, who effectively planned, coordinated and provided the guidance to his team members for completion of this study. Credit also goes to Mr. Muhammad Jamil Chishty, Staff Economist for his dedicated support rendered in the completion process of this study and Mr. Waseem Haider, Stenographer, for his tireless typing and composition work on computer.

I am grateful to all the District Officers, Enterprise & Investment Promotion who provided the relevant information of their respective districts for incorporating in pre-investment studies. I am also thankful to various Provincial Departments for supplying the required data to the Directorate of Industries. My special thanks are due to Dr. Nasir Javed, Project Director, Urban Unit for the provision of digital maps and the Punjab Printing Press.

Any suggestion for the improvement of the study will be welcomed.

Dec. 31, 2012

(Muhammad Siddique Sheikh)
Director Industries, Punjab

Contents

Section	Page
District at a Glance	1
1. Geographical Conditions	3
1.1 Brief Description of the District	3
1.2 Climate and General Soil Conditions	3
2. Man-Power	5
2.1 Total Population of the District	5
2.2 Man-Power Availability	6
2.3 Traditional Crafts	9
2.4 Geographical Indications	9
3. Natural Resources	11
3.1 Agriculture	11
a) Main Crops	11
b) Main Fruits	12
c) Main Vegetables	12
3.2 Forests	13
a) Location of Forests and Area under Afforestation	13
b) Production of Timber and Fire-wood	14
3.3 Livestock Population	14
a) Animal Population	14
b) Poultry Population	15
c) Availability of Hides/Skins & Slaughter House Wastes	15
d) Production of Wool	15
3.4 Ores and Minerals	16

4. Infrastructural Facilities	17
4.1 Communication Network	17
a) Road Links	17
b) Rail Links	17
4.2 General Quality and Availability of Sub Soil Water	17
4.3 Effluent Disposal Facilities	18
4.4 Power Supply	18
4.5 Natural Gas Availability	18
4.6 Telecommunication Facilities	18
4.7 Social Infrastructural Facilities	19
4.8 Industrial Estates	19
4.9 Dry Port	20
4.10 Industrial Policy	20
4.11 Declaration of Negative Areas	25
4.12 Declaration of Positive Areas	27
4.13 Incentives for Investors to set a unit in EPZs	29
4.14 Pakistan's Investment Policy – Key Features	32
4.15 Industrial Financing Facilities	34
4.16 Salient Features of Loaning Scheme of PSIC	37
4.17 Salient Features of the SEZ Bill 2012	39
4.18 Strategic Trade Policy Frame Work (2012-2015)	40
5. Existing Pattern of Industrial Development	47
5.1 Description of Existing Industry	47
6. Future Industrial Potential	49
6.1 Agriculture	49
6.2 Livestock	50
6.3 Industry	51
6.4 Demand Based Industries	51
6.5 List of Identified Projects	52

Annex	Page
Directory of Industrial Establishments	55
List of Contact Nos.	85
Bibliography	87

DISTRICT AT A GLANCE

1	Population (000 Numbers)	:	2,623
2	Area (Square Kilometres)	:	4,349
3	Population Density (per sq. km.)	:	603
4	Tehsils / Towns	:	Khanewal, Jahanian, Kabirwala and Mian Channu.
5	Main Crops	:	Cotton, Wheat Sugarcane, Rice (cleaned) and Maize.
6	Main Fruits	:	Citrus, Mango and Guava.
7	Main Vegetables	:	Potato, Onion, Turnip, Cauliflower and Carrot.
8	Forest Resources (Area in Acres)	:	8417.21
9	Mineral Resources	:	Nil
10	Total Metalled Roads (KM)	:	2,203.03
11	No. of Grid Stations	:	07
12	No. of Telephone Exchanges	:	21
13	Number of Industrial Units (Large Medium and Some Small Selected Sectors)	:	263
14	Type of Industrial Units	:	Agricultural Implements, Beverage, Blending of Tea, Biscuit, Chip/ Straw Board, Cold Storage, Cotton Ginning

& Pressing, Cement Products, Dairy Products, Flour Mills, Fruit Juices, Hatchery, Industrial Machinery, Packages, Plastic Products, Poly Propylene Bags, Paper & Paper Board, Poultry Feed, Power Generation, PVC Yarn, Rice Mills, Seed Processing, Solvent Oil Extraction, Sugar, Sizing of Yarn, Textile Spinning, Textile Weaving, Textile Made-up, Vegetable Ghee / Cooking Oil, Wire & Cable and Woollen Textile Spinning /Weaving

CHAPTER - I

GEOGRAPHICAL CONDITIONS

1.1 BRIEF DESCRIPTION OF THE DISTRICT

District Khanewal was created in 1985 out of the two tehsils of Khanewal district namely Kabirwala and Mian Channu. Its boundaries meet districts of Jhang and Toba Tek Singh on the North, Sahiwal district on the East, Vehari on South and with district Multan on West.

District Khanewal is spread over an area of 4,349 square Kilometres and comprises the four tehsils of:

- i) Khanewal
- ii) Kabirwala
- iii) Mian channu
- iv) Jahanian

1.2 CLIMATE AND GENERAL SOIL CONDITIONS

District Khanewal has an extreme climate i.e. very hot in Summer to the extent of 48.4°C and cold in winter upto 1°C. The land of the district is very fertile and plain. However, some portions of Khanewal and Mianchannu tehsils consist of sand dunes. The river Chenab flows on its north and the river Ravi on its North East side. Small area of

tehsil Kabirwala is flooded during monsoon season.
The average rainfall in the district is 93 mm.

CHAPTER - II

MAN POWER

2.1 TOTAL POPULATION OF THE DISTRICT

According to Punjab Development Statistics 2011, total population of Khanewal district is 2,623 thousand persons out of which 1,364 thousand are males and 1,259 thousand are females. Density of population in the district is 603 persons per square Kilometre.

Tehsil wise distribution of Urban and Rural population is given in Table-1

TABLE-1

Town-Wise Distribution of Urban & Rural Population

Town	Population (Thousand Nos.)		
	Urban	Rural	Total
Khanewal	192	502	694
Kabirwala	125	694	819
Mian Channu	113	679	792
Jahanian	32	286	318
Total	462	2161	2623

Source: Punjab Development Statistics, 2011

2.2 MAN POWER AVAILABILITY

As regards availability of skilled labour, there are 12 technical / commercial / vocational institutions (7 for men and 5 for women) imparting training in various trades e.g. mechanical, electrical, auto-engineering, welding and commerce. Vocational institutions for women impart training in hand/machine embroidery, stitching, knitting, Dress Designing & Making, Beautician and carpentry, etc. In all about 2001 trained technicians/artisans/workers are turning out every year. The details are given in Table-2.

TABLE - 2

Commercial and Technical Institutions

Sr #	Name & Description of Commercial / Technical Training Institutions	Types of Training Courses Offered	Duration of Course	Average No of Students Enrolled / Session
For Men				
1	Govt. Institute of Commerce, Near New General Bus Stand, Jhang Road, Kabirwala	B. Com, D.Com.	24 Months	154
2	Govt. College of Commerce, Peoples Colony, Y-Block, Khanewal	M.Com, B.Com, DBA, D.Com	24 Months	826

3	Govt. College of Commerce, G.T.Road, Musa Virk, Mian Channu	D.Com	24 Months	105
4	Govt. Technical Training Institute, Near Eid Gah, Peoples Colony, Khanewal	Electrical, Draftsman (Civil, Mechanical), Machinist, Radio & TV, Welder, Plumber	12 to 24 Months	225
5	Govt. Technical Training Centre (DMTC), Adapul Stop, Talamba	Auto & Farm Machinery, Carpenter, Welder, Turner, Wiring	6 Months	37
6	Govt. Technical Training Centre, Jhang Road, Kabirwala.	Electrical, Tractor Mechanic, Certificate in Computer Application, Heating Ventilation and AC, Microsoft IT Academy.	3 to 6 Months	150
7	Govt. Technical Training Centre, 143-A Housing Scheme, Jahanian.	Heating Ventilation and AC, Electrician, Motor Cycle Mechanic.	6 Months	86

For Women				
8	Govt. Vocational Training Institute, Chak Shahana Road, Near Awan Chowk, Khanewal	Certificate in Computer Application, Beautician, Vocational Certificate, Vocational Diploma, Tailoring	6 to 24 Months	104
9	Govt. Vocational Training Institute, Jhang Road, Kabirwala	Vocational Certificate, Vocational Diploma, Tailoring	6 to 24 Months	57
10	Govt. Vocational Training Institute, Street No.4, Jinnah Town, Mian Channu.	Beautician, Vocational Certificate, Vocational Diploma, Tailoring	6 to 12 Months	93
11	Govt. Vocational Training Institute (RMGTC), G.T.Road, Near Tehsil Court, Mian Channu.	Dress Designing & Making, Domestic Tailoring, Beautician.	6 to 12 Months	59
12	Govt. Technical Training Centre, House No.90, Block No.A, Street No.20, Housing Scheme, Jahanian.	Certificate in Computer Application, Hand Embroidery, Domestic Tailoring.	3 to 6 Months	105

Source: TEVTA

2.3 TRADITIONAL CRAFTS

Khanewal is an agricultural district; no traditional craft of any significance is in existence.

2.4 GEOGRAPHICAL INDICATIONS

The Project Director (Geographical Indications), Industries, Commerce & Investment Department, Government of the Punjab has identified the following Important Geographical Indications in the district:

- Agricultural Implements
- Burfi (Sweets)

CHAPTER - III

NATURAL RESOURCES

3.1 AGRICULTURE

a) Main Crops

Cotton, Wheat Sugarcane, Rice (cleaned) and Maize are the main crops grown in the district. Production of these crops during the period 2008-09 to 2010-11 is given in Table - 3.

TABLE-3

**Production of Main Crops
(2008-09 to 2010-11)**

Crop	Production (Th. M.Tons)		
	2008-09	2009-10	2010-11
Cotton (000 Bales)	754.1	603.78	729.45
Wheat	714.32	728.64	627.46
Sugarcane	423.26	419.53	462.45
Rice (cleaned)	57.50	43.69	43.00
Maize	89.8	87.7	91.9

Source: Directorate of Agriculture, Crop Reporting Service, Punjab

Besides, Tobacco, Bajra, Jawar, Moong, Mash, Masoor, Oil Seed such as Rape / Mustard and Sunflower are also grown in minor quantities in the district.

b) Main Fruits

Citrus, Mango and Guava are main fruits grown in the district. Production of these fruits during the period 2008-09 to 2010-11 is given in Table - 4

TABLE-4

**Production of Main Fruits
(2008-09 to 2010-11)**

Fruit	Production (M.Tons)		
	2008-09	2009-10	2010-11
Citrus	132083	90053	90678
Mango	149813	152098	168889
Guava	19484	17029	21944

Source: Directorate of Agriculture, Crop Reporting Service, Punjab

Besides, Pomegranate, Jaman, Peaches, Dates, Phalsa and Banana are also grown in minor quantity in the district.

c) Main Vegetables

Potato, Onion, Turnip, Cauliflower and Carrot are main vegetables grown in the district. Production of these vegetables during the period 2008-09 to 2010-11 is given in Table - 5

TABLE-5

**Production of Main Vegetables
(2008-09 to 2010-11)**

Vegetable	Production (M.Tons)		
	2008-09	2009-10	2010-11
Potato	74039	8380	121990
Onion	12266	14877	24367
Turnip	7054	7269	7009
Cauliflower	5748	6063	5852
Carrot	10526	9033	8174

Source: Directorate of Agriculture, Crop Reporting Service, Punjab

Besides, Ladyfinger, Garlic, Chillies, Tomato and Peas are also grown in the district in minor quantities.

3.2 FORESTS

a) Location of Forests and Area under Afforestation

An area of 8,417.21 Acres is under forests, which is about 0.78% of the total area of the district. There is also linear plantation of 1,412.12 Km alongside the roads/rails/canals in the district. Trees grown in the area are Kikar, Shisham, Mulberry, Fresh and Phalahi.

b) Production of Timber and Firewood

The production of Timber and Fire-Wood in the district during the period 2008-09 to 2010-11 is given in Table 6.

TABLE-6

**Production of Timber & Firewood
(2008-09 to 2010-11)**

Year	Production (Cubic Meter)	
	Timber	Firewood
2008-09	2164.32	-
2009-10	5383.35	-
2010-11	3745.14	-

Source: Forestry, Wildlife and Fisheries Department

3.3 LIVESTOCK POPULATION

a) Animal Population

The animal population of the district is given in Table - 7.

TABLE - 7

ANIMAL POPULATION

Animals	Population (Th Heads)
Buffaloes	658
Cattle	513
Sheep	165
Goats	682

Source: Livestock & Dairy Development Department.

b) Poultry Population

As per Punjab Development Statistics 2011, there are 680 broiler and 35 layer poultry farms in the district Khanewal having rearing capacity of 15400 and 153 thousand birds respectively.

c) Availability of Hides / Skins and Slaughter House Wastes

As per Punjab Development Statistics 2011, 157700 animals were slaughtered in recognized / un-recognized slaughter houses in the district during the year 2009-10, which is a reasonable estimate of the availability of hides and skins in the district.

The availability of slaughter house by - products is estimated as under:-

Blood	58.19 M.Tons
Bones	274.24 M.Tons
Tallow	52.04 M.Tons

d) Production of Wool

The sheep population of 165 thousand heads in the district is expected to yield about 165 M.Tons of coarse wool annually.

3.4 ORES AND MINERALS

There is no major mineral in the district.

CHAPTER - IV

INFRASTRUCTURAL FACILITIES

4.1 COMMUNICATION NETWORK

a) Road Links

The district has a total metalled road-length of 2203.03 Kilometres. The District is linked with Multan, Lodhran, Sahiwal, Vehari, TT Singh and Jhang districts through metalled road.

b) Rail Links

The main Peshawar - Karachi railway line passes through Khanewal district. The district is linked with Multan, Lodhran, Sahiwal and Jhang districts through railway network.

4.2 GENERAL QUALITY AND AVAILABILITY OF SUB-SOIL WATER

Under ground water resources are generally adequate throughout the district. The sub soil water is sweet throughout the district and suitable for industrial purposes.

4.3 EFFLUENT DISPOSAL FACILITIES

There is no mentionable nullah available in the district. However, effluent of industry can be disposed off in the rivers namely Chenab and Ravi after pre-treatment to remove harmful ingredients and with prior written permission from Irrigation and Power Department, Government of the Punjab.

4.4 POWER SUPPLY

There are 7 grid stations in the district ranging in capacity from 66 KV to 132 KV.

4.5 NATURAL GAS AVAILABILITY

At present natural gas is available in the district.

4.6 TELE-COMMUNICATION FACILITIES

There are 21 (PTCL) telephone exchanges operating in the district, ranging in capacities from 300 lines to 8248 lines. Cellular phone services are available in the district. 1. NTC telephone exchange is also operating in the District.

4.7 SOCIAL INFRA-STRUCTURAL FACILITIES

Social infra-structural facilities available in the district are given in Table - 8.

TABLE - 8

SOCIAL INFRA-STRUCTURAL FACILITIES

Tehsil	Primary / Middle / high / higher secondary School	College	Hospital	Police station	Railway stations	Post office	Banks
Khanewal	412	2	3	5	14	70	35
Kabirwala	584	5	4	6	4	36	27
Mian-channu	387	3	2	4	2	87	25
Jahanian	248	2	2	2	4	2	12
Total	1631	12	11	17	24	195	99

Source: Punjab Development Statistics 2011 / Respective District Offices.

4.8 INDUSTRIAL ESTATE

Punjab Small Industries Corporation has also established two Industrial Estates in the district. Information regarding the sizes of the plots, allotted and vacant is given in Table-9.

TABLE - 9

**SIZES AND AVAILABILITY OF PLOTS IN THE
INDUSTRIAL ESTATE**

Name of Industrial Estate	Size of Plots (Acres)	Total No. of Plots	Allotted Plots	Vacant Plots
Small Industrial Estate, Khanewal	2 Kanals	103	98	5
	1 Kanals	162	146	16
	10 Marla	48	36	12
Small Industrial Estate, Mian Channu	2 Kanals	60	60	-
	1 Kanals	63	62	1
	10 Marla	34	34	-

Source: Punjab Industrial Estates Development and Management Company

4.9 DRY PORT

There is no dry port in the district.

4.10 INDUSTRIAL POLICY

- Foreign investors are permitted to hold 100% of the equity of industrial projects without any permission of the Government.
- No prior Government sanction is required for establishment of an industry outside Ex-Municipal Territorial Limits of Town

Committees / Municipal Corporation irrespective of its cost and size except the following covered under schedule 'C':-

- a. Arms & Ammunition.
 - b. Security Printing Currency & Mint.
 - c. High Explosives.
 - d. Radio Active Substances.
 - e. Alcoholic Beverages or Liquors.
1. No industrial unit mentioned in Schedule-A of the notification No. AEA-III-4-3-9/91, dated 30.09.2002 or industrial unit exceeding a total cost of Rs. 100.00 million shall be set up within 10 miles (16 Kms) of international border:

List of Manufacturing Industries

- a) Basic Metal Industry.
- b) Petro-Chemical Industries (Excluding Products Industries).
- c) Large size Machine Tool Factories (Limit of Investment to be determined).
- d) Heavy Foundry Works.
- e) Heavy Electric Complexes.
- f) Heavy Mechanical Complexes.
- g) Electronics Industries.
- h) Major Vehicle Assembly Plants.
- i) Ordnance Factories.
- j) Explosives, Nitric acid and Sulphuric acid plants.
- k) Vehicular Tires and Tubes Industries.

- l) Locomotives and Railway Carriage manufacturing plants.
 - m) Government Mint.
 - n) Security Printing Press involved in whole time printing of sensitive documents / currency notes.
 - o) Manufacture of optical glass and optics.
 - p) Nickle cadmium battery industries.
 - q) Nuclear / Separation Plants.
 - r) Large Power Generating Stations.
 - s) Large oil Storage units.
 - t) Oil refineries.
2. No industrial unit shall be set up in areas affected by flood flowing transversely in the strip of one mile of either side across the Grand Trunk Road from Shahdara Town to Muridke Town, without prior permission of the Provincial Government.
3. According to the notification No. AEA-III-3-5/2003 (Vol-III), dated 06.12.2006, “no new sugar mill shall be setup and no enlargement in capacity of the existing sugar mills is allowed in the Province”.
4. Each district Government may declare “negative area” for industry. Such “negative area” be determined by a District Committee after consultation with all stake-holders in light of general policy guidelines issued by the Industries, Commerce & Investment

Department and exemptions allowed under Schedule 'B' of this Notification as under:

List of Service Industries

- a) Furniture (excluding Band Saw) and also excluding storing Timber / Wood.
- b) Tailoring/ Readymade garments.
- c) Laundry / Dry Cleaning.
- d) Bakery (excluding confectionery).
- e) Syrups (excluding squashes)
- f) Cosmetics.
- g) Service workshop.
- h) Cereal Products like vermicilles.
- i) Candles making.
- j) Printing and Packaging.
- k) Hand loom carpet weaving.
- l) Hotels.
- m) Bidi manufacturing.
- n) Handmade shoes / shoe repairing workshop.
- o) Spooling and thread balls.
- p) Small Hosiery units employing not more than 10 workers.
- q) Atta Chakkies.
- r) Installation of Chaff cutters.
- s) Cotton Grading.
- t) Other small industrial undertakings which do not fall under the Sixth schedule of the Punjab Local Government Ordinance, 2001.

“Other small industrial undertakings” would mean an industrial undertaking in which the total fixed assets (including the cost of land)

do not exceed Rs.1.0 million (Rupees one million).

5. No industrial unit mentioned in Schedule 'C' of this Notification shall be set up anywhere in the Punjab without prior approval of the Government.
6. The Government reserves the right to refuse establishment / enhancement of any industrial undertaking which is in contravention of the public interest, ecology or any other law / rules for the time being in force.
7. The Government may relax any of the provisions of this notification in case of a particular unit or industry or class of units or industries.
8. NOC from Environment Protection Department, Govt. of the Punjab is required for setting up new Industries.
 - Tourism has been given the status of industry in accordance with Ministry of Industries & Production Circular No. 1-129/99-INV-IV dated 2nd August 1999.
 - The Housing and Construction Sector has also been declared as industry (Finance Division Notification No. 10(10)/IF-11/98, dated 07.04.1999 and 04.06.1999.

- In accordance with Government notification No. 3(2)/97-INV-IV dated 05.05.1997, Computer Software and Information Technology (IT) have been declared as Industry.

4.11 DECLARATION OF NEGATIVE AREAS

In pursuance of the Clause 4 of the Location Policy notified on 30-09-2002, by the Industries Commerce & Investment Department, Government of the Punjab, the District Govt. Khanewal has declared the following negative areas:-

Tehsil Khanewal

- a) 03 Kilometer from the center of the City of each side excluding Khanewal Kabirwala Road.
- b) Within right of way 220 ft. from the G.T Road on either side.

Tehsil Jahanian

- a) 03 Kilometer from the center of the City to each side.
- b) Within right of way 220 ft. from the G.T Road on either side.

Tehsil Mian Channu

- a) 03 Kilometer from the center of the City to each side
- b) Within right of way 220 ft. from the G.T Road on either side.

Tehsil Kabirwala

- a) 03 Kilometer from the center of the City to each side excluding Kabirwala Khanewal Road.
- b) Within right of way 220 ft. from the G.T Road on either side.

The following will also be observed for the establishment of new industrial undertaking.

- a) No Industrial Unit mentioned in schedule A of this notification or any industrial unit not mentioned in schedule B will be established in Negative Area.
- b) No Industrial Unit will be established in Flood affected areas.
- c) No Sugar Mills shall be established in the District.
- d) No Industrial Unit mentioned in schedule C of this Notification shall be set up without prior approval of the Government.
- e) The Tanneries Units shall be established only in Industrial Estates approved by the Government of the Punjab.
- f) The rules of Highway Department will also be observed strictly.

- g) No unit shall be established within 50 feet of either side of High Pressure Pipe Line.
- h) 3 KM area around the strategic areas/installation will also be prohibited for the Industrial establishment.
- i) The Industrial Units already functioning in the approved Negative Area shall be regularized.
- j) All other clauses of policy notified by the Provincial Government, from time to time will be applicable.
- k) The District Government reserves the right to refuse the establishment/enhancement of any industrial undertaking which is in contravention of public interest ecology any other Laws/Rules for the time being enforce.
- l) The Laws of Local Government and Environmental Department shall remain applicable and compliance of the respective Laws will be insured by the concerned Department.

4.12 DECLARATION OF SPECIFIED POSITIVE AREAS

Vide Finance Act, 2008, the Government of Pakistan has enacted a new section “23A” in the Income Tax Ordinance 2001. The Section “23A” is reproduced below:-

“First year allowance.- (1) Plant, Machinery and equipment installed by any industrial undertaking setup in specified rural and under developed areas, and owned and managed by a company shall be allowed first year allowance in lieu of initial allowance under Section 23 at the rate specified in Part II of the third schedule against the cost of the “eligible depreciable assets” put to use after July 1st, 2008.

(2) The provision of Section 23 except sub-sections (1) and (2), thereof, shall mutatis mutandis apply.

The Federal Government may notify “Specified areas” for the purpose of sub-section(1)”

In pursuance of the above mentioned notification District Government Khanewal has identified and approved the following specified positive areas for setting up industrial undertakings:-

Tehsil Khanewal

- a) Outside 03 Kilometer from the center of the City to each side excluding Khanewal Kabirwala Road.
- b) Outside right of way 220 ft. from the GT Road on either side.

Tehsil Jahanian

- a) Outside 03 Kilometer from the center of the City to each side.
- b) Outside right of way 220 ft. from the GT Road on either side.

Tehsil Mian Channu

- a) Outside 03 Kilometer from the center of the City to each side
- b) Outside right of way 220 ft. from the GT Road on either side.

Tehsil Kabirwala

- a) Outside 03 Kilometer from the center of the City to each side.
- b) Outside right of way 220 ft. from the GT Road on either side.

4.13 INCENTIVES FOR INVESTORS TO SETUP A UNIT IN EPZs

- a) According to EPZs Authorities, following incentives are available in the Export Processing Zones
 - 1. 100% ownership rights.
 - 2. 100% repatriation of capital & profits.

3. No minimum or maximum limit for investment.
4. Duty free imports of machinery, equipment & material.
5. No sales tax on input goods including electricity & gas bills.
6. Obsolete/old machinery can be sold in domestic market of Pakistan after payment of applicable duties & taxes.
7. Freedom from national import restrictions.
8. Foreign exchange control regulation of Pakistan not applicable.
9. Defective goods/waste can be sold in domestic market after payment of applicable duties, maximum upto 3% of total value of export.
10. Duty free vehicle allowed under certain conditions. After 5 years of use, vehicles can be disposed off in domestic market on payment of duty on depreciated value.
11. Domestic market of Pakistan available on same conditions as for imports from other countries.
12. Units operating in EPZs can undertake sub-contracting for units of tariff area subject to payment of duty and taxes on value addition only.
13. Only EPZA is authorized to collect Presumptive tax at the time of export of goods which would be final tax liability.

14. EPZ units allowed to supply goods to Custom manufacturing bonds.
 15. Production oriented labour laws to be solely regulated by the Authority.
 16. EPZ manufacturer will be treated at par with bonded manufacturers in tariff area for any future incentives to be announced for exporters.
 17. Relief from double taxation subject to bilateral agreement.
- b) Facilities to Investors for setting up a unit in EPZs of Pakistan.
1. One window service and simplified procedure.
 2. All infrastructural facilities like water, electricity, gas, telex, fax and telecommunication system are made available by EPZA.
 3. Skilled & un-skilled labour available in abundance.
 4. Sub-contracting without limit on variety and quantity is allowed outside the zone as well as within the zone.
 5. The garment manufacturing units located in Export Processing Zones are eligible to participate in auction of quotas.
 6. GSP concessions given by various countries to imports from Pakistan are available to the manufacturers in the zone.

7. Peaceful, secure and environmentally protected / pollution free work area.
8. Inter-unit transfer of finished goods among exporting units allowed.

4.14 PAKISTAN'S INVESTMENT POLICY - KEY FEATURES

General

- The investment policy is liberal and business friendly as it has been designed in consultation with businessmen, investors and representative forums as well as the Multinational Companies (MNCs).
- It provides equal investment opportunities for both domestic and foreign investors.
- All economic sectors open for FDI (Foreign Direct Investment).
- 100% foreign equity allowed.
- No government sanction required.
- Foreign investment on repatriable basis is allowed in all economic sectors including manufacturing, agriculture, services, infrastructure and social sectors.
- Foreign investment in Agriculture projects allowed on joint-venture basis by associating minimum local equity of 40%.
- Remittance of Royalty, Technical & Franchise Fee, Capital, Profits, Dividends allowed.
- Minimum foreign equity for non-manufacturing including service sectors has been reduced

from \$ 0.3 to \$ 0.15 million. In Agriculture, infrastructure and social sectors, it is \$ 0.3 million.

Tariff and Tax Incentives

- To keep Pakistan competitive in international tariff 5% customs duty has been allowed on import of plant and machinery which is not manufactured locally.
- Sales tax 0% across the board.
- 0% duty on import of raw material for export industry.
- 0% duty on import of agriculture machinery.
- Tax relief in shape of Initial Depreciation Allowance (IDA) has been provided as 50% of machinery cost across the board.
- Tax relief has also been provided for expansion and Balancing, Modernization & Replacement (BMR) in existing industries.

Policy Package of Pakistan

Policy Parameters	Mfg. Sector	Non-Manufacturing Sectors		
		Agriculture	Infrastructure & Social	Services including IT & Telecom Services
Govt. Permission	Not required except for specified	Not required except specific licences from concerned agencies.		

	industries*			
Remittance of capital, profits, dividends, etc.	Allowed	Allowed		
Upper Limit of foreign equity allowed	100%	100%	100%	100%
Minimum Investment Amount (M \$)	No	0.3	0.3	0.15
Customs duty on import of PME**	5%	0%	5%	0-5%
Tax relief (IDA***, % of PME cost)	50%	50%		
Royalty & Technical Fee	No restriction for payment of royalty & technical fee.	Initial lump-sum up to \$100,000 Max Rate 5% of net sales - Initial period 5 years		

* Specified Industries:

- i) Arms and ammunitions
- ii) High Explosives
- iii) Radioactive substances
- iv) Security Printing
- v) Currency and mint

** PME = Plant, Machinery and Equipment

*** IDA = Initial Depreciation Allowance

4.15 INDUSTRIAL FINANCING FACILITIES

Following Financial Institutions in the country are providing various types of fixed investment

industrial financing in the foreign and local currency to the industrial sector for establishment of new industrial units as well as for Expansion, Balancing, Modernization and Replacement (BMR) of existing industrial units within the frame-work of industrial/financial policies of the Government of Pakistan.

- 1 AlBaraka Bank (Pakistan) Limited.
- 2 Allied Bank Limited.
- 3 Askari Bank Limited.
- 4 Bank Alfalah Limited.
- 5 Bank Al-Habib Limited.
- 6 Bank Islami Pakistan Limited.
- 7 Barclays Bank PLC.
- 8 Burj Bank Limited.
- 9 Citi Bank N.A.
- 10 Deutsche Bank A.G.
- 11 Dubai Islamic Bank Pakistan Limited.
- 12 Faysal Bank Limited.
- 13 First Women Bank Limited.
- 14 Habib Bank Limited.
- 15 Habib Metropolitan Bank Limited.
- 16 HSBC Bank Middle East Limited.
- 17 Industrial and Commercial Bank of China
- 18 Industrial Development Bank of Pakistan.
- 19 JS Bank Limited.
- 20 KASB Bank Limited.

- 21 MCB Bank Limited.
- 22 Meezan Bank Limited.
- 23 National Bank of Pakistan.
- 24 NIB Bank Limited.
- 25 Oman International Bank S.A.O.G.
- 26 S.M.E. Bank Limited.
- 27 Samba Bank Limited
- 28 Silk Bank Limited.
- 29 Sindh Bank Limited.
- 30 Soneri Bank Limited.
- 31 Standard Chartered Bank (Pakistan) Limited.
- 32 Summit Bank Limited
- 33 The Bank of Khyber
- 34 The Bank of Punjab
- 35 The Bank of Tokyo-Mitsubishi Limited.
- 36 The Punjab Provincial Cooperative Bank Limited.
- 37 United Bank Limited.
- 38 Zarai Taraqati Bank Limited.

Source: State Bank of Pakistan

List of Development Financial Institutions (DFIs)

- 1 Bankers Equity Limited.
- 2 House Building Finance Company Limited.

- 3 Pak Brunei Investment Company Limited
- 4 Pak-China Investment Company Limited.
- 5 Pak Oman Investment Company Limited.
- 6 PAIR Investment Company Limited.
- 7 Pakistan Kuwait Investment Company Limited.
- 8 Pak-Libya Holding Company Limited.
- 9 Saudi Pak Industrial & Agricultural Investment Company Limited.

Source: State Bank of Pakistan

Besides the financial institutions mentioned above a number of Leasing Companies, Modaraba Companies, Investment Banks are also providing financing facilities to the industrial sector. Punjab Small Industries Corporation also extends financial assistance to the small/cottage industrial units.

4.16 SALIENT FEATURES OF LOANING SCHEME OF PSIC

Punjab Small Industries Corporation (PSIC) is a body corporate enacted in 1973. One of core functions of PSIC is financial assistance programme for prospective entrepreneurs, skilled youth, artisans and craftsmen all over the Punjab. The priority sectors are as under:

- Service Industries.

- Agro / Agro Support Industries.
- Food Processing Industries.
- Export Oriented Industries.
- Import Substitution Industries.
- Information Technology (IT) Project.
- Handicraft Industry.
- Women Enterprises.

PSIC started credit assistance programme during 1984 and completed 13 schemes up till now. An amount of Rs. 4079 Million has been disbursed to 19,580 entrepreneurs in 36 Districts of Punjab with the recovery rate of 88% that indicates proper utilization of loans.

The maximum loan limit is Rs.3 Million with debit equity ratio of 60:40. The credit assistance facility available for new projects, BMR and Working Capital. The markup rate varies from 0% to 12%. The repayment period of loan is from 3 years to 6 years with grace period of 3 months to 6 months.

Recently, Government of Punjab has provided an amount of Rs. 2000 Million for disbursement through Service Provider Organization i.e. M/s Akhuwat to un-employed and skilled persons of PVTC, TEVTA, SANATZAR's of Social Welfare Department or other unemployed youth having good business plan.

Up till now, M/s Akhuwat has disbursed an amount of Rs. 1650.00 Million to 94,960 poor household in 33 vocations with average loan size of Rs. 17,382 in Punjab through its 142 offices in 30 districts of the Punjab.

To promote the traditional handicrafts in Punjab, PSIC has also launched dedicated credit assistance schemes for the craftsmen at subsidized markup rates. These craftsmen have also been provided marketing facilities through Pakistan Handicrafts Shops.

4.17 SALIENT FEATURES OF THE SEZ BILL 2012

The Law of SEZ has been made to meet the global challenges of competitiveness to attract FDI. The Law/bill will allow to create industrial clusters with liberal incentives, infrastructure, investor facilitation services to enhance productivity and reduce cost of doing business for economic development and poverty reduction. The Law further envisages to reduce processes through SEZ in Pakistan. The establishment of SEZs will attract both domestic as well as international investors. The SEZ would play a pivotal role in the economic development of Pakistan as has been witnessed in case of China, Malaysia, Thailand and other states.

It extends to the whole of Pakistan and overrides other laws (anything contrary);

- All SEZ whether Public, Public-Private or Private-Private to be governed under this Act;
- The Board of Approval (BOA) headed by the Prime Minister of Pakistan with the Minister for Finance as the Vice Chairman shall meet as frequently as required but not less than twice a year and decisions shall be taken by a majority of the total membership present and voting;
- SEZs will have exemption from customs duties & taxes for all Capital Goods imported into Pakistan for the development , operations and maintenance of a SEZ;
- Exemption from all taxes on income accruable in relation to the development and operations of the SEZ for a period of ten years, starting from the date of signing of the Development Agreement.
- Zone Enterprises have exemption from custom duties etc. on imports of Capital Goods;
- Exemption from taxes on income for a period of 10 years starting from the date the Development certifies that the Zone Enterprise has commenced commercial operations in the relevant SEZ;

There is no limit to the economic potential of Pakistan. The challenge is to create the enabling environment in which this can be realized. Special Economic zones bill is a step towards the economic stability in the country.

4.18 STRATEGIC TRADE POLICY FRAME WORK (2012-2015)

The government unveiled on 29 January, 2013 a medium term (2012-2015) Strategic Trade Policy Framework, setting a cumulative export target of \$95 billion for three years. The framework, the second announced by the federal government will be implemented with a funding of Rs. 26.14 billion. In the first year, Rs.5 billion will be spent on providing subsidies and support to identified sectors.

The focus of the policy is on promoting regional trade and regulatory efficiency, promoting agro-processed exports, increasing exports from less developed regions, revamping export promotion agencies, increasing green exports, enhancing role of women in exports and pursuing product and market development and diversification.

The salient features of the policy include institutional interventions, export development initiatives and regulatory amendments. The policy, offers cash assistance to 14 sectors along with 19 regulatory frameworks, including ban on products as a protective measure against environmental and health hazards. The new framework is designed to provide assistance only to the non-textile sectors.

Institutional Measures: The government will setup institutions like an Export-Import (Exim) Bank, Pakistan Land Port Authority; Leather Export Promotion Council and a Services Trade Development Council.

Export Development: Major initiatives in the Policy included allowing mark-up rate support of two per cent on prevailing LTFF for future import and purchase of machinery. An allocation of Rs.500 million has been proposed for schemes to be implemented this year. The total amount to be spent in three years is projected at Rs.3 billion. A mark-up support of 1.5% will be provided on export finance scheme (EFS) to selected sectors at a cost of Rs. 1.25 billion, including Rs. 200 million in 2012-2013.

The sectors for EFS support are fish and fish preparations, fruit and vegetables, spices, meat and meat preparations, carpets and rugs, sports goods, footwear, leather products, surgical goods, cutlery, onyx products, pharmaceuticals, electric fans, transport equipment, electrical machinery, specialized machinery, furniture, handicrafts and computer-related services.

An amount of Rs.14 billion will be given as adhoc relief at three per cent of FoB to offset the impact of higher cost of utilities for exporters in selected sectors. The measure will cost Rs.3bn this year. An amount of Rs.2 billion-Rs125 million will be

allocated for marketing development assistance for regional countries.

A Rs. 25 million allocation has been proposed for export promotion campaigns for agro-processed products; Rs. 400 million for encouraging opening of retail outlets; and Rs.400m for subsidizing 50% cost of plant and machinery for establishing processing plants for meat, fruits, vegetables, dates and olives in Azad Jammu and Kashmir, Baluchistan, Gilgit - Baltistan and Khyber Pakhtunkhwa.

An amount of Rs.30 million will be allocated for upgrading rice inspection laboratories, Rs. 20 million for subsidy at 100% of the prevailing mark-up rate for establishing mining and processing units in Khyber Pakhtunkhwa and Baluchistan.

Another Rs.20 million has been allocated for strengthening women's chamber of commerce and industry, Rs.32 million for setting up a resource management cell at the ministry of commerce, Rs.28 million for establishing leather export promotion council and Rs.70 million for services export development council.

Regulatory Measures

Unrestricted import of used motorized wheelchairs and five-year-old used or second-hand ambulances has been allowed. Two per cent of export proceeds will be allowed to manufacturers-cum-

exporters for duty-free import of accessories for value-addition for leather garments and made-ups. Import of non-hazardous plastic scrap has been allowed for industrial consumers for use as raw material. A ban has been imposed on import of plastic waste, hospital waste, used sewerage pipes and chemical containers.

Import of non-sterilized surgical needles and syringes will be restricted to industrial units, condition of Euro-II may be made applicable on import of all types of specialized vehicles, such as crane-mounted lorries, dump trucks and mixtures lorries. The import of used sprinkle lorries will be restricted to a maximum of five year old. All goods from banned list imported in commercial quality shall be allowed to re-export at importer/shipping lines cost. The imported substandard goods from the restricted list should be destroyed within a period of six months without offering any release.

Import of waste and scrape of tyres in completely shredded/ cut form will only be allowed to industrial consumers; domestic standards will equally apply to imported goods as well.

Construction engineering and electrical companies will be allowed to retain abroad the exported machinery to carry out work on export-cum-import basis with the condition that they will import the same on the conclusion of the contract against indemnity bond.

All exporters of edible products are to be registered and export of vegetable ghee and cooking oil will be allowed in packaging of up to 25kg to encourage value-addition.

Steps to contain Environmental & Health Hazards

- Ban on import of plastic waste/scrap-hospital waste, used sewerage pipes and chemical containers.
- Restricting import of non-sterilized surgical needles and syringes to industrial units.
- Only the more fuel efficient Euro-II category crane-mounted lorries, dump trucks, mixture lorries, etc, will be imported.
- Imported used tyres will only be allowed for industrial use.

Institutions to be Setup

- Export-Import Bank.
- Pakistan Land Port Authority.
- Leather Export Promotion Council.
- Service Trade Development Council.

CHAPTER - V

EXISTING PATTERN OF INDUSTRIAL DEVELOPMENT

5.1 DESCRIPTION OF EXISTING INDUSTRIES

There are about 263 large, medium and some small industrial units in the district. Industry-wise installed capacity of major industrial units is given in Table-10.

TABLE-10

Industry-wise Installed Capacity

Sr. #	Industry	No. of units	Annual Installed Capacity
1	Agricultural Implements	64	13607 Nos.
2	Beverage	1	1600 Crates / Day
3	Blending of Tea	1	50000 M.Tons
4	Biscuit	1	300 M.Tons
5	Chip / Straw Board	1	1920 Th. Sq. Ft.
6	Cold Storage	46	748500 Bags, 3 Expellers
7	Cotton Ginning & Pressing	60	271 Sawgins, 67 Press, 85 Expellers
8	Cement Product	1	2,00,000 Nos.
9	Dairy Products	1	15000 M.Tons Milk Powder, 3000 M.Tons Noodles.
10	Flour Mills	21	2360 M.Tons/ Day
11	Fruit Juices	2	80000 Crates
12	Hatchery	4	33520 Nos.

13	Industrial Machinery	1	300 Nos, 3 Expellers
14	Paper & Paper Board	3	7410 M.Tons
15	Poultry Feed	1	80000 M.Tons
16	Power Generation	2	607 MW
17	Packages	1	1200 M. Tons.
18	Plastic Products	2	450 Nos.
19	Poly Propylene Bags	1	600 M. Tons
20	PVC Yarn	1	450 M.Tons
21	Rice Mills	20	57 Hullers, 9 Shellers
22	Seed Processing	3	56000 M.Tons
23	Solvent Oil Extraction	1	12000 M.Tons
24	Sugar	1	3000 TCD
25	Sizing of Yarn	1	750 M. Tons
26	Textile Made ups	1	26 Machines
27	Textile Spinning	12	126524 Spindles, 4400 Rotors
28	Textile Weaving	4	490 Looms
29	Vegetable Ghee / Cooking Oil	2	79200 M.Tons
30	Wire & Cable	1	800 M.Tons
31	Woollen Textile Spinning /Weaving	2	720 Spindles, 300 M.Tons M.M. Yarn.

Source: District Officer (E&IP), Khanewal.

Note: For further details visit: www.doi.pitb.gov.pk

CHAPTER - VI

FUTURE INDUSTRIAL POTENTIAL

Keeping in view the availability of raw material, skilled labour, linkage between the industrial units, local / national / international demand, future industrial potential of district Khanewal is discussed hereunder:

It would, however, be kept in mind that though the above mentioned factors facilitate the success of any industrial unit, yet the entire success depends upon the investors / entrepreneurs and the capabilities of the personnel having the managerial control because any of these factors, if lacking is manageable. Therefore, it is advisable that detailed feasibility of industrial projects must be carried out before making final decision for investment.

6.1 AGRICULTURE

Main crops of district Khanewal are wheat, cotton, sugarcane, Rice and Maize. The average annual production of wheat, sugarcane, Rice and Maize during the period 2008-09 to 2010-11 was about 690.14, 435.08, 48.06 and 89.8 thousand M. Tons respectively and of cotton was about 695.78 thousand bales.

Among fruits, citrus, mango and guava are grown in large quantities. Their average annual production during the period 2008-09 to 2010-11 was about 104.271, 156.933 and 19.486 thousand M.Tons respectively. A variety of vegetables are also grown in the district (Ch.3, Section 3.1).

In district Khanewal there are 12 textile spinning mills, 4 weaving mill 21 flour mills, 2 vegetable ghee mills, one sugar mill, one solvent oil extraction unit, a number of cotton ginning/pressing factories and oil expelling units, one Beverage unit and two woollen textile spinning mills.

In view of the availability of cotton, fruit, vegetables and the existing industrial pattern, there still exists potential for textile spinning especially for textile weaving / processing, hosiery, terry towel, surgical cotton, household/hospital and bed sheets, surgical bandage and fruit juices, squashes/ jams/ jellies/ pickles and vegetable dehydration.

6.2 LIVESTOCK

As per Punjab Development Statistics 2011, the population of cattle, buffaloes, sheep and goats was 513, 658, 165 and 682 thousand heads respectively. As regards poultry, there are 680 broiler and 35 layer poultry farms having rearing capacity of 15400 and 153 thousand birds

respectively. The annual availability of hides/skins is estimated at 157700 pieces.

There is already one milk processing unit and 4 Hatcheries. However, there exists good scope for dairy farms, cattle/sheep/goats fattening farms as well as for dairy products, breeding poultry farms and tannery.

6.3 INDUSTRY

Besides textile mills, sugar mills, vegetable ghee mills, milk processing unit, etc, there are also a number of engineering goods industries which are manufacturing a variety of agricultural implements.

In view of existing engineering base, there exists good prospects for Foundry, Die-Casting, Wrenches/Spanners/Hand Tools, Cast Iron Pipes, Welding Electrodes, Aluminium utensils, Water-Pumps, etc. manufacturing units.

A paper-Cone Manufacturing Unit and Tins-Making Unit may also be established to meet the requirements of textile mills and vegetable ghee manufacturing units.

6.4 DEMAND BASED INDUSTRIES

Considering the general requirements of the district, there seems to be good potential for

biscuits, vermicellies, packing boxes, PVC shoes, laundry soap, steel doors/ windows, etc.

The agricultural nature of the district also reflects good prospects for insecticides/pesticides manufacturing unit.

6.5 LIST OF IDENTIFIED PROJECTS

As per discussion given in Sections 6.1 to 6.4, the following projects are identified for investment in the district:

- Agriculture Waste / by products raw material based industries for maximization of value addition chain.
- Aluminium Utensils
- Biscuits
- Cast iron Pipes
- Cattle/Sheep/Goats Fattening Farms
- Dairy Farms
- Die-Casting
- Dairy products (Cheese, Butter, Yoghurt)
- Energy conservation / efficiency
- Foundry
- Fruit Juice/Squashes/Jams/Jellies/Pickles
- Hosiery
- Household/Hospital Bed Sheets
- Insecticides/Pesticides
- PVC Shoes
- Packing Boxes
- Paper Cones for Textile Mills

- Power generation through coal and other alternate fuels
- Power generation through bagasse
- Surgical Cotton
- Surgical Bandages
- Steel Doors/Windows
- Tannery
- Terry Towel
- Tins-Making for Vegetable Ghee
- Textile Spinning, Weaving and Processing
- Vermicellies
- Waste heat recovery systems
- Water Pumps
- Welding Electrodes
- Wrenches/Spanners/other Hand Tools

Directory of Industrial Establishments, Khanewal

Sr. No.	Name / Address of unit	Phone No. / Website	Industry	Estb. Year	Investment (Th.Rs.)	Emp	Product	Annual Installed Capacity
1	Afzal Zari Alat Maker Multan Road Jahania		Agricultural Implements	1994	200	5	Agricultural Implements	10 Nos.
2	Al Hammad Zarai Industries Near Railway Crossing Burewala Road Mian Channu	0300-7891446	Agricultural Implements	1997	200	7	Agricultural Implements	120 Nos.
3	Al Hyder Mechanical Works Gt Road Mian Channu	2663198	Agricultural Implements	1981	320	5	Agricultural Implements	100 Nos.
4	Al Meraj Engineering Works Burewala Road Mian Channu	2660418	Agricultural Implements	1991	1250	6	Agricultural Implements	200 Nos.
5	Al-Hilal Mechanical Industries Gt Road Mian Channu	2662998	Agricultural Implements	1992	1350	10	Agricultural Implements	50 Nos.
6	Arain Agro Industries Gt Road Mian Channu	2660371	Agricultural Implements	1984	1200	7	Agricultural Implements	350 Nos.
7	Ashraf Agri Workshop Chak No.50/15-L Mian Channu		Agricultural Implements	1994	150	5	Agricultural Implements	200 Nos.
8	Awami Zari Industries G.T. Road Mian Channu	2661475	Agricultural Implements	1963	100	12	Agricultural Implements	34 Nos.
9	Awan Zarai Industries Gt Road Mian Channu	2661226	Agricultural Implements	1984	750	7	Agricultural Implements	500 Nos.

Sr. No.	Name / Address of unit	Phone No. / Website	Industry	Estb. Year	Investment (Th.Rs.)	Emp	Product	Annual Installed Capacity
10	Bhatti Zari Industries Gt Road Mian Channu	2660676, 2663660	Agricultural Implements	1979	300	5	Agricultural Implements	500 Nos.
11	Bhutta Agro Engineering G.T. Road Mian Channu	2663637, 2661374	Agricultural Implements	1995	200	7	Agricultural Implements	20 Nos.
12	Centre For Agricultural Machinery Industries (Cami) Sie Musawirk Mian Channu	2663132	Agricultural Implements	1989	3000	39	Agricultural Implements	200 Nos.
13	Ch: Ali Muhammad Steel Works G.T. Road, Mian Channu		Agricultural Implements	1993	160	7	Agricultural Implements	10 Nos.
14	Chohan Engineering Works Burewala Road Mian Channu	2660998	Agricultural Implements	1992	160	14	Agricultural Implements	500 Nos.
15	Dogar Zarai Industries Burewala Road Mian Channu	2660156	Agricultural Implements	1979	1200	12	Agricultural Implements	500 Nos.
16	Faqir Muhammad & Sons Pull 14 Jahania		Agricultural Implements	1990	130	6	Agricultural Implements	30 Nos.
17	Ghazi Industries (Pvt) Ltd. G.T. Road, Mianchannu	2663877, 2663777	Agricultural Implements	1963	3500	20	Agricultural Implements	7100 Nos.
18	Ghulam Rasool Mechanical Works Pull 14 Jahania	2210562	Agricultural Implements	1990	500	5	Agricultural Implements	50 Nos.

Sr. No.	Name / Address of unit	Phone No. / Website	Industry	Estb. Year	Investment (Th.Rs.)	Emp	Product	Annual Installed Capacity
19	H Maqbool & Sons (Karmanwalay) Girls College Road Mian Channu	2663997	Agricultural Implements	1980	1500	9	Agricultural Implements	500 Nos.
20	Hafiz Industries Pall 14 Jahania		Agricultural Implements	1991	150	5	Agricultural Implements	110 Nos.
21	Haidiry Key Zari Alat Multan Road Kabirwala	0346-7028188	Agricultural Implements	1985	50	6	Agricultural Implements	30 Nos.
22	Hm Idrees Bhutta (Bhutta Industries) Gt Road Mian Channu	2004251	Agricultural Implements	1970	6250	6	Agricultural Implements	125 Nos.
23	Imran Agri. Impl. Chak Sahana Road		Agricultural Implements	1994	130	6	Agricultural Implements	200 Nos.
24	Ittefaq Key Zari Alat Kacha Khu Road Abdul Hakim	0301-6914668	Agricultural Implements	1995	100	6	Agricultural Implements	40 Nos.
25	Ittehad Industry Pull-14, Jahania	2210550	Agricultural Implements	1980	450	7	Agricultural Implements	65 Nos.
26	Jaffari Industries G.T. Road Mian Channu	2663916	Agricultural Implements	1985	250	7	Agricultural Implements	75 Nos.
27	Jallender Zari Alat G.T. Road Mian Channu		Agricultural Implements	1994	140	6	Agricultural Implements	20 Nos.
28	Jamal Industries Gt Road Mianchannu	2660299, 2661699, 2663699	Agricultural Implements	1979	8000	20	Agricultural Implements	450 Nos.
29	Karmanwaly Zari Industries G.T. Road, Mianchanu	2663947, 2661747	Agricultural Implements	1981	1200	30	Agricultural Implements	90 Nos.

Sr. No.	Name / Address of unit	Phone No. / Website	Industry	Estb. Year	Investment (Th.Rs.)	Emp	Product	Annual Installed Capacity
30	Kharral Brothers Mech: Works Thatta Road Jahania		Agricultural Implements	1994	100	6	Agricultural Implements	105 Nos.
31	Khezer Key Zari Alat Multan Road Kabirwala		Agricultural Implements	1990	125	6	Agricultural Implements	100 Nos.
32	Kisan Dost Zarai Industries Multan Road Mian Channu	2664916, 2663203	Agricultural Implements	2000	1800	8	Agricultural Implements	65 Nos.
33	Madina Zari Industries Pull 14 Jahania		Agricultural Implements	1992	130	5	Agricultural Implements	15 Nos.
34	Malik Shaukat Ali Agricultural Industries Burewala Road Mian Channu	2660063	Agricultural Implements	2000	700	7	Agricultural Implements	100 Nos.
35	Master Key Zarai Allat Gt Road Mian Channu	2660497	Agricultural Implements	1996	380	6	Agricultural Implements	500 Nos.
36	Millat Engineering Works Multan Road Jahania	2210775	Agricultural Implements	1990	1100	10	Agricultural Implements	200 Nos.
37	Mughal Industries Pull- 14 Jahania		Agricultural Implements	1978	115	5	Agricultural Implements	43 Nos.
38	Muhammad Rafique Engineerinf Works Pull 14 Jahania		Agricultural Implements	1993	115	5	Agricultural Implements	25 Nos.
39	Muhammad Yousaf & Brothers G.T. Road Mian Channu	2663799	Agricultural Implements	1982	120	7	Agricultural Implements	70 Nos.

Sr. No.	Name / Address of unit	Phone No. / Website	Industry	Estb. Year	Investment (Th.Rs.)	Emp	Product	Annual Installed Capacity
40	Nadeem Kay Zari Allat Multan Road Kabirwala		Agricultural Implements	1992	170	5	Agricultural Implements	25 Nos.
41	National Industries Gt Road Mian Channu	2660406	Agricultural Implements	1993	700	7	Agricultural Implements	180 Nos.
42	New Al-Madina Zari Allat Khenewal Road Kabirwala		Agricultural Implements	1992	160	7	Agricultural Implements	31 Nos.
43	New Hafiz Industries Pull 14 Jahania		Agricultural Implements	1991	145	5	Agricultural Implements	65 Nos.
44	New Millat Engineering Works G.T. Road Mian Channu		Agricultural Implements	1989	150	6	Agricultural Implements	51 Nos.
45	New Millat Engineering Works Multan Road Jahania	2210445	Agricultural Implements	1991	150	6	Agricultural Implements	20 Nos.
46	O.K. Zari Alat Industries Khanewal Road Kabirwala	0300-6889271	Agricultural Implements	1987	160	7	Agricultural Implements	70 Nos.
47	Pak Muslim Key Zari Allat Multan Road Kabirwala		Agricultural Implements	1994	125	5	Agricultural Implements	150 Nos.
48	Rehman Brothers Multan Road Jahania	2210599	Agricultural Implements	1992	150	5	Agricultural Implements	20 Nos.
49	Rizwan Bros: Engineering G.T. Road Mian Channu		Agricultural Implements	1989	170	6	Agricultural Implements	30 Nos.

Sr. No.	Name / Address of unit	Phone No. / Website	Industry	Estb. Year	Investment (Th.Rs.)	Emp	Product	Annual Installed Capacity
50	Roomi Industries Islamia Girls College Road Mian Channu	2664466, 0663203	Agricultural Implements	2001	2800	19	Agricultural Implements	200 Nos.
51	Sabir Mechanical Works Thatta Sadiqabad Jahania		Agricultural Implements	1992	140	5	Agricultural Implements	50 Nos.
52	Sadiq Key Zari Alat Khenewal Road Kabirwala	2411904, 0300-6899412	Agricultural Implements	1990	150	7	Agricultural Implements	50 Nos.
53	Sardar Industries G.T. Road Mian Channu		Agricultural Implements	1985	300	7	Agricultural Implements	150 Nos.
54	Sardar Industries Pull-14 Jahania		Agricultural Implements	1980	150	5	Wheat Thrashers	25 Nos.
55	Shafique Engineer Burewala Road Mian Channu	6882825	Agricultural Implements	2000	600	6	Agricultural Implements	100 Nos.
56	Shamsher Brothers Pull 14 Jahania		Agricultural Implements	1988	100	5	Agricultural Implements	95 Nos.
57	Sharif Mechanical Works Multan Road Jahania	2210932	Agricultural Implements	1981	180	6	Agricultural Implements	20 Nos.
58	Sultan Zari Alat Maker Pull 14 Jahania		Agricultural Implements	1993	115	5	Agricultural Implements	100 Nos.
59	Super Mechanical Works Gt Road Mian Channu	2665730	Agricultural Implements	1984	810	9	Agricultural Implements	110 Nos.

Sr. No.	Name / Address of unit	Phone No. / Website	Industry	Estb. Year	Investment (Th.Rs.)	Emp	Product	Annual Installed Capacity
60	Tahir Agri Implements Zaffarullah Khan Road		Agricultural Implements	1992	130	7	Agricultural Implements	20 Nos.
61	Toor Mech Works Pull 32 Thatta Jahania		Agricultural Implements	1992	200	7	Agricultural Implements	100 Nos.
62	Zafar Zari Allat Kacha Khu Road Abdul Hakim, Kabirwala	0303-7290563	Agricultural Implements	1992	100	7	Agricultural Implements	53 Nos.
63	Zamindar Engineering Workshop Tulamba Road Mian Channu		Agricultural Implements	1993	128	18	Agricultural Implements	20 Nos.
64	Zamindara Zarai Industries Multan Road Near Railway Crossing	2210844	Agricultural Implements	1998	1000	11	Agricultural Implements	100 Nos.
65	Waseem Beverage (Pvt) Ltd., Chak No.146/15-L, Mianchannu	2663583, 2663331	Beverage	1989	20000	C	Beverage	1600 Crates / Day
66	Soney Food Industry Chak 15V Kabirwala Road	2552775	Biscuits	2001	4990	35	Biscuits	300 M.Tons
67	Uniliver Pakistan Ltd Tea Factory 88-A/10-R Brooke Bond Nagar	2556311-2	Blending Of Tea	1974	97000	550	Tea Blending	50000 M.Tons

Sr. No.	Name / Address of unit	Phone No. / Website	Industry	Estb. Year	Investment (Th.Rs.)	Emp	Product	Annual Installed Capacity
68	Concrete Sleeper Factory Pakistan Railway Lahore Road	2553431	Cement Products	1979	80866	338	Concrete Railway Sleeper	200000 Nos.
69	Sehar Board (Pvt) Ltd. G.T. Road Musa Virk Mian Channu	2665944	Chip / Straw Board	2001	7500	40	Chip Board	1920 Th. Sq. Ft.
70	Afridi Cold Storage Chak No.21/8-R Tulamba Road, Mianchannu	2660277	Cold Storage	1990	6000	5	Vegetable/ Fruits	6000 Bags
71	Afzal Cold Storage G.T.Road Mianchannu	2663236	Cold Storage	1973	300	5	Vegetable/ Fruits	3000 Bags
72	Ahmad Cold Storage Chak No.44/15-L Gt Road Mian Channu	2662370	Cold Storage	1992	5700	14	Vegetable/ Fruits	8500 Bags
73	Al-Fateh Cold Storage Jindali Road Mianchannu	0300-6896815	Cold Storage	1997	4800	13	Vegetable/ Fruits	8000 Bags
74	Allah Ditta Cold Storage Chak No.130/15-L Faisal Town Mian Channu	2660449	Cold Storage	1990	18500	16	Vegetable/ Fruits	40000 Bags
75	Al-Macca Cold Storage G.T.Road Mianchannu	2663939	Cold Storage	1989	1000	5	Vegetable/ Fruits	30000 Bags
76	Al-Makka Cold Storage Gt Road Mian Channu	2663939	Cold Storage	1981	6500	6	Vegetable/ Fruits	12000 Bags

Sr. No.	Name / Address of unit	Phone No. / Website	Industry	Estb. Year	Investment (Th.Rs.)	Emp	Product	Annual Installed Capacity
77	Al-Sheikh Cold Storage Chak No.14/15-L Gt Road Mian Channu	2661899	Cold Storage	1999	9700	16	Vegetable/ Fruits	8000 Bags
78	Awais Cold Storage Gt Road Mian Channu	2663199, 2661186	Cold Storage	1997	6800	8	Vegetable/ Fruits	16000 Bags
79	Bajwa Cold Storage Gara More	2670066	Cold Storage	2000	3500	5	Vegetable/ Fruits	7000 Bags
80	Batala Cold Storage G.T.Road Mian Channu	2661375	Cold Storage	1979	1200	5	Vegetable/ Fruits	30000 Bags
81	Bhatti Cold Storage G.T. Road Mian Channu		Cold Storage	1982	1000	5	Vegetable/ Fruits	30000 Bags
82	Chaudhry Cold Storage Bye-Pass Road Mian Channu	0300-6891671	Cold Storage	2001	4550	16	Vegetable/ Fruits	8500 Bags
83	Cheema Cold Storage Bye Pass Mianchannu	2660999	Cold Storage	2001	7200	9	Vegetable/ Fruits	10000 Bags
84	Cheema Cold Storage Rahim Shah Road Jahania		Cold Storage	1978	1000	5	Vegetable/ Fruits	30000 Bags
85	Faiz Bajwa Cold Storage Chak No.92/10-R Chak Shahana Road	2670066	Cold Storage	1993	5500	5	Vegetable/ Fruits	8000 Bags
86	Fakhar Cold Storage Chak No.44/15-L Mian Channu	2660578, 03006890589	Cold Storage	2002	13000	15	Vegetable/ Fruits	12000 Bags

Sr. No.	Name / Address of unit	Phone No. / Website	Industry	Estb. Year	Investment (Th.Rs.)	Emp	Product	Annual Installed Capacity
87	Ghousia Cold Storage Awan Chowk Jahania By Pass	2253087	Cold Storage	1984	11500	19	Vegetable/ Fruits	18000 Bags
88	Ghulam Nabi Cold Storage By Pass Mianchannu		Cold Storage	1920	4000	5	Vegetable/ Fruits	12000 Bags
89	Gill Cold Storage Chak No.44/15-L Gt Road Mian Channu	2661343	Cold Storage	1990	6500	5	Vegetable/ Fruits	4000 Bags
90	Gulshan Cold Storage Tulamba Road Mian Channu	2662334, 0300-6890422	Cold Storage	1987	2400	19	Vegetable/ Fruits	6500 Bags
91	Hafiz Cold Storage 5 Km Tulumba Road	2660540	Cold Storage	1998	9781	22	Vegetable/ Fruits	40000 Bags
92	Haneef Cold Storage G.T. Road, Mian Channu	2663236	Cold Storage	1994	700	5	Vegetable/ Fruits	12000 Bags
93	Hanif Cold Storage Gt Road Mian Channu	2660496	Cold Storage	1974	5200	6	Vegetable/ Fruits	10000 Bags
94	Jamal Cold Storage Musawirk Gt Road Mian Channu	2660399	Cold Storage	1987	9100	12	Vegetable/ Fruits	24000 Bags
95	Karmanwala Cold Storage G.T.Road Mianchannu		Cold Storage	1920	5000	5	Vegetable/ Fruits	20000 Bags
96	Kawait Cold Storage Chak No. 30 Mian Channu	2662449	Cold Storage	1998	3500	5	Vegetable/ Fruits	14000 Bags

Sr. No.	Name / Address of unit	Phone No. / Website	Industry	Estb. Year	Investment (Th.Rs.)	Emp	Product	Annual Installed Capacity
97	Madina Cold Storage Gtroad Mianchannu	2663912	Cold Storage	1977	6200	17	Vegetable/ Fruits	18000 Bags
98	Maqsood Cold Storage Old City Mian Channu		Cold Storage	1968	600	5	Vegetable/ Fruits	25000 Bags
99	Mian Channu Cold Storage Bye Pass Road Mian Channu	7895077	Cold Storage	2000	6000	14	Vegetable/ Fruits	13000 Bags
100	Minhas Cold Storage Jandiali Road Mian Channu	2663175	Cold Storage	2004	9000	16	Vegetable/ Fruits	8500 Bags
101	Najaf Cold Storage Chak Shahana Road	2553335	Cold Storage	1970	7000	5	Vegetable/ Fruits	14000 Bags
102	Naveed Cold Storage By Pass Road, Khanewal	2555791	Cold Storage	2001	4000	5	Vegetable/ Fruits	7000 Bags
103	Nayab Cold Storage, G.T. Road Mianchannu	2661488	Cold Storage	1998	4000	5	Vegetable/ Fruits	24000 Bags
104	Rana Usman Cold Storage 15 Pul Gt Road Mian Channu	2665387	Cold Storage	2003	14000	12	Vegetable/ Fruits	24000 Bags
105	Sadat Cold Storage Chak No.130/15-L Mian Channu	0300- 6898195	Cold Storage	1995	10000	15	Vegetable/ Fruits	12000 Bags
106	Sadiq Sons Cold Storage 6 Km Tulamba Road Mian Channu	2004527	Cold Storage	2003	10400	16	Vegetable/ Fruits	28000 Bags

Sr. No.	Name / Address of unit	Phone No. / Website	Industry	Estb. Year	Investment (Th.Rs.)	Emp	Product	Annual Installed Capacity
107	Sharif Ice Factory & Cold Storage Mohsinwal Gt Road Mian Channu	2616025	Cold Storage	1999	9500	20	Vegetable/ Fruits	17000 Bags
108	Sheikh Tariq Oil & Cold Storage Gt Road Mian Channu	2661899	Cold Storage	1987	10500	16	Vegetable/ Fruits, C-Oil	8000 Bags, 3 Expeller
109	Siddique Nayab Cold Storage Chak No.44/15-L Gt Mianchannu	2660540	Cold Storage	1999	6500	11	Vegetable/ Fruits	12500 Bags
110	Talal Cold Storage Gt Road Mianchannu	2661073	Cold Storage	2001	6200	15	Vegetable/ Fruits	6000 Bags
111	Tariq Cold Storage G.T. Road Mian Channu		Cold Storage	1987	560	5	Vegetable/ Fruits	30000 Bags
112	Umair Arshad Cold Storage Multan Road Mian Channu	2660136	Cold Storage	2004	3540	15	Vegetable/ Fruits	12000 Bags
113	United Cold Storage Chak 125/15-L Mian Channu	2660271	Cold Storage	1994	7000	16	Vegetable/ Fruits	12000 Bags
114	Usman Noman Adil Cold Storage Gt Road Mian Channu	2661557	Cold Storage	2000	7500	21	Vegetable/ Fruits	30000 Bags
115	Zaheer Cold Storage Bye Pass Road Jahania	2556650	Cold Storage	2000	10500	19	Vegetable/ Fruits	20000 Bags
116	A.A Ginners Multan Road Jahanian	2210499	Cotton Ginning And Pressing	1986	6000	31	Cotton Lint/ Seed	5 Sawgins, 1 Press

Sr. No.	Name / Address of unit	Phone No. / Website	Industry	Estb. Year	Investment (Th.Rs.)	Emp	Product	Annual Installed Capacity
117	Abdullah Cotton Ginning & Pressing Factory Abdul Hakeem Kabirwala	2441001-2	Cotton Ginning And Pressing	1965	3600	28	Cotton Lint/ Seed	4 Sawgins , 1 Press
118	Abu-Ui-Khalil Cotton Industry Pul Bagar Kabirwala	24450251	Cotton Ginning And Pressing	1988	7000	23	Cotton Lint/ Seed	4 Sawgins , 1 Press
119	Afshan Cotton Industries Chak No.126/15-Jandiali Road Mian Channu	2660656, 2664874	Cotton Ginning And Pressing	1987	6200	37	Cotton Lint/ Seed	4 Sawgins , 1 Press
120	Ahmed Brothers (Pvt) Ltd. (Madina C/Ginner) Multan Road Jahania	2210136	Cotton Ginning And Pressing	1985	4400	53	Cotton Lint/ Seed	4 Sawgins , 1 Press
121	Al-Barkat Industries 14/8-Ar Tulumba Road Mian Channu	2660169	Cotton Ginning And Pressing	1978	5300	35	Cotton Lint/ Seed	4 Sawgins , 1 Press
122	Al-Nasir Cotton Ginners Bye Pass Chowk	2553853, 2552553	Cotton Ginning And Pressing	1988	9000	61	Cotton Lint/ Seed	4 Sawgins , 1 Press, 4 Expellers
123	Al-Talib Cotton Industries Ginning Pressing & Oil Mills (Al-Noor Cotton Ginners) Super Highway Road Jahanian	2210329	Cotton Ginning And Pressing	1995	5000	45	Cotton Lint/ Seed	4 Sawgins , 1 Press, 2 Expellers

Sr. No.	Name / Address of unit	Phone No. / Website	Industry	Estb. Year	Investment (Th.Rs.)	Emp	Product	Annual Installed Capacity
124	Anmol Cotton Industries Super Highway Road Jahanian	2212132	Cotton Ginning And Pressing	1984	7500	55	Cotton Lint/ Seed	4 Sawgins , 1 Press, 4 Expellers
125	Arshad Industries Pull Rangu Multan Road	0303-7966982, 0300-8636169	Cotton Ginning And Pressing	1984	9500	45	Cotton Lint/ Seed	4 Sawgins , 1 Press, 4 Expellers
126	Azam Nasir Cotton Ginning & Pressing Factory Islam Kot Kabirwala	2445183, 2015702	Cotton Ginning And Pressing	1996	6500	25	Cotton Lint/ Seed	4 Sawgins , 1 Press
127	Bilal Sadiq Cotton Ginning Factory Bye Pass Mahni Sial Kabirwala	2450295	Cotton Ginning And Pressing	1985	6200	43	Cotton Lint/ Seed	4 Sawgins , 1 Press
128	Chaudhry Cotton Factory & Oil Mills Kahnewala Road Kabirwala	2411230, 2411892	Cotton Ginning And Pressing	1979	15000	46	Cotton Lint/ Seed	12 Sawgins , 3 Press, 6 Expellers
129	Farm Ginnners & Oil Mills Jarahi Road Mian Channu	2660400, 2665700, 2660300	Cotton Ginning And Pressing	1986	5000	32	Cotton Lint/ Seed	6 Sawgins , 1 Press
130	Fazal Traders Cotton Ginners Pirowal	25680330	Cotton Ginning And Pressing	1986	8100	50	Cotton Lint/ Seed	5 Sawgins , 1 Press
131	Fine Cotton Ginners Bukhari Farm Chak Haiderabad Kabirwala	2512144	Cotton Ginning And Pressing	1994	5000	35	Cotton Lint/ Seed	3 Sawgins , 1 Press, 3 Expellers

Sr. No.	Name / Address of unit	Phone No. / Website	Industry	Estb. Year	Investment (Th.Rs.)	Emp	Product	Annual Installed Capacity
132	Fine Cotton Industries Chak Ahadiwala Kabirwala	2557051-2	Cotton Ginning And Pressing	1985	7000	C	Cotton Lint/ Seed	4 Sawgins , 1 Press
133	Gm Industries Multan Road Jahanian	2211665	Cotton Ginning And Pressing	1970	5000	61	Cotton Lint/ Seed	4 Sawgins , 1 Press
134	Habeeb Cotton Ginning & Pressing Factory Jahanian	2210744	Cotton Ginning And Pressing	1947	3000	28	Cotton Lint/ Seed	4 Sawgins, 1 Press
135	Habib Cotton Factory Makhdoompur Road Kabirwala	2650500	Cotton Ginning And Pressing	1983	4000	36	Cotton Lint/ Seed	4 Sawgins , 1 Press
136	Habib Cotton Industries & Oil Mills 135/16-L Mohsinwal Mian Channu	2616064-5	Cotton Ginning And Pressing	1986	8060	47	Cotton Lint/ Seed	5 Sawgins, 1 Press, 4 Expellers
137	Hassan Industries Cotton Ginning P0Ressing & Oil Mills Jahanian Road	2553116, 0301-7813946	Cotton Ginning And Pressing	1988	9000	57	Cotton Lint/ Seed	5 Sawgins, 1 Press, 4 Expellers
138	Hayat Cotton & Oil Mills (Pvt) Ltd Sardarpur Road Kabirwala	2410482	Cotton Ginning And Pressing	1986	5500	41	Cotton Lint/ Seed	4 Sawgins , 1 Press, 3 Expellers
139	Hiraj Cotton Factory Kabirwala Road Makhdumpur	2650222, 2650333	Cotton Ginning And Pressing	1991	6000	80	Cotton Lint/ Seed	5 Sawgins , 1 Press, 4 Expellers

Sr. No.	Name / Address of unit	Phone No. / Website	Industry	Estb. Year	Investment (Th.Rs.)	Emp	Product	Annual Installed Capacity
140	Iqbal Industries Cotton Ginning Pressing Factory & Oil Mills Kabirwala	2411240-2	Cotton Ginning And Pressing	1986	10746	109	Cotton Lint/ Seed	9 Sawgins , 2 Press, 4 Expellers
141	Irfan Cotton Industries Chak No.121/15-L Jandiali Road Mian Channu	2004060, 2665859	Cotton Ginning And Pressing	1986	46900	21	Cotton Lint/ Seed	4 Sawgins , 1 Press
142	Ittefaq Cotton Industries Super Highway Road Jahania	2210283	Cotton Ginning And Pressing	1981	6000	32	Cotton Lint/ Seed	8 Sawgins , 1 Press
143	Jamal Cotton Industries Gt Road Mian Channu	2661186, 2663199	Cotton Ginning And Pressing	1986	8700	33	Cotton Lint/ Seed	4 Sawgins , 1 Press
144	Jami Cotton Industries Chak 105/10-R Super Highway Road Jahanian	2211327	Cotton Ginning And Pressing	1980	7200	15	Cotton Lint/ Seed	4 Sawgins , 1 Press
145	Janat Industries Cotton Ginning, Oil & Rice Mills, Near Pull Bagar, Kabirwala	2445154, 2415100	Cotton Ginning And Pressing	2005	5500	20	Cotton Lint/ Seed	4 Sawgins , 1 Press, 3 Expellers
146	Karmanwaley (Pvt) Ltd C.G.P.And Oil Mills G.T.Road Mian Channu	2662597, 2665547, 2661557, 2660547	Cotton Ginning And Pressing	1991	3000	18	Cotton Lint/ Seed	3 Sawgins , 1 Press

Sr. No.	Name / Address of unit	Phone No. / Website	Industry	Estb. Year	Investment (Th.Rs.)	Emp	Product	Annual Installed Capacity
147	Kashmir Cotton Factory Rahim Shah Road Jahanian	2210806, 2210907	Cotton Ginning And Pressing	1947	4700	47	Cotton Lint/ Seed	5 Sawgins , 1 Press
148	Khan Industries Cotton Ginning & Pressing Factory 3 Km Vehari Road	2610154	Cotton Ginning And Pressing	1981	4000	28	Cotton Lint/ Seed	3 Sawgins , 1 Press
149	Khizer Industries (Friends Cotton) Jahania	2210977	Cotton Ginning And Pressing	1995	8000	26	Cotton Lint/ Seed	5 Sawgins , 1 Press
150	Mahmood Cotton Industries Tulumba Road Mian Channu	2660307	Cotton Ginning And Pressing	1998	3200	42	Cotton Lint/ Seed	4 Sawgins , 1 Press
151	Moon Model Industries 8-Kassi By Pass	2254813, 2255213	Cotton Ginning And Pressing	1991	12500	71	Cotton Lint/ Seed	4 Sawgins , 1 Press, 4 Expellers
152	Mukhtar Cotton Factory, Kabirwala Road	2551603-4	Cotton Ginning And Pressing	2008	12500	35	Cotton Lint/ Seed	4 Sawgins , 1 Press
153	Murtuza Brothers Cotton Ginning & Pressing Factory Chak 105/15-L Wanjari	2614177	Cotton Ginning And Pressing	1991	2844	34	Cotton Lint/ Seed	4 Sawgins , 1 Press
154	Nasco Industries, Chak 112/10-R Multan Road Jahanian	2212100-1, 2210516	Cotton Ginning And Pressing	2003	6500	43	Cotton Lint/ Seed	4 Sawgins , 1 Press

Sr. No.	Name / Address of unit	Phone No. / Website	Industry	Estb. Year	Investment (Th.Rs.)	Emp	Product	Annual Installed Capacity
155	Nishat Cotton Factory Sham Kot Road	2551137	Cotton Ginning And Pressing	1985	6500	44	Cotton Lint/ Seed	4 Sawgins , 1 Press, 5 Expellers
156	Noor Hayat Cotton Factory Kukkar Hyatta Road Salar Wahan Kabirwala	2522267	Cotton Ginning And Pressing	1995	7500	26	Cotton Lint/ Seed	4 Sawgins , 1 Press
157	Prime Cotton Industries Chak Shahana Road	25670134, 2670234	Cotton Ginning And Pressing	1990	8500	40	Cotton Lint/ Seed	4 Sawgins , 1 Press, 4 Expellers
158	Qureshi Cotton Ginning & Pressing Factory Bye Pass Iqbal Nagar Mian Channu	2420022	Cotton Ginning And Pressing	1972	4100	36	Cotton Lint/ Seed	4 Sawgins , 1 Press
159	Rabbania Cotton Ginning & Pressing Fty Sirai Sidhu Road Bagar Sargana Kabirwala	2420265	Cotton Ginning And Pressing	1980	9000	37	Cotton Lint/ Seed	4 Sawgins , 1 Press, 2 Expellers
160	Rafi Cotton Factory Pull Rangoo Kabirwala	2578399	Cotton Ginning And Pressing	1991	11500	66	Cotton Lint/ Seed	6 Sawgins , 1 Press, 8 Expellers
161	Rehmat Industries Cotton & Oil Mills 5 Kassi Multan Road Kabirwala	2450150-1	Cotton Ginning And Pressing	1990	1200	30	Cotton Lint/ Seed	4 Sawgins , 1 Press, 4 Expellers
162	Roberts Cotton Associates Ltd	255628-9	Cotton Ginning And Pressing	1948	4305	89	Cotton Lint/ Seed	5 Sawgins , 5 Press

Sr. No.	Name / Address of unit	Phone No. / Website	Industry	Estb. Year	Investment (Th.Rs.)	Emp	Product	Annual Installed Capacity
163	Saba Cotton Industries 6-Kassi Kabirwala	2450112	Cotton Ginning And Pressing	1990	6500	42	Cotton Lint/ Seed	5 Sawgins , 1 Press
164	Sajjid Cotton Ginning & Oil Mills 72/10-R Shanti Nagar	2007889	Cotton Ginning And Pressing	1975	23000	10	Cotton Lint/ Seed	4 Sawgins , 1 Press, 5 Expellers
165	Saleem Afzal Industries (Pvt) Ltd Khanewal Road Kabirwala	25411330-32	Cotton Ginning And Pressing	1992	5998	42	Cotton Lint/ Seed	4 Sawgins , 1 Press, 4 Expellers
166	Shan Cotton Factory Super Highway Road Jahanian	2210818-24	Cotton Ginning And Pressing	1986	9300	44	Cotton Lint/ Seed	5 Sawgins, 1 Press
167	Sharif Cotton Industries & Pressing Factory Multan Road, Mian Channu	2662336, 2660336, 2665436	Cotton Ginning And Pressing	1990	8000	26	Cotton Lint/ Seed	4 Sawgins , 1 Press
168	Sheikh Industries Cotton Ginning And Pressing Factory Tulamba Road Mian Channu	2660540, 2664841	Cotton Ginning And Pressing	1986	4700	58	Cotton Lint/ Seed	4 Sawgins , 1 Press
169	Sheikh Muhammad Ismail & Co.(Pvt) Ltd. Station Sham Kot Teh. Kabirwala		Cotton Ginning And Pressing	1942	2000	C	Cotton Lint/ Seed	4 Sawgins , 1 Press
170	Sms Cotton Factory Ginning & Pressing Monga Road Kabirwala	2582103	Cotton Ginning And Pressing	1982	6500	20	Cotton Lint/ Seed	3 Sawgins, 1 Press

Sr. No.	Name / Address of unit	Phone No. / Website	Industry	Estb. Year	Investment (Th.Rs.)	Emp	Product	Annual Installed Capacity
171	Sohail Aamir Industries (Pvt) Ltd Kabirwala Road	2411103	Cotton Ginning And Pressing	1991	12500	66	Cotton Lint/ Seed	8 Sawgins , 1 Press
172	Tufail & Co. Cotton Ginners Jahania Bye Pass Road Meher Shah	2553646	Cotton Ginning And Pressing	1985	7500	48	Cotton Lint/ Seed	4 Sawgins , 1 Press
173	Yousaf Cotton Factory Gt Road Mian Channu	2663213	Cotton Ginning And Pressing	2004	8000	21	Cotton Lint/ Seed	3 Sawgins , 1 Press
174	Zafar Brothers Cotton Ginning & Pressing Factory Mouza Allahabad Khanewal Road Kabirwala	2411243	Cotton Ginning And Pressing	2005	7500	51	Cotton Lint/ Seed	4 Sawgins , 1 Press, 4 Expellers
175	Zahid Sadiq Cotton Industries 6 Km Tulumba Road Mian Channu	2020027, 2004027, 2661327, 2661227	Cotton Ginning And Pressing	1988	8000	48	Cotton Lint/ Seed	5 Sawgins , 1 Press
176	Nestle Milk Pak Ltd Kabirwala	2411433-6	Dairy Products	1996	775000	95	Milk Powder, Noodles	15000 M.Tons, 3000 M.Tons
177	Abdul Hakeem Flour Mills Multan Road Abdul Hakeem	652441	Flour Mills	2003	4500	12	Flour	60 M.Tons/ Day
178	Ahmad Flour & General Mills Ltd Kabirwala Rd	2553716	Flour Mills	1982	13500	20	Flour	160 M.Tons/ Day
179	Al-Assar Flour Mills Bye Pass Jahania Road	2007371	Flour Mills	2005	4500	12	Flour	60 M.Tons/ Day

Sr. No.	Name / Address of unit	Phone No. / Website	Industry	Estb. Year	Investment (Th.Rs.)	Emp	Product	Annual Installed Capacity
180	Al-Madina Flour Mills, Mukhdoompur Road Kabirwala	2411068	Flour Mills	2002	6000	12	Flour	120 M.Tons/Day
181	Al-Mashhad Flour Mills Rahim Shah Road Jahania	211986	Flour Mills	1996	5200	12	Flour	120 M.Tons/Day
182	Channu Flour Mills Tulamba Road Mian Channu	2665014, 2663956, 2660114	Flour Mills	1983	1982	32	Flour	120 M.Tons/Day
183	Gulshan Iqbal Flour Mills Kabirwala	2411242, 2400222	Flour Mills	2005	18000	5	Flour	160 M.Tons/Day
184	Gunj-E-Shakar Flour Mills (Pvt) Ltd Gt Road Mian Channu	2005011, 0405-420227, 420027	Flour Mills	1978	15000	7	Flour	120 M.Tons/Day
185	Hashmi Flour Mills, Pakka Haji Majeed, Tulamba Road, Mian Channu	2028333	Flour Mills	2008	15000	15	Flour	60 M.Tons/Day
186	Iqbal Flour Mills 2-A Islam Park	2551794	Flour Mills	1967	10000	20	Flour	100 M.Tons/Day
187	Ittifaq Roller Flour Mills Super High Way Road Jahania	2212235	Flour Mills	1996	8000	16	Flour	100 M.Tons/Day
188	Kabir Flour Mills Khanewal Road Kabirwala	0304-6331321	Flour Mills	1982	4700	17	Flour	40 M.Tons/Day
189	Maik Flour Mills, Khanewal Road, Jahanian	2212384, 2212386	Flour Mills	2007	25000	20	Flour	240 M.Tons/Day

Sr. No.	Name / Address of unit	Phone No. / Website	Industry	Estb. Year	Investment (Th.Rs.)	Emp	Product	Annual Installed Capacity
190	Maryam Flour Mills, Sie, Mian Channu	2016216, 2019890	Flour Mills	2006	32500	25	Flour	160 M.Tons/Day
191	Masood Flour Mills Jahanian Bye Pass Road	2555751	Flour Mills	1990	7500	25	Flour	60 M.Tons/Day
192	Murshad Flour & General Mills 70 Sie	065-2007889	Flour Mills	2005	101000	5	Flour	160 M.Tons/Day
193	Neymat Flour Mills, Multan Road, Jahanian	2211422	Flour Mills	2007	22500	15	Flour	80 M.Tons/Day
194	Nishat Flour Mills Sham Kot Road	2551136	Flour Mills	2004	15000	30	Flour	160 M.Tons/Day
195	Peer Kabir Flour Mills Multan Road Kabirwala	2411517	Flour Mills	1999	8000	18	Flour	60 M.Tons/Day
196	Ramzan Flour Mills Gt Road Musa Virk Mian Channu	2663844	Flour Mills	1993	5000	13	Flour	60 M.Tons/Day
197	Rehmat Flour Mills 5 Kassi Kabirwala	2450152, 2450566	Flour Mills	2005	20000	5	Flour	160 M.Tons/Day
198	Sb Beverages 14/A Sie Mian Channu	2004235, 03006951953	Fruit Juices	2004	2300	9	Fruit Juices	50000 Crates
199	Sfa Industries (Pvt) Ltd., 5-Kassi Multan Road, Kabirwala	2450367, 2450567, Www.Sfa.Com.Pk	Fruit Juices	2008	50000	75	Fruit Juices	30000 Crates
200	Ahsan Chicks, 7-Km Jahanian Road	0301-8741416	Hatchery	2006	20000	7	Chicks	1060 Th.Nos.
201	Jadeed Hatchery, 6 Km Khanewal Road, Kabirwala	2553030	Hatchery	1993	87926	111	Chicks	25200 Th.Nos.

Sr. No.	Name / Address of unit	Phone No. / Website	Industry	Estb. Year	Investment (Th.Rs.)	Emp	Product	Annual Installed Capacity
202	K&N'S Poultry Farms Chak 84/10-R Lahore Multan Road	0303-7972131	Hatchery	2000	5540	36	Chicks	6120 Th.Nos.
203	Sabir Poultries, Kukar Hatta Road, Pull Rango, Kabirwala	0300-8443908	Hatchery	2008	20000	9	Chicks	1140 Th.Nos.
204	Sadar Mechanical Workshop & Oil Mills Gt Road Mian Channu	2660815	Industrial Machinery	1998	6000	21	Flour Mill Machinery	300 Nos, 3 Expellers
205	Madina Packages Chak No. 113/10-R, Jahania	2210908	Packages	1993	700	6	Packing Material	1200 M.Tons
206	Awais Usama Paper Mills Musa Virk Miana Channu	2660299, 2663299	Paper And Paper Board	2004	7000	10	Floating Paper	10 M.Tons
207	Decent Paper Mills (Pvt) Ltd Kabirwala Road	2556562, 25512506	Paper And Paper Board	1990	9400	30	Floating Paper	3600 M.Tons
208	Naveed Jamal Papers (Pvt) Ltd., Gt Road, Mian Channu	2663959	Paper And Paper Board	1998	1000	20	Floating Paper	3800 M.Tons
209	Habib Plastic Industries By Pass Jahania Road	2552840	Plastic Products	1997	1000	5	Plastic Products	250 M.Tons
210	Imran Plastic Industries Near F.F. Industries Khanewal Road, Kabirwala		Plastic Products	1993	400	5	Plastic Products	200 Th.Rs.

Sr. No.	Name / Address of unit	Phone No. / Website	Industry	Estb. Year	Investment (Th.Rs.)	Emp	Product	Annual Installed Capacity
211	Kabir Poly Textile Mills Ltd. 3-Kassi Kabirwala	2450070-4	Poly Propylene Bags	1992	69291	5	Poly Propylene Bags	600 M.Tons
212	Multan Feeds, Multan Road	061-4026391, 6009698	Poultry Feed	2006	15000	80	Poultry Feed	80000 M.Tons
213	Fauji Kabirwala Power Co Chopar Hatta Kabirwala	2410113	Power Generation	1994	1788950	85	Electricity	157 Mw
214	Roush Pakistan Power Ltd. Abdul Hakim	065-2441572, Www.Roushchpak.Com	Power Generation	1995	27450	342	Electricity	450 Mw
215	Umair Plastic Yam Industries G.T. Road Mianchannun		Pvc Yarn	1986	2200	6	Pvc Yarn	450 M.Tons
216	Ali Zaib Rice Traders, Adda Blouch Town, Tulamba, Mian Channu	2005587	Rice Mills	2005	1000	30	Rice	3 Hullers
217	Amaan Rice Mills, Kacha Khu Road, Abdul Hakeem	0300-8735804	Rice Mills	2006	10000	12	Rice	4 Hullers
218	Bhatti Rice Mills Qatalpur Road Kabirwala	2440240	Rice Mills	2001	1100	15	Rice	3 Hullers
219	Bismillah Rice Mills, Chak No.10/8-Ar, Tulamba Road, Mian Channu	2005865	Rice Mills	2005	8000	20	Rice	4 Hullers
220	Gm Rice Mills, Jail Road, Musawirk, Mian Channu	2664566	Rice Mills	2008	30000	15	Rice	3 Hullers

Sr. No.	Name / Address of unit	Phone No. / Website	Industry	Estb. Year	Investment (Th.Rs.)	Emp	Product	Annual Installed Capacity
221	Gulshan-E-Iqbal Rice Mills, Khanewal Rd, Kabirwala	2411242, 2400222	Rice Mills	2008	3000	15	Rice	4 Hullers
222	Haji Munir Rice Mills Tulumba Road Abdul Hakim	2441744	Rice Mills	2003	1500	5	Rice	2 Shellers
223	Hamza Traders Near Pull Shar E Madina Multan Road Abdul Hakeem	2241430-31, 03006899298	Rice Mills	1996	2700	C	Rice	1 Sheller
224	Itihad Rice Mills, Chak No.133/16-L, Multan Road, Mian Channu	2660594	Rice Mills	2005	5000	15	Rice	3 Hullers
225	Ittefaq Rice Factory SIE Musawirk Mian Channu	300-4118312, 2664566, 2004657	Rice Mills	2003	11000	22	Rice	3 Hullers
226	Janat Industries, Cotton Ginning, Oil & Rice Mills, Near Pull Bagar, Kabirwala	2445154, 2415100	Rice Mills	2008	7000	12	Rice	5 Hullers
227	Madina Rice Factory Near Pull Bagar Road Kabirwala	2000175	Rice Mills	2002	10000	11	Rice	4 Hullers
228	Mian Channu Rice Mills 133/16-L Mian Channu	2660594-5	Rice Mills	2002	4500	5	Rice	3 Hullers
229	Moon Traders Rice Mills Tulumba Road Abdul Hakeem	241205, 241505	Rice Mills	1985	20000	47	Rice	5 Sheller

Sr. No.	Name / Address of unit	Phone No. / Website	Industry	Estb. Year	Investment (Th.Rs.)	Emp	Product	Annual Installed Capacity
230	Murshad Rice Mills Makihdoompur Pohran	7815400	Rice Mills	2005	5000	9	Rice	4 Hullers
231	National Rice Mills, 10-Km Multan Road, Mian Channu	2616250	Rice Mills	2006	12500	15	Rice	3 Hullers
232	Ravi Rice Mills, 14-Pul Jhang Road, Kabirwla	2461161	Rice Mills	2000	12500	15	Rice	3 Hullers
233	Rehmat Industries Rice Mills, 5-Kassi Multan Road, Kabirwala	2450150-51	Rice Mills	2008	35000	30	Rice	5 Hullers
234	Shahid Rice Mills Pull 15/L Gt Road Mian Channu	2664807, 2661606	Rice Mills	2003	1500	14	Rice	2 Hullers
235	Sultan Rice Mills Near Sabzi Mandi Multan Road Kabirwala	2000608, 2000605	Rice Mills	2004	5000	17	Rice	1 Huller
236	Data Agro Industries (Pvt) Ltd Kabirwala Road	2551190-1	Seed Processing	1992	105662	30	Seed Processing	20000 M.Tons
237	Punjab Seed Corporation 81-82/10-R Pirawal	2680062, 2680151	Seed Processing	1976	23570	125	Seed Processing	30000 M.Tons
238	Robert Cotton Associates Opposite Block No. 1	2553651, 2555629	Seed Processing	1996	2000	9	Seed Processing	6000 M.Tons
239	Star Pre-Casting Factory Plot 3-B/5, Indl. Estate Musa Virk, Mianchannu		Sizing Of Yarn	1995	1400	12	Sizing Of Yarn	750 M.Tons

Sr. No.	Name / Address of unit	Phone No. / Website	Industry	Estb. Year	Investment (Th.Rs.)	Emp	Product	Annual Installed Capacity
240	Zasha Ltd. Chak No. 19/8-R Hydrabad Tulamba Road Mianchannu	065- 2005434, 030041092 69	Solvent Oil Extraction	1997	3500	C	Solvant Oil Extraction	12000 M.Tons
241	Colony-ii Sugar Mills Ltd. Chak No.84/15-L Kacha Khu Vehari Road, Mian Channu	2553182, 2660452	Sugar	1995	310847	505	Sugar	3000 Tcd
242	Liaqu Textile Mills 4 Km Multan Road Abdul Hakeem Kabirwala	2441134, Www.Liaqu .Com	Textile Madeups	2005	9000	C	Textile Made Ups	26 Machines
243	Abdullah Textile Mills (Pvt) Ltd Vehari Road Mian Channu	7775355- 57, 021- 2775358	Textile Spinning	1991	65164	317	Cotton Yarn	7708 Spindles, 1600 Rotors
244	Al Makkah Fibers Chak 113/10-R Jahanian	2212113-5	Textile Spinning	2004	32000	52	Cotton Yarn	1400 Rotors
245	Hussain Textiles (Pvt) Ltd Khanewal Bye Pass Multan Road Kabirwala	2650620, 2450621, Www.Huss aingroup.C om	Textile Spinning	2005	12500	60	Cotton Yarn	20640 Spindles
246	Jahania Fibers (Pvt) Ltd. Chak No. 113/10-R Bodhla Road Jahana	2210015-6	Textile Spinning	1995	15000	C	Cotton Yarn	800 Rotors
247	Jamhoor Textile Mills Ltd Monnoo Garh Gt Road Mian Channu	2660577, 2663577, Www.Mono ogroup.Co m	Textile Spinning	1980	36604	881	Cotton Yarn	24960 Spindles

Sr. No.	Name / Address of unit	Phone No. / Website	Industry	Estb. Year	Investment (Th.Rs.)	Emp	Product	Annual Installed Capacity
248	Masood Spinning Mills (Pvt) Ltd Multan Road Kabirwala	2411508	Textile Spinning	2000	248869	450	Cotton Yarn	22032 Spindles
249	Monnoowal Textile Mills Ltd. Gt Road Mianchannu	2660634-5, 2664633	Textile Spinning	1989	633690	893	Cotton Yarn	20160 Spindles
250	Qasur Textile Mills (Pvt) Ltd Gt Road Mohsinwal	2616061-5	Textile Spinning	1995		C		
251	Qureshi Textile Mills Ltd Chak No. 144/15-L Gt Road Mian Channu	2660933	Textile Spinning	1975	90556	443	Cotton Yarn	15736 Spindles
252	Rehman Fibers Chak 113/10-R Opp Railway Station Jahanian	2211908	Textile Spinning	2003	9600	41	Cotton Yarn	600 Rotors
253	Spin Tax Spinning Mills Mianchannu	2663203	Textile Spinning	1992	95000	160	Cotton Yarn	15000 Spindles
254	Uswah Woollen Industries Multan Road Mian Channu	2662606, 2660965	Textile Spinning	1994	6000	30	Cotton Yarn	288 Spindles
255	Masood Fabrics (Pvt) Ltd Multan Road Kabirwala	2411501-2, www.Mah moodgroup .Com	Textile Weaving	1998	360219	402	Cotton Cloth	112 Looms
256	New Trend Fabrics Chak No. 84/15-L Vehari Road Main Channu		Textile Weaving	1998	12000	C	Cotton/ Polyester Cloth	100 Looms

Sr. No.	Name / Address of unit	Phone No. / Website	Industry	Estb. Year	Investment (Th.Rs.)	Emp	Product	Annual Installed Capacity
257	Qasur Textile Mills (Pvt) Ltd G.T.Road Mian Channu	2616061-5	Textile Weaving	1993	2185	60	Grey Cloth	148 Looms
258	Sharif Fabrics (Pvt) Ltd. 1 Km. Multan Road Mian Channu	2660336, 2660536, 2665436, 2664936	Textile Weaving	1992	7000	100	Grey Cloth	130 Looms
259	Azmat Industries (Pvt) Ltd. Khanewal Road Kabirwala		Vegetable Ghee And Cooking Oil	1983	60000	C	Vegetable Ghee / Cooking Oil	12000 M.Tons
260	Effe Industries Limited Allahabad Khanewal Road Basti Allaabad Kabirwala	2410254	Vegetable Ghee And Cooking Oil	1981	241685	C	Vegetable Ghee / Cooking Oil	60000 M.Tons, 7200 M.Tons
261	Faisal Cables Chak 20/8-Br Near Dulluan Wala Bungalow Mian Channu	0300-6898238	Wire & Cable	2004	1100	5	Wire & Cables	800 M.Tons
262	Kabir Poly Textile Mills Ltd; 3 Kassi, Kabirwala	061-458558, 0346-6210557	Woollen Textile Spinning /Weaving	1995	5000	45	Mm Yarn	300 M.Tons
263	Uswah Woollen Mills (Pvt) Ltd. Multan Road, Mian Channu	2662641, 2660965	Woollen Textile Spinning /Weaving	1994	5500	24	Woollen Yarn	720 Spindles

Source: Directorate of Industries, Punjab

LIST OF CONTACT NUMBERS

Directorate of Industries Punjab

Director Industries, Punjab	Tel: +92 (42)-99211520-1 Fax: +92 (42)-99211522 dipunjab@gmail.com
Additional Director Industries	Tel: +92 (42)-99211531 +92 (42)-99212752 Fax: +92 (42)-99212753
Joint Director (Development)	Tel: +92 (42)-99211526
Senior Economist	Tel: +92 (42)-99211533
Staff Economist	Tel: +92 (42)-99211534
Deputy Director (Admin)	Tel: +92 (42)-99211528
Deputy Director (Development)	Tel: +92 (42)-99211528
Deputy Director (Planning)	Tel: +92 (42)-99211530
Assistant Director (Admin)	Tel: +92 (42)-99211529
Assistant Director (Planning)	Tel: +92 (42)-99211530
Assistant Director (Statistics)	Tel: +92 (42)-99211524
Assistant Registrar	Tel: +92 (42)-99211523
Librarian	Tel: +92 (42)-99213010
District Officer (E&IP), Khanewal	Tel: +92 (65)-9200219

Other Relevant Departments

Department	Contact
Secretary, Industries, Commerce & Investment Department, Govt. of the Punjab	Tel: +92 (42) 99210534-5 Fax: +92 (42) 99210536
Chamber of Commerce & Industry Khanewal	Tel: +92 (65) 2553031 khanewalcci@gmail.com
Punjab Board of Investment & Trade (PBIT)	Tel: +92 (42) 99205201 info@pbit.gov.pk
Small & Medium Enterprises Development Authority (SMEDA)	Tel: +92(42)-111-111-456 Fax: +92 (42) 36304926-7 info@smeda.org.pk

Punjab Industrial Estates Development and Management Company (PIEDMC)	Tel: +92 (42) 35297203-6 Fax: +92 (42) 35297207 info@pie.com.pk
Punjab Small Industries Corporation (PSIC)	Tel: +92 (42) 99200453

BIBLIOGRAPHY

- Punjab Development Statistics 2011, Bureau of Statistics, Government of the Punjab
- The Urban Unit, Planning & Development Department, Government of the Punjab.
- Technical Education and Vocational Training Authority
- Chief Inspector of Boilers, Directorate of Industries, Punjab
- Directorate of Agriculture, Crop Reporting Service, Punjab
- Chief Conservator of Forest Planning, Monitoring and Evaluation, Punjab
- Directorate General (Ext), Livestock & Dairy Development Punjab
- Directorate General Mines & Minerals, Punjab
- Punjab Small Industries Corporation
- Punjab Industrial Estates Development and Management Company
- Faisalabad Industrial Estates Development and Management Company
- Industries, Commerce & Investment Department, Government of the Punjab
- District Officers (Enterprise & Investment Promotion) as well as District Administration
- Export Processing Zones Authority
- Board of Investment, Government of Pakistan
- Website of Stat Bank of Pakistan
- Ministry of Finance, Govt. of Pakistan
- Directory of Industrial Establishments Punjab, Directorate of Industries, Punjab

