

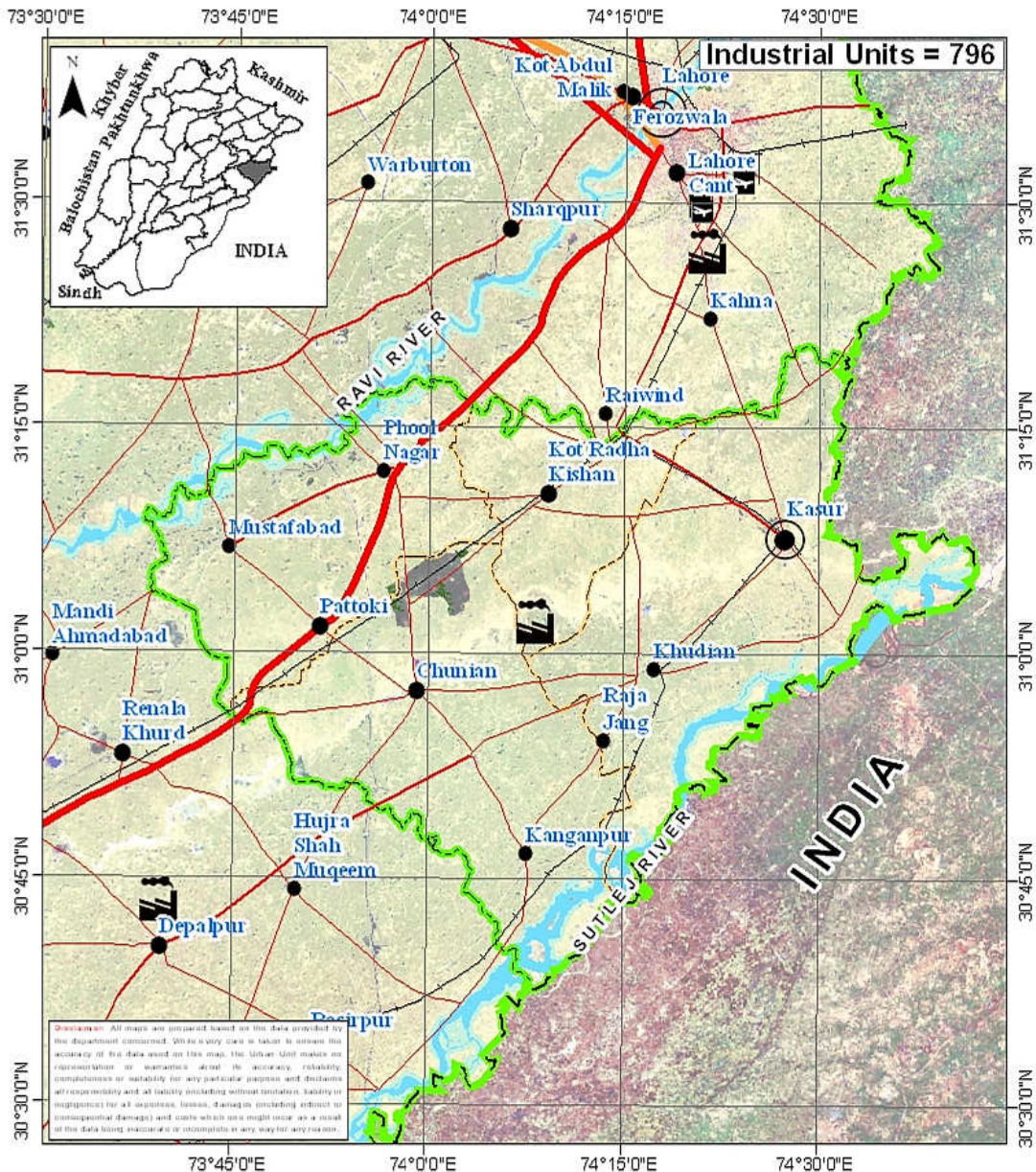
District Pre-Investment Study - 2012

Kasur



Directorate of Industries, Punjab
Poonch House, Multan Road, Lahore.

District Kasur



Director's Message

After spending past two years in Directorate of Industries, Punjab, I feel very privileged to be writing this message as Director Industries, Punjab.



This is the time we publish the 7th edition of the District Pre-Investment Studies of 36 Districts of Punjab, which has now become synonymous with our commitment to helping Industrialists, new entrepreneurs as well as Researchers. As Director Industries Punjab, I have seen much change, like:

- Relocation plan for the industrial units located within residential areas to industrial estates / positive areas declared by the District Governments.
- Adaptation of Boilers & Pressure Vessels Ordinance 2002.
- Conduct of Census of Manufacturing Industries.
- A scheme "Improvement and Up-gradation of Boilers Inspection Wing" has been approved by the Planning & Development Department, Government of the Punjab with the cost of Rs.10 Million.
- A Scheme "Sports Goods and Material Testing Laboratory" is under process in Planning & Development Department, Government of the Punjab. The estimated cost of the scheme is Rs.450 Million.
- The proposal for Capacity Building of Directorate of Industries Punjab is under process in Industries, Commerce & Investment Department, Government of the Punjab with the estimated cost of Rs.109.75 Million.
- We launch our website www.doi.pitb.gov.pk.

Looking ahead, we are focused on accelerating the execution of growth and promote industrial investment in the province. I am incredibly excited about this and truly believe the best of time for industrial investment is yet to come, Insha Allah.

(Muhammad Siddique Sheikh)
Director Industries, Punjab

Preface

Pre-investment studies for the districts in the Punjab were first published by the Directorate of Industries and Mineral Development, Punjab in the year 1979, with the prime objective of providing data which might interest private entrepreneurs and the framers of the Provincial and National Strategies in the industrial sector.

The second, third, fourth, fifth and sixth series of Pre-investment Studies for all districts of Punjab were published in 1983, 1992, 2002, 2006 and 2009 respectively. The present edition is seventh in the series.

This study basically updates the information contained in sixth series of district pre-investment studies. Efforts have been made to provide latest information collected through published sources, offices of the respective Government Departments/Agencies and District Offices of Industries Department. Quality addition of Industrial Policy Framework, recently promulgated Special Economic Zone Act 2012, Strategic Trade Policy Framework (2012-15) and Digital Maps by Urban Unit has improved these studies significantly.

The information has been updated in respect of population, manpower, production of agriculture crops, fruits, vegetables, livestock, forest resources, ores/minerals, infrastructural facilities such as technical/vocational training facilities, communication net-work, sub-soil water quality/effluent disposal

facilities, power/gas supply, tele-communication facilities, industrial estates, dry ports, industrial financing facilities, loaning scheme of PSIC, industrial policy, investment policy, fiscal incentives, Special Economic Zone Act 2012 and Strategic Trade Policy Framework (2012-15) etc. New policy measures regarding declaration of negative and specified positive areas have also been incorporated.

The study also includes information regarding existing industrial pattern, industry wise installed capacities and details regarding existing major industrial units in each district.

Effort has been made to identify various industries considering the availability of raw materials, skilled labour, linkage between industrial units and local/national/international demand. The suggested industries are, however, merely of indicative nature and it is advisable that prospective investors should conduct detailed feasibility report before making final decision for investment.

It is worthwhile to mention that industrial sector in Punjab has grown gradually from 6,223 industrial units in 1975 to 17,857 industrial undertakings in 2010. Sectoral growth has also been registered, resulting in substantial value addition. Value addition chain can be maximized by processing the agricultural industrial waste like rice husk, cotton stock, maize and corn cob. Herbal products is another untapped area. Live Stock, Dairy Development and poultry are fast growing sectors. Processing of food products can fetch handsome dividends. Currently information technology sector is growing by 39% annually in Pakistan. Fashion

industry is also developing rapidly. Similarly, chemical sector has lot to offer by utilizing the available mineral resources as raw material.

Issue of energy shortage can be addressed by dealing with power generation as an industry. Local as well as foreign investors have golden opportunity to set up power generation stations based on coal and other alternate fuels, under the captive power plants policy allowed in the newly promulgated SEZ Act, 2012. Punjab offers very good opportunity to the local as well as foreign investors to set up small, medium and heavy industries in variety of sectors. It has a growing market of over 90 million consumers, abundant manpower / labour force and cheap raw material with reasonably controlled law & order.

The Industries, Commerce & Investment Department has sufficient institutional frame work of attached and autonomous bodies to look after the industrial issues. Directorate of Industries, Small Industries Corporation (PSIC), Board of Investment (PBIT), Punjab Industrial Estates Development and Management Company (PIEDMC), Faisalabad Industrial Estates Development and Management Company (FIEDMC) have blend of professionals from the public as well as private sector. These legal entities are working in close coordination with the Chambers of Commerce and Industries systematically to promote industrialization and trade.

Development schemes regarding establishment of Industrial Resource Centre at the Directorate of Industries, setting up Sports & Material Testing Lab at EPZ, Sambrial and Industrial Safety Institute are under consideration with the Planning and Development

Department. Completion of these schemes will definitely help in promotion of industrialization process with enhanced industrial safety.

I must record my appreciation to Mr. Muhammad Akram Awan, Senior Economist, who effectively planned, coordinated and provided the guidance to his team members for completion of this study. Credit also goes to Mr. Muhammad Jamil Chishty, Staff Economist for his dedicated support rendered in the completion process of this study and Mr. Waseem Haider, Stenographer, for his tireless typing and composition work on computer.

I am grateful to all the District Officers, Enterprise & Investment Promotion who provided the relevant information of their respective districts for incorporating in pre-investment studies. I am also thankful to various Provincial Departments for supplying the required data to the Directorate of Industries. My special thanks are due to Dr. Nasir Javed, Project Director, Urban Unit for the provision of digital maps and the Punjab Printing Press.

Any suggestion for the improvement of the study will be welcomed.

Dec. 31, 2012

(Muhammad Siddique Sheikh)
Director Industries, Punjab

Contents

Section	Page
District at a Glance	1
1. Geographical Conditions	3
1.1 Brief Description of the District	3
1.2 Climate and General Soil Conditions	4
2. Man-Power	5
2.1 Total Population of the District	5
2.2 Man-Power Availability	6
2.3 Traditional Crafts	9
2.4 Geographical Indications	9
3. Natural Resources	11
3.1 Agriculture	11
a) Main Crops	11
b) Main Fruits	12
c) Main Vegetables	12
3.2 Forests	13
a) Location of Forests and Area under Afforestation	13
b) Production of Timber and Fire-wood	14
3.3 Livestock Population	14
a) Animal Population	14
b) Poultry Population	15
c) Availability of Hides/Skins & Slaughter House Wastes	15
d) Production of Wool	15
3.4 Ores and Minerals	16

4. Infrastructural Facilities	17
4.1 Communication Network	17
a) Road Links	17
b) Rail Links	17
4.2 General Quality and Availability of Sub Soil Water	17
4.3 Effluent Disposal Facilities	17
4.4 Power Supply	18
4.5 Natural Gas Availability	18
4.6 Telecommunication Facilities	18
4.7 Social Infrastructural Facilities	18
4.8 Industrial Estates	19
4.9 Dry Port	20
4.10 Industrial Policy	20
4.11 Declaration of Negative Areas	24
4.12 Declaration of Positive Areas	27
4.13 Incentives for Investors to set a unit in EPZs	28
4.14 Pakistan's Investment Policy – Key Features	30
4.15 Industrial Financing Facilities	33
4.16 Salient Features of Loaning Scheme of PSIC	36
4.17 Salient Features of the SEZ Bill 2012	37
4.18 Strategic Trade Policy Framework (2012-2015)	39
5. Existing Pattern of Industrial Development	45
5.1 Description of Existing Industry	45
6. Future Industrial Potential	47
6.1 Agriculture	47
6.2 Livestock	48
6.3 Forest	49
6.4 Industry	49
6.5 Demand Based Industries	50
6.6 List of Identified Projects	50

Annex	Page
Directory of Industrial Establishment	53
List of Contact Nos.	131
Bibliography	133

DISTRICT AT A GLANCE

1	Population (000 Numbers)	:	3,064
2	Area (Square Kilometres)	:	3,995
3	Population Density (per sq. km.)	:	767
4	Tehsils / Towns	:	Kasur, Chunian and Pattoki.
5	Main Crops	:	Sugarcane, Wheat, Rice (cleaned), Cotton and Maize.
6	Main Fruits	:	Citrus, Guava and Mango.
7	Main Vegetables	:	Potato, Onion, Carrot, Cauliflower, Garlic, Ladyfinger, Matter Green, Turnip and Bottle Gourd.
8	Forest Resources (Area in Acres)	:	13,782
9	Mineral Resources	:	Nil
10	Total Metalled Roads (KM)	:	1,721.37
11	No. of Grid Stations	:	13
12	No. of Telephone Exchanges	:	50
13	Number of Industrial Units (Large Medium and Some Small Selected Sectors)	:	796
14	Type of Industrial Units	:	A.C/ Refrigerator/ Deep Freezers, Blending of Tea, Batteries, Chip Straw Board,

Cold Storage, Cotton Ginning & Pressing, Chemical, Dairy Products, Drugs & Pharmaceutical, Flour Mills, Fruit Juices, G.I./ M.S. Pipes, Glue, Ice Cream, Jute Textile, Knitted Textile, Leather Products, Motor Cycle / Rickshaw, Paper & Paper Board, Paper Cone, Pencils/ Bal Points, Polyester Yarn, Poultry Feed, Power Generation, Sugar, Tannery, Textile Composite, Textile Made Ups, Textile Processing, Textile Spinning, Textile Weaving (Mill Sector), Tractors, Vegetable Ghee / Cooking Oil and Wire & Cable.

CHAPTER - I

GEOGRAPHICAL CONDITIONS

1.1 BRIEF DESCRIPTION OF THE DISTRICT

District Kasur was formed in 1976 by detaching Kasur and Chunian tehsils from Lahore district. Kasur is situated at a distance of about 55 kilometres towards South of Lahore on the Lahore Ferozepur Road. The district has Indian Territory on the South and East across the river Sutluj, Lahore district on the North, Okara district on South-West and Sheikhupura district on North-West.

District Kasur is spread over an area of 3,995 square kilometres and is sub divided in the three tehsils of :-

- i) Kasur
- ii) Chunian
- iii) Pattoki

Apart from tehsil headquarters, other important towns in the district are Mustafabad, Raja Jhan, Kot Radha Kishan, Khudian, Pattoki, Kanganpur, Phool Nagar, etc.

1.2 CLIMATE AND GENERAL SOIL CONDITIONS

The climate of district Kasur is hot in summer and comparatively cold in winter. May and June are the hottest months, when temperature goes upto 44°C. Water logging and salinity has effected a large area of the district making the underground water brackish.

CHAPTER - II

MAN POWER

2.1 TOTAL POPULATION OF THE DISTRICT

According to Punjab Development Statistics 2011, total population of Kasur district is 3,064 thousand persons out of which 1,604 thousand are males and 1,460 thousand are females. Density of population in the district is 767 persons per square kilometre.

Tehsil wise distribution of Urban and Rural population is given in Table-1

TABLE-1

Town-Wise Distribution of Urban & Rural Population

Town	Population (Thousand Nos.)		
	Urban	Rural	Total
Kasur	472	1027	1499
Chunian	79	664	743
Pattoki	148	674	822
Total	699	2365	3064

Source: Punjab Development Statistics, 2011

2.2 MAN POWER AVAILABILITY

As regards availability of skilled labour, there are 11 technical / commercial / vocational institutions (6 for men and 5 for women) imparting training in various trades e.g. mechanical, electrical, auto-engineering, welding and commerce, Vocational institutions for women impart training in commerce, hand / machine embroidery, Food Preservation, beautician. In all about 2252 trained technicians/ artisans/ workers are turning out every year. The details are given in Table-2.

TABLE - 2

Commercial and Technical Institutions

Sr #	Name & Description of Commercial / Technical Training Institutions	Types of Training Courses Offered	Duration of Course	Average No of Students Enrolled / Session
For Men				
1	Govt. College of Commerce, Near Darbar Baba Kamal Chishty, Kasur	D.Com, B.Com (Degree)	24 Months	709
2	Govt. Institute of Commerce, Chunian Hujra By Pass Road,	D.Com B.Com (Degree)	24 Months	282

	Chunian			
3	Govt. Institute of Commerce, Multan Road, Pattoki	D.Com	24 Months	169
4	Govt. Technical Training Institute, Raiwind Road, Kasur	Ref. & AC, Auto Mechanic, Draftsman (Mech), Electrician, Fitter, Machinist, Radio & TV, Welder	18 to 24 Months	394
5	Govt. Technical Training Centre (DMTC) Hostel Building GTTI Kasur	Welder, Wood Work, Wireman	6 Month	56
6	Govt. Technical Training Centre Kot Radha Kishen, Kasur	Certificate in Computer Application, Electrician, Welder	6 Month	90
For Women				
7	Govt. Vocational Training Institute, Kot Azam, Near Degree Colege, Kasur	Tailoring, Computer Short Courses, Vocational Certificate / Diploma, Beautician, Painting. Fabric	6 to 24 Months	108

		Printing		
8	Govt. Vocational Training Institute, Hujra Road, Chunian	Tailoring, Computer Courses, Vocational Diploma, Beautician	6 to 24 Months	72
9	Govt. Vocational Training Institute, Shadman Colony Lower Multan Road, Near Mobile Tower, Faisal Colony, Pattoki	Beautician, Computer Short Courses, Vocational Certificate / Diploma, Domestic Tailoring Diploma	3 to 24 Months	115
10	Govt. Technical Training Centre Near Al-Magieeal Shoping Centre Phost Nagar	Certificate in Computer Application, Machine Embroidery, Domestic Tailoring, Beautician	6 Month	167
11	Govt. Technical Training Centre, Kot Radha Kishen.	Certificate in Computer Application, Domestic Tailoring, Elementary Food Preservation	6 Month	90

Source: TEVTA

2.3 TRADITIONAL CRAFTS

The traditional crafts of Kasur include weaving of Lungies, Durries, Mooras, Peeras and Shoes inlaid with Tilla.

2.4 GEOGRAPHICAL INDICATIONS

The Project Director (Geographical Indications), Industries, Commerce & Investment Department, Government of the Punjab has identified the following Important Geographical Indications in the district:

- Andrassa (sweet)
- Khaes (Bed Sheet)
- Chamra (Leather)
- Leather Products
- Burfi / Sohan Halwa (Sweet).
- Haldi Farm (Turmeric)
- Flower Farm

CHAPTER - III

NATURAL RESOURCES

3.1 AGRICULTURE

a) Main Crops

Sugarcane, Wheat, Rice (cleaned), Cotton and Maize are the main crops grown in the district. Production of these crops during the period 2008-09 to 2010-11 is given in Table - 3.

TABLE-3

**Production of Main Crops
(2008-09 to 2010-11)**

Crop	Production (Th. M.Tons)		
	2008-09	2009-10	2010-11
Sugarcane	1719.92	1820.4	2008.14
Wheat	577.47	570.01	578.23
Rice (cleared)	179.82	169.38	146.66
Cotton	32.79	32.10	36.05
Maize	131.5	164.4	191.20

Source: Directorate of Agriculture, Crop Reporting Service,
Punjab

Besides, Jawar, Bajra, Moong, Mash, Masoor, Oil Seed such as Rape / Mustard and Sun Flower are also grown in minor quantities in the district.

b) Main Fruits

Citrus, Guava and Mango are main fruits grown in the district. Production of these fruits during the period 2008-09 to 2010-11 is given in Table - 4

TABLE-4

**Production of Main Fruits
(2008-09 to 2010-11)**

Fruit	Production (M.Tons)		
	2008-09	2009-10	2010-11
Citrus	21313	28955	11364
Guava	28871	25941	22525
Mango	4952	4893	4766

Source: Directorate of Agriculture, Crop Reporting Service, Punjab

Besides, Peach, Jaman, Phalsa, Litchi, Banana, Plum, Pomegranate, Pears and Apricot are also grown in minor quantity in the district.

c) Main Vegetables

Potato, Onion, Carrot, Cauliflower, Bottle Gourd, Turnip, Garlic, Ladyfinger and Matter Green are main vegetables grown in the district. Production of these vegetables during the period 2008-09 to 2010-11 is given in Table - 5

TABLE-5

**Production of Main Vegetables
(2008-09 to 2010-11)**

Vegetable	Production (M.Tons)		
	2008-09	2009-10	2010-11
Potato	403101	345500	381338
Onion	21256	20305	2181
Carrot	15602	13325	11944
Cauliflower	6009	5225	6718
Garlic	2379	1568	1829
Ladyfinger	3527	3359	3391
Turnip	3191	2919	2986
Bottle Gourd	3971	2874	2329
Matter Green	1792	1437	2314

Source: Directorate of Agriculture, Crop Reporting Service, Punjab

Besides, Brinjal, Chillies and Tomato are also grown in the district in minor quantities.

3.2 FORESTS

a) Location of Forests and Area under Afforestation

An area of 13,782 Acres is under forests, which is about 1.40% of the total area of the district. There is also linear plantation of 996 kilometres alongside the roads/rails/canals in the district. Trees grown in the area are Kau, Phalai, Kikar and Shisham.

b) Production of Timber and Firewood

The production of Timber and Fire-Wood in the district during the period 2008-09 to 2010-11 is given in Table 6.

TABLE-6

**Production of Timber & Firewood
(2008-09 to 2010-11)**

Year	Production (Cubic Meter)	
	Timber	Firewood
2008-09	3274	2014
2009-10	2159	532
2010-11	806	551

Source: Forestry, Wildlife and Fisheries Department

3.3 LIVESTOCK POPULATION

a) Animal Population

The animal population of the district is given in Table - 7.

TABLE - 7

ANIMAL POPULATION

Animals	Population (Th Heads)
Goats	420
Cattle	472
Sheep	105
Buffaloes	1260

Source: Livestock & Dairy Development Department.

b) Poultry Population

As per Punjab Development Statistics 2011, there are 862 broiler and 45 layer poultry farms in the district having rearing capacity of 30,282 and 301 thousand birds respectively. There are also 64 breeding farms having rearing capacity of 1280 thousands Birds.

c) Availability of Hides / Skins and Slaughter House Wastes

As per Punjab Development Statistics 2011, 98,200 animals were slaughtered in recognized / un-recognized slaughter houses in the district during the year 2009-10, which is a reasonable estimate of the availability of hides and skins in the district.

The availability of slaughter house by - products is estimated as under:-

Blood	35.65 M.Tons
Bones	169.49 M.Tons
Tallow	32.99 M.Tons

d) Production of Wool

The sheep population of 105 thousand heads in the district is expected to yield about 105 M.Tons of coarse wool annually.

3.4 ORES AND MINERALS

There is no major mineral in the district.

CHAPTER - IV

INFRASTRUCTURAL FACILITIES

4.1 COMMUNICATION NETWORK

a) Road Links

The district has a total metalled road-length of 1721.37 Kilometres. The District is linked with Lahore, Okara and Pakpattan districts through metalled road.

b) Rail Links

All the main towns of the district except Mustafabad (Lalliani) and Bhaipheru are connected by rail. The district is linked with Lahore and Pakpattan Districts through railway net-work.

4.2 GENERAL QUALITY AND AVAILABILITY OF SUB-SOIL WATER

The sub soil water, due to water logging and salinity, is generally brackish. However, it can be used for industrial purposes.

4.3 EFFLUENT DISPOSAL FACILITIES

There are 6 Drains in the district, however, effluent can be discharged into nullahs, after pre-

treatment to remove harmful ingredients and with prior written permission from Irrigation and Power Department, Government of the Punjab.

4.4 POWER SUPPLY

There are 13 grid stations in the district ranging in capacity from 66 KV to 220 KV.

4.5 NATURAL GAS AVAILABILITY

At present natural gas is available in District Kasur.

4.6 TELE-COMMUNICATION FACILITIES

There are 50 telephone exchanges operating in the district, ranging in capacities from 48 lines to 5,734 lines. Cellular phone services are available in the district.

4.7 SOCIAL INFRA-STRUCTURAL FACILITIES

Social infra-structural facilities available in the district are given in Table - 8.

TABLE - 8

SOCIAL INFRA-STRUCTURAL FACILITIES

Tehsil	Primary / Middle / high / higher secondary School	College	Hospital	Police station	Railway stations	Post office	Banks
Chunian	494	2	1	4	1	20	16
Kasur	788	6	4	8	3	94	32
Pattoki	355	4	1	16	2	42	19
Total	1637	12	6	28	6	156	67

Source: Punjab Development Statistics 2011 / Respective District Offices.

4.8 INDUSTRIAL ESTATE

There is a Small Industrial Estate in the district. The detail regarding the size and number of plots already, allotted and those available for allotment is given in Table-9.

TABLE - 9

SIZES AND AVAILABILITY OF PLOTS IN THE INDUSTRIAL ESTATE

Name of Industrial Estate	Size of Plots (Acres)	Total No. of Plots	Allotted Plots	Vacant Plots
Small Industrial Estate, Kasur.	2 Kanal	87	87	Nil
	1 Kanal	156	156	Nil
	10 Marla	62	62	Nil
	7 Marla	21	21	Nil

Source: Punjab Small Industries Corporation

4.9 DRY PORT

There is no dry port in the district.

4.10 INDUSTRIAL POLICY

- Foreign investors are permitted to hold 100% of the equity of industrial projects without any permission of the Government.
 - No prior Government sanction is required for establishment of an industry outside Ex-Municipal Territorial Limits of Town Committees / Municipal Corporation irrespective of its cost and size except the following covered under schedule 'C':-
 - a. Arms & Ammunition.
 - b. Security Printing Currency & Mint.
 - c. High Explosives.
 - d. Radio Active Substances.
 - e. Alcoholic Beverages or Liquors.
1. No industrial unit mentioned in Schedule-A of the notification No. AEA-III-4-3-9/91, dated 30.09.2002 or industrial unit exceeding a total cost of Rs. 100.00 million shall be set up within 10 miles (16 Kms) of international border:

List of Manufacturing Industries

- a) Basic Metal Industry.

- b) Petro-Chemical Industries (Excluding Products Industries).
 - c) Large size Machine Tool Factories (Limit of Investment to be determined).
 - d) Heavy Foundry Works.
 - e) Heavy Electric Complexes.
 - f) Heavy Mechanical Complexes.
 - g) Electronics Industries.
 - h) Major Vehicle Assembly Plants.
 - i) Ordinance Factories.
 - j) Explosives, Nitric acid and Sulphuric acid plants.
 - k) Vehicular Tires and Tubes Industries.
 - l) Locomotives and Railway Carriage manufacturing plants.
 - m) Government Mint.
 - n) Security Printing Press involved in whole time printing of sensitive documents / currency notes.
 - o) Manufacture of optical glass and optics.
 - p) Nickle cadmium battery industries.
 - q) Nuclear / Separation Plants.
 - r) Large Power Generating Stations.
 - s) Large oil Storage units.
 - t) Oil refineries.
2. No industrial unit shall be set up in areas affected by flood flowing transversely in the strip of one mile of either side across the Grand Trunk Road from Shahdara Town to Muridke Town, without prior permission of the Provincial Government.

3. According to the notification No. AEA-III-3-5/2003 (Vol-III), dated 06.12.2006, “no new sugar mill shall be setup and no enlargement in capacity of the existing sugar mills is allowed in the Province”.
4. Each district Government may declare “negative area” for industry. Such “negative area” be determined by a District Committee after consultation with all stake-holders in light of general policy guidelines issued by the Industries, Commerce & Investment Department and exemptions allowed under Schedule ‘B’ of this Notification as under:

List of Service Industries

- a) Furniture (excluding Band Saw) and also excluding storing Timber / Wood.
- b) Tailoring/ Readymade garments.
- c) Laundry / Dry Cleaning.
- d) Bakery (excluding confectionery).
- e) Syrups (excluding squashes)
- f) Cosmetics.
- g) Service workshop.
- h) Cereal Products like vermicilles.
- i) Candles making.
- j) Printing and Packaging.
- k) Hand loom carpet weaving.
- l) Hotels.
- m) Bidi manufacturing.
- n) Handmade shoes / shoe repairing workshop.

- o) Spooling and thread balls.
- p) Small Hosiery units employing not more than 10 workers.
- q) Atta Chakkies.
- r) Installation of Chaff cutters.
- s) Cotton Grading.
- t) Other small industrial undertakings which do not fall under the Sixth schedule of the Punjab Local Government Ordinance, 2001.

“Other small industrial undertakings” would mean an industrial undertaking in which the total fixed assets (including the cost of land) do not exceed Rs.1.0 million (Rupees one million).

5. No industrial unit mentioned in Schedule ‘C’ of this Notification shall be set up anywhere in the Punjab without prior approval of the Government.
6. The Government reserves the right to refuse establishment / enhancement of any industrial undertaking which is in contravention of the public interest, ecology or any other law / rules for the time being in force.
7. The Government may relax any of the provisions of this notification in case of a particular unit or industry or class of units or industries.

8. NOC from Environment Protection Department, Govt. of the Punjab is required for setting up new Industries.
 - Tourism has been given the status of industry in accordance with Ministry of Industries & Production Circular No. 1-129/99-INV-IV dated 2nd August 1999.
 - The Housing and Construction Sector has also been declared as industry (Finance Division Notification No. 10(10)/IF-11/98, dated 07.04.1999 and 04.06.1999.
 - In accordance with Government notification No. 3(2)/97-INV-IV dated 05.05.1997, Computer Software and Information Technology (IT) have been declared as Industry.

4.11 DECLARATION OF NEGATIVE AREAS

In pursuance of the Clause 4 of the Location Policy notified on 30-09-2002, by the Industries Commerce & Investment Department, Government of the Punjab, the District Govt. Kasur has declared the following negative areas:-

- a) Up to mile stone indicating 10 km. on all the roads emanating from Kasur City.

- b) Up to milestone indicating 05 km. on all the roads emanating from Tehsil headquarters.
- c) Up to mile stone indicating 03 km. on all the roads emanating from Phool Nagar, Kangan Pur, Khudian, Changa Manga, Mustafa Abad, Ellah Abad.
- d) Area restricted or declared as semi restricted by Defense Department,
- e) A belt of 16 km. along Indo - Pak international border
- f) A periphery of 1.0 km. around Residential Locality and
- g) A periphery of 2.5 km . around Sunder Industrial Estate (as notified by the Punjab Government).

In addition to above, it is further ordered as under:-

- a) The laws of local Government and Rural Development Department & Environmental Protection Department shall remain applicable. Both the departments shall ensure compliance of their respective laws.
- b) The Rules of Highway Department will also be observed strictly and it will be 220 ft. from the road on highway whereas it will be 60 ft. for other roads. Moreover no Industry shall be established in flood-affected areas.

- c) No Industrial unit will be established at a distance of 6.1 meter of line & life part of electricity system and within 50 ft. on either side of high-pressure gas lines. Moreover, the areas around the strategic assets as declared by the concerned authorities will also be prohibited for establishment of industries.
- d) The existing Industrial estates will be treated as exempted from the above-mentioned Negative area for the establishment of Industrial undertaking.

Industrial units causing acute pollution / public nuisance i.e. Tanneries, Paper Mills, Textile Processing, Poultry Feed, and other units causing obnoxious smell and effluents like dust etc. would not be established anywhere without prior permission of the District Government.

Note:

- a) Chunian Industrial Estate and Small Industrial Estate, Kasur will be exempt from negative area.
- b) A residential locality in this context would mean a declared / notified Dehi Abadi, a Qasba, Town Committee or a cluster of houses that has assumed the shape of a regular residential locality. A duly notified residential colony / area though not yet developed shall be deemed to be a residential locality.

- c) This is issued in super session of this office Notification No. EIP/KSR/NEGATIVEAREA/196-219, dated 17.01.2009.

4.12 DECLARATION OF SPECIFIED POSITIVE AREAS

Vide the Finance Act, 2008, the Government of Pakistan has enacted a new section “23A” in the Income Tax Ordinance 2001. The Section “23A” is reproduced below:-

“First year allowance.- (1) Plant, Machinery and equipment installed by any industrial undertaking setup in specified rural and under developed areas, and owned and managed by a company shall be allowed first year allowance in lieu of initial allowance under Section 23 at the rate specified in Part II of the third schedule against the cost of the “eligible depreciable assets” put to use after July 1st, 2008.

(2) The provision of Section 23 except sub-sections (1) and (2), thereof, shall mutatis mutandis apply.

The Federal Government may notify “Specified areas” for the purpose of sub-section(1)”

In pursuance of the above mentioned notification District Government Kasur has identified and approved the following specified positive areas for setting up industrial undertakings:

District Government is of the view that Kasur is already over saturated with industrial establishments. Hence, no area is proposed as specified area for the entitlement of First Year Allowance under section 23A of the Income Tax Ordinance, 2001.

4.13 INCENTIVES FOR INVESTORS TO SETUP A UNIT IN EPZs

- a) According to EPZs Authorities, following incentives are available in the Export Processing Zones
1. 100% ownership rights.
 2. 100% repatriation of capital & profits.
 3. No minimum or maximum limit for investment.
 4. Duty free imports of machinery, equipment & material.
 5. No sales tax on input goods including electricity & gas bills.
 6. Obsolete/old machinery can be sold in domestic market of Pakistan after payment of applicable duties & taxes.

7. Freedom from national import restrictions.
8. Foreign exchange control regulation of Pakistan not applicable.
9. Defective goods/waste can be sold in domestic market after payment of applicable duties, maximum upto 3% of total value of export.
10. Duty free vehicle allowed under certain conditions. After 5 years of use, vehicles can be disposed off in domestic market on payment of duty on depreciated value.
11. Domestic market of Pakistan available on same conditions as for imports from other countries.
12. Units operating in EPZs can undertake sub-contracting for units of tariff area subject to payment of duty and taxes on value addition only.
13. Only EPZA is authorized to collect Presumptive tax at the time of export of goods which would be final tax liability.
14. EPZ units allowed to supply goods to Custom manufacturing bonds.
15. Production oriented labour laws to be solely regulated by the Authority.
16. EPZ manufacturer will be treated at par with bonded manufacturers in tariff area for any future incentives to be announced for exporters.
17. Relief from double taxation subject to bilateral agreement.

- b) Facilities to Investors for setting up a unit in EPZs of Pakistan.
1. One window service and simplified procedure.
 2. All infrastructural facilities like water, electricity, gas, telex, fax and telecommunication system are made available by EPZA.
 3. Skilled & un-skilled labour available in abundance.
 4. Sub-contracting without limit on variety and quantity is allowed outside the zone as well as within the zone.
 5. The garment manufacturing units located in Export Processing Zones are eligible to participate in auction of quotas.
 6. GSP concessions given by various countries to imports from Pakistan are available to the manufacturers in the zone.
 7. Peaceful, secure and environmentally protected / pollution free work area.
 8. Inter-unit transfer of finished goods among exporting units allowed.

4.14 PAKISTAN'S INVESTMENT POLICY - KEY FEATURES

General

- The investment policy is liberal and business friendly as it has been designed in consultation with businessmen, investors and representative forums as well as the Multinational Companies (MNCs).

- It provides equal investment opportunities for both domestic and foreign investors.
- All economic sectors open for FDI (Foreign Direct Investment).
- 100% foreign equity allowed.
- No government sanction required.
- Foreign investment on repatriable basis is allowed in all economic sector including manufacturing, agriculture, services, infrastructure and social sectors.
- Foreign investment in Agriculture projects allowed on joint-venture basis by associating minimum local equity of 40%.
- Remittance of Royalty, Technical & Franchise Fee, Capital, Profits, Dividends allowed.
- Minimum foreign equity for non-manufacturing including service sectors has been reduced from \$ 0.3 to \$ 0.15 million. In Agriculture, infrastructure and social sectors, it is \$ 0.3 million.

Tariff and Tax Incentives

- To keep Pakistan competitive in international tariff 5% customs duty has been allowed on import of plant and machinery which is not manufactured locally.
- Sales tax 0% across the board.
- 0% duty on import of raw material for export industry.
- 0% duty on import of agriculture machinery.
- Tax relief in shape of Initial Depreciation Allowance (IDA) has been provided as 50% of machinery cost across the board.

- Tax relief has also been provided for expansion and Balancing, Modernization & Replacement (BMR) in existing industries.

Policy Package of Pakistan

Policy Parameters	Mfg. Sector	Non-Manufacturing Sectors		
		Agriculture	Infrastructure & Social	Services including IT & Telecom Services
Govt. Permission	Not required except for specified industries*	Not required except specific licences from concerned agencies.		
Remittance of capital, profits, dividends, etc.	Allowed	Allowed		
Upper Limit of foreign equity allowed	100%	100%	100%	100%
Minimum Investment Amount (M \$)	No	0.3	0.3	0.15
Customs duty on import of PME**	5%	0%	5%	0-5%
Tax relief (IDA***, % of PME cost)	50%	50%		
Royalty & Technical Fee	No restriction for payment of royalty & technical fee.	Initial lump-sum up to \$100,000 Max Rate 5% of net sales - Initial period 5 years		

* Specified Industries:

- i) Arms and ammunitions
- ii) High Explosives
- iii) Radioactive substances
- iv) Security Printing
- v) Currency and mint

** PME = Plant, Machinery and Equipment

*** IDA = Initial Depreciation Allowance

4.15 INDUSTRIAL FINANCING FACILITIES

Following Financial Institutions in the country are providing various types of fixed investment industrial financing in the foreign and local currency to the industrial sector for establishment of new industrial units as well as for Expansion, Balancing, Modernization and Replacement (BMR) of existing industrial units within the frame-work of industrial/financial policies of the Government of Pakistan.

- 1 AlBaraka Bank (Pakistan) Limited.
- 2 Allied Bank Limited.
- 3 Askari Bank Limited.
- 4 Bank Alfalah Limited.
- 5 Bank Al-Habib Limited.
- 6 Bank Islami Pakistan Limited.
- 7 Barclays Bank PLC.
- 8 Burj Bank Limited.

- 9 Citi Bank N.A.
- 10 Deutsche Bank A.G.
- 11 Dubai Islamic Bank Pakistan Limited.
- 12 Faysal Bank Limited.
- 13 First Women Bank Limited.
- 14 Habib Bank Limited.
- 15 Habib Metropolitan Bank Limited.
- 16 HSBC Bank Middle East Limited.
- 17 Industrial and Commercial Bank of China
- 18 Industrial Development Bank of Pakistan.
- 19 JS Bank Limited.
- 20 KASB Bank Limited.
- 21 MCB Bank Limited.
- 22 Meezan Bank Limited.
- 23 National Bank of Pakistan.
- 24 NIB Bank Limited.
- 25 Oman International Bank S.A.O.G.
- 26 S.M.E. Bank Limited.
- 27 Samba Bank Limited
- 28 Silk Bank Limited.
- 29 Sindh Bank Limited.
- 30 Soneri Bank Limited.
- 31 Standard Chartered Bank (Pakistan)
Limited.
- 32 Summit Bank Limited
- 33 The Bank of Khyber

- 34 The Bank of Punjab
- 35 The Bank of Tokyo-Mitsubishi Limited.
- 36 The Punjab Provincial Cooperative Bank Limited.
- 37 United Bank Limited.
- 38 Zarai Taraqiati Bank Limited.

Source: State Bank of Pakistan

List of Development Financial Institutions (DFIs)

- 1 Bankers Equity Limited.
- 2 House Building Finance Company Limited.
- 3 Pak Brunei Investment Company Limited
- 4 Pak-China Investment Company Limited.
- 5 Pak Oman Investment Company Limited.
- 6 PAIR Investment Company Limited.
- 7 Pakistan Kuwait Investment Company Limited.
- 8 Pak-Libya Holding Company Limited.
- 9 Saudi Pak Industrial & Agricultural Investment Company Limited.

Source: State Bank of Pakistan

Besides the financial institutions mentioned above a number of Leasing Companies, Modaraba Companies, Investment Banks are also providing financing facilities to the industrial sector. Punjab Small Industries Corporation also extends financial assistance to the small/cottage industrial units.

4.16 SALIENT FEATURES OF LOANING SCHEME OF PSIC

Punjab Small Industries Corporation (PSIC) is a body corporate enacted in 1973. One of core functions of PSIC is financial assistance programme for prospective entrepreneurs, skilled youth, artisans and craftsmen all over the Punjab. The priority sectors are as under:

- Service Industries.
- Agro / Agro Support Industries.
- Food Processing Industries.
- Export Oriented Industries.
- Import Substitution Industries.
- Information Technology (IT) Project.
- Handicraft Industry.
- Women Enterprises.

PSIC started credit assistance programme during 1984 and completed 13 schemes up till now. An amount of Rs. 4079 Million has been disbursed to 19,580 entrepreneurs in 36 Districts of Punjab with the recovery rate of 88% that indicates proper utilization of loans.

The maximum loan limit is Rs.3 Million with debit equity ratio of 60:40. The credit assistance facility available for new projects, BMR and Working Capital. The markup rate varies from 0% to 12%.

The repayment period of loan is from 3 years to 6 years with grace period of 3 months to 6 months.

Recently, Government of Punjab has provided an amount of Rs. 2000 Million for disbursement through Service Provider Organization i.e. M/s Akhuwat to un-employed and skilled persons of PVTC, TEVTA, SANATZAR's of Social Welfare Department or other unemployed youth having good business plan.

Up till now, M/s Akhuwat has disbursed an amount of Rs. 1650.00 Million to 94,960 poor household in 33 vocations with average loan size of Rs. 17,382 in Punjab through its 142 offices in 30 districts of the Punjab.

To promote the traditional handicrafts in Punjab, PSIC has also launched dedicated credit assistance schemes for the craftsmen at subsidized markup rates. These craftsmen have also been provided marketing facilities through Pakistan Handicrafts Shops.

4.17 SALIENT FEATURES OF THE SEZ BILL 2012

The Law of SEZ has been made to meet the global challenges of competitiveness to attract FDI. The Law/bill will allow to create industrial clusters with liberal incentives, infrastructure, investor facilitation services to enhance productivity and reduce cost of doing business for economic

development and poverty reduction. The Law further envisages to reduce processes through SEZ in Pakistan. The establishment of SEZs will attract both domestic as well as international investors. The SEZ would play a pivotal role in the economic development of Pakistan as has been witnessed in case of China, Malaysia, Thailand and other states.

It extends to the whole of Pakistan and overrides other laws (anything contrary);

- All SEZ whether Public, Public-Private or Private-Private to be governed under this Act;
- The Board of Approval (BOA) headed by the Prime Minister of Pakistan with the Minister for Finance as the Vice Chairman shall meet as frequently as required but not less than twice a year and decisions shall be taken by a majority of the total membership present and voting;
- SEZs will have exemption from customs duties & taxes for all Capital Goods imported into Pakistan for the development , operations and maintenance of a SEZ;
- Exemption from all taxes on income accruable in relation to the development and operations of the SEZ for a period of ten years, starting from the date of signing of the Development Agreement.
- Zone Enterprises have exemption from custom duties etc. on imports of Capital Goods;

- Exemption from taxes on income for a period of 10 years starting from the date the Development certifies that the Zone Enterprise has commenced commercial operations in the relevant SEZ;

There is no limit to the economic potential of Pakistan. The challenge is to create the enabling environment in which this can be realized. Special Economic zones bill is a step towards the economic stability in the country.

4.18 STRATEGIC TRADE POLICY FRAME WORK (2012-2015)

The government unveiled on 29 January, 2013 a medium term (2012-2015) Strategic Trade Policy Framework, setting a cumulative export target of \$95 billion for three years. The framework, the second announced by the federal government will be implemented with a funding of Rs. 26.14 billion. In the first year, Rs.5 billion will be spent on providing subsidies and support to identified sectors.

The focus of the policy is on promoting regional trade and regulatory efficiency, promoting agro-processed exports, increasing exports from less developed regions, revamping export promotion agencies, increasing green exports, enhancing role of women in exports and pursuing product and market development and diversification.

The salient features of the policy include institutional interventions, export development initiatives and regulatory amendments. The policy, offers cash assistance to 14 sectors along with 19 regulatory frameworks, including ban on products as a protective measure against environmental and health hazards. The new framework is designed to provide assistance only to the non-textile sectors.

Institutional Measures: The government will setup institutions like an Export-Import (Exim) Bank, Pakistan Land Port Authority; Leather Export Promotion Council and a Services Trade Development Council.

Export Development: Major initiatives in the Policy included allowing mark-up rate support of two per cent on prevailing LTFF for future import and purchase of machinery. An allocation of Rs.500 million has been proposed for schemes to be implemented this year. The total amount to be spent in three years is projected at Rs.3 billion. A mark-up support of 1.5% will be provided on export finance scheme (EFS) to selected sectors at a cost of Rs. 1.25 billion, including Rs. 200 million in 2012-2013.

The sectors for EFS support are fish and fish preparations, fruit and vegetables, spices, meat and meat preparations, carpets and rugs, sports

goods, footwear, leather products, surgical goods, cutlery, onyx products, pharmaceuticals, electric fans, transport equipment, electrical machinery, specialized machinery, furniture, handicrafts and computer-related services.

An amount of Rs.14 billion will be given as adhoc relief at three per cent of FoB to offset the impact of higher cost of utilities for exporters in selected sectors. The measure will cost Rs.3bn this year. An amount of Rs.2 billion-Rs125 million will be allocated for marketing development assistance for regional countries.

A Rs. 25 million allocation has been proposed for export promotion campaigns for agro-processed products; Rs. 400 million for encouraging opening of retail outlets; and Rs.400m for subsidizing 50% cost of plant and machinery for establishing processing plants for meat, fruits, vegetables, dates and olives in Azad Jammu and Kashmir, Baluchistan, Gilgit - Baltistan and Khyber Pakhtunkhwa.

An amount of Rs.30 million will be allocated for upgrading rice inspection laboratories, Rs. 20 million for subsidy at 100% of the prevailing mark-up rate for establishing mining and processing units in Khyber Pakhtunkhwa and Baluchistan.

Another Rs.20 million has been allocated for strengthening women's chamber of commerce and

industry, Rs.32 million for setting up a resource management cell at the ministry of commerce, Rs.28 million for establishing leather export promotion council and Rs.70 million for services export development council.

Regulatory Measures

Unrestricted import of used motorized wheelchairs and five-year-old used or second-hand ambulances has been allowed. Two per cent of export proceeds will be allowed to manufacturers-cum-exporters for duty-free import of accessories for value-addition for leather garments and made-ups. Import of non-hazardous plastic scrap has been allowed for industrial consumers for use as raw material. A ban has been imposed on import of plastic waste, hospital waste, used sewerage pipes and chemical containers.

Import of non-sterilized surgical needles and syringes will be restricted to industrial units, condition of Euro-II may be made applicable on import of all types of specialized vehicles, such as crane-mounted lorries, dump trucks and mixtures lorries. The import of used sprinkle lorries will be restricted to a maximum of five year old. All goods from banned list imported in commercial quality shall be allowed to re-export at importer/shipping lines cost. The imported substandard goods from the restricted list should be destroyed within a period of six months without offering any release.

Import of waste and scrape of tyres in completely shredded/ cut form will only be allowed to industrial consumers; domestic standards will equally apply to imported goods as well.

Construction engineering and electrical companies will be allowed to retain abroad the exported machinery to carry out work on export-cum-import basis with the condition that they will import the same on the conclusion of the contract against indemnity bond.

All exporters of edible products are to be registered and export of vegetable ghee and cooking oil will be allowed in packaging of up to 25kg to encourage value-addition.

Steps to contain Environmental & Health Hazards

- Ban on import of plastic waste/scrap-hospital waste, used sewerage pipes and chemical containers.
- Restricting import of non-sterilized surgical needles and syringes to industrial units.
- Only the more fuel efficient Euro-II category crane-mounted lorries, dump trucks, mixture lorries, etc, will be imported.
- Imported used tyres will only be allowed for industrial use.

Institutions to be Setup

- Export-Import Bank.
- Pakistan Land Port Authority.
- Leather Export Promotion Council.
- Service Trade Development Council.

CHAPTER - V

EXISTING PATTERN OF INDUSTRIAL DEVELOPMENT

5.1 DESCRIPTION OF EXISTING INDUSTRIES

There are about 796 large, medium and some small industrial units in the district. Industry-wise installed capacity of major industrial units is given in Table-10.

TABLE-10

Industry-wise Installed Capacity

Sr. #	Industry	No. of units	Annual Installed Capacity
1	A.C/ Refrigerator/ Deep Freezers	1	60 Th.Nos.
2	Batteries	2	230 Th. Nos.
3	Chemical	15	86575 M.Tons, 7700 Liter
4	Dairy Products	5	Milk 2400 Th. Lit Milk Powder 3000 M.Tons, Yogort 14800 Th. Lit.
5	Drugs & Pharmaceutical	6	
6	Flour Mills	12	1520 M.Ton/ Day
7	Fruit Juices	4	25000 Drums, Fruit Pulp 18000 M.Tons, Fruit Juices 15075 Th. Lit., 26335 Th. Crates
8	G.I./ M.S. Pipes	2	96000 M.Tons
9	Glue	1	600 Gallon

10	Ice Cream	2	48000 Th. Litres
11	Jute Textile	1	5500 M.Tons/Day
12	Knitted Textile	10	132 Machines, 432 Th. Pieces
13	Leather Products	6	2109525 Th.Sq. Meters, 5 Th. Dozen.
14	LPG Gas	1	360 M. Tons.
15	Motor Cycle / Rickshaw	2	45000 Nos.
16	Paper & Paper Board	8	218506 M.Tons
17	Paper Cone	1	23000 M.Tons
18	Pencils/ Bal Points	2	5658 Th. Dozen
19	Polyester Yarn	2	6200 M.Tons
20	Poultry Feed	6	1004 Th. M.Tons
21	Power Generation	10	222.33 MW
22	Rice Mills	13	15 Shellers
23	Sugar	3	13000 TCD
24	Tannery	364	216448 Th. Sq.Ft
25	Tents	6	72 Looms, 192 Th. Nos.
26	Textile Composite	8	30332 Rotors , 125416 Spindles, 738 Looms
27	Textile Made Ups	1	800 Th. Nos.
28	Textile Processing	13	52892 Th. Meters
29	Textile Spinning	103	1911073 Spindles, 16584 Rotors
30	Textile Weaving (Mill Sector)	71	7018 Looms
31	Tractors	1	8000 Nos.
33	Vegetable Ghee / Cooking Oil	3	37800 M.Tons
34	Wire & Cable	3	12500 M.Tons
35	Zips	1	60000 Roles

Source: District Officer (E&IP), Kasur.

Note: For further details visit: www.doi.pitb.gov.pk

CHAPTER - VI

FUTURE INDUSTRIAL POTENTIAL

Keeping in view the availability of raw material, skilled labour, linkage between the industrial units, local/national/international demand, future industrial potential of district Kasur is discussed hereunder:

It would, however, be kept in mind that though the above mentioned factors facilitate the success of any industrial unit, yet the entire success depends upon the investors/entrepreneurs and the capabilities of the personnel having the managerial control because any of these factors, if lacking is manageable. Therefore, it is advisable that detailed feasibility of industrial projects must be carried out before making final decision for investment.

6.1 AGRICULTURE

Main crops of district Kasur are sugarcane, wheat, rice, and cotton. The annual average production of sugarcane, wheat and rice over the period 2008-11 was 1849.48, 575.23 and 165.28 thousand M.Tons respectively and of cotton was 33.64 thousand bales. Major fruits are citrus, guava and mango. Their annual average production over the period 2008-11 was 20.54, 25.78 and 4.87 thousand M.Tons respectively. A variety of

vegetables are also grown in the district. (Ch. 3, Section 3.1).

At present in district Kasur there are 12 flour mills, three sugar mills, eight paper and paper board mills, four fruit juice plants (Chapter 5).

In view of the availability of various raw-materials and existing agro-based industries, there seems little scope for additional units except for vegetable dehydration unit and solvent oil extraction units.

6.2 LIVESTOCK

As per Live Stock & Dairy Development, the population of cattle, buffaloes, sheep and goat was 472, 1260, 105 and 420 thousand heads respectively. The annual availability of hides and skins is estimated at 98,200 pieces.

As regards poultry, there are 862 broiler and 45 layer and 64 breeding farms having rearing capacity of 30282, 301 and 1280 thousands birds respectively (Ch-3, Section 3.3). There are already a number of tannery units operating in the district, therefore, there exists little scope for tannery units. However, in view of proximity to Lahore city, there exist good prospects for cattle/goat/sheep fattening farms, dairy farms, dairy products, ice cream, meat/poultry processing, animal/poultry feed.

6.3 FOREST

District Kasur is quite rich in forest resources. The annual average production of timber and firewood over the period 2008-11 was 2.08 and 3.09 thousand cubic meter respectively, which reflect very good prospects for wood seasoning/processing unit, furniture unit, chip/veneer board unit and flush door/window unit.

6.4 INDUSTRY

District Kasur has been traditionally a centre of tanning units. With the establishment of Chunian Industrial Estate, a variety of industrial units are being established. However the main thrust is on textile spinning. There are also a number of power looms units in the district (Ch. 5)

In view of the tanning, textile spinning and power looms units there exists big scope for textile processing / printing, quality men/women under garments, ready-made garments, canvas cloth, tents/tarpaulins, textile related chemicals, sizing units, paper cones/bobbins, textile machinery repairing shops, tanning chemicals, leather garments and leather products, leather footwear, etc.

6.5 DEMAND BASED INDUSTRIES

In view of the accelerated industrial development in Chunian Industrial Estate, there exist very good prospects for thermal electric generation unit as well as hydro-electric generation unit by using the water flow of Baluki-Sulamani link canal. Besides, there also exists good prospect for pre-stressed RCC beams/slabs/girders, steel structure, packaging units, electric wire/cables, G.I.wire, electric switch gear/control gear, generators, insulators/capacitors, circuit breakers, paints/varnishes, etc.

6.6 LIST OF IDENTIFIED PROJECTS

In view of the discussion given in section 6.1 to 6.5 following industrial projects have been identified for investment in district Kasur.

- Agriculture waste, by products raw material based industries for maximization of value addition chain
- Animal/Poultry Feed
- Canvas Cloth
- Cattle/Sheep/Goat Fattening Farms
- Chip/Veneer Board
- Circuit Breakers
- Dairy Farms
- Electrical Switch Gear/Control Gear
- Electric Wires/Cables

- Energy conservation / efficiency
- Flush Doors/Windows
- Furniture
- Generators
- G.I. Wire
- Hydro Power Generation Unit
- Ice-Cream
- Insulators/Capacitors
- Leather Footwear
- Leather Garments
- Meat/Poultry Processing Unit
- Paints/Varnishes
- Paper Cones/Bobbins
- Power generation through coal and other alternate fuels
- Power generation through bagasse
- Pre-Stressed RCC Beams/Slabs/Girders
- Quality Women/Men under Garments
- Sizing Units
- Solvent Oil Extraction Plant
- Steel Structure
- Tanning Chemicals
- Textile Machinery Repairing Shop
- Textile Processing/Printing
- Tents/Tarpaulins
- Textile Related Chemicals
- Thermal Power Generation Unit
- Vegetable Dehydration
- Waste heat recovery system
- Wood Seasoning/Processing

Directory of Industrial Establishments, Kasur

Sr. No.	Name / Address of unit	Phone No. / Website	Industry	Estb. Year	Investment (Th.Rs.)	Emp	Product	Annual Installed Capacity
1	Sanpak Engineering Industries (Pvt) Ltd. 4 Km Raiwind Manga Road	5393363-5	Ac /Refrigerator /Deep Freezer	1993	95000	156	Automobile Air Conditioner System	60 Th.Nos.
2	Ali Machinery Tools Co., 44-Km. Multan Road	03004418737, 2005567-8	Auto Parts	1996	5000	10	Auto Parts	20000 Th. Rs.
3	Massha Allah Engineering Peeroowala Road Syed Abad Town	0492770667	Auto Parts	2002	10140	8	Auto Parts	10 Th.Nos.
4	Sayyed Machinery Ltd. Raiwind Manga Road	5391214, 5753744	Auto Parts	1982	20260	50	Auto Parts	100 Th.Nos.
5	Millat Industrial Products (Pvt) Ltd. 49 Km Off Multan Road Bhai Pheru	4540528	Batteries	2002	25000	25	Batteries	130 Th.Nos.
6	Naffay Battery (Pvt) Ltd. Gagga Serai Road 49 Km Multan Road Bhai Pheru	7604440	Batteries	1993	20000	28	Batteries	100 Th.Nos.
7	Tepal Tea (Pvt) Ltd. Manga Raiwind Road	5063891-4	Blending Of Tea	1979	77290	190	Tea Blending	56 M.Tons
8	Waseem Engg. (Pvt) Ltd, 49 Km Multan Road	4540295 www.gratin e.Engg.com	Cement Products	2002	3060	39	Concrete Poles	30000 Nos.
9	Advance Chemical (Pvt) Ltd. 7 Km. Raiwind Manga Road	6361501- 6366005	Chemical	1989	49700	30	Oxalic Acid	600 M.Tons

Sr. No.	Name / Address of unit	Phone No. / Website	Industry	Estb. Year	Investment (Th.Rs.)	Emp	Product	Annual Installed Capacity
10	Al Khalid Chemicals Punjab Small Industrial Estate 8 Km Ferozpur Road	0333-4216378	Chemical	2005	2200	14	Chemical	120 M.Ton
11	Alpha Chemicals (Pvt) Ltd. 65 Km Multan Road Jambar Kalan Pattoki	04943-88055	Chemical	1991	75760	37	Chemical	60 M.Tons
12	Azam Chemicals 15 Km Kasur Ferozpur Road	4902644	Chemical	2000	15000	5	Gelatine	300 M.Tons
13	Bahu Chemical Industries Khaim Karan Road	0300-9410795	Chemical	2004	4200	5	Zinc Sulphate	100 M.Ton
14	Chaman Chemical Industries Pvt. Ltd. 54 Km Chunian Industrial Estate		Chemical	1992	52022	C	Sodium Sulphide , Barium Carbonate	2100 M. Ton , 4500 M.Tons
15	Chand Chemical Industries (Pvt) Ltd. 54 Km Chunian Industrial Estate	04943-9214	Chemical	1996	22397	C	Cobalt Nephthinate , Butyle Acetate	30 M. Ton , 300 M.Tons
16	Cnc Chemical (Pvt) Ltd. 58 Km Multan Road Bhai Pheru	4511947	Chemical	2004	28000	10	Chemical	6000 M.Tons

Sr. No.	Name / Address of unit	Phone No. / Website	Industry	Estb. Year	Investment (Th.Rs.)	Emp	Product	Annual Installed Capacity
17	Faras Combine Marketing Co (Pvt) Ltd 65 Km Jumber Rohi Multan Road Chunian Industrial Estate	049-4388067	Chemical	1991	30000	37	Sulphuric Acid, Aluminium Sulphate, Formic Acid	19200, 6600, 500 M.Tons
18	Midas Chemical Industries Ltd. 6 Km Kot Radha Kihsan Road	0492-002009	Chemical	2004	505000	58	Acitic Acid	500 M.Tons
19	Moon Chemicals 47 Km Sie Ferozepur Road	5764597, 0300-4476500	Chemical	2002	21000	11	Zinc Sulphate, Tonic Spray Multisol	50 M.Tons, 500 Litre
20	Ms Enterprises (Pvt) Ltd. 3.5 Km Kot Radha Kishan	5392351-2	Chemical	1996	21000	80	Chemical	7200 Th.Litres
21	Tufail Chemical Industries (Pvt) Ltd. 7 Km Raiwind Manga Road Village Rossa	5383951-2	Chemical	1995	200000	104	Formic Acid, Sodiam Sulphate, Astex	6000 M.Tons., 8000 M.Tons, 2000 M.Tons.
22	Tufail Chemical Industries (Pvt) Ltd. 7 Km Raiwind Manga Road Village Rossa	0342-5352490	Chemical	1995	99936	122	Sodium Sulphate	5115 M.Tons
23	Tufail Chemicals Industries Ltd. 7 Km Raiwind Manga Road	5383951-5	Chemical	1994	86626	232	Sulphuric Acid, Formic Acid Sodium Sulphate	15000, 4000, 5500 M.Tons

Sr. No.	Name / Address of unit	Phone No. / Website	Industry	Estb. Year	Investment (Th.Rs.)	Emp	Product	Annual Installed Capacity
24	Attock Paper & Board Mills Raiwind Manga Road	281392-875287	Chip / Straw Board	1990	15000	C	Straw Board	600 M.Tons
25	Gulf Wood Industries (Pvt) Ltd. 3 Km Manga Road Raiwind	5392423	Chip / Straw Board	1994	376967	36	Chip Board	4800 Th.Sqft
26	Pak Forest Industries (Pvt) Ltd. 4 Km. Manga Raiwind Road		Chip / Straw Board	1992	25010	C	Veneer Board	20000 Sq. Ft
27	Pak Forest Industries (Pvt) Ltd. 4 Km. Manga Raiwind Road	5391150, 6369765	Chip / Straw Board	1992	25010	C	Chip Board	100 Th.Sqft
28	Qulaity Board Industries (Pvt) Ltd. 31.5 Km Mouza Bablian Ottar Raiwind Road	5391209-10	Chip / Straw Board	1993	25000	29	Hard Board	16140000 Sq. Ft
29	Abbas Cold Storage 21 Km Depalpur Road		Cold Storage	2004	4000	10	Vegetable/ Fruit	15000 Bags/Crates
30	Abdullah Cold Storage And Agro Food Enterprises 9 Km Depalpur Road	0492002097- 2719400	Cold Storage	1999	30000	45	Vegetable/ Fruit	50000 Bags/Crates
31	Icepak Ltd. 6 Km Manga Raiwind Road	5383644-6	Cold Storage	1989	26000	152	Vegetable/ Fruit	50000 Bags/Crates
32	Ittefaq Cold Storage Kot Radha Kishen	5382874	Cold Storage	2001	5000	6	Vegetable/ Fruit	15000 Bags/Crates
33	Lucky Cold Storage Dhing Shah Depalpur Rd	2793443	Cold Storage	1984	20000	9	Vegetable/ Fruit	18000 Bags/Crates

Sr. No.	Name / Address of unit	Phone No. / Website	Industry	Estb. Year	Investment (Th.Rs.)	Emp	Product	Annual Installed Capacity
34	Madina Cold Storage 8 Km Depalpur Road	2731045	Cold Storage	1995	25000	7	Vegetable/ Fruit	12000 Bags/Crates
35	Masood Cold Storage Dhing Shah Depalpur Road	04942-001211	Cold Storage	2005	20000	12	Vegetable/ Fruit	30000 Bags/Crates
36	Mian Saeed Cold Storage Kot Radha Kishan	5382615	Cold Storage	2005	3250	5	Vegetable/ Fruit	3325 Bags/Crates
37	New Ittefaq Cold Storage Mir Sahib Road Kot Radha Kishan	5372874	Cold Storage	1980	14900	8	Vegetable/ Fruit	14000 Bags/Crates
38	Saif Cold Storage Ferozepur Road	2721410	Cold Storage	1989	16000	6	Vegetable/ Fruit	10000 Bags/Crates
39	Sarwar Cold Storage 8 Km Bahadarpura Depalpur Rd	2731222-111	Cold Storage	1995	12000	17	Vegetable/ Fruit	26000 Bags/Crates
40	Abid And Brothers Haji Farid Road	2762857	Cotton Ginning And Pressing	1945	3000	10	Cotton Lint /Seed	2 Sawgin, 1 Press
41	Ashraf Cotton Ginning Factory Main Bazar Pattoki	4420795	Cotton Ginning And Pressing	1964	25000	11	Cotton Lint /Seed	4 Sawgin, 1 Press
42	Bias Ginning Mills (Pvt) Ltd. Kasur Road Maniwala Allahabad	04449-51313-15	Cotton Ginning And Pressing	1992	6600	C	Cotton Lint /Seed	5 Sawgin, 1 Press
43	Haji M Yousaf, Abdul Razaq Cotton Factory (Pak Cotton Factory) Main Bazar	4420861	Cotton Ginning And Pressing	1973	23500	12	Cotton Lint /Seed	4 Sawgin, 1 Press

Sr. No.	Name / Address of unit	Phone No. / Website	Industry	Estb. Year	Investment (Th.Rs.)	Emp	Product	Annual Installed Capacity
44	M.Usman Cotton Factory (Pvt) Ltd. 6 Km From Pattoki Gt Road Pattoki	4420861-4420656	Cotton Ginning And Pressing	1994	7900	14	Cotton Lint /Seed	8 Sawgin , 1 Press
45	Chaudhary Dairies Ltd. 62 Km Multan Rd Bhaipheru	443320-04943	Dairy Products	1986	160726	509	Milk , Milk Powder	55890 Th. Litres , 3343 M.Tons
46	Haleeb Foods Ltd. 62 Km Multan Road	510874-5	Dairy Products	1982	1438092	1315	Milk	900 Th.Litre
47	Idara-E-Kissan 75 Km Multan Road Pattoki	5824632	Dairy Products	1999	57000	40	Milk	1500 Th.Litres
48	Millac Foods (Pvt) Ltd. 4.5 Km Raiwind Manga Road	5392266-7	Dairy Products	2001	127379	329	Milk Powder	3000 M.Tons
49	Prime Dairy Ltd. Raiwind Manga Road	6304561-5834341	Dairy Products	1983	63470	250	Yogurt	14800 Th. Litres
50	City Agro Engineering 3.5 Km Manga Raiwind Road	5383981-2	Diesel Engines	2000	20000	13	Diesel Engine	4000 Nos.
51	Ali Doubling Industries Main Road Shahra E Farooq E Azam	2772293	Doubling Of Yam	1984	20500	7	Yam	2 Machines
52	Ali Twisters (Pvt) Ltd. 43 Km. Multan Road	5751290-3	Doubling Of Yam	1992	17000	C	Yam	1 Machines
53	Dear Thread Works (Pvt) Ltd. 3 Km Managa Road Raiwind	5391586	Doubling Of Yam	2000	3300	39	Yam	25000 Kg
54	Maliman Doubling Basti Chiragh Shah	2761979	Doubling Of Yam	1991	20700	12	Yam	2 Machines

Sr. No.	Name / Address of unit	Phone No. / Website	Industry	Estb. Year	Investment (Th.Rs.)	Emp	Product	Annual Installed Capacity
55	Muhammad Akbar Doubling Factory College Road		Doubling Of Yam	1996	20000	6	Yarn	2 Machines
56	Usman Doubling Basti Chiragh Shah	2772127	Doubling Of Yam	1991	11300	11	Yarn	2 Machines
57	Zeeshan Amjid Textile Main Lahore Rd Dingipura	2771067	Doubling Of Yam	1997	21000	8	Yarn	2 Machines
58	A.Z. Pharmaceutical Co. Ltd. 4 Km. Manga Raiwind Road	0321-7356766, 5392260, 5392265	Drugs & Pharmaceuticals	1994	119656	103	Syrups	250 Th. Litres
59	Army Welfare Pharmaceuticals Balloki Rd Bhaipheru	2215,2314, 3549	Drugs & Pharmaceuticals	1990	1075000	528	Tablets	1500 Th. Nos.
60	Himont Chemicals (Pvt) Ltd. 3 Km Manga Raiwind Road		Drugs & Pharmaceuticals	1996	22397	50	Syrup, Tablet	60 Th. Litre ,65000 Th.Nos.
61	Martin Dow Pharmaceuticals (Pakistan) Ltd. 46 Km Multan Road	4540392-4	Drugs & Pharmaceuticals	1996	50000	46	Tablets, Capsules	300 Million Nos. 6 Million Nos.
62	Pak General Products (Pvt) Ltd. 44 Km Multan Road		Drugs & Pharmaceuticals	1994	14707	C	Syrup, Tablet	74 Th. Litres , 465000 Th.Nos.
63	Raazee Therapeutics (Pvt) Ltd. 48 Km Lahore Kasur Road	111666900	Drugs & Pharmaceuticals	1995	60369	71	Syrups, Tablets, Capsules	1020 Th.Litres, 500 Th.Nos, 1300 Th.Nos.
64	B.H.B. Dyes Sahari Road Kot Murad Khan	2760711	Dyes	1998	7500	C	Leather Dyes	90000 Kgs.

Sr. No.	Name / Address of unit	Phone No. / Website	Industry	Estb. Year	Investment (Th.Rs.)	Emp	Product	Annual Installed Capacity
65	Sallous Industries Ltd. 45 Km Multan Road	4540098	Elastic	1986	32450	C	Elastics	800 Th.Meters
66	Madina Steel Industries 42 Km. Feroze Pur Road	2716178-9	Electric Furnace	1989	12367	40	Ingot	6000 M.Tons
67	Trans Pak Steel (Pvt) Ltd 46 Km Multan Road	5221327	Electric Furnace	1990	70000	C	M.S. Bilot/ Ingot	1.5 M.Tons
68	Vision Engineering (Pvt) Ltd. 49 Km Multan Road	540295	Electric Transformers	2000	3700	9	Transformers	30000 Nos.
69	Saya Cotton Mills (Pvt) Ltd.	5838822	Embroidery	2000	52542	74	Embroidered Cloth	4 Machines
70	Al Fayyaz Flour Mills (Pvt) Ltd. Sarfraz Nagar	4510366	Flour Mills	1992	15000	19	Flour	120 M.Ton/ Day
71	Al Munir Roller Flour Mills Bye Pass Hujra Road Kot Gama Chunian		Flour Mills	2003	3000	C	Flour	100 M.Tons/Day
72	Al-Fayyaz Flour Mills (Pvt) Ltd. Sarfraz Nagar, 50 Km., Multan Road	4510366	Flour Mills	1992	8500	20	Flour	120 M.Ton/ Day
73	Baba Kamal Chishti Flour Mill Opp Darbar Baba Kamal Chishti	2761932	Flour Mills	2005	5700	Uc	Flour	120 M.Ton/ Day
74	Bhullar Flour Mills 37 Km Ferozepur Road	4450498	Flour Mills	2004	36000	10	Flour	240 M.Tons/Day

Sr. No.	Name / Address of unit	Phone No. / Website	Industry	Estb. Year	Investment (Th.Rs.)	Emp	Product	Annual Installed Capacity
75	Ghaznavi Industries (Pvt) Ltd. 65 Km., Multan Road Jumber Kalan, Pattoki	5388181-2, 4331633	Flour Mills	1990	15000	18	Flour	180 M.Tons/Day
76	Ittefaq Roller Flour Mills Raiwind Road	2762239	Flour Mills	2000	8000	11	Flour	160 M.Ton/Day
77	Mistri Roller Flour Mills Habib Pura, Near Railway Station	2773197	Flour Mills	1987	33	12	Flour	100 M.Ton/Day
78	National Roller Flour Mills Circular Road	2761869	Flour Mills	1975	13800	17	Flour	120 M.Ton/Day
79	Special Flour Mills Allah Abad Road Chunian	4310268	Flour Mills	1995	8000	10	Flour	80 M.Ton/Day
80	Sunshine Flour Mills Halla Road Pattoki		Flour Mills	1995	65000	C	Flour	60 M.Tons/Day
81	United Roller Flour Mills Bye Pass Noorpur Jattan Allah Abad		Flour Mills	1997	800	C	Flour	120 M.Ton/Day
82	Asian Food Industries (Pvt) Ltd. Daras Road	539239-41	Food Products	1967	364139	295	Food Products	10200 M.Tons
83	K & N'S Foods (Pvt) Ltd. 6 Km Manga Raiwind Road	5392708-14	Food Products	1997	84365	241	Processed Chicken	14400 M.Tons
84	Rafhan Best Foods Ltd. 52 Km Lahore Multan Road	4510376-9	Food Products	1993	399967	340	Food Products	19838 M.Tons

Sr. No.	Name / Address of unit	Phone No. / Website	Industry	Estb. Year	Investment (Th.Rs.)	Emp	Product	Annual Installed Capacity
85	Suleman Qayyum Steel Pvt. Ltd. 40 Km Ferozepur Road		Foundry Products	1991	10000	C	M.S. Bilot/ Ingot	56 M.Tons
86	Fresh Juices Ltd. 62 Km Multan Raod Bhaipheru	5388238	Fruit Juices	1989	47500	18	Fruit Juices	200000 Crates, 25000 Drums
87	Indus Fruit Products Ltd. 65 Km Main Multan Road Jamber Kalan	5388017	Fruit Juices	1990	62500	67	Fruit Pulp, Fruit Juices	18000 Tons, 75 Th.Litres
88	Popular Food Industries (Pvt) Ltd. (Unit No.2) 49 Km Multan Road Sarfraz Nagar	4540177	Fruit Juices	2004	100000	40	Fruit Juices	15000 Th.Lites
89	Standard Fruits Ltd 46Th Km Multan Road	4540137	Fruit Juices	1986	13394	70	Tetra Pack, Bottles	26315 Th.Crates, 2342 Th.Nos.
90	Bbj Pipe Industries (Pvt) Ltd. 48.5 Km Multan Road Bhai Pheru	4540280	G.I. / M.S.Pipes	1991	31000	11	Steel Pipe	60000 M.Tons
91	Jamal Tube Mills (Pvt) Ltd. Raiwind Manga Road	7650707-7662628	G.I. / M.S.Pipes	1992	90000	C	G.I. Pipe	36000 M.Tons
92	Mashallah Glue Factory 42 K.M. Ferozepur Road	2716164	Glue	1999	2500	15	Glue	600 Gallon
93	Amira Textiles (Pvt) Ltd. 3 Km Off Manga Raiwind Road	5393705-6	Hosiery Products	1990	13500	C	Hosiery Products	3000 Lac Pcs

Sr. No.	Name / Address of unit	Phone No. / Website	Industry	Estb. Year	Investment (Th.Rs.)	Emp	Product	Annual Installed Capacity
94	Gulzar Knitting (Pvt) Ltd., 3.5 Km Raiwind Manga Road	5393430	Hosiery Products	1991	19700	425	Sports Socks	230 Machines
95	Ital Sports (Pvt) Ltd. 60 Km Multan Road Bhai Pheru	4388153	Hosiery Products	1991	45000	350	Sports Socks	225 Th.Dozen
96	Kohenoor Hosiery, (Division Of Kwml), 8 Km Manga Raiwind Road	539141-5 www.kohinoorweaving.com	Hosiery Products	2003	46000	1400	Socks	250 Machines
97	Marks (Pvt) Ltd. 2 Km Chunian Bye Pass Raiwind	5393413	Hosiery Products	2004	70000	20	Sports Socks	900000 Dozen
98	Recto Industries (Pvt) Ltd. 4 Km Manga Raiwind Road	5393465-7	Hosiery Products	2000	70000	266	Hosiery Products	1800 Lac Pcs
99	Lever Brothers Pakistan Ltd. 46 Km.Multan Road Manga Nathey Jagir	0342-7390192&3	Ice Cream	1995	160000	276	Ice Cream	18000 Th. Litres
100	Walls Ice Cream Factory 46 Km Multan Road	4540301-7	Ice Cream	1994	2000000	99	Ice Cream	30000 Th.Litres
101	Hudabiya Engineering (Pvt) Ltd. Manga Raiwind Road	5118062	Industrial Machinery	1992	190000	C	Sugar Mill Parts	100 Th.Nos.
102	Zeeshan Traders (Pvt) Ltd. 2 Km Off Raiwind Manga Road	5391130	Industrial Machinery	1994	21000	58	Rotary Screen	800 Th. Pcs.

Sr. No.	Name / Address of unit	Phone No. / Website	Industry	Estb. Year	Investment (Th.Rs.)	Emp	Product	Annual Installed Capacity
103	Pioneer Jute Mills 42 Km Lahore Multan Road	5384197-8	Jute Textile	1996	54547	590	Jute Products	5500 M.Tons/D ay
104	Aman Fabric Ltd. Nathay Khalsa Bhai Pheru	856076	Knitted Textile	1986	1920	C	Knitted Fabrics	5 Machines
105	Arroj Garments Associate Chak No.65 Dina Nath	4877610	Knitted Textile	1993	5200	75	Knitted Fabrics	14 Machines
106	B.B. Corporation Ltd. 44 Km. Multan Road	4540559	Knitted Textile	1990	30000	79	Knitted Fabrics	432000 Pcs
107	Forest Sweaters (Pvt) Ltd. 2.5 Km.Manga Raiwind Road	5391150, 7390867	Knitted Textile	1998	12500	40	Knitted Fabrics	5 Machines
108	J.M. Knits (Pvt) Ltd. 48 Km Multan Road	049439559	Knitted Textile	1993	70300	48	Knitted Fabrics	26 Machines
109	K.T.B. Knitwear (Pvt) Ltd. 44 Km. Multan Road	3944	Knitted Textile	1995	15000	C	Knitted Fabrics	30 Machines
110	Regent Knitwear (Pvt) Ltd., 1.5-Manga Raiwind Road		Knitted Textile	1999	30000	C	Knitted Fabrics	27 Machines
111	T.Jay Corporation 37 Km. Ferozepur Road		Knitted Textile	1993	8000	C	Knitted Fabrics	3 Machines
112	Textile Asia Ltd. 3-Km.Off Manga Raiwind Manga Road	5392656	Knitted Textile	1999	13400	575	Knitted Fabrics	16 Machines

Sr. No.	Name / Address of unit	Phone No. / Website	Industry	Estb. Year	Investment (Th.Rs.)	Emp	Product	Annual Installed Capacity
113	Wazir Fabrics (Pvt)Ltd Manga Raiwnid Road Raiwind	5393385	Knitted Textile	1992	29316	110	Knitted Fabrics	6 Machines
114	Acme Technology Pakistan (Pvt) Ltd.	5384747-50	Leather & Leather Products	2003	80680	75	Artificial Leather	1200000 Th.Sq.Me ters
115	Leader Tanneries (Jacket Unit) Qaim Khan Town	2720317	Leather & Leather Products	2000	1500	12	Leather Products	25 Th.Nos.
116	Real Leather Khara Road	0300-6591198	Leather & Leather Products	2005	2700	8	Leather Products	5 Th.Dozen
117	S.K.M. Textile Mills 3 Km Manga Road	5393152	Leather & Leather Products	1999	5000	18	Rexin	6500 Sq. Meters
118	S.K.M.Usethane Textile Industries Manga Raiwind Road	5393152	Leather & Leather Products	2000	200000	57	Artificial Leather	3000 Th. Meters
119	Sabina Polymer Products Chak No.65 Manga Raiwind Road	5393072	Leather & Leather Products	1999	12103	34	Rexin	900000 Sq.Meters
120	Ab Gas Company 75 Km Multan Road	5884450, 5865271	Lpg Gas	2004	10000	13	Lpg Gas	360 M.Tons
121	Ghani Automobile Industry Ltd. 49 Km Multan Road Sarfraz Nagar	0300-4003049	Motor Cycle / Rickshaw	2005	43000	8	Motor Cycles	5000 Nod.
122	Kohinoor Motor Works Ltd. 43 Km Multan Road Manga Mandi	0342-359083	Motor Cycle / Rickshaw	1995	330136	356	Motor Cycles	40000 Nos.

Sr. No.	Name / Address of unit	Phone No. / Website	Industry	Estb. Year	Investment (Th.Rs.)	Emp	Product	Annual Installed Capacity
123	Oyster Industries (Pvt) Ltd. 6 Km Off Kasur	0492-002300	Motors / Pumps	2002	1000	44	Tube Well Pumps	3600 Nos.
124	Yarmrouk Paper Board Industries (Pvt) Ltd. 61 Km Jumber Khurd Multan Road Bhai Pheru	4388301, 4388245	Packages	1991	41213	83	Corrugated Box	10500 M.Tons
125	Accord Processing & Tradings (Pvt) Ltd. 61 Km Multan Road Jumber Khurd Bhai Pheru	4388301	Paper And Paper Board	1998	52000	95	Paper Board	10000 M.Tons
126	Century Paper And Board Mills Ltd 66 Km Multan Road Phoolnagar	4510061-2, www.centurypaper.com.pk	Paper And Paper Board	1984	2365895	939	Pulp, Paper & Board, Corrugated Boxes	36000 M.Tons, 80000 M.Tons, 15000 M.Tons
127	Hudaibia Paper Mills Ltd. 2/3 Km.Manga Raiwind Road	6368401	Paper And Paper Board	1993	30683	C	Paper	36000 M.Tons
128	Newton Gatta Industries (Pvt) Ltd. 63 Km Multan Road	4511501	Paper And Paper Board	2001	46000	19	Gatta Patti	2500 M.Tons
129	Premier Paper Products (Pvt) Ltd. Chunian		Paper And Paper Board	1988	17200	C	Paper	18000 M.Tons
130	Prestige Paper And Board (Public) Mills Ltd. Raiwind Manga Road 7 Km Near Ravi Spinning	5354366, 5354366	Paper And Paper Board	1995	157000	C	Tissue Papers	1.5 M.Tons

Sr. No.	Name / Address of unit	Phone No. / Website	Industry	Estb. Year	Investment (Th.Rs.)	Emp	Product	Annual Installed Capacity
131	Shaheen Paper & Board Industries (Pvt) Ltd. 4 Km Raiwind Manga Road	5391030	Paper And Paper Board	1989	15500	42	Paper	7500 M.Tons
132	Tasseer Paper & Board Mills (Pvt) Ltd. Manga Raiwind Road		Paper And Paper Board	1994	150000	C	Paper Board	13500 M.Tons
133	H.K. Industries (Pvt) Ltd. 59 Km. Multan Road Bhai Pheru Phool Nagar	7565641-2	Paper Cone	1988	29556	14	Paper Cone	23000 M.Tons
134	Fast Line (Pvt) Ltd. Village Kamogil 49 Km Multan Road	4540081-2, 111-000-700	Pencils/ Ball Points	1991	23354	175	Pencils	5200000 Dozen
135	Sayyed Stationery (Pvt) Ltd. 1 Km., Head Balloki Road Bhaipheru Phool Nagar	4510824, 111-000-700	Pencils/ Ball Points	1987	52500	150	Ball Point	5.5 Million Nos.
136	Doaba Plastic Products (Pvt) Ltd. 3 Km Manga Raiwind Road	5834158-5834495	Plastic Products	1993	15763	22	Plastic Products	1200 M.Tons
137	Fine Crysto Plast (Pvt) Ltd. 43 Km Multan Road Manga Mandi		Plastic Products	1993	57660	C	Plastic Products	200000 M.Tons
138	Lucky Plastic (Pvt) Ltd.	4540059	Plastic Products	1992	44300	85	Pvc Sheets	2000 M.Tons

Sr. No.	Name / Address of unit	Phone No. / Website	Industry	Estb. Year	Investment (Th.Rs.)	Emp	Product	Annual Installed Capacity
139	Wazirabad Ploy Industries Pvt. Ltd. 48 K.M. Multan Road Nathe Jageer	6687411-2	Plastic Products	1991	44300	85	Pvc Sheets	2000 M.Tons
140	Ami Polypropylene (Pvt) Ltd. Raiwind Kasur Road	0300-6591891	Poly Propylene Bags	2000	1225	70	Poly Propylene Bags	20 Looms
141	Amtual Rehman Industries (Pvt) Ltd. 58 Km Multan Road Janber		Poly Propylene Bags	1991	20500	C	Poly Propylene Bags	600 M.Tons
142	Arfeen Poly Industries, 5-Km.Raiwind Manga Road	0300-8477234	Poly Propylene Bags	1920	8500	70	Poly Propylene Bags	20 Looms
143	Dae Duck Corporation (Pvt) Ltd. 6 Km Raiwind Manga Road		Poly Propylene Bags	1995	20000	C	Poly Propylene Bags	500 M.Tons
144	Doaba Plastics (Pvt) Ltd. 3 Km Manga Raiwind Road	04951-5391184	Poly Propylene Bags	1993	6000	42	Poly Propylene Bags	300 M.Tons
145	Jan Poly Bags (Pvt Ltd., 8-Km.Manga Raiwind Road		Poly Propylene Bags	1999	6750	35	Poly Propylene Bags	10 Looms
146	Lahore Polypropylene Industries (Pvt) Ltd., 45-Km. Multan Road	0321-4393001	Poly Propylene Bags	1994	27000	78	Poly Propylene Bags	120 Looms
147	Madina Poly Pack (Pvt) Ltd. 2 Km. Raiwind Manga Road		Poly Propylene Bags	1993	25225	40	Poly Propylene Bags	16 Looms

Sr. No.	Name / Address of unit	Phone No. / Website	Industry	Estb. Year	Investment (Th.Rs.)	Emp	Product	Annual Installed Capacity
148	Madina Poly Packages 43 Km Multan Road	0300-4301128	Poly Propylene Bags	1994	40000	85	Poly Propylene Bags	54 Looms
149	Poly Pack (Pvt) Ltd. 4 Km Raiwind Manga Road	0300-8459595, 0300-8434115, 042-5757491-2, 5877048-9	Poly Propylene Bags	1991	365212	325	Poly Propylene Bags	12800 M.Tons
150	Poly Packages (Pvt) Ltd. Manga Raiwind Road	5392112	Poly Propylene Bags	1992	77500	179	Poly Propylene Bags	32 Looms
151	Rag Lines (Pvt) Ltd. Raiwind Manga Road		Poly Propylene Bags	1997	12500	C	Poly Propylene Bags	3 Looms
152	Raj (Pvt) Ltd. Raiwind Manga Road Raiwind	5397311	Poly Propylene Bags	1998	37000	109	Poly Propylene Bags	20 Looms
153	Riazuddin Poly Packages (Pvt) Ltd. 5 Km Raiwind Manga Road	5392112	Poly Propylene Bags	1991	34500	63	Poly Propylene Bags	50 Looms
154	Sameer Polypropylene Products 3-Km.Rohidrain Raiwind Manga Road	0300-8880557	Poly Propylene Bags	1999	25000	60	Poly Propylene Bags	18 Looms
155	Taj Industries Pvt. Ltd. 46 K.M, Multan Road Bhai Pheru		Poly Propylene Bags	1989	21989	29	Poly Propylene Bags	1800 M.Tons
156	Zaib Polypropylene Products (Pvt)Ltd. 45 Km. Multan Road	0301-4172835	Poly Propylene Bags	1993	50000	85	Poly Propylene Bags	54 Looms

Sr. No.	Name / Address of unit	Phone No. / Website	Industry	Estb. Year	Investment (Th.Rs.)	Emp	Product	Annual Installed Capacity
157	Kohinoor Fibres Ltd. 6 Km Manga Raiwind Road	0342-5354128	Polyester Yarn	1993	239682	C	Polyester Yarn	5000 M.Tons
158	Saaz Gold Industries (Pvt) Ltd. Sarai Cheemba Near Fawad Textile Mills 49 Km Multan Road	5848054-5	Polyester Yarn	2002	4200	17	Polyester Yarn	1200 M.Tons
159	Asia Poultry Feeds (Pvt) Ltd. (Unit 2) 60 Km Multan Road Bhair Pheru	4512271-2	Poultry Feed	1993	96000	24	Poultry Feed	144000 M.Tons
160	K & N'S Feed 6 Km Raiwind Manga Road Raiwind	5392708-14. 5392707	Poultry Feed	1996	84355	5	Poultry Feed	350000 M.Tons
161	Kashmir Feeds (Pvt) Ltd. 46-Km Multan Road	4540278	Poultry Feed	1997	90000	76	Poultry Feed	150000 M.Tons
162	Lahore Feeds Ltd. 43 Km. Multan Road	5384248, 5384249	Poultry Feed	1986	19000	46	Poultry Feed	225000 M.Tons
163	Sharifa Poultry Feeds (Pvt) Ltd. Kot Radha Kishan Changa Manga Road	5384879	Poultry Feed	2004	47000	27	Poultry Feed	15000 M.Tons
164	Sutlej Feed Ltd. 42 Km Multan Road	5383509	Poultry Feed	2005	10000	5	Poultry Feed	120000 M.Tons
165	Century Power Generation Ltd. 60 Km Multan Road Jumber Khurd	4442336 www.century.com.pk	Power Generation	1996	300000	60	Electricity	8 Mw

Sr. No.	Name / Address of unit	Phone No. / Website	Industry	Estb. Year	Investment (Th.Rs.)	Emp	Product	Annual Installed Capacity
166	Chakwal Electric Supply Company Ltd. 49-K.M Multan Road	5830872-5832125	Power Generation	1995	524192	100	Electricity	17.72 Mw
167	Din Power Ltd., 60-Km. Multan Road Jamber Kalan		Power Generation	1998	160000	85	Electricity	5.3 Mw
168	Ellahi Electric Co. Limited 63-Km. Manga Mandi Raiwind Road	5383773-6	Power Generation	1996	125000	43	Electricity	4.6 Mw
169	Genertech Pakistan Ltd. 49 Km Multan Road Bhai Pheru	4542273	Power Generation	1990	443722	78	Electricity	5.3 Mw
170	Ghazi Power Ltd. 46 Km Multan Road Dina Nath	4540406	Power Generation	1994	169027	121	Electricity	10.41 Mw
171	Gulistan Power Generations Ltd. 63 Km Multan Road Jumber Khurd	5388456	Power Generation	1993	144032	43	Electricity	4.6 Mw
172	Kohinoor Energy Ltd. 3 Km Roohi Drain Road, Near Tabligi Ijtimah	5392317-8 www.kel.com.pk	Power Generation	1994	4452	153	Electricity	120 Mw
173	Kohinoor Weaving Mills Ltd, 8 Km Manga Raiwind Road	5391941-5	Power Generation	1993	42500	56	Electricity	25.2 Mw

Sr. No.	Name / Address of unit	Phone No. / Website	Industry	Estb. Year	Investment (Th.Rs.)	Emp	Product	Annual Installed Capacity
174	Sapphire Power Generation 64 Km Multan Road Jamber Khurd Phool Nagar	4731014	Power Generation	1994	150000	72	Electricity	21.2 Mw
175	Ice Pac Ltd. 6.5 Km Manga Raiwind Road	5383644-6 www.icepac.com.pk	Preservation Of Fruit /Vegetable	1989	20000	25	Vegetables	1000 M.Tons
176	Hayat Vinyl (Pvt) Ltd. 43 Km Multan Road Manga Mandi		Pvc Pipe	1991	6500	C	Pvc Pipe	250 Rft
177	Lucky Plastic Industries (Pvt) Ltd. 48.5 Km Multan Road Chunian	04943-9363-4	Pvc Pipe	1994	6000	20	Pvc Pipe	1000 M.Tons
178	Abdul Rashid & Brothers Rice Mills 27 Km Depalpur Road	2791692	Rice Mills	1996	31000	11	Rice	1Sheller
179	Ali Imran Rice Mills Raiwind Manga Road	5384011-2	Rice Mills	1999	8000	35	Rice	1 Sheller
180	Arooj Rice Mills 48 Km Kasur Depalpur Road Alla Abad		Rice Mills	2004	42500	14	Rice	1 Sheller
181	Attique Aziz Rice Mills Bye Pass Chowk Chunian Cantt	311786, 311984	Rice Mills	2005	43500	21	Rice	1Sheller
182	Baba Farid Rice Sheller 6 Km Chunian Road Alla Abad	492475216 4	Rice Mills	2000	57500	13	Rice	1 Sheller

Sr. No.	Name / Address of unit	Phone No. / Website	Industry	Estb. Year	Investment (Th.Rs.)	Emp	Product	Annual Installed Capacity
183	Hamad Rice Mills (Pvt) Ltd. Raiwind Manga Road	5384524	Rice Mills	2002	25000	48	Rice	2 Sheller
184	Iqra Rice Mills Habibabad Road Chunian	4000820	Rice Mills	2001	20000	10	Rice	2 Sheller
185	Kashif Rice Mills Chunian Road Pattoke	4421608	Rice Mills	1990	1100	21	Rice	1 Sheller
186	Mafeh Rice Mills Ltd. Lahore Road Raiwind	5390321	Rice Mills	2001	35000	17	Rice	1 Sheller
187	Punjab Rice Mills Pakhoki Depalpur Road	2792132	Rice Mills	1983	25000	14	Rice	1 Sheller
188	Safa Rice Mills Village Noorpur Jattan 3 Km. Theng More		Rice Mills	1987	850	C	Rice	1 Sheller
189	Sk Ayyub Rice Mills Alla Abad	451170	Rice Mills	1994	5000	18	Rice	1Sheller
190	Suleman Rice Mills Chunian Road Alla Abad	451080	Rice Mills	2004	65000	18	Rice	1 Sheller
191	H.K. Industries 347/1, Manga Roadrohinalah Raiwind	04951-5393380	Rubber Products	2001	300	15	Rubber Sheet	15 Th. Meter
192	Ahmad Sizing Industry Karkhana Mor Wala		Sizing Of Yam	2002	13875	15	Sizing Of Yam	50 M.Tons
193	Al Saeed Sizing Railway Rd., Kasur	2762730	Sizing Of Yam	1978	2500	18	Sizing Of Yam	500 M.Tons
194	Al-Akbar Sizing Haji Farid Road	2761688	Sizing Of Yam	1996	600	8	Sizing Of Yam	3 M.Tons

Sr. No.	Name / Address of unit	Phone No. / Website	Industry	Estb. Year	Investment (Th.Rs.)	Emp	Product	Annual Installed Capacity
195	Ali Sizing Industry Kot Ferozpur Road	2732268	Sizing Of Yam	1996	2100	17	Sizing Of Yam	150 M.Tons
196	Amira Textiles Pvt. Ltd. 2/3 Km., Raiwind Manga Rd Raiwind, Kasur		Sizing Of Yam	1992	454560	C	Sizing Of Yam	9000 M.Tons
197	Awami Cotton Sizing Near Railway Station	2762730	Sizing Of Yam	1975	71000	13	Sizing Of Yam	1022 M.Tons
198	Bilal Kiran Sizing, Railway Road, Ada Lilyani	2772539	Sizing Of Yam	2005	945	16	Sizing Of Yam	430 M.Tons
199	Bilal Sizing Adda Lalyani	2772069	Sizing Of Yam	1958	33500	12	Sizing Of Yam	600 M.Tons
200	Bismillah Sizing Nafees Colony	2763575-6	Sizing Of Yam	1990	33500	9	Sizing Of Yam	936 M.Tons
201	Faran Sizing (Data Sizing) Karkhana Mor Wala		Sizing Of Yam	1980	2500	C	Sizing Of Yam	300 M.Tons
202	Hamza Akbar Sizing Haji Farid Road	2761688	Sizing Of Yam	2001	5550	13	Sizing Of Yam	60 M.Tons
203	Itefaq Sizing Haji Farid Road	276991	Sizing Of Yam	1980	875	9	Sizing Of Yam	338 M.Tons
204	Mehran (Data) Sizing Haji Fareed Road Kasur		Sizing Of Yam	1990	2850	C	Sizing Of Yam	550 M.Tons
205	Mujahid Sizing Industries Haji Farid Road	2772913	Sizing Of Yam	2004	17000	11	Sizing Of Yam	152 M.Tons
206	National Sizing Bassir Pura, Kasur	2771467	Sizing Of Yam	1994	2750	9	Sizing Of Yam	50 M.Tons

Sr. No.	Name / Address of unit	Phone No. / Website	Industry	Estb. Year	Investment (Th.Rs.)	Emp	Product	Annual Installed Capacity
207	Pakistan Sizing Shahbaz Khan Road	2764181	Sizing Of Yam	1999	415000	11	Sizing Of Yam	50 M.Tons
208	Prince Cotton Sizing Industries Capton Naseem Shaheed Road	2771154	Sizing Of Yam	1988	2500	12	Sizing Of Yam	500 M.Tons
209	Yasin Sizing Shahbaz Khan Road.		Sizing Of Yam	1985	1075	C	Sizing Of Yam	650 M.Tons
210	Rajjee (Pvt) Ltd. O.9 Km Off Raiwind Manga Road		Specialized Textile	1995	22944	C	Fusible Inter Lining	8000 M.Tons
211	Brother Sugar Mills Ltd. Kasur Road Chunian	049-4310215-6	Sugar	1988	197010	954	Sugar	8500 Tcd
212	Makka Sugar Mills, Kot Radha Kishan	042-35393045, 35390922, Fax: 042-35390921	Sugar	1997	305000	186	Sugar	1500 Tcd
213	Pattoki Sugar Mills Ltd. 77 Km Multan Road Pattoki	049-4421873, 4421973	Sugar	1975	640115	832	Sugar	3000 Tcd
214	Ihsan Sons (Pvt) Ltd. Dars Road Off Raiwand Manga Road	5391158	Surgical Cotton / Bandages	1978	369777	433	Surgical Cotton	12000 M.Tons
215	Surjical Textiles (Pvt) Ltd. 70 Km. Lahore Multan Road Pattoki	7592821	Surgical Cotton / Bandages	1989	16500	30	Gaus Swebs	600 Th.Meters

Sr. No.	Name / Address of unit	Phone No. / Website	Industry	Estb. Year	Investment (Th.Rs.)	Emp	Product	Annual Installed Capacity
216	Cres Pak Medical Industries (Pvt) Ltd. Raiwind Manga Road	5384498	Syringes	2004	26000	77	Syringes	500 Million Nos.
217	Lahore Medical Instruments (Pvt) Ltd. 48 Km. Lahore Kasur Road	2002092	Syringes	1992	24000	530	Syringes	1860 Million Nos.
218	Lifeline Enterprises (Pvt) Ltd. 4 Km Raiwind Manga Road	5391887	Syringes	1992	23600	30	Syringes	9000000 Nos.
219	Ravi Medical Supplies (Pvt) Ltd. Pajeeian Road Raiwind	5391001	Syringes	1992	24000	118	Syringes	100 Million Nos.
220	Abbas Tannery Niaz Nagar	2771474, 2764374	Tannery	1980	2500	10	Finished Leather	300 Th.Sq.Ft.
221	Abdul Jabbar Tannery Kot Moulvi Abdul Qadir	2770865	Tannery	1987	2600	10	Finished Leather	1000 Th.Sqft
222	Abdul Majeed Tannery St.No.5 Niaz Nagar		Tannery	1998	550	6	Leather	500 Sq.Ft.
223	Abdul Rehman Tannery Din Garh		Tannery	1987	500	5	Finished Leather	200 Th. Sq. Ft.
224	Abdul Shakoortannery Mangal Mandi	2761776	Tannery	1995	3900	11	Upper Leather	7000 Th.Sqft
225	Abid Razaq Tannery Niaz Nagar	2761334	Tannery	1985	3200	7	Wet Blue	35 Th.Sqft
226	Adeel Tannery Niaz Nagar		Tannery	1990	450	6	Finished Leather	200 Th. Sq. Ft.

Sr. No.	Name / Address of unit	Phone No. / Website	Industry	Estb. Year	Investment (Th.Rs.)	Emp	Product	Annual Installed Capacity
227	Afaq Tannery K.M. Ferozepur Road		Tannery	1995	480	5	Leather	400 Sq.Ft.
228	Aftab Sharafat Hussain Pindi Tannery Niaz Nagar		Tannery	1992	650	6	Finished Leather	250 Th. Sq. Ft.
229	Aftab Tanneries Niaz Nagar		Tannery	1985	600	5	Leather	600 Th. Sq.Ft.
230	Afzal Shiwal Tannery Soonater Trading Co. (Mechanical Store) Mangle Mandi Road		Tannery	1995	750	6	Finished Leather	150 Th. Sq. Ft.
231	Afzal Tanneries Niaz Nagar		Tannery	1994	3300	13	Finished Leather	500 Th.Sqft
232	Ahmad Ali Tanneries (Master Leather) Niaz Nagar	2760120	Tannery	1994	900	5	Wet Blue Hides	200 Th. Sq.Ft
233	Ahmad Shehzad Tannery Niaz Nagar	2762903	Tannery	1990	1600	20	Finished Leather	1380 Th.Sqft
234	Ahmad Tannery Din Garh		Tannery	1985	600	10	Finished Leather	200 Th. Sq.Ft
235	Ahmad Tannery Mangal Mandi	2762550	Tannery	1984	3400	12	Finished Leather	250 Th.Sq.Ft.
236	Ahmad Tannery Niaz Nagar		Tannery	1995	2700	12	Finished Leather	700 Th.Sqft
237	Ahmad Tariq Tannery Niaz Nagar	2762774	Tannery	2003	6500	9	Wet Blue	75 Th.Sq.Ft.

Sr. No.	Name / Address of unit	Phone No. / Website	Industry	Estb. Year	Investment (Th.Rs.)	Emp	Product	Annual Installed Capacity
238	Ajmal Shaheen Tannery Chowk Niaz Nagar		Tannery	1997	3600	8	Finished Leather	1000 Th.Sqft
239	Akbar Siddiq Tannery Niza Nagar	2772835	Tannery	1986	800	15	Finished Leather	1200 Th.Sqft
240	Akbar Tannery 6-K.M Pattoki Road		Tannery	1988	2800	9	Finished Leather	950 Th.Sqft
241	Akbar Tannery Niaz Nagar		Tannery	1986	3800	12	Wet Blue	700 Th.Sqft
242	Akhtar Tannery (li)		Tannery	1980	450	7	Finished Leather	150 Th. Sq.Ft.
243	Akram Ali Japan Tannery Opp: Dera Khurshid Mehmood		Tannery	1993	550	5	Leather	500 Sq.Ft.
244	Akram Tanneries Chak Niaz Nagar	2760716	Tannery	1995	3500	14	Finished Leather	400 Th. Sq.Ft
245	Akram Tannery (Unit No.1) Chowk Niaz Nagar	2760715	Tannery	1994	2900	9	Finished Leather	1800 Th.Sqft
246	Akram Tannery (Unit No.2) Chowk Niaz Nagar		Tannery	1980	6500	9	Finished Leather	975 Th.Sqft
247	Al Ahmed Tannery Niaz Nagar	276402	Tannery	1986	3200	10	Finished Leather	1000 Th.Sqft
248	Al Habib Tannery Mushtaq Nagar Kasur		Tannery	1998	3800	10	Finished Leather	800 Th.Sqft
249	Al Hafiz Tanneries Niaz Nager	2764133	Tannery	1990	2000	12	Finished Leather	700 Th.Sqft
250	Al Khair Tannery Niaz Nagar		Tannery	2005	7350	12	Wet Blue	500 Th.Sqft

Sr. No.	Name / Address of unit	Phone No. / Website	Industry	Estb. Year	Investment (Th.Rs.)	Emp	Product	Annual Installed Capacity
251	Al Mubbarak Tannery Niaz Nagar	2770459	Tannery	1997	1600	6	Finished Leather	650 Th. Sq.Ft
252	Al Mushtaq Tannery Mushtaq Nagar		Tannery	1988	2700	17	Finished Leather	1100 Th.Sqft
253	Al Muslim Tannery Niaz Nagar		Tannery	1995	33	13	Finished Leather	160 Th.Sqft
254	Al Noor Tannery (Unit No.1) Niaz Nagar		Tannery	1996	7100	16	Finished Leather	997 Th.Sqft
255	Al Noor Tannery (Unit No.2) Niaz Nagar	2761749	Tannery	1996	6800	13	Wet Blue	1100 Th.Sqft
256	Al-Amedad Tannery Niaz Nagar		Tannery	1986	425	8	Finished Leather	250 Th. Sq. Ft.
257	Aleem Tannery Niaz Nagar	2762442	Tannery	1995	3000	12	Finished Leather	1000 Th.Sqft
258	Alfa Leather Industries Din Garh		Tannery	1995	2500	20	Leather	300 Th. Sq.Ft
259	Ali Amam Tannery Din Garh	276402	Tannery	1985	620	7	Finished Leather	300 Th. Sq. Ft.
260	Ali Mahmood (Bhola) Tanneries Din Garh		Tannery	1981	2800	10	Finished Leather	900 Th.Sqft
261	Ali Muhammad (Bhola) Tanneries Din Garh		Tannery	1981	2000	5	Leather	150 Th. Sq.Ft.
262	Ali Muhammad Tanneries Niaz Nagar		Tannery	1984	800	5	Leather	150 Th. Sq.Ft.
263	Ali Tannery Niaz Nagar		Tannery	1995	2700	5	Finished Leather	500 Th.Sqft

Sr. No.	Name / Address of unit	Phone No. / Website	Industry	Estb. Year	Investment (Th.Rs.)	Emp	Product	Annual Installed Capacity
264	Alkaram Tannery Niaz Nagar		Tannery	1991	422	7	Finished Leather	175 Th.Sq.Ft.
265	Alkhur Tannery St.No.5 Niaz Nagar		Tannery	1996	500	5	Leather	450 Sq.Ft.
266	Allah Nawaz Tannery St.No.2 Niaz Nagar		Tannery	1996	2600	15	Finished Leather	850 Th.Sqft
267	Allah Wasaya Tannery Niaz Nagar	2764195	Tannery	1986	100	10	Finished Leather	200 Th.Sq.Ft.
268	Al-Mubarik Tannery & Co Niaz Nagar	2059/7617 49	Tannery	1988	2500	15	Finished Leather	500 Th. Sq.Ft
269	Al-Mushtaq Tannery Mushtaq Nagar		Tannery	1988	1100	12	Finished Leather	300 Th. Sq. Ft.
270	Al-Muslim Tanneries Niaz Nagar		Tannery	1995	1500	6	Leather	200 Th. Sq.Ft
271	Al-Noor Tanneries Niaz Nagar		Tannery	1997	1400	10	Leather	200 Th. Sq.Ft
272	Altaf Tanneries Niaz Nagar	2764305	Tannery	1996	3700	14	Finished Leather	900 Th.Sqft
273	Amanat Tanneries Niaz Nagar		Tannery	1986	3700	11	Finished Leather	900 Th.Sqft
274	Ameen Bashir Tannery Din Garh	2771501	Tannery	1980	5300	15	Finished Leather	600 Th.Sqft
275	Amin Hussain Tannery St.No.5 Niaz Nagar		Tannery	1998	540	6	Leather	500 Sq.Ft.
276	Amin Tanneries Kot Maulvi Abdul Qadir		Tannery	1985	5800	C	Finished Leather	1100 Th.Sqft

Sr. No.	Name / Address of unit	Phone No. / Website	Industry	Estb. Year	Investment (Th.Rs.)	Emp	Product	Annual Installed Capacity
277	Amin Tannery Niaz Nagar		Tannery	1980	1000	C	Leather	150 Th. Sq.Ft.
278	Amjad Tanning Works Niaz Nagar	2772075	Tannery	2001	1560	7	Finished Leather	700 Th.Sqft
279	Arfa Tannery Din Garh		Tannery	1984	900	9	Finished Leather	500 Th. Sq. Ft.
280	Arshad Nazir & Co. Salmat Pura	2760762	Tannery	1980	2400	15	Leather	400 Th. Sq.Ft
281	Arshad Pehaleen Tannery St.No.1 Niaz Nagar		Tannery	1998	500	5	Leather	480 Sq.Ft.
282	Asad Tanneries Niaz Nagar	2761246	Tannery	1990	1500	5	Leather	150 Th. Sq.Ft
283	Asgar Sharif Tannery Niaz Nagar		Tannery	1995	5200	12	Finished Leather	775 Th.Sqft
284	Ashfaq Leather Merchant Niaz Nagar	2760502	Tannery	1985	6400	11	Finished Leather	945 Th.Sqft
285	Ashiq Tanneries Niaz Nagar		Tannery	1988	20	12	Leather	600 Th. Sq.Ft.
286	Ashrif Bhulla Tannary Niaz Nagar		Tannery	1987	325	6	Finished Leather	75 Th.Sq.Ft.
287	Asif Industry (Pvt) Ltd. Vill. Khara		Tannery	1990	7000	42	Finished Leather	1100 Th.Sqft
288	Ashad M. Siddique Tannery Kot Moulvi Abdul Qadir Kashur		Tannery	1997	500	C	Leather	450 Sq.Ft.
289	Azam Haleem Tannery Niaz Nagar	2764200	Tannery	1997	1850	5	Finished Leather	500 Th.Sqft

Sr. No.	Name / Address of unit	Phone No. / Website	Industry	Estb. Year	Investment (Th.Rs.)	Emp	Product	Annual Installed Capacity
290	Azeem Tanneries Din Garh		Tannery	1980	1100	5	Leather	200 Th. Sq.Ft
291	Aziz Tannery Kot Moulvi Abdul Qadir		Tannery	1983	2400	16	Finished Leather	500 Th.Sqft
292	Baba Allah Bakhsh Tannery Niaz Nagar		Tannery	1985	1200	C	Finished Leather	75 Th.Sq.Ft.
293	Badsha Tanneries Kot Moulvi Abdul Qadir		Tannery	1984	1300	12	Finished Leather	600 Th.Sqft
294	Bakhsh And Sons Tannery 8 Km Ferozepur Road		Tannery	1997	8500	7	Upper Leather	1100 Th.Sqft
295	Bali Tanneries Niaz Nagar		Tannery	1996	550	5	Leather	600 Th. Sq.Ft.
296	Barkat Maseh Tanneries Niaz Nagar	2761383	Tannery	1990	130	5	Wet Blue Hides	100 Th. Sq.Ft
297	Barkat Tannery Mangal Mandi		Tannery	1981	7650	15	Wet Blue	500 Th.Sqft
298	Bashir Tannery Chowk Niaz Nagar		Tannery	2004	2100	6	Split Leather	1000 Th.Sqft
299	Bata Tanneries Din Garh		Tannery	1990	800	C	Leather	150 Th. Sq.Ft.
300	Bilal Tanneries Niaz Nagar	2762689	Tannery	1992	3700	9	Finished Leather	500 Th.Sqft
301	Boghdad Tanneries Kot Moulvi Abdul Qadir	276078	Tannery	1980	3600	5	Finished Leather	600 Th.Sqft
302	Buksh & Son 8 K.M. Ferozepur Road		Tannery	1997	500	5	Leather	500 Sq.Ft.

Sr. No.	Name / Address of unit	Phone No. / Website	Industry	Estb. Year	Investment (Th.Rs.)	Emp	Product	Annual Installed Capacity
303	Ch. Barkat Masih Tannery St.No.3 Niaz Nagar		Tannery	1996	680	9	Leather	500 Sq.Ft.
304	Ch. Barkat Tannery St.No.3 Niaz Nagar		Tannery	1996	3300	5	Finished Leather	700 Th.Sqft
305	Ch. Iqbal Ditta Tannery Din Garh		Tannery	1995	680	6	Leather	450 Sq.Ft.
306	Ch. Muhammad Ilyas Tannery Din Garh		Tannery	1990	425	6	Finished Leather	175 Th. Sq. Ft.
307	Ch. Saeed Tannery Barun Dingarh		Tannery	1996	525	7	Leather	500 Sq.Ft.
308	Chaki (Ch. Shafi Tannery Kot Moulvi Abdul Qadir		Tannery	1995	600	7	Leather	500 Sq.Ft.
309	Chawala Tanneries Din Garh	2762190	Tannery	1980	2500	25	Leather	174 Th. Sq.Ft
310	Classic Tannery Niaz Nagar	2762373	Tannery	1992	3500	11	Finished Leather	250 Th.Sq.Ft.
311	Classion Coaf Tannery Din Garh		Tannery	1990	1800	16	Finished Leather	800 Th. Sq. Ft.
312	D.R. Tannery Kot Malik Abdul Qadir	2762068	Tannery	1990	350	5	Upper Leather	100 Th. Sq.Ft
313	Dada Enterprises Ltd. Iqbal Nager Wadana	2716142-3	Tannery	1963	54000	133	Finished Leather	300 Th.Sq.Ft.
314	Dawood Khan Tannery Din Garh	0300-7456109	Tannery	1985	2900	12	Finished Leather	75 Th. Sq. Ft.

Sr. No.	Name / Address of unit	Phone No. / Website	Industry	Estb. Year	Investment (Th.Rs.)	Emp	Product	Annual Installed Capacity
315	Dynasty (Pvt) Ltd. 5.6 K.M.Ferozepur Road		Tannery	1994	11000	70	Finished Leather	450 Th. Sq. Ft.
316	Elahi Tannery Din Garh	2762051	Tannery	1984	8100	14	Finished Leather	975 Th.Sqft
317	Elahi Traders Din Garh		Tannery	1978	6500	27	Leather	650 Th. Sq.Ft
318	F.K. Tannery Mangal Mandi	2761413	Tannery	1984	6000	15	Wet Blue	60 Th.Sqft
319	Faisal Shahzad Tanneries Niaz Nagar	2762065	Tannery	2001	9500	11	Wet Blue	500 Th.Sqft
320	Faisal Tannery Niaz Nagar		Tannery	1985	3600	C	Finished Leather	800 Th.Sqft
321	Faizullah Khan Tannery St.No.3 Niaz Nagar	2760694	Tannery	1995	3900	16	Finished Leather	850 Th.Sqft
322	Fayyaz Ghani Tannery Niaz Nagar	2771057	Tannery	1997	3000	12	Finished Leather	95 Th.Sqft
323	Fazal Hussain (Shafi Tannery Kot Maulvi Abdul Qadir	2763582	Tannery	1990	1200	20	Finished Leather	700 Th. Sq.Ft.
324	Fazal Karim Tanneries Niaz Nagar	2761413	Tannery	1990	2500	10	Leather	400 Th. Sq.Ft
325	Fazal Rehman Tannery Niaz Nagar		Tannery	1988	1200	6	Finished Leather	100 Th. Sq.Ft
326	Fazal Shahzad Tannery Niaz Nagar	2762065	Tannery	1986	1605	10	Finished Leather	250 Th. Sq.Ft
327	Fazal Tanneries Niaz Nagar		Tannery	1982	2098	C	Leather	200 Th. Sq.Ft
328	Fazal Ur Rehman Tannery Niaz Nagar	2761321	Tannery	1988	4500	11	Wet Blue	45 Th.Sqft

Sr. No.	Name / Address of unit	Phone No. / Website	Industry	Estb. Year	Investment (Th.Rs.)	Emp	Product	Annual Installed Capacity
329	Fazal-Ur-Rehman & Bros Leather Merchant Niaznagar	2761275	Tannery	1988	155	7	Leather	100 Th. Sq.Ft
330	Ferooz Din Tannery Din Garh		Tannery	1985	327	5	Finished Leather	150 Th. Sq. Ft.
331	Ferzand Tanneries Niaz Nagar	2761334	Tannery	1988	270	5	Split Leather	150 Th. Sq.Ft
332	Fiaz Ghani Tanneries Niaz Nagar		Tannery	1995	2500	C	Chrome Leather	250 Th. Sq.Ft
333	Fine Tannery Chowk Niaz Nagar		Tannery	2000	6400	C	Finished Leather	1100 Th.Sqft
334	G.A. Traders Din Garh		Tannery	1993	5300	C	Finished Leather	975 Th.Sqft
335	G.N. Brothers Tannery Mangal Mandi Younis Nagar	0300-6587321	Tannery	1996	2200	12	Finished Leather	800 Th.Sqft
336	G.R. Tanneries Niaz Nagar		Tannery	1993	1200	C	Finished Leather	200 Th. Sq.Ft
337	Ghausia Tanneries Mangal Mandi		Tannery	1996	6200	12	Finished Leather	75 Th.Sq.Ft.
338	Ghulam Ahmad Tannery Mangal Mandi		Tannery	1990	5400	14	Finished Leather	600 Th.Sqft
339	Ghulam Farid Tanneries Din Garh	2760975	Tannery	1990	3000	25	Wet Blue Skin , Leather	150 Th. Sq.Ft.
340	Ghulam Hussain Munir Hussain Tannery Niaz Nagar		Tannery	1987	1600	9	Finished Leather	300 Th.Sq.Ft.

Sr. No.	Name / Address of unit	Phone No. / Website	Industry	Estb. Year	Investment (Th.Rs.)	Emp	Product	Annual Installed Capacity
341	Ghulam Muhammad Khan Tannery Kot Maulvi Abdul Qadir		Tannery	1985	600	8	Finished Leather	175 Th. Sq. Ft.
342	Ghulam Mustafa And Brothers Tannery Niaz Nagar	2762455	Tannery	1995	3200	12	Finished Leather	250 Th.Sq.Ft.
343	Ghulam Mustafa Jut Tannery Mangal Hindi Road		Tannery	1996	875	7	Leather	450 Sq.Ft.
344	Glashier Tannery Din Garh		Tannery	1992	6000	20	Finished Leather	1200 Th.Sqft
345	Good Luck Tanneries Niaz Nagar	2761662	Tannery	1995	1870	10	Leather Cloth	250 Th. Sq.Ft
346	Gousia Saleem Tanneries Niaz Nagar		Tannery	1994	1500	5	Leather Cloth	150 Th. Sq.Ft
347	Grac/Baig Tannery Niaz Nagar		Tannery	1992	800	10	Finished Leather	400 Th.Sq.Ft.
348	Great Tannery Younis Nagar	2761675	Tannery	1996	900	10	Leather	550 Sq.Ft.
349	Gujrat Tanneries Mangal Mandi	2770440	Tannery	1996	14	6	Finished Leather	80 Th.Sqft
350	Gulistan Tannery Din Garh		Tannery	1980	1700	10	Leather Cloth	200 Th. Sq.Ft
351	Gulo Tannery Niaz Nagar		Tannery	1990	2500	11	Finished Leather	400 Th.Sq.Ft.
352	Gulzar Tanneries Din Garh		Tannery	1987	700	5	Leather	450 Th. Sq.Ft.
353	Gulzar Tanneries Niaz Nagar		Tannery	1990	800	5	Leather	300 Th. Sq.Ft

Sr. No.	Name / Address of unit	Phone No. / Website	Industry	Estb. Year	Investment (Th.Rs.)	Emp	Product	Annual Installed Capacity
354	H Sadar Ali, Akhtar Ali (Pvt) Ltd. Niaz Nagar	2772407, 2772413	Tannery	1942	320491	82	Finished Leather	1500 Th.Sqft
355	H. Ghulam Hussain Tanneries Niaz Nagar		Tannery	1995	2200	8	Leather	250 Th. Sq.Ft
356	H. Khalid Tannery Niaz Nagar		Tannery	1980	3800	9	Finished Leather	900 Th.Sqft
357	H. Rashid And Sons Din Garh Kasur		Tannery	1983	350	7	Chrome Leather	100 Th. Sq.Ft
358	H. Riaz Tanneries Din Garh		Tannery	1990	1500	5	Wet Blue Hides	100 Th. Sq.Ft
359	Habib Afzal Tannery Mangal Mandi	2720351	Tannery	1992	2500	11	Wet Blue	700 Th.Sqft
360	Haffiz Brothers Tannery Younas Nagar	2770308	Tannery	1995	2500	7	Wet Blue	500 Th.Sqft
361	Hafiz Brothers Niaz Nagar	2770308	Tannery	1995	6000	8	Finished Leather	200 Th. Sq.Ft
362	Hafiz Brothers Tannery Mustfa Nagar		Tannery	1987	1100	12	Finished Leather	350 Th. Sq. Ft.
363	Hafiz Tannery 12 Km Kasur Ferozepur Road	2716175	Tannery	1998	92500	60	Finished Leather	1500 Th.Sqft
364	Haider Muneer Tannery Niaz Nagar		Tannery	1993	500	6	Finished Leather	175 Th.Sq.Ft.
365	Haji Abdul Shakoore Tannery Mangle Mandi		Tannery	1990	1250	11	Finished Leather	300 Th. Sq. Ft.
366	Haji Abdullah Tannery Kot Moulvi Abdul Qadir		Tannery	1996	500	6	Leather	400 Sq.Ft.

Sr. No.	Name / Address of unit	Phone No. / Website	Industry	Estb. Year	Investment (Th.Rs.)	Emp	Product	Annual Installed Capacity
367	Haji Ahmad Tannery Kot Moulvi Abdul Qadir	2770865	Tannery	1986	2100	10	Finished Leather	48 Th.Sqft
368	Haji Altaf Karachi Tebi Cumbowan		Tannery	1990	2000	19	Finished Leather	600 Th. Sq. Ft.
369	Haji Amin Salam Tannery Mangle Mandi		Tannery	1989	850	7	Finished Leather	175 Th. Sq. Ft.
370	Haji Amir Ahmad Tannery Chowk Mangal Mandi		Tannery	1985	4500	9	Finished Leather	40 Th.Sqft
371	Haji Ghulam Hussain/Bashir Ahmed Tannery Niaz Nagar	2771113	Tannery	1985	3000	7	Finished Leather	300 Th.Sq.Ft.
372	Haji Haleem Tannery Niaz Nagar	2764200	Tannery	1995	700	8	Leather	450 Sq.Ft.
373	Haji Ibrahim Tannery Kot Maulvi Abdul Qadir		Tannery	1985	700	8	Finished Leather	200 Th. Sq. Ft.
374	Haji Khalid Tannery Bakar Mandi		Tannery	1980	3400	10	Finished Leather	700 Th.Sqft
375	Haji Khushi Muhammad Kumhar Tannery Niaz Nagar		Tannery	1993	600	5	Finished Leather	225 Th. Sq. Ft.
376	Haji Khushi Muhammad Masood Ahmad Tannery Kot Moulvi Abdul Ghaffar	2762935	Tannery	1975	6600	14	Finished Leather	58 Th.Sqft

Sr. No.	Name / Address of unit	Phone No. / Website	Industry	Estb. Year	Investment (Th.Rs.)	Emp	Product	Annual Installed Capacity
377	Haji Khushi Muhammad Tanneries Kot Moulvi Abdul Qadir	2762935	Tannery	1975	800	8	Leather Cloth	150 Th. Sq.Ft
378	Haji Khushi Muhammad Tannery (Unit No.4) Niaz Nagar	2762935	Tannery	1985	4400	15	Finished Leather	1000 Th.Sqft
379	Haji M. Ashiq Tannery Gujrati Mangai Minda		Tannery	1995	800	8	Leather	450 Sq.Ft.
380	Haji Maqsood Tannery Niaz Nagar	2762935	Tannery	2000	2900	18	Finished Leather	500 Th.Sqft
381	Haji Muhammad Aslam Niaz Nagar		Tannery	1980	4000	14	Leather	350 Th. Sq.Ft
382	Haji Muhammad Ishaq Tannery Mushtaq Nagar		Tannery	1986	450	7	Finished Leather	75 Th. Sq. Ft.
383	Haji Muhammad Munir Ahmad Tannery Mangle Mandi Road		Tannery	1988	700	8	Finished Leather	300 Th. Sq. Ft.
384	Haji Mukhtar Tannery Kot Moulvi Abdul Qadir		Tannery	1996	1900	8	Finished Leather	500 Th.Sqft
385	Haji Munir Ahmad Tannery Mangal Mandi	2760354	Tannery	1985	5200	13	Finished Leather	45 Th.Sqft
386	Haji Nazir Tanneries Niaz Nagar		Tannery	1920	500	5	Leather	150 Th. Sq.Ft.

Sr. No.	Name / Address of unit	Phone No. / Website	Industry	Estb. Year	Investment (Th.Rs.)	Emp	Product	Annual Installed Capacity
387	Haji Noor Ahmad Tannery Din Garh		Tannery	1994	850	8	Finished Leather	300 Th. Sq. Ft.
388	Haji Noor Tannery (Unit No.2) Niaz Nagar		Tannery	1995	7400	16	Finished Leather	1100 Th.Sqft
389	Haji Sadar Ali Haji Akhtar Ali Tannery (Pvt) Ltd. (Unit No.2) Din Garh	2772413	Tannery	1995	71136	60	Finished Leather	130 Th.Sqft
390	Haji Shoaab Ullah Khan Tannery Din Garh		Tannery	1986	400	5	Finished Leather	175 Th. Sq. Ft.
391	Haji Tariq Khalid Tannery Niaz Nagar		Tannery	1990	3600	13	Finished Leather	250 Th.Sq.Ft.
392	Haji Usman Tannery Kot Moulvi Abdul Qadir		Tannery	1995	680	5	Leather	450 Sq.Ft.
393	Haji Waris Tannery Mangle Mandi		Tannery	1991	3400	11	Finished Leather	100 Th. Sq.Ft
394	Haji Wasis Niaz Nagar		Tannery	1994	300	5	Leather	150 Th. Sq.Ft
395	Hamid Rashid Tannery Din Garh		Tannery	1982	250	5	Finished Leather	75 Th. Sq. Ft.
396	Hanif Tanneries Din Garh		Tannery	1995	1360	8	Leather	200 Th. Sq.Ft
397	Hanif Tannery Mangle Mandi Road		Tannery	1988	550	6	Finished Leather	175 Th. Sq. Ft.
398	Haseeb Afzal Tanneries Niaz Nagar	2761650	Tannery	1991	570	12	Leather	350 Th. Sq.Ft

Sr. No.	Name / Address of unit	Phone No. / Website	Industry	Estb. Year	Investment (Th.Rs.)	Emp	Product	Annual Installed Capacity
399	Haseem Afzal Tannery Mangle Mandi		Tannery	1988	1650	18	Finished Leather	500 Th. Sq. Ft.
400	Hashmat Ali Tannery Mushtaq Nagar		Tannery	1990	6400	15	Finished Leather	350 Th. Sq.Ft
401	Hayyat Tannery Din Garh		Tannery	1988	6000	5	Finished Leather	1100 Th.Sqft
402	H-Sadar Ali Akhtar Ali (Pvt) Ltd. Dingarh Unit-I Niaz Nager Unit-li		Tannery	1942	124462	11	Chrome Leather	15000 Th. Sq.Ft
403	Hushmat Ali Tannery Mushtaq Nagar		Tannery	1990	1200	9	Finished Leather	300 Th. Sq. Ft.
404	Ibrahim Tanneries Kot Maulvi Abdul Qadir	662621	Tannery	1985	3100	10	Finished Leather	95 Th.Sqft
405	Iqbal Brothers Tannery Niaz Nagar		Tannery	1975	4100	9	Finished Leather	300 Th.Sq.Ft.
406	Iqbal Tanneries Niaz Nagar		Tannery	1985	3200	13	Finished Leather	100 Th. Sq.Ft
407	Ishaq Tannery Kot Moulvi Abdul Qadir		Tannery	1983	2400	11	Finished Leather	500 Th.Sqft
408	Ittefaq Tannery Kot Moulvi Abdul Qadir	2762015	Tannery	1989	2400	8	Finished Leather	100 Th. Sq.Ft
409	Ittehad Tannery Din Garh		Tannery	1985	480	7	Finished Leather	200 Th. Sq. Ft.
410	Jamila Tannery Niaz Nagar	2763814	Tannery	1986	3200	10	Finished Leather	800 Th.Sqft

Sr. No.	Name / Address of unit	Phone No. / Website	Industry	Estb. Year	Investment (Th.Rs.)	Emp	Product	Annual Installed Capacity
411	Japan Tanneries Niaz Nagar	2773356	Tannery	1996	7300	11	Finished Leather	500 Th.Sqft
412	Javed Masih Tannery Mushtaq Nagar		Tannery	1987	6400	16	Finished Leather	175 Th. Sq.Ft.
413	Jumah Khan Tannery Din Garh		Tannery	1983	300	7	Finished Leather	175 Th. Sq. Ft.
414	Kamran Tannery Kot Moulvi Abdul Qadir	0300-6598900	Tannery	1983	6200	16	Wet Blue	49 Th.Sqft
415	Karachi Tannery Mangal Mandi		Tannery	2000	550	5	Chrome Leather	500 Th. Sq.Ft
416	Kasur Tannery Din Garh	2762172	Tannery	1995	7500	9	Finished Leather	600 Th.Sqft
417	Khadam Tannery Niaz Nagar		Tannery	1995	500	6	Finished Leather	150 Th.Sq.Ft.
418	Khadim Tanneries Niaz Nagar	2760564	Tannery	1990	2000	10	Finihsed Leather	600 Th.Sqft
419	Khalid Tannery Niaz Nagar		Tannery	1980	6000	12	Finished Leather	1050 Th.Sqft
420	Khawaja Tanneries Niaz Nagar	2762550	Tannery	1991	6800	13	Finished Leather	9000 Th.Sqft
421	Khushi Muhammad Tannery Mangal Mandi	2761563	Tannery	1975	5200	12	Finished Leather	55 Th.Sqft
422	Lahore Leather Craft Tannery Mangal Mandi		Tannery	1995	500	5	Leather	400 Sq.Ft.
423	Lal Hussain Tannery Kot Moulvi Abdul Qadir		Tannery	1995	500	6	Leather	400 Sq.Ft.

Sr. No.	Name / Address of unit	Phone No. / Website	Industry	Estb. Year	Investment (Th.Rs.)	Emp	Product	Annual Installed Capacity
424	Lal Sajjad Tanneries Kot Maulana Abdul Qadir		Tannery	1972	1500	5	Leather	500 Th. Sq.Ft
425	Leader Tanneries Niaz Nagar	2761090	Tannery	1986	24500	36	Leather	2000 Th.Sqft
426	Leather Tannery-ii Circular Road Dingarh	2764663	Tannery	1995	3000	7	Finished Leather	800 Th.Sqft
427	London Tannery Niaz Nagar	2762758	Tannery	2004	3800	9	Finished Leather	800 Th.Sqft
428	M. Ashiq Zubair Tannery Younis Nagar		Tannery	1996	590	5	Leather	450 Sq.Ft
429	M. Manzoor Elahi Leather Works Circular Road Dingarh	2760324	Tannery	1998	750	6	Leather	550 Sq.Ft.
430	M. Usman Saleem Leather Works Din Garh	2763728	Tannery	2004	3800	7	Finished Leather	800 Th.Sqft
431	M.H. Bhutta Tannery Niaz Nagar	2760163	Tannery	1997	1200	5	Finished Leather	300 Th.Sq.Ft.
432	M.H. Tannery 8 Km Kasur Lahore Road	2716402	Tannery	2005	55000	40	Wet Blue	1000 Th.Sqft
433	M.Naeem Tannery Kot Moulvi Abdul Qadir		Tannery	1996	550	6	Leather	350 Sq.Ft.
434	Madina Tannery Din Garh		Tannery	1996	500	5	Leather	300 Sq.Ft.
435	Makah Tannery Main Road Dingarh		Tannery	1996	600	5	Leather	350 Sq.Ft.
436	Makkah Tannery Din Garh		Tannery	1990	422	6	Finished Leather	175 Th. Sq. Ft.

Sr. No.	Name / Address of unit	Phone No. / Website	Industry	Estb. Year	Investment (Th.Rs.)	Emp	Product	Annual Installed Capacity
437	Malik Brothers Tanneries Niaz Nagar	2760482	Tannery	1995	6000	14	Wet Blue Hides	120 Th.Sqft
438	Manzoor Elahi Tanneries Din Garh		Tannery	1992	1125	13	Upper Leather	500 Th. Sq.Ft
439	Manzoor Tannery Kot Maulvi Abdul Qadir		Tannery	1989	1550	13	Finished Leather	500 Th. Sq.Ft
440	Maqbool Ahmed Tanneries Din Garh		Tannery	1994	60	5	Wet Blue Hides	400 Th. Sq.Ft
441	Maqsood Tanneries Kot Molvi Abdul Qadir	2762935	Tannery	1982	800	8	Leather	105 Th. Sq.Ft.
442	Master Burkat Tannery Mangle Mandi		Tannery	1986	650	8	Finished Leather	175 Th. Sq. Ft.
443	Maulvi Muhammad Saeed Tannery Din Garh		Tannery	1985	225	5	Finished Leather	50 Th. Sq. Ft.
444	Maulvi Riaz Tannery Kot Maulvi Abdul Qadir		Tannery	1990	850	10	Finished Leather	220 Th. Sq. Ft.
445	Mehboob Tanneries (Unit No.1) Niaz Nagar		Tannery	1989	6900	14	Finished Leather	1125 Th.Sqft
446	Mehboob Tanneries (Unit No.2) Niaz Nagar		Tannery	1989	5300	12	Finished Leather	900 Th.Sqft
447	Mian Younis Tannery Niaz Nagar		Tannery	1995	700	5	Leather	400 Sq.Ft.
448	Miraj Maseh Tanneries Niaz Nagar		Tannery	1977	11	6	Leather	700 Th. Sq.Ft.

Sr. No.	Name / Address of unit	Phone No. / Website	Industry	Estb. Year	Investment (Th.Rs.)	Emp	Product	Annual Installed Capacity
449	Miraj Tannery Niaz Nagar	2763791	Tannery	1995	3300	14	Finished Leather	1000 Th.Sqft
450	Mirza Younas Tannery Niaz Nagar	2771046	Tannery	1987	4500	10	Wet Blue	45 Th.Sqft
451	Mistri M. Iqbal Tannery Near Chowk Hakeem Khan		Tannery	1995	650	5	Leather	400 Sq.Ft.
452	Mistry M.Ali Split Leather Niaz Nagar		Tannery	1998	5000	9	Finished Leather	900 Th.Sqft
453	Mistry Shafi Tannery		Tannery	1988	400	8	Finished Leather	175 Th. Sq.Ft.
454	Modern Leather Industry (Pvt) Ltd. Moza Khra		Tannery	1995	1000	11	Finished Leather	300 Th. Sq. Ft.
455	Mohammad Ajmal (Gullo) Tanneries Din Garh		Tannery	1985	2500	12	Leather	300 Th. Sq.Ft
456	Mohammad Yaqoob Tanniers Din Garh		Tannery	1985	1070	13	Leather	400 Th. Sq.Ft
457	Mohsan Rana Tanneries, Kot Moulvi Abdul Qadir		Tannery	1983	2800	15	Finished Leather	1000 Th.Sqft
458	Moulvi M. Saeed Tannery Din Garh		Tannery	1985	1800	11	Finished Leather	200 Th.Sq.Ft.
459	Moulvi Riaz Tannery Kot Moulvi Abdul Qadir		Tannery	1990	1700	13	Finished Leather	1000 Th.Sqft
460	Mubarak Tannery Niaz Nagar	2770459	Tannery	1985	6200	14	Wet Blue	49 Th.Sqft

Sr. No.	Name / Address of unit	Phone No. / Website	Industry	Estb. Year	Investment (Th.Rs.)	Emp	Product	Annual Installed Capacity
461	Mubashar Elahi Tanneries Niaz Nagar	2762936	Tannery	1995	650	5	Wet Blue Hides	250 Th. Sq.Ft
462	Mudassar Munawar Tannery Niaz Nagar		Tannery	1994	350	6	Finished Leather	75 Th. Sq. Ft.
463	Mufti Ahmed Tannery Kot Maulvi Abdul Qadir		Tannery	1991	2800	18	Finished Leather	500 Th.Sqft
464	Muhammad Ashraf Tannery Mangal Mandi	2771226	Tannery	1992	5400	13	Finished Leather	49 Th.Sqft
465	Muhammad Boota Tannery Mangle Mandi	2761091	Tannery	1984	5700	10	Finished Leather	42 Th.Sqft
466	Muhammad Haleem Tanneries Niaz Nager		Tannery	1981	350	6	Wet Blue Hides	400 Th. Sq.Ft
467	Muhammad Rafiq Tanneries Kot Maulvi Abdul Qadir		Tannery	1981	300	5	Split Leather	120 Th. Sq.Ft
468	Muhammad Shafiq Muhammad Nadeem Kot Maulvi Abdul Qadir		Tannery	1981	450	7	Finished Leather	120 Th. Sq. Ft.
469	Muhammad Sharif Tannery Kot Maulvi Abdul Qadir		Tannery	1987	500	10	Finished Leather	150 Th. Sq.Ft.
470	Mujahid Tanneries Mangal Mandi	2760854	Tannery	1995	5800	12	Finished Leather	49 Th.Sqft
471	Mukhtar Tannery Kot Maulvi Abdul Qadir		Tannery	1996	500	5	Leather	150 Th. Sq.Ft

Sr. No.	Name / Address of unit	Phone No. / Website	Industry	Estb. Year	Investment (Th.Rs.)	Emp	Product	Annual Installed Capacity
472	Mukhtar Tannery Mangle Mandi		Tannery	1987	700	6	Finished Leather	175 Th. Sq. Ft.
473	Munawar Tanneries Niaz Nagar		Tannery	1983	100	6	Leather	240 Th. Sq.Ft.
474	Munir Masih Tanneries Niaz Nagar		Tannery	1920	6	5	Leather	150 Th. Sq.Ft.
475	Munir Masih Tannery Mushtaq Nagar		Tannery	1985	375	5	Finished Leather	75 Th. Sq. Ft.
476	Munir Tanneries Kot Maulvi Abdul Qadri		Tannery	1985	1500	5	Leather	200 Th. Sq.Ft
477	Murad Tanneries Niaz Nagar		Tannery	1994	600	5	Leather	150 Th. Sq.Ft.
478	Mushtaq Tanneries Niaz Nagar	2764305	Tannery	1992	7400	13	Finished Leather	900 Th.Sqft
479	Mustafa Tannery Din Garh		Tannery	1986	650	11	Finished Leather	350 Th. Sq. Ft.
480	Mustafa Tannery-I Din Garh		Tannery	1984	455	8	Finished Leather	300 Th. Sq. Ft.
481	Nadeem Husain Tannery Din Garh		Tannery	1994	900	7	Finished Leather	300 Th. Sq. Ft.
482	Naeem Bagdad Tannery Kot Maulvi Abdul Qadir		Tannery	1986	600	7	Finished Leather	150 Th. Sq. Ft.
483	Naeem Tannery Kot Moulvi Abdul Qadir		Tannery	1983	2700	9	Finished Leather	200 Th.Sq.Ft.

Sr. No.	Name / Address of unit	Phone No. / Website	Industry	Estb. Year	Investment (Th.Rs.)	Emp	Product	Annual Installed Capacity
484	Naveed Tannery Kot Moulvi Abdul Qadir		Tannery	1987	2600	10	Finished Leather	175 Th.Sq.Ft.
485	Nawaz Tanery Niaz Nagar		Tannery	1992	800	7	Finished Leather	300 Th. Sq. Ft.
486	Nayab Leather Craft Niaz Nagar	2761803	Tannery	1991	1500	10	Leather	400 Th. Sq.Ft
487	Nazar Tannery Din Garh	2764383	Tannery	1978	4000	12	Finished Leather	800 Th.Sqft
488	New Ghousia Tannery Mangal Mandi	2764739	Tannery	1994	3300	10	Finished Leather	900 Th.Sqft
489	Niaz Nisar Tannery Niaz Nagar	2760592	Tannery	1990	4400	15	Finished Leather	1000 Th.Sqft
490	Niaz Tanneries Din Garh		Tannery	1978	1500	10	Leather	250 Th. Sq.Ft
491	Nisar Niaz Tannery Kot Moulvi Abdul Qadir	271876	Tannery	1984	2200	10	Finished Leather	450 Th.Sqft
492	Noor Elahi Tannery Din Garh	2762051	Tannery	1996	5900	20	Finished Leather	175 Th. Sq. Ft.
493	Noor Tannery Din Garh	761589	Tannery	1994	250	5	Sole Leather	300 Th. Sq.Ft
494	Orient Leather Works Niaz Nagar		Tannery	1993	3800	10	Finished Leather	500 Sq.Ft.
495	Pak Tanneries Niaz Nagar		Tannery	1988	400	5	Wet Blue Hides	150 Th. Sq.Ft
496	Pakistan Leather Industries N. Nagar	2763019	Tannery	1995	700	6	Leather	450 Sq.Ft.
497	Paradise Leather Industries (Pvt) Ltd. 47 Km Ferozepur Road	2716186	Tannery	2002	32000	29	Finished Leather	500 Th.Sqft

Sr. No.	Name / Address of unit	Phone No. / Website	Industry	Estb. Year	Investment (Th.Rs.)	Emp	Product	Annual Installed Capacity
498	Peshawar Tanneries Niaz Nagar	2771942	Tannery	1980	3200	9	Finished Leather	400 Th.Sq.Ft.
499	Pindi Tanneries Kot Moulvi Abdul Qadir	2763977	Tannery	1985	3100	14	Finished Leather	800 Th.Sqft
500	Punjab Tanneries Niaz Nagar		Tannery	1990	3000	8	Leather	300 Th. Sq.Ft
501	Quetta Tanneries Niaz Nagar		Tannery	1980	250	5	Chrome Leather	150 Th. Sq.Ft
502	Qureshi Tannery Haji Abdul Rasheed Chowk Mangal Mandi		Tannery	1976	5500	12	Finished Leather	45 Th.Sqft
503	Qureshi Tannery, Mangal Mandi Road		Tannery	1995	650	6	Leather	350 Sq.Ft.
504	Rafiq Tanneries Kot Moulvi Abdul Qadir		Tannery	1980	3800	9	Finished Leather	1000 Th.Sqft
505	Raji Tannery St. No.1 Niaz Nagar		Tannery	1997	550	5	Leather	300 Sq.Ft.
506	Rana Akhtar Hussain Tannery Kot Maulvi Abdul Qadir		Tannery	1985	590	12	Finished Leather	200 Th. Sq.Ft
507	Rana Elahi Tannery Mushtaq Nagar		Tannery	1994	3300	13	Finished Leather	700 Th.Sqft
508	Rana Tannery Kot Moulvi Abdul Qadir	2760010	Tannery	1985	2100	10	Finished Leather	50 Th. Sq. Ft.
509	Rang Elahi Tanneries Niaz Nagar	2760571	Tannery	1995	3600	12	Finished Leather	250 Th.Sq.Ft.

Sr. No.	Name / Address of unit	Phone No. / Website	Industry	Estb. Year	Investment (Th.Rs.)	Emp	Product	Annual Installed Capacity
510	Rang Elahi Tanneries Younis Nagar	2760578	Tannery	1994	3300	13	Finished Leather	300 Th.Sq.Ft.
511	Rasheed Bilal Khuradia Tannery Niaz Nagar		Tannery	1990	4200	9	Split Leather	700 Th.Sqft
512	Rasheed Split Leather Niaz Nagar		Tannery	1996	1620	9	Finished Leather	700 Th.Sqft
513	Rashid Bila Khuradia Tannery Niaz Nagar		Tannery	1990	1600	9	Finished Leather	300 Th.Sq.Ft.
514	Rehman Brother Tannery Din Garh	2764236	Tannery	1985	9000	17	Finished Leather	1450 Th.Sqft
515	Rehman Tanneries Niaz Nagar		Tannery	1978	2000	12	Leather	400 Th. Sq.Ft
516	Riaz Ahmad Tannery Din Garh		Tannery	1984	350	5	Finished Leather	175 Th. Sq. Ft.
517	Riaz Tanneries 11 Km Ferozepur Road	2760447	Tannery	1993	20000	56	Finished Leather	4500 Th.Sqft
518	Riaz Tannery Niaz Nagar	2760503	Tannery	1986	4400	10	Split Leather	1100 Th.Sqft
519	Rizwan Tannery Mangal Mandi		Tannery	1993	6200	13	Finished Leather	53 Th.Sqft
520	Rustam Tannery Niaz Nagar		Tannery	1983	2700	9	Finished Leather	210 Th. Sq.Ft.
521	S. S. Tanneries Din Garh	2760703	Tannery	1987	2500	10	Leather	350 Th. Sq.Ft
522	S.A. London (Job Work) Niaz Nagar	2761531	Tannery	2002	2450	11	Wet Blue	600 Th.Sqft
523	S.F. Leather Younas Nagar	2761803-4	Tannery	1991	3100	10	Wet Blue	1500 Th.Sqft

Sr. No.	Name / Address of unit	Phone No. / Website	Industry	Estb. Year	Investment (Th.Rs.)	Emp	Product	Annual Installed Capacity
524	S.H Leather Works Mangal Mandi		Tannery	1990	5800	13	Finished Leather	875 Th.Sqft
525	S.K. Leather Works Younis Nagar		Tannery	1996	700	9	Leather	600 Sq.Ft.
526	S.R. International (Kasur Tanneries) Din Garh		Tannery	1995	1000	8	Leather	500 Th. Sq.Ft
527	S.S. Tanneries Din Garh	2760703	Tannery	1987	3200	13	Finished Leather	900 Th.Sqft
528	Sadana Tannery Din Garh		Tannery	1988	300	5	Finished Leather	75 Th. Sq. Ft.
529	Saddiq Ijaz Ahmad Tanney Din Garh		Tannery	1992	625	7	Finished Leather	200 Th. Sq. Ft.
530	Sadiq Masih Tannery Mangle Mandi Road		Tannery	1986	500	6	Finished Leather	75 Th. Sq. Ft.
531	Saeed Akram Tanneries Niaz Nagar		Tannery	1991	1000	7	Leather	120 Th. Sq.Ft
532	Saeed Bhoula Al-Aziz Tannery Mushtaq Nagar		Tannery	1987	575	7	Finished Leather	175 Th. Sq. Ft.
533	Saeed Tanneries Din Garh		Tannery	1980	1200	8	Vegetable Tanned Leather	150 Th. Sq.Ft
534	Sahiwal Tanneries Niaz Nagar		Tannery	1995	6300	17	Finished Leather	947 Th.Sqft
535	Sajjad Tanneries Niaz Nagar	2770368	Tannery	1995	2450	6	Finished Leather	400 Th.Sq.Ft.
536	Saleem Tanneries Kot Maulvi Abdul Qadir		Tannery	1990	500	5	Wet Blue Hides	150 Th. Sq.Ft

Sr. No.	Name / Address of unit	Phone No. / Website	Industry	Estb. Year	Investment (Th.Rs.)	Emp	Product	Annual Installed Capacity
537	Saqib Tannery Niaz Nagar	2770532	Tannery	2004	1600	14	Finished Leather	300 Th.Sq.Ft.
538	Sardar Tanneries Niaz Nagar	2762220	Tannery	1994	4900	15	Wet Blue Hides	875 Th.Sqft
539	Sh. Leather Works Mangle Mandi		Tannery	1990	1200	8	Finished Leather	200 Th. Sq. Ft.
540	Sh. Muhammad Rashid & Sons Din Garh		Tannery	1991	3500	15	Wet Blue Hides	500 Th. Sq.Ft
541	Sh.Fiaz Nayab Tannery Mangle Mandi		Tannery	1990	2400	22	Finished Leather	700 Th. Sq. Ft.
542	Shab-E-Qadir Tanneries Niaz Nagar		Tannery	1992	4800	12	Finished Leather	100 Th. Sq.Ft
543	Shafi Tanneries Kot Moulvi Abdul Qadir	2761689	Tannery	1990	1500	8	Leather	350 Th. Sq.Ft
544	Shafi Tanneries Niaz Nagar		Tannery	1988	1030	7	Leather	150 Th. Sq.Ft
545	Shafi Tannery Din Garh		Tannery	1982	600	5	Finished Leather	350 Th. Sq. Ft.
546	Shafiq Jameel Tannery Mangal Mandi		Tannery	1992	5500	14	Finished Leather	58 Th.Sqft
547	Shafique Tanneries Niaz Nagar		Tannery	1970	9500	10	Leather	350 Th. Sq.Ft
548	Shah Qadir Tannery Mangal Mandi	2761116	Tannery	1996	700	5	Wet Blue Hides	150 Th. Sq.Ft
549	Shah Tannery Niaz Nagar		Tannery	1989	1500	8	Leather	200 Th. Sq.Ft
550	Shaheen International (Pvt) Ltd. 1.5. K.M.Kadur Pattoki Road		Tannery	1992	5500	60	Finished Leather	300 Th. Sq. Ft.

Sr. No.	Name / Address of unit	Phone No. / Website	Industry	Estb. Year	Investment (Th.Rs.)	Emp	Product	Annual Installed Capacity
551	Shaheen International (Pvt) Ltd. 15-Km Kadar Pattoki		Tannery	1992	6600	56	Finished Leather	11025 Th.Sqft
552	Shaheen Tanneries Niaz Nagar		Tannery	1978	1550	13	Finished Leather	475 Th.Sqft
553	Shahid Iqbal Tanneries Niaz Nagar	2760592	Tannery	1995	2000	10	Wet Blue Hides	300 Th. Sq.Ft
554	Shahid Sharif Tannery Din Garh	2722745	Tannery	1990	3100	5	Finished Leather	800 Th.Sqft
555	Shahid Tannery Niaz Nagar	2764486	Tannery	2000	2854	12	Finished Leather	500 Th.Sqft
556	Shama Tannery Weaving Factory Din Garh	2760658	Tannery	1948	9000	8	Finished Leather	425 Th.Sqft
557	Shan Tanneries Niaz Nagar	2761086	Tannery	1987	3000	10	Finished Leather	500 Th.Sqft
558	Sharif Tanneries Din Garh	2761201	Tannery	1980	2000	10	Leather	200 Th. Sq.Ft
559	Sharif Tannery Kot Maulvi Abdul Qadir		Tannery	1987	450	5	Leather	150 Th. Sq.Ft
560	Shaukat Tanneries Kot Moulvi Abdul Qadir	2763013	Tannery	1985	500	5	Wet Blue Skin , Leather	450 Th. Sq.Ft , 450 Th. Sq.Ft
561	Siddique Tannery Mangle Mandi Road		Tannery	1987	290	5	Finished Leather	800 Th. Sq.Ft.
562	Suleman Tanneries Din Garh		Tannery	1975	1000	6	Leather	150 Th. Sq.Ft.
563	Sun Rise Tannery Niaz Nagar		Tannery	1992	450	6	Finished Leather	175 Th.Sq.Ft.

Sr. No.	Name / Address of unit	Phone No. / Website	Industry	Estb. Year	Investment (Th.Rs.)	Emp	Product	Annual Installed Capacity
564	Sunshine Tannery Niaz Nagar		Tannery	1991	1900	10	Finished Leather	65 Th.Sqft
565	Syed Akram Tanneries Niaz Nagar	2770404	Tannery	2000	2900	15	Wet Blue	100 Th. Sq.Ft
566	Tannery Srvce (Pvt) Ltd L. Khara Road		Tannery	1990	12000	65	Finished Leather	11075 Th.Sqft
567	Tariq Tannery Niaz Nagar		Tannery	1982	5200	18	Finished Leather	900 Th.Sqft
568	Towakal & Co. Niaz Nagar		Tannery	1986	5800	12	Finished Leather	950 Th.Sqft
569	Usman Saleem Tannery Din Garh		Tannery	1985	2500	10	Wet Blue	350 Th.Sqft
570	Usman Tanneries Kot Maulvi Abdul Qadar		Tannery	1978	800	5	Leather	300 Th. Sq.Ft
571	Victory Tannery Niaz Nagar	2760711	Tannery	1995	1350	5	Finished Leather	500 Th.Sqft
572	Waqar Tanneries Niaz Nagar	2762989	Tannery	1995	3200	15	Chrome Leather	150 Th. Sq.Ft
573	Waseem Tanneries Niaz Nagar		Tannery	1994	5200	10	Finished Leather	700 Th.Sqft
574	Wasim Tannery Mangle Mandi		Tannery	1992	1700	16	Finished Leather	400 Th. Sq. Ft.
575	Wellcome Leater Niaz Nagar Kasur	2762072-3	Tannery	1993	6770	29	Finished Leather	6000 Th.Sqft
576	Yaqoob Tannery Niaz Nagar		Tannery	1991	443	6	Leather	300 Th. Sq.Ft
577	Yasin Sharif Tannery Niaz Nagar		Tannery	1990	500	6	Finished Leather	175 Th. Sq. Ft.

Sr. No.	Name / Address of unit	Phone No. / Website	Industry	Estb. Year	Investment (Th.Rs.)	Emp	Product	Annual Installed Capacity
578	Yayah Tanneries 44 Km. Ferozepur Road		Tannery	1995	395	8	Leather	200 Th. Sq.Ft
579	Youqub Bhola Tannery Niaz Nagar		Tannery	1991	3900	13	Wet Blue	9000 Th.Sqft
580	Yousaf Kota Tannery Niaz Nagar	2771055	Tannery	1982	2900	10	Upper Leather	1200 Th.Sqft
581	Yousaftanneries Niaz Nagar	2762071, 2771371	Tannery	1975	7000	58	Finished Leather	2000 Th.Sqft
582	Zahid Tanneries O/S Kot Pacca Qila		Tannery	1993	1260	6	Wet Blue Hides , Leather	300 Th. Sq.Ft, 150000 Sq.Ft
583	Zubair Ash Iq Tannery Mangal Mandi	2762085	Tannery	1993	4500	11	Finished Leather	51 Th.Sqft
584	Al-Farooq Exportors, Nizampura Road Bhassarpara	2761512	Tents	1987	18000	16	Tents	24000 Nos.
585	Asad Jawad Tentage & Textile Industries Ltd, Ferozepur Road	0300-9664869	Tents	1998	14500	15	Tents	24000 Nos.
586	Atara Tarpauline Textile Industries 47 Km Ferozepur Road	2716180-1	Tents	2005	25000	8	Tents	72 Looms
587	Hussain Industries, Nizampura Road	2762458, 0300-4846487	Tents	1983	19000	18	Tents	48000 Nos.
588	Sg. Textile, 8.5 Km Ferozepur Road	2761904, 2770026	Tents	1997	22000	18	Tents	36000 Nos.

Sr. No.	Name / Address of unit	Phone No. / Website	Industry	Estb. Year	Investment (Th.Rs.)	Emp	Product	Annual Installed Capacity
589	Shahid Textile Industries, 7.5 Km Kasur Ferozepur Road	042-5865204, 5831820	Tents	1987	23500	27	Tents	60000 Nos.
590	Azgard Nine Mills Ltd. 25 Km Raiwind Manga Road	5350697	Textile Composite	1995	411253	468	Cotton Yarn , Grey Cloth	672 Rotors , 48 Looms
591	Ghazi Fabrics International Ltd. 46 Km Multan Road Bhaipheru		Textile Composite	1991	886236	1316	Cotton Yarn , Grey Cloth	34560 Spindles , 72 Looms
592	Hamid Textile Mills Ltd. Wah Adhan Pattoki	4428177	Textile Composite	1989	348601	380	Cotton Yarn , Grey Cloth	960 Rotors , 60 Looms
593	Mian Textile Industries Ltd. 48.5 Km Multan Road	4540384	Textile Composite	1986	650470	893	Cotton Yarn , Grey Cloth	18456 Spindles , 104 Looms
594	Shazi Fabrics International Ltd. 46-Km. Multan Road Chunian	5764026	Textile Composite	1991	550000	1296	Cotton Yarn , Grey Cloth	17280 Spindles , 72 Looms
595	Taj Textile Mills Ltd. 49 Km Multan Road Bhai Pheru	4540373-5	Textile Composite	1986	2042431	2600	Cotton Yarn , Grey Cloth	39760 Spindles, 128 Looms
596	Yousaf Weaving Mills Ltd. 49 Km. Multan Road Sarai Cheemba	5757108	Textile Composite	1988	480000	1104	Cotton Yarn , Grey Cloth	15360 Spindles , 144 Looms
597	Zahur Textile Mills Ltd. 49Th Km Multan Road Bhaipheru		Textile Composite	1987	1876916	2470	Cotton Yarn , Grey Cloth	28700 Rotors , 110 Looms
598	Bedouin (Pvt) Ltd, 65 Km Multan Road	4388474-6 www.bedouin.com.pk	Textile Madeups	2004	65812.608	45	Pillow/ Matress Covering	800 Th. Nos.

Sr. No.	Name / Address of unit	Phone No. / Website	Industry	Estb. Year	Investment (Th.Rs.)	Emp	Product	Annual Installed Capacity
599	Aruj Garment Accessories Ltd. 2 Km Raiwind Manga Road	5358061	Textile Processing	1995	50000	15	Bleached Cloth	7000 Th. Meters
600	Baba Farid Industries (Pvt) Ltd. Buchaki Maja Raiwind	042-5532333	Textile Processing	1992	3000	80	Dyed Cloth	500 Th. Meters
601	Be Be Jan Colours Ltd. Bochehi Mahja 3.2 Km From Raiwind Managa Road Chunian	5320021-4	Textile Processing	2005	100000	150	Processed Cloth	12000 Th.Meters
602	Chakwal Spinning Mills Ltd. (Dyeing Unit) 4 Km Manga Raiwind Road	5757105	Textile Processing	2001	50000	C	Dyed Cloth	7000 Th. Meters
603	Kohinoor Dying, Raiwind Manga Road, (Division Of Kwml)	5391941-5	Textile Processing	2001	36000	525	Dyed Cloth	18 Th. Meters
604	New National Cloth Calendering Industries Lulyani Adda		Textile Processing	1976	600	C	Processed Cloth	5500 Th. Meters
605	Novity Fabrics Processing Mills Ltd. 61 Km Multan Road Jamber Khurd	4390863	Textile Processing	1995	300000	60	Dyed Cloth	18000 Th. Meters
606	Saphire Fibres Ltd. 3.5 Km Raiwind Manga Road	5392373	Textile Processing	1979	664780	480	Processed Cloth	1178 Th.Meters

Sr. No.	Name / Address of unit	Phone No. / Website	Industry	Estb. Year	Investment (Th.Rs.)	Emp	Product	Annual Installed Capacity
607	Saphire Finishing Mills Ltd. 2-Km. Raiwind Manga Road	5750410	Textile Processing	2002	95000	500	Proceed Cloth	15 Th. Meters
608	Saphire Finishing Mills Ltd. 3 Km Off Manga Raiwind Road Raiwind	5393493	Textile Processing	2000	999812	500	Processed Cloth	1650 Th.Meters
609	Sapphire Dying Raiwind Manga Road		Textile Processing	1997	194218	141	Dyed Cloth	13 Th. Meters
610	Sapphire Fiber Ltd. (Dying Unit) 4-Km. Raiwind Manga Road	5750410	Textile Processing	2002	87500	450	Dyed Cloth	13 Th. Meters
611	Shameem Textile Mill 3 Km Raiwind Manga Road	5391392 www.shameemtextile.com	Textile Processing	1995	2050	50	Dyed Cloth	5 Th. Meters
612	Aa Cotton Mills Ltd. 53-Km Multan Road Phool Nagar	4512570-1	Textile Spinning	2004	137000	405	Cotton Yarn	20940 Spindles
613	Abubakar Textile Mills 49-Km Multan Road Bhai Pheru	4540253-4	Textile Spinning	2001	223258	299	Cotton Yarn	3500 Rotors
614	Ahad Fibres (Pvt) Ltd. Manga Raiwind Road	45393030	Textile Spinning	1998	7385	145	Cotton Yarn	8500 Spindles
615	Ahad Mills (Pvt) Ltd. Nathe Jageer Tehsil Pattoki	4540039	Textile Spinning	2002	25000	61	Cotton Yarn	6720 Spindles
616	Akram Industries Ltd. Habibabad Pattoki	www.brainet.pk/Ali 4500106	Textile Spinning	1990	200000	720	Cotton Yarn	18288 Spindles

Sr. No.	Name / Address of unit	Phone No. / Website	Industry	Estb. Year	Investment (Th.Rs.)	Emp	Product	Annual Installed Capacity
617	Al Nasr Textiles Ltd. 9-Km Raiwind Manga Road	5391141 www.pakkwait.com	Textile Spinning	2001	100614	631	Cotton Yarn	19200 Spindles
618	Ali Haq Spinning (Pvt) Ltd. 41 Km. Multan Road	5751290-93	Textile Spinning	1994	34000	155	Yarn	4800 Rotors
619	Allama Textile Mills Ltd. 5 Km Raiwind Manga Road	5391141	Textile Spinning	1993	331247	75	Cotton Yarn	17280 Spindles
620	Amer Cotton Mills (Pvt) Ltd. 54-Km Multan Road	5388140	Textile Spinning	1988	1297457	720	Cotton Yarn	19200 Spindles
621	Aruj Textile Mills 46-Km Multan Road	4540320	Textile Spinning	1987	32800	463	Cotton Yarn	12480 Spindles
622	Asher Imran Spinning Mills (Pvt) Ltd. 5 9-Km Multan Road Bhai Pheru Bye Pass	4511801-5 www.cki.com.pk	Textile Spinning	2002	500000	655	Cotton Yarn	16800 Spindles
623	Azam Textile Mills Ltd. 51 Km Multan Road Bhaipheru	4510654-5	Textile Spinning	1987	460086	471	Cotton Yarn	21120 Spindles
624	Aziz Spinning Mills 2.5-Km Raiwind Road	2763008, 2765242	Textile Spinning	1990	450199	532	Pc Yarn	18240 Spindles
625	B.I.A. Textile Mills 48 K.M. Ferozepur Road		Textile Spinning	1992	15000	C	Cotton Yarn	25400 Spindles
626	Bahram Industries Raiwind Manga Road		Textile Spinning	1993	11000	C	Cotton Yarn	14400 Spindles
627	Baksh Fibre, 49-Km. Multan Road		Textile Spinning	1999	18000	75	Yarn	600 Rotors

Sr. No.	Name / Address of unit	Phone No. / Website	Industry	Estb. Year	Investment (Th.Rs.)	Emp	Product	Annual Installed Capacity
628	Balaj Textile Mills (Pvt) Ltd. 42.5-Km Ferozepur Road Wadana Stop	2716152	Textile Spinning	1991	53445	69	Pc Yarn	14025 Spindles
629	Best Way Spinning Raiwind Manga Road		Textile Spinning	1992	509624	C	Cotton Yarn	27500 Spindles
630	Bhatti Spinning Mills Ltd. 2.5-Km Raiwind Kasur Road	2761165	Textile Spinning	2001	13000	92	Cotton Yarn	13000 Spindles
631	Bilal Spinning Mills Ltd. 53 Km Multan Road Bhaipheru	5118589 www.umargroup.net	Textile Spinning	1989	19700	381	Pc Yarn	19200 Spindles
632	Brothers Textile Mills Ltd. 48 Km Multan Road Bhaipheru	5752781, 4540067	Textile Spinning	1987	210224	586	Cotton Yarn	17280 Spindles
633	Capital Spinning Mills Ltd. 7.5 Km Raiwind Manga Road	5353257	Textile Spinning	1993	340000	399	Cotton Yarn	17280 Spindles
634	Chakwal Spinning Mills Ltd. 49 Km. Multan Road Bhai Pheru	5540084-5	Textile Spinning	1989	553379	1130	Cotton Yarn	33612 Spindles
635	Chakwal Spinning Mills Multan Road Bhaipheru	4577108	Textile Spinning	1988	342860	73	Cotton Yarn	14400 Spindles
636	Chiniot Textile Mills Ltd. 3-Km Head Balloki Road Phool Nagar	4510464	Textile Spinning	1987	625278	557	Pc Yarn	18456 Spindles

Sr. No.	Name / Address of unit	Phone No. / Website	Industry	Estb. Year	Investment (Th.Rs.)	Emp	Product	Annual Installed Capacity
637	Chiragh Textile Mills (Pvt) Ltd. 6-Km Manga Raiwind Road	5851182-83	Textile Spinning	2000	47227	143	Cotton Yarn	12000 Spindles
638	Crystal Spinning (Pvt) Ltd. Chak No.65 4 Km Manga Road Raiwind	5391827	Textile Spinning	2001	32000	130	Cotton Yarn	5300 Spindles
639	Danish Spinning Mills Ltd. 7-Km Raiwind Manga Road	5391681	Textile Spinning	1993	221121	10	Cotton Yarn	1400 Spindles
640	Data Textiles Ltd. 56 Km Multan Road Bhaipheru	4510344	Textile Spinning	2001	137500	263	Cotton Yarn	14400 Spindles
641	Dawood Spinning Mills (Pvt) Ltd. 4-Km Raiwind Manga Road	5393488 www.pakas iagroup.co m	Textile Spinning	2002	510000	216	Cotton Yarn	19608 Spindles
642	Din Textile Mills Ltd. 70 Km. Multan Road Pattoki	0303-7351028, www.dingro up.com	Textile Spinning	1990	807458	1644 3	Cotton Yarn	38400 Spindles
643	Eastern Spinning Mills Ltd. (Unit No.1) 4-Km Raiwind Manga Road Raiwind	5392132, www.easter ngroup.co m	Textile Spinning	1991	4868	409	Cotton Yarn	19152 Spindles
644	Eastern Spinning Mills Ltd. Unit No.2, 2.5 Km Bye Pas Rui Nala Manga Raiwind Road Raiwind	5393434-5	Textile Spinning	2000	214715	385	Cotton Yarn	22704 Spindles

Sr. No.	Name / Address of unit	Phone No. / Website	Industry	Estb. Year	Investment (Th.Rs.)	Emp	Product	Annual Installed Capacity
645	Ejaz Textile Mills Ltd. 49-Km Multan Road	4540299, 0303-7351442, www.ejazgroup.com	Textile Spinning	1987	297000	328	Cotton Yarn	15720 Spindles
646	Ellecot Spinning Mills Ltd. Mouza Rossa 6.3 Km Manga Raiwind Road	5383773-4 www.nagina.com	Textile Spinning	1988	226261	925	Cotton Yarn	38376 Spindles
647	Empire Textile Mills (Pvt) Ltd. 6 Km Raiwind Manga Road	5391482	Textile Spinning	1992	108381	280	Cotton Yarn	20000 Spindles
648	Farooq Habib Textile Mills Ltd. 46 Km Multan Road Bhai Pheru	4540054	Textile Spinning	1992	407125	417	Cotton Yarn	20160 Spindles
649	Fateh Yarn (Pvt) Ltd. 49-Km Multan Road Phool Nagar	4511071	Textile Spinning	1984	15500	83	Cotton Yarn	18000 Spindles
650	Fawad Textile Mills Ltd 49-Km Multan Road Phool Nagar Village Kamogill	4540156	Textile Spinning	1989	149728	472	Cotton Yarn	14400 Spindles
651	Fazal (Pvt) Ltd. Jamber Khurd, 68-Km Multan Road		Textile Spinning	1990	11000	C	Cotton Yarn	14400 Spindles
652	Glamour Textile Mills Ltd. 11 Km Manga Raiwind Road	5391205, www.glamourtextiles.com	Textile Spinning	1991	601643	453	Cotton Yarn	19200 Spindles
653	Golden Textile Mills Ltd. 46 K.M Lahore Multan Road Kasur.	(0342)350821	Textile Spinning	1993	83588	148	Cotton Yarn	14400 Spindles

Sr. No.	Name / Address of unit	Phone No. / Website	Industry	Estb. Year	Investment (Th.Rs.)	Emp	Product	Annual Installed Capacity
654	Grand Textile Mills Pvt. Ltd. 50 Km., Lahore Multan Rd; Kasur	04943-3520	Textile Spinning	1990	80000	5	Cotton Yarn	14200 Spindles
655	Gulistan Spinning Mills Ltd. 60-Km Multan Road Jumber Khurd	4388046	Textile Spinning	1987	550156	480	Cotton Yarn	19200 Spindles
656	Gulistan Spinning Mills Ltd. Bhai Pheru Chunian	4388171 www.gulistangroup.com	Textile Spinning	1987	280328	677	Cotton Yarn	19200 Spindles
657	Gulshan Spinning Mills Ltd. No. li 60-Km Jumber Khurd Multan Road	4388045 www.gulshangroup.com.pk	Textile Spinning	1988	67253	440	Cotton Yarn	23278 Spindles
658	Hashim Textiles, Knitweaves (Pvt) Ltd. 43-Km Multan Road	0492005624	Textile Spinning	2001	40500	29	Cotton Yarn	800 Rotors
659	Hashimi Spinning Mills Ltd. 7.5-Km Manga Raiwind Road	5383639-40	Textile Spinning	2000	379708	412	Cotton Yarn	17280 Spindles
660	Hira Textile Mills Ltd. 8-Km Raiwind Manga Road Raiwind	5392305-7 www.hiramills.com	Textile Spinning	1991	629907	900	Cotton Yarn	33600 Spindles
661	Hi-Tech Spinning Mills (Pvt)Ltd. Chak 65 Manga Raiwind Rd.	5393074	Textile Spinning	2004	11000	216	Cotton Yarn	12000 Spindles

Sr. No.	Name / Address of unit	Phone No. / Website	Industry	Estb. Year	Investment (Th.Rs.)	Emp	Product	Annual Installed Capacity
662	Ihsan Cotton Products(Pvt) Limited. 4 Km Manga Road Raiwind	5391114, www.ihsanpakistan.com	Textile Spinning	1992	522224	525	Cotton Yarn	2900 Rotors
663	Ihsan Raiwind Mills (Pvt) Ltd. Raiwind	5391158	Textile Spinning	2001	415589	265	Cotton Yarn	8064 Spindles
664	Iis Textile Mills Ltd.(Ex-Rain Bow Industries 56 Km Multan Road Bhaipheru	4352223	Textile Spinning	1980	13109	166	Cotton Yarn	1984 Rotors
665	Imran Spinning Mills Ltd. 49 Km Multan Road Bhaipheru	4843037	Textile Spinning	1989	158382	435	Cotton Yarn	15360 Spindles
666	Ittifaq Textile Mill. No.3 48 Km. Multan Road	5864059	Textile Spinning	1966	195859	C	Cotton Yarn	17280 Spindles
667	Jumpax Industries (Pvt) Ltd. Bye Pass Raiwind Manga Road Raiwind		Textile Spinning	1995	16700	C	Cotton Yarn	7000 Spindles
668	Khalid Shafique Spinning Mills Ltd. 1.6-Km Offroosa Village Stop Manga Raiwind Road	5383811-4	Textile Spinning	1992	312144	402	Cotton Yarn	23000 Spindles
669	Khalid Siraj Textile Mills Ltd. 48 Km Multan Road Bhaipheru	042-5839926, 454022	Textile Spinning	1988	644469	648	Cotton Yarn	17280 Spindles

Sr. No.	Name / Address of unit	Phone No. / Website	Industry	Estb. Year	Investment (Th.Rs.)	Emp	Product	Annual Installed Capacity
670	Lahore Spinning Mills Ltd. 47.5 Km., Lahore Multan Road, Kasur	4540019-20	Textile Spinning	1988	203218	584	Cotton Yarn	17760 Spindles
671	Manzoor Textile Mills Ltd. 1.5-Km Chunian Road Habibabad	4500246, 4500169	Textile Spinning	1991	260000	1102	Cotton Yarn	34720 Spindles
672	Mariam Spinning Mills 45-Km Multan Road Nathay Khalsa Pattoki	4540454-5	Textile Spinning	2004	322042	250	Cotton Yarn	2400 Spindles
673	Marral Textile Mills Ltd. 49-Km Multan Road Phool Nagar Kamo Gill Village	4540491, 4540313	Textile Spinning	2004	200000	457	Cotton Yarn	16520 Spindles
674	Mayfair Spinning Mills Ltd. 5-Km Manga Road Raiwind	5391041-3, www.mayfair.com.pk	Textile Spinning	1991	1132445	998	Cotton Yarn	30816 Spindles
675	Mehraan Ramzan Textile Mills Ltd. 3 Km Manga Road Raiwind	5391004-7	Textile Spinning	1992	51700	705	Cotton Yarn	20160 Spindles
676	Mian Textile Mills Ltd. 49. K.M Multan Road Sarai Chamba	5831804 www.miantextile.com	Textile Spinning	1992	221052	119	Cotton Yarn	15390 Spindles
677	Nafeesa Textiles Ltd. 49-Km Kasur Depalpur Road Allahabad	451481-3, www.nafeesatextiles.com	Textile Spinning	1991	234876	588	Cotton Yarn	21168 Spindles

Sr. No.	Name / Address of unit	Phone No. / Website	Industry	Estb. Year	Investment (Th.Rs.)	Emp	Product	Annual Installed Capacity
678	Najia Spinning Mills(Pvt) Ltd. 1-Km Chunian Roadhabibabad Pattoki	500042	Textile Spinning	1999	94763	C	Cotton Yarn	25200 Spindles
679	Naseem Spinning (Pvt) Ltd. 42 Km. Lahore Kasur Road Nasimabad	5867409	Textile Spinning	1990	31000	91	Cotton Yarn	1200 Rotors
680	Nishat (Chunian) Ltd. No.1 49-Km Multan Road Phool Nagar	540195-8, www.netex.com	Textile Spinning	1990	288492	993	Cotton Yarn	21404 Spindles
681	Nishat (Chunian) Ltd. No.2 49 Km. Multan Road	5761730-39 www.nstm.com	Textile Spinning	1989	238391	674	Cotton Yarn	17280 Spindles
682	Nishat (Chunian) Ltd. No.3 49-Km Multan Road Phool Nagar	4540037, www.netex.com	Textile Spinning	2004		Uc	Cotton Yarn	50000 Spindles
683	Nishat Chunian No.2 49-Km Multan Road Phool Nagar	4540037, www.netex.com	Textile Spinning	2000	643725	508	Cotton Yarn	50952 Spindles
684	Pak Panther Spinning Mills Ltd. 4.5-Km Manga Riawind Road	5392374, 5392325	Textile Spinning	1992	566000	750	Cotton Yarn	35796 Spindles
685	Paradise Spinning Mill 49-Km Multan Road Bhai Pheru	4540343	Textile Spinning	2000	500000	555	Cotton Yarn	21260 Spindles
686	Pioneer Spinning Mills Ltd. 4.5 Km Multan Road Bhaipheru	4540062 www.pioneerovna.com	Textile Spinning	1989	293980	528	Cotton Yarn	15408 Spindles

Sr. No.	Name / Address of unit	Phone No. / Website	Industry	Estb. Year	Investment (Th.Rs.)	Emp	Product	Annual Installed Capacity
687	Quetta Textile Mills Ltd. 47 Km Lahore Multan Road Chunian	4840971 www.quetta group.com	Textile Spinning	1991	1900074	827	Cotton Yarn	25536 Spindles
688	Rai Textile Mills Limited. Dinananth 46 Km Multan Road	4540320, 4540121	Textile Spinning	1987	34000	428	Cotton Yarn	12480 Spindles
689	Ramzan Buksh Textile Mills Ltd. 48 Km Multan Road Bhaipheru	5756623	Textile Spinning	1988	61487	C	Cotton Yarn	17280 Spindles
690	Ravi Spinnings Ltd. 4.2-Km Manga Raiwind Road	5390465	Textile Spinning	1991	450233	550	Cotton Yarn	17280 Spindles
691	Ravi Textile Mills Ltd. 49 Km Multan Road Chunain	4540086, 4540321	Textile Spinning	1988	334663	563	Cotton Yarn	17640 Spindles
692	Resham Textile Industries Ltd. 1.5 Km Habibabad Chunian Road Chunian	4500231	Textile Spinning	1990	275511	578	Cotton Yarn	17280 Spindles
693	Ruby Textile Mills Ltd. 3 Km Manga Road Raiwind	5391031	Textile Spinning	1991	175727	632	Cotton Yarn	17664 Spindles
694	Saitex Spinning Mills Ltd. 49 Km Multan Road Bhaipheru	0342- 5351690	Textile Spinning	1989	135103	313	Cotton Yarn	12480 Spindles
695	Sajjad Textile Mills Ltd. Jamber Kalan Chunian	4388102	Textile Spinning	1989	331966	654	Cotton Yarn	17280 Spindles

Sr. No.	Name / Address of unit	Phone No. / Website	Industry	Estb. Year	Investment (Th.Rs.)	Emp	Product	Annual Installed Capacity
696	Salman Noman Enterprises Ltd. 4Th Km Balloki Road Bhaipheru	4511297	Textile Spinning	1985	191924	584	Pc Yarn	17760 Spindles
697	Sapphire Textile Mills Ltd. No.4 Jumber Khurd	4388051-2, www.sapphire.com.pk	Textile Spinning	1988	211305	521	Cotton Yarn	17280 Spindles
698	Sardar Pur Textile Mills Ltd 46 Km. Multan Road Hamidabad Bhaipheru	4540243	Textile Spinning	1976	157589	516	Cotton Yarn	16752 Spindles
699	Sarfraz Yaqub Textile Mills Ltd., 49-Km Multan Road	4540296	Textile Spinning	1998	455583	773	Cotton Yarn	24500 Spindles
700	Saritow Spinning Mills 51. Km. Multan Road Bhai Pheru	4510654-5	Textile Spinning	1987	211440	465	Cotton Yarn	21120 Spindles
701	Seven Star Textile Spinning Mills Raiwind Manga Road	2005147	Textile Spinning	2005		C	Cotton Yarn	8000 Spindles
702	Shahnawaz Textiles Ltd. 6-Km Manga Road Raiwind	5391560-61	Textile Spinning	1991	280953	637	Cotton Yarn	22560 Spindles
703	Shahpur Textile Mills Ltd. 64 Km Multan Road Jumber Khurd Chunian	388002, www.shahpur.com	Textile Spinning	1987	314481	454	Cotton Yarn	22080 Spindles
704	Shaukat Textile Mills Chak No.65 Manga Raiwind Road	923030	Textile Spinning	1997	81000	C	Cotton Yarn	15360 Spindles

Sr. No.	Name / Address of unit	Phone No. / Website	Industry	Estb. Year	Investment (Th.Rs.)	Emp	Product	Annual Installed Capacity
705	Sheikh Spinning Mills Ltd. 3 Km Manga Road Raiwind	5391125	Textile Spinning	1993	78216	1230	Cotton Yarn	34100 Spindles
706	Sheikhpura Textile Mills Ltd Head Balloki Road Bhaipheru	451264	Textile Spinning	1987	626821	583	Cotton Yarn	20348 Spindles
707	Superior Textile Mills Ltd. 2 Km Raiwind Manga Road	5118490	Textile Spinning	1991	808432	394	Cotton Yarn	17280 Spindles
708	Taj Textile Mills 49 Km. Multan Road	5710216	Textile Spinning	1987	220422	812	Cotton Yarn	39360 Spindles
709	Tri-Tex Cotton Mills Ltd. 65-Km Lahore Multan Road Bhai Pheru	4388164, 4388352	Textile Spinning	1988	81000	1072	Cotton Yarn	33600 Spindles
710	Umer Fabrics Ltd. (Unit No.1) 49-Km Multan Road Bhai Pheru	4540195-6 www.nctn.com	Textile Spinning	1990	219548	567	Cotton Yarn	19200 Spindles
711	Umer Fabrics Ltd. (Unit No.2) 49-Km Multan Road Bhai Pheru	042-6304892	Textile Spinning	1988	311601	702	Cotton Yarn	38544 Spindles
712	Yan Textile Industries (Pvt) Ltd. 8 Km Manga Raiwind Road	5351832	Textile Spinning	1992	13000	125	Cotton Yarn	800 Rotors
713	Yousaf Weaving Mills (Spinning Unit) 7-Km Multan Road	4420223, www.yousafweaving.com.pk	Textile Spinning	1992	230795	622	Cotton Yarn	20520 Spindles

Sr. No.	Name / Address of unit	Phone No. / Website	Industry	Estb. Year	Investment (Th.Rs.)	Emp	Product	Annual Installed Capacity
714	Zahur Spinning Mills Ltd. Textile Mills 49 Km. Multan Road Saria Chamba	4540187	Textile Spinning	1985	1016975	1080	Cotton Yarn	43872 Spindles
715	Akram Weaving Factory Madina Colony	5710332	Textile Weaving	1993	1111	C	Grey Cloth	55 Looms
716	Al-Manzoor Weaving Mills (Pvt) Ltd. 50 Km. Multan Road Near Bhaipheu		Textile Weaving	1992	2756	C	Grey Cloth	40 Looms
717	Al-Noor Fabrics Sardar Colony St.No.2 General Bus Stand	2763220	Textile Weaving	1967	2500	10	Grey Cloth	48 Looms
718	Apex Fabrics Ltd. 47 Km Multan Road Dina Nath Bhaipheru	9595322	Textile Weaving	1990	625	C	Grey Cloth	48 Looms
719	Barkat Textile Mills Ltd. 48 Km Lahore Multan Road Bhai Pheru	4583992	Textile Weaving	1988	461202	475	Grey Cloth	126 Looms
720	Bukhari Weaving (Pvt) Ltd. 56-K.M Ferozpur Road		Textile Weaving	1993	13025	C	Grey Cloth	60 Looms
721	Clytex Textile Ltd. 47-Km Multan Road	0300-2231431	Textile Weaving	1989	60500	C	Grey Cloth	72 Looms
722	Cnc Textiles (Pvt) Ltd. 52-Km Multan Road	5889851-3	Textile Weaving	2002	29500	245	Grey Cloth	72 Looms

Sr. No.	Name / Address of unit	Phone No. / Website	Industry	Estb. Year	Investment (Th.Rs.)	Emp	Product	Annual Installed Capacity
723	Crystal Export (Pvt) Ltd. 40-Km Ferozepur Road	4450441-4	Textile Weaving	1997	31000	108	Grey Cloth	48 Looms
724	Dab Tau Textile Industries 46 Km Ferozepur Road	0342-7358382	Textile Weaving	1994	3000	C	Grey Cloth	24 Looms
725	Elahi Textile Mills Ltd. 49 Km Multan Road Bhaipheru Phool Nagar	4844445	Textile Weaving	1990	220422	413	Grey Cloth	128 Looms
726	Ghazi Textile Ltd. 49 Km Main Multan Road	45764026	Textile Weaving	1989	50000	93	Grey Cloth	72 Looms
727	H. Jalal Din And Sons Nazsdir Manzil St.No.5 Syed Chiragh Shah Town	2720175	Textile Weaving	2004	15550	16	Grey Cloth	40 Looms
728	Haji Anwar Power Looms Kot Khu Dulat Wala	2760285	Textile Weaving	1985	16000	35	Canvas Cloth	40 Looms
729	Haji Fazal Karim Weaving Mills (Pvt) Ltd. 7 Km Raiwind Road Manga Rossaabad	5362036	Textile Weaving	1994	210312	200	Grey Cloth	100 Looms
730	Haji Muhammad Asghar Weaving Factory Fazal Khan Colony	2761027	Textile Weaving	1999	48600	34	Grey Cloth	56 Looms

Sr. No.	Name / Address of unit	Phone No. / Website	Industry	Estb. Year	Investment (Th.Rs.)	Emp	Product	Annual Installed Capacity
731	Haji Muhammad Shafi Weaving Factory Kot Amir Baz Khan		Textile Weaving	1979	20500	49	Grey Cloth	48 Looms
732	Haji Munawar Power Looms Kot Khu Dulat Ram	2770182	Textile Weaving	2005	16000	35	Canvas Cloth	40 Looms
733	Haji Rahmat Power Looms Kot Bhassar Pura	0301-7241335	Textile Weaving	1996	25000	300	Grey Cloth	600 Looms
734	Haji Shafi Muhammad Kot Bhassar Pura	2772986	Textile Weaving	2001	12000	150	Grey Cloth	200 Looms
735	Hakkim Textile Mill Ltd. 2.5 Km., Kot Radha Kishin Road Bhai Pheru		Textile Weaving	1987	192964	C	Grey Cloth	48 Looms
736	Haral Textiles Ltd. 38 Km Ferozepur Road Mustafabad	04952-450437	Textile Weaving	1989	637721	115	Grey Cloth	130 Looms
737	Hasher Fabrics (Service Fabrics) Ltd. 3-Km Manga Raiwind Road	538370-9	Textile Weaving	2004	42526	110	Grey Cloth	102 Looms
738	Islam Power Looms Ferozepur Road	2771661	Textile Weaving	2001	13700	29	Grey Cloth	128 Looms
739	Jan Mohammad Textile Mills Ltd. 58 Km Multan Road Jumber	03493-3505	Textile Weaving	1990	22000	50	Grey Cloth	72 Looms

Sr. No.	Name / Address of unit	Phone No. / Website	Industry	Estb. Year	Investment (Th.Rs.)	Emp	Product	Annual Installed Capacity
740	Jet Era Textile Mills Ltd. 3.5 Km Raiwind Manga Road	5391362	Textile Weaving	1996	472850	245	Grey Cloth	72 Looms
741	Karim Fabrics 40-Km Ferozpur Road	4450432	Textile Weaving	2003	14500	44	Grey Cloth	50 Looms
742	Kasur Fabrics (Pvt) Ltd. 46 Km Ferozpur Road		Textile Weaving	1994	10000	C	Cotton Cloth	80 Looms
743	Kohinoor Looms Ltd. 8 Km Manga Road Mouza Rosa Bhail	2005073-4	Textile Weaving	2005	70000	268	Grey Cloth	77 Looms
744	Kohinoor Raiwind Mills Ltd. 8 Km Manga Raiwind Road	5350081-82 www.kohinoorweaving.com	Textile Weaving	1994	481239	347	Grey Cloth	120 Looms
745	Kohinoor Textile Mills Ltd, Raiwind Division, 5 Km Raiwind Manga Road, Unit No. 2	5391941	Textile Weaving	1991	764428	670	Grey Cloth	216 Looms
746	Kohinoor Weaving Mills Ltd. 8 Km Manga Raiwind Road	354950-51, 042-5391941-5, www.kohinoorweaving.com	Textile Weaving	1987	883476	816	Grey Cloth	256 Looms
747	Kohinoor Weaving Textile Mills (Pvt) Ltd (Unit No.1), 5 Km Raiwind Manga Road	5391941	Textile Weaving	1988	121000	809	Grey Cloth	256 Looms

Sr. No.	Name / Address of unit	Phone No. / Website	Industry	Estb. Year	Investment (Th.Rs.)	Emp	Product	Annual Installed Capacity
748	Kronos Corporation (Pvt) Ltd. 45 Km Multan Road		Textile Weaving	1991	4146250	C	Grey Cloth	155 Looms
749	Lawprimo Textile Mills (Pvt) Ltd. 46-Km Ferozepur Road	2716413-4	Textile Weaving	2001	51000	50	Grey Cloth	104 Looms
750	Liaqat Ali Weaving Factory Kot Amir Baz Khan	2761894	Textile Weaving	1980	20690	50	Grey Cloth	46 Looms
751	M. Hanif Textile Industries 43 Km Ferozepur Road		Textile Weaving	1988	8000	C	Grey Cloth	40 Looms
752	Marjan Textile Mills Ltd. 58 Km Multan Road Bhai Pheru	4511533	Textile Weaving	1988	60000	65	Grey Cloth	54 Looms
753	Master Textile Mills Ltd 3 Km Dars Manga Raiwind Road	5392345 www.mastertextile.com	Textile Weaving	1992	399346	467	Grey Cloth	120 Looms
754	Mehak Textiles (Pvt) Ltd. 8 Km Manga Raiwind Road	5358382	Textile Weaving	1994	3000	12	Grey Cloth	24 Looms
755	Mirrot Textile Mills (Pvt) Ltd. Manga Raiwind Road Raiwind		Textile Weaving	1993	21369	C	Grey Cloth	72 Looms
756	Mohib Exports Ltd. 8 Km Manga Raiwind Road Mouza Rosa		Textile Weaving	1992	386240	C	Grey Cloth	127 Looms

Sr. No.	Name / Address of unit	Phone No. / Website	Industry	Estb. Year	Investment (Th.Rs.)	Emp	Product	Annual Installed Capacity
757	Mohsin Textile Mills (Pvt) Ltd. 40-Km Lahore Kasur Road Laleani	4450515	Textile Weaving	1992	6489	110	Grey Cloth	88 Looms
758	Mumtaz Shahbaz Textile Mills Ltd. 52 Km Multan Road Bhai Pheru		Textile Weaving	1992	208537	C	Grey Cloth	48 Looms
759	Murtaza Haseeb Textile Mills Ltd. 93.5 Km Multan Road Habibabad Chunian	6366827-6303006	Textile Weaving	1995	323654	C	Grey Cloth	72 Looms
760	Nafay Textile Industries (Pvt) Ltd. 5-Km Raiwind Road		Textile Weaving	1991	22500	42	Canvas Cloth	40 Looms
761	Nishat Chunian No.4 Ltd (Weaving) 49-Km Multan Road	4540032-7	Textile Weaving	1998	1280205	613	Grey Cloth	266 Looms
762	Noble Textile Mills Ltd. 9.5 Km Multan Road Habibabad	6366827-6303006	Textile Weaving	1993	160659	220	Grey Cloth	48 Looms
763	Oberoi Textiles Ltd. 1 Km., Manga Raiwind Road Manga Mandi	351946	Textile Weaving	1992	10669	180	Grey Cloth	48 Looms
764	Power Textile Industries Ltd. 48 Km Multan Road Bhaipheru		Textile Weaving	1995	22700	C	Grey Cloth	100 Looms

Sr. No.	Name / Address of unit	Phone No. / Website	Industry	Estb. Year	Investment (Th.Rs.)	Emp	Product	Annual Installed Capacity
765	Prudential Textile Mill (Pvt) Ltd. 47-Km Ferozepur Road	2716316	Textile Weaving	1991	22500	42	Grey Cloth	108 Looms
766	Quality Weaving (Pvt) Ltd. 49-Km.Multan Road		Textile Weaving	1920	30000	180	Cotton Cloth	54 Looms
767	Regency Textile Ltd. 38 Km Ferozepur Road Lulyani (Mustafabad)	04952-450221-2	Textile Weaving	1992	200000	C	Grey Cloth	110 Looms
768	Saad Textile Mill Pvt. Ltd 6 Km.Manga Raiwind Road	5750530-5754364	Textile Weaving	1994	8000	140	Grey Cloth	62 Looms
769	Saleem Textile (Aytex) Mills Ltd. 49 Km Multan Road		Textile Weaving	1992	52761	C	Grey Cloth	48 Looms
770	Samin Textiles Ltd. 8 Km Manga Raiwind Road	5392593-5 www.samin textile.com	Textile Weaving	1989	352836	461	Grey Cloth	186 Looms
771	Service Fabrics Ltd. Manga Raiwind Road	6304561-3	Textile Weaving	1990	34000	C	Grey Cloth	96 Looms
772	Shafi Texcel Ltd, 4.5 Km Raiwind Manga Road	5393612 www.texcel .com.pk	Textile Weaving	2003	588000	454	Grey Cloth	120 Looms
773	Shafi Textile Ltd. 4.5-Km Raiwind Road Manga Road Raiwind	5393612-3	Textile Weaving	2003	588600	454	Grey Cloth	123 Looms
774	Shah Rukh Textile Ltd. 42-Km Ferozepur Road		Textile Weaving	1999	54000	60	Grey Cloth	96 Looms

Sr. No.	Name / Address of unit	Phone No. / Website	Industry	Estb. Year	Investment (Th.Rs.)	Emp	Product	Annual Installed Capacity
775	Shahid Textile Industries 7.5-Km Haroon Nager Feroze Pur Road	716070, www.rohatex.com.pk	Textile Weaving	1989	10500	30	Grey Cloth, Canvas Cloth	110 Looms
776	Shahraj Fabrics (Pvt) Ltd, 49 Km Multan Road	540246	Textile Weaving	1997	105000	237	Grey Cloth	104 Looms
777	Shahzad Fabrics (Pvt) Ltd. 48-Km Ferozepur Road	2761923, 2760382	Textile Weaving	1987	32500	30	Grey Cloth	56 Looms
778	Shamsi Industries (Pvt) Ltd. 40-Km Ferozepur Road Mustafa Abad	4450736	Textile Weaving	1967	67000	82	Grey Cloth	96 Looms
779	Sheikh Raouf Ahmad Power Looms Kot Bhassar Pura St.No.15		Textile Weaving	1997	8000	44	Grey Cloth	44 Looms
780	Sinaco Textile Pvt. Ltd. 44 Km., Lahore Multan Road Nathey Khalsa		Textile Weaving	1993	23242	C	Grey Cloth	75 Looms
781	Superior Fabrics (Pvt) Ltd. Manga Raiwind Road Rossa Bhail	5384331, 5392521	Textile Weaving	1994	55748	200	Grey Cloth	150 Looms
782	Yasmin Weaving Industry Ltd. Raiwind Manga Road Raiwind		Textile Weaving	2000	23500	C	Grey Cloth	120 Looms

Sr. No.	Name / Address of unit	Phone No. / Website	Industry	Estb. Year	Investment (Th.Rs.)	Emp	Product	Annual Installed Capacity
783	Yousaf Weaving Mills Ltd. 49-Km Multan Road Bhai Pheru	0303-7353496, 4540083	Textile Weaving	1988	872542	680	Grey Cloth	150 Looms
784	Zar Jabeen Textile Mills (Pvt) Ltd. Raiwind Manga Road	0342-7359414	Textile Weaving	1993	26185	35	Grey Cloth	14 Looms
785	Zephyr Textiles Ltd. 1-Km Head Baloki Road Bhai Pheru	4512007	Textile Weaving	1999	379391	293	Grey Cloth	120 Looms
786	Premier Garments 41 Km. Ferozepur Road Lalyan	5761585-6 www.halac utexpremier.com	Towel	1984	59928	56	Towel	867 M.Tons
787	Shamsi Industries (Pvt) Ltd, Anwarabad Mustafa Abad		Towel	2001	12000	C	Towel	9 Th. Meters
788	Syed Machinery Ltd. 3-Km.Manga Raiwind Road	042-5391214	Tractor Parts	1987	7500	75	Tractor Parts	30000 Th. Rs.
789	Khyber Tractors Pvt. Ltd 46-6 Km Lahore Kasur Road Deh Bhallo		Tractors	1993	49536	C	Tractors	8000 Nos.
790	Ayesha Cooking Oil Ghee Mills 1 Km Off Manga Raiwind Road	5392252-3	Vegetable Ghee And Cooking Oil	1996	6672	C	Vegetable Ghee , Cookinn Oil	18000 M.Tons
791	Rehman Oil Mills Ltd. 1.5 Km Off Manga Raiwind Road	5392792	Vegetable Ghee And Cooking Oil	1998	8500	C	Cooking Oil	1800 M.Tons

Sr. No.	Name / Address of unit	Phone No. / Website	Industry	Estb. Year	Investment (Th.Rs.)	Emp	Product	Annual Installed Capacity
792	Trans Tech Ltd. 63 Km Multan Road Jamber Khurd	5111067	Vegetable Ghee And Cooking Oil	1997	34300	250	Vegetable Ghee	18000 M.Tons
793	Allied Wire & Cable (Pvt) Ltd. 33-K.M. Raeiwind Manga Road	240412-240426	Wire & Cable	1993	20000	60	Wire And Cables	1500 M.Tons
794	Cables & Conductors Ltd. 1.6 Km Off Raiwind Road	5383959-60	Wire & Cable	1994	196000	65	Wire Rope	5000 M.Tons
795	Wire Manufacturing Industry Ltd. 45 Km. Lahore Multan Road	5384180-81	Wire & Cable	1992	147766	61	Pc Wire & Strand	6000 M.Tons
796	Lahore Zippers Industries (Pvt) Ltd. 4 Km Raiwind Kot Radha Kishan Road Raiwind	5393080-1-81	Zip	1991	14000	24	Zips	60000 Rolls

Source: Directorate of Industries, Punjab

LIST OF CONTACT NUMBERS

Directorate of Industries Punjab

Director Industries, Punjab	Tel: +92 (42)-99211520-1 Fax: +92 (42)-99211522 dipunjab@gmail.com
Additional Director Industries	Tel: +92 (42)-99211531 +92 (42)-99212752 Fax: +92 (42)-99212753
Joint Director (Development)	Tel: +92 (42)-99211526
Senior Economist	Tel: +92 (42)-99211533
Staff Economist	Tel: +92 (42)-99211534
Deputy Director (Admin)	Tel: +92 (42)-99211528
Deputy Director (Development)	Tel: +92 (42)-99211528
Deputy Director (Planning)	Tel: +92 (42)-99211530
Assistant Director (Admin)	Tel: +92 (42)-99211529
Assistant Director (Planning)	Tel: +92 (42)-99211530
Assistant Director (Statistics)	Tel: +92 (42)-99211524
Assistant Registrar	Tel: +92 (42)-99211523
Librarian	Tel: +92 (42)-99213010
District Officer (E&IP), Kasur	Tel: +92 (49)-9239073, 2770695

Other Relevant Departments

Department	Contact
Secretary, Industries, Commerce & Investment Department, Govt. of the Punjab	Tel: +92 (42) 99210534-5 Fax: +92 (42) 99210536
Punjab Board of Investment & Trade (PBIT)	Tel: +92 (42) 99205201 info@pbit.gov.pk
Small & Medium Enterprises Development Authority (SMEDA)	Tel: +92(42)-111-111-456 Fax: +92 (42) 36304926-7 info@smeda.org.pk
Punjab Industrial Estates Development and Management Company (PIEDMC)	Tel: +92 (42) 35297203-6 Fax: +92 (42) 35297207 info@pie.com.pk
Punjab Small Industries Corporation (PSIC)	Tel: +92 (42) 99200453

BIBLIOGRAPHY

- Punjab Development Statistics 2011, Bureau of Statistics, Government of the Punjab
- The Urban Unit, Planning & Development Department, Government of the Punjab.
- Technical Education and Vocational Training Authority
- Chief Inspector of Boilers, Directorate of Industries, Punjab
- Directorate of Agriculture, Crop Reporting Service, Punjab
- Chief Conservator of Forest Planning, Monitoring and Evaluation, Punjab
- Directorate General (Ext), Livestock & Dairy Development Punjab
- Directorate General Mines & Minerals, Punjab
- Punjab Small Industries Corporation
- Punjab Industrial Estates Development and Management Company
- Faisalabad Industrial Estates Development and Management Company
- Industries, Commerce & Investment Department, Government of the Punjab
- District Officers (Enterprise & Investment Promotion) as well as District Administration
- Export Processing Zones Authority
- Board of Investment, Government of Pakistan
- Website of Stat Bank of Pakistan
- Ministry of Commerce, Government of Pakistan
- Directory of Industrial Establishments Punjab, Directorate of Industries, Punjab

