

# District Pre-Investment Study - 2012

---

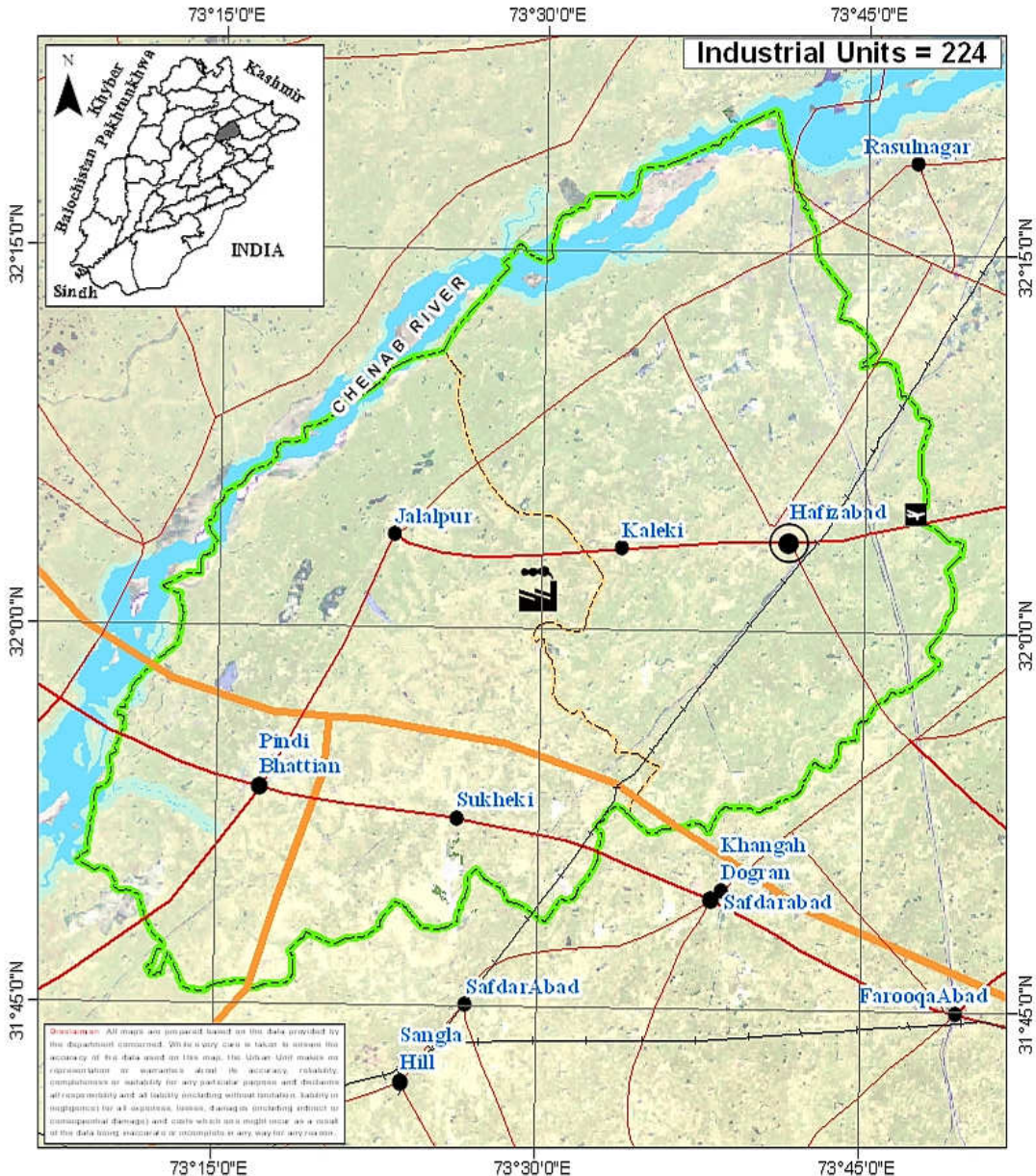
Hafizabad



---

Directorate of Industries, Punjab  
Poonch House, Multan Road, Lahore.

# District Hafizabad



Map No.: HAF-01

Date: 21-01-2013

Scale: 1:750,000

0 5 10

Kilometers

## Legend

### Administrative:

- Provincial Boundary
- District Boundary
- Tehsil Boundary
- Divisional Headquarter
- District Headquarter
- Tehsil Headquarter

### Transportation:

- Motorway
- Provincial Highway
- Primary Road
- Intercity Road
- Pakistan Railway
- Airport

### Landuse:

- River
- Agricultural Land
- Forest
- Industrial Estate



**THE URBAN UNIT**

Urban Survey, Planning & Management Institute of the Ministry of Urban Affairs, Government of Punjab



## Director's Message

After spending past two years in Directorate of Industries, Punjab, I feel very privileged to be writing this message as Director Industries, Punjab.



This is the time we publish the 7<sup>th</sup> edition of the District Pre-Investment Studies of 36 Districts of Punjab, which has now become synonymous with our commitment to helping Industrialists, new entrepreneurs as well as Researchers. As Director Industries Punjab, I have seen much change, like:

- Relocation plan for the industrial units located within residential areas to industrial estates / positive areas declared by the District Governments.
- Adaptation of Boilers & Pressure Vessels Ordinance 2002.
- Conduct of Census of Manufacturing Industries.
- A scheme "Improvement and Up-gradation of Boilers Inspection Wing" has been approved by the Planning & Development Department, Government of the Punjab with the cost of Rs.10 Million.
- A Scheme "Sports Goods and Material Testing Laboratory" is under process in Planning & Development Department, Government of the Punjab. The estimated cost of the scheme is Rs.450 Million.
- The proposal for Capacity Building of Directorate of Industries Punjab is under process in Industries, Commerce & Investment Department, Government of the Punjab with the estimated cost of Rs.109.75 Million.
- We launch our website [www.doi.pitb.gov.pk](http://www.doi.pitb.gov.pk).

Looking ahead, we are focused on accelerating the execution of growth and promote industrial investment in the province. I am incredibly excited about this and truly believe the best of time for industrial investment is yet to come, Insha Allah.

**(Muhammad Siddique Sheikh)**  
Director Industries, Punjab

# Preface

Pre-investment studies for the districts in the Punjab were first published by the Directorate of Industries and Mineral Development, Punjab in the year 1979, with the prime objective of providing data which might interest private entrepreneurs and the framers of the Provincial and National Strategies in the industrial sector.

The second, third, fourth, fifth and sixth series of Pre-investment Studies for all districts of Punjab were published in 1983, 1992, 2002, 2006 and 2009 respectively. The present edition is seventh in the series.

This study basically updates the information contained in sixth series of district pre-investment studies. Efforts have been made to provide latest information collected through published sources, offices of the respective Government Departments/Agencies and District Offices of Industries Department. Quality addition of Industrial Policy Framework, recently promulgated Special Economic Zone Act 2012, Strategic Trade Policy Framework (2012-15) and Digital Maps by Urban Unit has improved these studies significantly.

The information has been updated in respect of population, manpower, production of agriculture crops, fruits, vegetables, livestock, forest resources, ores/minerals, infrastructural facilities such as technical/vocational training facilities, communication net-work, sub-soil water quality/effluent disposal

facilities, power/gas supply, tele-communication facilities, industrial estates, dry ports, industrial financing facilities, loaning scheme of PSIC, industrial policy, investment policy, fiscal incentives, Special Economic Zone Act 2012 and Strategic Trade Policy Framework (2012-15) etc. New policy measures regarding declaration of negative and specified positive areas have also been incorporated.

The study also includes information regarding existing industrial pattern, industry wise installed capacities and details regarding existing major industrial units in each district.

Effort has been made to identify various industries considering the availability of raw materials, skilled labour, linkage between industrial units and local/national/international demand. The suggested industries are, however, merely of indicative nature and it is advisable that prospective investors should conduct detailed feasibility report before making final decision for investment.

It is worthwhile to mention that industrial sector in Punjab has grown gradually from 6,223 industrial units in 1975 to 17,857 industrial undertakings in 2010. Sectoral growth has also been registered, resulting in substantial value addition. Value addition chain can be maximized by processing the agricultural industrial waste like rice husk, cotton stock, maize and corn cob. Herbal products is another untapped area. Live Stock, Dairy Development and poultry are fast growing sectors. Processing of food products can fetch handsome dividends. Currently information technology sector is growing by 39% annually in Pakistan. Fashion

industry is also developing rapidly. Similarly, chemical sector has lot to offer by utilizing the available mineral resources as raw material.

Issue of energy shortage can be addressed by dealing with power generation as an industry. Local as well as foreign investors have golden opportunity to set up power generation stations based on coal and other alternate fuels, under the captive power plants policy allowed in the newly promulgated SEZ Act, 2012. Punjab offers very good opportunity to the local as well as foreign investors to set up small, medium and heavy industries in variety of sectors. It has a growing market of over 90 million consumers, abundant manpower / labour force and cheap raw material with reasonably controlled law & order.

The Industries, Commerce & Investment Department has sufficient institutional frame work of attached and autonomous bodies to look after the industrial issues. Directorate of Industries, Small Industries Corporation (PSIC), Board of Investment (PBIT), Punjab Industrial Estates Development and Management Company (PIEDMC), Faisalabad Industrial Estates Development and Management Company (FIEDMC) have blend of professionals from the public as well as private sector. These legal entities are working in close coordination with the Chambers of Commerce and Industries systematically to promote industrialization and trade.

Development schemes regarding establishment of Industrial Resource Centre at the Directorate of Industries, setting up Sports & Material Testing Lab at EPZ, Sambrial and Industrial Safety Institute are under consideration with the Planning and Development

Department. Completion of these schemes will definitely help in promotion of industrialization process with enhanced industrial safety.

I must record my appreciation to Mr. Muhammad Akram Awan, Senior Economist, who effectively planned, coordinated and provided the guidance to his team members for completion of this study. Credit also goes to Mr. Muhammad Jamil Chishty, Staff Economist for his dedicated support rendered in the completion process of this study and Mr. Waseem Haider, Stenographer, for his tireless typing and composition work on computer.

I am grateful to all the District Officers, Enterprise & Investment Promotion who provided the relevant information of their respective districts for incorporating in pre-investment studies. I am also thankful to various Provincial Departments for supplying the required data to the Directorate of Industries. My special thanks are due to Dr. Nasir Javed, Project Director, Urban Unit for the provision of digital maps and the Punjab Printing Press.

Any suggestion for the improvement of the study will be welcomed.

Dec. 31, 2012

**(Muhammad Siddique Sheikh)**  
Director Industries, Punjab

# Contents

---

Section	Page
<b>District at a Glance</b>	<b>1</b>
<b>1. Geographical Conditions</b>	<b>3</b>
1.1 Brief Description of the District	3
1.2 Climate and General Soil Conditions	3
<b>2. Man-Power</b>	<b>5</b>
2.1 Total Population of the District	5
2.2 Man-Power Availability	5
2.3 Traditional Crafts	7
2.4 Geographical Indications	7
<b>3. Natural Resources</b>	<b>9</b>
3.1 Agriculture	9
a) Main Crops	9
b) Main Fruits	10
c) Main Vegetables	10
3.2 Forests	11
a) Location of Forests and Area under Afforestation	11
b) Production of Timber and Fire-wood	12
3.3 Livestock Population	12
a) Animal Population	12
b) Poultry Population	12
c) Availability of Hides/Skins & Slaughter House Wastes	13
d) Production of Wool	13
3.4 Ores and Minerals	13

<b>4. Infrastructural Facilities</b>	<b>15</b>
4.1 Communication Network	15
a) Road Links	15
b) Rail Links	15
4.2 General Quality and Availability of Sub Soil Water	15
4.3 Effluent Disposal Facilities	16
4.4 Power Supply	16
4.5 Natural Gas Availability	16
4.6 Telecommunication Facilities	16
4.7 Social Infrastructural Facilities	16
4.8 Industrial Estates	17
4.9 Dry Port	17
4.10 Industrial Policy	17
4.11 Declaration of Negative Areas	22
4.12 Declaration of Positive Areas	23
4.13 Incentives for Investors to set a unit in EPZs	24
4.14 Pakistan's Investment Policy – Key Features	27
4.15 Industrial Financing Facilities	29
4.16 Salient Features of Loaning Scheme of PSIC	32
4.17 Salient Features of the SEZ Bill 2012	34
4.18 Strategic Trade Policy Frame Work (2012-2015)	36
<b>5. Existing Pattern of Industrial Development</b>	<b>41</b>
5.1 Description of Existing Industry	41
<b>6. Future Industrial Potential</b>	<b>43</b>
6.1 Agriculture	43
6.2 Livestock	44
6.3 Industry	44
6.4 Demand Based Industries	45
6.5 List of Identified Projects	45
<hr/>	
<b>Annex</b>	<b>Page</b>
<b>Directory of Industrial Establishment</b>	<b>47</b>
<b>List of Contact Nos.</b>	<b>67</b>
<b>Bibliography</b>	<b>69</b>

**DISTRICT AT A GLANCE**

1	Population (000 Numbers)	:	1,038
2	Area (Square Kilometres)	:	2,367
3	Population Density (per sq. km.)	:	439
4	Tehsils / Towns	:	Hafizabad and Pindi Bhattian
5	Main Crops	:	Wheat, Sugarcane and Rice.
6	Main Fruits	:	Guava and Citrus.
7	Main Vegetables	:	Onion, Potato, Cauliflower, Carrot, Matter Green and Turnip.
8	Forest Resources (Area in Acres)	:	2154
9	Mineral Resources	:	Nil
10	Total Metalled Roads (KM)	:	1,142.02
11	No. of Grid Stations	:	5
12	No. of Telephone Exchanges	:	32
13	Number of Industrial Units (Large Medium and Some Small Selected Sectors)	:	224

- 14 Type of Industrial Units : Agricultural Implements, Cold Storage, Flour Mills, Industrial Machinery, Jute Textile, Power Generation, Rice Mills, Sizing of Yarn and Textile Composite.

## **CHAPTER - I**

### **GEOGRAPHICAL CONDITIONS**

#### **1.1 BRIEF DESCRIPTION OF THE DISTRICT**

The river Chenab forms the Northern and North-Western boundary of the district. On the North-West touches Mandi Babauddin, on the South lies Sheikhpur, on the West Sargodha district and on the East Gujranwala district.

District Hafizabad is spread over an area of 2,367 square Kilometres and comprises the two tehsils of:

- i) Hafizabad
- ii) Pindi Bhattian

#### **1.2 CLIMATE AND GENERAL SOIL CONDITIONS**

The climate of the district is hot and dry during the summer and moderately cold in the winter. Owing to the proximity of the hills there is more rainfall in the East than the Western part of the district. May and June are the hottest months with temperature rising up to 48°C. Monsoon starts usually from the midst of July and continues till September.

The soil is alluvial and fertile. It is a flat strip of land running roughly East to West.



## CHAPTER - II

### MAN POWER

#### 2.1 TOTAL POPULATION OF THE DISTRICT

According to Punjab Development Statistics 2011, total population of Hafizabad district is 1,038 thousand persons out of which 540 thousand are males and 498 thousand are females. Density of population in the district is 439 persons per square kilometre.

Tehsil wise distribution of Urban and Rural population is given in Table-1

**TABLE-1**

#### Town-Wise Distribution of Urban & Rural Population

Town	Population (Thousand Nos.)		
	Urban	Rural	Total
Hafizabad	184	419	603
Pindi Bhattian	99	336	435
<b>Total</b>	<b>283</b>	<b>755</b>	<b>1038</b>

Source: Punjab Development Statistics, 2011

#### 2.2 MAN POWER AVAILABILITY

As regards availability of skilled labour, there are 05 technical / commercial / vocational institutions (3 for men and 2 for women) imparting training in

various trades e.g. mechanical, auto-engineering, welding and commerce. Vocational institutions for women impart training in hand/machine embroidery, stitching and knitting. In all about 738 trained technicians/artisans/workers are turning out every year. The details are given in Table-2.

TABLE - 2

### Commercial and Technical Institutions

Sr #	Name & Description of Commercial / Technical Training Institutions	Types of Training Courses Offered	Duration of Course	Average No of Students Enrolled / Session
<b>For Men</b>				
1	Govt. Institute of Commerce, Hafizabad	D.Com	24 Months	231
2	Govt. Technical Training Centre (DMTC)/ VTC, Near Chungi Gujranwala Road, Hafizabad	Motorcycle Mechanic, Welder, Turner, Wireman, Plumber.	6 Months	117
3	Govt. College of Technology, Pindi Bhattian.	Electronics Telecom, MS IT Academy.	3 to 36 Months	101
<b>For Women</b>				
4	Govt. Vocational Training Institute, Sukheki Chowk, Near	Vocational Diploma, Domestic Tailoring,	6 to 12 Months	159

	Qabarstan Sukheki.	Beautician.		
5	Govt. Vocational Training Institute, Veniki Chowk, Post Office, Road, Hafizabad.	Vocational Diploma, Beautician, Tailoring.	3 to 24 Months	130

Source: TEVTA

### 2.3 TRADITIONAL CRAFTS

Hafizabad is an agricultural district; no traditional craft of any significance is in existence.

### 2.4 GEOGRAPHICAL INDICATIONS

The Project Director (Geographical Indications), Industries, Commerce & Investment Department, Government of the Punjab has identified that there is no Geographical Indications in the district.



## CHAPTER - III

### NATURAL RESOURCES

#### 3.1 AGRICULTURE

##### a) Main Crops

Wheat, Sugarcane and Rice (Cleaned) are the main crops grown in the district. Production of these crops during the period 2008-09 to 2010-11 is given in Table - 3.

**TABLE-3**

**Production of Main Crops  
(2008-09 to 2010-11)**

Crop	Production (Th. M.Tons)		
	2008-09	2009-10	2010-11
Wheat	464.82	412.28	486.75
Sugarcane	230.67	214.24	206.22
Rice (cleaned)	245.87	276.9	262.73

Source: Directorate of Agriculture, Crop Reporting Service, Punjab

Besides, Bajra, Tobacco, Maize, Jawar, Mash, Moong, Masoor, Gram, Maize, Oil Seed such as Rape/Mustard and Sunflower are also grown in minor quantities in the district.

## b) Main Fruits

Guava and Citrus are main fruits grown in the district. Production of these fruits during the period 2008-09 to 2010-11 is given in Table - 4

**TABLE-4**

**Production of Main Fruits  
(2008-09 to 2010-11)**

Fruit	Production (M.Tons)		
	2008-09	2009-10	2010-11
Guava	4864	4854	4439
Citrus	1376	1888	1793

Source: Directorate of Agriculture, Crop Reporting Service, Punjab

Besides, Mango, Banana, Peach, Jaman and pomegranate are also grown in minor quantity in the district.

## c) Main Vegetables

Onion, Potato, Cauliflower, Carrot, Matter Green and Turnip are main vegetables grown in the district. Production of these vegetables during the period 2008-09 to 2010-11 is given in Table - 5

**TABLE-5**

**Production of Main Vegetables  
(2008-09 to 2010-11)**

Vegetable	Production (M.Tons)		
	2008-09	2009-10	2010-11
Onion	4639	4468	5225
Potato	1378	21495	1824
Cauliflower	3065	2889	2929
Carrot	2504	2372	2460
Matter Green	239	220	107
Turnip	932	944	1316

Source: Directorate of Agriculture, Crop Reporting Service, Punjab

Besides, Chillies, Tomato, Garlic and Ladyfinger are also grown in the district in minor quantities.

### 3.2 FORESTS

#### a) Location of Forests and Area under Afforestation

An area of 2,154 Acre is under forests, which is about 0.37% of the total area of the district. There is also linear plantation of 506 Km alongside the roads/rails/canals in the district. Trees grown in the area are Kikar and Shisham.

**b) Production of Timber and Firewood**

The production of Timber and Fire-Wood in the district during the period 2008-09 to 2010-11 is not mentionable.

**3.3 LIVESTOCK POPULATION****a) Animal Population**

The animal population of the district is given in Table - 6.

**TABLE - 6****ANIMAL POPULATION**

<b>Animals</b>	<b>Population (Th Heads)</b>
Cattle	222
Buffaloes	581
Sheep	25
Goats	125

Source: Livestock & Dairy Development Department.

**b) Poultry Population**

As per Punjab Development Statistics 2011 there are 184 broiler and 21 layer poultry farms in district Hafizabad having rearing capacity of 28,644 and 69 thousand birds respectively.

c) Availability of Hides / Skins and Slaughter House Wastes

As per Punjab Development Statistics 2011, 1,15,800 animals were slaughtered in recognized / un-recognized slaughter houses in the district during the year 2009-10 which is a reasonable estimate of the availability of hides and skins in the district.

The availability of slaughter house by - products is estimated as under:-

Blood	42.85 M.Tons
Bones	201.15 M.Tons
Tallow	37.87 M.Tons

d) Production of Wool

The sheep population of 25 thousand heads in the district is expected to yield about 25 M.Tons of coarse wool annually.

### 3.4 ORES AND MINERALS

There is no indication of presence of any major minerals in the district.



## **CHAPTER - IV**

### **INFRASTRUCTURAL FACILITIES**

#### **4.1 COMMUNICATION NETWORK**

##### **a) Road Links**

The district has a total metalled road-length of 1142.02 Kilometres. The District is linked with Gujranwala, Sargodha, Sheikhupura, Mandi Bahauddin, Faisalabad and Jhang districts through metalled road.

##### **b) Rail Links**

The district is linked with Gujranwala and Faisalabad districts through railway net-work.

#### **4.2 GENERAL QUALITY AND AVAILABILITY OF SUB-SOIL WATER**

The sub-soil water in the district is generally suitable for industrial utilization except in some areas where under ground water needs pre-treatment for industrial consumption.

### **4.3 EFFLUENT DISPOSAL FACILITIES**

The locations of existing nullahs in the district are suitable for disposal of industrial effluent. However, effluent may be discharged into these nullahs after pre-treatment and with prior written permission from Irrigation and Power Department, Government of Punjab.

### **4.4 POWER SUPPLY**

There are 5 grid stations in the district ranging in capacity from 66 KV to 132 KV.

### **4.5 NATURAL GAS AVAILABILITY**

At present natural gas is available in the district.

### **4.6 TELE-COMMUNICATION FACILITIES**

At present there are 32 telephone exchanges operating in the district, ranging in capacities from 50 lines to 6430 lines. Cellular phone services are available in the district.

### **4.7 SOCIAL INFRA-STRUCTURAL FACILITIES**

Social infra-structural facilities available in the district are given in Table - 7.

**TABLE - 7****SOCIAL INFRA-STRUCTURAL FACILITIES**

Tehsil	Primary / Middle / high / higher secondary School	College	Hospital	Police station	Railway stations	Post office	Banks
Hafizabad	485	2	1	5	5	5	9
Pindi Bhattian	418	2	1	5	2	3	8
Total	903	4	2	10	7	8	17

Source: Punjab Development Statistics 2011 / Respective District Offices.

**4.8 INDUSTRIAL ESTATE**

There is no Industrial Estate operating in the district.

**4.9 DRY PORT**

There is no dry port in the district.

**4.10 INDUSTRIAL POLICY**

- Foreign investors are permitted to hold 100% of the equity of industrial projects without any permission of the Government.
- No prior Government sanction is required for establishment of an industry outside Ex-

Municipal Territorial Limits of Town Committees / Municipal Corporation irrespective of its cost and size except the following covered under schedule 'C':-

- a. Arms & Ammunition.
  - b. Security Printing Currency & Mint.
  - c. High Explosives.
  - d. Radio Active Substances.
  - e. Alcoholic Beverages or Liquors.
1. No industrial unit mentioned in Schedule-A of the notification No. AEA-III-4-3-9/91, dated 30.09.2002 or industrial unit exceeding a total cost of Rs. 100.00 million shall be set up within 10 miles (16 Kms) of international border:

**List of Manufacturing Industries**

- a) Basic Metal Industry.
- b) Petro-Chemical Industries (Excluding Products Industries).
- c) Large size Machine Tool Factories (Limit of Investment to be determined).
- d) Heavy Foundry Works.
- e) Heavy Electric Complexes.
- f) Heavy Mechanical Complexes.
- g) Electronics Industries.
- h) Major Vehicle Assembly Plants.
- i) Ordnance Factories.
- j) Explosives, Nitric acid and Sulphuric acid plants.
- k) Vehicular Tires and Tubes Industries.

- l) Locomotives and Railway Carriage manufacturing plants.
  - m) Government Mint.
  - n) Security Printing Press involved in whole time printing of sensitive documents / currency notes.
  - o) Manufacture of optical glass and optics.
  - p) Nickle cadmium battery industries.
  - q) Nuclear / Separation Plants.
  - r) Large Power Generating Stations.
  - s) Large oil Storage units.
  - t) Oil refineries.
2. No industrial unit shall be set up in areas affected by flood flowing transversely in the strip of one mile of either side across the Grand Trunk Road from Shahdara Town to Muridke Town, without prior permission of the Provincial Government.
3. According to the notification No. AEA-III-3-5/2003 (Vol-III), dated 06.12.2006, “no new sugar mill shall be setup and no enlargement in capacity of the existing sugar mills is allowed in the Province”.
4. Each district Government may declare “negative area” for industry. Such “negative area” be determined by a District Committee after consultation with all stake-holders in light of general policy guidelines issued by the Industries, Commerce & Investment

Department and exemptions allowed under Schedule 'B' of this Notification as under:

**List of Service Industries**

- a) Furniture (excluding Band Saw) and also excluding storing Timber / Wood.
- b) Tailoring/ Readymade garments.
- c) Laundry / Dry Cleaning.
- d) Bakery (excluding confectionery).
- e) Syrups ( excluding squashes)
- f) Cosmetics.
- g) Service workshop.
- h) Cereal Products like vermicilles.
- i) Candles making.
- j) Printing and Packaging.
- k) Hand loom carpet weaving.
- l) Hotels.
- m) Bidi manufacturing.
- n) Handmade shoes / shoe repairing workshop.
- o) Spooling and thread balls.
- p) Small Hosiery units employing not more than 10 workers.
- q) Atta Chakkies.
- r) Installation of Chaff cutters.
- s) Cotton Grading.
- t) Other small industrial undertakings which do not fall under the Sixth schedule of the Punjab Local Government Ordinance, 2001.

“Other small industrial undertakings” would mean an industrial undertaking in which the total fixed assets (including the cost of land) do not exceed Rs.1.0 million (Rupees one million).

5. No industrial unit mentioned in Schedule ‘C’ of this Notification shall be set up anywhere in the Punjab without prior approval of the Government.
6. The Government reserves the right to refuse establishment / enhancement of any industrial undertaking which is in contravention of the public interest, ecology or any other law / rules for the time being in force.
7. The Government may relax any of the provisions of this notification in case of a particular unit or industry or class of units or industries.
8. NOC from Environment Protection Department, Govt. of the Punjab is required for setting up new Industries.
  - Tourism has been given the status of industry in accordance with Ministry of Industries & Production Circular No. 1-129/99-INV-IV dated 2<sup>nd</sup> August 1999.

- The Housing and Construction Sector has also been declared as industry (Finance Division Notification No. 10(10)/IF-11/98, dated 07.04.1999 and 04.06.1999.
- In accordance with Government notification No. 3(2)/97-INV-IV dated 05.05.1997, Computer Software and Information Technology (IT) have been declared as Industry.

#### **4.11 DECLARATION OF NEGATIVE AREAS**

In pursuance of the Clause 4 of the Location Policy notified on 30-09-2002, by the Industries Commerce & Investment Department, Government of the Punjab, the District Govt. Hafizabad has declared the following negative areas:-

- a) Area falling under defunct Municipal/Town Committee i.e. Hafizabad, Pindi Bhattian, Jalalpur Bhattian, Sukheke Mandi and Kaleke Mandi.
- b) Area Upto 3 km. from the limit of defunct Municipal/Town Committees.
- c) Area up to 5 km. from the limit of Military Cantt. And PAF Base.
- d) Area up to 5 km. from left side of river Chenab Bank
- e) Area up to 1 km. from the limit of cluster of 150 houses.

#### **4.12 DECLARATION OF SPECIFIED POSITIVE AREAS**

Vide Finance Act, 2008, the Government of Pakistan has enacted a new section “23A” in the Income Tax Ordinance 2001. The Section “23A” is reproduced below:-

“First year allowance.- (1) Plant, Machinery and equipment installed by any industrial undertaking setup in specified rural and under developed areas, and owned and managed by a company shall be allowed first year allowance in lieu of initial allowance under Section 23 at the rate specified in Part II of the third schedule against the cost of the “eligible depreciable assets” put to use after July 1<sup>st</sup>, 2008.

(2) The provision of Section 23 except sub-sections (1) and (2), thereof, shall mutatis mutandis apply.

The Federal Government may notify “Specified areas” for the purpose of sub-section(1)”

In pursuance of the above mentioned notification District Government Hafizabad has identified and

approved the following specified positive areas for setting up industrial undertakings:-

### ***Hafizabad***

- i) On both sides of the Ali Pur Chatha, Vanike Road, for village Qadir Abad Colony to village Thathi Anoke Sing (about 12 kms).
- ii) On both sides of Ali Pur Road from village Bateray to Chak Kharal (about 15 kms).
- iii) On both sides of Kot Sarwar Interchange road form village Madhrianwala to Tibba Kaleke (about 10 kms).
- iv) On both sides of Gujranwala road from village Chak Chatha to village Iqbal Nagar (abut 15 kms).
- v) On both sides of road form village Chak Chatha to Sheikhupura (about 5 kms).
- vi) On both sides of Hafizabad to Jalapur Bhattian road form 3 kms to 26 kms (23 kms).

### ***Pindi Bhattian***

- i) On both sides of Pindi Bhattian Sargodha road form Pindi Bhattian Bye-Pass to village Chowki Sukheiki (about 15 kms).
- ii) On both sides of Pindi Bhattian to Jalapur Bhattian road form 3 kms to 16 kms (about 13 kms).

## **4.13 INCENTIVES FOR INVESTORS TO SETUP A UNIT IN EPZs**

- a) According to EPZs Authorities, following incentives are available in the Export Processing Zones
1. 100% ownership rights.
  2. 100% repatriation of capital & profits.
  3. No minimum or maximum limit for investment.
  4. Duty free imports of machinery, equipment & material.
  5. No sales tax on input goods including electricity & gas bills.
  6. Obsolete/old machinery can be sold in domestic market of Pakistan after payment of applicable duties & taxes.
  7. Freedom from national import restrictions.
  8. Foreign exchange control regulation of Pakistan not applicable.
  9. Defective goods/waste can be sold in domestic market after payment of applicable duties, maximum upto 3% of total value of export.
  10. Duty free vehicle allowed under certain conditions. After 5 years of use, vehicles can be disposed off in domestic market on payment of duty on depreciated value.
  11. Domestic market of Pakistan available on same conditions as for imports from other countries.
  12. Units operating in EPZs can undertake sub-contracting for units of tariff area

subject to payment of duty and taxes on value addition only.

13. Only EPZA is authorized to collect Presumptive tax at the time of export of goods which would be final tax liability.
14. EPZ units allowed to supply goods to Custom manufacturing bonds.
15. Production oriented labour laws to be solely regulated by the Authority.
16. EPZ manufacturer will be treated at par with bonded manufacturers in tariff area for any future incentives to be announced for exporters.
17. Relief from double taxation subject to bilateral agreement.

b) Facilities to Investors for setting up a unit in EPZs of Pakistan.

1. One window service and simplified procedure.
2. All infrastructural facilities like water, electricity, gas, telex, fax and telecommunication system are made available by EPZA.
3. Skilled & un-skilled labour available in abundance.
4. Sub-contracting without limit on variety and quantity is allowed outside the zone as well as within the zone.

5. The garment manufacturing units located in Export Processing Zones are eligible to participate in auction of quotas.
6. GSP concessions given by various countries to imports from Pakistan are available to the manufacturers in the zone.
7. Peaceful, secure and environmentally protected / pollution free work area.
8. Inter-unit transfer of finished goods among exporting units allowed.

#### **4.14 PAKISTAN'S INVESTMENT POLICY - KEY FEATURES**

##### ***General***

- The investment policy is liberal and business friendly as it has been designed in consultation with businessmen, investors and representative forums as well as the Multinational Companies (MNCs).
- It provides equal investment opportunities for both domestic and foreign investors.
- All economic sectors open for FDI (Foreign Direct Investment).
- 100% foreign equity allowed.
- No government sanction required.
- Foreign investment on repatriable basis is allowed in all economic sector including manufacturing, agriculture, services, infrastructure and social sectors.

- Foreign investment in Agriculture projects allowed on joint-venture basis by associating minimum local equity of 40%.
- Remittance of Royalty, Technical & Franchise Fee, Capital, Profits, Dividends allowed.
- Minimum foreign equity for non-manufacturing including service sectors has been reduced from \$ 0.3 to \$ 0.15 million. In Agriculture, infrastructure and social sectors, it is \$ 0.3 million.

### ***Tariff and Tax Incentives***

- To keep Pakistan competitive in international tariff 5% customs duty has been allowed on import of plant and machinery which is not manufactured locally.
- Sales tax 0% across the board.
- 0% duty on import of raw material for export industry.
- 0% duty on import of agriculture machinery.
- Tax relief in shape of Initial Depreciation Allowance (IDA) has been provided as 50% of machinery cost across the board.
- Tax relief has also been provided for expansion and Balancing, Modernization & Replacement (BMR) in existing industries.

### ***Policy Package of Pakistan***

Policy Parameters	Mfg. Sector	Non-Manufacturing Sectors		
		Agriculture	Infrastructure & Social	Services including IT &

				Telecom Services
Govt. Permission	Not required except for specified industries*	Not required except specific licences from concerned agencies.		
Remittance of capital, profits, dividends, etc.	Allowed	Allowed		
Upper Limit of foreign equity allowed	100%	100%	100%	100%
Minimum Investment Amount (M \$)	No	0.3	0.3	0.15
Customs duty on import of PME**	5%	0%	5%	0-5%
Tax relief (IDA***, % of PME cost)	50%	50%		
Royalty & Technical Fee	No restriction for payment of royalty & technical fee.	Initial lump-sum up to \$100,000 Max Rate 5% of net sales - Initial period 5 years		

\* Specified Industries:

- i) Arms and ammunitions
- ii) High Explosives
- iii) Radioactive substances
- iv) Security Printing
- v) Currency and mint

\*\* PME = Plant, Machinery and Equipment

\*\*\* IDA = Initial Depreciation Allowance

#### 4.15 INDUSTRIAL FINANCING FACILITIES

Following Financial Institutions in the country are providing various types of fixed investment industrial financing in the foreign and local currency to the industrial sector for establishment of new industrial units as well as for Expansion, Balancing, Modernization and Replacement (BMR) of existing industrial units within the frame-work of industrial/financial policies of the Government of Pakistan.

- 1 AlBaraka Bank (Pakistan) Limited.
- 2 Allied Bank Limited.
- 3 Askari Bank Limited.
- 4 Bank Alfalah Limited.
- 5 Bank Al-Habib Limited.
- 6 Bank Islami Pakistan Limited.
- 7 Barclays Bank PLC.
- 8 Burj Bank Limited.
- 9 Citi Bank N.A.
- 10 Deutsche Bank A.G.
- 11 Dubai Islamic Bank Pakistan Limited.
- 12 Faysal Bank Limited.
- 13 First Women Bank Limited.
- 14 Habib Bank Limited.
- 15 Habib Metropolitan Bank Limited.
- 16 HSBC Bank Middle East Limited.

- 17 Industrial and Commercial Bank of China
- 18 Industrial Development Bank of Pakistan.
- 19 JS Bank Limited.
- 20 KASB Bank Limited.
- 21 MCB Bank Limited.
- 22 Meezan Bank Limited.
- 23 National Bank of Pakistan.
- 24 NIB Bank Limited.
- 25 Oman International Bank S.A.O.G.
- 26 S.M.E. Bank Limited.
- 27 Samba Bank Limited
- 28 Silk Bank Limited.
- 29 Sindh Bank Limited.
- 30 Soneri Bank Limited.
- 31 Standard Chartered Bank (Pakistan) Limited.
- 32 Summit Bank Limited
- 33 The Bank of Khyber
- 34 The Bank of Punjab
- 35 The Bank of Tokyo-Mitsubishi Limited.
- 36 The Punjab Provincial Cooperative Bank Limited.
- 37 United Bank Limited.
- 38 Zarai Taraqiati Bank Limited.

---

Source: State Bank of Pakistan

***List of Development Financial Institutions (DFIs)***

- 1 Bankers Equity Limited.
- 2 House Building Finance Company Limited.
- 3 Pak Brunei Investment Company Limited
- 4 Pak-China Investment Company Limited.
- 5 Pak Oman Investment Company Limited.
- 6 PAIR Investment Company Limited.
- 7 Pakistan Kuwait Investment Company Limited.
- 8 Pak-Libya Holding Company Limited.
- 9 Saudi Pak Industrial & Agricultural Investment Company Limited.

---

Source: State Bank of Pakistan

Besides the financial institutions mentioned above a number of Leasing Companies, Modaraba Companies, Investment Banks are also providing financing facilities to the industrial sector. Punjab Small Industries Corporation also extends financial assistance to the small/cottage industrial units.

#### **4.16 SALIENT FEATURES OF LOANING SCHEME OF PSIC**

Punjab Small Industries Corporation (PSIC) is a body corporate enacted in 1973. One of core functions of PSIC is financial assistance programme for prospective entrepreneurs, skilled youth, artisans and craftsmen all over the Punjab. The priority sectors are as under:

- Service Industries.
- Agro / Agro Support Industries.
- Food Processing Industries.
- Export Oriented Industries.
- Import Substitution Industries.
- Information Technology (IT) Project.
- Handicraft Industry.
- Women Enterprises.

PSIC started credit assistance programme during 1984 and completed 13 schemes up till now. An amount of Rs. 4079 Million has been disbursed to 19,580 entrepreneurs in 36 Districts of Punjab with the recovery rate of 88% that indicates proper utilization of loans.

The maximum loan limit is Rs.3 Million with debit equity ratio of 60:40. The credit assistance facility available for new projects, BMR and Working Capital. The markup rate varies from 0% to 12%. The repayment period of loan is from 3 years to 6 years with grace period of 3 months to 6 months.

Recently, Government of Punjab has provided an amount of Rs. 2000 Million for disbursement through Service Provider Organization i.e. M/s Akhuwat to un-employed and skilled persons of PVTC, TEVTA, SANATZAR's of Social Welfare Department or other unemployed youth having good business plan.

Up till now, M/s Akhuwat has disbursed an amount of Rs. 1650.00 Million to 94,960 poor household in 33 vocations with average loan size of Rs. 17,382 in Punjab through its 142 offices in 30 districts of the Punjab.

To promote the traditional handicrafts in Punjab, PSIC has also launched dedicated credit assistance schemes for the craftsmen at subsidized markup rates. These craftsmen have also been provided marketing facilities through Pakistan Handicrafts Shops.

#### **4.17 SALIENT FEATURES OF THE SEZ BILL 2012**

The Law of SEZ has been made to meet the global challenges of competitiveness to attract FDI. The Law/bill will allow to create industrial clusters with liberal incentives, infrastructure, investor facilitation services to enhance productivity and reduce cost of doing business for economic development and poverty reduction. The Law further envisages to reduce processes through SEZ in Pakistan. The establishment of SEZs will attract both domestic as well as international investors. The SEZ would play a pivotal role in the economic development of Pakistan as has been witnessed in case of China, Malaysia, Thailand and other states.

It extends to the whole of Pakistan and overrides other laws (anything contrary);

- All SEZ whether Public, Public-Private or Private-Private to be governed under this Act;
- The Board of Approval (BOA) headed by the Prime Minister of Pakistan with the Minister for Finance as the Vice Chairman shall meet as frequently as required but not less than twice a year and decisions shall be taken by a majority of the total membership present and voting;
- SEZs will have exemption from customs duties & taxes for all Capital Goods imported into Pakistan for the development , operations and maintenance of a SEZ;
- Exemption from all taxes on income accruable in relation to the development and operations of the SEZ for a period of ten years, starting from the date of signing of the Development Agreement.
- Zone Enterprises have exemption from custom duties etc. on imports of Capital Goods;
- Exemption from taxes on income for a period of 10 years starting from the date the Development certifies that the Zone Enterprise has commenced commercial operations in the relevant SEZ;

There is no limit to the economic potential of Pakistan. The challenge is to create the enabling environment in which this can be realized. Special

Economic zones bill is a step towards the economic stability in the country.

#### **4.18 STRATEGIC TRADE POLICY FRAME WORK (2012-2015)**

The government unveiled on 29 January, 2013 a medium term (2012-2015) Strategic Trade Policy Framework, setting a cumulative export target of \$95 billion for three years. The framework, the second announced by the federal government will be implemented with a funding of Rs. 26.14 billion. In the first year, Rs.5 billion will be spent on providing subsidies and support to identified sectors.

The focus of the policy is on promoting regional trade and regulatory efficiency, promoting agro-processed exports, increasing exports from less developed regions, revamping export promotion agencies, increasing green exports, enhancing role of women in exports and pursuing product and market development and diversification.

The salient features of the policy include institutional interventions, export development initiatives and regulatory amendments. The policy, offers cash assistance to 14 sectors along with 19 regulatory frameworks, including ban on products as a protective measure against environmental and health hazards. The new

framework is designed to provide assistance only to the non-textile sectors.

***Institutional Measures:*** The government will setup institutions like an Export-Import (Exim) Bank, Pakistan Land Port Authority; Leather Export Promotion Council and a Services Trade Development Council.

***Export Development:*** Major initiatives in the Policy included allowing mark-up rate support of two per cent on prevailing LTFF for future import and purchase of machinery. An allocation of Rs.500 million has been proposed for schemes to be implemented this year. The total amount to be spent in three years is projected at Rs.3 billion. A mark-up support of 1.5% will be provided on export finance scheme (EFS) to selected sectors at a cost of Rs. 1.25 billion, including Rs. 200 million in 2012-2013.

The sectors for EFS support are fish and fish preparations, fruit and vegetables, spices, meat and meat preparations, carpets and rugs, sports goods, footwear, leather products, surgical goods, cutlery, onyx products, pharmaceuticals, electric fans, transport equipment, electrical machinery, specialized machinery, furniture, handicrafts and computer-related services.

An amount of Rs.14 billion will be given as adhoc relief at three per cent of FoB to offset the impact

of higher cost of utilities for exporters in selected sectors. The measure will cost Rs.3bn this year. An amount of Rs.2 billion-Rs125 million will be allocated for marketing development assistance for regional countries.

A Rs. 25 million allocation has been proposed for export promotion campaigns for agro-processed products; Rs. 400 million for encouraging opening of retail outlets; and Rs.400m for subsidizing 50% cost of plant and machinery for establishing processing plants for meat, fruits, vegetables, dates and olives in Azad Jammu and Kashmir, Baluchistan, Gilgit - Baltistan and Khyber Pakhtunkhwa.

An amount of Rs.30 million will be allocated for upgrading rice inspection laboratories, Rs. 20 million for subsidy at 100% of the prevailing mark-up rate for establishing mining and processing units in Khyber Pakhtunkhwa and Baluchistan.

Another Rs.20 million has been allocated for strengthening women's chamber of commerce and industry, Rs.32 million for setting up a resource management cell at the ministry of commerce, Rs.28 million for establishing leather export promotion council and Rs.70 million for services export development council.

### ***Regulatory Measures***

Unrestricted import of used motorized wheelchairs and five-year-old used or second-hand ambulances has been allowed. Two per cent of export proceeds will be allowed to manufacturers-cum-exporters for duty-free import of accessories for value-addition for leather garments and made-ups. Import of non-hazardous plastic scrap has been allowed for industrial consumers for use as raw material. A ban has been imposed on import of plastic waste, hospital waste, used sewerage pipes and chemical containers.

Import of non-sterilized surgical needles and syringes will be restricted to industrial units, condition of Euro-II may be made applicable on import of all types of specialized vehicles, such as crane-mounted lorries, dump trucks and mixtures lorries. The import of used sprinkle lorries will be restricted to a maximum of five year old. All goods from banned list imported in commercial quality shall be allowed to re-export at importer/shipping lines cost. The imported substandard goods from the restricted list should be destroyed within a period of six months without offering any release.

Import of waste and scrape of tyres in completely shredded/ cut form will only be allowed to industrial consumers; domestic standards will equally apply to imported goods as well.

Construction engineering and electrical companies will be allowed to retain abroad the exported

machinery to carry out work on export-cum-import basis with the condition that they will import the same on the conclusion of the contract against indemnity bond.

All exporters of edible products are to be registered and export of vegetable ghee and cooking oil will be allowed in packaging of up to 25kg to encourage value-addition.

### ***Steps to contain Environmental & Health Hazards***

- Ban on import of plastic waste/scrap-hospital waste, used sewerage pipes and chemical containers.
- Restricting import of non-sterilized surgical needles and syringes to industrial units.
- Only the more fuel efficient Euro-II category crane-mounted lorries, dump trucks, mixture lorries, etc, will be imported.
- Imported used tyres will only be allowed for industrial use.

### ***Institutions to be Setup***

- Export-Import Bank.
- Pakistan Land Port Authority.
- Leather Export Promotion Council.

- Service Trade Development Council.

## CHAPTER - V

### EXISTING PATTERN OF INDUSTRIAL DEVELOPMENT

#### 5.1 DESCRIPTION OF EXISTING INDUSTRIES

There are about 224 large, medium and some small industrial units in the district. Industry-wise installed capacity of major industrial units is given in Table-8.

**TABLE-8**

#### Industry-wise Installed Capacity

Sr. #	Industry	No. of units	Annual Installed Capacity
1	Agricultural Implements	28	2895 Nos.
2	Cold Storage	4	19000 Bags, 1000 Crates
3	Flour Mills	5	380 M.Tons /Day
4	Industrial Machinery	2	2200 Nos.
5	Jute Textile	1	25 M.Tons/ Day
6	Power Generation	1	11.23 MW
7	Rice Mills	133	137 Shellers
8	Sizing of Yarn	10	2105 Th. Kg
9	Textile Composite	1	6650 Spindles, 60 Looms, 576 Rotors

Source: District Officer (E&IP), Hafizabad.

**Note:** For further details visit: [www.doi.pitb.gov.pk](http://www.doi.pitb.gov.pk)



## CHAPTER - VI

### FUTURE INDUSTRIAL POTENTIAL

Keeping in view the availability of raw material, skilled labour, linkage between the industrial units, local / national / international demand, future industrial potential of district Hafizabad is discussed hereunder:

It would, however, be kept in mind that though the above mentioned factors facilitate the success of any industrial unit, yet the entire success depends upon the investors / entrepreneurs and the capabilities of the personnel having the managerial control because any of these factors, if lacking is manageable. Therefore, it is advisable that detailed feasibility of industrial projects must be carried out before making final decision for investment.

#### 6.1 AGRICULTURE

Main crops and fruits of district Hafizabad are wheat, rice, sugarcane, citrus and guava. Their average annual production over the period 2008-11 was 454.61, 261.83, 217.04, 1.69 and 4.72 thousand M. Tons respectively. A variety of vegetables are also grown in the district (Chapter-3, Section 3.1).

There are 5 flour mills and 133 rice husking units already operating in the district (Chapter-5).

In view of the availability of raw material and existing agro-based industries, there exists little scope for additional flour mills. However, there exists good prospects for rice bran oil, rice husk briquettes, fruit juice/squashes/pickles, vegetable dehydration.

## **6.2 LIVESTOCK**

As per Punjab Development Statistics 2011, the population of cattle, buffaloes, sheep and goat was 222, 581, 25 and 125 thousand heads respectively. As regards poultry, there are 184 broilers and 21 layer poultry farms having rearing capacity of 4,774 and 44 thousand birds respectively (Chapter-3, Section 3.3).

There exists good scope for milk processing, dairy products, dairy farms, poultry breeding farm, animal/poultry feed, cattle/goat/sheep fattening farms, leather products, leather garments, etc.

## **6.3 INDUSTRY**

There is no important industries operating in the district except small units i.e. agricultural implements, looms, washing soap, etc. (Chapter-5).

In view of the existing industries there exists good prospects for chip/hard board, electric wire/cables, capacitors/resisters, circuit breakers, plastic electrical accessories, etc.

#### **6.4 DEMAND BASED INDUSTRIES**

In view of the localized requirement and the existing industrial pattern of district Hafizabad, there exists a good prospect for biscuit, readymade garments, hosiery, woollen knitwear, etc.

#### **6.5 LIST OF IDENTIFIED PROJECTS**

In view of discussion given in section 6.1 to 6.4, the following industrial projects have been identified for investment in the district.

- Agriculture waste, by products raw material based industries for maximization of value addition chain
- Animal / Poultry Feed
- Biscuit
- Bakers Yeast
- Breeding Poultry Farm
- Chip/Hard Board
- Circuit Breakers
- Capacitors / Resisters
- Cattle / Goat / Sheep Fattening Farms
- Dairy Farms
- Dairy Products

- Electric Wires / Cables
- Energy conservation / Efficiency
- Fruit Juice / Squashes / Pickles
- Hosiery
- Leather Garments
- Leather Products
- Milk Processing
- Plastic Electrical Accessories
- Power generation through coal and other alternate fuels
- Power generation through bagasse
- Rice Bran Oil
- Rice Husk Briquettes
- Readymade Garments
- Vegetable Dehydration
- Waste heat recovery systems
- Woollen Knitwear

**Directory of Industrial Establishments, Hafizabad**

Sr. No.	Name / Address of unit	Phone No. / Website	Industry	Estb. Year	Investment (Th.Rs.)	Emp	Product	Annual Installed Capacity
1	Ahmed Agricultural Implements Gujranwala Road	524908	Agricultural Implements	1968	900	6	Agricultural Implements	25 Nos.
2	Arshad Agricultural Implements Gujranwala Road	524451	Agricultural Implements	1983	300	10	Agricultural Implements	40 Nos.
3	Aslam Agriculture, Gujranwala Road	525396	Agricultural Implements	2005	1500	18	Agricultural Implements	100 Nos.
4	Barkat Agricultural Gujranwala Road	520659	Agricultural Implements	1999	2150	16	Agricultural Implements	180 Nos.
5	Chishty Agricultural Gujranwala Road	523008	Agricultural Implements	2002	1700	15	Agricultural Implements	42 Nos.
6	Fazlia Agricultural Implements Al-Hadeed Market Gujranwala Road	521380	Agricultural Implements	1984	1200	10	Agricultural Implements	100 Nos.
7	Ghazi Wheat Thresher Gujranwala Road	522981	Agricultural Implements	1987	1125	16	Agricultural Implements	75 Nos.
8	Haji Abdul Ghani Agricultural Works Gujranwala Road	523181	Agricultural Implements	1975	900	10	Agricultural Implements	50 Nos.
9	Hanif Agricultural Industries Gujranwala Road	522573	Agricultural Implements	1980	2000	15	Agricultural Implements	150 Nos.

Sr. No.	Name / Address of unit	Phone No. / Website	Industry	Estb. Year	Investment (Th.Rs.)	Emp	Product	Annual Installed Capacity
10	Imran Agricultural Gujranwala Road	523094	Agricultural Implements	2000	700	5	Agricultural Implements	80 Nos.
11	Imran Agriculture Gujranwala Road	523094	Agricultural Implements	2001	1300	5	Agricultural Implements	65 Nos
12	Insaf Agricultural Gujranwala Road	525665	Agricultural Implements	2001	600	5	Agricultural Implements	55 Nos
13	International Agricultural Implement Al-Hadeed Market Gujranwala Road	521809	Agricultural Implements	1982	1500	C	Agricultural Implements	300 Nos.
14	International Combined Harvester, Gujranwala Road		Agricultural Implements	2002	1500	18	Agricultural Implements	136 Nos
15	Kalani Agricultural Implements Gujranwala Road	521039, 524181	Agricultural Implements	1990	2050	16	Agricultural Implements	100 Nos.
16	Nawaz Wheat Thresher Gujranwala Road	525663	Agricultural Implements	1980	1550	16	Agricultural Implements	185 Nos.
17	New Ahmad Agriculture Gujranwala Road	523479	Agricultural Implements	2001	1250	5	Agricultural Implements	125 Nos
18	New International Agricultural Industry Gujranwala Rd	522507	Agricultural Implements	1985	1000	10	Agricultural Implements	250 Nos.
19	New Saddiq Industries Gujranwala Rd	524878	Agricultural Implements	1985	1300	7	Agricultural Implements	40 Nos.

Sr. No.	Name / Address of unit	Phone No. / Website	Industry	Estb. Year	Investment (Th.Rs.)	Emp	Product	Annual Installed Capacity
20	Noor Agricultural Guranwala Road	525289	Agricultural Implements	2001	500	15	Agricultural Implements	50 Nos
21	Noor Agricultural Implements Gujranwala Road	525289	Agricultural Implements	1984	1650	15	Agricultural Implements	125 Nos
22	Noor Farm Machinery Gujranwala Road	522309	Agricultural Implements	1992	1500	10	Agricultural Implements	60 Nos.
23	Noor International Farm Gujranwala Road	523363	Agricultural Implements	1976	2100	18	Agricultural Implements	150 Nos.
24	Noor Iqbal Agricultural Gujranwala Road	521809	Agricultural Implements	1999	1200	5	Agricultural Implements	67 Nos
25	Riaz Wheat Thresher Gujranwala Road	524902	Agricultural Implements	1986	1800	20	Agricultural Implements	170 Nos.
26	Shaheen Agricultural Industries Gujranwala Road	524326	Agricultural Implements	2000	2200	16	Agricultural Implements	125 Nos
27	Shakeel Engeeneering Works Al-Hadeed Market Gujranwala Road		Agricultural Implements	1987	1150	10	Agricultural Implements	85 Nos.
28	Tufail Engg: Works Gujranwala Road	523199	Agricultural Implements	1967	450	6	Agricultural Implements	100 Nos.
29	Sarfraz Spare Works, Vanike Road		Auto Parts	2006	300	5	Auto Parts	2000 Nos.

Sr. No.	Name / Address of unit	Phone No. / Website	Industry	Estb. Year	Investment (Th.Rs.)	Emp	Product	Annual Installed Capacity
30	Bashir Precast Factory, Peelo Road		Cement Products	2007	700	10	Building Material	5000 Sq.Ft.
31	Aman Cold Storage Madarianwala Chowk By Pass	520116	Cold Storage	1997	4500	10	Vegetable/ Fruits	8000 Bags
32	Arshad Cold Storage, Ghalla Mandi		Cold Storage	2005	2000	4	Vegetable/ Fruits	1000 Bags
33	Riaz Cold Storage Ali Pur Road	520428	Cold Storage	2000	2500	6	Vegetable/ Fruits	1000 Crates
34	Yousaf Cold Storage Mandrianwala Road	525002	Cold Storage	1984	4000	10	Vegetable/ Fruits	10000 Bags
35	Ihsan Sons, Lahore Road, Pindi Bhattian		Doubling Of Yam	2004	1000	10	Doubling Of Yam	600 Spindles
36	Latif & Sons, Lahore Road, Pindi Bhattian		Doubling Of Yam	2004	1500	18	Doubling Of Yam	800 Spindles
37	Asad Embroidery, Lari Adda	540309	Embroidery	2008	3000	20	Embroidered Cloth	4 Machines
38	Bohla Embroidery, Jalalpur Road		Embroidery	2009	9000	20	Embroidered Cloth	5 Machines
39	Ghulam Mustafa Embroidery Works, Kolo Tarar Road		Embroidery	2008	1800	10	Embroidered Cloth	3 Machines
40	Haji Ifikhar Ahmed Embroidery, Lari Adda		Embroidery	2009	3000	16	Embroidered Cloth	4 Machines
41	Ishfaq Ahmed Readymade Garments Works, Ali Chowk		Embroidery	2005	3000	20	Embroidered Cloth	6 Machines

Sr. No.	Name / Address of unit	Phone No. / Website	Industry	Estb. Year	Investment (Th.Rs.)	Emp	Product	Annual Installed Capacity
42	Muhammad Sharif S/O Muhammad Abdullah, Kolo Tarar Road		Embroidery	2007	1500	15	Embroidered Cloth	3 Machines
43	Talib Embroidery Works, Sharifpura	412145	Embroidery	2006	1400	20	Embroidered Cloth	3 Machines
44	Yousaf Embroidery Works, Sharifpura	525760	Embroidery	2007	3500	20	Embroidered Cloth	3 Machines
45	Azam Flour Mills, P/B Road		Flour Mills	2009	9000	12	Flour	240 M.Tons /Day
46	Mushtaq Flour Mills Jalal Pur Road	521458	Flour Mills	1990	10000	11	Flour	140 M.Tons /Day
47	National Flour Mills Gujranwal Road	520448	Flour Mills	1997	7000	5	Flour	80 M.Tons /Day
48	Qadri Flour Mills Bye Pass Shah Jamal Road	524873, 522805 www.qfmill.com	Flour Mills	1996	9000	12	Flour	80 M.Tons /Day
49	Sagar Flour Mills, Sagar Kalan	0321-7468255	Flour Mills	2005	9000	10	Flour	240 M.Tons /Day
50	Abid Agricultural Gujranwala Rd	520778	Industrial Machinery	1998	5000	19	Rice Mills Machinery	200 Nos.
51	International Spare Parts Combine Machine, Gujranwala Rd		Industrial Machinery	2005	2500	18	Spare Parts Of Harvester	2000 Nos.
52	White Peral Jute Mills, Solgin Khari		Jute Textile	2002	12000	35	Jute Product	25 M.Tons/Day
53	Muhammad Ashraf Saif Works, Gujranwala Rd		Light Engineering	2008	1200	6	Saif Steel Almirah	15000 Nos.

Sr. No.	Name / Address of unit	Phone No. / Website	Industry	Estb. Year	Investment (Th.Rs.)	Emp	Product	Annual Installed Capacity
54	Bismillah Dudial Marble Factory, Pindi Bhattian Road, Jalalpur Bhattian		Marble Industry	2007	400	10	Marble Products	300 M.Tons
55	Unique Marble, Pindi Bhattian Road		Marble Industry	2002	800	10	Marble Products	300 M.Tons
56	Younas Marble, Vanike Road		Marble Industry	2002	1000	4	Marble Products	350 M.Tons
57	Ashraf Plastic Works, Gujranwala Road		Plastic Products	2006	250	6	Plastic Products	2 M.Tons
58	Izhar Ahmed Plstic Works, Chack Chatha		Plastic Products	2007	400	10	Plastic Products	6 M.Tons
59	Meher Plastic Works, Head Sagar		Plastic Products	2007	300	4	Plastic Products	3 M.Tons
60	Crescent Bahuman Energy Ltd. Pindi Bhattian	531021-7, www.crescentbahuman.com	Power Generation	1994	110000	55	Electricity	11.23 Mw
61	Abbas Rice Mills Kassoki Road	525766	Rice Mills	1997	1800	10	Rice	1 Sheller
62	Abu-Bakar Rice Mills, Manghat Road, Jalalpur Bhattian		Rice Mills	2001	2000	10	Rice	1 Sheller
63	Abu-Bakar Rice Mills Jalalpur Bhatti	500379	Rice Mills	2000	10000	19	Rice	1 Sheller
64	Ahmad Nawaz Rice Mills, Kalake Mandi		Rice Mills	2007	4400	5	Rice	1 Sheller
65	Ahmad Rice Mills, Rasoolpur Tarar		Rice Mills	2005	5000	15	Rice	1 Sheller

Sr. No.	Name / Address of unit	Phone No. / Website	Industry	Estb. Year	Investment (Th.Rs.)	Emp	Product	Annual Installed Capacity
66	Ahmed Bakhsh Rice Mills, Rasoolpur Tarar		Rice Mills	2005	5000	4	Rice	1 Sheller
67	Akbar Samoor Rice Mills Chowk Talapur Road Bypass	520300	Rice Mills	1980	7000	13	Rice	1 Sheller
68	Al-Hassnan Rice Mills Pindi Bhattian Road	0300-4463814	Rice Mills	2004	8500	12	Rice	1 Sheller
69	Ali Rice Mills Pindi Bhattian Road 6 K.M. Hafizabad		Rice Mills	2001	6000	13	Rice	1 Sheller
70	Ali Rice Mills Pindi Bhattian Road Jalal Pur Bhattian		Rice Mills	1999	8500	14	Rice	1 Sheller
71	Ali Rice Mills, Kalaki Mandi		Rice Mills	2006	4500	10	Rice	1 Sheller
72	Al-Jamil Rice Sheller Jalalpur Road	523503	Rice Mills	1980	6300	12	Rice	1 Sheller
73	Al-Manzoor Rice Mills, Rasoolpur Rarar		Rice Mills	2005	4500	14	Rice	1 Sheller
74	Al-Mustafa Rice Mills Veddoke Hafizabad Sukheki Road		Rice Mills	2004	7000	5	Rice	1 Sheller
75	Al-Noor Rice Mills Wanike Road Jalalpur Bhattian		Rice Mills	1989	6000	10	Rice	1 Sheller
76	Al-Noor Rice Mills, Manghat Road, Jalalpur Bhattian		Rice Mills	2001	1800	10	Rice	1 Sheller

Sr. No.	Name / Address of unit	Phone No. / Website	Industry	Estb. Year	Investment (Th.Rs.)	Emp	Product	Annual Installed Capacity
77	Al-Rehman Rice Mill Jalalpur Bhattian	401244-5	Rice Mills	2004	8000	10	Rice	1 Sheller
78	Al-Sheikh Rice Mills, Manghat Road, Jalalpur Bhattian		Rice Mills	2001	2000	20	Rice	1 Sheller
79	Arshad Rice Mills Khanpur Adda Jalalpur Bhattian		Rice Mills	2004	8500	15	Rice	1 Sheller
80	Awan Rice Mills Kassoki Road		Rice Mills	1994	2000	6	Rice	1 Sheller
81	Azeem Ullah Rice Sheller, Tehsil Pindi Bhattian		Rice Mills	2007	3500	7	Rice	1 Sheller
82	Basharat Rice Sheller Jugawala Road	520967	Rice Mills	1974	5500	10	Rice	1 Sheller
83	Bhatti Rice Mills Jalalpur Road	500926	Rice Mills	1997	2000	12	Rice	1 Sheller
84	Bhatti Rice Mills Sukhaki Mandi	530259	Rice Mills	1981	5500	10	Rice	1 Sheller
85	Bhatti Rice Mills, Hafizabad Road, Jalalpur Bhattian		Rice Mills	2001	2000	10	Rice	1 Sheller
86	Bhoon Rice Sheller Gujranwal Road	524115	Rice Mills	1997	3500	6	Rice	1 Sheller
87	Bilal Rice Sheller By Pass Road	523446	Rice Mills	1978	7500	12	Rice	1 Sheller
88	Bismiliah Rice Mills Jalalpur Bhattian	555181	Rice Mills	2004	8000	13	Rice	1 Sheller

Sr. No.	Name / Address of unit	Phone No. / Website	Industry	Estb. Year	Investment (Th.Rs.)	Emp	Product	Annual Installed Capacity
89	Blue Peral Rice Mills Jalalpur Bhattian	558083	Rice Mills	2003	8500	15	Rice	1 Sheller
90	Ch. Rice Mills, Pindi Bhattian Road, Jalalpur Bhattian		Rice Mills	2001	1600	10	Rice	1 Sheller
91	Chanab Rice Mills Chinoit Road Pindi Bhattian	532211	Rice Mills	1976	4500	10	Rice	1 Sheller
92	Cheema Rice Mills, Nali Mohal, Pindi Bhattian		Rice Mills	2007	4400	4	Rice	1 Sheller
93	Chenab Rice Mills Jalalpur Road Solongi Awan		Rice Mills	1998	5500	10	Rice	1 Sheller
94	Chenab Rice Mills Sargodha Road Sukhake Mandi		Rice Mills	1980	1600	5	Rice	1 Sheller
95	Chinab Rice Mills Pindi Bhattian Road Jilalpur Bhattian	531211	Rice Mills	1980	2500	15	Rice	2 Sheller
96	Chinab Rice Mills Wanike Tarar Hafizabad	537038	Rice Mills	1998	4500	7	Rice	1 Sheller
97	Chudhary Rice Mills, Jalalpur P/Bhattian		Rice Mills	1995	8300	12	Rice	1 Sheller
98	Crystal Rice Mills, Jalalpur Bhattian, 4-Kim Pindi Bhattian		Rice Mills	2001	2500	15	Rice	1 Sheller
99	Data Hajvery Rice Mills Sukhake Mandi		Rice Mills	2001	2000	15	Rice	1 Sheller

Sr. No.	Name / Address of unit	Phone No. / Website	Industry	Estb. Year	Investment (Th.Rs.)	Emp	Product	Annual Installed Capacity
100	Dudahal Rice Mills Pindi Bhattian Road Jalalpur Bhattian	0321-7479369	Rice Mills	1998	7500	15	Rice	1 Sheller
101	Farooqi Rice Mills 9 K.M.Jafizabad Jalalpur Bhattian Road Village Islam Pura		Rice Mills	1997	3200	C	Rice	1 Sheller
102	Farooqi Rice Mills Jalalpur Bhattian		Rice Mills	1996	2000	C	Rice	1 Sheller
103	Farrukh Sittar & Company Jalal Pur Bhattian	500187	Rice Mills	1997	27750	15	Rice	1 Sheller
104	Faza Karim & Sons Alipur Road	520669	Rice Mills	1905	10000	24	Rice	1 Sheller
105	Fazal Hussien Rice Sheller Kassoake Road	525766	Rice Mills	1979	3200	5	Rice	1 Sheller
106	Fazal Rice Mills Katchery Road P/Bhattian		Rice Mills	2000	2000	11	Rice	1 Sheller
107	Haider Rice Mills, Village Peelo		Rice Mills	2007	4400	6	Rice	1 Sheller
108	Haji Basher Nazir Rice Mills Vanike Road By Pass	523120, 522451	Rice Mills	1998	2400	14	Rice	1 Sheller
109	Haji Khan Muhammad Rice Mills Alipur Chattha Road Vanike		Rice Mills	2001	2800	10	Rice	1 Sheller
110	Hajveri Rice Mills Lahore Road Sukheki	530804	Rice Mills	2001	9500	15	Rice	1 Sheller

Sr. No.	Name / Address of unit	Phone No. / Website	Industry	Estb. Year	Investment (Th.Rs.)	Emp	Product	Annual Installed Capacity
111	Hassan Corporation, Jalalpur Bhattian	500140, 500740	Rice Mills	2002	9000	35	Rice	4 Sheller
112	Hassanin Rice Mills Lalkay		Rice Mills	1998	5000	7	Rice	1 Sheller
113	Iftikhar Tarar Mills Rasoolpur Tarar		Rice Mills	2003	4500	16	Rice	1 Sheller
114	Imman Ali Rice Mills, Pindi Bhattian Road, Jalalpur Bhattian		Rice Mills	2001	1400	12	Rice	1 Sheller
115	Imran Ali Rice Mills P/Bhattian Road		Rice Mills	1999	2000	10	Rice	1 Sheller
116	Imran Sadique Rice Mills Gujranwala Road		Rice Mills	1999	6000	C	Rice	1 Sheller
117	Iqbal Rice Mills Sargodha Road Sukhake Mandi	554226	Rice Mills	1996	1800	15	Rice	1 Sheller
118	Ittfaaq Rice Mills, Village Kalo Tarar	554226	Rice Mills	1980	6500	8	Rice	1 Sheller
119	Ittfaaq Rice Mills Sakhaki Mandi		Rice Mills	1970	5000	10	Rice	1 Sheller
120	Ittehad Rice Mill Jalalpur Bhattian	500995	Rice Mills	2000	8500	26	Rice	1 Sheller
121	Ittfaaq Rice Mill Kalaki Mandi		Rice Mills	1977	4500	10	Rice	1 Sheller
122	Jurra Rice Mill By Pass Road		Rice Mills	1996	5500	C	Rice	1 Sheller
123	Kashif Rice Mills Sukake Mandi Pindi Bhattian Road	5301569	Rice Mills	1996	5500	10	Rice	1 Sheller

Sr. No.	Name / Address of unit	Phone No. / Website	Industry	Estb. Year	Investment (Th.Rs.)	Emp	Product	Annual Installed Capacity
124	Kernal Rice Mills Kot Mubrik	524066	Rice Mills	2000	2500	13	Rice	1 Sheller
125	Khakhar Rice Mill Gujaranwala Road		Rice Mills	1977	4800	6	Rice	1 Sheller
126	Khalid Rice Mills Gujranwala Road		Rice Mills	1985	2000	6	Rice	1 Sheller
127	Khan Rice Mills, Pindi Bhattian Road, Jalalpur Bhattian		Rice Mills	2007	4500	12	Rice	1 Sheller
128	Khan Rice Sheller Mandrianwala Road	560161	Rice Mills	1995	7000	10	Rice	1 Sheller
129	Kharal Rice Mills Kaseray Willage	400922	Rice Mills	2000	9500	13	Rice	1 Sheller
130	Khokhar Rice Mills Gujranwala Rd	525655	Rice Mills	1988	2000	6	Rice	1 Sheller
131	Khuda Buksh Tarar Rice Mills Rasoolpur Tarar	555156	Rice Mills	2003	5000	10	Rice	1 Sheller
132	Khurshid Rice Mills, Jalalpur Bhattian	500186	Rice Mills	2005	5700	5	Rice	1 Sheller
133	Lasani Rice Mills Jilalpur Rd	520300 524136	Rice Mills	1985	2000	6	Rice	1 Sheller
134	M. Zubair Enterprises Jalalpur Bhattian	500100	Rice Mills	1994	16500	29	Rice	1 Sheller
135	Madina Rice Mills P/Bhattian Road, Jalalpur	500171	Rice Mills	1999	8400	18	Rice	1 Sheller

Sr. No.	Name / Address of unit	Phone No. / Website	Industry	Estb. Year	Investment (Th.Rs.)	Emp	Product	Annual Installed Capacity
136	Madni Rice Mills Jalalpur Bhattian	500880	Rice Mills	2001	9500	19	Rice	1 Sheller
137	Makkah Rice Mills P/Bhattian Road Jalalpur Bhattian		Rice Mills	2004	7500	15	Rice	1 Sheller
138	Makran Rice Mills Gujranwala Road	524120	Rice Mills	1985	2000	10	Rice	1 Sheller
139	Malik Khalid Rice Mill Gujranwala Road	521616	Rice Mills	1978	1600	5	Rice	1 Sheller
140	Malik Tariq Rice Mills Choki Sukheki Mandi	530084	Rice Mills	2001	5000	14	Rice	1 Sheller
141	Manzoor Rice Mills, Vanike Road		Rice Mills	2005	4500	5	Rice	1 Sheller
142	Map Rice Mills (Pvt) Ltd., Gujranwala Road Chak Chacchah	521706	Rice Mills	2004	100000	68	Rice	1 Sheller
143	Mazco Industries (Pvt) Ltd., Hafizabad Road Jalalpur Bhattian	500215, 500415	Rice Mills	2000	50488	20	Rice	1 Sheller
144	Merit Rice Mills Lahore Sargodha Road Sukhake Mandi		Rice Mills	1985	1400	10	Rice	1 Sheller
145	Mian Bashir Rice Mills Kassoki Road		Rice Mills	1985	2000	10	Rice	1 Sheller
146	Mian Manzoor Rice Mills Vanike Tarar	537109	Rice Mills	1998	5500	10	Rice	1 Sheller

Sr. No.	Name / Address of unit	Phone No. / Website	Industry	Estb. Year	Investment (Th.Rs.)	Emp	Product	Annual Installed Capacity
147	Mian Rice Mills Wani Ke Tarar	537204	Rice Mills	2003	5000	6	Rice	1 Sheller
148	Modern Rice Mills Jalalpur Bhattian	400749	Rice Mills	1996	7800	16	Rice	1 Sheller
149	Muhammad Shafi Rice Mills Alipur Road Near Nala Same		Rice Mills	1996	2000	12	Rice	1 Sheller
150	Muhammadi Rice Mills Jalalpur Bhattian	500736	Rice Mills	1999	2500	15	Rice	1 Sheller
151	Muhammadi Rice Mills Jalalpur Bhattian		Rice Mills	1999	8500	12	Rice	1 Sheller
152	Murad Rice Mills Wanike Tarar		Rice Mills	1982	5500	6	Rice	1 Sheller
153	Nafees Rice Mills P/Bhattian Road Jalalpur Bhattian	500488, 500288	Rice Mills	2000	8500	16	Rice	1 Sheller
154	National Rice Mills, Tahli Goruya, Jalalpur Bhattian		Rice Mills	2001	2000	10	Rice	1 Sheller
155	Nawaz Rice Mills, Marrah Bashi		Rice Mills	2006	4500	10	Rice	1 Sheller
156	Nazir Ahmed Rice Mills, Village Manghat		Rice Mills	2007	3800	8	Rice	1 Sheller
157	New Chenab Rice Mill New Mandi Sukhaki	530236	Rice Mills	1980	9500	10	Rice	1 Sheller
158	Noon Rice Mills Vanike Road	525074	Rice Mills	1977	4000	10	Rice	1 Sheller

Sr. No.	Name / Address of unit	Phone No. / Website	Industry	Estb. Year	Investment (Th.Rs.)	Emp	Product	Annual Installed Capacity
159	Pak Rice Mills Ali Pur Road, Vanike Tarar	537109	Rice Mills	2000	4000	11	Rice	1 Sheller
160	Pakistan Rice Mills Katchery Road P/Bhattian	531055	Rice Mills	1998	6000	7	Rice	1 Sheller
161	Punjab Peral Rice Mills, Sukhaki Road, Jalalpur Bhattian	500597	Rice Mills	2000	9500	10	Rice	1 Sheller
162	Qadaria Rice Mills Kalake Mandi	538211	Rice Mills	1999	8000	12	Rice	1 Sheller
163	Qadir Bakhsh Bhatti Rice Mills, Jalalpur Bhattian		Rice Mills	2005	6000	5	Rice	1 Sheller
164	Rab Nawaz & Sons, Rasoolpur Tarar		Rice Mills	2006	4500	10	Rice	1 Sheller
165	Rai Mujahid Abas Rice Mills, Kalaki Mandi		Rice Mills	2007	4000	4	Rice	1 Sheller
166	Rajput Rice Mills Kassoke Road	557200	Rice Mills	1998	2500	13	Rice	1 Sheller
167	Ramzan Rice Mills, Thatha Chahra		Rice Mills	2007	3800	10	Rice	1 Sheller
168	Raouf Rice Mills Jalalpur Bhattian Road Village Kolo Tarar		Rice Mills	1998	2800	C	Rice	1 Sheller
169	Rashid Rice Mills Alipur Chatha Road Veneketrar		Rice Mills	1998	1600	5	Rice	1 Sheller
170	Rattu Rice Mill Gujranwala Road	524720	Rice Mills	1967	4600	5	Rice	1 Sheller

Sr. No.	Name / Address of unit	Phone No. / Website	Industry	Estb. Year	Investment (Th.Rs.)	Emp	Product	Annual Installed Capacity
171	Resham Rice Mills, Rasoolpur Tarar		Rice Mills	2005	4000	5	Rice	1 Sheller
172	Sadique Rice Mills Kalake Mandi		Rice Mills	1999	1900	5	Rice	1 Sheller
173	Saleem Rice Mills, Jalalpur Bhattian		Rice Mills	2005	5000	10	Rice	1 Sheller
174	Sandal Rice Mills, Lahore Road, Pindi Bhattian		Rice Mills	2006	7000	10	Rice	1 Sheller
175	Sayyed Rice Mill Pindi Bhattian Road Sukheki		Rice Mills	2000	5500	10	Rice	1 Sheller
176	Sbhan Rice Mills		Rice Mills	2005	4800	5	Rice	1 Sheller
177	Shabbir Rice Factory Kasesa Road Jalalpur Road Bhattian		Rice Mills	2004	7000	10	Rice	1 Sheller
178	Shafique Supreme Rice Mills, Pindi Bhattian	531091	Rice Mills	2005	8000	20	Rice	1 Sheller
179	Shahbaz Rice Mills, Kaleki Mandi		Rice Mills	2005	3500	14	Rice	1 Sheller
180	Shaheen Rice Mills Lahore Sargodha Road Sukhake Mandi		Rice Mills	1992	1400	5	Rice	1 Sheller
181	Sherazi Rice Mills, Raghoo Sydian		Rice Mills	2005	5000	10	Rice	1 Sheller
182	Sohawa Rice Mills Pindi Bhattian Road Sukhaki	530522	Rice Mills	1990	6500	10	Rice	1 Sheller

Sr. No.	Name / Address of unit	Phone No. / Website	Industry	Estb. Year	Investment (Th.Rs.)	Emp	Product	Annual Installed Capacity
183	Sultania Rice Mills Kalake Mandi	538358	Rice Mills	1997	5500	10	Rice	1 Sheller
184	Super Pearl Rice Vanike Road	522451	Rice Mills	1999	6000	14	Rice	1 Sheller
185	Syed Iftikhar Rice Mills, Lolyanwala		Rice Mills	2005	4000	4	Rice	1 Sheller
186	Syed Rice Mills Pindi Bhattian		Rice Mills	1997	2500	5	Rice	1 Sheller
187	Tarar Rice Mills Sheller Vanike Road		Rice Mills	1967	5500	10	Rice	1 Sheller
188	Tayyab Rice Sheller Jugawala Rd		Rice Mills	1979	6000	11	Rice	1 Sheller
189	Umer Tarar Rice Mills Kolo Tarar Village	554290	Rice Mills	1985	3500	7	Rice	1 Sheller
190	United Rice Mills, Bari Wala		Rice Mills	2006	6000	6	Rice	1 Sheller
191	Usman Rice Mills, Hafizabad Road Vanike Tarar	537333	Rice Mills	1980	5500	13	Rice	1 Sheller
192	White Pearl Rice Mills (Pvt) Ltd. Village Solgin Kharl, Hafizabad Road Jalalpur Bhattian	521216	Rice Mills	1994	500	23	Rice	1 Sheller
193	White Petal Rice Mills Pindi Bhattian Road	555157	Rice Mills	2000	7500	14	Rice	1 Sheller
194	Allah Tawakal Sizing, Juggawala Rd, Ali Town	526437	Sizing Of Yam	2003	1500	10	Sizing Of Yam	25 Th. Kg

Sr. No.	Name / Address of unit	Phone No. / Website	Industry	Estb. Year	Investment (Th.Rs.)	Emp	Product	Annual Installed Capacity
195	Asif Sizing Industries Jalalpur Road	520742	Sizing Of Yam	1980	2300	11	Sizing Of Yam	255 Th. Kg
196	Bhutta Sizing Industries Alipur Road	522789	Sizing Of Yam	1993	1600	C	Sizing Of Yam	255 Th. Kg
197	Bismillah Sizing Kolo Road	522492	Sizing Of Yam	1998	1800	10	Sizing Of Yam	255 Th. Kg
198	Five Star Sizing Kolo Road	524631	Sizing Of Yam	1990	1500	10	Sizing Of Yam	255 Th. Kg
199	Ittefaq Sizing Industries Kolo Road	522618	Sizing Of Yam	1995	1700	C	Sizing Of Yam	255 Th. Kg
200	Makka Sizing Industries Jalalpur Road	522634	Sizing Of Yam	1991	1950	10	Sizing Of Yam	255 Th. Kg
201	New Kashmir Sizing Industries Alipur Road	522789	Sizing Of Yam	1989	1650	C	Sizing Of Yam	270 Th. Kg
202	Rehmania Sizing Works, Ali Town	0321-7284765	Sizing Of Yam	2006	4000	10	Sizing Of Yam	25 Th. Kg
203	Sarajia Industries Vanike Road	524455, 0300-6521255	Sizing Of Yam	2000	1650	10	Sizing Of Yam	255 Th. Kg
204	Crescent Bahuman Ltd., Lahore Sargodha Road Pindi Bhattian	531021, www.crescentbahuman.com	Textile Composite	1994	1370493	4623	Cotton Yam, Fabric, Readymade Garments	6650 Spindles, 60 Looms, 576 Rotors
205	Afzal Weaving Factory, Ali Town		Textile Weaving	2008	700	3	Grey Cloth	8 Looms
206	Amin Textile Factory, Kolo Road		Textile Weaving	2007	900	10	Grey Cloth	18 Looms
207	Bashir Weaving Factory, Ali Town		Textile Weaving	2008	800	4	Grey Cloth	8 Looms

Sr. No.	Name / Address of unit	Phone No. / Website	Industry	Estb. Year	Investment (Th.Rs.)	Emp	Product	Annual Installed Capacity
208	Bashir Weaving Factory, Ali Town		Textile Weaving	2008	100	7	Grey Cloth	12 Looms
209	Ghazanfar Weaving Factory, Ali Town		Textile Weaving	2008	100	5	Grey Cloth	8 Looms
210	Ghulam Mustafa Weaving Factory, Ali Town		Textile Weaving	2008	500	4	Grey Cloth	6 Looms
211	Inayat Industry, Hassan Twon		Textile Weaving	2008	1000	4	Grey Cloth	8 Looms
212	Muhammad Ishaq Weaving Industries, Ali Town		Textile Weaving	2008	500	4	Grey Cloth	6 Looms
213	Muhammad Ishaq Weaving Industries, Ali Town		Textile Weaving	2008	500	4	Grey Cloth	8 Looms
214	Ramzan Weaving Factory, Ali Town		Textile Weaving	2008	800	4	Grey Cloth	8 Looms
215	Safdar Weaving Factory, Ali Town		Textile Weaving	2008	1200	8	Grey Cloth	8 Looms
216	Salamatay Weaving Factory, Ali Town		Textile Weaving	2008	800	4	Grey Cloth	8 Looms
217	Shabbir Weaving Factory, Ali Town		Textile Weaving	2008	700	3	Grey Cloth	8 Looms
218	Allah Ditta Furniture Works, Kolo Road		Wooden Products	2006	800	15	Furniture	40 Set

Sr. No.	Name / Address of unit	Phone No. / Website	Industry	Estb. Year	Investment (Th.Rs.)	Emp	Product	Annual Installed Capacity
219	Hafiz Rasheed Furniture Works, Near Bilal Chowk		Wooden Products	2004	700	13	Furniture	35 Set
220	Saw Milling (Furniture), Pindi Bhattian		Wooden Products	2008	300	2	Furniture	25 Set
221	Shabbir Ahmed Furniture, Gujranwala Road		Wooden Products	2006	300	3	Furniture	30 Set
222	Sharif Furniture, Gujranwala Road		Wooden Products	2005	600	3	Furniture	25 Set
223	Waris Furniture Works, Alipur Road		Wooden Products	2004	700	14	Furniture	40 Set
224	Yousaf Furniture Works, Sarkari Parais		Wooden Products	2004	800	15	Furniture	40 Set

Source: Directorate of Industries, Punjab

## LIST OF CONTACT NUMBERS

### *Directorate of Industries Punjab*

Director Industries, Punjab	Tel: +92 (42)-99211520-1 Fax: +92 (42)-99211522 dipunjab@gmail.com
Additional Director Industries	Tel: +92 (42)-99211531 +92 (42)-99212752 Fax: +92 (42)-99212753
Joint Director (Development)	Tel: +92 (42)-99211526
Senior Economist	Tel: +92 (42)-99211533
Staff Economist	Tel: +92 (42)-99211534
Deputy Director (Admin)	Tel: +92 (42)-99211528
Deputy Director (Development)	Tel: +92 (42)-99211528
Deputy Director (Planning)	Tel: +92 (42)-99211530
Assistant Director (Admin)	Tel: +92 (42)-99211529
Assistant Director (Planning)	Tel: +92 (42)-99211530
Assistant Director (Statistics)	Tel: +92 (42)-99211524
Assistant Registrar	Tel: +92 (42)-99211523
Librarian	Tel: +92 (42)-99213010
District Officer (E&IP), Hafizabaed	Tel: +92 (547)-523930

### *Other Relevant Departments*

Department	Contact
Secretary, Industries, Commerce & Investment Department, Govt. of the Punjab	Tel: +92 (42) 99210534-5 Fax: +92 (42) 99210536
Punjab Board of Investment & Trade (PBIT)	Tel: +92 (42) 99205201 info@pbit.gov.pk
Small & Medium Enterprises Development Authority (SMEDA)	Tel: +92(42)-111-111-456 Fax: +92 (42) 36304926-7 info@smeda.org.pk
Punjab Industrial Estates Development and Management Company (PIEDMC)	Tel: +92 (42) 35297203-6 Fax: +92 (42) 35297207 info@pie.com.pk
Punjab Small Industries Corporation (PSIC)	Tel: +92 (42) 99200453



## BIBLIOGRAPHY

- Punjab Development Statistics 2011, Bureau of Statistics, Government of the Punjab
- The Urban Unit, Planning & Development Department, Government of the Punjab.
- Technical Education and Vocational Training Authority
- Chief Inspector of Boilers, Directorate of Industries, Punjab
- Directorate of Agriculture, Crop Reporting Service, Punjab
- Chief Conservator of Forest Planning, Monitoring and Evaluation, Punjab
- Directorate General (Ext), Livestock & Dairy Development Punjab
- Directorate General Mines & Minerals, Punjab
- Punjab Small Industries Corporation
- Punjab Industrial Estates Development and Management Company
- Faisalabad Industrial Estates Development and Management Company
- Industries, Commerce & Investment Department, Government of the Punjab
- District Officers (Enterprise & Investment Promotion) as well as District Administration
- Export Processing Zones Authority
- Board of Investment, Government of Pakistan
- Website of Stat Bank of Pakistan
- Ministry of Commerce, Govt. of Pakistan
- Directory of Industrial Establishments Punjab, Directorate of Industries, Punjab

