

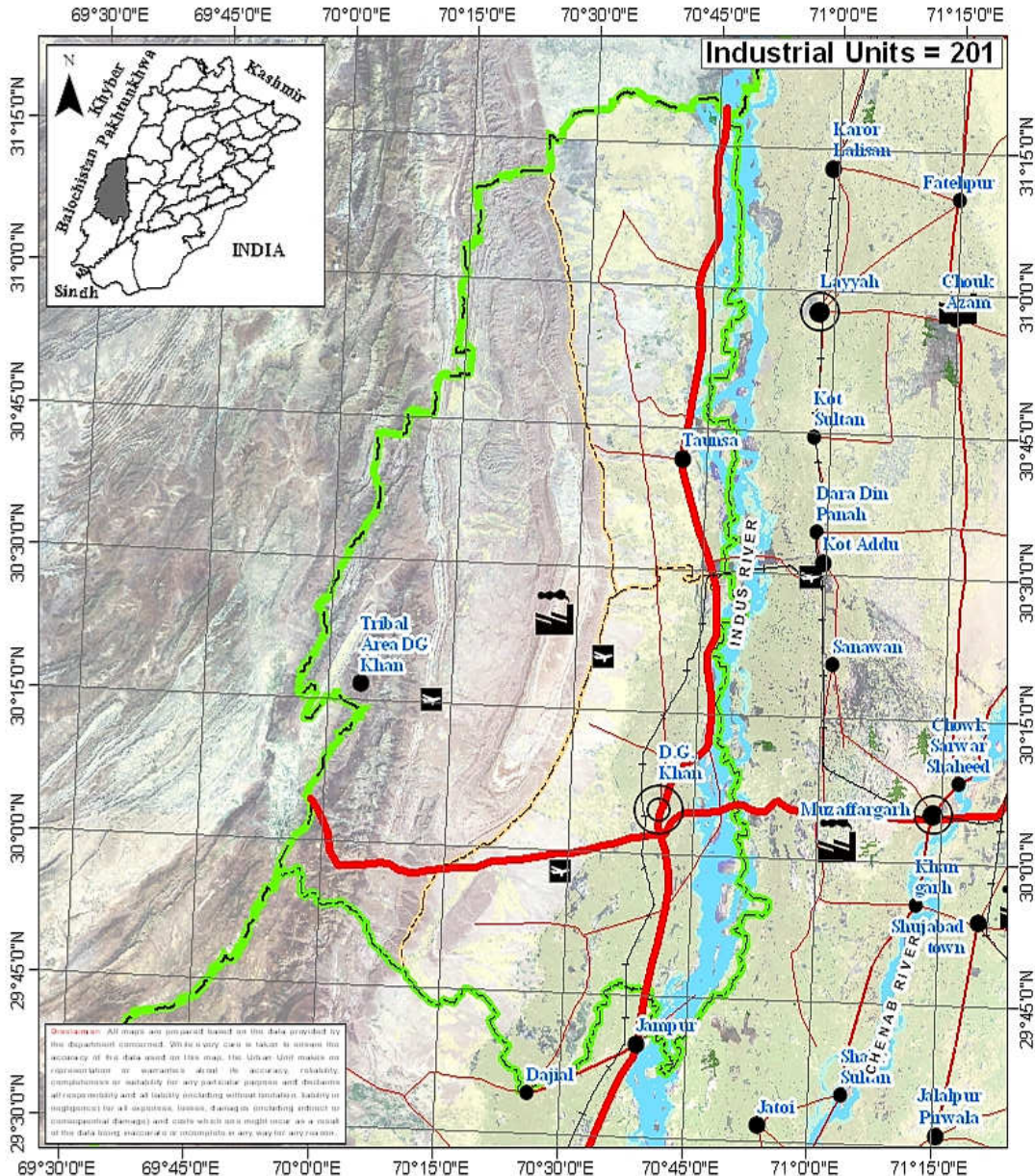
District Pre-Investment Study - 2012

Dera Gahzi Khan

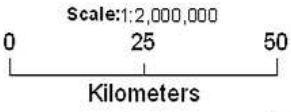


Directorate of Industries, Punjab
Poonch House, Multan Road, Lahore.

District DG Khan



Map No.: DGK-01 Date: 21-01-2013



Legend

- | | | |
|------------------------|------------------------|-------------------|
| Administrative: | Transportation: | Landuse: |
| Provincial Boundary | Motorway | River |
| District Boundary | Provincial Highway | Agricultural Land |
| Tehsil Boundary | Primary Road | Forest |
| Divisional Headquarter | Intercity Road | Industrial Estate |
| District Headquarter | Pakistan Railway | |
| Tehsil Headquarter | Airport | |

Director's Message

After spending past two years in Directorate of Industries, Punjab, I feel very privileged to be writing this message as Director Industries, Punjab.



This is the time we publish the 7th edition of the District Pre-Investment Studies of 36 Districts of Punjab, which has now become synonymous with our commitment to helping Industrialists, new entrepreneurs as well as Researchers. As Director Industries Punjab, I have seen much change, like:

- Relocation plan for the industrial units located within residential areas to industrial estates / positive areas declared by the District Governments.
- Adaptation of Boilers & Pressure Vessels Ordinance 2002.
- Conduct of Census of Manufacturing Industries.
- A scheme "Improvement and Up-gradation of Boilers Inspection Wing" has been approved by the Planning & Development Department, Government of the Punjab with the cost of Rs.10 Million.
- A Scheme "Sports Goods and Material Testing Laboratory" is under process in Planning & Development Department, Government of the Punjab. The estimated cost of the scheme is Rs.450 Million.
- The proposal for Capacity Building of Directorate of Industries Punjab is under process in Industries, Commerce & Investment Department, Government of the Punjab with the estimated cost of Rs.109.75 Million.
- We launch our website www.doi.pitb.gov.pk.

Looking ahead, we are focused on accelerating the execution of growth and promote industrial investment in the province. I am incredibly excited about this and truly believe the best of time for industrial investment is yet to come, Insha Allah.

(Muhammad Siddique Sheikh)
Director Industries, Punjab

Preface

Pre-investment studies for the districts in the Punjab were first published by the Directorate of Industries and Mineral Development, Punjab in the year 1979, with the prime objective of providing data which might interest private entrepreneurs and the framers of the Provincial and National Strategies in the industrial sector.

The second, third, fourth, fifth and sixth series of Pre-investment Studies for all districts of Punjab were published in 1983, 1992, 2002, 2006 and 2009 respectively. The present edition is seventh in the series.

This study basically updates the information contained in sixth series of district pre-investment studies. Efforts have been made to provide latest information collected through published sources, offices of the respective Government Departments/Agencies and District Offices of Industries Department. Quality addition of Industrial Policy Framework, recently promulgated Special Economic Zone Act 2012, Strategic Trade Policy Framework (2012-15) and Digital Maps by Urban Unit has improved these studies significantly.

The information has been updated in respect of population, manpower, production of agriculture crops, fruits, vegetables, livestock, forest resources, ores/minerals, infrastructural facilities such as technical/vocational training facilities, communication net-work, sub-soil water quality/effluent disposal

facilities, power/gas supply, tele-communication facilities, industrial estates, dry ports, industrial financing facilities, loaning scheme of PSIC, industrial policy, investment policy, fiscal incentives, Special Economic Zone Act 2012 and Strategic Trade Policy Framework (2012-15) etc. New policy measures regarding declaration of negative and specified positive areas have also been incorporated.

The study also includes information regarding existing industrial pattern, industry wise installed capacities and details regarding existing major industrial units in each district.

Effort has been made to identify various industries considering the availability of raw materials, skilled labour, linkage between industrial units and local/national/international demand. The suggested industries are, however, merely of indicative nature and it is advisable that prospective investors should conduct detailed feasibility report before making final decision for investment.

It is worthwhile to mention that industrial sector in Punjab has grown gradually from 6,223 industrial units in 1975 to 17,857 industrial undertakings in 2010. Sectoral growth has also been registered, resulting in substantial value addition. Value addition chain can be maximized by processing the agricultural industrial waste like rice husk, cotton stock, maize and corn cob. Herbal products is another untapped area. Live Stock, Dairy Development and poultry are fast growing sectors. Processing of food products can fetch handsome dividends. Currently information technology sector is growing by 39% annually in Pakistan. Fashion

industry is also developing rapidly. Similarly, chemical sector has lot to offer by utilizing the available mineral resources as raw material.

Issue of energy shortage can be addressed by dealing with power generation as an industry. Local as well as foreign investors have golden opportunity to set up power generation stations based on coal and other alternate fuels, under the captive power plants policy allowed in the newly promulgated SEZ Act, 2012. Punjab offers very good opportunity to the local as well as foreign investors to set up small, medium and heavy industries in variety of sectors. It has a growing market of over 90 million consumers, abundant manpower / labour force and cheap raw material with reasonably controlled law & order.

The Industries, Commerce & Investment Department has sufficient institutional frame work of attached and autonomous bodies to look after the industrial issues. Directorate of Industries, Small Industries Corporation (PSIC), Board of Investment (PBIT), Punjab Industrial Estates Development and Management Company (PIEDMC), Faisalabad Industrial Estates Development and Management Company (FIEDMC) have blend of professionals from the public as well as private sector. These legal entities are working in close coordination with the Chambers of Commerce and Industries systematically to promote industrialization and trade.

Development schemes regarding establishment of Industrial Resource Centre at the Directorate of Industries, setting up Sports & Material Testing Lab at EPZ, Sambrial and Industrial Safety Institute are under consideration with the Planning and Development

Department. Completion of these schemes will definitely help in promotion of industrialization process with enhanced industrial safety.

I must record my appreciation to Mr. Muhammad Akram Awan, Senior Economist, who effectively planned, coordinated and provided the guidance to his team members for completion of this study. Credit also goes to Mr. Muhammad Jamil Chishty, Staff Economist for his dedicated support rendered in the completion process of this study and Mr. Waseem Haider, Stenographer, for his tireless typing and composition work on computer.

I am grateful to all the District Officers, Enterprise & Investment Promotion who provided the relevant information of their respective districts for incorporating in pre-investment studies. I am also thankful to various Provincial Departments for supplying the required data to the Directorate of Industries. My special thanks are due to Dr. Nasir Javed, Project Director, Urban Unit for the provision of digital maps and the Punjab Printing Press.

Any suggestion for the improvement of the study will be welcomed.

Dec. 31, 2012

(Muhammad Siddique Sheikh)
Director Industries, Punjab

Contents

Section	Page
District at a Glance	1
1. Geographical Conditions	3
1.1 Brief Description of the District	3
1.2 Climate and General Soil Conditions	4
2. Man-Power	5
2.1 Total Population of the District	5
2.2 Man-Power Availability	6
2.3 Traditional Crafts	9
2.4 Geographical Indications	10
3. Natural Resources	11
3.1 Agriculture	11
a) Main Crops	11
b) Main Fruits	12
c) Main Vegetables	12
3.2 Forests	13
a) Location of Forests and Area under Afforestation	13
b) Production of Timber and Fire-wood	14
3.3 Livestock Population	14
a) Animal Population	14
b) Poultry Population	15
c) Availability of Hides/Skins & Slaughter House Wastes	15
d) Production of Wool	15
3.4 Ores and Minerals	16
a) Reserves	16
b) Major Minerals	16
c) Industrial Uses of Minerals	16

4. Infrastructural Facilities	19
4.1 Communication Network	19
a) Road Links	19
b) Rail Links	19
4.2 General Quality and Availability of Sub Soil Water	19
4.3 Effluent Disposal Facilities	20
4.4 Power Supply	20
4.5 Natural Gas Availability	20
4.6 Telecommunication Facilities	20
4.7 Social Infrastructural Facilities	20
4.8 Industrial Estates	21
4.9 Dry Port	21
4.10 Industrial Policy	21
4.11 Declaration of Negative Areas	26
4.12 Declaration of Positive Areas	27
4.13 Incentives for Investors to set a unit in EPZs	28
4.14 Pakistan's Investment Policy – Key Features	31
4.15 Industrial Financing Facilities	33
4.16 Salient Features of Loaning Scheme of PSIC	36
4.17 Salient Features of the SEZ Bill 2012	38
4.18 Strategic Trade Policy Frame Work (2012-2015)	40
5. Existing Pattern of Industrial Development	45
5.1 Description of Existing Industry	45
6. Future Industrial Potential	47
6.1 Agriculture	47
6.2 Livestock	48
6.3 Mineral	49
6.4 Industry	49
6.5 Demand Based Industries	50
6.6 List of Identified Projects	50

Annex	Page
Directory of Industrial Establishments	53
List of Contact Nos.	73
Bibliography	75

DISTRICT AT A GLANCE

1	Population (000 Numbers)	: 2,263
2	Area (Square Kilometres)	: 11,922
3	Population Density (per sq. km.)	: 190
4	Tehsils / Towns	: DG Khan, Taunsa Sharif and Tribal Areas.
5	Main Crops	: Sugarcane, Cotton, Wheat and Rice.
6	Main Fruits	: Citrus, Mango and Date.
7	Main Vegetables	: Onion, Potato, Cauliflower, Bottle Gourd, Turnip, Tomato, Ladyfinger, Carrot and Brinjal
8	Forest Resources (Area in Acres)	: 58,630
9	Mineral Resources	: Argillaceous Clay, Fuller's Earth, Gypsum, Limestone, Iron Ore and Silica Sand.
10	Total Metalled Roads (KM)	: 1,670
11	No. of Grid Stations	: 17
12	No. of Telephone Exchanges	: 29
13	Number of Industrial Units (Large Medium and Some Small Selected Sectors)	: 201

- 14 Type of Industrial Units : Agricultural Implements, Auto Parts, Carpets, Cement, Cold Storage, Cotton Ginning & Pressing, Flour Mills, Fruit Juices, Gypsum Industry, Ice Cream, LPG Gas, Pesticides & Insecticides, Petroleum Products, Power Generation, Rice Mills, Soap & Detergent, Textile Spinning, Tractors and Vegetable Ghee / Cooking Oil.

CHAPTER - I

GEOGRAPHICAL CONDITIONS

1.1 BRIEF DESCRIPTION OF THE DISTRICT

The Dera Ghazi Khan is located in a strip between the river Indus and the Koh-Suleman range of mountains separating it from the Baluchistan Province. It is surrounded by Dera Ismail Khan district on the North and the district of Rajanpur on its South. Indus river flows on the East across where lies the district of Muzafargarh and Layyah. Loralai and Sibbi district of Muzaffargarh and Layyah. Loralai and Sibbi districts of Baluchistan Province lies on the West separated by the Koh-Suleman range of mountains.

The district is spread over an area of 11,922 Square Kilometres and comprises the tehsils of:

- i) Dera Ghazi Khan
- ii) Taunsa Sharif
- iii) Tribal Areas

The important towns in the district are Kot Chutta, Sakhi Sarwar, Fort Minroo, Sahah Saddar Din, Shadan Lund, Vehova, Kot Qaisrani, Mangorotha, Mithanwali, peer Akil, Mana Ahmadani, Notabk, Jhoke Yar Shah Jakkar Imam Shah, Drahma, etc.

1.2 CLIMATE AND GENERAL SOIL CONDITIONS

The climate of district is hot in summer and cold in winter. The climate is almost uniform throughout the district except hilly-portion which has severe winter and a mild summer. Except the hilly trash, the land of the Dera Ghazi Khan tehsil is plain while the land of Taunsa Sharif is traversed by 'Road Kohis' which run from the mountains through the plains.

CHAPTER - II

MAN POWER

2.1 TOTAL POPULATION OF THE DISTRICT

According to Punjab Development Statistics 2011, total population of Dera Ghazi Khan district is 2,263 thousand persons out of which 1,177 thousand are males and 1,086 thousand are females. Density of population in the district is 190 persons per square Kilometre.

Tehsil wise distribution of Urban and Rural population is given in Table-1:

TABLE-1

Town-Wise Distribution of Urban & Rural Population

Town	Population (Thousand Nos.)		
	Urban	Rural	Total
DG Khan	262	1351	1613
Taunsa Sharif	53	433	486
Tribal Area	-	164	164
Total	315	1948	2263

Source: Punjab Development Statistics, 2011

2.2 MAN POWER AVAILABILITY

As regards availability of skilled labour, there are 17 technical / commercial / vocational institutions (9 for men, 8 for women) imparting training in various trades e.g. mechanical, electrical, auto-engineering, welding, wood working and commerce. Vocational institutions for women impart training in hand/machine embroidery, stitching and knitting etc. In all about 4,392 technicians/artisans/workers are trained every year. Details are given in Table-2.

TABLE - 2

Commercial and Technical Institutions

Sr #	Name & Description of Commercial / Technical Training Institutions	Types of Training Courses Offered	Duration of Course	Average No of Students Enrolled / Session
For Men				
1	Govt. College of Commerce, Block No.38, DG Khan	D.Com, B.Com, M.Com Computer Certificate	3 to 24 Months	968
2	Govt. Institute of Commerce, College Road, Taunsa Sharif	D.Com, Certificate in Computer Application	6 to 24 Months	218

3	Govt. College of Technology, Sakhi Sarwar Road, P.O. Box No.59, D.G.Khan	DAE Chem./ Civil/ Mech./ Elec./ Petroleum, Petro Chem, Microsoft IT Academy	3 to 36 Months	1471
4	Govt. Tech. Training Institute, Railway Road, DG Khan	Electrical, Auto & Farm, Draftsman, Radio & TV, Welder, Auto Cad, Certificate in Computer Application, Microsoft IT Academy	3 to 24 Months	478
5	Govt. Technical Training Centre (ABAD), College Road, Taunsa Sharif.	Electrical, Auto & Farm, Welder, Tailoring, Wood Work, Machine Shop	12 Months	46
6	Govt. Tech. Training Centre (ABAD), Near Zari Taraqiati Bank, Kot Chutta.	Electrician, Welder, Tractor, Operator, Certificate in Computer Application	6 to 12 Months	131

7	Govt. Technical Training Centre, Agriculture Machinery Training School, Near Circuit House, DG Khan	Auto & Farm Machinery, Auto Electrician, Driving, Tractor Operator	3 to 12 Months	101
8	Craft Development Centre, DG Khan	Handi Craft	12 Months	75
9	Govt. Technical Training Centre, Tribble Area (Fort Minro), Near Jamia Masjid, Ahl-e-Hadees, Khar.	Electrician, Welder, Motor Cycle Mechanic.	6 Months	45
For Women				
10	Govt. Institute of Commerce, Block No.9, Near DHQ. Hospital, DG Khan	D.Com, Certificate in Computer Application	6 to 24 Months	183
11	Govt. Vocational Training Institute, Block No.9, Railway Road, Near Civil Hospital, DG Khan	Beautician, Vocational Diploma, Fabric Printing, Cooking & Baking, Tailoring	6 to 24 Months	182
12	Govt. Vocational Training Institute, Mangrotha Road, Near Khawaja Atta Ullah House, Taunsa Sahrif	Beautician, Vocational Diploma, Domestic Tailoring	6 to 24 Months	105

13	Govt. Vocational Training Institute, (ABAD) Katchery Road, DG Khan	Beautician, Dress Designing & Making, Handicraft.	6 to 12 Months	175
14	Govt. Vocational Training Institute, (ABAD) Vehova, Taunsa Sahrif	Dress Making and Designing, Handicraft.	6 to 12 Months	55
15	Govt. Vocational Training Institute, (ABAD), Near Gadi House, Colledge Road, Taunsa Sahrif	Dress Making & Designing. Handicraft	6 to 12 Months	50
16	Sanat Zar, DG Khan	Knitting, Cutting, Embroidery	6 Months	50
17	Govt. Technical Training Centre, Tribble Area, Khor (Fort Minro).	Tailoring, Hand Embroidery, Machine Embroidery.	3 to 6 Months	59

Source: TEVTA

2.3 TRADITIONAL CRAFTS

The traditional crafts of the district Dera Ghazi Khan include making of mats, baskets, baan and hand fans from date-leaves in DG Khan Tehsil. Similar articles are also made in Fort Minroo from a grass called 'Peesh' which is grown in hilly areas. Woollen carpets called 'Khalase' are made from hand-spun goat hair, mainly in Fort Minroo.

Wooden combs are made in Taunsa Sharif. About 3280 persons are estimated to be engaged in these crafts in the district.

2.4 GEOGRAPHICAL INDICATIONS

The Project Director (Geographical Indications), Industries, Commerce & Investment Department, Government of the Punjab has identified the following Important Geographical Indications in the district:

- Chitarkari
- Sakhi Sarwari Chapple
- Embroidery
- Shesha pattri works.
- Kundar Mat
- Jeeg
- Persian Pattern Carpet.
- Kachi karrahi
- Wooden Comb

CHAPTER - III

NATURAL RESOURCES

3.1 AGRICULTURE

a) Main Crops

Sugarcane, Cotton, Wheat and Rice are the main crops grown in the district. Production of these crops during the period 2008-09 to 2010-11 is given in Table - 3.

TABLE-3

**Production of Main Crops
(2008-09 to 2010-11)**

Crop	Production (Th. M.Tons)		
	2008-09	2009-10	2010-11
Sugarcane	202	196.51	137.73
Cotton (000 Bales)	343.18	356.16	212.50
Wheat	388.36	448.69	463.56
Rice	80.22	98.01	60.36

Source: Directorate of Agriculture, Crop Reporting Service, Punjab

Besides, Guar Seed, Sunflower, Tobacco, Jawar, Bajra, Moong, Mash, Masoor, Maize and Oil Seed such as Rape / Mustard are also grown in minor quantities in the district.

b) Main Fruits

Citrus, Mango and Dates are main fruits grown in the district. Production of these fruits during the period 2008-09 to 2010-11 is given in Table - 4

TABLE-4

**Production of Main Fruits
(2008-09 to 2010-11)**

Fruit	Production (M.Tons)		
	2008-09	2009-10	2010-11
Citrus	2565	3089	3107
Mango	1406	1406	1350
Dates	582	582	559

Source: Directorate of Agriculture, Crop Reporting Service, Punjab

Besides, Guava, Jaman, Phalse and Pomegranate are also grown in minor quantities in the district.

c) Main Vegetables

Onion, Potato, Cauliflower, Bottle Gourd, Turnip, Tomato, Ladyfinger, Carrot and Brinjal are main vegetables grown in the district. Production of these vegetables during the period 2008-09 to 2010-11 is given in Table - 5

TABLE-5

**Production of Main Vegetables
(2008-09 to 2010-11)**

Vegetable	Production (M.Tons)		
	2008-09	2009-10	2010-11
Onion	23345	21397	24691
Potato	16583	16260	16984
Cauliflower	7408	8239	8710
Bottle Gourd	2987	1033	2489
Turnip	3772	3853	3913
Tomato	8149	10183	14331
Lady Finger	1047	1069	791
Carrot	4111	3920	4030
Brinjal	1497	275	1401

Source: Directorate of Agriculture, Crop Reporting Service, Punjab

Besides, Peas and Chillies are also grown in the district in minor quantities.

3.2 FORESTS

a) Location of Forests and Area under Afforestation

An area of 58630 Acres is under forests, which is about 1.99% of the total area of the district. There is also linear plantation of 1047.78 Km alongside the roads/rails/canals in the district. Trees grown in the area are Kau, Phalai, Kikar and Shisham.

b) Production of Timber and Firewood

The production of Timber and Fire-Wood in the district during the period 2008-09 to 2010-11 is given in Table 6.

TABLE-6

**Production of Timber & Firewood
(2008-09 to 2010-11)**

Year	Production (Cubic Meter)	
	Timber	Firewood
2008-09	296	15025
2009-10	-	-
2010-11	1315	6300

Source: Forestry, Wildlife and Fisheries Department

3.3 LIVESTOCK POPULATION

a) Animal Population

The animal population of the district is given in Table - 7.

TABLE - 7

ANIMAL POPULATION

Animals	Population (Th Heads)
Goats	1758
Sheep	1189
Cattle	780
Buffaloes	255

Source: Livestock & Dairy Development Department.

b) Poultry Population

As per Punjab Development Statistics 2011, there are 189 broiler and 6 layer poultry farms in the district having rearing capacity of 2415 and 27 thousand birds respectively. There is also one breeding farm having rearing capacity of 3 thousand birds.

c) Availability of Hides / Skins and Slaughter House Wastes

As per Punjab Development Statistics 2011, 181800 animals were slaughtered in recognized / un-recognized slaughter houses in the district during the year 2009-10, which is a reasonable estimate of the availability of hides and skins in the district.

The availability of slaughter house by - products is estimated as under:-

Blood	66.357 M.Tons
Bones	314.33 M.Tons
Tallow	60.54 M.Tons

d) Production of Wool

The sheep population of 1189 thousand heads in the district is expected to yield about 1189 M.Tons of coarse wool annually.

3.4 ORES AND MINERALS

a) Reserves

Minerals reserves like Argillaceous Clay, Gypsum, Limestone, Fuller's Earth, Iron Ore and Silica Sand are being commercially exploited in the district.

b) Major Minerals

Production of the major minerals for the period 2008-09 to 2010-11 is given in Table-8.

TABLE-8

**Production of Minerals
(2008-09 to 2010-11)**

Mineral	Production (Th. M.Tons)		
	2008-09	2009-10	2010-11
Limestone	2339465	2422992	2771169
Argillaceous Clay	551888	600288	601450
Gypsum	158872	189883	140556
Silica Sand	36598	76010	55700
Iron Ore	5315	47000	35792
Fuller Earth	3140	6190	1490

Source: Directorate General of Mines & Minerals, Punjab

c) Industrial uses of Minerals

The industrial uses of major minerals are given hereunder:-

Argillaceous Clay	=	Cement
Limestone	=	Cement, Lime, Building Construction, etc.
Gypsum	=	Cement, Sulphates, Sulphuric Acid, Plaster of Paris, Fertilizer/Soil Conditioner, Filler in Paper, Paints, Rubber, Tiles, etc.
Fuller Earth	=	Refining, Foils & Fats, Soap, Paint and in drilling operation.
Silica Sand	=	Glass, White Cement, Sodium Silicate and Foundries.
Iron Ore	=	Fertilizer, Magnet, Medicine, Electronic Industries, Printing units, Plastics and Cosmetics.

CHAPTER - IV

INFRASTRUCTURAL FACILITIES

4.1 COMMUNICATION NETWORK

a) Road Links

The district has a total metalled road-length of 1699.98 Kilometres. The district is linked with D.G.Khan, Rajanpur, Muzaffargarh, Barkhan, Dera Ismail Khan and Layyah Districts through metalled road.

b) Rail Links

Shahdan Lund, D.G.Khan and Kot Chutta are the major Rail heads in the district. The district is linked with Layyah, Muzaffargarh and Rajanpur districts through railway network.

4.2 GENERAL QUALITY AND AVAILABILITY OF SUB-SOIL WATER

Sufficient underground water resources are available in the district. However, the underground water on the western side of the railway line, right from Taunsa Sharif upto Sakhisarwar is brackish while the area on the other side of the railway track has sweet water.

4.3 EFFLUENT DISPOSAL FACILITIES

There is no mentionable nullah for the disposal of industrial effluent in the district. However, Tehsil Tanusa Sharif is traversed by beds of hill-torrents which could possible be used for disposal of pre-treated industrial effluent after prior written permission from Irrigation and Power Department, Government of the Punjab.

4.4 POWER SUPPLY

There are 17 grid stations in the district ranging in capacity from 66 KV to 132 KV.

4.5 NATURAL GAS AVAILABILITY

At present natural gas is available in the district.

4.6 TELE-COMMUNICATION FACILITIES

There are 29 telephone exchanges operating in the district, ranging in capacities from 200 lines to 14736 lines. Cellular phone services are available in the district.

4.7 SOCIAL INFRA-STRUCTURAL FACILITIES

Social infra-structural facilities available in the district are given in Table - 9.

TABLE - 9**SOCIAL INFRA-STRUCTURAL FACILITIES**

Tehsil	Primary / Middle / high / higher secondary School	College	Hospital	Police station	Railway stations	Post office	Banks
D.G. Khan	891	8	5	14	7	21	65
Taunsa Sharif	508	4	1	3	0	20	18
Tribal Area	280	-	-	24	0	4	4
Total:	1679	12	6	41	7	45	87

Source: Punjab Development Statistics 2011 / Respective District Offices.

4.8 INDUSTRIAL ESTATE

At present there is no industrial estate in the district.

4.9 DRY PORT

There is no dry port in the district.

4.10 INDUSTRIAL POLICY

- Foreign investors are permitted to hold 100% of the equity of industrial projects without any permission of the Government.

- No prior Government sanction is required for establishment of an industry outside Ex-Municipal Territorial Limits of Town Committees / Municipal Corporation irrespective of its cost and size except the following covered under schedule 'C':-
 - a. Arms & Ammunition.
 - b. Security Printing Currency & Mint.
 - c. High Explosives.
 - d. Radio Active Substances.
 - e. Alcoholic Beverages or Liquors.
- 1. No industrial unit mentioned in Schedule-A of the notification No. AEA-III-4-3-9/91, dated 30.09.2002 or industrial unit exceeding a total cost of Rs. 100.00 million shall be set up within 10 miles (16 Kms) of international border:

List of Manufacturing Industries

- a) Basic Metal Industry.
- b) Petro-Chemical Industries (Excluding Products Industries).
- c) Large size Machine Tool Factories (Limit of Investment to be determined).
- d) Heavy Foundry Works.
- e) Heavy Electric Complexes.
- f) Heavy Mechanical Complexes.
- g) Electronics Industries.
- h) Major Vehicle Assembly Plants.
- i) Ordinance Factories.

- j) Explosives, Nitric acid and Sulphuric acid plants.
 - k) Vehicular Tires and Tubes Industries.
 - l) Locomotives and Railway Carriage manufacturing plants.
 - m) Government Mint.
 - n) Security Printing Press involved in whole time printing of sensitive documents / currency notes.
 - o) Manufacture of optical glass and optics.
 - p) Nickle cadmium battery industries.
 - q) Nuclear / Separation Plants.
 - r) Large Power Generating Stations.
 - s) Large oil Storage units.
 - t) Oil refineries.
2. No industrial unit shall be set up in areas affected by flood flowing transversely in the strip of one mile of either side across the Grand Trunk Road from Shahdara Town to Muridke Town, without prior permission of the Provincial Government.
3. According to the notification No. AEA-III-3-5/2003 (Vol-III), dated 06.12.2006, “no new sugar mill shall be setup and no enlargement in capacity of the existing sugar mills is allowed in the Province”.
4. Each district Government may declare “negative area” for industry. Such “negative area” be determined by a District Committee

after consultation with all stake-holders in light of general policy guidelines issued by the Industries, Commerce & Investment Department and exemptions allowed under Schedule 'B' of this Notification as under:

List of Service Industries

- a) Furniture (excluding Band Saw) and also excluding storing Timber / Wood.
- b) Tailoring/ Readymade garments.
- c) Laundry / Dry Cleaning.
- d) Bakery (excluding confectionery).
- e) Syrups (excluding squashes)
- f) Cosmetics.
- g) Service workshop.
- h) Cereal Products like vermicilles.
- i) Candles making.
- j) Printing and Packaging.
- k) Hand loom carpet weaving.
- l) Hotels.
- m) Bidi manufacturing.
- n) Handmade shoes / shoe repairing workshop.
- o) Spooling and thread balls.
- p) Small Hosiery units employing not more than 10 workers.
- q) Atta Chakkies.
- r) Installation of Chaff cutters.
- s) Cotton Grading.
- t) Other small industrial undertakings which do not fall under the Sixth schedule of the Punjab Local Government Ordinance, 2001.

“Other small industrial undertakings” would mean an industrial undertaking in which the total fixed assets (including the cost of land) do not exceed Rs.1.0 million (Rupees one million).

5. No industrial unit mentioned in Schedule ‘C’ of this Notification shall be set up anywhere in the Punjab without prior approval of the Government.
6. The Government reserves the right to refuse establishment / enhancement of any industrial undertaking which is in contravention of the public interest, ecology or any other law / rules for the time being in force.
7. The Government may relax any of the provisions of this notification in case of a particular unit or industry or class of units or industries.
8. NOC from Environment Protection Department, Govt. of the Punjab is required for setting up new Industries.
 - Tourism has been given the status of industry in accordance with Ministry of Industries & Production Circular No. 1-129/99-INV-IV dated 2nd August 1999.
 - The Housing and Construction Sector has also been declared as industry (Finance

Division Notification No. 10(10)/IF-11/98, dated 07.04.1999 and 04.06.1999.

- In accordance with Government notification No. 3(2)/97-INV-IV dated 05.05.1997, Computer Software and Information Technology (IT) have been declared as Industry.

4.11 DECLARATION OF NEGATIVE AREAS

In pursuance of the Clause 4 of the Location Policy notified on 30-09-2002, by the Industries, Commerce & Investment Department, Government of the Punjab, the District Govt. Dera Ghazi Khan has declared the following negative areas:-

- a) Area/Locality falling within and beyond one Kilometre of former Municipal/Town Committee Limits.
- b) Strategic areas and installations.
- c) Within 220 ft. from the Indus Highway and Multan Dera Road
- d) "150" Meters Residential Locality.
- e) Flood effected areas.
- f) All Riverine Belts.
- g) Areas directly hit by following Hill-torrents:
 - i) Karar Buzdar
 - ii) Sangar
 - iii) Sori Lund

- iv) Vadoor
- v) Mathawn

4.12 DECLARATION OF SPECIFIED POSITIVE AREAS

Vide the Finance Act, 2008, the Government of Pakistan has enacted a new section “23A” in the Income Tax Ordinance 2001. The Section “23A” is reproduced below:-

“First year allowance.- (1) Plant, Machinery and equipment installed by any industrial undertaking setup in specified rural and under developed areas, and owned and managed by a company shall be allowed first year allowance in lieu of initial allowance under Section 23 at the rate specified in Part II of the third schedule against the cost of the “eligible depreciable assets” put to use after July 1st,2008.

(2) The provision of Section 23 except sub-sections (1) and (2), thereof, shall mutatis mutandis apply.

The Federal Government may notify “Specified areas” for the purpose of sub-section(1)”

In pursuance of the above mentioned notification District Government D.G.Khan has identified and approved the following specified positive areas for setting up industrial undertakings:

- DG Khan
 - On both sides of Sakhisarwar Road from DG Khan Canal Tool Plaza to Mountain of Sakhisarwar.
 - On both sides of Jampur Road from Pull Shoria to Mana Bangla.
 - On both sides of Multan Road from By Pass to P.S.Drahama.
 - On both sides of Taunsa Road from By Pass to Shadan Lund.
- Taunsa Sharif
 - On both sides of D.I.Khan Road from By Pass to Retra.
 - On both sides of D.G.Khan Road from Sokar More to Village Ahmadani.

4.13 INCENTIVES FOR INVESTORS TO SETUP A UNIT IN EPZs

- a) According to EPZs Authorities, following incentives are available in the Export Processing Zones

1. 100% ownership rights.
2. 100% repatriation of capital & profits.
3. No minimum or maximum limit for investment.
4. Duty free imports of machinery, equipment & material.
5. No sales tax on input goods including electricity & gas bills.
6. Obsolete/old machinery can be sold in domestic market of Pakistan after payment of applicable duties & taxes.
7. Freedom from national import restrictions.
8. Foreign Exchange control regulation of Pakistan not applicable.
9. Defective goods/waste can be sold in domestic market after payment of applicable duties, maximum upto 3% of total value of export.
10. Duty free vehicle allowed under certain conditions. After 5 years of use, vehicles can be disposed off in domestic market on payment of duty on depreciated value.
11. Domestic market of Pakistan available on same conditions as for imports from other countries.
12. Units operating in EPZs can undertake sub-contracting for units of tariff area subject to payment of duty and taxes on value addition only.

13. Only EPZA is authorized to collect Presumptive tax at the time of export of goods which would be final tax liability.
 14. EPZ units allowed to supply goods to Custom manufacturing bonds.
 15. Production oriented labour laws to be solely regulated by the Authority.
 16. EPZ manufacturer will be treated at par with bonded manufacturers in tariff area for any future incentives to be announced for exporters.
 17. Relief from double taxation subject to bilateral agreement.
- b) Facilities to Investors for setting up a unit in EPZs of Pakistan.
1. One window service and simplified procedure.
 2. All infrastructural facilities like water, electricity, gas, telex, fax and telecommunication system are made available by EPZA.
 3. Skilled & un-skilled labour available in abundance.
 4. Sub-contracting without limit on variety and quantity is allowed outside the zone as well as within the zone.
 5. The garment manufacturing units located in Export Processing Zones are eligible to participate in auction of quotas.

6. GSP concessions given by various countries to imports from Pakistan are available to the manufacturers in the zone.
7. Peaceful, secure and environmentally protected / pollution free work area.
8. Inter-unit transfer of finished goods among exporting units allowed.

4.14 PAKISTAN'S INVESTMENT POLICY - KEY FEATURES

General

- The investment policy is liberal and business friendly as it has been designed in consultation with businessmen, investors and representative forums as well as the Multinational Companies (MNCs).
- It provides equal investment opportunities for both domestic and foreign investors.
- All economic sectors open for FDI (Foreign Direct Investment).
- 100% foreign equity allowed.
- No government sanction required.
- Foreign investment on repatriable basis is allowed in all economic sector including manufacturing, agriculture, services, infrastructure and social sectors.
- Foreign investment in Agriculture projects allowed on joint-venture basis by associating minimum local equity of 40%.
- Remittance of Royalty, Technical & Franchise Fee, Capital, Profits, Dividends allowed.

- Minimum foreign equity for non-manufacturing including services sector has been reduced from \$ 0.3 to \$ 0.15 million. In Agriculture, infrastructure and social sectors, it is \$ 0.3 million.

Tariff and Tax Incentives

- To keep Pakistan competitive in international tariff 5% customs duty has been allowed on import of plant and machinery which is not manufactured locally.
- Sales tax 0% across the board.
- 0% duty on import of raw material for export industry.
- 0% duty on import of agriculture machinery.
- Tax relief in shape of Initial Depreciation Allowance (IDA) has been provided as 50% of machinery cost across the board.
- Tax relief has also been provided for expansion and Balancing, Modernization & Replacement (BMR) in existing industries.

Policy Package of Pakistan

Policy Parameters	Mfg. Sector	Non-Manufacturing Sectors		
		Agriculture	Infrastructure & Social	Services including IT & Telecom Services
Govt. Permission	Not required except for specified industries*	Not required except specific licences from concerned agencies.		

Remittance of capital, profits, dividends, etc.	Allowed	Allowed		
Upper Limit of foreign equity allowed	100%	100%	100%	100%
Minimum Investment Amount (M \$)	No	0.3	0.3	0.15
Customs duty on import of PME**	5%	0%	5%	0-5%
Tax relief (IDA***, % of PME cost)	50%	50%		
Royalty & Technical Fee	No restriction for payment of royalty & technical fee.	Initial lump-sum up to \$100,000 Max Rate 5% of net sales - Initial period 5 years		

* Specified Industries:

- i) Arms and ammunitions
- ii) High Explosives
- iii) Radioactive substances
- iv) Security Printing
- v) Currency and mint

** PME = Plant, Machinery and Equipment

*** IDA = Initial Depreciation Allowance

4.15 INDUSTRIAL FINANCING FACILITIES

Following Financial Institutions in the country are providing various types of fixed investment

industrial financing in the foreign and local currency to the industrial sector for establishment of new industrial units as well as for Expansion, Balancing, Modernization and Replacement (BMR) of existing industrial units within the frame-work of industrial/financial policies of the Government of Pakistan.

- 1 AlBaraka Bank (Pakistan) Limited.
- 2 Allied Bank Limited.
- 3 Askari Bank Limited.
- 4 Bank Alfalah Limited.
- 5 Bank Al-Habib Limited.
- 6 Bank Islami Pakistan Limited.
- 7 Barclays Bank PLC.
- 8 Burj Bank Limited.
- 9 Citi Bank N.A.
- 10 Deutsche Bank A.G.
- 11 Dubai Islamic Bank Pakistan Limited.
- 12 Faysal Bank Limited.
- 13 First Women Bank Limited.
- 14 Habib Bank Limited.
- 15 Habib Metropolitan Bank Limited.
- 16 HSBC Bank Middle East Limited.
- 17 Industrial and Commercial Bank of China
- 18 Industrial Development Bank of Pakistan.
- 19 JS Bank Limited.

- 20 KASB Bank Limited.
- 21 MCB Bank Limited.
- 22 Meezan Bank Limited.
- 23 National Bank of Pakistan.
- 24 NIB Bank Limited.
- 25 Oman International Bank S.A.O.G.
- 26 S.M.E. Bank Limited.
- 27 Samba Bank Limited
- 28 Silk Bank Limited.
- 29 Sindh Bank Limited.
- 30 Soneri Bank Limited.
- 31 Standard Chartered Bank (Pakistan) Limited.
- 32 Summit Bank Limited
- 33 The Bank of Khyber
- 34 The Bank of Punjab
- 35 The Bank of Tokyo-Mitsubishi Limited.
- 36 The Punjab Provincial Cooperative Bank Limited.
- 37 United Bank Limited.
- 38 Zarai Taraqiati Bank Limited.

Source: State Bank of Pakistan

List of Development Financial Institutions (DFIs)

- 1 Bankers Equity Limited.
- 2 House Building Finance Company Limited.

- 3 Pak Brunei Investment Company Limited
- 4 Pak-China Investment Company Limited.
- 5 Pak Oman Investment Company Limited.
- 6 PAIR Investment Company Limited.
- 7 Pakistan Kuwait Investment Company Limited.
- 8 Pak-Libya Holding Company Limited.
- 9 Saudi Pak Industrial & Agricultural Investment Company Limited.

Source: State Bank of Pakistan

Besides the financial institutions mentioned above a number of Leasing Companies, Modaraba Companies, Investment Banks are also providing financing facilities to the industrial sector. Punjab Small Industries Corporation also extends financial assistance to the small/cottage industrial units.

4.16 SALIENT FEATURES OF LOANING SCHEME OF PSIC

Punjab Small Industries Corporation (PSIC) is a body corporate enacted in 1973. One of core functions of PSIC is financial assistance programme for prospective entrepreneurs, skilled youth, artisans and craftsmen all over the Punjab. The priority sectors are as under:

- Service Industries.
- Agro / Agro Support Industries.

- Food Processing Industries.
- Export Oriented Industries.
- Import Substitution Industries.
- Information Technology (IT) Project.
- Handicraft Industry.
- Women Enterprises.

PSIC started credit assistance programme during 1984 and completed 13 schemes up till now. An amount of Rs. 4079 Million has been disbursed to 19,580 entrepreneurs in 36 Districts of Punjab with the recovery rate of 88% that indicates proper utilization of loans.

The maximum loan limit is Rs.3 Million with debit equity ratio of 60:40. The credit assistance facility available for new projects, BMR and Working Capital. The markup rate varies from 0% to 12%. The repayment period of loan is from 3 years to 6 years with grace period of 3 months to 6 months.

Recently, Government of Punjab has provided an amount of Rs. 2000 Million for disbursement through Service Provider Organization i.e. M/s Akhuwat to un-employed and skilled persons of PVTC, TEVTA, SANATZAR's of Social Welfare Department or other unemployed youth having good business plan.

Up till now, M/s Akhuwat has disbursed an amount of Rs. 1650.00 Million to 94,960 poor household in 33 vocations with average loan size of Rs. 17,382

in Punjab through its 142 offices in 30 districts of the Punjab.

To promote the traditional handicrafts in Punjab, PSIC has also launched dedicated credit assistance schemes for the craftsmen at subsidized markup rates. These craftsmen have also been provided marketing facilities through Pakistan Handicrafts Shops.

4.17 SALIENT FEATURES OF THE SEZ BILL 2012

The Law of SEZ has been made to meet the global challenges of competitiveness to attract FDI. The Law/bill will allow to create industrial clusters with liberal incentives, infrastructure, investor facilitation services to enhance productivity and reduce cost of doing business for economic development and poverty reduction. The Law further envisages to reduce processes through SEZ in Pakistan. The establishment of SEZs will attract both domestic as well as international investors. The SEZ would play a pivotal role in the economic development of Pakistan as has been witnessed in case of China, Malaysia, Thailand and other states.

It extends to the whole of Pakistan and overrides other laws (anything contrary);

- All SEZ whether Public, Public-Private or Private-Private to be governed under this Act;

- The Board of Approval (BOA) headed by the Prime Minister of Pakistan with the Minister for Finance as the Vice Chairman shall meet as frequently as required but not less than twice a year and decisions shall be taken by a majority of the total membership present and voting;
- SEZs will have exemption from customs duties & taxes for all Capital Goods imported into Pakistan for the development , operations and maintenance of a SEZ;
- Exemption from all taxes on income accruable in relation to the development and operations of the SEZ for a period of ten years, starting from the date of signing of the Development Agreement.
- Zone Enterprises have exemption from custom duties etc. on imports of Capital Goods;
- Exemption from taxes on income for a period of 10 years starting from the date the Development certifies that the Zone Enterprise has commenced commercial operations in the relevant SEZ;

There is no limit to the economic potential of Pakistan. The challenge is to create the enabling environment in which this can be realized. Special Economic zones bill is a step towards the economic stability in the country.

4.18 STRATEGIC TRADE POLICY FRAME WORK (2012-2015)

The government unveiled on 29 January, 2013 a medium term (2012-2015) Strategic Trade Policy Framework, setting a cumulative export target of \$95 billion for three years. The framework, the second announced by the federal government will be implemented with a funding of Rs. 26.14 billion. In the first year, Rs.5 billion will be spent on providing subsidies and support to identified sectors.

The focus of the policy is on promoting regional trade and regulatory efficiency, promoting agro-processed exports, increasing exports from less developed regions, revamping export promotion agencies, increasing green exports, enhancing role of women in exports and pursuing product and market development and diversification.

The salient features of the policy include institutional interventions, export development initiatives and regulatory amendments. The policy, offers cash assistance to 14 sectors along with 19 regulatory frameworks, including ban on products as a protective measure against environmental and health hazards. The new framework is designed to provide assistance only to the non-textile sectors.

Institutional Measures: The government will setup institutions like an Export-Import (Exim) Bank, Pakistan Land Port Authority; Leather Export Promotion Council and a Services Trade Development Council.

Export Development: Major initiatives in the Policy included allowing mark-up rate support of two per cent on prevailing LTFF for future import and purchase of machinery. An allocation of Rs.500 million has been proposed for schemes to be implemented this year. The total amount to be spent in three years is projected at Rs.3 billion. A mark-up support of 1.5% will be provided on export finance scheme (EFS) to selected sectors at a cost of Rs. 1.25 billion, including Rs. 200 million in 2012-2013.

The sectors for EFS support are fish and fish preparations, fruit and vegetables, spices, meat and meat preparations, carpets and rugs, sports goods, footwear, leather products, surgical goods, cutlery, onyx products, pharmaceuticals, electric fans, transport equipment, electrical machinery, specialized machinery, furniture, handicrafts and computer-related services.

An amount of Rs.14 billion will be given as adhoc relief at three per cent of FoB to offset the impact of higher cost of utilities for exporters in selected sectors. The measure will cost Rs.3bn this year. An

amount of Rs.2 billion-Rs125 million will be allocated for marketing development assistance for regional countries.

A Rs. 25 million allocation has been proposed for export promotion campaigns for agro-processed products; Rs. 400 million for encouraging opening of retail outlets; and Rs.400m for subsidizing 50% cost of plant and machinery for establishing processing plants for meat, fruits, vegetables, dates and olives in Azad Jammu and Kashmir, Baluchistan, Gilgit - Baltistan and Khyber Pakhtunkhwa.

An amount of Rs.30 million will be allocated for upgrading rice inspection laboratories, Rs. 20 million for subsidy at 100% of the prevailing mark-up rate for establishing mining and processing units in Khyber Pakhtunkhwa and Baluchistan.

Another Rs.20 million has been allocated for strengthening women's chamber of commerce and industry, Rs.32 million for setting up a resource management cell at the ministry of commerce, Rs.28 million for establishing leather export promotion council and Rs.70 million for services export development council.

Regulatory Measures

Unrestricted import of used motorized wheelchairs and five-year-old used or second-hand ambulances has been allowed. Two per cent of export

proceeds will be allowed to manufacturers-cum-exporters for duty-free import of accessories for value-addition for leather garments and made-ups. Import of non-hazardous plastic scrap has been allowed for industrial consumers for use as raw material. A ban has been imposed on import of plastic waste, hospital waste, used sewerage pipes and chemical containers.

Import of non-sterilized surgical needles and syringes will be restricted to industrial units, condition of Euro-II may be made applicable on import of all types of specialized vehicles, such as crane-mounted lorries, dump trucks and mixtures lorries. The import of used sprinkle lorries will be restricted to a maximum of five year old. All goods from banned list imported in commercial quality shall be allowed to re-export at importer/shipping lines cost. The imported substandard goods from the restricted list should be destroyed within a period of six months without offering any release.

Import of waste and scrape of tyres in completely shredded/ cut form will only be allowed to industrial consumers; domestic standards will equally apply to imported goods as well.

Construction engineering and electrical companies will be allowed to retain abroad the exported machinery to carry out work on export-cum-import basis with the condition that they will import the

same on the conclusion of the contract against indemnity bond.

All exporters of edible products are to be registered and export of vegetable ghee and cooking oil will be allowed in packaging of up to 25kg to encourage value-addition.

Steps to contain Environmental & Health Hazards

- Ban on import of plastic waste/scrap-hospital waste, used sewerage pipes and chemical containers.
- Restricting import of non-sterilized surgical needles and syringes to industrial units.
- Only the more fuel efficient Euro-II category crane-mounted lorries, dump trucks, mixture lorries, etc, will be imported.
- Imported used tyres will only be allowed for industrial use.

Institutions to be Setup

- Export-Import Bank.
- Pakistan Land Port Authority.
- Leather Export Promotion Council.
- Service Trade Development Council.

CHAPTER - V

EXISTING PATTERN OF INDUSTRIAL DEVELOPMENT

5.1 DESCRIPTION OF EXISTING INDUSTRIES

There are about 201 large, medium and some small industrial units in the district. Industry-wise installed capacity of major industrial units is given in Table-10.

TABLE-10

Industry-wise Installed Capacity

Sr. #	Industry	No. of units	Annual Installed Capacity
1	Agriculture Implements	12	836 No.
2	Auto Parts	2	255 Th. Nos.
3	Carpets	25	53 Th. Sq.Ft.
4	Cement	1	6700 M.Tons /Day
5	Cold Storage	9	199700 Bags/Crates
6	Cotton Ginning & Pressing	70	256 Sawgins, 40 Press, 21 Expellers
7	Flour Mills	18	2500 M.Tons / Day
8	Fruit Juices	2	471500 Crates
9	Gypsum Industry	1	150000 M.Tons
10	Ice Cream	2	2000 Litres.
11	LPG Gas	4	15350 M.Tons
12	Pesticides & Insecticides	2	6000 M.Tons
13	Petroleum Products	1	20000 MMSCF, 1000000 Barrels
14	Power Generation	1	23 MW

15	Rice Mills	39	26 Shellers, 23 Hullers
16	Soap & Detergent	2	1000 M. Tons
17	Textile Spinning	8	271472 Spindles
18	Tractors	1	15000 Nos.
19	Vegetable Ghee / Cooking Oil	1	18000 M.Tons

Source: District Officer (E&IP), DG Khan.

Note: For further details visit: www.doi.pitb.gov.pk

CHAPTER - VI

FUTURE INDUSTRIAL POTENTIAL

Keeping in view the availability of raw material, skilled labour, linkage between the industrial units, local / national / international demand, future industrial potential of district DG Khan is discussed hereunder:

It would, however, be kept in mind that though the above mentioned factors facilitate the success of any industrial unit, yet the entire success depends upon the investors / entrepreneurs and the capabilities of the personnel having the managerial control because any of these factors, if lacking is manageable. Therefore, it is advisable that detailed feasibility of industrial projects must be carried out before making final decision for investment.

6.1 AGRICULTURE

Main crops of the district DG Khan are sugarcane, cotton, wheat and rice. Over the period 2009-10 to 2010-11, the average annual production of sugarcane was 178.85 thousand M.Tons, cotton was about 303.95 thousand bales, wheat was 433.54 thousand M.Tons whereas rice was 79.53 thousand M.Tons. The (Chapter-3, Section 3.1)

Main Fruits of the District are Citrus, Mango and Dates. Their average annual production over the period 2008-9 to 2010-11 was 2.920, 1.387 and 0.57 thousand M. Tons.

At present, there are 8 textile spinning mills, 18 flour mills and two fruit juice units already operating in the district.

In view of the above, there seems good prospects for power-looms units, sizing units, towel manufacturing units, hosiery and even textile processing and printing.

6.2 LIVESTOCK

As per Punjab Development Statistics 2011, the population of cattle buffaloes, sheep and goats was 780, 255, 1189 and 1758 thousand heads. The annual availability of hides and skins is estimated at 181800 pieces. As regards poultry, there are 189 broiler, 6 layer poultry farms having rearing capacity of 2415 and 27 thousand birds respectively. There is one breeding farm having rearing capacity of three thousand birds.

In view of above, there exists good scope for cattle/goat/sheep fattening farms, hatchery/ breeding poultry farm, animal/ poultry feed and a tannery.

6.3 MINERAL

Large deposits of argillaceous, gypsum, fuller earth silica sand, iron ore and limestone exist in the district. At present, there are cement and gypsum processing/plaster of paris manufacturing units in the district. There is a big scope for gypsum processing units because gypsum is also used for reclamation the saline areas. In Punjab thousand hectares are already affected by the salinity.

Besides, there is a big scope for another cement unit and there exists virgin market for activated fuller's earth unit. It is used as a bleaching agent in sugar, edible oil, glucose and pharmaceutical industries and the of oil-wells. Its entire requirements are being met through imports.

6.4 INDUSTRY

Besides, textile, cement and gypsum units, other important industries operating in the district are Fiat Tractors Manufacturing Unit and Auto Parts i.e. oil, fuel and air filters manufacturing units in the district. It is strongly viewed that by developing working relations with the tractors plant, some important engineering industries can be developed in the district e.g. good quality agricultural implements like trolleys, tillers, reapers, harrows, drills, rotavators, threshers,

pulleys, etc., accumulated batteries for tractors and other auto mobiles.

6.5 DEMAND BASED INDUSTRIES

DG Khan is adjoined on the West by Loralai and Sibbi districts of Baluchistan, which are quite under-developed as compared to D.G. Khan. Therefore, the consumer goods manufacturing units possess good prospects as they can easily market their products in Loralai and Sibbi districts such as vegetable ghee, fibre glass water tanks, PVC shoes, small size biscuits/confectionery unit, plastic, electric items (plugs, switches, etc.), leather chappals which are commonly used in hilly area.

6.6 LIST OF IDENTIFIED PROJECTS

As per discussion given in Sections 6.1 to 6.5 above, the following projects are identified for investment in the district.

- Agriculture Waste / by products raw material based industries for maximization of value addition chain.
- Activated Fuller Earth
- Agriculture Implements
- Biscuits/Confectionery
- Cement
- Cattle/Poultry Feed Mills
- Cattle/sheep/Goats Fattening Farms

- Chemical Industry
- Energy conservation / efficiency
- Fibre Glass Water Tanks
- Gypsum Processing Unit
- Hosiery
- Hatchery/Breeding Poultry Farm
- Leather Chappals
- Nuts and Bolts
- PVC Shoes
- Plastic Electric Items (Plugs, Switches, etc.)
- Power generation through coal and other alternate fuels
- Power generation through bagasse
- Sewing Machines
- Towels
- Tannery
- Textile (Spinning, Weaving & Processing)
- Tractor Parts (Wheel Mudguards and Weights)
- Vegetable Ghee
- Waste heat recovery systems

Directory of Industrial Establishments, Dera Ghazi Khan

Sr. No.	Name / Address of unit	Phone No. / Website	Industry	Estb. Year	Investment (Th.Rs.)	Emp	Product	Annual Installed Capacity
1	Ahmad Engg. Works Jampur Road Kot Chutta		Agricultural Implements	1991	700	10	Agricultural Implements	84 Nos.
2	Akbar Engg. Works Jampur Road Kot Chutta	2843579	Agricultural Implements	1990	600	8	Agricultural Implements	84 Nos.
3	Allah Baksh Mech. Works Taunsa Rd Pir Adil		Agricultural Implements	1990	980	5	Agricultural Implements	36 Nos.
4	Aslam Mechanical Works Taunsa Road Pir Adil		Agricultural Implements	1990	988	5	Agricultural Implements	48 Nos.
5	Bashir Mechanical Works Taunsa Road Pir Adil		Agricultural Implements	1991	985	5	Agricultural Implements	72 Nos.
6	Ghulam Haider Mechanical Works Taunsa Road Shah Sadar Din		Agricultural Implements	1994	900	5	Agricultural Implements	48 Nos.
7	Insaf Engineering Works Choti Road Kot Chutta		Agricultural Implements	1992	460	8	Agricultural Implements	100 Nos.
8	Mughal Engineering Works D.G.Khan Road Kot Chutta	2843232	Agricultural Implements	1990	850	10	Agricultural Implements	108 Nos.
9	Punjab Engg. Works Pul Dol Jampur Road	2462481	Agricultural Implements	1992	1000	12	Agricultural Implements	60 Nos.

Sr. No.	Name / Address of unit	Phone No. / Website	Industry	Estb. Year	Investment (Th.Rs.)	Emp	Product	Annual Installed Capacity
10	Shahid Mechanical Works Taunsa Road Pir Adil		Agricultural Implements	1994	500	5	Agricultural Implements	72 Nos.
11	Yasin Engg.Works Dg Khan Road Kot Chutta		Agricultural Implements	1992	200	5	Agricultural Implements	88 Nos.
12	Zeshan Mechanical Works Taunsa Road Pir Adil		Agricultural Implements	1991	985	5	Agricultural Implements	36 Nos.
13	New Irfan Agricultural Parts Inds; Rahim Centre, Shahzad Colony	2464866	Auto Parts	2000	6000	13	Auto Filters	55 Th.Nos.
14	Prince Parts & Agri Inds. Block No-17 Jampur Road	2464063 0300-6781431	Auto Parts	1977	7200	22	Auto Filters	200 Th.Nos.
15	Abdul Majeed Carpet Centre Basti Mian Muhammad Kot Mubarak		Carpets	1985	300	15	Carpets	2 Th. Sq.Ft.
16	Abdul Wahid Carpet Centre Churahatta		Carpets	1980	300	15	Carpets	2 Th. Sq.Ft.
17	Abdur Rehman Carpet Centre Bhutta Colony		Carpets	1995	500	20	Carpets	2 Th. Sq.Ft.
18	Allah Ditta Carpet Centre Block Churahatta		Carpets	1985	500	28	Carpets	2 Th. Sq.Ft.
19	Allah Diwaya Carpet Centre Basti Surani		Carpets	1988	300	25	Carpets	2 Th. Sq.Ft.
20	Allah Wasaya Carpet Centre Chah Bakhtu Wali, Pir Adil		Carpets	1986	250	16	Carpets	3 Th. Sq.Ft.

Sr. No.	Name / Address of unit	Phone No. / Website	Industry	Estb. Year	Investment (Th.Rs.)	Emp	Product	Annual Installed Capacity
21	Allah Wasaya Carpet Centre Mouza Basti Yaki		Carpets	1986	300	22	Carpets	2 Th. Sq.Ft.
22	Ashiq Hussain Carpet Centre Basti Pir Adil		Carpets	1988	600	28	Carpets	2 Th. Sq.Ft.
23	Atta Mohammad Carpet Centre Basti Yaki Jhoke Ultra Road		Carpets	1989	300	22	Carpets	2 Th. Sq.Ft.
24	Ghulam Farid Carpet Centre Jhoke Ultra Road, Kot Chutta		Carpets	1989	350	24	Carpets	2 Th. Sq.Ft.
25	Ghulam Nabi Kalu Carpet Centre Basti Mehtam		Carpets	1988	300	35	Carpets	2 Th. Sq.Ft.
26	Ghulam Sarwar Khosa Carpet Centre Circular Road		Carpets	1986	600	30	Carpets	2 Th. Sq.Ft.
27	Ghulam Sarwar Khosa Carpet Centre Norang Shah		Carpets	1986	1050	18	Carpets	2 Th. Sq.Ft.
28	Hafiz Wahid Bux Carpet Centre Near Petrol Pump Kot Chutta		Carpets	1990	500	25	Carpets	2 Th. Sq.Ft.
29	Imam Bux Carpet Centre Basti Yaru		Carpets	1989	1080	20	Carpets	2 Th. Sq.Ft.
30	Jahkar Carpet Centre Jhkhar Imam Shah		Carpets	1984	300	35	Carpets	2 Th. Sq.Ft.
31	Kalu Khan Surani Carpet Centre Basti Surani		Carpets	1985	300	15	Carpets	2 Th. Sq.Ft.

Sr. No.	Name / Address of unit	Phone No. / Website	Industry	Estb. Year	Investment (Th.Rs.)	Emp	Product	Annual Installed Capacity
32	Khalifa Carpet Centre Mohallah Nizam Abad, Taunsa		Carpets	1987	300	15	Carpets	2 Th. Sq.Ft.
33	Master Aziz Carpet Centre Basti Surani		Carpets	1988	300	35	Carpets	2 Th. Sq.Ft.
34	Master Aziz Carpet Factory Block No.C		Carpets	1985	500	50	Carpets	4 Th. Sq.Ft.
35	Muhammad Ramzan Carpet Centre Basti Pir Adil		Carpets	1988	300	15	Carpets	2 Th. Sq.Ft.
36	Muhammad Sharif Multani Carpet Centre Leghari Colony		Carpets	1992	1100	20	Carpets	2 Th. Sq.Ft.
37	Pitafi Carpet Centre Basti Pir Adil		Carpets	1988	300	15	Carpets	2 Th. Sq.Ft.
38	Qazi Carpet Centre Taunsa		Carpets	1988	600	30	Carpets	2 Th. Sq.Ft.
39	Saeed Qureshi Carpet Centre Ghazi Road		Carpets	1980	1000	25	Carpets	2 Th. Sq.Ft.
40	D.G. Khan Cement Co Ltd	064-2470315-16,0333-7648995, 111-113-333 www.dgcement.com	Cement	1982	11714619	586	Cement	6700 M.Tons /Day
41	Asad Cold Storage Multan Road	2467454	Cold Storage	2003	4700	11	Vegetable/ Fruits	55000 Bags/Crates
42	Friends Ice Factory & Cold Storage Taunsa Road	2466060	Cold Storage	1983	5200	10	Vegetable/ Fruits	4000 Bags/Crates

Sr. No.	Name / Address of unit	Phone No. / Website	Industry	Estb. Year	Investment (Th.Rs.)	Emp	Product	Annual Installed Capacity
43	Ghazi Ice & Factory Cold Storage Multan Road		Cold Storage	1960	300	5	Vegetable / Fruits Storage	500 Bags/Crates
44	Gulzar Ice & Cold Storage Near Shahzad Colony	2460705	Cold Storage	1989	4800	5	Vegetable / Fruits Storage	70000 Bags/Crates
45	National Cold Storage Jampur Road Rukanabad Colony	2473353	Cold Storage	1988	4400	5	Vegetable/ Fruits	3000 Bags/Crates
46	New National Cold Storage Muozha Dhar Oppla Multan By Pass Road	0331-7373196	Cold Storage	2009	3500	6	Vegetable/ Fruits	10,000 Bags/Crates
47	Pak Ice Factory & Cold Storage, Multan Bypass Road	064-2004477	Cold Storage	2000	4600	5	Vegetable / Fruits Storage	40000 Bags/Crates
48	Qadria Ice Factory & Cold Storage Ghazi Road Churhatta	2466379	Cold Storage	1982	4500	10	Vegetable / Fruits Storage	10000 Bags/Crates
49	Wadani Cold Storage Taunsa Road		Cold Storage	1983	700	5	Vegetable/ Fruits	500 Bags/Crates
50	Atta Baig Cotton Factory & Oil Industries, Taunsa Road	2680137	Cotton Ginning/ Pressing	2001	8000	30	Cotton Lint/ Seed	4 Sawgins 1 Press 3 Expellers
51	Abdul Qadir Khan Cotton Factory Choti Zareen	2566243	Cotton Ginning/ Pressing	1984	8200	46	Cotton Lint/ Seed	4 Sawgins 1 Press
52	Abdullah Haseeb Cotton & Oil Co (Pvt) Ltd Multan Road	2689166-9	Cotton Ginning/ Pressing	1995	8900	35	Cotton Lint/ Seed	4 Sawgins 1 Press

Sr. No.	Name / Address of unit	Phone No. / Website	Industry	Estb. Year	Investment (Th.Rs.)	Emp	Product	Annual Installed Capacity
53	Al Abbas Cotton Ginning Factory Taunsa Road Shadanlund		Cotton Ginning/ Pressing	2002	8800	C	Cotton Lint/ Seed	4 Sawgins 1 Press
54	Al Abbas Faiz Cotton Industries Khakhi Paigah Road	2465311	Cotton Ginning/ Pressing	1994	8500	48	Cotton Lint/ Seed	4 Sawgins 1 Press
55	Al Farid Cotton Ginning And Oil Mills / Ahmad Hassan Cotton Ginners Multan Road	2689187	Cotton Ginning/ Pressing	1994	9000	31	Cotton Lint/ Seed	4 Sawgins 1 Press
56	Al Hussain Cotton Ginners Jampur Road	2460474	Cotton Ginning/ Pressing	2003	9500	49	Cotton Lint/ Seed	4 Sawgins 1 Press, 6 Expellers
57	Al Manzoor Cotton Industries Jampur Road	2845088	Cotton Ginning/ Pressing	1998	7400	39	Cotton Lint/ Seed	4 Sawgins 1 Press
58	Ali Cotton Industries Jhok Yar Shah	2465383	Cotton Ginning/ Pressing	2003	9200	50	Cotton Lint/ Seed	4 Sawgins 1 Press
59	Allah Bakhsh Cotton Factory Multan Road	2463657	Cotton Ginning/ Pressing	1990	8000	C	Cotton Lint/ Seed	4 Sawgins 1 Press
60	Alyani Cotton Factory Sakhi Sarwar Road	2463362	Cotton Ginning/ Pressing	1997	8000	26	Cotton Lint/ Seed	4 Sawgins 1 Press
61	Aziz Model Industries Jampur Road	2463870	Cotton Ginning/ Pressing	1980	8300	51	Cotton Lint/ Seed	4 Sawgins 1 Press
62	Balouch Cotton Industries Quetta Road	2469588	Cotton Ginning/ Pressing	2000	8500	42	Cotton Lint/ Seed	4 Sawgins 1 Press

Sr. No.	Name / Address of unit	Phone No. / Website	Industry	Estb. Year	Investment (Th.Rs.)	Emp	Product	Annual Installed Capacity
63	Bilal Cotton Factory, Quetta Road	2463747	Cotton Ginning/ Pressing	2003	9000	C	Cotton Lint/ Seed	4 Sawgins 1 Press
64	Buzdar Cotton & Oil Industries Yaroo Road	2464592	Cotton Ginning/ Pressing	1991	7500	C	Cotton Lint/ Seed	4 Sawgins 1 Press
65	Dalana Cotton Factory Chit Sirkani Road	2003453	Cotton Ginning/ Pressing	2002	8000	C	Cotton Lint/ Seed	4 Sawgins 1 Press
66	Din Cotton Factory & Oil Mills, Multan Road, Sarwar Wali		Cotton Ginning/ Pressing	2006	11000	45	Cotton Lint/ Seed	4 Sawgins 1 Press 3 Expellers
67	Farooq Mansoor Cotton Ginning Fty; Jampur Rd, Mana Ahmadani, Taunsa	2344277	Cotton Ginning/ Pressing	2002	8500	32	Cotton Lint/ Seed	4 Sawgins 1 Press
68	Farooq Nasir (Pvt) Ltd Shadan Lound	2680142	Cotton Ginning/ Pressing	2001	7500	28	Cotton Lint/ Seed	4 Sawgins 1 Press
69	Ghazi Agri Services & Ginning Co Choti Zareen	2567222	Cotton Ginning/ Pressing	1986	9000	49	Cotton Lint/ Seed	8 Sawgins 2 Press
70	Ghulam Shabbir Cotton Factory Jampur Road	2462743	Cotton Ginning/ Pressing	1996	8000	42	Cotton Lint/ Seed	4 Sawgins 1 Press
71	Habib Cotton Industries Jampur Road	2845296	Cotton Ginning/ Pressing	1992	7500	34	Cotton Lint/ Seed	4 Sawgins 1 Press
72	Haji Rahim Bux & Sons Cotton Industries Taunsa Road Pir Adil	2462516, 2463441	Cotton Ginning/ Pressing	1991	3800	C	Cotton Lint/ Seed	4 Sawgins 1 Press

Sr. No.	Name / Address of unit	Phone No. / Website	Industry	Estb. Year	Investment (Th.Rs.)	Emp	Product	Annual Installed Capacity
73	Hamza Javaid Cotton Industries (Pvt) Ltd Inayatabad Taunsa		Cotton Ginning/ Pressing	1997	8800	57	Cotton Lint/ Seed	5 Sawgins 1 Press
74	Hotani Cotton Industries Sakhi Sarwar Road	2463016	Cotton Ginning/ Pressing	2004	8000	26	Cotton Lint/ Seed	4 Sawgins 1 Press
75	Hussain Traders (Cotton Factory) Jampur Road	2845292	Cotton Ginning/ Pressing	1993	7500	40	Cotton Lint/ Seed	4 Sawgins 1 Press
76	Imran Yousaf Cotton Factory, Quetta Road	2462202	Cotton Ginning/ Pressing	2005	9500	30	Cotton Lint/ Seed	4 Sawgins 1 Press
77	Indus Cotton Industries Jampur Road Choti Zareen	2566115-6	Cotton Ginning/ Pressing	1996	7500	50	Cotton Lint/ Seed	4 Sawgins 1 Press
78	Kaghma Industries Jampur Road	2466832	Cotton Ginning/ Pressing	1972	9500	46	Cotton Lint/ Seed	4 Sawgins 1 Press
79	Khalifa Industries & Cotton Factory Jampur Road	2471231	Cotton Ginning/ Pressing	1972	8000	47	Cotton Lint/ Seed	4 Sawgins 1 Press
80	Khalil Cotton Industries Quetta Road	2469421	Cotton Ginning/ Pressing	1996	9000	22	Cotton Lint/ Seed	5 Sawgins 1 Press
81	Khosa Cotton Factory/ Saifullah Buzdar Cotton Ginning Mill Taunsa Road Pir Adil	2515254	Cotton Ginning/ Pressing	1998	8500	C	Cotton Lint/ Seed	4 Sawgins 1 Press
82	Khursheed Cotton Industries Jampur Road Aali Wala	2845014	Cotton Ginning/ Pressing	1988	7500	42	Cotton Lint/ Seed	4 Sawgins 1 Press

Sr. No.	Name / Address of unit	Phone No. / Website	Industry	Estb. Year	Investment (Th.Rs.)	Emp	Product	Annual Installed Capacity
83	Kot Adu Cotton Industries (Pvt) Ltd. Tounsa Road Shadan Lound	2680052	Cotton Ginning/ Pressing	1992	9800	53	Cotton Lint/ Seed	5 Sawgins 1 Press
84	Lund Cotton Factory Taunsa Road Shadan Lound		Cotton Ginning/ Pressing	1993	8000	C	Cotton Lint/ Seed	4 Sawgins 1 Press
85	Madina Cotton Factory Taunsa Road Pir Adil		Cotton Ginning/ Pressing	1994	8000	51	Cotton Lint/ Seed	4 Sawgins 1 Press
86	Madina Cotton Industries, Jampur-Dajal Road Adda Qadirabad	2567931	Cotton Ginning/ Pressing	1994	8000	47	Cotton Lint/ Seed	4 Sawgins 1 Press
87	Makka Madina Cotton Factory Shadan Lund	2680144	Cotton Ginning/ Pressing	2002	8900	29	Cotton Lint/ Seed	4 Sawgins 1 Press
88	Maqsood Safdar Cotton & Oil Industries, Quetta Road	2463188	Cotton Ginning/ Pressing	2001	8000	30	Cotton Lint / Seed	4 Sawgins 1 Press 3 Expellers
89	Masha Allah Cotton And Oil Mills, Choti Jampur Road		Cotton Ginning/ Pressing	2006	9500	38	Cotton Lint/ Seed	4 Sawgins 1 Press 3 Expellers
90	Mastoi Cotton Industries, Taunsa Road	2680150	Cotton Ginning/ Pressing	2003	8000	35	Cotton Lint/ Seed	4 Sawgins 1 Press
91	Mohsin Model Industries Jampur Road Aaliwala	2845140	Cotton Ginning/ Pressing	1996	8300	34	Cotton Lint/ Seed	4 Sawgins 1 Press
92	Moon Star Cotton Industries Jampur Road Mana Ahmadani	2345270	Cotton Ginning/ Pressing	1999	7000	C	Cotton Lint/ Seed	5 Sawgins 1 Press

Sr. No.	Name / Address of unit	Phone No. / Website	Industry	Estb. Year	Investment (Th.Rs.)	Emp	Product	Annual Installed Capacity
93	Mushtaq Brothers Cotton Ginning & Pressing Industries Dgkhan Road Taunsa	7965408	Cotton Ginning/ Pressing	1997	8500	49	Cotton Lint/ Seed	4 Sawgins 1 Press
94	Nasuha Cotton Factory, Di Khan Road, Taunsa		Cotton Ginning/ Pressing	2006	10000	35	Cotton Lint/ Seed	4 Sawgins 1 Press
95	National Cotton Factory Mana Ahmadani	2344050	Cotton Ginning/ Pressing	1990	8000	42	Cotton Lint/ Seed	4 Sawgins 1 Press
96	New Amjad Farooq Cotton Industries Jampur Road	2845111, 2845120	Cotton Ginning/ Pressing	1996	8200	41	Cotton Lint/ Seed	4 Sawgins 1 Press
97	New Buzdar Cotton Industries Kot Chutta	2845590	Cotton Ginning/ Pressing	1993	8200	44	Cotton Lint/ Seed	4 Sawgins 1 Press
98	Pakistan Cotton & Oil Industries, Taunsa Road, Ahmadani, Taunsa	2680327	Cotton Ginning/ Pressing	2001	8000	32	Cotton Lint / Seed	4 Sawgins 1 Press 3 Expellers
99	Qadir Brothers Cotton Ginning Industries Choti Zaren	2566254	Cotton Ginning/ Pressing	1986	8500	49	Cotton Lint/ Seed	4 Sawgins 1 Press
100	Rahim Bux & Sons Cotton Factory Taunsa Road Pir Adil		Cotton Ginning/ Pressing	1997	8000	C	Cotton Lint/ Seed	4 Sawgins 1 Press

Sr. No.	Name / Address of unit	Phone No. / Website	Industry	Estb. Year	Investment (Th.Rs.)	Emp	Product	Annual Installed Capacity
101	Rashid Agro Cotton Ginning & Pressing Factory Herro More Taunsa		Cotton Ginning/ Pressing	1997	8500	43	Cotton Lint/ Seed	4 Sawgins 1 Press
102	Rashid Model Industries Jampur Road	2462755	Cotton Ginning/ Pressing	1972	8200	C	Cotton Lint/ Seed	4 Sawgins 1 Press
103	Rauf Cotton Industries & Oil Mills Jampur Road	2469357	Cotton Ginning/ Pressing	1973	8000	40	Cotton Lint/ Seed	4 Sawgins 1 Press
104	Rehmat Industries (Unit No.1) Jampur Road	2463321, 2463922	Cotton Ginning/ Pressing	1973	3500	68	Cotton Lint/ Seed	4 Sawgins 1 Press
105	Rehmat Industries (Unit No.2) Jampur Road	2845323	Cotton Ginning/ Pressing	2003	8000	46	Cotton Lint/ Seed	4 Sawgins 1 Press
106	Riaz Cotton Factory Taunsa Bye Pass Road	2689226	Cotton Ginning/ Pressing	2000	7000	C	Cotton Lint/ Seed	4 Sawgins 1 Press
107	Sadaat Model Industries Chowk Ali Wala Jampur Road	2843552	Cotton Ginning/ Pressing	1990	8000	C	Cotton Lint/ Seed	4 Sawgins 1 Press
108	Sadat Cotton Factory, Taunsa Road	2463782	Cotton Ginning/ Pressing	2003	9000	25	Cotton Lint/ Seed	4 Sawgins 1 Press
109	Sanghar Cotton Industries Jhoke Ranjha Ada Kareem Wala Indus High Way Taunsa Sharif	345714208 5	Cotton Ginning/ Pressing	2009	16500	14	Cotton Lint/ Seed	5 Sawgins 1 Press
110	Sarmad Rafiq Cotton Factory Sakhi Sarwar Road	2471999	Cotton Ginning/ Pressing	2001	7100	33	Cotton Lint/ Seed	4 Sawgins 1 Press

Sr. No.	Name / Address of unit	Phone No. / Website	Industry	Estb. Year	Investment (Th.Rs.)	Emp	Product	Annual Installed Capacity
111	Shah Sarwar Cotton Factory, Basti Malana		Cotton Ginning/ Pressing	1991	4000	40	Cotton Lint/ Seed	4 Sawgins 1 Press
112	Shahzad Cotton Industries Ginning & Pressing Factory Noorwala Jampur Road	2843530	Cotton Ginning/ Pressing	1997	8400	40	Cotton Lint/ Seed	4 Sawgins 1 Press
113	Sher Muhammad Cotton Factory Jampur Road	2471231	Cotton Ginning/ Pressing	1996	9000	C	Cotton Lint/ Seed	4 Sawgins 1 Press
114	Sherri Cotton Factory Nari Janubi Indus High Way Taunsa	0346-73212760	Cotton Ginning/ Pressing	2009	14000	10	Cotton Lint/ Seed	4 Sawgins 1 Press
115	Suban Cotton Factory Taunsa Road Pul Qamber	2680254	Cotton Ginning/ Pressing	1989	7400	C	Cotton Lint/ Seed	4 Sawgins 1 Press
116	Sultan Cotton Industries, Jampur Road		Cotton Ginning/ Pressing	2006	9800	32	Cotton Lint/ Seed	4 Sawgins 1 Press
117	Wali Cotton Industries Jampur Road Kot Chutta	2843136-7	Cotton Ginning/ Pressing	2000	8000	42	Cotton Lint/ Seed	4 Sawgins 1 Press
118	Waseem Cotton Industries Jampur Road Noor Wala	2843111	Cotton Ginning/ Pressing	2000	8000	49	Cotton Lint/ Seed	4 Sawgins 1 Press
119	Zakria Cotton Industries Quetta Road	2462806	Cotton Ginning/ Pressing	1999	6200	35	Cotton Lint/ Seed	4 Sawgins 1 Press
120	Ahmad Faraz Flour Mills Quetta Road	2005122	Flour Mills	1996	8500	22	Flour	100 M.Tons / Day

Sr. No.	Name / Address of unit	Phone No. / Website	Industry	Estb. Year	Investment (Th.Rs.)	Emp	Product	Annual Installed Capacity
121	Al-Hussain Flour Mills, Multan Bye Pass Road	2467658	Flour Mills	2000	13000	15	Flour	120 M.Tons / Day
122	Al-Khaliq Flour Mills Jampur Road	2461793	Flour Mills	2002	11000	16	Flour	120 M.Tons / Day
123	Al-Manzoor Flour Mills, Jampur Road D.G.Khan	0300-6789084	Flour Mills	2008	18000	14	Flour	180 M.Tons / Day
124	Al-Sheikh Flour Mills, Taunsa Road	2003606, 2003706	Flour Mills	2004	10000	12	Flour	160 M.Tons / Day
125	Amjad Farooq Flour Mills Jampur Road	2845555	Flour Mills	2004	10000	10	Flour	160 M.Tons / Day
126	Atta Ullah Flour Mills Jampur Road	2845122	Flour Mills	1979	9500	22	Flour	120 M.Tons / Day
127	Dg Khan Flour Mills Taunsa Road	0333-6134675	Flour Mills	2004	10000	10	Flour	120 M.Tons / Day
128	Khalil Flour Mills, Jampur Road		Flour Mills	2000	10000	10	Flour	120 M.Tons / Day
129	Lakh Data Flour Mills Quetta Road	2464214-2003649	Flour Mills	1996	10000	30	Flour	120 M.Tons / Day
130	Leghari Flour Mills Quetta Road, Pull Dat	2465708	Flour Mills	1993	12000	11	Flour	100 M.Tons / Day
131	Mastoi Flour Mills, D.I Khan Road, Taunsa	2015013	Flour Mills	2005	11500	15	Flour	160 M.Tons / Day
132	Mushtaq Brothers Flour Mills, Chowki Wala, Taunsa	2012326	Flour Mills	2005	12500	12	Flour	160 M.Tons / Day
133	Nasuha Model Flour Mills D.I.Khan Road, Taunsa Sharif	0334-6734705, 0345-8137777	Flour Mills	2008	30000	12	Flour	240 M.Tons / Day

Sr. No.	Name / Address of unit	Phone No. / Website	Industry	Estb. Year	Investment (Th.Rs.)	Emp	Product	Annual Installed Capacity
134	Sultan Flour Mills Jampur Road	0300-6781793	Flour Mills	2004	9500	12	Flour	160 M.Tons / Day
135	Three Star Flour Mills, Quetta Road	2463347-2003247-0307-6666111	Flour Mills	1998	9800	36	Flour	80 M.Tons / Day
136	Umer Usman Flour Mills, Sakhi Sarwar Road	2003648-2462202	Flour Mills	1988	8511	20	Flour	160 M.Tons / Day
137	Wadood Flour Mills (Old Name Sardar Flour Mills Sakhi Sarwar Road D.G.Khan	2463300-2463200	Flour Mills	1988	8800	28	Flour	120 M.Tons / Day
138	Bambino Food Industries (Pvt) Ltd. P.O. Box 1, Jampur Road, Aali Wala	2462233, 2460699	Fruit Juices	1985	50000	C	Fruit Juices	187500 Crates
139	Ghaus Food & Beverages Industries, Taunsa Road	0300-6381183, 0300-8632111	Fruit Juices	1986	50000	30	Fruit Juices	284000 Crates
140	Taunsa Gypsum (Pvt) Ltd; 9Th Km Indus Highway Taunsa Sharif	2302851, 042-6361960, 6664448	Gypsum Industry	1983	16000	6	Gypsum Products	150000 M.Tons
141	Fruity Ice Cream Balakh Sarwar City Jampur Road		Ice Cream	2000	1000	8	Ice Cream	10000 Litres
142	Sanopy Ice Creem Near Goal Bagh		Ice Cream	1998	1000	9	Ice Cream	10000 Litres
143	Eirad Co Ltd Baharwali Taunsa Sharif	522104	Lpg Gas	1994	278270	40	Lpg / Natural Gases	310 M.Tons

Sr. No.	Name / Address of unit	Phone No. / Website	Industry	Estb. Year	Investment (Th.Rs.)	Emp	Product	Annual Installed Capacity
144	Lub Gas (Pvt) Ltd Dhodak Plant Taunsa Sharif	042-6306106	Lpg Gas	1994	35484	32	Lpg / Natural Gases	15000 M.Tons
145	Unigas Cpg Ranjha Enterprises (Pvt) Ltd. Dhodak Taunsa		Lpg Gas	1996	2000	10	Lpg/ Natural Gas Filling	20 M.Tons
146	Wak Gas Co.Ltd. Baharwali Taunsa		Lpg Gas	1996	2000	10	Lpg / Natural Gases	20 M.Tons
147	Abdullah Haseeb Chemicals Multan Road	2471862, 2471962, 689166-9	Pesticides / Insecticides	2002	10000	32	Pesticide Packing	3000 M.Tons
148	Suncrop Pesticides Khayaban-E-Sarwar	061-537302-3, 0642-470991	Pesticides / Insecticides	2001	12500	60	Pesticide Packing	3000 M.Tons
149	Dhodak Gas/Condensate Processing Plant Baharwali Tounsa	522102-4	Petroleum Products	1994	384	429	Associated Gas, Condensate	20000 Mmscf, 1000000 Barrels
150	D.G. Khan Cement Company Ltd. (Power Generation Unit) Mouza Khufli Satai	064-2474202, 111-113-333	Power Generation	1995	525000	35	Electricity	23 Mw
151	Abdullah Rice Mills Taunsa Road		Rice Mills	1998	8000	45	Rice	1 Sheller
152	Akhtar Saeed Rice Factory Jhoke Ultra		Rice Mills	1993	1200	5	Rice	2 Hullers
153	Al Abbas Rice Mills, Pul Kot Haybet	2003629, 2465932	Rice Mills	2005	7000	8	Rice	1 Sheller

Sr. No.	Name / Address of unit	Phone No. / Website	Industry	Estb. Year	Investment (Th.Rs.)	Emp	Product	Annual Installed Capacity
154	Al Makka Rice Mills Yaro Khosa Road Chabbri Bala Sharqi	2846284	Rice Mills	1997	2400	18	Rice	1 Sheller
155	Al Sheikh Rice Mills, Jampur Road	2843652	Rice Mills	2005	6500	6	Rice	1 Sheller
156	Ali Rice Mills Taunsa Road	2465383	Rice Mills	2003	2200	32	Rice	1 Sheller
157	Allah Bakhsh Rice Factory Kot Hebat		Rice Mills	1993	1200	10	Rice	2 Hullers
158	Atta Muhammad Rice Factory Shah Sadar Din		Rice Mills	1993	1200	12	Rice	2 Hullers
159	Bahar Rice Mills Yaro Road Chabri Bala	2846228	Rice Mills	2001	4800	21	Rice	1 Sheller
160	Bashir Rice Factory Shah Sadar Din		Rice Mills	1992	1100	12	Rice	2 Hullers
161	Bismillah Rice Mills Yaroo Khosa Road	2846159	Rice Mills	2001	4800	19	Rice	1 Sheller
162	Buzdar Rice Mills Taunsa Road	2466393	Rice Mills	1991	2500	18	Rice	1 Sheller
163	Ghulam Haider Dasti Rice Mills Basti Shah Sadar Din		Rice Mills	1993	1100	10	Rice	3 Hullers
164	Ghulam Rice Mills Pul Kala		Rice Mills	1994	1200	10	Rice	1 Huller
165	Hafiz Muhammad Bakhsh Rice Mills Taunsa Road		Rice Mills	1993	1150	8	Rice	2 Hullers

Sr. No.	Name / Address of unit	Phone No. / Website	Industry	Estb. Year	Investment (Th.Rs.)	Emp	Product	Annual Installed Capacity
166	Haidry Rice Mills Bye Pass Road Chabbri Bala	646180	Rice Mills	1990	2000	18	Rice	1 Sheller
167	Haji Abdullah Rice Mills Taunsa Road Basti Jaluwala		Rice Mills	1993	1200	5	Rice	2 Hullers
168	Haji Sona Khan Rice Mills 6-Km Taunsa Road		Rice Mills	1993	1150	5	Rice	2 Hullers
169	Hasnain Rice Mills Taunsa Road Saadn Lund D.G Khan		Rice Mills	2008	8000	10	Rice	1 Sheller
170	Hussain Rice Mills, Taunsa Road, Shadan Lund		Rice Mills	2008	7500	4	Rice	1 Sheller
171	Iqbal Brothers Rice Mills Taunsa Road		Rice Mills	1996	1500	C	Rice	1 Huller
172	Kanera Rice Mills, Taunsa Road	2515285	Rice Mills	2007	7500	6	Rice	1 Sheller
173	Khushall Khan Khatak Rice Mills Near Khad Buzdar DI Khan Rd Taunsa Sharif	0345-4865609 0300-5879964	Rice Mills	2009	11200	12	Rice	1 Sheller
174	Lalani Rice Mills C/O Buzdar Rice Mills Chit Cirrani Road	2466260	Rice Mills	2001	4500	18	Rice	1 Sheller
175	Madina Rice Mills Yaro Khosa Road	2846279	Rice Mills	1998	220	19	Rice	1 Sheller
176	Manzoor Rice Mills, Basti Surani Road, Pul Shoria		Rice Mills	2006	6500	5	Rice	1 Huller

Sr. No.	Name / Address of unit	Phone No. / Website	Industry	Estb. Year	Investment (Th.Rs.)	Emp	Product	Annual Installed Capacity
177	Mastoi Rice Mills Mouza Gadai Janubi Chitt Sirkani Road		Rice Mills	1988	800	18	Rice	1 Sheller
178	Mazco Industries Pvt,Ltd 10-Km Indus High Way Taunsa Sharif	0300-8579015 0346-7160064	Rice Mills	2009	12500	15	Rice	1 Shellers
179	Musa Khan Rice Mills, Pull Sheikhani Shah Sader Din		Rice Mills	2008	8000	4	Rice	1 Sheller
180	Nazeer Rice Factory Taunsa Road Shah Sadar Din		Rice Mills	1995	1400	14	Rice	1 Huller
181	New Buzdar Rice Mills Yaro Khosa Road	0320-5676821	Rice Mills	2000	2400	18	Rice	1 Sheller
182	New Punjab Rice Mills Shah Sadar Din	848786	Rice Mills	1998	2300	18	Rice	1 Sheller
183	Pakistan Rice Mills Taunsa Road	515313	Rice Mills	2000	2200	17	Rice	1 Sheller
184	Punjab Rice Mills Shah Sadar Din	2848119	Rice Mills	2003	2500	18	Rice	1 Sheller
185	Sadiq Brothers Rice Mills Chulani Link Road Ada Karim Wala Taunsa	0346-7584595	Rice Mills	2009	11500	14	Rice	1 Sheller
186	Taunsa Rice Mills D.I. Khan Road Taunsa Sharif		Rice Mills	2008	9500	15	Rice	1 Sheller

Sr. No.	Name / Address of unit	Phone No. / Website	Industry	Estb. Year	Investment (Th.Rs.)	Emp	Product	Annual Installed Capacity
187	Yasin Rice Mills Shah Sadar Din	2466329	Rice Mills	1987	2500	19	Rice	1 Sheller
188	Zahoor Khan Khosa Rice Mills Taunsa Road		Rice Mills	1994	1200	6	Rice	2 Hullers
189	Zeshan Rice Mills Taunsa Road	2466393	Rice Mills	1990	2400	18	Rice	1 Sheller
190	Mehmood Soap Factory, Multan Road		Soap & Detergent	1985	1000	6	Bath Soap	500 M.Tons
191	Pak Soap Factory, New Model Town		Soap & Detergent	2000	100	4	Bath Soap	500 M.Tons
192	Al-Hamd Textile Mills Ltd. Khakhi Paigah Rd, Link Jampur Road	2845382-3	Textile Spinning	1983	1967309	1358	Cotton Yarn	116088 Spindles
193	Arain Fibers Ltd Jampur Road	2843294, www.rahimbaksh.com	Textile Spinning	1993	1012242	778	Cotton Yarn	26400 Spindles
194	Arain Mills Ltd Jampur Road	2843395-6, www.rahimbaksh.com	Textile Spinning	1990	675658	570	Cotton Yarn	26160 Spindles
195	Arain Textile Mills Ltd. Jampur Road	0300-8737007, www.rahimbaksh.com	Textile Spinning	1986	447492	641	Cotton Yarn	18240 Spindles
196	Choti Textile Mills Ltd Jampur Road	2462088	Textile Spinning	1988	130000	188	Cotton Yarn	25256 Spindles
197	Rahim Baksh Textile Mills Ltd Sakhi Sarwar Road	2463785, www.rahimbaksh.com	Textile Spinning	1982	292994	439	Cotton Yarn	12480 Spindles
198	Suleman Spinning Mills Ltd Jampur Road	0300-8737026, 111555456	Textile Spinning	1988	427148	650	Cotton Yarn	25440 Spindles

Sr. No.	Name / Address of unit	Phone No. / Website	Industry	Estb. Year	Investment (Th.Rs.)	Emp	Product	Annual Installed Capacity
199	Yahya Textile Mills Ltd Jam Pur Road	2843167-8	Textile Spinning	1990	47500	627	Cotton Yarn	21408 Spindles
200	Al-Ghazi Tractors Ltd Mouza Dagar Chit Sakhi Sarwar Road	2020750-51, 2463159, 2463158, 0346-7317728 www.alghazitractors.com	Tractors	1983	388203	479	Tractors	15000 Nos.
201	Ghousia Ghee Industries (Pvt) Ltd 12 Km Jampur Road	0300-6370561 0345-7274550	Vegetable Ghee And Cooking Oil	1986	30000	48	Vegetable Ghee/Cooking Oil	18000 M.Tons

Source: Directorate of Industries, Punjab

LIST OF CONTACT NUMBERS

Directorate of Industries Punjab

Designation	Contact
Director Industries, Punjab	Tel: +92 (42)-99211520-1 Fax: +92 (42)-99211522 dipunjab@gmail.com
Additional Director Industries	Tel: +92 (42)-99211531 +92 (42)-99212752 Fax: +92 (42)-99212753
Joint Director (Development)	Tel: +92 (42)-99211526
Senior Economist	Tel: +92 (42)-99211533
Staff Economist	Tel: +92 (42)-99211534
Deputy Director (Admin)	Tel: +92 (42)-99211528
Deputy Director (Development)	Tel: +92 (42)-99211528
Deputy Director (Planning)	Tel: +92 (42)-99211530
Assistant Director (Admin)	Tel: +92 (42)-99211529
Assistant Director (Planning)	Tel: +92 (42)-99211530
Assistant Director (Statistics)	Tel: +92 (42)-99211524
Assistant Registrar	Tel: +92 (42)-99211523
Librarian	Tel: +92 (42)-99213010
District Officer (E&IP), DG Khan	Tel: +92 (64)-9260261

Other Relevant Departments

Department	Contact
Secretary, Industries, Commerce & Investment Department, Govt. of the Punjab	Tel: +92 (42) 99210534-5 Fax: +92 (42) 99210536
Chamber of Commerce & Industry DG Khan	Tel: +92 (64) 9260503-4 Fax: +92 (64) 9260507 dgk_cci@yahoo.com
Punjab Board of Investment & Trade (PBIT)	Tel: +92 (42) 99205201 info@pbit.gop.pk
Small & Medium Enterprises Development Authority (SMEDA)	Tel: +92(42)-111-111-456 Fax: +92 (42) 36304926-7 info@smeda.org.pk

Punjab Industrial Estates Development and Management Company (PIEDMC)	Tel: +92 (42) 35297203-6 Fax: +92 (42) 35297207 info@pie.com.pk
Punjab Small Industries Corporation (PSIC)	Tel: +92 (42) 99200453

BIBLIOGRAPHY

- Punjab Development Statistics 2011, Bureau of Statistics, Government of the Punjab
- The Urban Unit, Planning & Development Department, Government of the Punjab.
- Technical Education and Vocational Training Authority
- Chief Inspector of Boilers, Directorate of Industries, Punjab
- Directorate of Agriculture, Crop Reporting Service, Punjab
- Chief Conservator of Forest Planning, Monitoring and Evaluation, Punjab
- Directorate General (Ext), Livestock & Dairy Development Punjab
- Directorate General Mines & Minerals, Punjab
- Punjab Small Industries Corporation
- Punjab Industrial Estates Development and Management Company
- Faisalabad Industrial Estates Development and Management Company
- Industries, Commerce & Investment Department, Government of the Punjab
- District Officers (Enterprise & Investment Promotion) as well as District Administration
- Export Processing Zones Authority
- Board of Investment, Government of Pakistan
- Website of Stat Bank of Pakistan
- Ministry of Commerce, Govt. of Pakistan
- Directory of Industrial Establishments Punjab, Directorate of Industries, Punjab

