

# District Pre-Investment Study - 2012

---

Chiniot



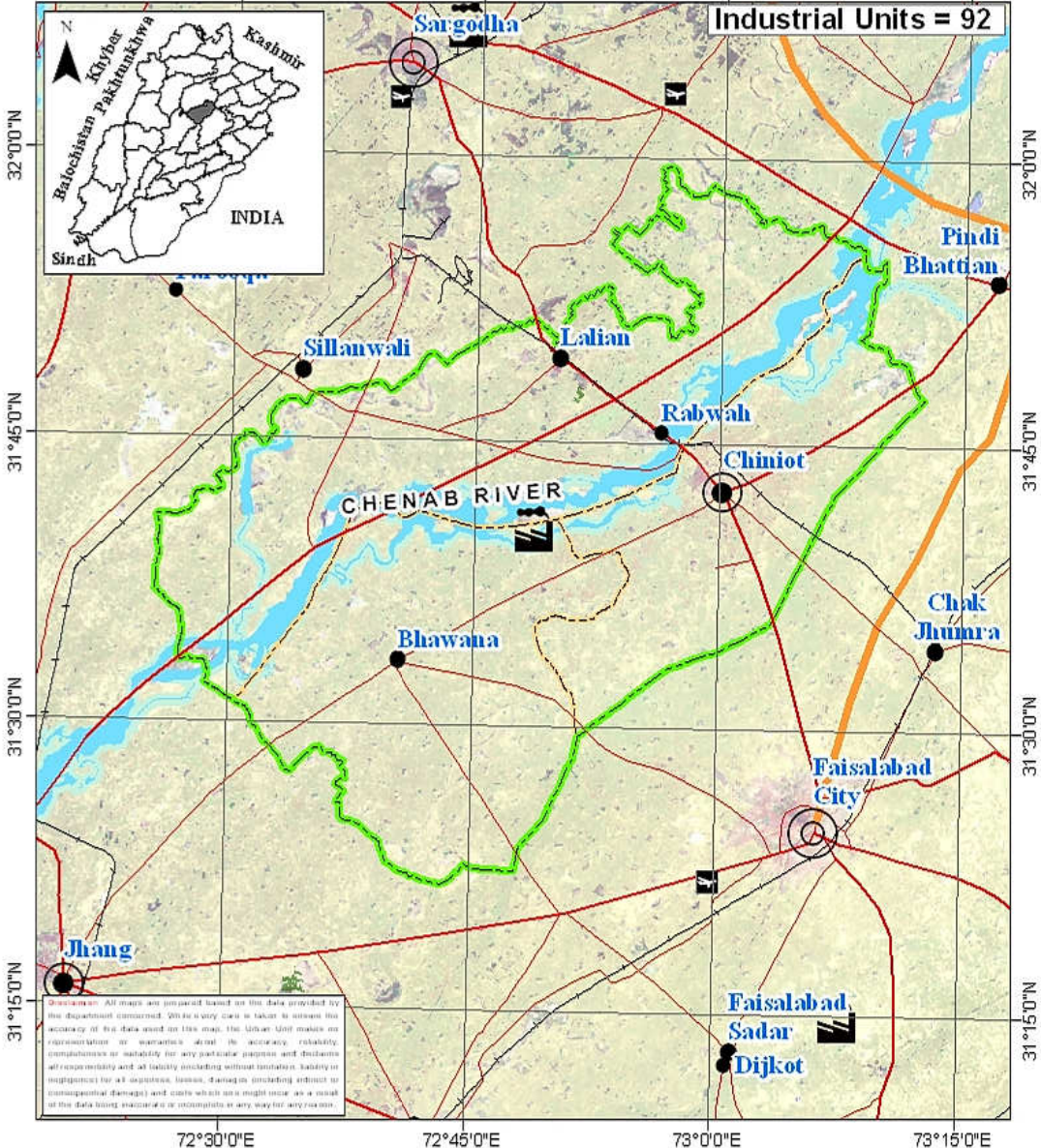
---

Directorate of Industries, Punjab  
Poonch House, Multan Road, Lahore.

# District Chiniot

72°30'0"E      72°45'0"E      73°0'0"E      73°15'0"E

Industrial Units = 92

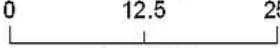


Disclaimer: All maps are prepared based on the data provided by the department concerned. While every care is taken to ensure the accuracy of the data used on this map, the Urban Unit makes no representation or warranties about the accuracy, reliability, completeness or suitability for any particular purpose and disclaims all responsibility and all liability including without limitation, liability or responsibility for all disputes, losses, damages (including indirect or consequential damages) and costs which may arise in any way as a result of the data being inaccurate or incomplete in any way for any reason.

Map No.: CHN-01

Date: 21-01-2013

Scale: 1:1,000,000



Kilometers

## Legend

### Administrative:

- Provincial Boundary
- District Boundary
- Tehsil Boundary
- Divisional Headquarter
- District Headquarter
- Tehsil Headquarter

### Transportation:

- Motorway
- Provincial Highway
- Primary Road
- Intercity Road
- Pakistan Railway
- Airport

### Landuse:

- River
- Agricultural Land
- Forest
- Industrial Estate

## Director's Message

After spending past two years in Directorate of Industries, Punjab, I feel very privileged to be writing this message as Director Industries, Punjab.



This is the time we publish the 7<sup>th</sup> edition of the District Pre-Investment Studies of 36 Districts of Punjab, which has now become synonymous with our commitment to helping Industrialists, new entrepreneurs as well as Researchers. As Director Industries Punjab, I have seen much change, like:

- Relocation plan for the industrial units located within residential areas to industrial estates / positive areas declared by the District Governments.
- Adaptation of Boilers & Pressure Vessels Ordinance 2002.
- Conduct of Census of Manufacturing Industries.
- A scheme "Improvement and Up-gradation of Boilers Inspection Wing" has been approved by the Planning & Development Department, Government of the Punjab with the cost of Rs.10 Million.
- A Scheme "Sports Goods and Material Testing Laboratory" is under process in Planning & Development Department, Government of the Punjab. The estimated cost of the scheme is Rs.450 Million.
- The proposal for Capacity Building of Directorate of Industries Punjab is under process in Industries, Commerce & Investment Department, Government of the Punjab with the estimated cost of Rs.109.75 Million.
- We launch our website [www.doi.pitb.gov.pk](http://www.doi.pitb.gov.pk).

Looking ahead, we are focused on accelerating the execution of growth and promote industrial investment in the province. I am incredibly excited about this and truly believe the best of time for industrial investment is yet to come, Insha Allah.

**(Muhammad Siddique Sheikh)**  
Director Industries, Punjab

## Preface

Pre-investment studies for the districts in the Punjab were first published by the Directorate of Industries and Mineral Development, Punjab in the year 1979, with the prime objective of providing data which might interest private entrepreneurs and the framers of the Provincial and National Strategies in the industrial sector.

The second, third, fourth, fifth and sixth series of Pre-investment Studies for all districts of Punjab were published in 1983, 1992, 2002, 2006 and 2009 respectively. The present edition is seventh in the series.

This study basically updates the information contained in sixth series of district pre-investment studies. Efforts have been made to provide latest information collected through published sources, offices of the respective Government Departments/Agencies and District Offices of Industries Department. Quality addition of Industrial Policy Framework, recently promulgated Special Economic Zone Act 2012, Strategic Trade Policy Framework (2012-15) and Digital Maps by Urban Unit has improved these studies significantly.

The information has been updated in respect of population, manpower, production of agriculture crops, fruits, vegetables, livestock, forest resources, ores/minerals, infrastructural facilities such as technical/vocational training facilities, communication net-work, sub-soil water quality/effluent disposal

facilities, power/gas supply, tele-communication facilities, industrial estates, dry ports, industrial financing facilities, loaning scheme of PSIC, industrial policy, investment policy, fiscal incentives, Special Economic Zone Act 2012 and Strategic Trade Policy Framework (2012-15) etc. New policy measures regarding declaration of negative and specified positive areas have also been incorporated.

The study also includes information regarding existing industrial pattern, industry wise installed capacities and details regarding existing major industrial units in each district.

Effort has been made to identify various industries considering the availability of raw materials, skilled labour, linkage between industrial units and local/national/international demand. The suggested industries are, however, merely of indicative nature and it is advisable that prospective investors should conduct detailed feasibility report before making final decision for investment.

It is worthwhile to mention that industrial sector in Punjab has grown gradually from 6,223 industrial units in 1975 to 17,857 industrial undertakings in 2010. Sectoral growth has also been registered, resulting in substantial value addition. Value addition chain can be maximized by processing the agricultural industrial waste like rice husk, cotton stock, maize and corn cob. Herbal products is another untapped area. Live Stock, Dairy Development and poultry are fast growing sectors. Processing of food products can fetch handsome dividends. Currently information technology sector is growing by 39% annually in Pakistan. Fashion

industry is also developing rapidly. Similarly, chemical sector has lot to offer by utilizing the available mineral resources as raw material.

Issue of energy shortage can be addressed by dealing with power generation as an industry. Local as well as foreign investors have golden opportunity to set up power generation stations based on coal and other alternate fuels, under the captive power plants policy allowed in the newly promulgated SEZ Act, 2012. Punjab offers very good opportunity to the local as well as foreign investors to set up small, medium and heavy industries in variety of sectors. It has a growing market of over 90 million consumers, abundant manpower / labour force and cheap raw material with reasonably controlled law & order.

The Industries, Commerce & Investment Department has sufficient institutional frame work of attached and autonomous bodies to look after the industrial issues. Directorate of Industries, Small Industries Corporation (PSIC), Board of Investment (PBIT), Punjab Industrial Estates Development and Management Company (PIEDMC), Faisalabad Industrial Estates Development and Management Company (FIEDMC) have blend of professionals from the public as well as private sector. These legal entities are working in close coordination with the Chambers of Commerce and Industries systematically to promote industrialization and trade.

Development schemes regarding establishment of Industrial Resource Centre at the Directorate of Industries, setting up Sports & Material Testing Lab at EPZ, Sambrial and Industrial Safety Institute are under consideration with the Planning and Development

Department. Completion of these schemes will definitely help in promotion of industrialization process with enhanced industrial safety.

I must record my appreciation to Mr. Muhammad Akram Awan, Senior Economist, who effectively planned, coordinated and provided the guidance to his team members for completion of this study. Credit also goes to Mr. Muhammad Jamil Chishty, Staff Economist for his dedicated support rendered in the completion process of this study and Mr. Waseem Haider, Stenographer, for his tireless typing and composition work on computer.

I am grateful to all the District Officers, Enterprise & Investment Promotion who provided the relevant information of their respective districts for incorporating in pre-investment studies. I am also thankful to various Provincial Departments for supplying the required data to the Directorate of Industries. My special thanks are due to Dr. Nasir Javed, Project Director, Urban Unit for the provision of digital maps and the Punjab Printing Press.

Any suggestion for the improvement of the study will be welcomed.

Dec. 31, 2012

**(Muhammad Siddique Sheikh)**  
Director Industries, Punjab

# Contents

---

Section	Page
<b>District at a Glance</b>	<b>1</b>
<b>1. Geographical Conditions</b>	<b>3</b>
1.1 Brief Description of the District	3
1.2 Climate and General Soil Conditions	3
<b>2. Man-Power</b>	<b>5</b>
2.1 Total Population of the District	5
2.2 Man-Power Availability	6
2.3 Traditional Crafts	7
2.4 Geographical Indications	7
<b>3. Natural Resources</b>	<b>9</b>
3.1 Agriculture	9
a) Main Crops	9
b) Main Fruits	10
c) Main Vegetables	10
3.2 Forests	11
a) Location of Forests and Area under Afforestation	11
b) Production of Timber and Fire-wood	12
3.3 Livestock Population	12
a) Animal Population	12
b) Poultry Population	12
c) Availability of Hides/Skins & Slaughter House Wastes	13
d) Production of Wool	13
3.4 Ores and Minerals	13
a) Reserves	13
b) Iron Ore Findings	14
c) Industrial Uses of Minerals	16

<b>4. Infrastructural Facilities</b>	<b>17</b>
4.1 Communication Network	17
a) Road Links	17
b) Rail Links	17
4.2 General Quality and Availability of Sub Soil Water	17
4.3 Effluent Disposal Facilities	17
4.4 Power Supply	18
4.5 Natural Gas Availability	18
4.6 Telecommunication Facilities	18
4.7 Social Infrastructural Facilities	18
4.8 Industrial Estates	19
4.9 Dry Port	19
4.10 Industrial Policy	19
4.11 Declaration of Negative Areas	24
4.12 Declaration of Positive Areas	25
4.13 Incentives for Investors to set a unit in EPZs	26
4.14 Pakistan's Investment Policy – Key Features	29
4.15 Industrial Financing Facilities	31
4.16 Salient Features of Loaning Scheme of PSIC	34
4.17 Salient Features of the SEZ Bill 2012	36
4.18 Strategic Trade Policy Frame Work (2012-2015)	37
<b>5. Existing Pattern of Industrial Development</b>	<b>43</b>
5.1 Description of Existing Industry	43
<b>6. Future Industrial Potential</b>	<b>45</b>
6.1 Agriculture	45
6.2 Livestock	46
6.3 Mineral	47
6.4 Industry	47
6.5 Demand Based Industries	48
6.6 List of Identified Projects	48

---

<b>Annex</b>	<b>Page</b>
<b>Directory of Industrial Establishments</b>	<b>51</b>
<b>List of Contact Nos.</b>	<b>61</b>
<b>Bibliography</b>	<b>63</b>

## DISTRICT AT A GLANCE

1	Population (000 Numbers)	:	1,170
2	Area (Square Kilometres)	:	2,643
3	Population Density (per sq. km.)	:	443
4	Tehsils / Towns	:	Chiniot, Bhowana and Lalian
5	Main Crops	:	Sugarcane, Wheat, Rice (cleaned), Maize and Moong
6	Main Fruits	:	Citrus, Guava and Mango.
7	Main Vegetables	:	Potato, Onion, Peas and Garlic.
8	Forest Resources (Area in Acres)	:	1,500
9	Mineral Resources	:	Sandstone, Ordinary Sand and Iron Ore
10	Total Metalled Roads (KM)	:	1,295
11	No. of Grid Stations	:	5
12	No. of Telephone Exchanges	:	17
13	Number of Industrial Units (Large Medium and Some Small Selected Sectors)	:	92

- 
- 14 Type of Industrial Units : Chip/Straw Board, Cold Storage, Electric Goods, Flour Mills, Foundry Products, PVC Pipe, Rice Mills, Textile Spinning, Sugar, Textile Composite and Vegetable Ghee/ Cooking Oil.

## **CHAPTER - I**

### **GEOGRAPHICAL CONDITIONS**

#### **1.1 BRIEF DESCRIPTION OF THE DISTRICT**

District Chiniot is adjoined by Faisalabad district on the South-East, district Hafizabad on the North, district Jhang on the South, district Sargodha on the West.

District Chiniot is spread over an area of 2,643 square kilometres and comprises three tehsils of:

- i) Chiniot
- ii) Bhowana
- iii) Lalian

#### **1.2 CLIMATE AND GENERAL SOIL CONDITIONS**

The climate of the district is hot and dry during summer and cold and dry in winter. The surface of the district presents two distinct levels i.e. low lying river valley in the centre and old Sandal Bar on the extreme east. The river of Chanab makes its way through the district.



## CHAPTER - II

### MAN POWER

#### 2.1 TOTAL POPULATION OF THE DISTRICT

According to Punjab Development Statistics 2011, total population of Chiniot district is 1,170 thousand persons, out of which 610 thousand are males and 560 thousand are females. Density of population in the district is 443 persons per square Kilometre.

Tehsil wise distribution of Urban and Rural population is given in Table-1

**TABLE-1**

#### Town-Wise Distribution of Urban & Rural Population

Town	Population (Thousand Nos.)		
	Urban	Rural	Total
Chiniot	209	260	469
Bhowana	17	303	320
Lalian	88	293	381
<b>Total</b>	<b>314</b>	<b>856</b>	<b>1170</b>

Source: Punjab Development Statistics, 2011

## 2.2 MAN POWER AVAILABILITY

As regards availability of skilled labour, there are 4 technical / commercial / vocational institutions (3 for men and 1 for women) imparting training in various trades e.g. mechanical, electrical, auto-engineering, welding and commerce. Vocational institutions for women impart training in beautician. In all trades about 315 technicians / artisans / workers are trained every year. Details are given in Table-2.

**TABLE - 2**

### Commercial and Technical Institutions

Sr #	Name & Description of Commercial / Technical Training Institutions	Types of Training Courses Offered	Duration of Course	Average No of Students Enrolled / Session
<b>For Men</b>				
1	Govt. Institute of Commerce, Chiniot.	D.Com	24 Months	158
2	Govt. Technical Training Centre (DMTC), Bhawana, Mussa Branch Near National Bank, Thata, Tehsil Chiniot	Short Courses in Electrical, Welding, Turner	6 Months	20

3	Govt. Technical Training Centre (DMTC), Lalian, Thana Road, Tehsil Chiniot	Short Courses in Mechanical, Auto Welding	6 Months	62
<b>For Women</b>				
4	Govt. Vocational Training Institute, Mohallah Raji Wali, Chiniot.	Beautician, Domestic Tailoring, Diploma in Vocational	3 to 24 Months	75

Source: TEVTA

## 2.3 TRADITIONAL CRAFTS

District Chiniot is well known for the woodwork, furniture, ivory and brass inlay work.

## 2.4 GEOGRAPHICAL INDICATIONS

The Project Director (Geographical Indications), Industries, Commerce & Investment Department, Government of the Punjab has identified the following Important Geographical Indications in the district:

- Khussa
- Prandha
- Huqqa



## CHAPTER - III

### NATURAL RESOURCES

#### 3.1 AGRICULTURE

##### a) Main Crops

Sugarcane, Wheat, Rice (cleaned), Moong and Maize are the main crops grown in the district. Production of these crops during the period 2008-09 to 2010-11 is given in Table - 3.

**TABLE-3**

**Production of Main Crops  
(2008-09 to 2010-11)**

Crop	Production (Th. M.Tons)		
	2008-09	2009-10	2010-11
Sugarcane	1795	1962	2454.91
Wheat	410	328	334.88
Rice (cleaned)	66	56	63.65
Maize	139	157	222
Moong	-	1162	870

Source: Directorate of Agriculture, Crop Reporting Service, Punjab

Besides, Cotton, Tobacco, Gram, Jawar, Ground nut, Mash, Masoor, Oil Seed such as Rape/Mustard and Sunflower are also grown in minor quantities in the district.

## b) Main Fruits

Citrus, Mango and Guava are main fruits grown in the district. Production of these fruits during the period 2008-09 to 2010-11 is given in Table - 4

TABLE-4

**Production of Main Fruits  
(2008-09 to 2010-11)**

Fruit	Production (M.Tons)		
	2008-09	2009-10	2010-11
Citrus	14125	18534	18833
Mango	3184	3198	3122
Guava	2679	6142	6929

Source: Directorate of Agriculture, Crop Reporting Service, Punjab

Besides, Date, Pomegranate and Banana are also grown in minor quantity in the district.

## c) Main Vegetables

Potato, Onion, Garlic and Peas are main vegetables grown in the district. Production of these vegetables during the period 2008-09 to 2010-11 is given in Table - 5

**TABLE-5**

**Production of Main Vegetables  
(2008-09 to 2010-11)**

Vegetable	Production (M.Tons)		
	2008-09	2009-10	2010-11
Potato	-	74954	143460
Onion	-	3374	3763
Garlic	-	339	437
Peas	-	1152	9449

Source: Directorate of Agriculture, Crop Reporting Service,  
Punjab

Besides, Brinjal, Tomato, Coriander Bottle Gourd and Chillies are also grown in the district in minor quantities.

### 3.2 FORESTS

#### a) Location of Forests and Area under Afforestation

An area of 1500 Acres is under forest, which is about 0.23 % of the total area of the district. There is also linear plantation of 406 Kilometres alongside the roads/rails/canals in the district. Trees grown in the area are Kau, Phalai, Kikar and Shisham.

**b) Production of Timber and Firewood**

The production of Timber and Fire-Wood in the district during the period 2008-09 to 2010-2011 is not mentionable.

**3.3 LIVESTOCK POPULATION****a) Animal Population**

The animal population of the district is given in Table - 6.

**TABLE - 6****ANIMAL POPULATION**

<b>Animals</b>	<b>Population (Th Heads)</b>
Buffaloes	274
Goats	102
Cattle	196
Sheep	49

Source: Livestock & Dairy Development Department.

**b) Poultry Population**

As per Punjab Development Statistics, 2011, there are 94 broiler and 48 layer poultry and one breeder farm in the district, having rearing capacity of 4445, 244 and 100 thousand birds respectively.

c) Availability of Hides / Skins and Slaughter House Wastes

As per Punjab Development Statistics, 2011, 88400 animals were slaughtered in recognized / un-recognized slaughter houses in the district during the year 2009-10, which is a fair estimate of the availability of hides and skins in the district.

The availability of slaughter house by - products is estimated as under:-

Blood	32.09 M.Tons
Bones	141.79 M.Tons
Tallow	27.67 M.Tons

d) Production of Wool

The sheep population of 49 thousand heads in the district is expected to yield about 49 M.Tons of coarse wool annually.

### 3.4 ORES AND MINERALS

a) Reserves

Chiniot has very rich reserves of mineral resources minerals like sand stone, ordinary sand are explored in the district. Iron Ore was discovered in Chiniot in last decade. Estimated resources of iron ore are 109.83 million tons.

## b) Iron Ore Findings

Iron Ore Deposit and Composition	<ul style="list-style-type: none"> <li>• Concealed iron ore body of limited aerial extension with steeply dipping ore beds under 71-178 meter thick alluvial cover contains low-high grade ore 30, 85% Fe<sub>2</sub>O<sub>3</sub> with variable contents of SiO<sub>2</sub> and Al<sub>2</sub>O<sub>3</sub> and hematite, magnetite ;and goethite as principal minerals.</li> </ul>
Ore Body Dimension	<ul style="list-style-type: none"> <li>• 700 x 200 SQ. meters</li> </ul>
Mineralized Zones	<ul style="list-style-type: none"> <li>• Hematite Zone</li> <li>• Magnetite Zone</li> <li>• Magnetite Sulphide Zone</li> </ul>
Nature and Origin of Mineralization	<ul style="list-style-type: none"> <li>• Massive or Disseminated/Lean</li> <li>• Hydrothermal Origin.</li> </ul>
Type of Overburden	<ul style="list-style-type: none"> <li>• Alluvium i. Sand, clay, gravel, rock fragments</li> <li>• Basement rocks i.e.Andesitic and Rhyolitic Tuff</li> </ul>
Grade Wise Reserves	<ul style="list-style-type: none"> <li>• Smelting grade (&gt;85% Fe<sub>2</sub>O<sub>3</sub>) - 11.513 mt</li> <li>• High grade (&gt;70% to 85% Fe<sub>2</sub>O<sub>3</sub>)- 07.885 mt.</li> <li>• Med. grade (50% to 70% Fe<sub>2</sub>O<sub>3</sub>) - 33..56 mt.</li> <li>• Low grade (30% to 50% Fe<sub>2</sub>O<sub>3</sub>) - 57.376 mt.</li> </ul>
Mining Status	<ul style="list-style-type: none"> <li>• Suitable for underground mining subject to feasibility study.</li> </ul>
Mine Size Proposed)	<ul style="list-style-type: none"> <li>• 1.8 million Tones annual capacity.</li> </ul>
Beneficiation	<ul style="list-style-type: none"> <li>• Low-med and High grade ores are amendable to up-gradation using floatation and magnetic separation techniques, subject to pilot plant</li> </ul>

	study.
Possible Utilization	<ul style="list-style-type: none"> <li>• Smelting/High grade ore (0.4 mt.) can be fed to Pak Steel Mill for smelting.</li> <li>• High grade ore (0.1 mt.) can be fed to Pak Steel Mill after blending of 20% smelting grade ore.</li> <li>• Low-med grade ore (1.3 mt.) after beneficiation can be used in DRI-EAF based steel plant at site.</li> </ul>
Mine Site	<ul style="list-style-type: none"> <li>• Plain area, located nearby Chiniot city, well connected with major cities through rail and roads.</li> </ul>
Infrastructure	<ul style="list-style-type: none"> <li>• Natural/sweet water source is available.</li> <li>• River Chenab passes nearby.</li> <li>• 132 KV grid station nearby.</li> <li>• Natural Gas main pipe line passes nearby.</li> <li>• Other raw materials available within distance of 100kms.</li> </ul>

**Source:** Punjmin

### ***Iron Ore Deposit***

The deposit was discovered by Punjmin during exploration phase of Chiniot Iron Ore deposit in 1999, as twin ore body near Rajoa village, located about 5 km south of Chiniot Iron Ore Deposit.

The recurrence of iron ore deposit near Rajoa has geological significance and could be a potential source of iron ore and can facilitate establishing of iron and steel plant in Chiniot, provided the deposit is explored/evaluated in detailed and

proved with sufficient resources of acceptable grade.

### ***Location***

Deposit is located near Chak No.468 village Rajoa, 5 kilometer south of Chiniot City on Chiniot Faisalabad Road.

### ***Exploration Work / Findings***

#### ***Geophysical Survey***

- Gravity Survey
- Resistivity Survey
- Seismic Survey

#### ***Borehole Drilling***

PR-01	=	291 meters
PR-02	=	209 meters
PR-02A	=	488 meters
PR-03	=	348 meters

Resource potential of Iron Ore has been estimated as 500 million tones, subject to detailed pre-feasibility study.

#### **c) Industrial uses of Minerals**

The industrial uses of major minerals are given hereunder:-

Sand Stone	=	Construction Industry
Ordinary	=	Construction Industry

Sand

Iron Ore = Raw Material for Steel Mills

## **CHAPTER - IV**

### **INFRASTRUCTURAL FACILITIES**

#### **4.1 COMMUNICATION NETWORK**

##### **a) Road Links**

The district has a total metalled road-length of 1295 Kilometres. District Chiniot is linked with Faisalabad, Jhang, Sargodha and Hafizabad districts through metalled roads.

##### **b) Rail Links**

Chiniot is linked with Sargodha and Faisalabad through railway network.

#### **4.2 GENERAL QUALITY AND AVAILABILITY OF SUB-SOIL WATER**

Under ground water resources are adequate in the district. The sub soil water is generally suitable for industrial purposes.

#### **4.3 EFFLUENT DISPOSAL FACILITIES**

Nullahs in the district are suitable for effluent disposal. However, permission from Irrigation and

Power Department, Government of the Punjab is necessary for discharge of effluent in the nullahs/drains.

#### **4.4 POWER SUPPLY**

There are 05 grid stations in the district (ranging in capacity from 66 KV to 132 KV).

#### **4.5 NATURAL GAS AVAILABILITY**

Natural gas is available in Tehsil Chiniot and Tehsil Lalian.

#### **4.6 TELE-COMMUNICATION FACILITIES**

There are 17 telephone exchanges operating in the district (ranging in capacity from 206 lines to 7992 lines). Cellular phone services are also available in the district.

#### **4.7 SOCIAL INFRA-STRUCTURAL FACILITIES**

Social infra-structural facilities available in the district are given in Table - 7.

TABLE - 7

**SOCIAL INFRA-STRUCTURAL FACILITIES**

Tehsil	Primary / Middle / high / higher secondary School	College	Hospital	Police station	Railway stations	Post office	Banks
Chiniot	292	2	2	3	1	5	13
Bhowana	318	4	-	2	-	1	11
Lalian	327	3	1	4	2	3	11
Total:	937	9	3	9	3	9	35

Source: Punjab Development Statistics 2011 / Respective District Offices.

**4.8 INDUSTRIAL ESTATE**

At present there is no industrial estate in the district.

**4.9 DRY PORT**

There is no dry port in the district.

**4.10 INDUSTRIAL POLICY**

- Foreign investors are permitted to hold 100% of the equity of industrial projects without any permission of the Government.
- No prior Government sanction is required for establishment of an industry outside Ex-Municipal Territorial Limits of Town

Committees / Municipal Corporation irrespective of its cost and size except the following covered under schedule 'C':-

- a. Arms & Ammunition.
  - b. Security Printing Currency & Mint.
  - c. High Explosives.
  - d. Radio Active Substances.
  - e. Alcoholic Beverages or Liquors.
1. No industrial unit mentioned in Schedule-A of the notification No. AEA-III-4-3-9/91, dated 30.09.2002 or industrial unit exceeding a total cost of Rs. 100.00 million shall be set up within 10 miles (16 Kms) of international border:

**List of Manufacturing Industries**

- a) Basic Metal Industry.
- b) Petro-Chemical Industries (Excluding Products Industries).
- c) Large size Machine Tool Factories (Limit of Investment to be determined).
- d) Heavy Foundry Works.
- e) Heavy Electric Complexes.
- f) Heavy Mechanical Complexes.
- g) Electronics Industries.
- h) Major Vehicle Assembly Plants.
- i) Ordnance Factories.
- j) Explosives, Nitric acid and Sulphuric acid plants.
- k) Vehicular Tires and Tubes Industries.

- l) Locomotives and Railway Carriage manufacturing plants.
  - m) Government Mint.
  - n) Security Printing Press involved in whole time printing of sensitive documents / currency notes.
  - o) Manufacture of optical glass and optics.
  - p) Nickle cadmium battery industries.
  - q) Nuclear / Separation Plants.
  - r) Large Power Generating Stations.
  - s) Large oil Storage units.
  - t) Oil refineries.
2. No industrial unit shall be set up in areas affected by flood flowing transversely in the strip of one mile of either side across the Grand Trunk Road from Shahdara Town to Muridke Town, without prior permission of the Provincial Government.
3. According to the notification No. AEA-III-3-5/2003 (Vol-III), dated 06.12.2006, “no new sugar mill shall be setup and no enlargement in capacity of the existing sugar mills is allowed in the Province”.
4. Each district Government may declare “negative area” for industry. Such “negative area” be determined by a District Committee after consultation with all stake-holders in light of general policy guidelines issued by the Industries, Commerce & Investment

Department and exemptions allowed under Schedule 'B' of this Notification as under:

**List of Service Industries**

- a) Furniture (excluding Band Saw) and also excluding storing Timber / Wood.
- b) Tailoring/ Readymade garments.
- c) Laundry / Dry Cleaning.
- d) Bakery (excluding confectionery).
- e) Syrups ( excluding squashes)
- f) Cosmetics.
- g) Service workshop.
- h) Cereal Products like vermicilles.
- i) Candles making.
- j) Printing and Packaging.
- k) Hand loom carpet weaving.
- l) Hotels.
- m) Bidi manufacturing.
- n) Handmade shoes / shoe repairing workshop.
- o) Spooling and thread balls.
- p) Small Hosiery units employing not more than 10 workers.
- q) Atta Chakkies.
- r) Installation of Chaff cutters.
- s) Cotton Grading.
- t) Other small industrial undertakings which do not fall under the Sixth schedule of the Punjab Local Government Ordinance, 2001.

“Other small industrial undertakings” would mean an industrial undertaking in which the total fixed assets (including the cost of land)

do not exceed Rs.1.0 million (Rupees one million).

5. No industrial unit mentioned in Schedule 'C' of this Notification shall be set up anywhere in the Punjab without prior approval of the Government.
6. The Government reserves the right to refuse establishment / enhancement of any industrial undertaking which is in contravention of the public interest, ecology or any other law / rules for the time being in force.
7. The Government may relax any of the provisions of this notification in case of a particular unit or industry or class of units or industries.
8. NOC from Environment Protection Department, Govt. of the Punjab is required for setting up new Industries.
  - Tourism has been given the status of industry in accordance with Ministry of Industries & Production Circular No. 1-129/99-INV-IV dated 2<sup>nd</sup> August 1999.
  - The Housing and Construction Sector has also been declared as industry (Finance Division Notification No. 10(10)/IF-11/98, dated 07.04.1999 and 04.06.1999.

- In accordance with Government notification No. 3(2)/97-INV-IV dated 05.05.1997, Computer Software and Information Technology (IT) have been declared as Industry.

#### **4.11 DECLARATION OF NEGATIVE AREAS**

In pursuance of the Clause 4 of the Location Policy notified on 30-09-2002, by the Industries, Commerce & Investment Department, Government of the Punjab, the District Govt. Chiniot has declared the following negative areas:-

- a) Limits of the defunct Municipal Committees/Town Committees, Chiniot except Industrial Estate/Export processing Zones already approved by the competent Authority in this behalf.
- b) Within 220 feet from centre along either side of the major roads/Highways.
- c) Medium Industrial units with total investment of one Million mentioned in the schedule "B" of the Location Policy shall be allowed to be developed except with the manufacturing at Sr.No.13 Further Atta Chakies at Sr.No.17 of schedule "B" shall be operated on electric power only.
- d) Flood affected areas transversally within 1 Km on either side of the road.

- e) All areas specifically prohibited vide Notification / Laws of the LG&CD, Environment Protection and Highway Departments.
- f) All other clauses of the industrial location policy notified by the Industrial Department vide Notification No.AEA-III-3-9/91 dated 30.9.2002, shall remain applicable.

#### **4.12 DECLARATION OF SPECIFIED POSITIVE AREAS**

Vide the Finance Act, 2008, the Government of Pakistan has enacted a new section “23A” in the Income Tax Ordinance 2001. The Section “23A” is reproduced below:-

“First year allowance.- (1) Plant, Machinery and equipment installed by any industrial undertaking setup in specified rural and under developed areas, and owned and managed by a company shall be allowed first year allowance in lieu of initial allowance under Section 23 at the rate specified in Part II of the third schedule against the cost of the “eligible depreciable assets” put to use after July 1<sup>st</sup>,2008.

(2) The provision of Section 23 except sub-sections (1) and (2), thereof, shall mutatis mutandis apply.

The Federal Government may notify “Specified areas” for the purpose of sub-section(1)”

In pursuance of the above mentioned notification District Government Chiniot has identified and approved the following specified positive areas for setting up industrial undertakings:-

All areas which fall outside the limits of defunct municipal / town committees limits except flood affected areas transversally within 1 Km on either side of road and residential locality as positive areas for the incentive as allowed under Section 23(a) in the Income Tax Ordinance 2001

#### **4.13 INCENTIVES FOR INVESTORS TO SETUP A UNIT IN EPZs**

- a) According to EPZs Authorities, following incentives are available in the Export Processing Zones
1. 100% ownership rights.
  2. 100% repatriation of capital & profits.
  3. No minimum or maximum limit for investment.
  4. Duty free imports of machinery, equipment & material.

5. No sales tax on input goods including electricity & gas bills.
6. Obsolete/old machinery can be sold in domestic market of Pakistan after payment of applicable duties & taxes.
7. Freedom from national import restrictions.
8. Foreign exchange control regulation of Pakistan not applicable.
9. Defective goods/waste can be sold in domestic market after payment of applicable duties, maximum upto 3% of total value of export.
10. Duty free vehicle allowed under certain conditions. After 5 years of use, vehicles can be disposed off in domestic market on payment of duty on depreciated value.
11. Domestic market of Pakistan available on same conditions as for imports from other countries.
12. Units operating in EPZs can undertake sub-contracting for units of tariff area subject to payment of duty and taxes on value addition only.
13. Only EPZA is authorized to collect Presumptive tax at the time of export of goods which would be final tax liability.
14. EPZ units allowed to supply goods to Custom manufacturing bonds.
15. Production oriented labour laws to be solely regulated by the Authority.

16. EPZ manufacturer will be treated at par with bonded manufacturers in tariff area for any future incentives to be announced for exporters.
  17. Relief from double taxation subject to bilateral agreement.
- b) Facilities to Investors for setting up a unit in EPZs of Pakistan.
1. One window service and simplified procedure.
  2. All infrastructural facilities like water, electricity, gas, telex, fax and telecommunication system are made available by EPZA.
  3. Skilled & un-skilled labour available in abundance.
  4. Sub-contracting without limit on variety and quantity is allowed outside the zone as well as within the zone.
  5. The garment manufacturing units located in Export Processing Zones are eligible to participate in auction of quotas.
  6. GSP concessions given by various countries to imports from Pakistan are available to the manufacturers in the zone.
  7. Peaceful, secure and environmentally protected / pollution free work area.
  8. Inter-unit transfer of finished goods among exporting units allowed.

#### 4.14 PAKISTAN'S INVESTMENT POLICY - KEY FEATURES

##### *General*

- The investment policy is liberal and business friendly as it has been designed in consultation with businessmen, investors and representative forums as well as the Multinational Companies (MNCs).
- It provides equal investment opportunities for both domestic and foreign investors.
- All economic sectors open for FDI (Foreign Direct Investment).
- 100% foreign equity allowed.
- No government sanction required.
- Foreign investment on repatriable basis is allowed in all economic sector including manufacturing, agriculture, services, infrastructure and social sectors.
- Foreign investment in Agriculture projects allowed on joint-venture basis by associating minimum local equity of 40%.
- Remittance of Royalty, Technical & Franchise Fee, Capital, Profits, Dividends allowed.
- Minimum foreign equity for non-manufacturing including services sector has been reduced from \$ 0.3 to \$ 0.15 million. In Agriculture, infrastructure and social sectors, it is \$ 0.3 million.

### ***Tariff and Tax Incentives***

- To keep Pakistan competitive in international tariff 5% customs duty has been allowed on import of plant and machinery which is not manufactured locally.
- Sales tax 0% across the board.
- 0% duty on import of raw material for export industry.
- 0% duty on import of agriculture machinery.
- Tax relief in shape of Initial Depreciation Allowance (IDA) has been provided as 50% of machinery cost across the board.
- Tax relief has also been provided for expansion and Balancing, Modernization & Replacement (BMR) in existing industries.

### ***Policy Package of Pakistan***

Policy Parameters	Mfg. Sector	Non-Manufacturing Sectors		
		Agriculture	Infrastructure & Social	Services including IT & Telecom Services
Govt. Permission	Not required except for specified industries*	Not required except specific licences from concerned agencies.		
Remittance of capital, profits, dividends, etc.	Allowed	Allowed		
Upper Limit of foreign equity allowed	100%	100%	100%	100%

Minimum Investment Amount (M \$)	No	0.3	0.3	0.15
Customs duty on import of PME**	5%	0%	5%	0-5%
Tax relief (IDA***, % of PME cost)	50%	50%		
Royalty & Technical Fee	No restriction for payment of royalty & technical fee.	Initial lump-sum up to \$100,000 Max Rate 5% of net sales - Initial period 5 years		

\* Specified Industries:

- i) Arms and ammunitions
- ii) High Explosives
- iii) Radioactive substances
- iv) Security Printing
- v) Currency and mint

\*\* PME = Plant, Machinery and Equipment

\*\*\* IDA = Initial Depreciation Allowance

#### 4.15 INDUSTRIAL FINANCING FACILITIES

Following Financial Institutions in the country are providing various types of fixed investment industrial financing in the foreign and local currency to the industrial sector for establishment of new industrial units as well as for Expansion, Balancing, Modernization and Replacement (BMR)

of existing industrial units within the frame-work of industrial/financial policies of the Government of Pakistan.

- 1 AlBaraka Bank (Pakistan) Limited.
- 2 Allied Bank Limited.
- 3 Askari Bank Limited.
- 4 Bank Alfalah Limited.
- 5 Bank Al-Habib Limited.
- 6 Bank Islami Pakistan Limited.
- 7 Barclays Bank PLC.
- 8 Burj Bank Limited.
- 9 Citi Bank N.A.
- 10 Deutsche Bank A.G.
- 11 Dubai Islamic Bank Pakistan Limited.
- 12 Faysal Bank Limited.
- 13 First Women Bank Limited.
- 14 Habib Bank Limited.
- 15 Habib Metropolitan Bank Limited.
- 16 HSBC Bank Middle East Limited.
- 17 Industrial and Commercial Bank of China
- 18 Industrial Development Bank of Pakistan.
- 19 JS Bank Limited.
- 20 KASB Bank Limited.
- 21 MCB Bank Limited.
- 22 Meezan Bank Limited.
- 23 National Bank of Pakistan.

- 24 NIB Bank Limited.
- 25 Oman International Bank S.A.O.G.
- 26 S.M.E. Bank Limited.
- 27 Samba Bank Limited
- 28 Silk Bank Limited.
- 29 Sindh Bank Limited.
- 30 Soneri Bank Limited.
- 31 Standard Chartered Bank (Pakistan) Limited.
- 32 Summit Bank Limited
- 33 The Bank of Khyber
- 34 The Bank of Punjab
- 35 The Bank of Tokyo-Mitsubishi Limited.
- 36 The Punjab Provincial Cooperative Bank Limited.
- 37 United Bank Limited.
- 38 Zarai Taraqati Bank Limited.

---

Source: State Bank of Pakistan

***List of Development Financial Institutions (DFIs)***

- 1 Bankers Equity Limited.
- 2 House Building Finance Company Limited.
- 3 Pak Brunei Investment Company Limited
- 4 Pak-China Investment Company Limited.
- 5 Pak Oman Investment Company Limited.
- 6 PAIR Investment Company Limited.

- 7 Pakistan Kuwait Investment Company Limited.
- 8 Pak-Libya Holding Company Limited.
- 9 Saudi Pak Industrial & Agricultural Investment Company Limited.

---

**Source:** State Bank of Pakistan

Besides the financial institutions mentioned above a number of Leasing Companies, Modaraba Companies, Investment Banks are also providing financing facilities to the industrial sector. Punjab Small Industries Corporation also extends financial assistance to the small/cottage industrial units.

#### **4.16 SALIENT FEATURES OF LOANING SCHEME OF PSIC**

Punjab Small Industries Corporation (PSIC) is a body corporate enacted in 1973. One of core functions of PSIC is financial assistance programme for prospective entrepreneurs, skilled youth, artisans and craftsmen all over the Punjab. The priority sectors are as under:

- Service Industries.
- Agro / Agro Support Industries.
- Food Processing Industries.
- Export Oriented Industries.
- Import Substitution Industries.
- Information Technology (IT) Project.
- Handicraft Industry.
- Women Enterprises.

PSIC started credit assistance programme during 1984 and completed 13 schemes up till now. An amount of Rs. 4079 Million has been disbursed to 19,580 entrepreneurs in 36 Districts of Punjab with the recovery rate of 88% that indicates proper utilization of loans.

The maximum loan limit is Rs.3 Million with debit equity ratio of 60:40. The credit assistance facility available for new projects, BMR and Working Capital. The markup rate varies from 0% to 12%. The repayment period of loan is from 3 years to 6 years with grace period of 3 months to 6 months.

Recently, Government of Punjab has provided an amount of Rs. 2000 Million for disbursement through Service Provider Organization i.e. M/s Akhuwat to un-employed and skilled persons of PVTC, TEVTA, SANATZAR's of Social Welfare Department or other unemployed youth having good business plan.

Up till now, M/s Akhuwat has disbursed an amount of Rs. 1650.00 Million to 94,960 poor household in 33 vocations with average loan size of Rs. 17,382 in Punjab through its 142 offices in 30 districts of the Punjab.

To promote the traditional handicrafts in Punjab, PSIC has also launched dedicated credit assistance schemes for the craftsmen at subsidized markup

rates. These craftsmen have also been provided marketing facilities through Pakistan Handicrafts Shops.

#### **4.17 SALIENT FEATURES OF THE SEZ BILL 2012**

The Law of SEZ has been made to meet the global challenges of competitiveness to attract FDI. The Law/bill will allow to create industrial clusters with liberal incentives, infrastructure, investor facilitation services to enhance productivity and reduce cost of doing business for economic development and poverty reduction. The Law further envisages to reduce processes through SEZ in Pakistan. The establishment of SEZs will attract both domestic as well as international investors. The SEZ would play a pivotal role in the economic development of Pakistan as has been witnessed in case of China, Malaysia, Thailand and other states.

It extends to the whole of Pakistan and overrides other laws (anything contrary);

- All SEZ whether Public, Public-Private or Private-Private to be governed under this Act;
- The Board of Approval (BOA) headed by the Prime Minister of Pakistan with the Minister for Finance as the Vice Chairman shall meet as frequently as required but not less than twice a year and decisions shall be taken by a

majority of the total membership present and voting;

- SEZs will have exemption from customs duties & taxes for all Capital Goods imported into Pakistan for the development , operations and maintenance of a SEZ;
- Exemption from all taxes on income accruable in relation to the development and operations of the SEZ for a period of ten years, starting from the date of signing of the Development Agreement.
- Zone Enterprises have exemption from custom duties etc. on imports of Capital Goods;
- Exemption from taxes on income for a period of 10 years starting from the date the Development certifies that the Zone Enterprise has commenced commercial operations in the relevant SEZ;

There is no limit to the economic potential of Pakistan. The challenge is to create the enabling environment in which this can be realized. Special Economic zones bill is a step towards the economic stability in the country.

#### **4.18 STRATEGIC TRADE POLICY FRAME WORK (2012-2015)**

The government unveiled on 29 January, 2013 a medium term (2012-2015) Strategic Trade Policy Framework, setting a cumulative export target of \$95 billion for three years. The framework, the

second announced by the federal government will be implemented with a funding of Rs. 26.14 billion. In the first year, Rs.5 billion will be spent on providing subsidies and support to identified sectors.

The focus of the policy is on promoting regional trade and regulatory efficiency, promoting agro-processed exports, increasing exports from less developed regions, revamping export promotion agencies, increasing green exports, enhancing role of women in exports and pursuing product and market development and diversification.

The salient features of the policy include institutional interventions, export development initiatives and regulatory amendments. The policy, offers cash assistance to 14 sectors along with 19 regulatory frameworks, including ban on products as a protective measure against environmental and health hazards. The new framework is designed to provide assistance only to the non-textile sectors.

***Institutional Measures:*** The government will setup institutions like an Export-Import (Exim) Bank, Pakistan Land Port Authority; Leather Export Promotion Council and a Services Trade Development Council.

***Export Development:*** Major initiatives in the Policy included allowing mark-up rate support of

two per cent on prevailing LTFF for future import and purchase of machinery. An allocation of Rs.500 million has been proposed for schemes to be implemented this year. The total amount to be spent in three years is projected at Rs.3 billion. A mark-up support of 1.5% will be provided on export finance scheme (EFS) to selected sectors at a cost of Rs. 1.25 billion, including Rs. 200 million in 2012-2013.

The sectors for EFS support are fish and fish preparations, fruit and vegetables, spices, meat and meat preparations, carpets and rugs, sports goods, footwear, leather products, surgical goods, cutlery, onyx products, pharmaceuticals, electric fans, transport equipment, electrical machinery, specialized machinery, furniture, handicrafts and computer-related services.

An amount of Rs.14 billion will be given as adhoc relief at three per cent of FoB to offset the impact of higher cost of utilities for exporters in selected sectors. The measure will cost Rs.3bn this year. An amount of Rs.2 billion-Rs125 million will be allocated for marketing development assistance for regional countries.

A Rs. 25 million allocation has been proposed for export promotion campaigns for agro-processed products; Rs. 400 million for encouraging opening of retail outlets; and Rs.400m for subsidizing 50% cost of plant and machinery for establishing

processing plants for meat, fruits, vegetables, dates and olives in Azad Jammu and Kashmir, Baluchistan, Gilgit - Baltistan and Khyber Pakhtunkhwa.

An amount of Rs.30 million will be allocated for upgrading rice inspection laboratories, Rs. 20 million for subsidy at 100% of the prevailing mark-up rate for establishing mining and processing units in Khyber Pakhtunkhwa and Baluchistan.

Another Rs.20 million has been allocated for strengthening women's chamber of commerce and industry, Rs.32 million for setting up a resource management cell at the ministry of commerce, Rs.28 million for establishing leather export promotion council and Rs.70 million for services export development council.

### ***Regulatory Measures***

Unrestricted import of used motorized wheelchairs and five-year-old used or second-hand ambulances has been allowed. Two per cent of export proceeds will be allowed to manufacturers-cum-exporters for duty-free import of accessories for value-addition for leather garments and made-ups. Import of non-hazardous plastic scrap has been allowed for industrial consumers for use as raw material. A ban has been imposed on import of plastic waste, hospital waste, used sewerage pipes and chemical containers.

Import of non-sterilized surgical needles and syringes will be restricted to industrial units, condition of Euro-II may be made applicable on import of all types of specialized vehicles, such as crane-mounted lorries, dump trucks and mixtures lorries. The import of used sprinkle lorries will be restricted to a maximum of five year old. All goods from banned list imported in commercial quality shall be allowed to re-export at importer/shipping lines cost. The imported substandard goods from the restricted list should be destroyed within a period of six months without offering any release.

Import of waste and scrape of tyres in completely shredded/ cut form will only be allowed to industrial consumers; domestic standards will equally apply to imported goods as well.

Construction engineering and electrical companies will be allowed to retain abroad the exported machinery to carry out work on export-cum-import basis with the condition that they will import the same on the conclusion of the contract against indemnity bond.

All exporters of edible products are to be registered and export of vegetable ghee and cooking oil will be allowed in packaging of up to 25kg to encourage value-addition.

### ***Steps to contain Environmental & Health Hazards***

- Ban on import of plastic waste/scrap-hospital waste, used sewerage pipes and chemical containers.
- Restricting import of non-sterilized surgical needles and syringes to industrial units.
- Only the more fuel efficient Euro-II category crane-mounted lorries, dump trucks, mixture lorries, etc, will be imported.
- Imported used tyres will only be allowed for industrial use.

### ***Institutions to be Setup***

- Export-Import Bank.
- Pakistan Land Port Authority.
- Leather Export Promotion Council.
- Service Trade Development Council.

## CHAPTER - V

### EXISTING PATTERN OF INDUSTRIAL DEVELOPMENT

#### 5.1 DESCRIPTION OF EXISTING INDUSTRIES

There are about 92 large, medium and some small industrial units in the district. Industry-wise installed capacity of major industrial units is given in Table-8.

**TABLE-8**

#### Industry-wise Installed Capacity

Sr. #	Industry	No. of units	Annual Installed Capacity
1	Chip & Straw Board	6	8500 M.Ton 1020,000 Sq ft
2	Cold Storage	10	184000 Bags
3	Electric Goods	1	20 Lacks Rs.
4	Flour Mills	2	220 M.Ton / Day
5	Foundry Products	9	5100 M.Ton
6	PVC Pipe	1	100,000 RFT
7	Rice Mills	52	39 Sheller, 24 Hullers
8	Sugar	3	22,000 TCD
9	Textile Composite	1	26772 Spindles, 54 Looms
10	Textile Spinning	6	65280 Spindles 3600 Rotors
11	Vegetable Ghee and Cooking Oil	1	42000 M.Tons

**Source:** District Officer (E&IP), Chiniot.

**Note:** For further details visit: [www.doi.pitb.gov.pk](http://www.doi.pitb.gov.pk)



## CHAPTER - VI

### FUTURE INDUSTRIAL POTENTIAL

Keeping in view the availability of raw-material, skilled labour, industrial units, local / national / international demand, future industrial potential of district Chiniot is discussed hereunder:-

It would, however, be kept in mind that though the above mentioned factors facilitate the success of any industrial unit, yet the entire success depends upon the investors / entrepreneurs and the capabilities of the personnel having the managerial control. Therefore, it is advisable that detailed feasibility of industrial project must be carried out before making final decision for investment.

#### 6.1 AGRICULTURE

Main crops of district Chiniot are sugarcane, wheat, rice, maize and Moong. The average annual production of sugarcane, wheat, rice, maize and Moong over the period 2008-09 to 2010-11 was 2070.64, 357.63, 61.88 172.67 and 1016, M.Tons respectively.

Main fruits are citrus, mango and guava. Their average annual production over the period 2008-09 to 2010-11 was 17.164, 3.168, and 5.250

thousand M.Tons. A variety of vegetables are also grown in the district.

At present there are 6 cotton textiles spinning mills, 1 composite unit, 3 sugar mills, 2 flour mills and a number of rice husking units and cold storages in the district.

In view of availability of various raw-materials and existing and under implementation agro-based industries, there seems to be little scope for additional flour mills and sugar mills. However, there exists good scope for solvent oil extraction, vegetable ghee, fruit juice/pickles/squashes, vegetable dehydration, corn oil/starch/glucose, furfural from corn cobs, etc.

## **6.2 LIVESTOCK**

As per record of District Office Livestock & Dairy Development Chiniot , the population of buffaloes, Goat, Cattle and Sheep was 274, 102, 196 and 49 thousand heads respectively.

As regards poultry, there are 94 broiler, 48 layer and 1 breeder farm in the District having rearing capacity of 4445, 244 and 100 thousand birds respectively.

The availability of hides and skins is estimated at 88400 pieces per annum.

In view of the above there exist good prospects for cattle/goats/sheep fattening farms, dairy farms, poultry breeding/hatchery farms, tannery, poultry/animal feed and leather products.

### **6.3 MINERAL**

Chiniot has very rich reserves of mineral resources. Iron Ore deposits were discovered by Punjmin in 1999 about 5 Km south of Chiniot. Iron ore deposits near Rojoa have geological significance, could be a potential and can facilitate establishing of Iron and Steel Mills in Chiniot. It could be used as raw material for steel mills. Likewise sand stone and ordinary sand could facilitate construction industry.

### **6.4 INDUSTRY**

There are 7 cotton textile mills and 3 sugar mills already operating in the district Chiniot.

In view of above, there is ample scope for textile processing/printing, hosiery, children-wear and sports-wear.

On the basis of molasses and bagasse available from the sugar mills, there are better prospects for liquid sugar, citric acid, bakers yeast, paper and paper board and chip/particle board. Besides, in view of the furniture units of Chiniot, there

exist better prospects for wood seasoning/processing units.

## **6.5 DEMAND BASED INDUSTRIES**

In view of localized requirements and existing industrial pattern in district Chiniot there is also scope for biscuits/confectionery, bakery products like bread, bun, etc, RCC pipes/slabs/girders, earthen sanitary ware, aluminium utensils, electrical accessories, footwear, steel sanitary products, etc.

## **6.6 LIST OF IDENTIFIED PROJECTS**

As per discussion given in sections 6.1 to 6.5 the following industrial projects have been identified for investment in district Chiniot:

- Agriculture Waste / by products raw material based industries for maximization of value addition chain.
- Aluminium Utensils
- Bakers Yeast
- Biscuits/Confectionery
- Bakery Products like Bread, Bun, etc.
- Citric Acid
- Children-wear
- Chip/Particle Board
- Corn Oil/Starch/Glucose
- Cattle/Goats/Sheep Fattening Farms
- Dairy Farms

- 
- Earthen Sanitary Ware
  - Electrical Accessories
  - Energy conservation / efficiency
  - Footwear
  - Furfural from Corn Cobs
  - Fruit Juices/Pickles/Squashes
  - Liquid Sugar
  - Leather Products
  - Poultry/Animal Feed
  - Paper and Paper Board
  - Poultry Breeding/Hatchery Farms
  - Power generation through coal and other alternate fuels
  - Power generation through bagasse
  - RCC Pipes/Slabs/Girders
  - Readymade Garments
  - Steel Mills
  - Sports-wear
  - Solvent Oil Extraction
  - Steel Sanitary Products
  - Textile Processing/Printing
  - Vegetable Ghee
  - Vegetable Dehydration
  - Waste heat recovery systems



**Directory of Industrial Establishments, Chiniot**

Sr. No.	Name / Address of unit	Phone No. / Website	Industry	Estb. Year	Investment (Th.Rs.)	Emp	Product	Annual Installed Capacity
1	Aamar & Amjid Straw Board (Pvt) Ltd. Mouza Chak Baudi Sargodha Rd		Chip / Straw Board	1995	17960	25	Straw Board	2500 M.Tons
2	Ahmed Straw Board (Pvt) Ltd. 3 Km., Faisalabad Road Chiniot	6333624	Chip / Straw Board	1990	29500	152	Straw Board	2500 M.Tons
3	Chenab Board Gatta Factory (Pvt) Ltd. (Old Name Mian International), Faisalabad Road, Chiniot	633624	Chip / Straw Board	1995	19500	41	Straw Board	2000 M.Tons
4	Kashmir Lamination Board (Shine Boards (Pvt) Ltd.), Faisalabad Road, Chiniot	6656514	Chip / Straw Board	1995	60000	C	Farmica Sheets	960000 Sq.Ft.
5	Moon Ply Factory Bahari Colony Chiniot	6331019	Chip / Straw Board	1995	2600	12	Plywood	60000 Sq.Ft.
6	Punjab Gatta Fty. Faisalabad Road Chiniot		Chip / Straw Board	1980	260	12	Straw Board	1500 M.Tons
7	Al-Jamil Cold Storage Faisalabad Road Chiniot	6330117	Cold Storage	1993	4700	6	Vegetable/ Fruits	12000 Bags
8	Al-Noor Cold Storage Faisalabad Road Lalian	6611099	Cold Storage	1999	13500	14	Vegetable/ Fruits	25000 Bags
9	Bashir Cold Storage Sargodha Road Lalian	6610215	Cold Storage	1993	4300	5	Vegetable/ Fruits	12000 Bags

Sr. No.	Name / Address of unit	Phone No. / Website	Industry	Estb. Year	Investment (Th.Rs.)	Emp	Product	Annual Installed Capacity
10	Crescent Cold Storage Faisalabad Road Chiniot	6332761	Cold Storage	1980	5000	5	Vegetable/ Fruits	25000 Bags
11	Hanif Cold Storage Near G.B.S.Chiniot	6332634	Cold Storage	1974	2350	5	Vegetable/ Fruits	15000 Bags
12	Lalian Cold Storage Sargodha Road Lalian	6610215	Cold Storage	1981	1150	20	Vegetable/ Fruits	20000 Bags
13	Randhawa Cold Storage Faisalabad Road Chiniot		Cold Storage	1992	2440	6	Vegetable/ Fruits	13000 Bags
14	Rustam Cold Storage Lahore Road Chiniot	6330507	Cold Storage	1985	4500	14	Vegetable/ Fruits	31000 Bags
15	Tariq Cold Storage, Opp. Sabzi Mandi		Cold Storage	1999	1800	9	Vegetable/ Fruits	15000 Bags
16	Tariq Wala Roy Cold Storage & Ice Factory Lahore Road	6332810	Cold Storage	1981	2270	7	Vegetable/ Fruits	16000 Bags
17	Eagle Bakolite P-10/5, Block Darul Saddar Rabwah		Electric Goods	1995	600	9	Electric Goods	20 Lac Rs.
18	Hassan Flour Mills Hassanabad 8 Km., Jhang Road Lalian	6632080	Flour Mills	2000	12016	25	Flour	120 M.Tons /Day
19	Leghari Flour Mills (Pvt) Ltd. Faisalabad Road Chiniot	6783233, 6783245	Flour Mills	1994	10466	14	Flour	100 M.Tons /Day
20	Amjid Ali Foundry Chah Lahoran Near Railway Crossing		Foundry Products	1995	1470	9	Steel Casting	600 M.Tons

Sr. No.	Name / Address of unit	Phone No. / Website	Industry	Estb. Year	Investment (Th.Rs.)	Emp	Product	Annual Installed Capacity
21	Aslam Foundry Sargodha Road Behind Sona Urea Chiniot		Foundry Products	1995	1870	7	Steel Casting	600 M.Tons
22	Hameed Foundry Chah Lahorian Near Railway Line Sargodha Road Chiniot		Foundry Products	1995	800	12	Steel Casting	600 M.Tons
23	K.Y. Foundry Sargodha Road Old General Bus Stand Chiniot	6332674	Foundry Products	1995	1950	5	Steel Casting	600 M.Tons
24	Kisan Foundry Sargodha Road Chiniot	6332648	Foundry Products	1985	1315	9	Steel Casting	450 M.Tons
25	Muhammad Hussain Foundry Sargodha Road Opposite Macca Ice Factory Chiniot		Foundry Products	1995	1500	10	Steel Casting	600 M.Tons
26	Naseem Tubeweli Foundry Muhallah Mustafabad Sargodha Road Chiniot	6331036	Foundry Products	1987	1350	6	Steel Casting	600 M.Tons
27	Popular Foundry Sargodha Road Chiniot		Foundry Products	1990	1400	7	Steel Casting	600 M.Tons
28	Rajput Foundry Mustafabad Sargodha Road Chiniot	6333361	Foundry Products	1989	1435	11	Steel Casting	450 M.Tons

Sr. No.	Name / Address of unit	Phone No. / Website	Industry	Estb. Year	Investment (Th.Rs.)	Emp	Product	Annual Installed Capacity
29	Al-Karam P.V.C. Pipe Fty. Behary Colony Chiniot	6330340	Pvc Pipe	1994	425	5	Pvc Pipes	100000 Rft
30	Abdul Hafeez Rice Mills Rajoa Sayyedan	6330040	Rice Mills	1970	20	5	Rice	1 Huller
31	Ahmad Rice Mills Lahore Road Chiniot	6535651	Rice Mills	2000	3500	22	Rice	1 Sheller
32	Aisha Rice Mills, Faisalabad Road, Chiniot	0322-77001123	Rice Mills	2008	1700	16	Rice	1 Sheller
33	Al-Asghar Rice Mills Faisalabad Road, Chiniot		Rice Mills	1990	900	C	Rice	1 Sheller
34	Al-Faisal Rice Mills Jhumra Road, Chiniot		Rice Mills	1975	2600	22	Rice	1 Sheller
35	Amir Muhammad Rice Mills Salara Road, Ahmedpura		Rice Mills	1990	60	5	Rice	1 Huller
36	Amir Rice Mills Mauza Dawar Rabwah Tarkhana Road, Chiniot		Rice Mills	1990	45	5	Rice	1 Huller
37	Arous Rice Mills, Faisalabad Road, Chiniot	6000709, 041-8860884	Rice Mills	2007	1500	14	Rice	1 Sheller
38	Aslam Brothers Rice Mills Lahore Road, Chiniot	6331122, 6332643	Rice Mills	1980	2600	8	Rice	1 Sheller
39	Atteq-Ul-Rehman Rice Factory Faisalabad Road		Rice Mills	1990	70	70	Rice	1 Huller

Sr. No.	Name / Address of unit	Phone No. / Website	Industry	Estb. Year	Investment (Th.Rs.)	Emp	Product	Annual Installed Capacity
40	Azeem-Ul-Din Rice Mills Lahoree Road Chiniot		Rice Mills	1992	50	5	Rice	1 Huller
41	Aziz Din Rice Mills Jhumra Road, Chiniot		Rice Mills	1991	15	5	Rice	1 Huller
42	Bashir Ahmed Rice Mills Rajoa Seyyedana, Chiniot	6330600	Rice Mills	1979	35	5	Rice	1 Huller
43	Bhowana Rice Mills Bhowana Chiniot	621300	Rice Mills	1993	2400	28	Rice	1 Sheller
44	Bukhshi Rice Mills Lahore Road, Chiniot	6332228	Rice Mills	1970	6500	37	Rice	1 Sheller
45	Chenab Rice Mills Jhang Road 4 Th Km. Chiniot	6330428	Rice Mills	1998	4500	28	Rice	1 Sheller
46	Chiniot Rice Sheller Jhumra Road Chiniot		Rice Mills	2007	1400	11	Rice	1 Sheller
47	Crystal Rice Processing Mill 6Th Km Jhang Road Bhawana Chiniot	6221025	Rice Mills	2002	4000	30	Rice	1 Sheller
48	Dr. Faiz Qadar And Co Rice Mills Ahmed Nagar, Chiniot	6212333	Rice Mills	1982	3800	6	Rice	3 Shellers
49	Evergreen Rice Mills, Lahore Road, Chiniot	0302-8443885	Rice Mills	2007	1700	20	Rice	1 Sheller
50	Falak Sher Rice Mills Faisalabad Road, Chiniot		Rice Mills	1989	50	5	Rice	1 Huller

Sr. No.	Name / Address of unit	Phone No. / Website	Industry	Estb. Year	Investment (Th.Rs.)	Emp	Product	Annual Installed Capacity
51	Habib Khan Rice Mills Faisalabad Road, Chiniot		Rice Mills	1995	1150	5	Rice	2 Hullers
52	Hafiz Rice Mills Lahore Road Chiniot	6335529	Rice Mills	1999	3000	28	Rice	1 Sheller
53	Haji Ahmed Rice Mills Salara Road, Ahmedpur Chiniot		Rice Mills	1990	40	5	Rice	1 Huller
54	Haji Muhammad Habib Rice Mills Mouza Salara Chiniot		Rice Mills	1989	8	5	Rice	1 Huller
55	Haji Muhammad Ishaque Rice Mills Lahore Road Chiniot		Rice Mills	1951	1115	5	Rice	1 Sheller
56	Hari Rice Mills Muradwala Lahore Road Chiniot	6331503	Rice Mills	1979	2485	10	Rice	1 Sheller
57	Iqbal Rice Mills Faisalabad Road, Chiniot	6332734, 6331534	Rice Mills	1989	700	14	Rice	3 Shellers
58	Khan Rice Mills Bhutto Colony Faisalabad Road, Chiniot		Rice Mills	1987	112	5	Rice	1 Huller
59	Makki Rice Mills Faisalabad Road, Chiniot	6332902	Rice Mills	1983	3985	10	Rice	1 Sheller
60	Mistri Mohammad Aslam Mohallah Garah, Alamgir Old		Rice Mills	1987	250	2	Rice	1 Huller

Sr. No.	Name / Address of unit	Phone No. / Website	Industry	Estb. Year	Investment (Th.Rs.)	Emp	Product	Annual Installed Capacity
61	Muhammad Shafi Rice Mills Mauza Dawar Tarkhanawala Road, Chiniot		Rice Mills	1990	75	5	Rice	1 Huller
62	Mukkaram Rice Mills, Faisalabad Road	7623714	Rice Mills	2008	1600	14	Rice	1 Sheller
63	Mumtaz Hussain Rice Mills Rasoolpur Sargodha Road		Rice Mills	1990	30	5	Rice	1 Huller
64	Naseeb Khan Rice Mills Faisalabad Road, Chiniot		Rice Mills	1980	60	5	Rice	1 Huller
65	New Fine Rice Mills Tibbi Dal Meer Link Road Sar Murad Wala Chiniot	320103	Rice Mills	1970	4000	28	Rice	1 Sheller
66	Qazi Rice Mills Mauza Dawar Tarkhanawal Road, Chiniot		Rice Mills	1985	60	5	Rice	1 Huller
67	Raheem Rice Factory Muhallah Hasnana		Rice Mills	1989	790	9	Rice	3 Hullers
68	Rao Bagh Sheller Lahore Road Chiniot		Rice Mills	2002	9000	10	Rice	1 Sheller
69	Rashid Rice Factory Mauza Netherkey Bhawana		Rice Mills	1995	826	12	Rice	1 Sheller
70	Rashid Sons Rice Factory Sialanwali Road, Rabwah	6212193	Rice Mills	1994	2600	19	Rice	1 Sheller

Sr. No.	Name / Address of unit	Phone No. / Website	Industry	Estb. Year	Investment (Th.Rs.)	Emp	Product	Annual Installed Capacity
71	Rehman Rice Factory Jhang Road Chiniot	6330774	Rice Mills	2004	4200	25	Rice	1 Sheller
72	Riseing Chemab Rice Mills, Chiniot Road	0300-6509465	Rice Mills	2008	1600	17	Rice	1 Sheller
73	Sardar Ali Rice Mills Rajoa Seyyedat Chiniot		Rice Mills	1991	35	5	Rice	1 Huller
74	Shah Industries Shah Murad Wala Chiniot		Rice Mills	1995	2900	14	Rice	1 Sheller
75	Shahab Rice Mills Kot Amir Shah, Sargodha Road, Rabwah	6212464	Rice Mills	1993	1500	5	Rice	3 Shellers
76	Shahid Sharif Rice Export, Sargodha Road	7626081	Rice Mills	2007	1400	13	Rice	1 Sheller
77	Shahid Sharif Rice Mills, Sargodha Road	7624905	Rice Mills	2008	1600	18	Rice	1 Sheller
78	Sultan Rice & General Mills, Chiniot		Rice Mills	2003	1200	10	Rice	1 Sheller
79	Tanvir Rice Mills Grain Market Faisalabad Road	7332110	Rice Mills	1980	2450	10	Rice	1 Sheller
80	White Rose Rice Mills Faisalabad Road Ahmad Nagar Chiniot	6212626	Rice Mills	2000	7000	31	Rice	1 Sheller

Sr. No.	Name / Address of unit	Phone No. / Website	Industry	Estb. Year	Investment (Th.Rs.)	Emp	Product	Annual Installed Capacity
81	Zamindar Rice Mills Lahore Road, Chiniot	6331122	Rice Mills	1976	2557	26	Rice	1 Sheller
82	Madina Sugar Mills Faisalabad Road Chiniot	6335675-6	Sugar	2005	1000	270	Sugar	10000 Tcd
83	Ramzan Sugar Mills Ltd; 26 Km., Jhang Road	6322145-55	Sugar	1991	952636	950	Sugar	8000 Tcd
84	Safina Sugar Mills Ltd. Chiniot Sargodha Road, Lalian	6610011-2	Sugar	1992	32960	554	Sugar	4000 Tcd
85	Shamas Textile Mills Ltd. Faisalabad Road, Chiniot	6617730, 6330302	Textile Composite	1968	173549	996	Cotton Yarn, Cloth	26772 Spindles, 54 Looms
86	Ahmed Enterprises, Faisalabad Road, Chiniot	0300-8668172	Textile Spinning	2008	20000	40	Cotton Yarn	600 Rotors
87	Areeha (Pvt) Ltd. Faisalabad Road, Chiniot	7692624, 7333624	Textile Spinning	1990	43768	400	Cotton Yarn	1400 Rotors
88	Hamza Enterprises, Faisalabad Road, Chiniot	041-2412040	Textile Spinning	2003	4000	35	Cotton Yarn	1600 Rotors
89	Sarfraz Textile Mills (Pvt) Ltd Thattian Chiniot	6764610, www.tayyabgroup.com	Textile Spinning	2003	540000	262	Cotton Yarn	20640 Spindles
90	Shams Textile Mills Ltd Sargodha Road Chiniot	6332407	Textile Spinning	1968	350312	690	Pc Yarn	24960 Spindles

Sr. No.	Name / Address of unit	Phone No. / Website	Industry	Estb. Year	Investment (Th.Rs.)	Emp	Product	Annual Installed Capacity
91	Tayyab Textile Mills Ltd. 25-Km Faisalabad Sargodha Rd, Thatian	6764610, Wwww.Tayyabgroup.Com	Textile Spinning	1992	421622	274	Cotton Yarn	19680 Spindles
92	Madina Enterprises Ltd. Faisalabad Road Chiniot	6333589	Vegetable Ghee And Cooking Oil	1991	68849	154	Vegetable Ghee/ Cooking Oil	42000 M.Tons

Source: Directorate of Industries, Punjab

## LIST OF CONTACT NUMBERS

### *Directorate of Industries Punjab*

<b>Designation</b>	<b>Contact</b>
Director Industries, Punjab	Tel: +92 (42)-99211520-1 Fax: +92 (42)-99211522 dipunjab@gmail.com
Additional Director Industries	Tel: +92 (42)-99211531 +92 (42)-99212752 Fax: +92 (42)-99212753
Joint Director (Development)	Tel: +92 (42)-99211526
Senior Economist	Tel: +92 (42)-99211533
Staff Economist	Tel: +92 (42)-99211534
Deputy Director (Admin)	Tel: +92 (42)-99211528
Deputy Director (Development)	Tel: +92 (42)-99211528
Deputy Director (Planning)	Tel: +92 (42)-99211530
Assistant Director (Admin)	Tel: +92 (42)-99211529
Assistant Director (Planning)	Tel: +92 (42)-99211530
Assistant Director (Statistics)	Tel: +92 (42)-99211524
Assistant Registrar	Tel: +92 (42)-99211523
Librarian	Tel: +92 (42)-99213010
District Officer (E&IP), Chiniot	Tel: +92 (47)-6330071

### *Other Relevant Departments*

<b>Department</b>	<b>Contact</b>
Secretary, Industries, Commerce & Investment Department, Govt. of the Punjab	Tel: +92 (42) 99210534-5 Fax: +92 (42) 99210536
Punjab Board of Investment & Trade (PBIT)	Tel: +92 (42) 99205201 info@pbit.gop.pk
Small & Medium Enterprises Development Authority (SMEDA)	Tel: +92(42)-111-111-456 Fax: +92 (42) 36304926-7 info@smeda.org.pk
Punjab Industrial Estates Development and Management Company (PIEDMC)	Tel: +92 (42) 35297203-6 Fax: +92 (42) 35297207 info@pie.com.pk
Punjab Small Industries Corporation (PSIC)	Tel: +92 (42) 99200453



## BIBLIOGRAPHY

- Punjab Development Statistics 2011, Bureau of Statistics, Government of the Punjab
- The Urban Unit, Planning & Development Department, Government of the Punjab.
- Technical Education and Vocational Training Authority
- Chief Inspector of Boilers, Directorate of Industries, Punjab
- Directorate of Agriculture, Crop Reporting Service, Punjab
- Chief Conservator of Forest Planning, Monitoring and Evaluation, Punjab
- Directorate General (Ext), Livestock & Dairy Development Punjab
- Directorate General Mines & Minerals, Punjab
- Punjab Small Industries Corporation
- Punjab Industrial Estates Development and Management Company
- Faisalabad Industrial Estates Development and Management Company
- Industries, Commerce & Investment Department, Government of the Punjab
- District Officers (Enterprise & Investment Promotion) as well as District Administration
- Export Processing Zones Authority
- Board of Investment, Government of Pakistan
- Website of Stat Bank of Pakistan
- Ministry of Commerce, Govt. of Pakistan
- Directory of Industrial Establishments Punjab, Directorate of Industries, Punjab

