

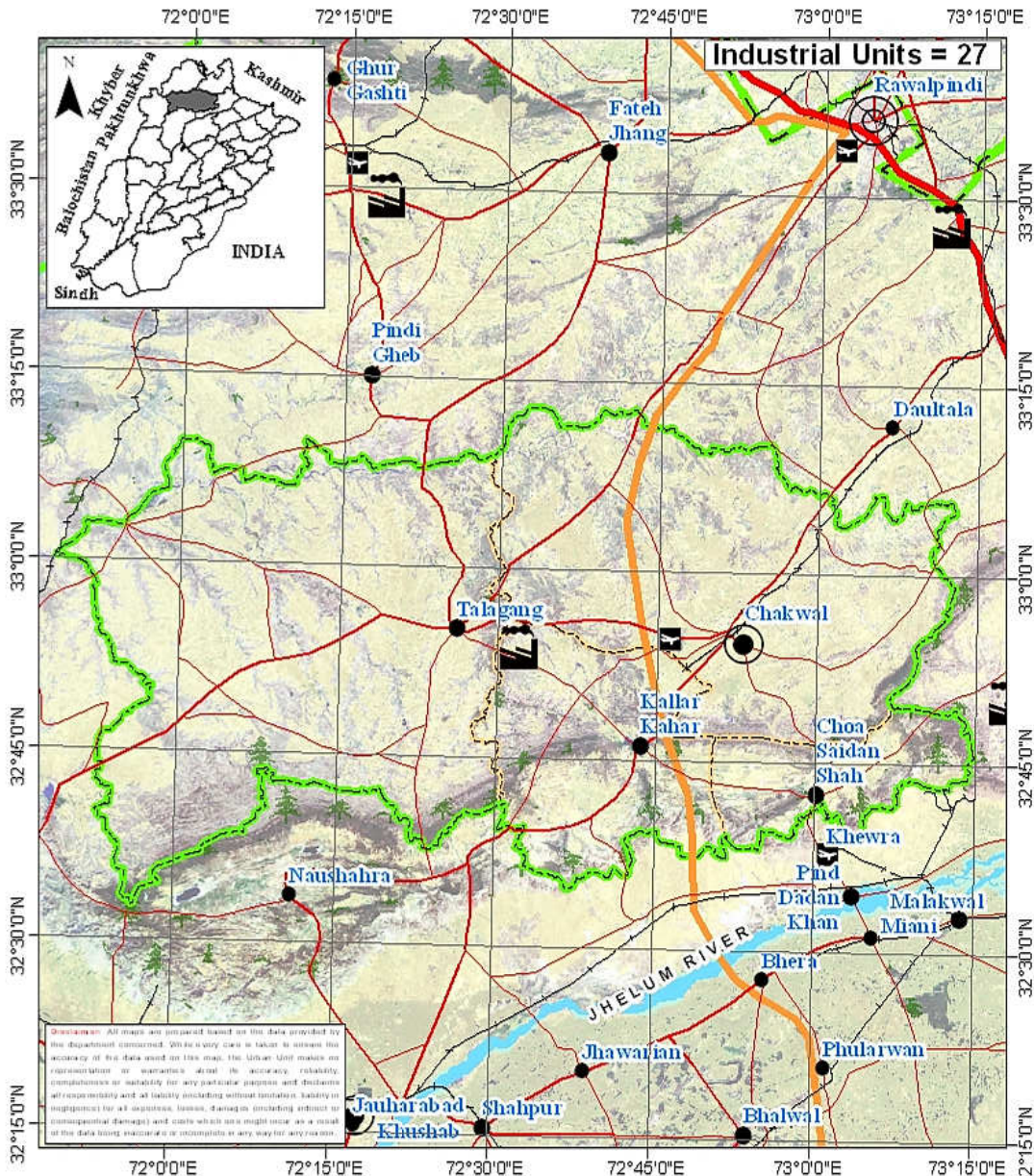
District Pre-Investment Study - 2012

Chakwal



Directorate of Industries, Punjab
Poonch House, Multan Road, Lahore.

District Chakwal



Disclaimer: All maps are prepared based on the data provided by the department concerned. While every care is taken to ensure the accuracy of the data used on this map, the Urban Unit makes no representation or warranties about the accuracy, reliability, completeness or suitability for any particular purpose and disclaims all responsibility and all liability including without limitation, liability in negligence for all damages, losses, claims or costs which may result as a result of the data being inaccurate or incomplete in any way for any reason.

Director's Message

After spending past two years in Directorate of Industries, Punjab, I feel very privileged to be writing this message as Director Industries, Punjab.



This is the time we publish the 7th edition of the District Pre-Investment Studies of 36 Districts of Punjab, which has now become synonymous with our commitment to helping Industrialists, new entrepreneurs as well as Researchers. As Director Industries Punjab, I have seen much change, like:

- Relocation plan for the industrial units located within residential areas to industrial estates / positive areas declared by the District Governments.
- Adaptation of Boilers & Pressure Vessels Ordinance 2002.
- Conduct of Census of Manufacturing Industries.
- A scheme "Improvement and Up-gradation of Boilers Inspection Wing" has been approved by the Planning & Development Department, Government of the Punjab with the cost of Rs.10 Million.
- A Scheme "Sports Goods and Material Testing Laboratory" is under process in Planning & Development Department, Government of the Punjab. The estimated cost of the scheme is Rs.450 Million.
- The proposal for Capacity Building of Directorate of Industries Punjab is under process in Industries, Commerce & Investment Department, Government of the Punjab with the estimated cost of Rs.109.75 Million.
- We launch our website www.doi.pitb.gov.pk.

Looking ahead, we are focused on accelerating the execution of growth and promote industrial investment in the province. I am incredibly excited about this and truly believe the best of time for industrial investment is yet to come, Insha Allah.

(Muhammad Siddique Sheikh)
Director Industries, Punjab

Preface

Pre-investment studies for the districts in the Punjab were first published by the Directorate of Industries and Mineral Development, Punjab in the year 1979, with the prime objective of providing data which might interest private entrepreneurs and the framers of the Provincial and National Strategies in the industrial sector.

The second, third, fourth, fifth and sixth series of Pre-investment Studies for all districts of Punjab were published in 1983, 1992, 2002, 2006 and 2009 respectively. The present edition is seventh in the series.

This study basically updates the information contained in sixth series of district pre-investment studies. Efforts have been made to provide latest information collected through published sources, offices of the respective Government Departments/Agencies and District Offices of Industries Department. Quality addition of Industrial Policy Framework, recently promulgated Special Economic Zone Act 2012, Strategic Trade Policy Framework (2012-15) and Digital Maps by Urban Unit has improved these studies significantly.

The information has been updated in respect of population, manpower, production of agriculture crops, fruits, vegetables, livestock, forest resources, ores/minerals, infrastructural facilities such as technical/vocational training facilities, communication net-work, sub-soil water quality/effluent disposal

facilities, power/gas supply, tele-communication facilities, industrial estates, dry ports, industrial financing facilities, loaning scheme of PSIC, industrial policy, investment policy, fiscal incentives, Special Economic Zone Act 2012 and Strategic Trade Policy Framework (2012-15) etc. New policy measures regarding declaration of negative and specified positive areas have also been incorporated.

The study also includes information regarding existing industrial pattern, industry wise installed capacities and details regarding existing major industrial units in each district.

Effort has been made to identify various industries considering the availability of raw materials, skilled labour, linkage between industrial units and local/national/international demand. The suggested industries are, however, merely of indicative nature and it is advisable that prospective investors should conduct detailed feasibility report before making final decision for investment.

It is worthwhile to mention that industrial sector in Punjab has grown gradually from 6,223 industrial units in 1975 to 17,857 industrial undertakings in 2010. Sectoral growth has also been registered, resulting in substantial value addition. Value addition chain can be maximized by processing the agricultural industrial waste like rice husk, cotton stock, maize and corn cob. Herbal products is another untapped area. Live Stock, Dairy Development and poultry are fast growing sectors. Processing of food products can fetch handsome dividends. Currently information technology sector is growing by 39% annually in Pakistan. Fashion

industry is also developing rapidly. Similarly, chemical sector has lot to offer by utilizing the available mineral resources as raw material.

Issue of energy shortage can be addressed by dealing with power generation as an industry. Local as well as foreign investors have golden opportunity to set up power generation stations based on coal and other alternate fuels, under the captive power plants policy allowed in the newly promulgated SEZ Act, 2012. Punjab offers very good opportunity to the local as well as foreign investors to set up small, medium and heavy industries in variety of sectors. It has a growing market of over 90 million consumers, abundant manpower / labour force and cheap raw material with reasonably controlled law & order.

The Industries, Commerce & Investment Department has sufficient institutional frame work of attached and autonomous bodies to look after the industrial issues. Directorate of Industries, Small Industries Corporation (PSIC), Board of Investment (PBIT), Punjab Industrial Estates Development and Management Company (PIEDMC), Faisalabad Industrial Estates Development and Management Company (FIEDMC) have blend of professionals from the public as well as private sector. These legal entities are working in close coordination with the Chambers of Commerce and Industries systematically to promote industrialization and trade.

Development schemes regarding establishment of Industrial Resource Centre at the Directorate of Industries, setting up Sports & Material Testing Lab at EPZ, Sambrial and Industrial Safety Institute are under consideration with the Planning and Development

Department. Completion of these schemes will definitely help in promotion of industrialization process with enhanced industrial safety.

I must record my appreciation to Mr. Muhammad Akram Awan, Senior Economist, who effectively planned, coordinated and provided the guidance to his team members for completion of this study. Credit also goes to Mr. Muhammad Jamil Chishty, Staff Economist for his dedicated support rendered in the completion process of this study and Mr. Waseem Haider, Stenographer, for his tireless typing and composition work on computer.

I am grateful to all the District Officers, Enterprise & Investment Promotion who provided the relevant information of their respective districts for incorporating in pre-investment studies. I am also thankful to various Provincial Departments for supplying the required data to the Directorate of Industries. My special thanks are due to Dr. Nasir Javed, Project Director, Urban Unit for the provision of digital maps and the Punjab Printing Press.

Any suggestion for the improvement of the study will be welcomed.

Dec. 31, 2012

(Muhammad Siddique Sheikh)
Director Industries, Punjab

Contents

Section	Page
District at a Glance	1
1. Geographical Conditions	3
1.1 Brief Description of the District	3
1.2 Climate and General Soil Conditions	3
2. Man-Power	5
2.1 Total Population of the District	5
2.2 Man-Power Availability	5
2.3 Traditional Crafts	9
2.4 Geographical Indications	10
3. Natural Resources	11
3.1 Agriculture	11
a) Main Crops	11
b) Main Fruits	12
c) Main Vegetables	12
3.2 Forests	13
a) Location of Forests and Area under Afforestation	13
b) Production of Timber and Fire-wood	14
3.3 Livestock Population	14
a) Animal Population	14
b) Poultry Population	15
c) Availability of Hides/Skins & Slaughter House Wastes	15
d) Production of Wool	15
3.4 Ores and Minerals	16
a) Reserves	16
b) Major Minerals	16
c) Industrial Uses of Minerals	17

4. Infrastructural Facilities	19
4.1 Communication Network	19
a) Road Links	19
b) Rail Links	19
4.2 General Quality and Availability of Sub Soil Water	19
4.3 Effluent Disposal Facilities	20
4.4 Power Supply	20
4.5 Natural Gas Availability	20
4.6 Telecommunication Facilities	20
4.7 Social Infrastructural Facilities	20
4.8 Industrial Estates	21
4.9 Dry Port	22
4.10 Industrial Policy	22
4.11 Declaration of Negative Areas	26
4.12 Declaration of Positive Areas	28
4.13 Incentives for Investors to set a unit in EPZs	30
4.14 Pakistan's Investment Policy – Key Features	32
4.15 Industrial Financing Facilities	35
4.16 Salient Features of Loaning Scheme of PSIC	38
4.17 Salient Features of the SEZ Bill 2012	39
4.18 Strategic Trade Policy Frame Work (2012-2015)	41
5. Existing Pattern of Industrial Development	47
5.1 Description of Existing Industry	47
6. Future Industrial Potential	49
6.1 Agriculture	49
6.2 Livestock	50
6.3 Mineral	51
6.4 Industry	51
6.5 Demand Based Industries	51
6.6 List of Identified Projects	52

Annex	Page
Directory of Industrial Establishments	55
List of Contact Nos.	59
Bibliography	61

DISTRICT AT A GLANCE

1	Population (000 Numbers)	:	1,314
2	Area (Square Kilometres)	:	6,524
3	Population Density (per sq. km.)	:	202
4	Tehsils / Towns	:	Chakwal, Choa Saiden Shah, Kalar Kahar and Talagang.
5	Main Crops	:	Wheat, Ground Nut, Jawar, Bajra and Gram.
6	Main Fruits	:	Citrus, Guava and Loquat
7	Main Vegetables	:	Turnip, Cauliflower, Tomato, Lady Finger, Spinach and Potato
8	Forest Resources (Area in Acres)	:	1,78,320.28
9	Mineral Resources	:	Limestone, Coal, Rock salt, Argillaceous clay, Gypsum, Dolomite, Bentonite and Iron ore
10	Total Metalled Roads (KM)	:	2,730
11	No. of Grid Stations	:	7
12	No. of Telephone Exchanges	:	63
13	Number of Industrial Units (Large Medium and Some Small Selected Sectors)	:	27

- 14 Type of Industrial Units : Agricultural Implements, Cement, Ceramics Products, Cold Storage, Flour Mills, Poultry Feed, Textile Spinning and Tobacco

CHAPTER - I

GEOGRAPHICAL CONDITIONS

1.1 BRIEF DESCRIPTION OF THE DISTRICT

Chakwal was given the status of district in 1985. Attock and Rawalpindi districts are located on its North; Khushab on its South, Jhelum on its East and Mianwali district is on its West. The total area of the district is 6524 square kilometres and includes the following tehsils:-

- i) Chakwal
- ii) Choa Saidan Shah
- iii) Kalar Kahar
- iv) Talagang

1.2 CLIMATE AND GENERAL SOIL CONDITIONS

The weather is hot in summer where as dry and cold in winter. The average annual rainfall is 880 mm. The temperature during the winter is 8°C, which shoots up to 42°C during summer. The land is plain as well as hilly.

CHAPTER - II

MAN POWER

2.1 TOTAL POPULATION OF THE DISTRICT

According to Punjab Development Statistics 2011 total population of Chakwal district is 1,314 thousand persons out of which 641 thousand are males and 673 thousand are females. Density of population in the district is 202 persons per square kilometres

Tehsil wise distribution of Urban and Rural population is given in Table-1

TABLE-1

Town-Wise Distribution of Urban & Rural Population

Town	Population (Thousand Nos.)		
	Urban	Rural	Total
Chakwal	98	497	595
Choa Saidan Shah	16	108	124
Kalar Kahar	0	131	131
Talagang	46	418	464
Total	160	1154	1314

Source: Punjab Development Statistics, 2011

2.2 MAN POWER AVAILABILITY

As regards availability of skilled labour, there are 14 commerce / vocational institutions (8 for men

and 6 for women) imparting training in commerce. Vocational institutions for women impart training in hand/machine embroidery, stitching and knitting, commerce, drawing and design tailoring etc. In all about 1,337 trained workers are turning out every year. Details are given in Table-2.

TABLE - 2

Commercial and Technical Institutions

Sr #	Name & Description of Commercial / Technical Training Institutions	Types of Training Courses Offered	Duration of Course	Average No of Students Enrolled / Session
For Men				
1	Govt. Institute of Commerce, Near Imdadia Masjid, Mandi Road, Chakwal.	D.Com	24 Months	162
2	Govt. Institute of Commerce, Near Masjid Farroq Azam Mohallah Said Pur, Talagang	D.Com	24 Months	161
3	Govt. Technical Training Centre (ABAD), Choa Saiden Shah, Chakwal Road.	Electrical, Tailoring, Machine Shop	12 Months	53

4	Govt. Technical Training Institute, Talagang, Near Eid Gah, Mianwali Road.	Electrical, Welder, Auto Mechanic, Tractor Operator	6 to 12 Months	61
5	Agriculture Machinery Training School, APC Colony, Pindi Road, Talagang.	Tractor Operator Auto Farm Machinery	6 Months	72
6	Govt. Technical Training Centre (PSIC), Tamman, Tehsil Talagang, Chakwal	Machinist, Welder, Electrician, Auto & Farm Machinery	6 Months	44
7	Govt. Technical Training Centre, Kallar Kahar Main Road, Kacha Pakka Stop, Khushab Road, Kallar Kahar.	Electrician, Welder, Plumber	6 Months	90
8	Govt. Technical Training Institute, Pinwal Road, Chakki Wali, Mohallah Dhoke Feroze, Chakwal.	Auto Mechanic, Electrician, Motor Winding, MS I.T. Academy, Electronics Application (Radio & T.V.) Certificate in Computer Application.	3 to 12 Months	103

For Women				
9	Govt. Vocational Training Institute, Talagang.	Vocational Diploma, Tailoring, Dress Designing & Making, Fabric Printing, Certificate in Computer Application.	3 to 24 Months	74
10	Govt. Vocational Training Institute (ABAD), Tesil Chowk (Old Lock Up) Opp. Church, Chakwal.	Beautician, Vocational Diploma Certificate in Computer Application, Fashion Design, Tailoring	3 to 24 Months	74
11	Govt. Technical Training Centre, Village Noor Pur, Tehsil Kallar Kahar, Chakwal.	Machine Hand Embroidery, Domestic Tailoring.	3 to 6 Months	45
12	Govt. Vocational Training Institute, Near GGHS, Lawa, Tehsil Talagang, Chakwal.	Certificate in Computer Application, Dress Designing & Making, Vocational Diploma Tailoring.	3 to 24 Months	58

13	Govt. Vocational Training Institute, Near Govt. Middle School, Pindi Chakwal Road, Dhudial Camp, Chakwal.	Certificate in Computer Application, Dress Designing & Making, Tailoring, Vocational Certificate & Diploma, Beautician	3 to 24 Months	130
14	Govt. Vocational Training Institute, Near Union Council Office Mulahal Mughlan, Distt. Chakwal.	Certificate in Computer Application, Office Management, Dress Designing & Making, Tailoring, Hair & Skin Care, Fashion Design, Beautician, Microsoft I. T. Academy	2 to 12 Months	188

Source: TEVTA

2.3 TRADITIONAL CRAFTS

Chakwal is famous for making “Zari” Shoes. “Khes” weaving is also an important traditional craft of the district.

2.4 GEOGRAPHICAL INDICATIONS

The Project Director (Geographical Indications), Industries, Commerce & Investment Department, Government of the Punjab has identified the following Important Geographical Indications in the district:

- Zari Chaple
- Ground Nut
- Wheat
- Gram
- Lentil
- Sarso
- Peanut
- Chakwal Stone

CHAPTER - III

NATURAL RESOURCES

3.1 AGRICULTURE

a) Main Crops

Wheat, Ground Nut, Jawar, Bajra and Gram are the main crops grown in the district. Production of these crops during the period 2008-09 to 2010-11 is given in Table - 3.

TABLE-3

**Production of Main Crops
(2008-09 to 2010-11)**

Crop	Production (Th. M.Tons)		
	2008-09	2009-10	2010-11
Wheat	169.22	41.30	165.93
Ground Nut	17	18	28
Jawar	8.5	6.8	7.8
Bajra	6.6	4.5	6.4
Gram	8.4	3.9	7.9

Source: Directorate of Agriculture, Crop Reporting Service, Punjab

Besides, Rape / Mustard Seed, Maize, Moong, Mash, Masoor and Sun Flower are also grown in minor quantities in the district.

b) Main Fruits

Citrus, Guava and Loquat are main fruits grown in the district. Production of these fruits during the period 2008-09 to 2010-11 is given in Table - 4

TABLE-4

**Production of Main Fruits
(2008-09 to 2010-11)**

Fruit	Production (M.Tons)		
	2008-09	2009-10	2010-11
Citrus	237	370	282
Guava	182	173	173
Loquat	210	233	178

Source: Directorate of Agriculture, Crop Reporting Service, Punjab

Besides, Apricot, Banana, Pears, Peaches and Pomegranate are also grown in minor quantity in the district.

c) Main Vegetables

Turnip, Cauliflower, Tomato, Lady Finger, Spinach and Potato are main vegetables grown in the district. Production of these vegetables during the period 2008-09 to 2010-11 is given in Table - 5

TABLE-5

**Production of Main Vegetables
(2008-09 to 2010-11)**

Vegetable	Production (M.Tons)		
	2008-09	2009-10	2010-11
Turnip	366	367	374
Cauliflower	336	350	350
Tomato	305	308	318
Lady Finger	479	488	509
Spinach	583	597	-
Potato	523	325	1534

Source: Directorate of Agriculture, Crop Reporting Service, Punjab

Besides, Matter Green, Carrot, Cabbage, Tinda, Bitter Gourd, Onion, Chillies and Garlic are also grown in the district in minor quantities.

3.2 FORESTS

a) Location of Forests and Area under Afforestation

An area of 178320.28 Acres is under forests, which is about 11.07 % of the total area of the district. There is also linear plantation of 415 Km. alongside the roads/rails/canals in the district. Trees grown in the area are phalai, kikar and shisham, etc.

b) Production of Timber and Firewood

The production of Timber and Fire-Wood in the district during the period 2008-09 to 2010-11 is given in Table 6.

TABLE-6

**Production of Timber & Firewood
(2008-09 to 2010-11)**

Year	Production (Cubic Meter)	
	Timber	Firewood
2008-09	84.91	-
2009-10	40.36	-
2010-11	977.18	-

Source: Forestry, Wildlife and Fisheries Department

3.3 LIVESTOCK POPULATION

a) Animal Population

The animal population of the district is given in Table - 7.

TABLE - 7

ANIMAL POPULATION

Animals	Population (Th Heads)
Cattle	527
Buffaloes	169
Sheep	168
Goat	666

Source: Livestock & Dairy Development Department.

b) Poultry Population

As per Punjab Development Statistics 2011 there are 1500 broiler and 260 layer poultry farms in the district having rearing capacity of 52500 and 1400 thousand birds respectively. There are 6 breeding farms having rearing capacity of 48 thousands birds.

c) Availability of Hides / Skins and Slaughter House Wastes

As per Punjab Development Statistics 2011, 2,71,200 animals were slaughtered in recognized / un-recognized slaughter houses in the district during the year 2009-10, which is a reasonable estimate of the availability of hides and skins in the district.

The availability of slaughter house by - products is estimated as under:-

Blood	100.07 M.Tons
Bones	471.34 M.Tons
Tallow	89.50 M.Tons

d) Production of Wool

The sheep population of 168 thousand heads in the district is expected to yield about 168 M.Tons of coarse wool annually.

3.4 ORES AND MINERALS

a) Reserves

District Chakwal is very rich in mineral resources. Mineral reserves like Limestone, Coal, Rock salt, Argillaceous clay, Gypsum, Dolomite, Bentonite and Iron ore are being commercially exploited by the private and public sector agencies.

b) Major Minerals

Production of the major minerals for the period 2008-09 to 2010-11 is given in Table-8.

TABLE-8

**Production of Minerals
(2008-09 to 2010-11)**

Mineral	Production (Th. M.Tons)		
	2008-09	2009-10	2010-11
Limestone	7516087	7665031	33874
Coal	253976	254981	298506
Rock salt	549889	549689	492506
Argillaceous clay	2168862	220334	2229723
Gypsum	156511	129499	55243
Dolomite	51760	18109	5572
Bentonite	4416	4365	3120
Iron ore	22240	15160	970

Source: Directorate General of Mines & Minerals, Punjab

c) Industrial uses of Minerals

The industrial uses of major minerals are given hereunder:-

Limestone	=	Cement, Sugar, Soda Ash and Lime Plaster.
Argillaceous Clay	=	Cement Industry.
Coal	=	Brick Kiln and Thermal Power Generation.
Rock Salt	=	Used as raw material in the manufacturing of:- i) Sodium Hydroxide. ii) Sodium Bicarbonate. iii) Sodium Carbonate.
Gypsum	=	Plaster of paris, cement, chemicals and soil conditioning.
Dolomite	=	Refractories.
Iron Ore	=	Steel Milling
Bentonite	=	Oil Well Drilling

CHAPTER - IV

INFRASTRUCTURAL FACILITIES

4.1 COMMUNICATION NETWORK

a) Road Links

The district has a total metalled road-length of 2730 Kilometres. The District is linked with Rawalpindi, Attock, Mianwali, Khushab and Jhelum districts through metalled road.

The Lahore Islamabad Motorway is linking in this District from Lahore to Rawalpindi at 200 Km to 250 Km. The interchange of Kallar Kahar and Balkasar are located in this District.

b) Rail Links

There is no major rail link in the district.

4.2 GENERAL QUALITY AND AVAILABILITY OF SUB-SOIL WATER

Under ground water resources are not adequate in the district except in towns of Kalar Kahar and Choa Saidu Shah. The sub soil water at these places is suitable for industrial purposes. Most of the other parts of the district are deficient in underground water resources.

4.3 EFFLUENT DISPOSAL FACILITIES

There are a number of natural nullahs in the district, which are considered sufficient for the disposal of effluent. However, the prior approval from Irrigation & Power Department is necessary for the disposal of effluent in these nullahs.

4.4 POWER SUPPLY

There are 7 grid stations in the district ranging in capacity from 66 KV to 132 KV in the district.

4.5 NATURAL GAS AVAILABILITY

At present natural gas is available in Chakwal Town, Choa Saiden Shah and Talagang Tehsils.

4.6 TELE-COMMUNICATION FACILITIES

There are 63 telephone exchanges operating in the district, ranging in total capacities 50728 lines in which working are 28203. Cellular phone services are available in the district.

4.7 SOCIAL INFRA-STRUCTURAL FACILITIES

Social infra-structural facilities available in the district are given in Table - 9.

TABLE - 9

SOCIAL INFRA-STRUCTURAL FACILITIES

Tehsil	Primary / Middle / high / higher secondary School	College	Hospital	Police station	Railway stations	Post office	Banks
Chakwal	615	6	3	5	0	31	78
Talagang	503	3	1	4	0	34	33
Choa Saiden Shah	108	2	1	1	0	14	9
Kallar Kahar	167	1	-	1	0	8	8
Total:	1393	12	5	11	0	87	128

Source: Punjab Development Statistics 2011 / Respective District Offices.

4.8 INDUSTRIAL ESTATE

Punjab Small Industries Corporation has established an industrial estate in Chakwal.

The overall position regarding allotted and vacant plots in the Estate is given in Table-10.

TABLE - 10**SIZES AND AVAILABILITY OF PLOTS IN THE INDUSTRIAL ESTATE**

Name of Industrial Estate	Size of Plots (Acres)	Total No. of Plots	Allotted Plots	Vacant Plots
Mini Industrial Estate, Chakwal Rawalpindi Road	2 Kanals	17	16	1
	1 Kanals	51	50	1
	½ Kanals	51	50	1

Source: Punjab Small Industries Corporation (PSIC)

4.9 DRY PORT

There is no dry port in the district.

4.10 INDUSTRIAL POLICY

- Foreign investors are permitted to hold 100% of the equity of industrial projects without any permission of the Government.
- No prior Government sanction is required for establishment of an industry outside Ex-Municipal Territorial Limits of Town Committees / Municipal Corporation irrespective of its cost and size except the following covered under schedule 'C':-
 - a. Arms & Ammunition.
 - b. Security Printing Currency & Mint.
 - c. High Explosives.
 - d. Radio Active Substances.
 - e. Alcoholic Beverages or Liquors.

1. No industrial unit mentioned in Schedule-A of the notification No. AEA-III-4-3-9/91, dated 30.09.2002 or industrial unit exceeding a total cost of Rs. 100.00 million shall be set up within 10 miles (16 Kms) of international border:

List of Manufacturing Industries

- a) Basic Metal Industry.
- b) Petro-Chemical Industries (Excluding Products Industries).
- c) Large size Machine Tool Factories (Limit of Investment to be determined).
- d) Heavy Foundry Works.
- e) Heavy Electric Complexes.
- f) Heavy Mechanical Complexes.
- g) Electronics Industries.
- h) Major Vehicle Assembly Plants.
- i) Ordnance Factories.
- j) Explosives, Nitric acid and Sulphuric acid plants.
- k) Vehicular Tires and Tubes Industries.
- l) Locomotives and Railway Carriage manufacturing plants.
- m) Government Mint.
- n) Security Printing Press involved in whole time printing of sensitive documents / currency notes.
- o) Manufacture of optical glass and optics.
- p) Nickle cadmium battery industries.
- q) Nuclear / Separation Plants.
- r) Large Power Generating Stations.

- s) Large oil Storage units.
 - t) Oil refineries.
2. No industrial unit shall be set up in areas affected by flood flowing transversely in the strip of one mile of either side across the Grand Trunk Road from Shahdara Town to Muridke Town, without prior permission of the Provincial Government.
 3. According to the notification No. AEA-III-3-5/2003 (Vol-III), dated 06.12.2006, “no new sugar mill shall be setup and no enlargement in capacity of the existing sugar mills is allowed in the Province”.
 4. Each district Government may declare “negative area” for industry. Such “negative area” be determined by a District Committee after consultation with all stake-holders in light of general policy guidelines issued by the Industries, Commerce & Investment Department and exemptions allowed under Schedule ‘B’ of this Notification as under:

List of Service Industries

- a) Furniture (excluding Band Saw) and also excluding storing Timber / Wood.
- b) Tailoring/ Readymade garments.
- c) Laundry / Dry Cleaning.
- d) Bakery (excluding confectionery).
- e) Syrups (excluding squashes)

- f) Cosmetics.
- g) Service workshop.
- h) Cereal Products like vermicilles.
- i) Candles making.
- j) Printing and Packaging.
- k) Hand loom carpet weaving.
- l) Hotels.
- m) Bidi manufacturing.
- n) Handmade shoes / shoe repairing workshop.
- o) Spooling and thread balls.
- p) Small Hosiery units employing not more than 10 workers.
- q) Atta Chakkies.
- r) Installation of Chaff cutters.
- s) Cotton Grading.
- t) Other small industrial undertakings which do not fall under the Sixth schedule of the Punjab Local Government Ordinance, 2001.

“Other small industrial undertakings” would mean an industrial undertaking in which the total fixed assets (including the cost of land) do not exceed Rs.1.0 million (Rupees one million).

5. No industrial unit mentioned in Schedule ‘C’ of this Notification shall be set up anywhere in the Punjab without prior approval of the Government.
6. The Government reserves the right to refuse establishment / enhancement of any industrial

undertaking which is in contravention of the public interest, ecology or any other law / rules for the time being in force.

7. The Government may relax any of the provisions of this notification in case of a particular unit or industry or class of units or industries.
8. NOC from Environment Protection Department, Govt. of the Punjab is required for setting up new Industries.
 - Tourism has been given the status of industry in accordance with Ministry of Industries & Production Circular No. 1-129/99-INV-IV dated 2nd August 1999.
 - The Housing and Construction Sector has also been declared as industry (Finance Division Notification No. 10(10)/IF-11/98, dated 07.04.1999 and 04.06.1999.
 - In accordance with Government notification No. 3(2)/97-INV-IV dated 05.05.1997, Computer Software and Information Technology (IT) have been declared as Industry.

4.11 DECLARATION OF NEGATIVE AREAS

In pursuance of the Clause 4 of the Location Policy notified on 30-09-2002, by the Industries, Commerce & Investment Department, Government of the Punjab, the District Govt. Chakwal has declared the following negative areas:-

1. No industrial unit or trade organization can be established without the prior permission of the District Government, Chakwal falling in negative area such as:-
 - a) Small, medium and heavy industries within the jurisdiction of old Municipal Limits of Chakwal City which comprise Union councils No. 1, 2, 3, 4 and 5.
 - b) Former Municipal Limits of Talagang Town (Union Council Sharq and Gharb and Villages Tehi, Akwal, Malikwal and Nakkah Kahut.
 - c) Flood affected areas of villages of Tehsil Talagang such as Dhoke Pathen Muthrala, Datwal, Murkhal, Dhok abakki Surali, Kotehra, Jabbi Shah Dilawar, shah Muhammad Wali, Chaki shah Jee.
 - d) Area fallen under jurisdiction of Union Council, Choa Saiden Shah viz:-
 - i) Along the road on the either side starting from Choa Saiden Shah Town to

Sarac Chowk along Choa Saiden Shah road up to five kilometers.

- ii) Along the road on either side starting from Choa saiden shah town from (Choa Saiden Shah Chowk) to Katas up to five kilometres on Choa Saiden Shah Kallar Khahar road.
2. The area falling in the district within the radius of half kilometre on either side from the Motorway and 220 feet on either side on metalled roads.
 3. The dangerous and offensive articles and trades detailed at page No.161 of the Punjab Local Government Ordinance 2001.
 4. The Area effecting on receipt of restrictions or embargo imposed by the Federal Government or Punjab Provincial Government issued from time to time.

The applications for the establishment of industries and trades detailed in the Punjab Local Government Ordinance 2001 shall be submitted to the Enterprise and Investment Promotion Department for scrutiny and onward submission to the competent authority.

4.12 DECLARATION OF SPECIFIED POSITIVE AREAS

Vide the Finance Act, 2008, the Government of Pakistan has enacted a new section “23A” in the Income Tax Ordinance 2001. The Section “23A” is reproduced below:-

“First year allowance.- (1) Plant, Machinery and equipment installed by any industrial undertaking setup in specified rural and under developed areas, and owned and managed by a company shall be allowed first year allowance in lieu of initial allowance under Section 23 at the rate specified in Part II of the third schedule against the cost of the “eligible depreciable assets” put to use after July 1st,2008.

(2) The provision of Section 23 except sub-sections (1) and (2), thereof, shall mutatis mutandis apply.

The Federal Government may notify “Specified areas” for the purpose of sub-section(1)”

In pursuance of the above mentioned notification District Government Chakwal has identified and approved whole of area of the District as positive specified area except already notified area.

4.13 INCENTIVES FOR INVESTORS TO SETUP A UNIT IN EPZs

- a) According to EPZs Authorities, following incentives are available in the Export Processing Zones
1. 100% Ownership rights.
 2. 100% Repatriation of capital & Profits.
 3. No minimum or maximum limit for investment.
 4. Duty free imports of machinery, equipment & material.
 5. No sales tax on input goods including electricity & gas bills.
 6. Obsolete/old machinery can be sold in domestic market of Pakistan after payment of applicable duties & taxes.
 7. Freedom from National import restrictions.
 8. Foreign Exchange control regulation of Pakistan not applicable.
 9. Defective goods/waste can be sold in domestic market after payment of applicable duties, maximum upto 3% of total value of export.
 10. Duty free vehicle allowed under certain conditions. After 5 years of use, vehicles can be disposed off in domestic market on payment of duty on depreciated value.

11. Domestic market of Pakistan available on same conditions as for imports from other countries.
 12. Units operating in EPZs can undertake sub-contracting for units of tariff area subject to payment of duty and taxes on value addition only.
 13. Only EPZA is authorized to collect Presumptive tax at the time of export of goods which would be final tax liability.
 14. EPZ units allowed to supply goods to Custom manufacturing bonds.
 15. Production oriented labour laws to be solely regulated by the Authority.
 16. EPZ manufacturer will be treated at par with bonded manufacturers in tariff area for any future incentives to be announced for exporters.
 17. Relief from double taxation subject to bilateral agreement.
- b) Facilities to Investors for setting up a unit in EPZs of Pakistan.
1. One window service and simplified procedure.
 2. All infrastructural facilities like water, electricity, gas, telex, fax and telecommunication system are made available by EPZA.
 3. Skilled & un-skilled labour available in abundance.

4. Sub-contracting without limit on variety and quantity is allowed outside the zone as well as within the zone.
5. The garment manufacturing units located in Export Processing Zones are eligible to participate in auction of quotas.
6. GSP concessions given by various countries to imports from Pakistan are available to the manufacturers in the zone.
7. Peaceful, secure and environmentally protected / pollution free work area.
8. Inter-unit transfer of finished goods among exporting units allowed.

4.14 PAKISTAN'S INVESTMENT POLICY - KEY FEATURES

General

- The investment policy is liberal and business friendly as it has been designed in consultation with businessmen, investors and representative forums as well as the Multinational Companies (MNCs).
- It provides equal investment opportunities for both domestic and foreign investors.
- All economic sectors open for FDI (Foreign Direct Investment).
- 100% foreign equity allowed.
- No government sanction required.

- Foreign investment on repatriable basis is allowed in all economic sector including manufacturing, agriculture, services, infrastructure and social sectors.
- Foreign investment in Agriculture projects allowed on joint-venture basis by associating minimum local equity of 40%.
- Remittance of Royalty, Technical & Franchise Fee, Capital, Profits, Dividends allowed.
- Minimum foreign equity for non-manufacturing including services sector has been reduced from \$ 0.3 to \$ 0.15 million. In Agriculture, infrastructure and social sectors, it is \$ 0.3 million.

Tariff and Tax Incentives

- To keep Pakistan competitive in international tariff 5% customs duty has been allowed on import of plant and machinery which is not manufactured locally.
- Sales Tax 0% across the board.
- 0% duty on import of raw material for export industry.
- 0% duty on import of agriculture machinery.
- Tax relief in shape of Initial Depreciation Allowance (IDA) has been provided as 50% of machinery cost across the board.
- Tax relief has also been provided for expansion and Balancing, Modernization & Replacement (BMR) in existing industries.

Policy Package of Pakistan

Policy Parameters	Mfg. Sector	Non-Manufacturing Sectors		
		Agriculture	Infrastructure & Social	Services including IT & Telecom Services
Govt. Permission	Not required except for specified industries*	Not required except specific licences from concerned agencies.		
Remittance of capital, profits, dividends, etc.	Allowed	Allowed		
Upper Limit of foreign equity allowed	100%	100%	100%	100%
Minimum Investment Amount (M \$)	No	0.3	0.3	0.15
Customs duty on import of PME**	5%	0%	5%	0-5%
Tax relief (IDA***, % of PME cost)	50%	50%		
Royalty & Technical Fee	No restriction for payment of royalty & technical fee.	Initial lump-sum up to \$100,000 Max Rate 5% of net sales - Initial period 5 years		

* Specified Industries:

- i) Arms and ammunitions
- ii) High Explosives

- iii) Radioactive substances
- iv) Security Printing
- v) Currency and mint

** PME = Plant, Machinery and Equipment

*** IDA = Initial Depreciation Allowance

4.15 INDUSTRIAL FINANCING FACILITIES

Following Financial Institutions in the country are providing various types of fixed investment industrial financing in the foreign and local currency to the industrial sector for establishment of new industrial units as well as for Expansion, Balancing, Modernization and Replacement (BMR) of existing industrial units within the frame-work of industrial/financial policies of the Government of Pakistan.

- 1 AlBaraka Bank (Pakistan) Limited.
- 2 Allied Bank Limited.
- 3 Askari Bank Limited.
- 4 Bank Alfalah Limited.
- 5 Bank Al-Habib Limited.
- 6 Bank Islami Pakistan Limited.
- 7 Barclays Bank PLC.
- 8 Burj Bank Limited.
- 9 Citi Bank N.A.
- 10 Deutsche Bank A.G.

- 11 Dubai Islamic Bank Pakistan Limited.
- 12 Faysal Bank Limited.
- 13 First Women Bank Limited.
- 14 Habib Bank Limited.
- 15 Habib Metropolitan Bank Limited.
- 16 HSBC Bank Middle East Limited.
- 17 Industrial and Commercial Bank of China
- 18 Industrial Development Bank of Pakistan.
- 19 JS Bank Limited.
- 20 KASB Bank Limited.
- 21 MCB Bank Limited.
- 22 Meezan Bank Limited.
- 23 National Bank of Pakistan.
- 24 NIB Bank Limited.
- 25 Oman International Bank S.A.O.G.
- 26 S.M.E. Bank Limited.
- 27 Samba Bank Limited
- 28 Silk Bank Limited.
- 29 Sindh Bank Limited.
- 30 Soneri Bank Limited.
- 31 Standard Chartered Bank (Pakistan)
Limited.
- 32 Summit Bank Limited
- 33 The Bank of Khyber
- 34 The Bank of Punjab
- 35 The Bank of Tokyo-Mitsubishi Limited.

- 36 The Punjab Provincial Cooperative Bank Limited.
- 37 United Bank Limited.
- 38 Zarai Taraqiati Bank Limited.

Source: State Bank of Pakistan

List of Development Financial Institutions (DFIs)

- 1 Bankers Equity Limited.
- 2 House Building Finance Company Limited.
- 3 Pak Brunei Investment Company Limited
- 4 Pak-China Investment Company Limited.
- 5 Pak Oman Investment Company Limited.
- 6 PAIR Investment Company Limited.
- 7 Pakistan Kuwait Investment Company Limited.
- 8 Pak-Libya Holding Company Limited.
- 9 Saudi Pak Industrial & Agricultural Investment Company Limited.

Source: State Bank of Pakistan

Besides the financial institutions mentioned above a number of Leasing Companies, Modaraba Companies, Investment Banks are also providing financing facilities to the industrial sector. Punjab Small Industries Corporation also extends financial assistance to the small/cottage industrial units.

4.16 SALIENT FEATURES OF LOANING SCHEME OF PSIC

Punjab Small Industries Corporation (PSIC) is a body corporate enacted in 1973. One of core functions of PSIC is financial assistance programme for prospective entrepreneurs, skilled youth, artisans and craftsmen all over the Punjab. The priority sectors are as under:

- Service Industries.
- Agro / Agro Support Industries.
- Food Processing Industries.
- Export Oriented Industries.
- Import Substitution Industries.
- Information Technology (IT) Project.
- Handicraft Industry.
- Women Enterprises.

PSIC started credit assistance programme during 1984 and completed 13 schemes up till now. An amount of Rs. 4079 Million has been disbursed to 19,580 entrepreneurs in 36 Districts of Punjab with the recovery rate of 88% that indicates proper utilization of loans.

The maximum loan limit is Rs.3 Million with debit equity ratio of 60:40. The credit assistance facility available for new projects, BMR and Working Capital. The markup rate varies from 0% to 12%.

The repayment period of loan is from 3 years to 6 years with grace period of 3 months to 6 months.

Recently, Government of Punjab has provided an amount of Rs. 2000 Million for disbursement through Service Provider Organization i.e. M/s Akhuwat to un-employed and skilled persons of PVTC, TEVTA, SANATZAR's of Social Welfare Department or other unemployed youth having good business plan.

Up till now, M/s Akhuwat has disbursed an amount of Rs. 1650.00 Million to 94,960 poor household in 33 vocations with average loan size of Rs. 17,382 in Punjab through its 142 offices in 30 districts of the Punjab.

To promote the traditional handicrafts in Punjab, PSIC has also launched dedicated credit assistance schemes for the craftsmen at subsidized markup rates. These craftsmen have also been provided marketing facilities through Pakistan Handicrafts Shops.

4.17 SALIENT FEATURES OF THE SEZ BILL 2012

The Law of SEZ has been made to meet the global challenges of competitiveness to attract FDI. The Law/bill will allow to create industrial clusters with liberal incentives, infrastructure, investor facilitation services to enhance productivity and reduce cost of doing business for economic

development and poverty reduction. The Law further envisages to reduce processes through SEZ in Pakistan. The establishment of SEZs will attract both domestic as well as international investors. The SEZ would play a pivotal role in the economic development of Pakistan as has been witnessed in case of China, Malaysia, Thailand and other states.

It extends to the whole of Pakistan and overrides other laws (anything contrary);

- All SEZ whether Public, Public-Private or Private-Private to be governed under this Act;
- The Board of Approval (BOA) headed by the Prime Minister of Pakistan with the Minister for Finance as the Vice Chairman shall meet as frequently as required but not less than twice a year and decisions shall be taken by a majority of the total membership present and voting;
- SEZs will have exemption from customs duties & taxes for all Capital Goods imported into Pakistan for the development , operations and maintenance of a SEZ;
- Exemption from all taxes on income accruable in relation to the development and operations of the SEZ for a period of ten years, starting from the date of signing of the Development Agreement.
- Zone Enterprises have exemption from custom duties etc. on imports of Capital Goods;

- Exemption from taxes on income for a period of 10 years starting from the date the Development certifies that the Zone Enterprise has commenced commercial operations in the relevant SEZ;

There is no limit to the economic potential of Pakistan. The challenge is to create the enabling environment in which this can be realized. Special Economic zones bill is a step towards the economic stability in the country.

4.18 STRATEGIC TRADE POLICY FRAME WORK (2012-2015)

The government unveiled on 29 January, 2013 a medium term (2012-2015) Strategic Trade Policy Framework, setting a cumulative export target of \$95 billion for three years. The framework, the second announced by the federal government will be implemented with a funding of Rs. 26.14 billion. In the first year, Rs.5 billion will be spent on providing subsidies and support to identified sectors.

The focus of the policy is on promoting regional trade and regulatory efficiency, promoting agro-processed exports, increasing exports from less developed regions, revamping export promotion agencies, increasing green exports, enhancing role of women in exports and pursuing product and market development and diversification.

The salient features of the policy include institutional interventions, export development initiatives and regulatory amendments. The policy, offers cash assistance to 14 sectors along with 19 regulatory frameworks, including ban on products as a protective measure against environmental and health hazards. The new framework is designed to provide assistance only to the non-textile sectors.

Institutional Measures: The government will setup institutions like an Export-Import (Exim) Bank, Pakistan Land Port Authority; Leather Export Promotion Council and a Services Trade Development Council.

Export Development: Major initiatives in the Policy included allowing mark-up rate support of two per cent on prevailing LTFF for future import and purchase of machinery. An allocation of Rs.500 million has been proposed for schemes to be implemented this year. The total amount to be spent in three years is projected at Rs.3 billion. A mark-up support of 1.5% will be provided on export finance scheme (EFS) to selected sectors at a cost of Rs. 1.25 billion, including Rs. 200 million in 2012-2013.

The sectors for EFS support are fish and fish preparations, fruit and vegetables, spices, meat and meat preparations, carpets and rugs, sports

goods, footwear, leather products, surgical goods, cutlery, onyx products, pharmaceuticals, electric fans, transport equipment, electrical machinery, specialized machinery, furniture, handicrafts and computer-related services.

An amount of Rs.14 billion will be given as adhoc relief at three per cent of FoB to offset the impact of higher cost of utilities for exporters in selected sectors. The measure will cost Rs.3bn this year. An amount of Rs.2 billion-Rs125 million will be allocated for marketing development assistance for regional countries.

A Rs. 25 million allocation has been proposed for export promotion campaigns for agro-processed products; Rs. 400 million for encouraging opening of retail outlets; and Rs.400m for subsidizing 50% cost of plant and machinery for establishing processing plants for meat, fruits, vegetables, dates and olives in Azad Jammu and Kashmir, Baluchistan, Gilgit - Baltistan and Khyber Pakhtunkhwa.

An amount of Rs.30 million will be allocated for upgrading rice inspection laboratories, Rs. 20 million for subsidy at 100% of the prevailing mark-up rate for establishing mining and processing units in Khyber Pakhtunkhwa and Baluchistan.

Another Rs.20 million has been allocated for strengthening women's chamber of commerce and

industry, Rs.32 million for setting up a resource management cell at the ministry of commerce, Rs.28 million for establishing leather export promotion council and Rs.70 million for services export development council.

Regulatory Measures

Unrestricted import of used motorized wheelchairs and five-year-old used or second-hand ambulances has been allowed. Two per cent of export proceeds will be allowed to manufacturers-cum-exporters for duty-free import of accessories for value-addition for leather garments and made-ups. Import of non-hazardous plastic scrap has been allowed for industrial consumers for use as raw material. A ban has been imposed on import of plastic waste, hospital waste, used sewerage pipes and chemical containers.

Import of non-sterilized surgical needles and syringes will be restricted to industrial units, condition of Euro-II may be made applicable on import of all types of specialized vehicles, such as crane-mounted lorries, dump trucks and mixtures lorries. The import of used sprinkle lorries will be restricted to a maximum of five year old. All goods from banned list imported in commercial quality shall be allowed to re-export at importer/shipping lines cost. The imported substandard goods from the restricted list should be destroyed within a period of six months without offering any release.

Import of waste and scrape of tyres in completely shredded/ cut form will only be allowed to industrial consumers; domestic standards will equally apply to imported goods as well.

Construction engineering and electrical companies will be allowed to retain abroad the exported machinery to carry out work on export-cum-import basis with the condition that they will import the same on the conclusion of the contract against indemnity bond.

All exporters of edible products are to be registered and export of vegetable ghee and cooking oil will be allowed in packaging of up to 25kg to encourage value-addition.

Steps to contain Environmental & Health Hazards

- Ban on import of plastic waste/scrap-hospital waste, used sewerage pipes and chemical containers.
- Restricting import of non-sterilized surgical needles and syringes to industrial units.
- Only the more fuel efficient Euro-II category crane-mounted lorries, dump trucks, mixture lorries, etc, will be imported.
- Imported used tyres will only be allowed for industrial use.

Institutions to be Setup

- Export-Import Bank.
- Pakistan Land Port Authority.
- Leather Export Promotion Council.
- Service Trade Development Council.

CHAPTER - V

EXISTING PATTERN OF INDUSTRIAL DEVELOPMENT

5.1 DESCRIPTION OF EXISTING INDUSTRIES

There are about 27 large, medium and some small industrial units in the district. Industry-wise installed capacity of major industrial units is given in Table-11.

TABLE-11

Industry-wise Installed Capacity

Sr. #	Industry	No. of units	Annual Installed Capacity
1	Agricultural Implements	4	3400 Nos.
2	Cement	4	7500 Th. M.Tons
3	Ceramics Products	1	30000 Nos.
4	Cold Storage	10	184000 Bags
5	Flour Mills	5	720 M.Tons/ Day
6	Poultry Feed	1	97500 M.Tons
7	Textile Spinning	6	184136 Spindles
8	Tobacco	1	47250 Th. Nos.

Source: District Officer (E&IP), Chakwal.

Note: For further details visit: www.doi.pitb.gov.pk

CHAPTER - VI

FUTURE INDUSTRIAL POTENTIAL

Keeping in view the availability of raw material, skilled labour, linkage between the industrial units, local / national / international demand, future industrial potential of district Chakwal is discussed hereunder:

It would, however, be kept in mind that though the above mentioned factors facilitate the success of any industrial unit, yet the entire success depends upon the investors / entrepreneurs and the capabilities of the personnel having the managerial control because any of these factors, if lacking is manageable. Therefore, it is advisable that detailed feasibility of industrial projects must be carried out before making final decision for investment.

6.1 AGRICULTURE

Main crops of district Chakwal are wheat, groundnut, Jawar, Bajra and Gram the average annual production of which during the period 2008-11 was 125.48, 21, 7.7, 5.8 and 6.7 thousand M.Tons respectively (Chapter 3, Section 3.1).

There are five flour mills in the district having combined capacity of 720 M.Tons per day i.e. 216000 M.Tons per annum (720 M.Tons x 300

Days), which does not reflect scope of additional flour mills.

Groundnut also possesses industrial potential. Peanut oil / butter manufacturing and processing / roasting / packing units have very good prospects.

6.2 LIVESTOCK

As per Punjab Development Statistics 2011, the population of cattle, buffaloes, sheep and goats was 527, 169, 168 and 666 thousand heads respectively.

As regards poultry population there are 1500 broilers, 260 layers and 6 breeding poultry farms in the district having rearing capacity of 52500, 1400 and 48 thousand birds respectively.

The annual availability of hides and skins is estimated at 271200 thousand pieces (Chapter 3, Section 3.3).

In view of proximity to Rawalpindi and Islamabad cities, there exist very good prospects for dairy farms, dairy products, cattle/goats/sheep fattening farms, hatchery / breeding poultry farms, tannery, poultry / cattle feed mills, leather footwear and leather products manufacturing units.

6.3 MINERAL

District Chakwal is quite rich in minerals. Argillaceous Clay, Coal, Dolomite, Gypsum, Limestone, Rock Salt, Bentonite and Iron Ore are commercially excavated in the district (Chapter 3, Section 3.4), but no end-user industry exists in the district.

In district Chakwal there exists bright scope / prospects for a Gypsum processing, Dolomite processing, Cooling / Iodised / Pharmaceutical Grade / Table Salt units.

After a detailed study, a Coal based power-generating unit soda ash and ceramic tableware units can also be established in the district.

6.4 INDUSTRY

Though Cotton is not grown in the district Chakwal but there are six textile-spinning units out of which three units also manufacture Polyester/Viscose Yarn. This reflects very good prospects for textile weaving and processing, hosiery, terry towels, bed sheets and sizing units.

6.5 DEMAND BASED INDUSTRIES

In view of the local requirements and existing industrial pattern , there exists good scope for

Cold Storage, PVC Pipes, Plastic Household Products, Electrical Accessories, Laundry Soap, Packing Boxes, Steel Furniture, Plastic Ropes, RCC Slabs/Girders, etc.

6.6 LIST OF IDENTIFIED PROJECTS

As per discussion given in Section 6.1 to 6.5, the following projects are identified for investment in district Chakwal:-

- Agriculture Waste / by products raw material based industries for maximization of value addition chain.
- Bed Sheets
- Ceramic Tableware
- Cold Storage
- Cattle/Sheep/Goats Fattening Farm
- Cooling/Iodinized/Table/Pharmaceutical Grade Salt
- Dairy Farms
- Dairy Products
- Dolomite Processing
- Energy conservation / efficiency
- Electrical Accessories
- Flour Mills
- Gypsum Processing
- Hatchery/Breeding Poultry Farms
- Hosiery
- Laundry Soap
- Leather Footwear
- Leather Products

-
- Poultry / Cattle Feed Mills
 - PVC Pipes
 - Packing Boxes
 - Plastic Ropes
 - Peanut Oil/Butter
 - Plastic Household Products
 - Peanut Processing/Roasting/Packing
 - Power generation through coal and other alternate fuels
 - Power generation through bagasse
 - RCC Slabs/Girders
 - Sizing Units
 - Steel Furniture
 - Terry-Towel
 - Textile Weaving/Processing
 - Refractories
 - Steel Fabrication
 - Tannery
 - Textile Weaving
 - Waste heat recovery systems

Directory of Industrial Establishments, Chakwal

Sr. No.	Name / Address of unit	Phone No. / Website	Industry	Estb. Year	Investment (Th.Rs.)	Emp	Product	Annual Installed Capacity
1	Awan Engineering Works, Chakwal Road, Dhudial	590050, 590150	Agricultural Implements	1981	200	8	Agricultural Implements	1000 Nos.
2	Imran Engineering Works, Rawalpindi Road, Dhudial	590031	Agricultural Implements	1982	150	5	Agricultural Implements	800 Nos.
3	Javaid Brothers Engineering Works, Dhudial	590082	Agricultural Implements	1984	200	6	Agricultural Implements	1000 Nos.
4	Malik Engineering Works, Chakwal Road, Dhudial	590137	Agricultural Implements	1980	200	5	Agricultural Implements	600 Nos.
5	Bestway Cement Ltd (Unit No.2), Tatral, Tehsil Choa Saiden Shah	584560, 051-2654856	Cement	2008	6300000	400	Cement	1800 Th. M.Tons
6	Bestway Cement Ltd. (Unit No.1), Tatral, Tehsil Choa Saiden Shah	584560, 051-2654856	Cement	2005	6500000	600	Cement	1800 Th. M.Tons
7	D.G. Khan Cement Co. Ltd., Khairpur, Tehsil Kallar Kahar	042-6367812, 111-113-333	Cement	2005	10500000	500	Cement	2100 Th. M.Tons
8	Pakistan Cement Co. Ltd., Mauza Karooli, Near Kallar Kahar	051-2817135-44	Cement	1993	12000000	600	Cement	1800 Th. M.Tons

Sr. No.	Name / Address of unit	Phone No. / Website	Industry	Estb. Year	Investment (Th.Rs.)	Emp	Product	Annual Installed Capacity
9	Chakwal Cold Storage (Pvt) Ltd., Talagang Road	552065	Cold Storage	2001	5000	7	Vegetables / Fruits	40000 Bags
10	Subhan Allah Cold Storage, Rawalpindi Road	598300	Cold Storage	2001	6000	8	Vegetables / Fruits	75000 Bags
11	Al-Mumtaz Flour Mills, Bhaun Road	571372	Flour Mills	2007	1000	10	Flour	120 M.Tons/Day
12	Chakwal Flour Mills, Sargodha Road	541450	Flour Mills	1997	20000	12	Flour	200 M.Tons/Day
13	Faisal Flour Mills, 4-Km Sargodha Road	540840	Flour Mills	1991	8000	10	Flour	120 M.Tons/Day
14	Haqani Flour Mills (Pvt) Ltd., S.I.E. Chakwal	550264	Flour Mills	2000	20000	15	Flour	160 M.Tons/Day
15	Noor-Ud-Din Flour & General Mills, Kot Qazi, Pindi Road, Talagang	0543-480100	Flour Mills	1998	8000	10	Flour	120 M.Tons/Day
16	Chakwal Poultry Breeding Farm And Hatchery, 11-Mc Plaza First Floor, Talagang Road	551279	Hatchery	1993	5000	C	Chicks	1600000 Nos.
17	Kahut Hatchery, 8-Km Bhaun Road	571372	Hatchery	1995	9000	C	Chicks	300000 Nos.
18	Pak National Poultry / Breeding Bhaun Road	540758-9	Hatchery	1989	3500	C	Chicks	1000000 Nos.

Sr. No.	Name / Address of unit	Phone No. / Website	Industry	Estb. Year	Investment (Th.Rs.)	Emp	Product	Annual Installed Capacity
19	Naveed Industries (Pvt) Ltd. Bhaun Road		Plastic Products	1976	500	C	Plastic Shoes	200000 Pairs
20	Chakwal Feeds (Pvt) Ltd, Bhaun Road	552805	Poultry Feed	1992	18360	C	Poultry Feed	97500 M.Tons
21	Al-Qadir Textile Mill Limited, Village Dab, Jhelum Road	540831-3	Textile Spinning	1986	788607	600	Cotton Yarn	37296 Spindles
22	Al-Qaim Textile Mills Ltd. 25 K.M. Talagang Rd	551436, 540575	Textile Spinning	1986	74530	C	Cotton Yarn	14400 Spindles
23	Chakwal Textile Mills Limited, Aminabad, Rawalpindi Road	598122, 042-5757108	Textile Spinning	1979	20000	600	Pc Yarn	20772 Spindles
24	Kohinoor Spinning Mills Ltd.Aminabad, Rawalpindi Rd	644254, 6442181	Textile Spinning	1972	261462	1400	Cotton Yarn / Polyester	31128 Spindles
25	Kohinoor Spinning Mills Ltd. (Unit No.ii), Yousaf Nagar, Bhaun Road	0333-5552003, 042-5757108	Textile Spinning	1991	774000	1400	Cotton Yarn	28880 Spindles
26	Rizwan Textile Mills Ltd; 8 Km., Jhelum Road	540025, 051-2874544, 2273318-9	Textile Spinning	1990	774000	913	Cotton Yarn	51660 Spindles
27	Central Tobacco Co. (Pvt) Ltd., Rawalpindi Road	552068	Tobacco	1999	1289507	18	Cigarette	47250 Th. Nos.

Source: Directorate of Industries, Punjab

LIST OF CONTACT NUMBERS

Directorate of Industries Punjab

Designation	Contact
Director Industries, Punjab	Tel: +92 (42)-99211520-1 Fax: +92 (42)-99211522 dipunjab@gmail.com
Additional Director Industries	Tel: +92 (42)-99211531 +92 (42)-99212752 Fax: +92 (42)-99212753
Joint Director (Development)	Tel: +92 (42)-99211526
Senior Economist	Tel: +92 (42)-99211533
Staff Economist	Tel: +92 (42)-99211534
Deputy Director (Admin)	Tel: +92 (42)-99211528
Deputy Director (Development)	Tel: +92 (42)-99211528
Deputy Director (Planning)	Tel: +92 (42)-99211530
Assistant Director (Admin)	Tel: +92 (42)-99211529
Assistant Director (Planning)	Tel: +92 (42)-99211530
Assistant Director (Statistics)	Tel: +92 (42)-99211524
Assistant Registrar	Tel: +92 (42)-99211523
Librarian	Tel: +92 (42)-99213010
District Officer (E&IP), Chakwal	Tel: +92 (543)-540642

Other Relevant Departments

Department	Contact
Secretary, Industries, Commerce & Investment Department, Govt. of the Punjab	Tel: +92 (42) 99210534-5 Fax: +92 (42) 99210536
Punjab Board of Investment & Trade (PBIT)	Tel: +92 (42) 99205201 info@pbit.gop.pk
Small & Medium Enterprises Development Authority (SMEDA)	Tel: +92(42)-111-111-456 Fax: +92 (42) 36304926-7 info@smeda.org.pk
Punjab Industrial Estates Development and Management Company (PIEDMC)	Tel: +92 (42) 35297203-6 Fax: +92 (42) 35297207 info@pie.com.pk
Punjab Small Industries Corporation (PSIC)	Tel: +92 (42) 99200453

BIBLIOGRAPHY

- Punjab Development Statistics 2011, Bureau of Statistics, Government of the Punjab
- The Urban Unit, Planning & Development Department, Government of the Punjab.
- Technical Education and Vocational Training Authority
- Chief Inspector of Boilers, Directorate of Industries, Punjab
- Directorate of Agriculture, Crop Reporting Service, Punjab
- Chief Conservator of Forest Planning, Monitoring and Evaluation, Punjab
- Directorate General (Ext), Livestock & Dairy Development Punjab
- Directorate General Mines & Minerals, Punjab
- Punjab Small Industries Corporation
- Punjab Industrial Estates Development and Management Company
- Faisalabad Industrial Estates Development and Management Company
- Industries, Commerce & Investment Department, Government of the Punjab
- District Officers (Enterprise & Investment Promotion) as well as District Administration
- Export Processing Zones Authority
- Board of Investment, Government of Pakistan
- Website of Stat Bank of Pakistan
- Ministry of Commerce, Government of Pakistan
- Directory of Industrial Establishments Punjab, Directorate of Industries, Punjab

