

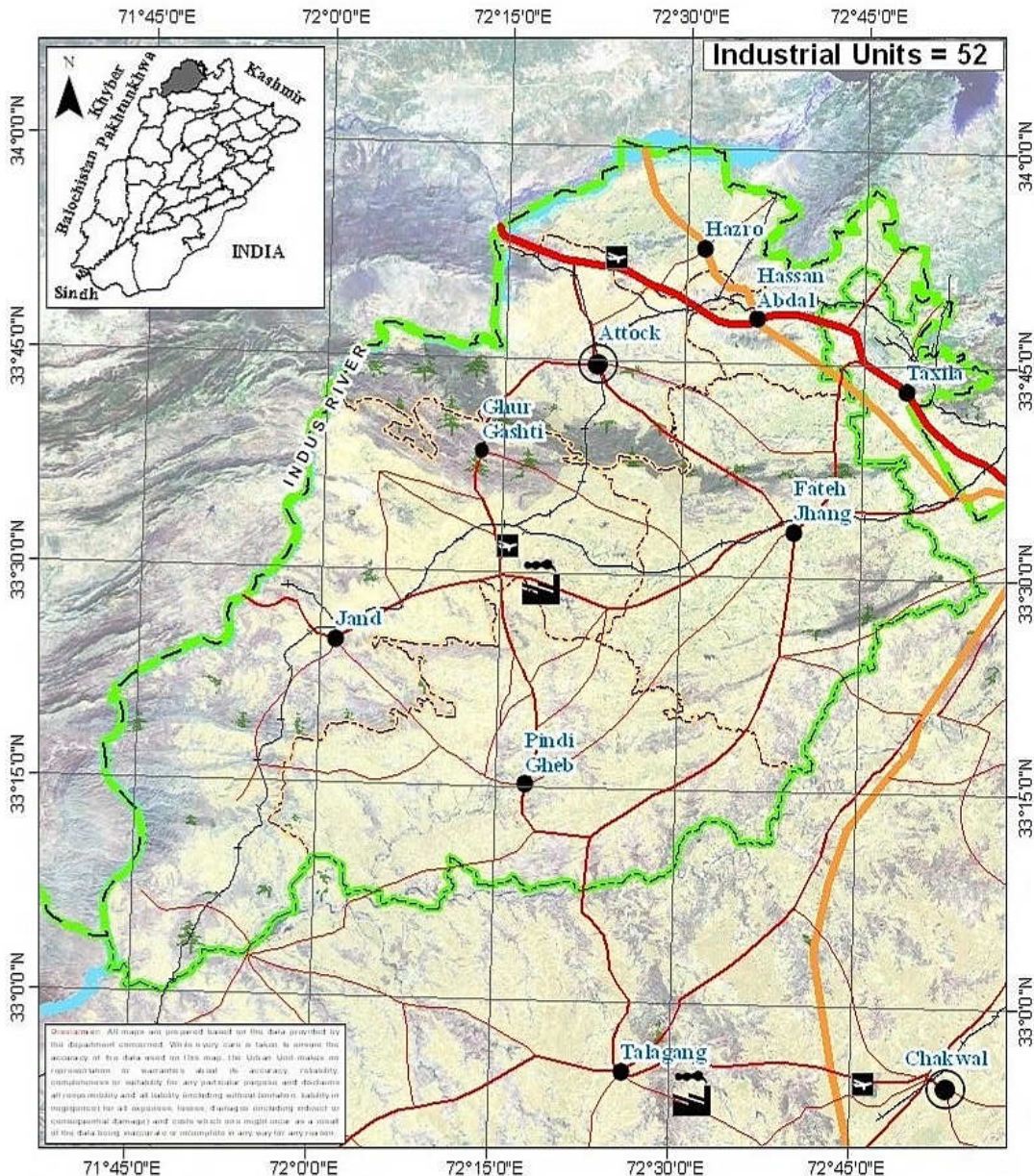
District Pre-Investment Study - 2012

Attock



Directorate of Industries, Punjab
Poonch House, Multan Road, Lahore.

District Attock



Map No.: ATK-01 **Date:** 21-01-2013

Scale: 1:1,325,000

0 12.5 25

Kilometers

THE URBAN UNIT

Urban Unit, Islamabad, Pakistan

Legend

Administrative:	Transportation:	Landuse:
Provincial Boundary	Motorway	River
District Boundary	Provincial Highway	Agricultural Land
Tehsil Boundary	Primary Road	Forest
Divisional Headquarter	Intercity Road	Industrial Estate
District Headquarter	Pakistan Railway	
Tehsil Headquarter	Airport	

Director's Message

After spending past two years in Directorate of Industries, Punjab, I feel very privileged to be writing this message as Director Industries, Punjab.



This is the time we publish the 7th edition of the District Pre-Investment Studies of 36 Districts of Punjab, which has now become synonymous with our commitment to helping Industrialists, new entrepreneurs as well as Researchers. As Director Industries Punjab, I have seen much change, like:

- Relocation plan for the industrial units located within residential areas to industrial estates / positive areas declared by the District Governments.
- Adaptation of Boilers & Pressure Vessels Ordinance 2002.
- Conduct of Census of Manufacturing Industries.
- A scheme "Improvement and Up-gradation of Boilers Inspection Wing" has been approved by the Planning & Development Department, Government of the Punjab with the cost of Rs.10 Million.
- A Scheme "Sports Goods and Material Testing Laboratory" is under process in Planning & Development Department, Government of the Punjab. The estimated cost of the scheme is Rs.450 Million.
- The proposal for Capacity Building of Directorate of Industries Punjab is under process in Industries, Commerce & Investment Department, Government of the Punjab with the estimated cost of Rs.109.75 Million.
- We launch our website www.doi.pitb.gov.pk.

Looking ahead, we are focused on accelerating the execution of growth and promote industrial investment in the province. I am incredibly excited about this and truly believe the best of time for industrial investment is yet to come, Insha Allah.

(Muhammad Siddique Sheikh)
Director Industries, Punjab

Preface

Pre-investment studies for the districts in the Punjab were first published by the Directorate of Industries and Mineral Development, Punjab in the year 1979, with the prime objective of providing data which might interest private entrepreneurs and the framers of the Provincial and National Strategies in the industrial sector.

The second, third, fourth, fifth and sixth series of Pre-investment Studies for all districts of Punjab were published in 1983, 1992, 2002, 2006 and 2009 respectively. The present edition is seventh in the series.

This study basically updates the information contained in sixth series of district pre-investment studies. Efforts have been made to provide latest information collected through published sources, offices of the respective Government Departments/Agencies and District Offices of Industries Department. Quality addition of Industrial Policy Framework, recently promulgated Special Economic Zone Act 2012, Strategic Trade Policy Framework (2012-15) and Digital Maps by Urban Unit has improved these studies significantly.

The information has been updated in respect of population, manpower, production of agriculture crops, fruits, vegetables, livestock, forest resources, ores/minerals, infrastructural facilities such as technical/vocational training facilities, communication net-work, sub-soil water quality/effluent disposal

facilities, power/gas supply, tele-communication facilities, industrial estates, dry ports, industrial financing facilities, loaning scheme of PSIC, industrial policy, investment policy, fiscal incentives, Special Economic Zone Act 2012 and Strategic Trade Policy Framework (2012-15) etc. New policy measures regarding declaration of negative and specified positive areas have also been incorporated.

The study also includes information regarding existing industrial pattern, industry wise installed capacities and details regarding existing major industrial units in each district.

Effort has been made to identify various industries considering the availability of raw materials, skilled labour, linkage between industrial units and local/national/international demand. The suggested industries are, however, merely of indicative nature and it is advisable that prospective investors should conduct detailed feasibility report before making final decision for investment.

It is worthwhile to mention that industrial sector in Punjab has grown gradually from 6,223 industrial units in 1975 to 17,857 industrial undertakings in 2010. Sectoral growth has also been registered, resulting in substantial value addition. Value addition chain can be maximized by processing the agricultural industrial waste like rice husk, cotton stock, maize and corn cob. Herbal products is another untapped area. Live Stock, Dairy Development and poultry are fast growing sectors. Processing of food products can fetch handsome dividends. Currently information technology sector is growing by 39% annually in Pakistan. Fashion

industry is also developing rapidly. Similarly, chemical sector has lot to offer by utilizing the available mineral resources as raw material.

Issue of energy shortage can be addressed by dealing with power generation as an industry. Local as well as foreign investors have golden opportunity to set up power generation stations based on coal and other alternate fuels, under the captive power plants policy allowed in the newly promulgated SEZ Act, 2012. Punjab offers very good opportunity to the local as well as foreign investors to set up small, medium and heavy industries in variety of sectors. It has a growing market of over 90 million consumers, abundant manpower / labour force and cheap raw material with reasonably controlled law & order.

The Industries, Commerce & Investment Department has sufficient institutional frame work of attached and autonomous bodies to look after the industrial issues. Directorate of Industries, Small Industries Corporation (PSIC), Board of Investment (PBIT), Punjab Industrial Estates Development and Management Company (PIEDMC), Faisalabad Industrial Estates Development and Management Company (FIEDMC) have blend of professionals from the public as well as private sector. These legal entities are working in close coordination with the Chambers of Commerce and Industries systematically to promote industrialization and trade.

Development schemes regarding establishment of Industrial Resource Centre at the Directorate of Industries, setting up Sports & Material Testing Lab at EPZ, Sambrial and Industrial Safety Institute are under consideration with the Planning and Development

Department. Completion of these schemes will definitely help in promotion of industrialization process with enhanced industrial safety.

I must record my appreciation to Mr. Muhammad Akram Awan, Senior Economist, who effectively planned, coordinated and provided the guidance to his team members for completion of this study. Credit also goes to Mr. Muhammad Jamil Chishty, Staff Economist for his dedicated support rendered in the completion process of this study and Mr. Waseem Haider, Stenographer, for his tireless typing and composition work on computer.

I am grateful to all the District Officers, Enterprise & Investment Promotion who provided the relevant information of their respective districts for incorporating in pre-investment studies. I am also thankful to various Provincial Departments for supplying the required data to the Directorate of Industries. My special thanks are due to Dr. Nasir Javed, Project Director, Urban Unit for the provision of digital maps and the Punjab Printing Press.

Any suggestion for the improvement of the study will be welcomed.

Dec. 31, 2012

(Muhammad Siddique Sheikh)
Director Industries, Punjab

Contents

Section	Page
District at a Glance	1
1. Geographical Conditions	3
1.1 Brief Description of the District	3
1.2 Climate and General Soil Conditions	4
2. Man-Power	5
2.1 Total Population of the District	5
2.2 Man-Power Availability	6
2.3 Traditional Crafts	9
2.4 Geographical Indications	10
3. Natural Resources	11
3.1 Agriculture	11
a) Main Crops	11
b) Main Fruits	12
c) Main Vegetables	12
3.2 Forests	13
a) Location of Forests and Area under Afforestation	13
b) Production of Timber and Fire-wood	14
3.3 Livestock Population	14
a) Animal Population	14
b) Poultry Population	15
c) Availability of Hides/Skins & Slaughter House Wastes	15
d) Production of Wool	15
3.4 Ores and Minerals	16
a) Reserves	16
b) Major Minerals	16
c) Industrial Uses of Minerals	17

4. Infrastructural Facilities	19
4.1 Communication Network	19
a) Road Links	19
b) Rail Links	19
4.2 General Quality and Availability of Sub Soil Water	19
4.3 Effluent Disposal Facilities	20
4.4 Power Supply	20
4.5 Natural Gas Availability	20
4.6 Telecommunication Facilities	20
4.7 Social Infrastructural Facilities	21
4.8 Industrial Estates	21
4.9 Dry Port	22
4.10 Industrial Policy	22
4.11 Declaration of Negative Areas	26
4.12 Declaration of Positive Areas	27
4.13 Incentives for Investors to set a unit in EPZs	29
4.14 Pakistan’s Investment Policy – Key Features	32
4.15 Industrial Financing Facilities	34
4.16 Salient Features of Loaning Scheme of PSIC	37
4.17 Salient Features of the SEZ Bill 2012	39
4.18 Strategic Trade Policy Frame Work (2012-2015)	40
5. Existing Pattern of Industrial Development	47
5.1 Description of Existing Industry	47
6. Future Industrial Potential	49
6.1 Agriculture	49
6.2 Livestock	50
6.3 Mineral	50
6.4 Industry	51
6.5 Demand Based Industries	51
6.6 List of Identified Projects	52

Annex

Directory of Industrial Establishments	55
List of Contact Nos.	61
Bibliography	63

DISTRICT AT A GLANCE

1	Population (000 Numbers)	:	1,583
2	Area (Square Kilometres)	:	6,857
3	Population Density (per sq. km.)	:	231
4	Tehsils / Towns	:	Attock, Fateh Jang, Jand, Pindi Gheb, Hazro and Hassanabdal.
5	Main Crops	:	Wheat, Ground Nut and Maize.
6	Main Fruits	:	Citrus, Guava and Apricot.
7	Main Vegetables	:	Potato, Cauliflower, Onion and Garlic.
8	Forest Resources (Area in Acres)	:	1,79,947.27
9	Mineral Resources	:	Argillaceous Clay, Bentonite, Fireclay, Limestone and Iron Ore, Latrite.
10	Total Metalled Roads (KM)	:	2,100.83
11	No. of Grid Stations	:	12
12	No. of Telephone Exchanges	:	36
13	Number of Industrial Units (Large Medium and Some Small Selected Sectors)	:	52

-
- 14 Type of Industrial Units : Carpets, Cement, Cold Storage, Flour Mills, Food Products, Glass & Glass Products, Iron & Steel Re-Rolling, Light Engineering, Motors /Pumps, Packages, Poultry Feed, Power Generation, Textile Spinning, Vegetable Ghee & Cooking Oil and Woollen Textile Spinning /Weaving

CHAPTER - I

GEOGRAPHICAL CONDITIONS

1.1 BRIEF DESCRIPTION OF THE DISTRICT

Attock district was constituted in 1904 by taking Talagang Tehsil from Jhelum district and Pindigheb, Fatehjang and Attock tehsils from Rawalpindi district. The district was named as Campbellpur after the name of Sir Campbell who laid foundation stone of Campbellpur City in 1908 a few kilometres away on south-east of Attock Khurd Town. The name Attock was again given to it in 1978.

District Attock is bounded on the north by Swabi and Haripur districts of NWFP, on the East by Rawalpindi, on the South by Chakwal district, on the South-West by Mianwali district, in the West by Kohat district and on North-west by Nowshera district of NWFP. The Indus River flows along the western boundary of the district for about 130 Kilometers. It divides Attock district from the three bordering districts of NWFP.

Attock district is spread over an area of 6,857 Square Kilometers and comprises the six tehsils of:

- i) Attock
- ii) Jand
- iii) Fateh Jang

- iv) Pindi Gheb
- v) Hazro
- vi) Hassanabdal

Attock is the district and Tehsil headquarters. Jand, Fateh Jang, Hassanabdal, Pindi Gheb and Hazro are the other Tehsil headquarters. Khaur, Kamra and Sanjwal are the other important towns and markets of the district. There are 349 villages, 7 Towns / Cities and three cantonments in the district.

1.2 CLIMATE AND GENERAL SOIL CONDITIONS

District Attock has extreme hot and cold climate. The maximum temperature touches 40°C. The Northern part is more humid with comparatively moderate climate as compared to Southern part of the district. The land mainly comprises hills, plateaus and dissected plains with river Indus flowing on Western and Northern sides of the district while river Haro coming from Haripur passes through the Attock Tehsil on the North of Kala Chitta Range. The area North of River Haro is a flood plain with fertile soil. The average annual rainfall in the district is 783 mm.

CHAPTER - II

MAN POWER

2.1 TOTAL POPULATION OF THE DISTRICT

According to Punjab Development Statistics 2011, total population of Attock district is 1,583 thousands persons out of which 791.5 thousands are males and 791.5 thousands are females. Density of population in the district is 231 persons per square Kilometre.

Tehsil wise distribution of Urban and Rural population is given in Table-1

TABLE-1

Town-Wise Distribution of Urban & Rural Population

Town	Population (Thousand Nos.)		
	Urban	Rural	Total
Attock	146	188	334
Jand	22	255	277
Fateh Jang	32	232	264
Pindi Gheb	37	196	233
Hazro	52	253	305
Hassanabdal	47	123	170
Total	336	1247	1583

Source: Punjab Development Statistics, 2011

2.2 MAN POWER AVAILABILITY

As regards availability of skilled labour, there are 14 technical / commercial / vocational institutions (9 for men and 5 for women) imparting training in various trades e.g. computer, mechanical, electrical, auto-engineering, welding, wood working and commerce. Vocational institutions for women impart training in hand/machine embroidery, Vocational Diploma, Tailoring, stitching and knitting etc. In all about 2,574 trained technicians/artisans/workers are turning out every year. Details are given in Table-2.

TABLE - 2

Commercial and Technical Institutions

Sr #	Name & Description of Commercial / Technical Training Institutions	Types of Training Courses Offered	Duration of Course	Average No of Students Enrolled / Session
For Men				
1	Government College of Commerce, Fateh Jang Road, Attock	B.Com, D.Com	24 Months	404
2	Government Institute of Commerce, Mohallah Haji Bazar, Jand.	D.Com	24 Months	65

3	Government Institute of Commerce, Khaur Road, Pindi Gheb	D.Com	24 Months	162
4	Government Technical Training Institute, Rawalpindi Road, Pindi Gheb.	Ref. & AC, Auto Mechanic, Draftsman, Electrician, Fitter, General.	12 Months	103
5	Govt. Technical Training Institute, Kamra Road, Teen Meela More, Attock	Auto, Machinist, Radio/ TV and General Mechanic	6 to 12 Months	199
6	Govt. Technical Training Center (ABAD), Attock Road, Fateh Jang.	Electrician, Welder, Tailoring, Motor Winding, Auto & Farm	12 Months	47
7	Govt. Technical Training Center, Mohallah Arshad Nagar, Street No.1, Peshawar Road, Hassan Abdal.	Welder, Wood Work, Auto & Farm Machinery, Electrician, Wiring Technician	6 Months	15
8	Govt. Technical Training Center (ABAD), Kohat Road, Jand	Electrical, Welding, Auto & Farm, Motor Winding, Electronics Applications (Radio/ TV)	12 Months	47

9	Govt. College of Technology, Fateh Jang Road, Attock.	Auto Diesel, Mechanical, Electrical, Electronics, Computer Information Technology, DAE Microsoft IT Academy	3 to 36 Months	1029
For Women				
10	Government Vocational Training Institute, Near DCO House, Attock.	Vocational Diploma, Tailoring, Beautician, Hand Embroidery, Fabric Printing, Certificate in Computer Application	6 to 24 Months	163
11	Govt. Vocational Training Institute, Rawalpindi Road, Pindi Gheb	Vocational Diploma	6 to 24 Months	101
12	Govt. Vocational Training Institute, Mohallah Takia, Jand	Vocational Diploma, Machine Embroidery, Beautician, Certificate in Computer Application.	6 to 24 Months	73

13	Government Vocational Training Institute, GVTI, Railway Road, House No. B-VII-499, Fateh Jang	Tailoring, Vocational Diploma, Hand Embroidery, Fabrics Printing, Certificate in Computer Application.	6 to 24 Months	76
14	Government Vocational Training Institute, Captain Islam Shaheed Road, Hassanabdal, Fateh Jang	Vocational Diploma, Machine Embroidery, Tailoring, Beautician,	6 to 24 Months	90

Source: TEVTA

2.3 TRADITIONAL CRAFTS

The traditional crafts of the district Attock include embroidered shoes, painted and lacquered wood work, calico printing, hand loom cloth and blankets.

Attock and Pindi Gheb produce elegant zari embroidered shoes. Pindi Gheb is also famous for lacquer wood work, toys and legs of bridal beds. Calico printing of bed sheets, table covers and similar articles are done at Fateh Jang. Iron vessels are made at Mukhad and blankets are manufactured in Pindi Gheb and Fateh Jang tehsils.

2.4 GEOGRAPHICAL INDICATIONS

The Project Director (Geographical Indications), Industries, Commerce & Investment Department, Government of the Punjab has identified that there is no Geographical Indications in the district.

CHAPTER - III

NATURAL RESOURCES

3.1 AGRICULTURE

a) Main Crops

Wheat, Ground Nut and Maize are the main crops grown in the district. Production of these crops during the period 2008-09 to 2010-11 is given in Table - 3.

TABLE-3

**Production of Main Crops
(2008-09 to 2010-11)**

Crop	Production (Th. M.Tons)		
	2008-09	2009-10	2010-11
Wheat	274.59	143.11	252.65
Ground Nut	--	10.34	9.59
Maize	17.3	12.3	18.1

Source: Directorate of Agriculture, Crop Reporting Service, Punjab

Besides, Jawar, Sugarcane, Bajra, Moong, Mash, Masoor, Gram and Oil Seed such as Rape / Mustard are also grown in minor quantities in the district.

b) Main Fruits

Citrus, Guava and Apricot are main fruits grown in the district. Production of these fruits during the period 2008-09 to 2010-11 is given in Table - 4

TABLE-4

**Production of Main Fruits
(2008-09 to 2010-11)**

Fruit	Production (M.Tons)		
	2008-09	2009-10	2010-11
Citrus	4365	4669	4802
Guava	307	284	297
Apricot	148	146	148

Source: Directorate of Agriculture, Crop Reporting Service, Punjab

Besides, Banana is also grown in minor quantity in the district.

c) Main Vegetables

Potato, Cauliflower, Onion and Garlic are main vegetables grown in the district. Production of these vegetables during the period 2008-09 to 2010-11 is given in Table - 5

TABLE-5

**Production of Main Vegetables
(2008-09 to 2010-11)**

Vegetable	Production (M.Tons)		
	2008-09	2009-10	2010-11
Potato	12660	13443	14170
Cauliflower	5885	5981	6159
Onion	2751	3135	3079
Garlic	1236	1229	1183

Source: Directorate of Agriculture, Crop Reporting Service, Punjab

Besides, Brinjal, Bottle Gourd, Ladyfinger, Turnip, Carrot, Peas, Tomato and Chillies are also grown in the district in minor quantities.

3.2 FORESTS

a) Location of Forests and Area under Afforestation

An area of 179947.27 Acres is under forests, which is about 10.63 % of the total area of the district. There is also linear plantation of 681 Km alongside the roads/rails/canals in the district. Trees grown in the area are kau, phalai, kikar and shisham.

b) Production of Timber and Firewood

The production of Timber and Fire-Wood in the district during the period 2008-09 to 2010-11 is given in Table 6.

TABLE-6

**Production of Timber & Firewood
(2008-09 to 2010-11)**

Year	Production (Cubic Meter)	
	Timber	Firewood
2008-09	322	--
2009-10	403	--
2010-11	--	--

Source: Forestry, Wildlife and Fisheries Department

3.3 LIVESTOCK POPULATION

a) Animal Population

The animal population of the district is given in Table - 7.

TABLE - 7

ANIMAL POPULATION

Animals	Population (Th Heads)
Goats	721
Cattle	767
Sheep	192
Buffaloes	141

Source: Livestock & Dairy Development Department.

b) Poultry Population

As per Punjab Development Statistics 2011 there are 375 broiler and 40 layer poultry farms in the district having rearing capacity of 3220 and 106 thousand birds respectively.

c) Availability of Hides / Skins and Slaughter House Wastes

As per Punjab Development Statistics 2011, 162000 animals were slaughtered in recognized / un-recognized slaughter houses in the district during the year 2009-10, which is a reasonable estimate of the availability of hides and skins in the district.

The availability of slaughter house by - products is estimated as under:-

Blood	62.53 M.Tons
Bones	287.06 M.Tons
Tallow	50.71 M.Tons

d) Production of Wool

The sheep population of 192 thousand heads in the district is expected to yield about 192 M.Tons of coarse wool annually.

3.4 ORES AND MINERALS

a) Reserves

Kala Chitta Range in district Attock is rich in mineral resources. Minerals reserves like Argillaceous Clay, Bentonite, Fireclay, Limestone and Iron Ore have been reported in this range, where only Dolomite, Gypsum, Limestone, Fireclay, Bentonite, Silica Sand and Iron Ore are being commercially exploited.

b) Major Minerals

Production of the major minerals for the period 2008-09 to 2010-11 is given in Table-8.

TABLE-8

**Production of Minerals
(2008-09 to 2010-11)**

Mineral	Production (Th. M.Tons)		
	2008-09	2009-10	2010-11
Limestone	1728134	1729530	494129
Argillaceous Clay	457513	454690	481950
Latrite	23765	23008	34910
Bentonite	1969	4560	3232
Iron Ore	390	300	4670
Fireclay	246	452	140

Source: Directorate General of Mines & Minerals, Punjab

c) Industrial uses of Minerals

The industrial uses of major minerals are given hereunder:-

Argillaceous Clay	=	Cement
Bentonite	=	Extracting/Drilling of Oil Wells, Soap, Cosmetics, etc.
Fireclay	=	Fire Bricks, Refractories, Electric Insulations, Ceramics, etc.
Iron Ore	=	Extraction of Iron, etc.
Limestone	=	Cement, Sugar, Soda Ash, Building / Road Construction, etc.
Latrite	=	Steel Industry, Cement, etc.

CHAPTER - IV

INFRASTRUCTURAL FACILITIES

4.1 COMMUNICATION NETWORK

a) Road Links

The district has a total metalled road-length of 2100.83 Kilometres. The District is linked with Rawalpindi, Kohat, Nowshera, Haripur, Mianwali and Chakwal districts through metalled road.

b) Rail Links

Attock, Basal, and Jand are the major Rail heads in the district. The district is linked with Rawalpindi, Mianwali, Noshera, Kohat and Peshawar Districts through railway net-work.

4.2 GENERAL QUALITY AND AVAILABILITY OF SUB-SOIL WATER

Under ground water resources are generally not adequate except at Hazro, Hassanabdal, Jand, Basal and adjoining areas where tube-wells have been installed.

4.3 EFFLUENT DISPOSAL FACILITIES

River Haro which flows through the district in the vicinity of Lawrencepur, Burhan, and Attock could be used for disposal of effluent after pre-treatment to remove harmful ingredients and with prior written permission from Irrigation and Power Department, Government of the Punjab and Environment Protection Department as well.

4.4 POWER SUPPLY

There are 12 grid stations in the district ranging in capacity from 66 KV to 220 KV in the district.

4.5 NATURAL GAS AVAILABILITY

Natural gas is available in Attock, Hassanabdal, Pindi Gheb, Jand, Fateh Jang and Hazro.

4.6 TELE-COMMUNICATION FACILITIES

There are 36 telephone exchanges operating in the district, ranging in capacities from 50 lines to 40790 lines. There are also 21 DSLAM exchanges operating in the district with 8,156 capacity. At present 6295 DSL working in the district. Cellular phone services are available in the district.

4.7 SOCIAL INFRA-STRUCTURAL FACILITIES

Social infra-structural facilities available in the district are given in Table - 9.

TABLE - 9

SOCIAL INFRA-STRUCTURAL FACILITIES

Tehsil	Primary / Middle / high / higher secondary School	College	Hospital	Police station	Railway stations	Post office	Banks
Attock	181	2	3	2	6	14	17
Hazro	162	2	1	3	-		27
Hassan-abdal	122	1	1	2	2	22	7
Fateh Jang	307	3	1	3	4		10
Pindi Gheb	259	2	1	2	--	17	8
Jand	329	4	2	2	13	27	12
Total:	1360	14	9	14	25	80	81

Source: Punjab Development Statistics 2011 / Respective District Offices.

There is also Comsat University Campus approved by the Higher Education Commission and University of Education Campus Charter by the Punjab Government established in Attock City.

4.8 INDUSTRIAL ESTATE

At present there is no industrial estate in the district.

4.9 DRY PORT

There is no dry port in the district.

4.10 INDUSTRIAL POLICY

- Foreign investors are permitted to hold 100% of the equity of industrial projects without any permission of the Government.
 - No prior Government sanction is required for establishment of an industry outside Ex-Municipal Territorial Limits of Town Committees / Municipal Corporation irrespective of its cost and size except the following covered under schedule 'C':-
 - a. Arms & Ammunition.
 - b. Security Printing Currency & Mint.
 - c. High Explosives.
 - d. Radio Active Substances.
 - e. Alcoholic Beverages or Liquors.
1. No industrial unit mentioned in Schedule-A of the notification No. AEA-III-4-3-9/91, dated 30.09.2002 or industrial unit exceeding a total cost of Rs. 100.00 million shall be set up within 10 miles (16 Kms) of international border:

List of Manufacturing Industries

- a) Basic Metal Industry.

- b) Petro-Chemical Industries (Excluding Products Industries).
 - c) Large size Machine Tool Factories (Limit of Investment to be determined).
 - d) Heavy Foundry Works.
 - e) Heavy Electric Complexes.
 - f) Heavy Mechanical Complexes.
 - g) Electronics Industries.
 - h) Major Vehicle Assembly Plants.
 - i) Ordinance Factories.
 - j) Explosives, Nitric acid and Sulphuric acid plants.
 - k) Vehicular Tires and Tubes Industries.
 - l) Locomotives and Railway Carriage manufacturing plants.
 - m) Government Mint.
 - n) Security Printing Press involved in whole time printing of sensitive documents / currency notes.
 - o) Manufacture of optical glass and optics.
 - p) Nickle cadmium battery industries.
 - q) Nuclear / Separation Plants.
 - r) Large Power Generating Stations.
 - s) Large oil Storage units.
 - t) Oil refineries.
2. No industrial unit shall be set up in areas affected by flood flowing transversely in the strip of one mile of either side across the Grand Trunk Road from Shahdara Town to Muridke Town, without prior permission of the Provincial Government.

3. According to the notification No. AEA-III-3-5/2003 (Vol-III), dated 06.12.2006, “no new sugar mill shall be setup and no enlargement in capacity of the existing sugar mills is allowed in the Province”.
4. Each district Government may declare “negative area” for industry. Such “negative area” be determined by a District Committee after consultation with all stake-holders in light of general policy guidelines issued by the Industries, Commerce & Investment Department and exemptions allowed under Schedule ‘B’ of this Notification as under:

List of Service Industries

- a) Furniture (excluding Band Saw) and also excluding storing Timber / Wood.
- b) Tailoring/ Readymade garments.
- c) Laundry / Dry Cleaning.
- d) Bakery (excluding confectionery).
- e) Syrups (excluding squashes)
- f) Cosmetics.
- g) Service workshop.
- h) Cereal Products like vermicilles.
- i) Candles making.
- j) Printing and Packaging.
- k) Hand loom carpet weaving.
- l) Hotels.
- m) Bidi manufacturing.
- n) Handmade shoes / shoe repairing workshop.

- o) Spooling and thread balls.
- p) Small Hosiery units employing not more than 10 workers.
- q) Atta Chakkies.
- r) Installation of Chaff cutters.
- s) Cotton Grading.
- t) Other small industrial undertakings which do not fall under the Sixth schedule of the Punjab Local Government Ordinance, 2001.

“Other small industrial undertakings” would mean an industrial undertaking in which the total fixed assets (including the cost of land) do not exceed Rs.1.0 million (Rupees one million).

5. No industrial unit mentioned in Schedule ‘C’ of this Notification shall be set up anywhere in the Punjab without prior approval of the Government.
6. The Government reserves the right to refuse establishment / enhancement of any industrial undertaking which is in contravention of the public interest, ecology or any other law / rules for the time being in force.
7. The Government may relax any of the provisions of this notification in case of a particular unit or industry or class of units or industries.

8. NOC from Environment Protection Department, Govt. of the Punjab is required for setting up new Industries.
 - Tourism has been given the status of industry in accordance with Ministry of Industries & Production Circular No. 1-129/99-INV-IV dated 2nd August 1999.
 - The Housing and Construction Sector has also been declared as industry (Finance Division Notification No. 10(10)/IF-11/98, dated 07.04.1999 and 04.06.1999.
 - In accordance with Government notification No. 3(2)/97-INV-IV dated 05.05.1997, Computer Software and Information Technology (IT) have been declared as Industry.

4.11 DECLARATION OF NEGATIVE AREAS

In pursuance of the Clause 4 of the Location Policy notified on 30-09-2002, by the Industries, Commerce & Investment Department, Government of the Punjab, the District Govt. Attock has declared the following negative areas:-

- a. Kala-Chitta Reserved Forest Area and
 - i. Five thousand meters in the northern direction of forest boundary,

- ii. In the southern direction, three thousand meters distance from the forest boundary up to Road Turnaul - Fatehjang, till Fateh Jang city and while excluding the city up to River Indus in the west, five thousand meters boundary,
 - iii. In the eastern direction easting 90°, up to Motorway (M-I) will be limit, and
 - iv. In the west River Indus will be the limit.
- b. The area with the radius of 5 km from the former Municipal limits of urban area.
 - c. All the area within the radius of 5 km distance of strategic area and installations in the District.
 - d. The area within right of way 220 ft from the G.T. Road on either side.
 - e. All area within the territory of Cantonment in the District.

4.12 DECLARATION OF SPECIFIED POSITIVE AREAS

Vide the Finance Act, 2008, the Government of Pakistan has enacted a new section “23A” in the Income Tax Ordinance 2001. The Section “23A” is reproduced below:-

“First year allowance.- (1) Plant, Machinery and equipment installed by any industrial undertaking setup in specified rural and under developed areas, and owned and managed by a company shall be allowed first year allowance in lieu of initial allowance under Section 23 at the rate specified in Part II of the third schedule against the cost of the “eligible depreciable assets” put to use after July 1st,2008.

(2) The provision of Section 23 except sub-sections (1) and (2), thereof, shall mutatis mutandis apply.

The Federal Government may notify “Specified areas” for the purpose of sub-section(1)”

In pursuance of the above mentioned notification District Government Attock has identified and approved the following specified positive areas for setting up industrial undertakings:-

Attock	On both sides of the G.T Road from Hattian to Tool Plaza near Harro Bridge.(About 09 KM).
--------	-------------------------------------------------------------------------------------------

Hazro	Area on right sides of Hazro-Tarbela Road (About 10 KM) upto village Gourghushti.
Hassanabdal	On both sides of G.T Road from village Katcha to Harro Bridge (About 10 KM.)
Fateh Jang	On both sides of Fateh Jang, Khaur Road from Dhok Syedaan to village Dhurnal (About 20 Km).
Pindi Gheb	a) On both sides of Fateh Jang, Dhullian Chowk to Nothian Malkan (About 25KM). b) On both sides of Pindigheb-Basal Road from village Ikhlas to village Kisran (About 20 Km).
Jand	On both sides of the Kohat-Rawalpindi Road from village Rangli to Basal Chowk (About 10 KM).

4.13 INCENTIVES FOR INVESTORS TO SETUP A UNIT IN EPZs

- a) According to EPZs Authorities, following incentives are available in the Export Processing Zones
1. 100% ownership rights.
 2. 100% repatriation of capital & profits.
 3. No minimum or maximum limit for investment.

4. Duty free imports of machinery, equipment & material.
5. No sales tax on input goods including electricity & gas bills.
6. Obsolete/old machinery can be sold in domestic market of Pakistan after payment of applicable duties & taxes.
7. Freedom from national import restrictions.
8. Foreign exchange control regulation of Pakistan not applicable.
9. Defective goods/waste can be sold in domestic market after payment of applicable duties, maximum upto 3% of total value of export.
10. Duty free vehicle allowed under certain conditions. After 5 years of use, vehicles can be disposed off in domestic market on payment of duty on depreciated value.
11. Domestic market of Pakistan available on same conditions as for imports from other countries.
12. Units operating in EPZs can undertake sub-contracting for units of tariff area subject to payment of duty and taxes on value addition only.
13. Only EPZA is authorized to collect Presumptive tax at the time of export of goods which would be final tax liability.
14. EPZ units allowed to supply goods to Custom manufacturing bonds.

15. Production oriented labour laws to be solely regulated by the Authority.
 16. EPZ manufacturer will be treated at par with bonded manufacturers in tariff area for any future incentives to be announced for exporters.
 17. Relief from double taxation subject to bilateral agreement.
- b) Facilities to Investors for setting up a unit in EPZs of Pakistan.
1. One window service and simplified procedure.
 2. All infrastructural facilities like water, electricity, gas, telex, fax and telecommunication system are made available by EPZA.
 3. Skilled & un-skilled labour available in abundance.
 4. Sub-contracting without limit on variety and quantity is allowed outside the zone as well as within the zone.
 5. The garment manufacturing units located in Export Processing Zones are eligible to participate in auction of quotas.
 6. GSP concessions given by various countries to imports from Pakistan are available to the manufacturers in the zone.
 7. Peaceful, secure and environmentally protected / pollution free work area.

8. Inter-unit transfer of finished goods among exporting units allowed.

4.14 PAKISTAN'S INVESTMENT POLICY - KEY FEATURES

General

- The investment policy is liberal and business friendly as it has been designed in consultation with businessmen, investors and representative forums as well as the Multinational Companies (MNCs).
- It provides equal investment opportunities for both domestic and foreign investors.
- All economic sectors open for FDI (Foreign Direct Investment).
- 100% foreign equity allowed.
- No government sanction required.
- Foreign investment on repatriable basis is allowed in all economic sectors including manufacturing, agriculture, services, infrastructure and social sectors.
- Foreign investment in agriculture projects allowed on joint-venture basis by associating minimum local equity of 40%.
- Remittance of Royalty, Technical & Franchise Fee, Capital, Profits, Dividends allowed.
- Minimum foreign equity for non-manufacturing including services sector has been reduced from \$ 0.3 to \$ 0.15 million. In Agriculture, infrastructure and social sectors, it is \$ 0.3 million.

Tariff and Tax Incentives

- To keep Pakistan competitive in international tariff 5% customs duty has been allowed on import of plant and machinery which is not manufactured locally.
- Sales tax 0% across the board.
- 0% duty on import of raw material for export industry.
- 0% duty on import of agriculture machinery.
- Tax relief in shape of Initial Depreciation Allowance (IDA) has been provided as 50% of machinery cost across the board.
- Tax relief has also been provided for expansion and Balancing, Modernization & Replacement (BMR) in existing industries.

Policy Package of Pakistan

Policy Parameters	Mfg. Sector	Non-Manufacturing Sectors		
		Agriculture	Infrastructure & Social	Services including IT & Telecom Services
Govt. Permission	Not required except for specified industries*	Not required except specific licences from concerned agencies.		
Remittance of capital, profits, dividends, etc.	Allowed	Allowed		
Upper Limit of foreign equity allowed	100%	100%	100%	100%

Minimum Investment Amount (M \$)	No	0.3	0.3	0.15
Customs duty on import of PME**	5%	0%	5%	0-5%
Tax relief (IDA***, % of PME cost)	50%	50%		
Royalty & Technical Fee	No restriction for payment of royalty & technical fee.	Initial lump-sum up to \$100,000 Max Rate 5% of net sales - Initial period 5 years		

* Specified Industries:

- i) Arms and ammunitions
- ii) High Explosives
- iii) Radioactive substances
- iv) Security Printing
- v) Currency and mint

** PME = Plant, Machinery and Equipment

*** IDA = Initial Depreciation Allowance

4.15 INDUSTRIAL FINANCING FACILITIES

Following Financial Institutions in the country are providing various types of fixed investment industrial financing in the foreign and local currency to the industrial sector for establishment of new industrial units as well as for Expansion, Balancing, Modernization and Replacement (BMR)

of existing industrial units within the frame-work of industrial/financial policies of the Government of Pakistan.

- 1 AlBaraka Bank (Pakistan) Limited.
- 2 Allied Bank Limited.
- 3 Askari Bank Limited.
- 4 Bank Alfalah Limited.
- 5 Bank Al-Habib Limited.
- 6 Bank Islami Pakistan Limited.
- 7 Barclays Bank PLC.
- 8 Burj Bank Limited.
- 9 Citi Bank N.A.
- 10 Deutsche Bank A.G.
- 11 Dubai Islamic Bank Pakistan Limited.
- 12 Faysal Bank Limited.
- 13 First Women Bank Limited.
- 14 Habib Bank Limited.
- 15 Habib Metropolitan Bank Limited.
- 16 HSBC Bank Middle East Limited.
- 17 Industrial and Commercial Bank of China
- 18 Industrial Development Bank of Pakistan.
- 19 JS Bank Limited.
- 20 KASB Bank Limited.
- 21 MCB Bank Limited.
- 22 Meezan Bank Limited.
- 23 National Bank of Pakistan.

- 24 NIB Bank Limited.
- 25 Oman International Bank S.A.O.G.
- 26 S.M.E. Bank Limited.
- 27 Samba Bank Limited
- 28 Silk Bank Limited.
- 29 Sindh Bank Limited.
- 30 Soneri Bank Limited.
- 31 Standard Chartered Bank (Pakistan) Limited.
- 32 Summit Bank Limited
- 33 The Bank of Khyber
- 34 The Bank of Punjab
- 35 The Bank of Tokyo-Mitsubishi Limited.
- 36 The Punjab Provincial Cooperative Bank Limited.
- 37 United Bank Limited.
- 38 Zarai Taraqati Bank Limited.

Source: State Bank of Pakistan

List of Development Financial Institutions (DFIs)

- 1 Bankers Equity Limited.
- 2 House Building Finance Company Limited.
- 3 Pak Brunei Investment Company Limited
- 4 Pak-China Investment Company Limited.
- 5 Pak Oman Investment Company Limited.
- 6 PAIR Investment Company Limited.

- 7 Pakistan Kuwait Investment Company Limited.
- 8 Pak-Libya Holding Company Limited.
- 9 Saudi Pak Industrial & Agricultural Investment Company Limited.

Source: State Bank of Pakistan

Besides the financial institutions mentioned above a number of Leasing Companies, Modaraba Companies, Investment Banks are also providing financing facilities to the industrial sector. Punjab Small Industries Corporation also extends financial assistance to the small/cottage industrial units.

4.16 SALIENT FEATURES OF LOANING SCHEME OF PSIC

Punjab Small Industries Corporation (PSIC) is a body corporate enacted in 1973. One of core functions of PSIC is financial assistance programme for prospective entrepreneurs, skilled youth, artisans and craftsmen all over the Punjab. The priority sectors are as under:

- Service Industries.
- Agro / Agro Support Industries.
- Food Processing Industries.
- Export Oriented Industries.
- Import Substitution Industries.
- Information Technology (IT) Project.

- Handicraft Industry.
- Women Enterprises.

PSIC started credit assistance programme during 1984 and completed 13 schemes up till now. An amount of Rs. 4079 Million has been disbursed to 19,580 entrepreneurs in 36 Districts of Punjab with the recovery rate of 88% that indicates proper utilization of loans.

The maximum loan limit is Rs.3 Million with debit equity ratio of 60:40. The credit assistance facility available for new projects, BMR and Working Capital. The markup rate varies from 0% to 12%. The repayment period of loan is from 3 years to 6 years with grace period of 3 months to 6 months.

Recently, Government of Punjab has provided an amount of Rs. 2000 Million for disbursement through Service Provider Organization i.e. M/s Akhuwat to un-employed and skilled persons of PVTC, TEVTA, SANATZAR's of Social Welfare Department or other unemployed youth having good business plan.

Up till now, M/s Akhuwat has disbursed an amount of Rs. 1650.00 Million to 94,960 poor household in 33 vocations with average loan size of Rs. 17,382 in Punjab through its 142 offices in 30 districts of the Punjab.

To promote the traditional handicrafts in Punjab, PSIC has also launched dedicated credit assistance schemes for the craftsmen at subsidized markup rates. These craftsmen have also been provided marketing facilities through Pakistan Handicrafts Shops.

4.17 SALIENT FEATURES OF THE SEZ BILL 2012

The Law of SEZ has been made to meet the global challenges of competitiveness to attract FDI. The Law/bill will allow to create industrial clusters with liberal incentives, infrastructure, investor facilitation services to enhance productivity and reduce cost of doing business for economic development and poverty reduction. The Law further envisages to reduce processes through SEZ in Pakistan. The establishment of SEZs will attract both domestic as well as international investors. The SEZ would play a pivotal role in the economic development of Pakistan as has been witnessed in case of China, Malaysia, Thailand and other states.

It extends to the whole of Pakistan and overrides other laws (anything contrary);

- All SEZ whether Public, Public-Private or Private-Private to be governed under this Act;
- The Board of Approval (BOA) headed by the Prime Minister of Pakistan with the Minister for Finance as the Vice Chairman shall meet as

frequently as required but not less than twice a year and decisions shall be taken by a majority of the total membership present and voting;

- SEZs will have exemption from customs duties & taxes for all Capital Goods imported into Pakistan for the development , operations and maintenance of a SEZ;
- Exemption from all taxes on income accruable in relation to the development and operations of the SEZ for a period of ten years, starting from the date of signing of the Development Agreement.
- Zone Enterprises have exemption from custom duties etc. on imports of Capital Goods;
- Exemption from taxes on income for a period of 10 years starting from the date the Development certifies that the Zone Enterprise has commenced commercial operations in the relevant SEZ;

There is no limit to the economic potential of Pakistan. The challenge is to create the enabling environment in which this can be realized. Special Economic zones bill is a step towards the economic stability in the country.

4.18 STRATEGIC TRADE POLICY FRAME WORK (2012-2015)

The government unveiled on 29 January, 2013 a medium term (2012-2015) Strategic Trade Policy

Framework, setting a cumulative export target of \$95 billion for three years. The framework, the second announced by the federal government will be implemented with a funding of Rs. 26.14 billion. In the first year, Rs.5 billion will be spent on providing subsidies and support to identified sectors.

The focus of the policy is on promoting regional trade and regulatory efficiency, promoting agro-processed exports, increasing exports from less developed regions, revamping export promotion agencies, increasing green exports, enhancing role of women in exports and pursuing product and market development and diversification.

The salient features of the policy include institutional interventions, export development initiatives and regulatory amendments. The policy, offers cash assistance to 14 sectors along with 19 regulatory frameworks, including ban on products as a protective measure against environmental and health hazards. The new framework is designed to provide assistance only to the non-textile sectors.

Institutional Measures: The government will setup institutions like an Export-Import (Exim) Bank, Pakistan Land Port Authority; Leather Export Promotion Council and a Services Trade Development Council.

Export Development: Major initiatives in the Policy included allowing mark-up rate support of two per cent on prevailing LTFF for future import and purchase of machinery. An allocation of Rs.500 million has been proposed for schemes to be implemented this year. The total amount to be spent in three years is projected at Rs.3 billion. A mark-up support of 1.5% will be provided on export finance scheme (EFS) to selected sectors at a cost of Rs. 1.25 billion, including Rs. 200 million in 2012-2013.

The sectors for EFS support are fish and fish preparations, fruit and vegetables, spices, meat and meat preparations, carpets and rugs, sports goods, footwear, leather products, surgical goods, cutlery, onyx products, pharmaceuticals, electric fans, transport equipment, electrical machinery, specialized machinery, furniture, handicrafts and computer-related services.

An amount of Rs.14 billion will be given as adhoc relief at three per cent of FoB to offset the impact of higher cost of utilities for exporters in selected sectors. The measure will cost Rs.3bn this year. An amount of Rs.2 billion-Rs125 million will be allocated for marketing development assistance for regional countries.

A Rs. 25 million allocation has been proposed for export promotion campaigns for agro-processed products; Rs. 400 million for encouraging opening

of retail outlets; and Rs.400m for subsidizing 50% cost of plant and machinery for establishing processing plants for meat, fruits, vegetables, dates and olives in Azad Jammu and Kashmir, Baluchistan, Gilgit - Baltistan and Khyber Pakhtunkhwa.

An amount of Rs.30 million will be allocated for upgrading rice inspection laboratories, Rs. 20 million for subsidy at 100% of the prevailing mark-up rate for establishing mining and processing units in Khyber Pakhtunkhwa and Baluchistan.

Another Rs.20 million has been allocated for strengthening women's chamber of commerce and industry, Rs.32 million for setting up a resource management cell at the ministry of commerce, Rs.28 million for establishing leather export promotion council and Rs.70 million for services export development council.

Regulatory Measures

Unrestricted import of used motorized wheelchairs and five-year-old used or second-hand ambulances has been allowed. Two per cent of export proceeds will be allowed to manufacturers-cum-exporters for duty-free import of accessories for value-addition for leather garments and made-ups. Import of non-hazardous plastic scrap has been allowed for industrial consumers for use as raw material. A ban has been imposed on import of

plastic waste, hospital waste, used sewerage pipes and chemical containers.

Import of non-sterilized surgical needles and syringes will be restricted to industrial units, condition of Euro-II may be made applicable on import of all types of specialized vehicles, such as crane-mounted lorries, dump trucks and mixtures lorries. The import of used sprinkle lorries will be restricted to a maximum of five year old. All goods from banned list imported in commercial quality shall be allowed to re-export at importer/shipping lines cost. The imported substandard goods from the restricted list should be destroyed within a period of six months without offering any release.

Import of waste and scrape of tyres in completely shredded/ cut form will only be allowed to industrial consumers; domestic standards will equally apply to imported goods as well.

Construction engineering and electrical companies will be allowed to retain abroad the exported machinery to carry out work on export-cum-import basis with the condition that they will import the same on the conclusion of the contract against indemnity bond.

All exporters of edible products are to be registered and export of vegetable ghee and cooking oil will be allowed in packaging of up to 25kg to encourage value-addition.

Steps to contain Environmental & Health Hazards

- Ban on import of plastic waste/scrap-hospital waste, used sewerage pipes and chemical containers.
- Restricting import of non-sterilized surgical needles and syringes to industrial units.
- Only the more fuel efficient Euro-II category crane-mounted lorries, dump trucks, mixture lorries, etc, will be imported.
- Imported used tyres will only be allowed for industrial use.

Institutions to be Setup

- Export-Import Bank.
- Pakistan Land Port Authority.
- Leather Export Promotion Council.
- Service Trade Development Council.

CHAPTER - V

EXISTING PATTERN OF INDUSTRIAL DEVELOPMENT

5.1 DESCRIPTION OF EXISTING INDUSTRIES

There are about 52 large, medium and some small industrial units in the district. Industry-wise installed capacity of major industrial units is given in Table-10.

TABLE-10

Industry-wise Installed Capacity

Sr. #	Industry	No. of units	Annual Installed Capacity
1	Carpets	2	300 Looms
2	Cement	1	1165500 M. Tons
3	Cold Storage	2	12000 Bags
4	Flour Mills	30	59200 M.Tons/ Day
5	Food Products	1	150 Th. Kgs
6	Glass & Glass Products	3	113350 M. Tons
7	Iron & Steel Re-Rolling	1	10000 M. Tons
8	Light Engineering	1	50 Lac Rs.
9	Motors /Pumps	1	6500 Nos.
10	Packages	1	6240 M. Tons
11	Poultry Feed	1	504 M. Tons
12	Power Generation	1	29 MW
13	Textile Spinning	2	54614 Spindles
14	Vegetable Ghee & Cooking Oil	2	36000 M. Tons
15	Woollen Textile Spinning /Weaving	2	6148 Spindles, 32 Looms

Source: District Officer (E&IP), Attock.

Note: For further details visit: www.doi.pitb.gov.pk

CHAPTER - VI

FUTURE INDUSTRIAL POTENTIAL

Keeping in view the availability of raw material, skilled labour, linkage between the industrial units, local / national / international demand, future industrial potential of district Attock is discussed hereunder:

It would, however, be kept in mind that though the above mentioned factors facilitate the success of any industrial unit, yet the entire success depends upon the investors / entrepreneurs and the capabilities of the personnel having the managerial control because any of these factors, if lacking is manageable. Therefore, it is advisable that detailed feasibility of industrial projects must be carried out before making final decision for investment.

6.1 AGRICULTURE

The important crops of district Attock are wheat, groundnut and maize. Their average annual production during the period 2008-11 was 223.45, 6.64 and 15.09 thousand M.Tons respectively (Chapter-3, Section 3.1).

There are already 30 flour mills operating in the district having combined milling capacity of 59200 M. Tons / day.

Groundnut (Peanut) is generally consumed as dry fruit. But it also possess industrial potential. Good prospects exist for a peanut processing roasting/packing unit and a peanut oil/butter manufacturing unit.

6.2 LIVESTOCK

As per Punjab Development Statistics 2011, the population of cattle, buffaloes, sheep and goats was 767, 141, 192 and 721 thousand heads respectively. The annual availability of hides and skins is estimated at 162000 pieces. As regards poultry, there are 375 broiler and 40 layer poultry farms having rearing capacity of 3220 and 106 thousand birds respectively. In view of the proximity of Rawalpindi/Islamabad cities and Wah Ordinance Factory, very good potential exists for dairy farms, cattle/goat/sheep fattening farms, dairy products, poultry farms, tannery, leather garments, leather products, etc.

6.3 MINERAL

District Attock is quite rich in minerals. Besides oil and LPG, other minerals i.e. Bentonite, Limestone, Fireclay, Iron Ore and Argillaceous Clay are being excavated in quantities as given in

Chapter-3, Section 3.4, which reflects industrial potential i.e. Bentonite Processing Unit, Cement Factory, Refractories Manufacturing Units. In addition, Dolomite, Iron Ore, Coal and Marble though possess Industrial potential but their quantities being excavated are too small to meet the raw material requirements of industrial units. LPG Cylinder Manufacturing unit can be established for LPG filling/marketing for household consumption.

6.4 INDUSTRY

There are some important industries operating in the district such as textile spinning, woollen textile, deep-well turbine pumps and glass sheet manufacturing units, which reflect further potential for textile weaving, machine made woollen, synthetic carpets, hollow glass-ware, glass ampoules, centrifugal pumps, etc.

6.5 DEMAND BASED INDUSTRIES

In view of the localised requirements and existing industrial pattern, good prospects exist for Fibre Glass Water Tanks, Steel Fabrication (trunks/boxes and other house hold products, Biscuits/Confectionery, PVC Pipes, PVC Shoes, Aluminium Utensils, Earthen Sanitary-Ware, Laundry Soap, etc.

6.6 LIST OF IDENTIFIED PROJECTS

As per discussion given in section 6.1 to 6.5, the following projects have been identified for investment in the district:

- Agriculture Waste / by products raw material based industries for maximization of value addition chain.
- Aluminium Utensils
- Bentonite Processing
- Biscuit/Confectionery
- Centrifugal Pumps
- Cattle/Sheep/Goats Fattening Farms
- Dairy Farms
- Dairy Products
- Earthen Sanitary-Ware
- Energy conservation / efficiency
- Fibre Glass Water Tanks
- Glass Ampoules
- Hollow Glass-Ware
- Laundry Soap
- LPG Cylinders
- Leather Garments
- Leather Products
- Machine Made Woollen/Synthetic Carpets
- Poultry Farms
- Peanut Butter / Oil
- Peanut Processing/Roasting
- Power generation through coal and other alternate fuels

- Power generation through bagasse
- Refractories
- Steel Fabrication
- Tannery
- Textile Weaving
- Waste heat recovery systems

Directory of Industrial Establishments, Attock

Sr. No.	Name / Address of unit	Phone No. / Website	Industry	Estb. Year	Investment (Th.Rs.)	Emp	Product	Annual Installed Capacity
1	Art Weavers, 1.5 Km., Attock Sanjwal Road, Faqeerabad	2641104-5, www.art_weavers.com	Carpets	2002	10000	C	Carpets	100 Looms
2	Qandeel Export, Mirza Chowk, Attock Cantt.	2610386	Carpets	2002	10000	246	Carpets	200 Looms
3	Fauji Cement Company Limited, Fateh Jang	2538025, 2538046	Cement	1997	162813	240	Cement	1165500 M. Tons
4	Envicrete Limited, Qazi Abad, Near Abbas Paper Mill, Sanjwal Road	2001714, 051-227423, 2201784	Cement Products	2008	300000	25	Concrete Products	2.3 Million (Smu)
5	Abbas Cold Storage, G.T. Road, Hattain	2640001	Cold Storage	1983	500	6	Vegetable / Fruits	6000 Bags
6	Khan Cold Storage, G.T. Road Gondal	2660245	Cold Storage	2003	2000	4	Vegetable / Fruits	6000 Bags
7	Al-Junaid Flour Mill Sanjwal Chwok G.T Road Faqeerabad	2641116	Flour Mills	2009	26000	18	Flour	280 M.Tons/Day
8	Al-Khalid Flour Mills, G.T. Road, Faqirabad	2641117-8, 2641056	Flour Mills	1996	31800	19	Flour	240 M.Tons/Day
9	Al-Quresh Flour Mills, Gt Road, Hattian	2640890-91	Flour Mills	2008	23000	14	Flour	180 M.Tons/Day
10	Amant Flour & General Mills, Kamara Road	2602825, 2612051	Flour Mills	1999	25000	10	Flour	240 M.Tons/Day
11	Attock Flour Mills, G.T Road, Hattian	2641090	Flour Mills	1997	8900	10	Flour	240 M.Tons/Day

Sr. No.	Name / Address of unit	Phone No. / Website	Industry	Estb. Year	Investment (Th.Rs.)	Emp	Product	Annual Installed Capacity
12	Bhatar Flour Mills, G.T. Road, Faqirabad	2641050	Flour Mills	1994	15000	20	Flour	240 M.Tons/Day
13	Bilal Flour Mills, GT Rd, Fatehullah, Near Burhan	2658297	Flour Mills	2006	8000	7	Flour	80 M.Tons/Day
14	Cambellpur Flour Mills, Fatehjang Road	2603752, 2612552 0314- 9508685	Flour Mills	1970	1576	36	Flour	320 M.Tons/Day
15	Chach Flour & General Mills Moza Said Khel Tarbaila Road Hazro	0300- 5499229	Flour Mills	2009	12000	7	Flour	200 M.Tons/Day
16	Darya Flour Mills, G.T. Road, Faqirabad	2641111-2	Flour Mills	1996	21000	24	Flour	220 M.Tons/Day
17	Famous Flour Mills, Kohat Road, Pind-Sultani, Jand	2630361	Flour Mills	1988	2500	13	Flour	140 M.Tons/Day
18	Habib Flour Mill, Sanjwal Road Near Pso Depot Faqeerabad	0300- 5001508	Flour Mills	2009	22000	16	Flour	240 M.Tons/Day
19	Hafiz Flour & General Mills, Faqeerabad	2641065	Flour Mills	1994	10800	22	Flour	240 M.Tons/Day
20	Kamra Flour Mills, Kamra Road	2610286	Flour Mills	2005	3500	5	Flour	120 M.Tons/Day
21	Khawaja Flour & General Mills, Kacha More, G.T. Road Hassanabdal	2522188, 2520799	Flour Mills	2000	10000	13	Flour	240 M.Tons/Day
22	Madina Flour Mills, 3-Meela Chowk Attock	0321- 5222479	Flour Mills	2009	15000	12	Flour	240 M.Tons/Day

Sr. No.	Name / Address of unit	Phone No. / Website	Industry	Estb. Year	Investment (Th.Rs.)	Emp	Product	Annual Installed Capacity
23	Madni Flour Mills, Utman Abad Hazara Road Hassanabdal	0346-5616082	Flour Mills	2009	17500	14	Flour	240 M.Tons/Day
24	New Punjab Flour & General Mills, GT Road, Burhan	2658004	Flour Mills	2006	60000	17	Flour	240 M.Tons/Day
25	New Sethi Flour Mills, Islam Shaheed Road, Hassanabdal	2520680	Flour Mills	1986	3275	21	Flour	160 M.Tons/Day
26	Pak Millat Flour & General Mills, Khudah, Burhan	2658313, 2658413	Flour Mills	2008	30000	18	Flour	240 M.Tons/Day
27	Rajput Flour Mills, Hazara Road, Hassanabdal	2520872	Flour Mills	1997	1000	12	Flour	280 M.Tons/Day
28	Rehmat Flour Mills, Kamra Road	2602825, 2612151	Flour Mills	2006	15000	9	Flour	240 M.Tons/Day
29	Sethi Roller Flour Mills, Islam Shaheed Road, Hassanabdal	2520788	Flour Mills	1975	3742	19	Flour	200 M.Tons/Day
30	Shama Flour And General Mills, GT. Road, Burhan	2658331-4	Flour Mills	1985	5048	10	Flour	160 M.Tons/Day
31	Siraj Flour Mills, Fateh Jang	2212301	Flour Mills	1993	3500	15	Flour	100 M.Tons/Day
32	Siran Flour Mills, Munnoo Nagar, Hassanabdal	2520263	Flour Mills	2002	2500	19	Flour	160 M.Tons/Day

Sr. No.	Name / Address of unit	Phone No. / Website	Industry	Estb. Year	Investment (Th.Rs.)	Emp	Product	Annual Installed Capacity
33	Sohail Flour Mills, G.T.Road, Hatian	2640151-2	Flour Mills	1990	5125	19	Flour	200 M.Tons/Day
34	Tariq Flour Mills, Kamra Road	2610286	Flour Mills	1994	13688	5	Flour	120 M.Tons/Day
35	Umair Flour Mills, G.T. Road, Gondal	2660590, 2660190	Flour Mills	1999	6000	12	Flour	200 M.Tons/Day
36	Usman Flour Mills, Kamra Road	2612479	Flour Mills	1990	1300	10	Flour	240 M.Tons/Day
37	Kitchen Food International (Pvt) Ltd., Near Shell Pump, Main Pindi Fateh Jang Road, Village Mangial, Fateh Jang	051-5852416, 0300-5009115	Food Products	2005	10000	6	Spices Packing	150 Th. Kgs
38	Ali Glass, G.T. Road Hassanabdal	2520224-5	Glass & Glass Products	1995	108000	169	Glass Sheet	21000 M. Tons
39	Gunj Glass Works Ltd. G.T Road Hassanabdal	250226-7	Glass & Glass Products	1984	200000	166	Glass Plate/Sheet	25000 M. Tons
40	Khawaja Flat Glass Industries (Pvt) Ltd. 4-Km Rawalpindi-Fateh Jang Road	051-2217802, 5564998	Glass & Glass Products	1993	2389575	345	Glass Plate/Sheet	67350 M. Tons
41	Karim Aziz Industries (Pvt) Ltd. Opp Railway Station, Hassanabdal	2520764	Iron & Steel Re-Rolling Mills	1968	31166	35	M.S. Bilot/ Ingot	10000 M. Tons

Sr. No.	Name / Address of unit	Phone No. / Website	Industry	Estb. Year	Investment (Th.Rs.)	Emp	Product	Annual Installed Capacity
42	Asia Con (Pvt) Ltd., G.T. Road Burhan	2658321-2, 0992-380101	Light Engineering	1999	5000	25	Services Workshop	50 Lac Rs.
43	KSB Pumps Company Limited, Hazara Road, Hassanabdal	2520236, 042-6304173	Motors / Pumps	1959	180525	362	Pumps	6500 Nos.
44	Abbas Paper And Board Mill (Pvt) Ltd. Sanjwal Road, Faqirabad	2013772, 0300-8543375	Packages	1992	8442	20	Packing Material	6240 M. Tons
45	Green Top Export (Pvt) Ltd. 11 Km Fateh Jang Road, Bahtar	0300-5009642	Poultry Feed	1995	4200	7	Poultry Feed	504 M. Tons
46	Aeltran Energy Ltd. S(Ael) Bhal Syedian, Kohat Road, Fateh Jang	0323-4567057, 042-5990034	Power Generation	2001	15000	20	Power Generation	29 Mw Per Hour
47	Margalla Textile Mills Ltd., G.T. Road, Hassanabdal	2520666	Textile Spinning	1973	163322	959	Mm Yarn	26702 Spindles
48	Texila Cotton Mills, Munnoo Nagar, Hassanabdal	2520825	Textile Spinning	1974	25300	694	Pc Yarn	27912 Spindles
49	Aayan Industries (Pvt) Ltd., Rawalpindi Road, Fateh Jang	2212490-91, 0301-7823358	Vegetable Ghee And Cooking Oil	1999	40000	C	Vegetable Ghee / Cooking Oil	18000 M.Tons
50	Al-Wakeel Oil & Ghee Industries (Pvt) Ltd., G.T. Road, Hassanabdal	2522069	Vegetable Ghee And Cooking Oil	2002	3200	C	Vegetable Ghee / Cooking Oil	18000 M.Tons

Sr. No.	Name / Address of unit	Phone No. / Website	Industry	Estb. Year	Investment (Th.Rs.)	Emp	Product	Annual Installed Capacity
51	Burhan Woollen Mills (Pvt) Ltd. Opp: G.T. Road Burhan	2658347, 2010880	Woollen Textile Spinning /Weaving	1974	12886	20	Carpet Yarn	492 Spindles
52	Lawrencepur Woollen & Textile Mills Ltd., P.O. Dawoodpur, Faqirabad	2641074-6	Woollen Textile Spinning /Weaving	1954	126591	527	Woollen Yarn, Cloth	5656 Spindles, 32 Looms

Source: Directorate of Industries, Punjab

LIST OF CONTACT NUMBERS

Directorate of Industries Punjab

Designation	Contact
Director Industries, Punjab	Tel: +92 (42)-99211520-1 Fax: +92 (42)-99211522 dipunjab@gmail.com
Additional Director Industries	Tel: +92 (42)-99211531 +92 (42)-99212752 Fax: +92 (42)-99212753
Joint Director (Development)	Tel: +92 (42)-99211526
Senior Economist	Tel: +92 (42)-99211533
Staff Economist	Tel: +92 (42)-99211534
Deputy Director (Admin)	Tel: +92 (42)-99211528
Deputy Director (Development)	Tel: +92 (42)-99211528
Deputy Director (Planning)	Tel: +92 (42)-99211530
Assistant Director (Admin)	Tel: +92 (42)-99211529
Assistant Director (Planning)	Tel: +92 (42)-99211530
Assistant Director (Statistics)	Tel: +92 (42)-99211524
Assistant Registrar	Tel: +92 (42)-99211523
Librarian	Tel: +92 (42)-99213010
District Officer (E&IP), Attock	Tel: +92 (57)-9316003

Other Relevant Departments

Department	Contact
Secretary, Industries, Commerce & Investment Department, Govt. of the Punjab	Tel: +92 (42) 99210534-5 Fax: +92 (42) 99210536
Chamber of Commerce & Industry Attock	Tel: +92 (57) 2610031 Fax: +92 (57) 2703337 acci.president@ymail.com
Punjab Board of Investment & Trade (PBIT)	Tel: +92 (42) 99205201 info@pbit.gop.pk
Small & Medium Enterprises Development Authority (SMEDA)	Tel: +92(42)-111-111-456 Fax: +92 (42) 36304926-7 info@smeda.org.pk

Punjab Industrial Estates Development and Management Company (PIEDMC)	Tel: +92 (42) 35297203-6 Fax: +92 (42) 35297207 info@pie.com.pk
Punjab Small Industries Corporation (PSIC)	Tel: +92 (42) 99200453

BIBLIOGRAPHY

- Punjab Development Statistics 2011, Bureau of Statistics, Government of the Punjab
- The Urban Unit, Planning & Development Department, Government of the Punjab.
- Technical Education and Vocational Training Authority
- Chief Inspector of Boilers, Directorate of Industries, Punjab
- Directorate of Agriculture, Crop Reporting Service, Punjab
- Chief Conservator of Forest Planning, Monitoring and Evaluation, Punjab
- Directorate General (Ext), Livestock & Dairy Development Punjab
- Directorate General Mines & Minerals, Punjab
- Punjab Small Industries Corporation
- Punjab Industrial Estates Development and Management Company
- Faisalabad Industrial Estates Development and Management Company
- Industries, Commerce & Investment Department, Government of the Punjab
- District Officers (Enterprise & Investment Promotion) as well as District Administration
- Export Processing Zones Authority
- Board of Investment, Government of Pakistan
- Website of Stat Bank of Pakistan
- Ministry of Commerce, Govt. of Pakistan
- Directory of Industrial Establishments Punjab, Directorate of Industries, Punjab

